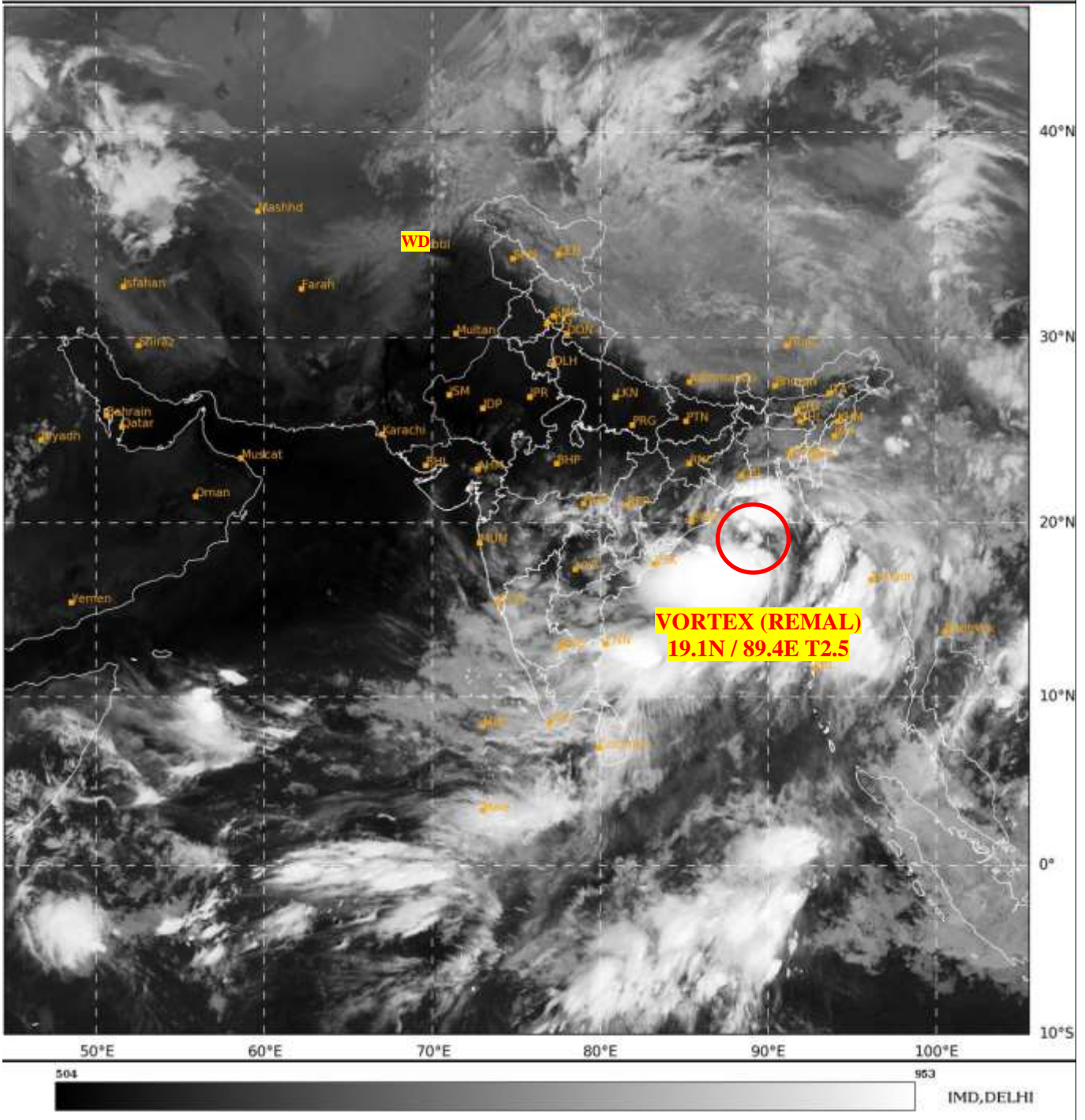




**SATELLITE BULLETIN BASED ON SATELLITE
IMAGERIES AND PRODUCTS**
25.05.2024 TIME 2100 UTC

SAT : INSAT-3D IMG
IMG_TIR1 10.8 um
LIC Mercator

25-05-2024/(2100 to 2126) GMT
26-05-2024/(0230 to 0256) IST



TCIN50 DEMS 252100

SATELLITE BULLETIN BASED ON INSAT-3D PIC OF 252100 UTC (.)

REGION COVERED BETWEEN LAT 50.0°N TO 35.0°S AND LONG 30.0°E TO 125.0°E (.)

SALIENT FEATURES:-

VORTEX (REMAL) OVER NW ADJ NE & CENTRAL BAY:-

VORTEX (**REMAL**) OVER NW ADJ NE & CENTRAL BAY HAS MOVED NORTHWARDS AND NOW LAY CENTERED NEAR **19.1N / 89.4E** (.) INTENSITY **T2.5** (.) ASSTD BKN LOW/MED CLOUDS WITH EMBDD INT TO V INT CONVTN OVER NORTH ADJ CENTRAL BAY & NORTH ANDAMAN SEA (MINIMUM CTT **MINUS 93 DEG CEL**) (.)

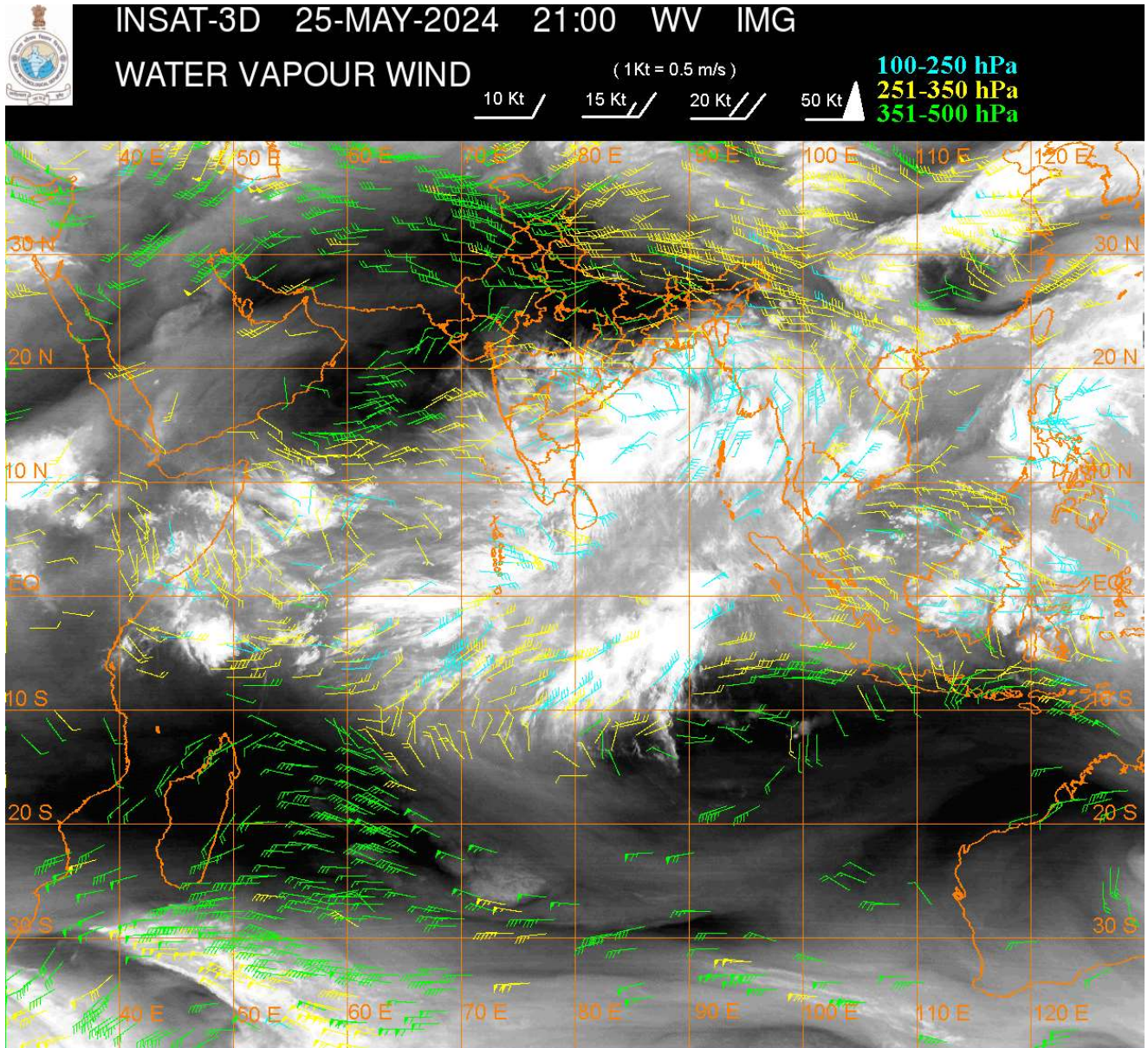
WESTERN DISTURBANCE:-

SCT MULTILAYERED CLOUDS OVER E AFGAN N PAK & N/HOOD IN ASSW **WD** OVER THE AREA (.)

CONVECTIVE / THUNDERSTORM ACTIVITY:-

**INTENSE TO VERY INTENSE CONVECTIVE / THUNDERSTORM ACTIVITY OBSERVED COTL
GWB COTL BD ANDAMAN ILS AREA (MINIMUM CTT MINUS 93 DEG CEL) N COTL AP NE TN
(MINIMUM CTT MINUS 85-90 DEG CEL) (.)**

**MODERATE TO INTENSE CONVECTIVE / THUNDERSTORM ACTIVITY OBSERVED S CHTGH
ORS E ASSAM MANI MIZO TRP MAHA GOA KRNTK TLNGN RYLSM S COTL AP KER REST TN
LKSDP ILS AREA (MINIMUM CTT MINUS 55-70 DEG CEL) (.)**



CLOUDS DESCRIPTION WITHIN INDIA:-

NORTH:-

**SCT LOW/MED CLOUDS WITH EMBDD ISOL WK TO MOD CONVTN OVER LADAKH N HP N
UTRKND (.) ISOL TO SCT LOW/MED CLOUDS OVER J&K S HP S UTRKND E UP (.)**

EAST:-

**SCT LOW/MED CLOUDS WITH EMBDD INT TO V INT CONVTN OVER COTL GWB & COTL BD (.)
SCT LOW/MED CLOUDS WITH EMBDD MOD TO INT CONVTN OVER S CHTGH ORS E ASSAM
MANI MIZO TRP AND WK TO MOD CONVTN OVER SE JHRKND N CHTGH REST GWB SKM
REST NE STATES REST BD (.) SCT LOW/MED CLOUDS OVER BHR REST JHRKND SHWB (.)**

WEST:-

**SCT LOW/MED CLOUDS WITH EMBDD MOD TO INT CONVTN OVER MAHA GOA AND ISOL WK
TO MOD CONVTN OVER SE RAJ MP E GUJ (.) SCT LOW/MED CLOUDS OVER SW RAJ W GUJ (.)**

SOUTH:-

**SCT TO BKN LOW/MED CLOUDS WITH EMBDD INT TO V INT CONVTN OVER N COTL AP NE
TN ANDAMAN ILS AREA (.) SCT TO BKN LOW/MED CLOUDS WITH EMBDD MOD TO INT
CONVTN OVER KRNTK TLNGN RYLSM S COTL AP KER REST TN LKSDP ILS AREA (.) SCT
LOW/MED CLOUDS WITH EMBDD WK TO MOD CONVTN OVER NICOBAR ILS AREA (.)**

ARABIAN SEA:-

SCT LOW/MED CLOUDS WITH EMBDD INT TO V INT CONVTN OVER SW ARSEA (MINIMUM **CTT MINUS 93 DEG CEL**) (.) SCT LOW/MED CLOUDS WITH EMBDD MOD TO INT CONVTN OVER SE ARSEA LKSDP ILS AREA MALDIVES AREA COMORIN AREA AND WK TO MOD CONVTN OVER EC ARSEA OFF MAHA-GOA-KRNTK COATS (.)

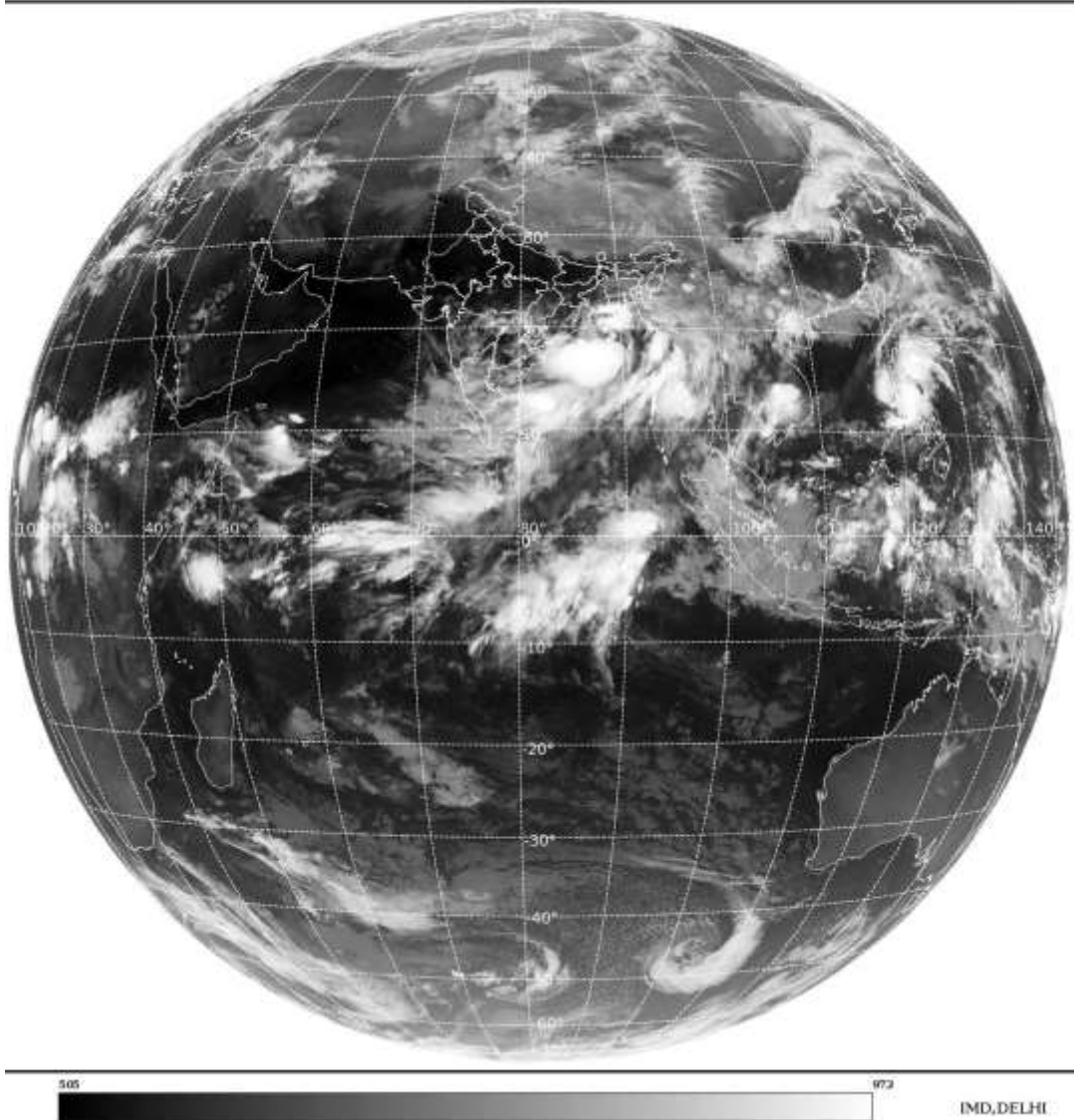
BAY OF BENGAL & ANDAMAN SEA:-

SCT TO BKN LOW/MED CLOUDS WITH EMBDD INT TO V INT CONVTN OVER BAY NORTH ANDAMAN SEA GULF OF MARTABAN & ARAKAN COAST (MINIMUM **CTT MINUS 93 DEG CEL**) (.) SCT LOW/MED CLOUDS WITH EMBDD MOD TO INT CONVTN OVER SOUTH ANDAMAN SEA & TENASSERIM COAST SEA (.)

CLOUDS DESCRIPTION OUTSIDE INDIA:-

SAT : INSAT-3D IMG
Thermal Infrared1 Count 10.8 um
L1B FULL DISK

25-05-2024/(2100 to 2126) GMT
26-05-2024/(0230 to 0256) IST



SCT LOW/MED CLOUDS WITH EMBDD MOD TO INT CONVTN OVER SRI LANKA PALK STR GULF OF MANNAR MALDIVES NEPAL BHUTAN TIBET CHINA YELLOW SEA EAST CHINA SEA TAIWAN MYANMAR THAILAND GULF OF THAILAND CAMBODIA LAOS VIETNAM GULF OF TONKIN SUMATRA STR OF MALACCA MALAYSIA BORNEO SOUTH CHINA SEA JAVA ILS & SEA CELEBES ILS & SEA PHILIPPINES SULU SEA AND OVER INDIAN OCEAN BET LAT 5.0N TO 10.0S LONG 40.0E TO 105.0E (.)

TOO 26/0445 HRS IST=

NNNN

LEGEND:-

REGION	NORTH	J&K HP PJB HARY DLH UP UTRKND	
	EAST	BHR JHRKND CHTGH ORS WB SKM NORTH- EAST STATES	
	WEST	RAJ MP GUJ MAHA GOA	
	SOUTH	TLNGN AP KRNTK KER TN LKSDP ANDAMAN & NICOBAR ILS	
CLOUD DISTRIBUTION	ISOL	ISOLATED (LESS THAN 25%)	
	SCT	SCATTERED (25 TO 50%)	
	BKN	BROKEN (51 TO 75%)	
	SLD	SOLID (GREATER THAN 75%)	
CLOUDS TOP TEMPERATURE	CTT	CLOUD TOP TEMPERATURE	
CONVECTION	WK CONV TN	WEAK CONVECTION (CTT GREATER THAN -25°C)	
	MOD CONV TN	MODERATE CONVECTION (CTT BETWEEN -25°C TO -40°C)	
	INT CONV TN	INTENSE CONVECTION (CTT BETWEEN -41°C TO -70°C)	
	V INT CONV TN	VERY INTENSE CONVECTION (CTT LESS THAN -70°C)	
METEOROLOGICAL SUB- DIVISIONS, STATES & UNION TERITORIES	ARUPR	ARUNACHAL PRADESH	
	BHR	BIHAR	
	CHTGH	CHHATTISGARH	
	COTL AP	COASTAL ANDHRA PRADESH	
	COTL KRNTK	COASTAL KARNATAKA	
	COTL ORS	COASTAL ORISSA	
	GUJ	GUJARAT	
	GWB	GANGETIC WEST BENGAL	
	HARY	HARYANA	
	DLH	DELHI	
	HP	HIMACHAL PRADESH	
	J&K	JAMMU AND KASHMIR	
	JHRKND	JHARKHAND	
	KER	KERALA	
	KKN	KONKAN	
	LKSDP	LAKSHADWEEP	
	M MAHA	MADHYA MAHARASHTRA	
	MAHA	MAHARASHTRA	
	MANI	MANIPUR	
	MEGHA	MEGHALAYA	
	MIZO	MIZORAM	
	MP	MADHYA PRADESH	
		MRTHWD	MARATHWADA
		NAGA	NAGALAND
N COTL AP		NORTH COASTAL ANDHRA PRADESH	
NIK		NORTH INTERIOR KARNATAKA	

	ORS	ORISSA
	PJB	PUNJAB
	RAJ	RAJASTHAN
	RYLSM	RAYALASEEMA
	SAU & KUTCH	SAURASHTRA & KUTCH
	SHWB	SUB-HIMALAYAN WEST BENGAL
	SIK	SOUTH INTERIOR KARNATAKA
	SKM	SIKKIM
	TLNGN	TELANGANA
	TN	TAMIL NADU
	TRP	TRIPURA
	UP	UTTAR PRADESH
	UTRKND	UTTARAKHAND
	VID	VIDHARBHA
	SHWB	SUB HIMALAYAN WEST BENGAL
	GWB	GANGETIC WEST BENGAL
	ARSEA	ARABIAN SEA
	ILS	ISLANDS
MISCELLANEOUS	ASSW	IN ASSOCIATION WITH
	ASSTD	ASSOCIATED
	LLC	LOW LEVEL CIRCULATION
	EMBDD	EMBEDDED
	N/HOOD	NEIGHBOURHOOD
	EXT	EXTREME