



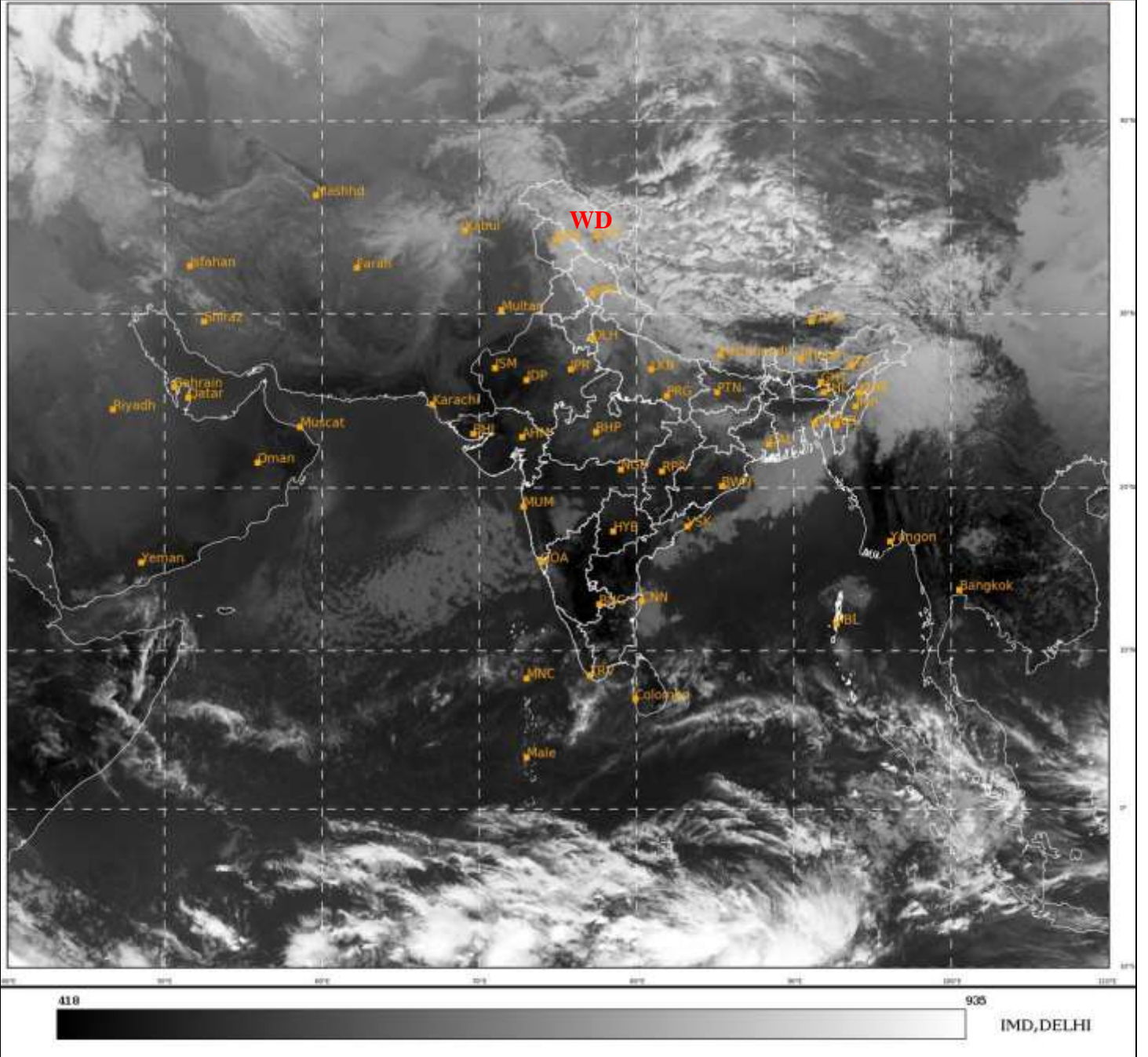
भारत मौसम विज्ञान विभाग
पृथ्वी विज्ञान मंत्रालय
India Meteorological Department
Ministry of Earth Sciences



SATELLITE BULLETIN BASED ON SATELLITE
IMAGERIES AND PRODUCTS
24.01.2022 TIME 0600 UTC

SAT : INSAT-3D IMG
IMG_TIR1 10.8 um
LIC Mercator

24-01-2022/(0600 to 0627) GMT
24-01-2022/(1130 to 1157) IST



TCIN50 DEMS 240600

SATELLITE BULLETIN BASED ON INSAT-3D PIC OF 240600 UTC (.)

REGION COVERED BETWEEN LAT 50.0°N TO 30.0°S AND LONG 40.0°E TO 125.0°E (.)

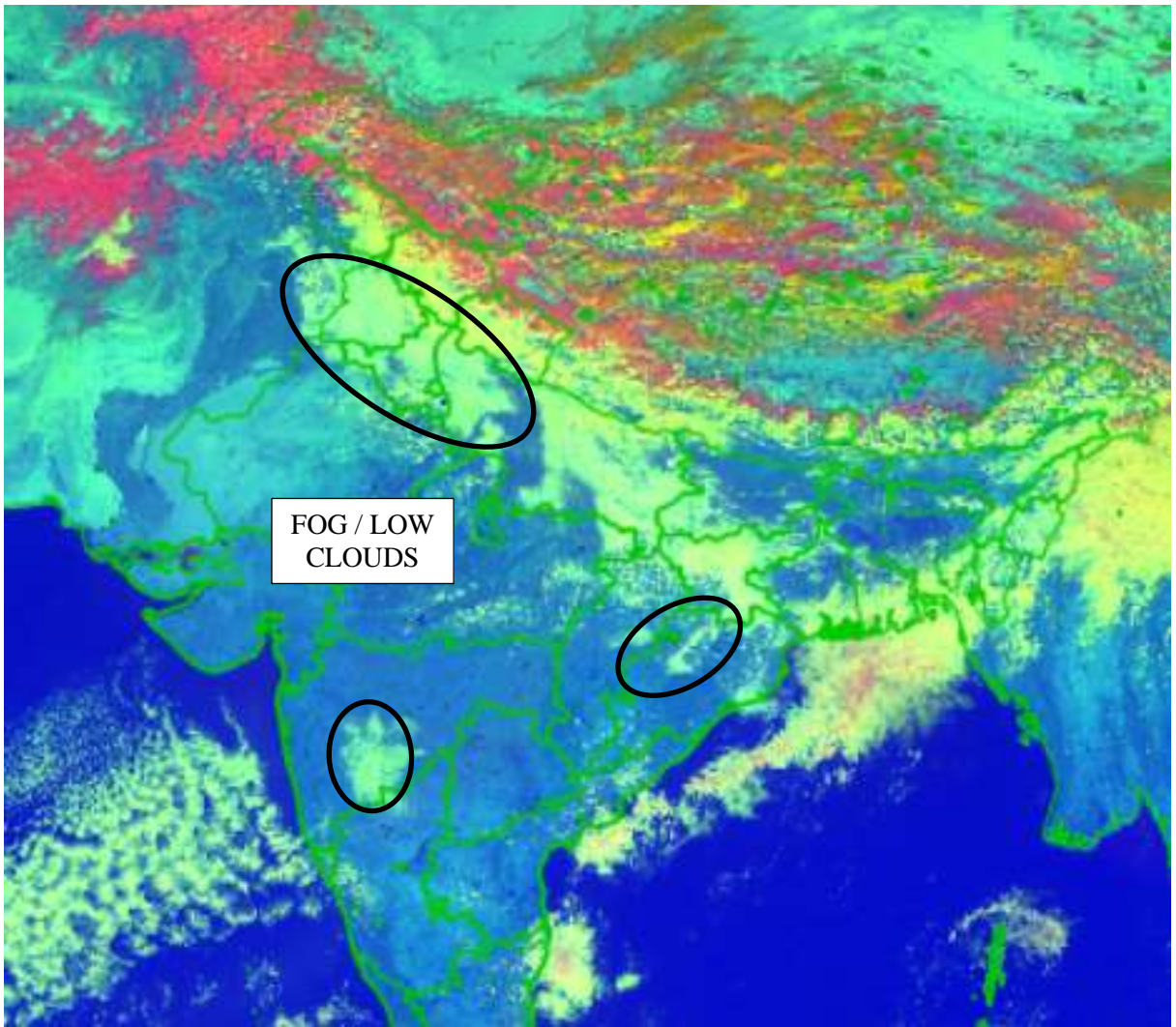
SALIENT FEATURES:-

WESTERN DISTURBANCE (WD):-

SCT TO BKN MULTILAYERED CLOUDS OVER N PAK LADAKH J&K HP UTRKND TIBET ADJ CHINA IN ASSW **WD** OVER THE AREA (.)

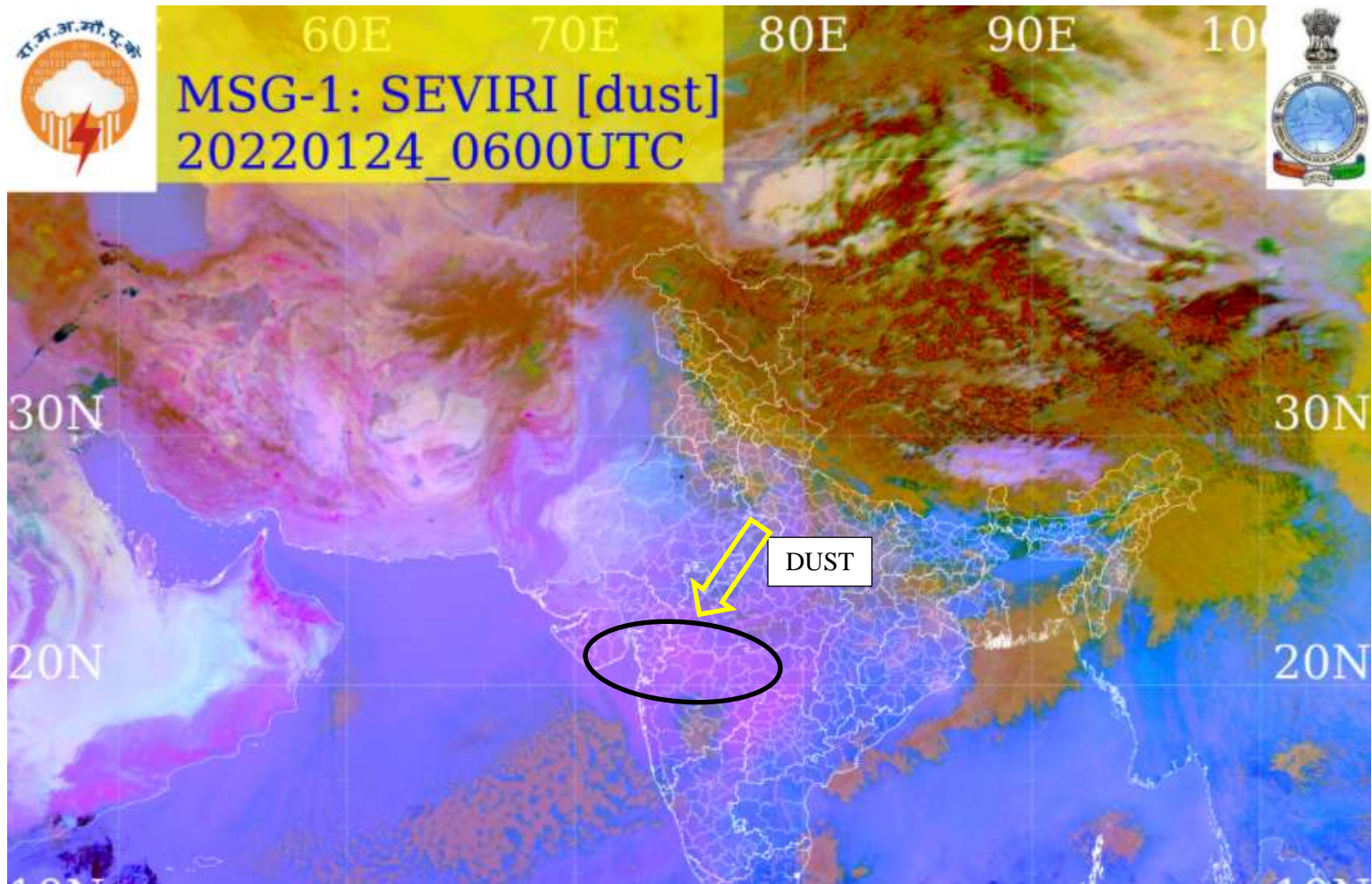
FOG/LOW CLOUDS:-

DAY MICROPHYSICS FOG PRODUCT OF INSAT -3D AT 0600 UTC INDICATES SCT TO BKN FOG / LOW CLOUDS OVER NE PAK PJB HARY DLH W UP EXT E MP NE CHTGH SW BHR EXT N ORS S MADHYA MAHA (.)



DUST:-

METEOSAT-8 RGB DUST PRODUCT AT 0600 UTC INDICATES DUST OVER S GUJ EXT SW MP NORTH MADHYA MAHA E MRTHWD VID AND N TLNGN (.)





INSAT-3D 24-JAN-2022 06:00 WV IMG

WATER VAPOUR WIND

(1Kt = 0.5 m/s)

10 Kt

15 Kt

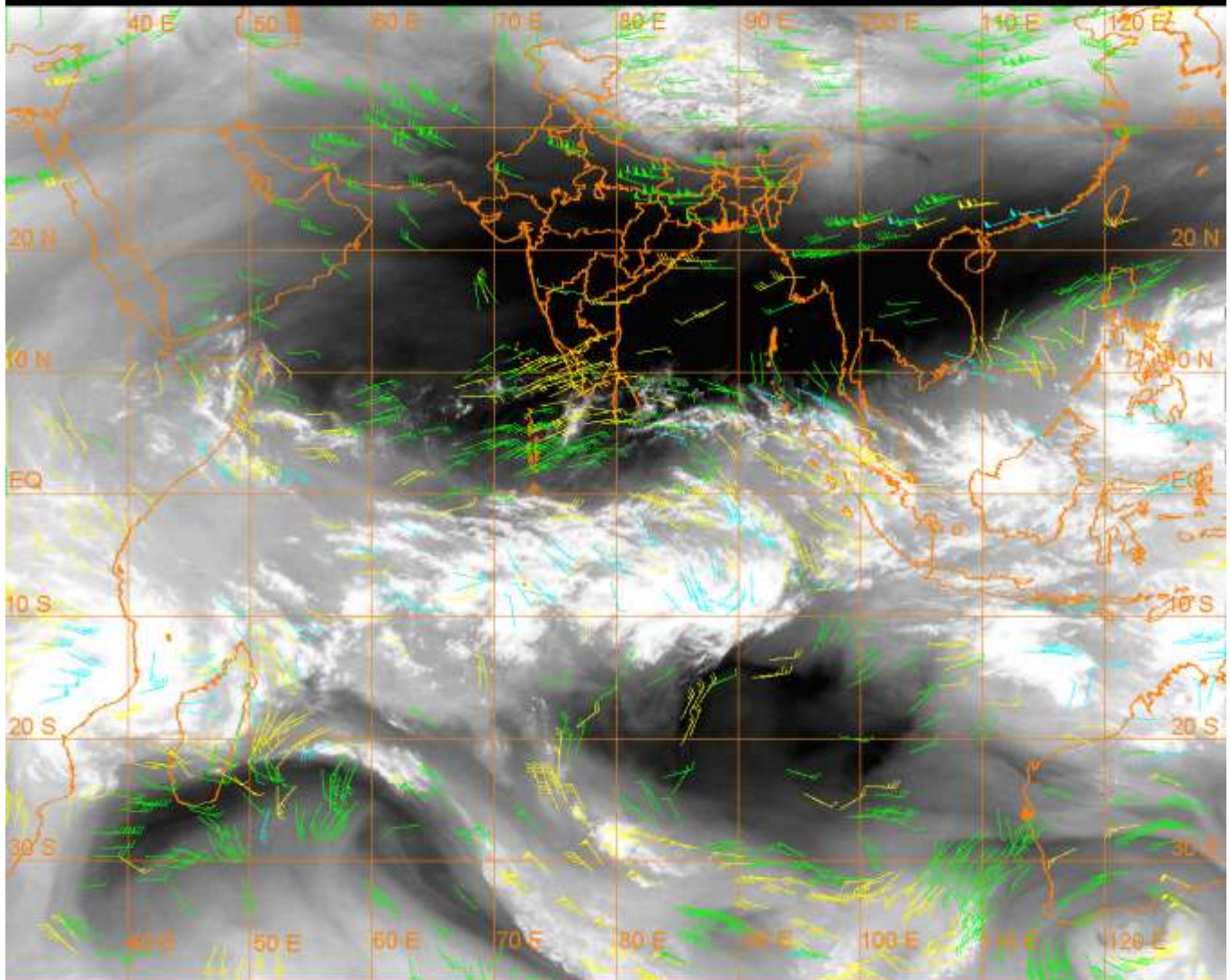
20 Kt

50 Kt

100-250 hPa

251-350 hPa

351-500 hPa



CLOUDS DESCRIPTION WITHIN INDIA:-

NORTH:-

SCT TO BKN LOW/MED CLOUDS WITH EMBDD WK TO MOD CONVTN OVER LADAKH J&K HP UTRKND EXT N PJB EXT N HARY N UP (.) SCT LOW/MED CLOUDS OVER SE UP (.)

EAST:-

SCT TO BKN LOW/MED CLOUDS WITH EMBDD WK CONVTN OVER EXT PARTS OF BHR N JHRKND S GWB N SHWB SKM NE STATES & BD (.) ISOL TO SCT LOW/MED CLOUDS OVER CHTGH ORS S JHRKND N GWB S SHWB (.)

WEST:-

SCT LOW/MED CLOUDS OVER N RAJ MP & GOA (.)

SOUTH:-

SCT LOW/MED CLOUDS WITH EMBDD WK CONVTN OVER NICOBAR ILS (.) SCT LOW/MED CLOUDS OVER N COTL KRNTK S RYL SM N COTL AP S KER TN LKSDP & ANDAMAN ILS (.)

ARABIAN SEA:-

SCT LOW/MED CLOUDS WITH EMBDD ISOL WK TO MOD CONVTN OVER SOUTH ARSEA AND COMORIN (.) SCT LOW/MED CLOUDS OVER REST ARSEA (.)

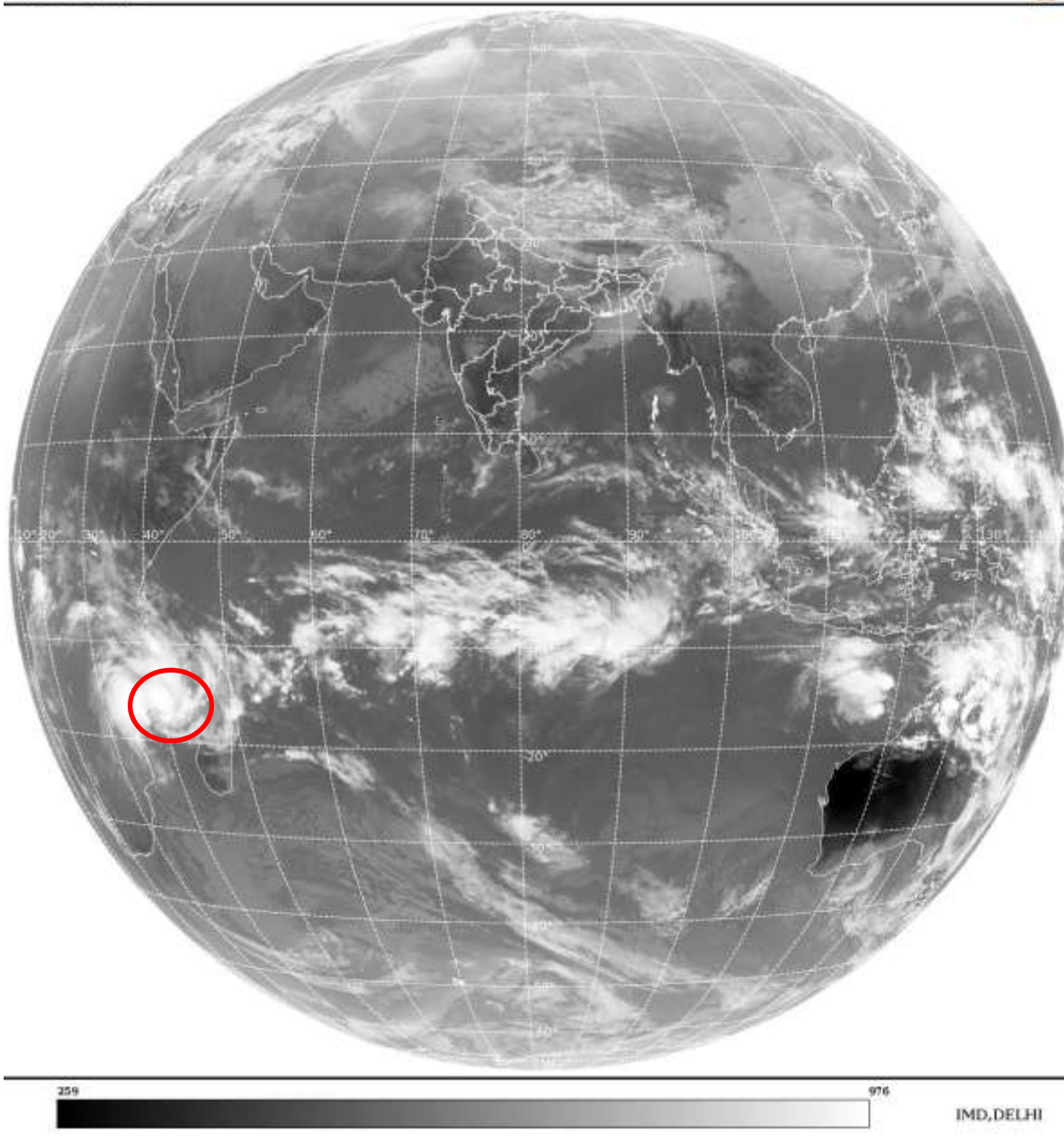
BAY OF BENGAL & ANDAMAN SEA:-

SCT LOW/MED CLOUDS WITH EMBDD ISOL WK TO MOD CONVTN OVER SOUTH BAY SOUTH OF LAT 9.0N AND S ANDAMAN SEA AND WK CONVTN OVER W BAY N ANDAMAN SEA (.)

CLOUDS DESCRIPTION OUTSIDE INDIA:-

SAT : INSAT-3D IMG
Thermal Infrared1 Count 10.8 um
LIB FULL DISK

24-01-2022/(0600 to 0627) GMT
24-01-2022/(1130 to 1157) IST



VORTEX OVER MOZAMBIQUE CHANNEL:-

VORTEX OVER MOZAMBIQUE CHANNEL CENTERED NEAR 16.0S / 41.6E (.) INTENSITY T2.5/2.5 (.) ASSTD BKN LOW/MED CLOUDS WITH EMBDD INT TO V INT CONVTN OVER MOZAMBIQUE CHANNEL MALAWI TANZANIA MOZAMBIQUE AND N/HOOD (.)

SCT LOW/MED CLOUDS WITH EMBDD MOD TO INT CONVTN OVER NEPAL BHUTAN TIBET CHINA YELLOW SEA E CHINA SEA TAIWAN N MYANMAR SUMATRA STR OF MALACCA MALASIYA BORNEO ADJ SOUTH CHINA SEA JAVA ILS & SEA CELEBES ILS & SEA PHILIPPINES SULU SEA N MADAGASCAR MOZAMBIQUE CHANNEL AND OVER INDIAN OCEAN BET LAT 5.0N TO 17.0S LONG 40.0E TO 102.0E (.)

TOO 24/1235 HRS IST=

NNNN

LEGEND:-

REGION	NORTH	J&K HP PJB HARY DLH UP UTRKND
	EAST	BHR JHRKND CHTGH ORS WB SKM NORTH- EAST STATES
	WEST	RAJ MP GUJ MAHA GOA
	SOUTH	TLNGN AP KRNTK KER TN LKSDP ANDAMAN & NICOBAR ILS

CLOUD DISTRIBUTION	ISOL	ISOLATED (LESS THAN 25%)
	SCT	SCATTERED (25 TO 50%)
	BKN	BROKEN (51 TO 75%)
	SLD	SOLID (GREATER THAN 75%)
CLOUDS TOP TEMPERATURE	CTT	CLOUD TOP TEMPERATURE
CONVECTION	WK CONVTN	WEAK CONVECTION (CTT GREATER THAN -25°C)
	MOD CONVTN	MODERATE CONVECTION (CTT BETWEEN -25°C TO -40°C)
	INT CONVTN	INTENSE CONVECTION (CTT BETWEEN -41°C TO -70°C)
	V INT CONVTN	VERY INTENSE CONVECTION (CTT LESS THAN -70°C)
METEOROLOGICAL SUB-DIVISIONS, STATES & UNION TERRITORIES	ARUPR	ARUNACHAL PRADESH
	BHR	BIHAR
	CHTGH	CHHATTISGARH
	COTL AP	COASTAL ANDHRA PRADESH
	COTL KRNTK	COASTAL KARNATAKA
	COTL ORS	COASTAL ORISSA
	GUJ	GUJARAT
	GWB	GANGETIC WEST BENGAL
	HARY	HARYANA
	DLH	DELHI
	HP	HIMACHAL PRADESH
	J&K	JAMMU AND KASHMIR
	JHRKND	JHARKHAND
	KER	KERALA
	KKN	KONKAN
	LKSDP	LAKSHADWEEP
	M MAHA	MADHYA MAHARASHTRA
	MAHA	MAHARASHTRA
	MANI	MANIPUR
	MEGHA	MEGHALAYA
	MIZO	MIZORAM
	MP	MADHYA PRADESH
		MRTHWD
	NAGA	NAGALAND

	N COTL AP	NORTH COASTAL ANDHRA PRADESH
	NIK	NORTH INTERIOR KARNATAKA
	ORS	ORISSA
	PJB	PUNJAB
	RAJ	RAJASTHAN
	RYLSM	RAYALASEEMA
	SAU & KUTCH	SAURASHTRA & KUTCH
	SHWB	SUB-HIMALAYAN WEST BENGAL
	SIK	SOUTH INTERIOR KARNATAKA
	SKM	SIKKIM
	TLNGN	TELANGANA
	TN	TAMIL NADU
	TRP	TRIPURA
	UP	UTTAR PRADESH
	UTRKND	UTTARAKHAND
	VID	VIDHARBHA
	SHWB	SUB HIMALAYAN WEST BENGAL
	GWB	GANGETIC WEST BENGAL
	ARSEA	ARABIAN SEA
	ILS	ISLANDS
MISCELLANEOUS	ASSW	IN ASSOCIATION WITH
	ASSTD	ASSOCIATED
	LLC	LOW LEVEL CIRCULATION
	EMBDD	EMBEDDED
	N/HOOD	NEIGHBOURHOOD
	EXT	EXTREME