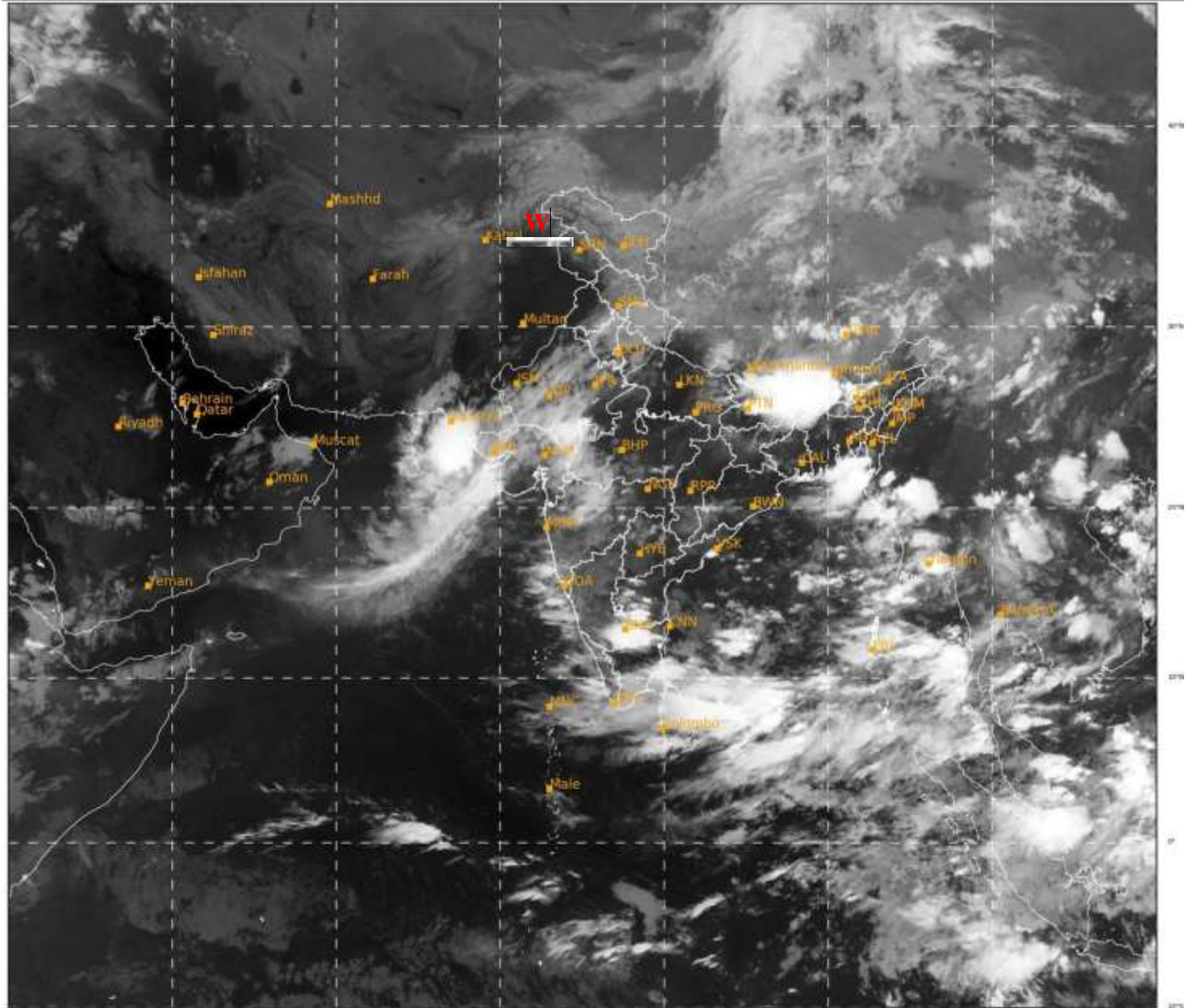




SATELLITE BULLETIN BASED ON SATELLITE
IMAGERIES AND PRODUCTS
01.09.2021 TIME 2100 UTC

SAT : INSAT-3D IMG
IMG_TIR1 10.8 um
LIC Mercator

01-09-2021/(2130 to 2156) GMT
02-09-2021/(0300 to 0326) IST



499

957

IMD, DELHI

TCIN50 DEMS 012100

SATELLITE BULLETIN BASED ON INSAT-3D PIC OF 012130 UTC (.)

REGION COVERED BETWEEN LAT 50.0°N TO 30.0°S AND LONG 40.0°E TO 125.0°E (.)

SALIENT FEATURES:-

WESTERN DISTURBANCE (WD):-

SCT MULTILAYERED CLOUDS OVER N PAK J&K LADAKH HP UTRKND E PJBHARY DLH UP AND N/HOOD IN ASSW **WD** OVER THE AREA (.)

CLOUDS DESCRIPTION WITHIN INDIA:-

NORTH:-

SCT LOW/MED CLOUDS WITH EMBDD WK TO MOD CONVTN OVER E LADAKH HP UTRKND HARY DLH W & E UP (.) SCT LOW/MED CLOUDS OVER REST LADAKH J&K (.)

EAST:-

SCT LOW/MED CLOUDS WITH EMBDD INT TO V INT CONVTN OVER NE BHR EXT NE JHRKND SHWB SKM W ASSAM & N BD AND MOD TO INT CONVTN OVER NW BHR (.) ISOL TO SCT WK TO MOD CONVTN OVER REST BHR N JHRKND S CHTGH ORS GWB REST NE STATES (.) SCT LOW/MED CLOUDS OVER REST PARTS OF THE REGION (.)

WEST:-

SCT LOW/MED CLOUDS WITH EMBDD MOD TO INT CONVTN OVER SW RAJ N & EXT SW MP GUJ NORTH MADHYA MAHA MRTHWD VID AND WK TO MOD CONVTN OVER REST RAJ SE MP REST MAHA & GOA (.)

SOUTH:-

SCT LOW/MED CLOUDS WITH EMBDD INT TO V INT CONVTN OVER SE SIK RYLSM NW TN AND MOD TO INT CONVTN OVER N TLNGN EXT N COTL AP KER S TN ANDAMAN & NICOBAR ILS (.) SCT LOW/MED CLOUDS WITH EMBDD WK CONVTN OVER REST KRNTK REST TN (.) SCT LOW/MED CLOUDS OVER REST PARTS OF THE REGION (.)

ARABIAN SEA:-

SCT TO BKN LOW/MED CLOUDS WITH EMBDD INT TO V INT CONVTN OVER NE ARSEA GULF OF KUTCH (.) SCT LOW/MED CLOUDS WITH EMBDD MOD TO INT CONVTN OVER REST N ARSEA C ADJ SE ARSEA OFF KER COAST (.)

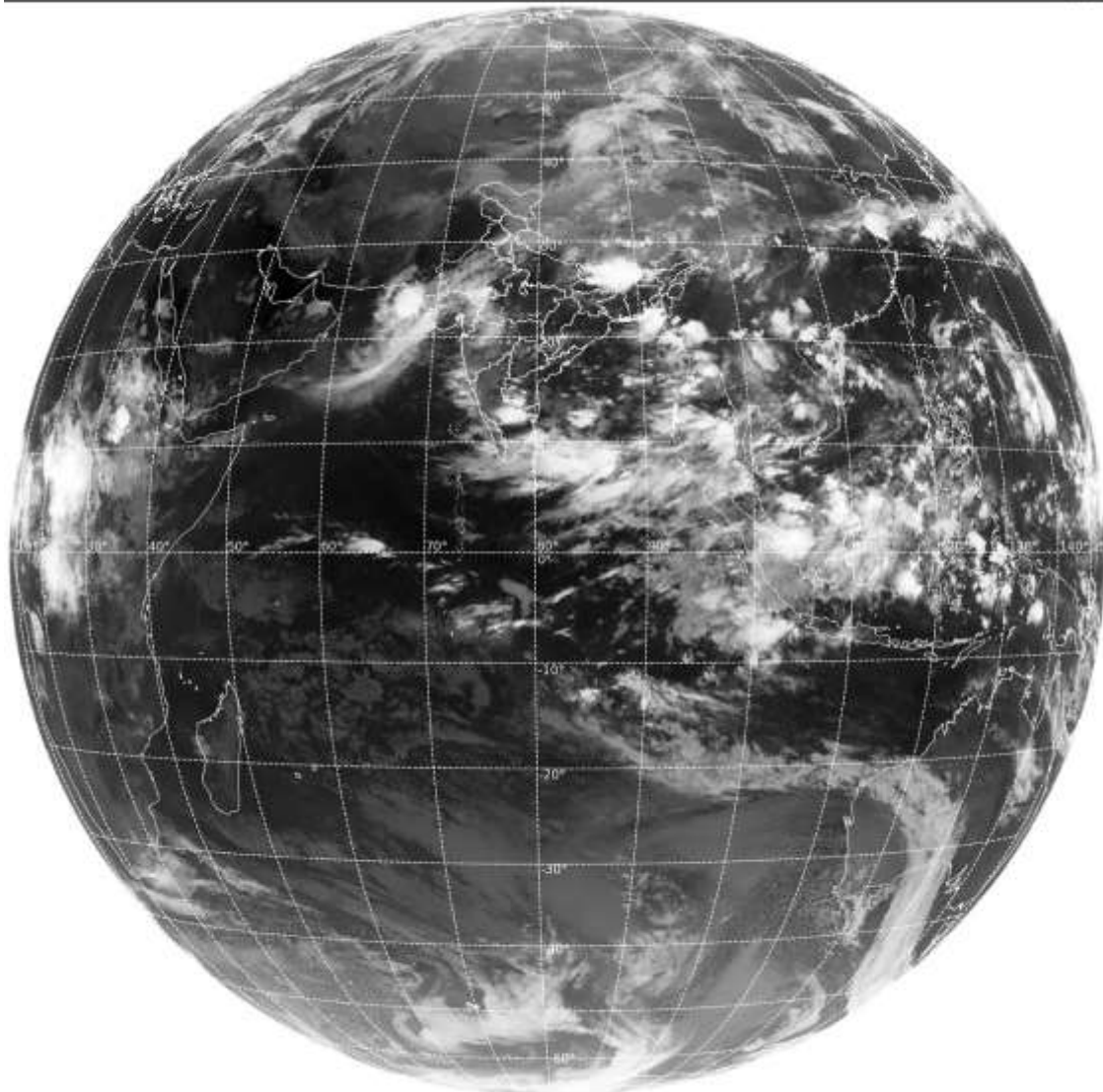
BAY OF BENGAL & ANDAMAN SEA:-

SCT LOW/MED CLOUDS WITH EMBDD INT TO V INT CONVTN OVER EXT NE -C & S BAY ANDAMAN SEA ARAKAN COT (.) SCT LOW/MED CLOUDS WITH EMBDD MOD TO INT CONVTN OVER REST N BAY & EXT SOUTH ART OF C BAY GULF OF MARTABAN (.) SCT LOW/MED CLOUDS WITH EMBDD WK CONVTN OVER REST BAY (.)

CLOUDS DESCRIPTION OUTSIDE INDIA:-

SAT : INSAT-3D IMG
Thermal Infrared1 Count 10.8 um
LIB FULL DISK

01-09-2021/(2130 to 2156) GMT
02-09-2021/(0300 to 0326) IST



SCT LOW/MED CLOUDS WITH EMBDD MOD TO INT CONVTN OVER TIBET CHINA MYANMAR SRI LANKA GULF OF MANNAR PALK STR YELLOW SEA E CHINA SEA THAILAND GULF OF THAILAND CAMBODIA LAOS N VIETNAM SUMATRA STR OF MALACCA MALAY PENINSULA BORNEO S CHINA SEA JAWA ILS & SEA CELEBES ILS & SEA PHILIPPINES AND INDIAN OCEAN BET LAT 5.0N TO 16.0S LONG 62.0E TO TO 110 (.)

TOO 02/0430F=

NNNN

LEGEND:-

REGION	NORTH	J&K HP PJB HARY DLH UP UTRKND
	EAST	BHR JHRKND CHTGH ORS WB SKMNORTH- EAST STATES
	WEST	RAJ MP GUJ MAHA GOA
	SOUTH	TLNGN AP KRNTK KER TN LKSDP ANDAMAN & NICOBAR ILS

CLOUD DISTRIBUTION	ISOL	ISOLATED (LESS THAN 25%)
	SCT	SCATTERED (25 TO 50%)
	BKN	BROKEN (51 TO 75%)
	SLD	SOLID (GREATER THAN 75%)
CLOUDS TOP TEMPERATURE	CTT	CLOUD TOP TEMPERATURE
CONVECTION	WK CONVTN	WEAK CONVECTION (CTT GREATER THAN -25°C)
	MOD CONVTN	MODERATE CONVECTION (CTT BETWEEN -25°C TO -40°C)
	INT CONVTN	INTENSE CONVECTION (CTT BETWEEN -41°C TO -70°C)
	V INT CONVTN	VERY INTENSE CONVECTION (CTT LESS THAN -70°C)
METEOROLOGICAL SUB-DIVISIONS, STATES & UNION TERRITORIES	ARUPR	ARUNACHAL PRADESH
	BHR	BIHAR
	CHTGH	CHHATTISGARH
	COTL AP	COASTAL ANDHRA PRADESH
	COTL KRNTK	COASTAL KARNATAKA
	COTL ORS	COASTAL ORISSA
	GUJ	GUJARAT
	GWB	GANGETIC WEST BENGAL
	HARY	HARYANA
	DLH	DELHI
	HP	HIMACHAL PRADESH
	J&K	JAMMU AND KASHMIR
	JHRKND	JHARKHAND
	KER	KERALA
KKN	KONKAN	
LKSDP	LAKSHADWEEP	

	M MAHA	MADHYA MAHARASHTRA
	MAHA	MAHARASHTRA
	MANI	MANIPUR
	MEGHA	MEGHALAYA
	MIZO	MIZORAM
	MP	MADHYA PRADESH
	MRTHWD	MARATHWADA
	NAGA	NAGALAND
	N COTL AP	NORTH COASTAL ANDHRA PRADESH
	NIK	NORTH INTERIOR KARNATAKA
	ORS	ORISSA
	PJB	PUNJAB
	RAJ	RAJASTHAN
	RYLSM	RAYALASEEMA
	SAU & KUTCH	SAURASHTRA & KUTCH
	SHWB	SUB-HIMALAYAN WEST BENGAL
	SIK	SOUTH INTERIOR KARNATAKA
	SKM	SIKKIM
	TLNGN	TELANGANA
	TN	TAMIL NADU
	TRP	TRIPURA
	UP	UTTAR PRADESH
	UTRKN	UTTARAKHAND
	VID	VIDHARBHA
	SHWB	SUB HIMALAYAN WEST BENGAL
	GWB	GANGETIC WEST BENGAL
	ARSEA	ARABIAN SEA
	ILS	ISLANDS
MISCELLANEOUS	ASSW	IN ASSOCIATION WITH
	ASSTD	ASSOCIATED
	LLC	LOW LEVEL CIRCULATION
	EMBDD	EMBEDDED
	N/HOOD	NEIGHBOURHOOD
	EXT	EXTREME