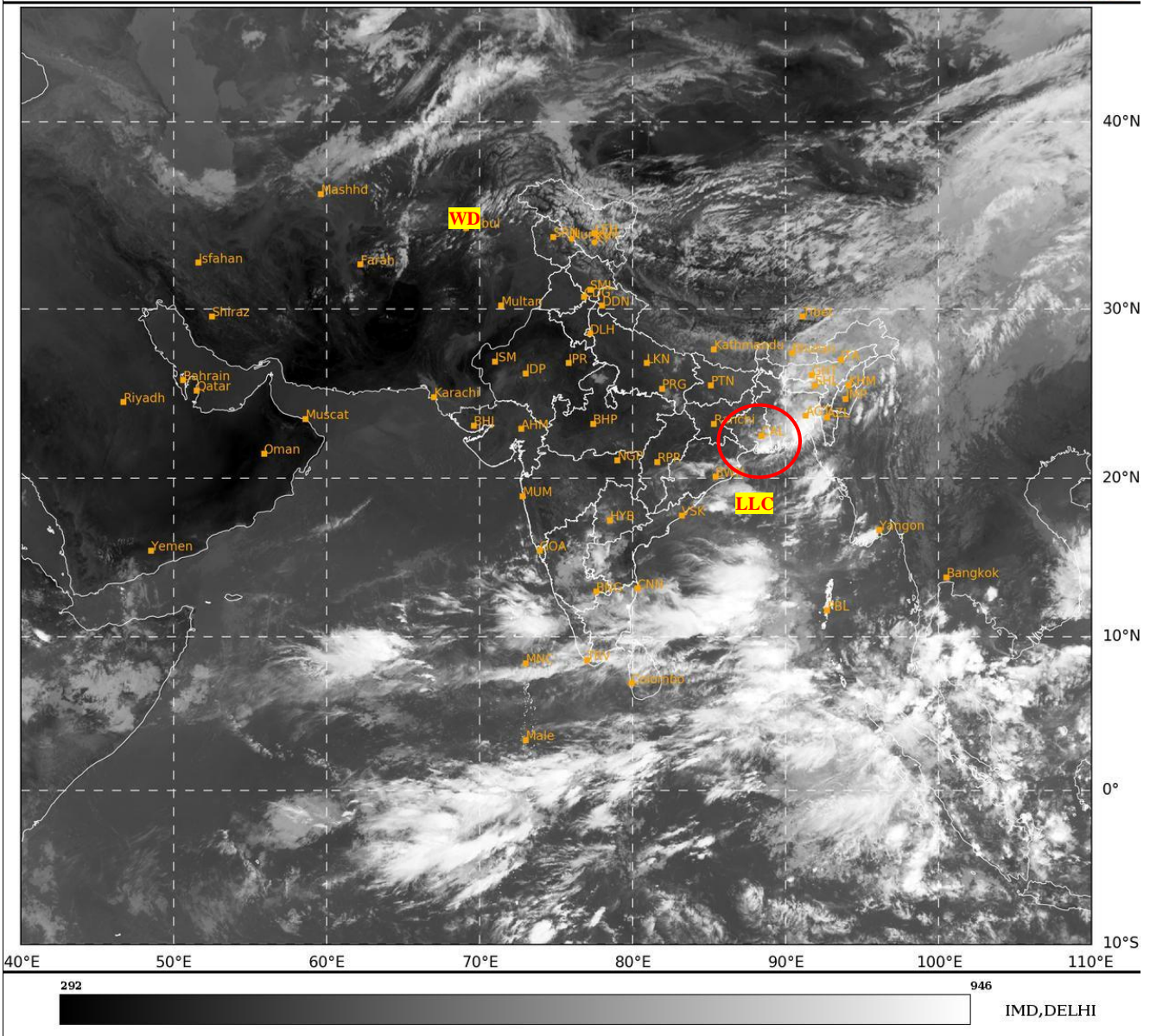




**SATELLITE BULLETIN BASED ON SATELLITE  
IMAGERIES AND PRODUCTS**  
**05.10.2024 TIME 0600 UTC**

SAT : INSAT-3DR IMG  
IMG\_TIR1 10.8 um  
LIC Mercator

05-10-2024/(0545 to 0612) GMT  
05-10-2024/(1115 to 1142) IST



TCIN50 DEMS 050600

SATELLITE BULLETIN BASED ON INSAT-3DR PIC OF 050545 UTC (.)

REGION COVERED BETWEEN LAT 50.0°N TO 35.0°S AND LONG 40.0°E TO 125.0°E (.)

**SALIENT FEATURES:-**

**CONVECTION OVER NW BAY ADJ GANGETIC WEST BENGAL & BANGLADESH COASTS:-**

INTENSE CONVTN OVER NORTH WEST BAY ADJ GWB & BD COASTS PERSISTS (MINIMUM CTT MINUS 75 DEG CEL) AND MODERATE CONVTN OVER S GWB BD ORS ASSAM MEGHA TRP (.)

**WESTERN DISTURBANCE (WD):-**

SCT MULTILAYERED CLOUDS OVER AFGAN N PAK LADAKH AND N/HOOD IN ASSW WD OVER THE AREA (.)

**CONVECTIVE / THUNDERSTORM ACTIVITY:-**

MODERATE TO INTENSE CONVECTIVE / THUNDERSTORM ACTIVITY OBSERVED OVER S GWB BD TRP ASSAM MEGHA LKSDP ILS AREA ORS KRNTK RYLSM S KER TN (MINIMUM CTT MINUS 50-70 DEG CEL) (.)



INSAT-3DR 05-OCT-2024 05:45 WV IMG

WATER VAPOUR WIND

(1Kt = 0.5 m/s)

10 Kt

15 Kt

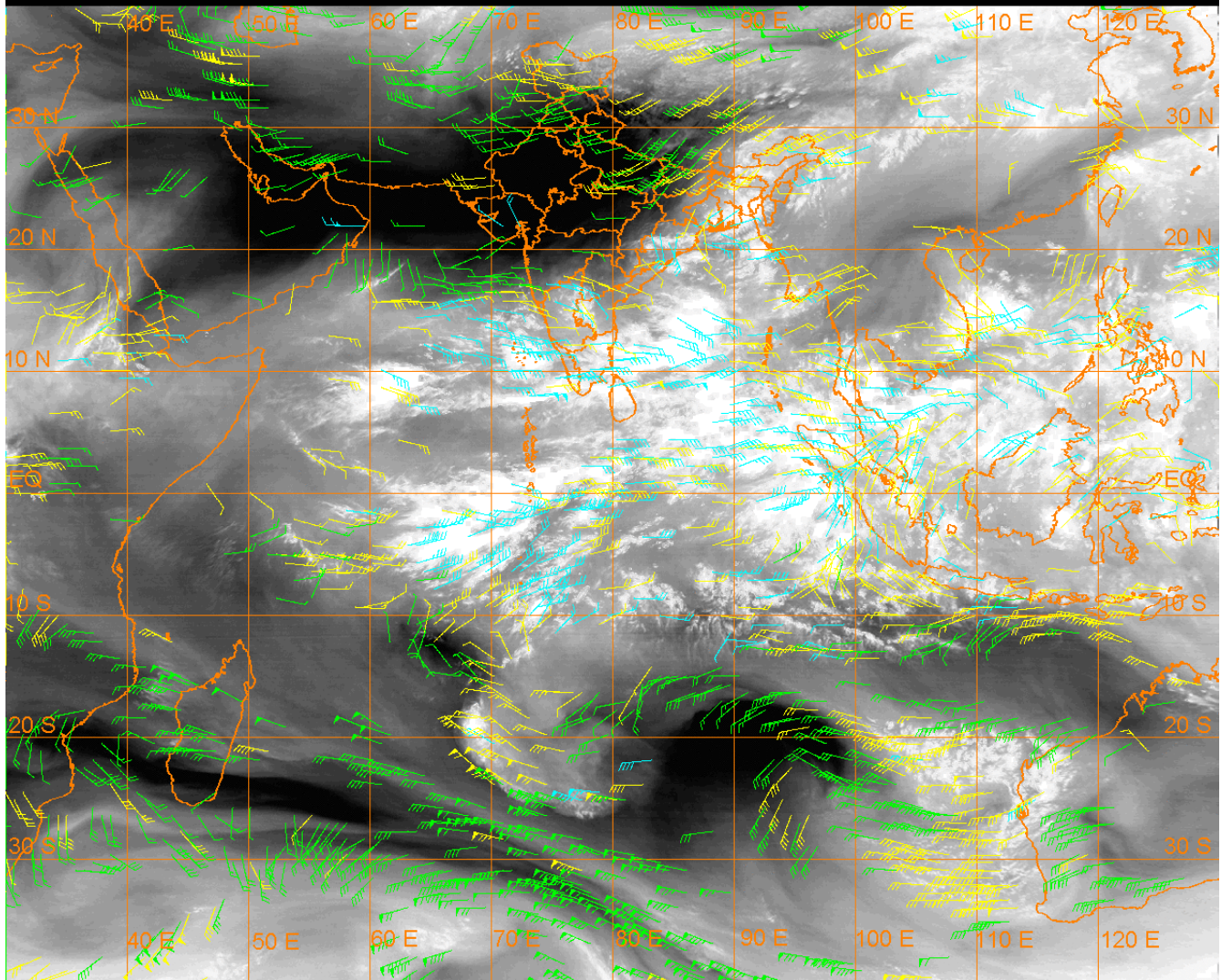
20 Kt

50 Kt

100-250 hPa

251-350 hPa

351-500 hPa



**CLOUDS DESCRIPTION WITHIN INDIA:-**

**NORTH:-**

SCT LOW/MED CLOUDS WITH EMBDD WK TO MOD CONVTN OVER LADAKH J&K N HP N UTRKND E UP (.) SCT LOW/MED CLOUDS OVER S HP S UTRKND W UP (.)

**EAST:-**

SCT LOW/MED CLOUDS WITH EMBDD MOD TO INT CONVTN OVER S GWB BD TRP ASSAM MEGHA ORS AND WK TO MOD CONVTN OVER N GWB SKM REST NE STATES (.) SCT LOW/MED CLOUDS OVER BHR CHTGH JHRKND SHWB (.)

**WEST:-**

SCT LOW/MED CLOUDS WITH EMBDD ISOL WK CONVTN OVER N MP S KKN GOA (.) ISOL TO SCT LOW/MED CLOUDS OVER RAJ S MP GUJ REST MAHA (.)

**SOUTH:-**

SCT LOW/MED CLOUDS WITH EMBDD MOD TO INT CONVTN OVER RYLSM S KER TN LKSDP ILS AND WK TO MOD CONVTN OVER KRNTK TLNGN COTL AP N KER ANDAMAN & NICOBAR ILS (.)

**ARABIAN SEA:-**

SCT LOW/MED CLOUDS WITH EMBDD INT TO V INT CONVTN OVER SOUTH ARSEA (MINIMUM CTT MINUS 70-85 DEG CEL) (.) SCT LOW/MED CLOUDS WITH EMBDD MOD TO INT CONVTN OVER EC ARSEA LKSDP ILS AREA & COMORIN AREA (.)

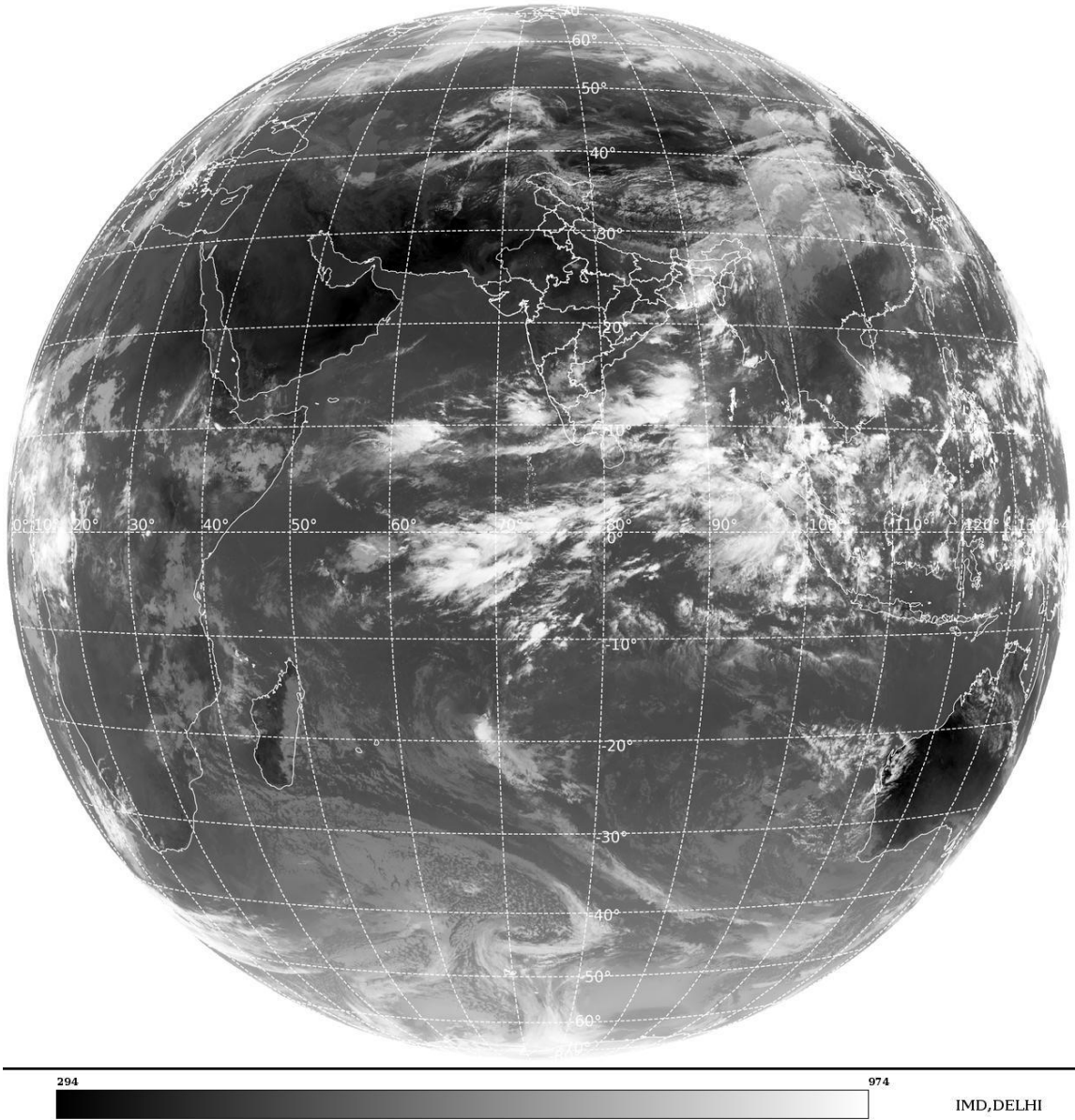
**BAY OF BENGAL & ANDAMAN SEA:-**

SCT LOW/MED CLOUDS WITH EMBDD INT TO V INT CONVTN OVER BAY & SOUTH ANDAMAN SEA (MINIMUM CTT MINUS 75-90 DEG CEL) (.) SCT LOW/MED CLOUDS WITH EMBDD MOD TO INT CONVTN OVER NORTH ANDAMAN SEA (.)

**CLOUDS DESCRIPTION OUTSIDE INDIA:-**

SAT : INSAT-3DR IMG  
Thermal Infrared1 Count 10.8 um  
L1B FULL DISK

05-10-2024/(0545 to 0612) GMT  
05-10-2024/(1115 to 1142) IST



**SCT LOW/MED CLOUDS WITH EMBDD MOD TO INT CONVTN OVER SRI LANKA PALK STR GULF OF MANNAR BHUTAN TIBET CHINA YELLOW SEA EAST CHINA SEA TAIWAN MYANMAR THAILAND GULF OF THAILAND CAMBODIA VIETNAM SUMATRA STR OF MALACCA MALAYSIA BORNEO SOUTH CHINA SEA JAVA ILS & SEA CELEBES ILS & SEA PHILIPPINES SULU SEA AND OVER INDIAN OCEAN BET LAT 5.0N TO 20.0S LONG 50.0E TO 110.0E (.)**

**TOO 05/1220 HRS IST=**

**NNNN**

**LEGEND:-**

|               |              |                                                              |
|---------------|--------------|--------------------------------------------------------------|
| <b>REGION</b> | <b>NORTH</b> | <b>J&amp;K HP PJB HARY DLH UP UTRKND</b>                     |
|               | <b>EAST</b>  | <b>BHR JHRKND CHTGH ORS WB SKM NORTH- EAST STATES</b>        |
|               | <b>WEST</b>  | <b>RAJ MP GUJ MAHA GOA</b>                                   |
|               | <b>SOUTH</b> | <b>TLNGN AP KRNTK KER TN LKSDP ANDAMAN &amp; NICOBAR ILS</b> |

|                                                                      |                     |                                                         |                   |
|----------------------------------------------------------------------|---------------------|---------------------------------------------------------|-------------------|
| <b>CLOUD DISTRIBUTION</b>                                            | <b>ISOL</b>         | <b>ISOLATED (LESS THAN 25%)</b>                         |                   |
|                                                                      | <b>SCT</b>          | <b>SCATTERED (25 TO 50%)</b>                            |                   |
|                                                                      | <b>BKN</b>          | <b>BROKEN (51 TO 75%)</b>                               |                   |
|                                                                      | <b>SLD</b>          | <b>SOLID (GREATER THAN 75%)</b>                         |                   |
| <b>CLOUDS TOP TEMPERATURE</b>                                        | <b>CTT</b>          | <b>CLOUD TOP TEMPERATURE</b>                            |                   |
| <b>CONVECTION</b>                                                    | <b>WK CONVTN</b>    | <b>WEAK CONVECTION (CTT GREATER THAN -25°C)</b>         |                   |
|                                                                      | <b>MOD CONVTN</b>   | <b>MODERATE CONVECTION (CTT BETWEEN -25°C TO -40°C)</b> |                   |
|                                                                      | <b>INT CONVTN</b>   | <b>INTENSE CONVECTION (CTT BETWEEN -41°C TO -70°C)</b>  |                   |
|                                                                      | <b>V INT CONVTN</b> | <b>VERY INTENSE CONVECTION (CTT LESS THAN -70°C)</b>    |                   |
| <b>METEOROLOGICAL SUB- DIVISIONS, STATES &amp; UNION TERRITORIES</b> | <b>ARUPR</b>        | <b>ARUNACHAL PRADESH</b>                                |                   |
|                                                                      | <b>BHR</b>          | <b>BIHAR</b>                                            |                   |
|                                                                      | <b>CHTGH</b>        | <b>CHHATTISGARH</b>                                     |                   |
|                                                                      | <b>COTL AP</b>      | <b>COASTAL ANDHRA PRADESH</b>                           |                   |
|                                                                      | <b>COTL KRNTK</b>   | <b>COASTAL KARNATAKA</b>                                |                   |
|                                                                      | <b>COTL ORS</b>     | <b>COASTAL ORISSA</b>                                   |                   |
|                                                                      | <b>GUJ</b>          | <b>GUJARAT</b>                                          |                   |
|                                                                      | <b>GWB</b>          | <b>GANGETIC WEST BENGAL</b>                             |                   |
|                                                                      | <b>HARY</b>         | <b>HARYANA</b>                                          |                   |
|                                                                      | <b>DLH</b>          | <b>DELHI</b>                                            |                   |
|                                                                      | <b>HP</b>           | <b>HIMACHAL PRADESH</b>                                 |                   |
|                                                                      | <b>J&amp;K</b>      | <b>JAMMU AND KASHMIR</b>                                |                   |
|                                                                      | <b>JHRKND</b>       | <b>JHARKHAND</b>                                        |                   |
|                                                                      | <b>KER</b>          | <b>KERALA</b>                                           |                   |
|                                                                      | <b>KKN</b>          | <b>KONKAN</b>                                           |                   |
|                                                                      | <b>LKSDP</b>        | <b>LAKSHADWEEP</b>                                      |                   |
|                                                                      | <b>M MAHA</b>       | <b>MADHYA MAHARASHTRA</b>                               |                   |
|                                                                      | <b>MAHA</b>         | <b>MAHARASHTRA</b>                                      |                   |
|                                                                      | <b>MANI</b>         | <b>MANIPUR</b>                                          |                   |
|                                                                      | <b>MEGHA</b>        | <b>MEGHALAYA</b>                                        |                   |
|                                                                      | <b>MIZO</b>         | <b>MIZORAM</b>                                          |                   |
|                                                                      | <b>MP</b>           | <b>MADHYA PRADESH</b>                                   |                   |
|                                                                      |                     | <b>MRTHWD</b>                                           | <b>MARATHWADA</b> |
|                                                                      |                     | <b>NAGA</b>                                             | <b>NAGALAND</b>   |
| <b>N COTL AP</b>                                                     |                     | <b>NORTH COASTAL ANDHRA PRADESH</b>                     |                   |
| <b>NIK</b>                                                           |                     | <b>NORTH INTERIOR KARNATAKA</b>                         |                   |
| <b>ORS</b>                                                           |                     | <b>ORISSA</b>                                           |                   |
| <b>PJB</b>                                                           |                     | <b>PUNJAB</b>                                           |                   |
| <b>RAJ</b>                                                           |                     | <b>RAJASTHAN</b>                                        |                   |
| <b>RYLSM</b>                                                         |                     | <b>RAYALASEEMA</b>                                      |                   |
| <b>SAU &amp; KUTCH</b>                                               |                     | <b>SAURASHTRA &amp; KUTCH</b>                           |                   |
| <b>SHWB</b>                                                          |                     | <b>SUB-HIMALAYAN WEST BENGAL</b>                        |                   |
| <b>SIK</b>                                                           |                     | <b>SOUTH INTERIOR KARNATAKA</b>                         |                   |
| <b>SKM</b>                                                           |                     | <b>SIKKIM</b>                                           |                   |

|                      |               |                                  |
|----------------------|---------------|----------------------------------|
|                      | <b>TLNGN</b>  | <b>TELANGANA</b>                 |
|                      | <b>TN</b>     | <b>TAMIL NADU</b>                |
|                      | <b>TRP</b>    | <b>TRIPURA</b>                   |
|                      | <b>UP</b>     | <b>UTTAR PRADESH</b>             |
|                      | <b>UTRKND</b> | <b>UTTARAKHAND</b>               |
|                      | <b>VID</b>    | <b>VIDHARBHA</b>                 |
|                      | <b>SHWB</b>   | <b>SUB HIMALAYAN WEST BENGAL</b> |
|                      | <b>GWB</b>    | <b>GANGETIC WEST BENGAL</b>      |
|                      | <b>ARSEA</b>  | <b>ARABIAN SEA</b>               |
|                      | <b>ILS</b>    | <b>ISLANDS</b>                   |
| <b>MISCELLANEOUS</b> | <b>ASSW</b>   | <b>IN ASSOCIATION WITH</b>       |
|                      | <b>ASSTD</b>  | <b>ASSOCIATED</b>                |
|                      | <b>LLC</b>    | <b>LOW LEVEL CIRCULATION</b>     |
|                      | <b>EMBDD</b>  | <b>EMBEDDED</b>                  |
|                      | <b>N/HOOD</b> | <b>NEIGHBOURHOOD</b>             |
|                      | <b>EXT</b>    | <b>EXTREME</b>                   |