

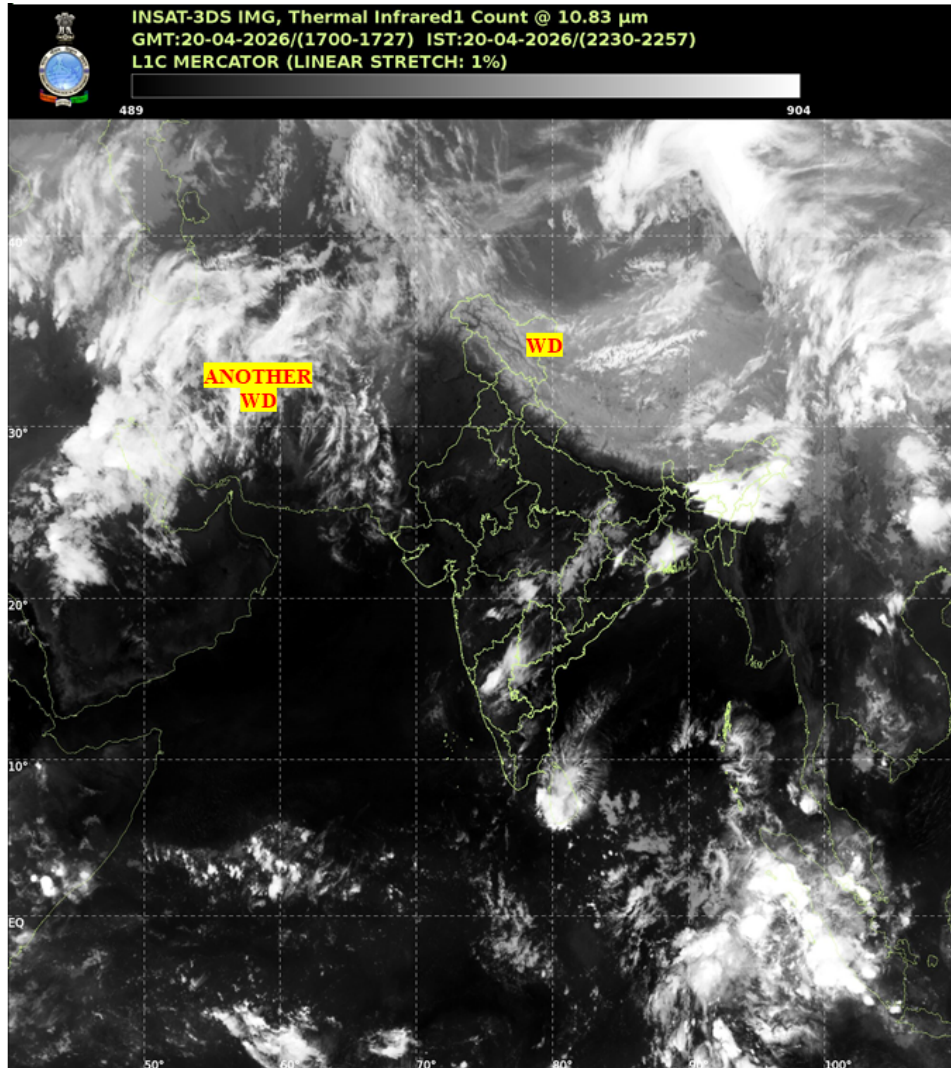


भारत मौसम विज्ञान विभाग  
पृथ्वी विज्ञान मंत्रालय  
India Meteorological Department  
Ministry of Earth Sciences



**SATELLITE BULLETIN BASED ON SATELLITE IMAGERIES AND PRODUCTS**

Date: 2026-04-20 Time: 18:00:00 UTC



TCIN50 DEMS 201800

SATELLITE BULLETIN BASED ON INSAT-3DS PIC OF 201800 UTC (.)

REGION COVERED BETWEEN LAT 50.0°N TO 35.0°S AND LONG 40.0°E TO 125.0°E (.)

**SALIENT FEATURES:**

**WESTERN DISTURBANCE (WD):-**

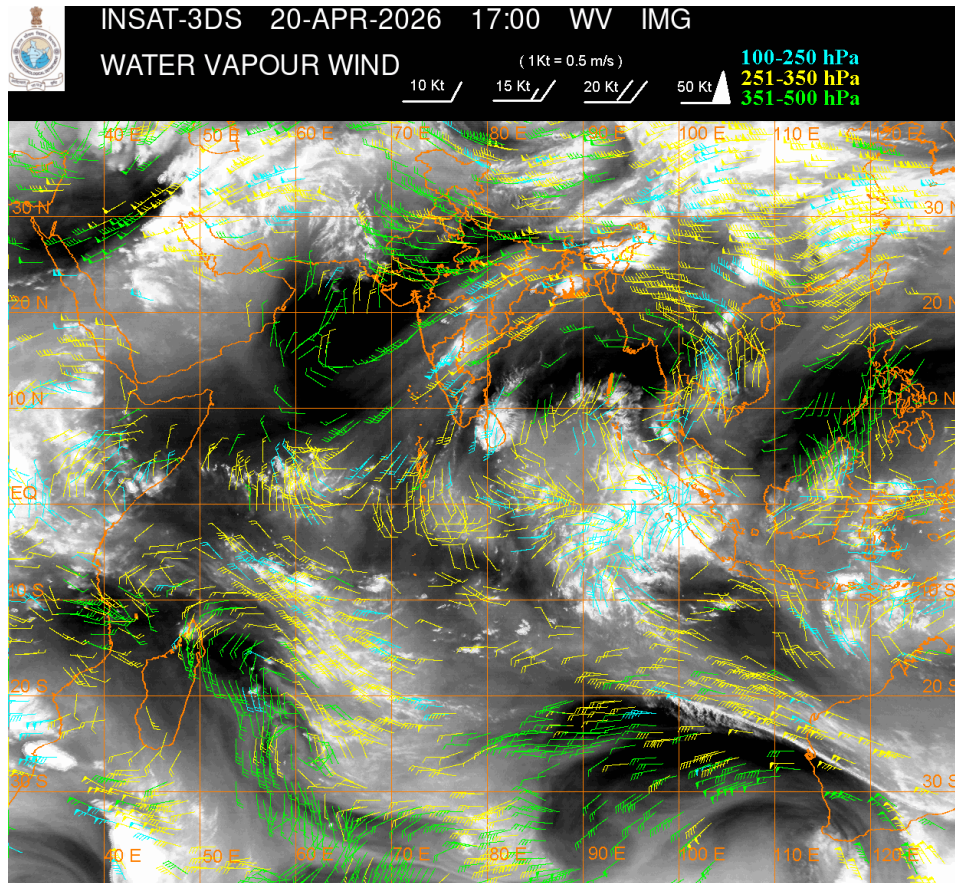
SCT MULTILAYERED CLOUDS OVER TIBET ADJ CHINA IN ASSW WD OVER THE AREA (.)

SCT TO BKN MULTILAYERED CLOUDS OVER IRAQ PERSIAN GULF IRAN S PAK AND N/HOOD IN ASSW ANOTHER WD OVER THE AREA (.)

**CONVECTIVE / THUNDERSTORM ACTIVITY:-**

**INTENSE TO VERY INTENSE CONVECTIVE / THUNDERSTORM ACTIVITY OVER GWB NE STATES (MINIMUM CTT MINUS 70-85 DEGREE CELSIUS)(.)**

**MODERATE TO INTENSE CONVECTIVE / THUNDERSTORM ACTIVITY OVER NIK VID ANDAMAN & NICOBAR ILS AREA (MINIMUM CTT MINUS 40-70 DEGREE CELSIUS) (.)**



**CLOUD DESCRIPTION WITHIN INDIA:**

**NORTH:**

**SCT LOW/MED CLOUDS WITH EMBDD ISOL WK TO MOD CONVTN OVER LADAKH J&K E UP (.) ISOL TO SCT LOW/MED CLOUDS OVER HP UTRKND HARY DLH REST UP (.)**

**EAST:**

**SCT LOW/MED CLOUDS WITH EMBDD INT TO V INT CONVTN OVER NE STATES (.) SCT LOW/MED CLOUDS WITH EMBDD MOD TO INT CONVTN OVER GWB (.) SCT LOW/MED CLOUDS WITH EMBDD WK TO MOD CONVTN OVER JHRKND CHTGH ORS (.) SCT LOW/MED CLOUDS OVER SHWB SKM & BD (.)**

**WEST:**

**SCT LOW/MED CLOUDS WITH EMBDD MOD TO INT CONVTN OVER VID AND ISOL WK TO MOD CONVTN OVER E MP (.) ISOL TO SCT LOW/MED CLOUDS OVER GUJ RAJ REST MAHA W MP (.)**

**SOUTH:**

**SCT LOW/MED CLOUDS WITH EMBDD MOD TO INT CONVTN OVER NIK ANDAMAN & NICOBAR ILS AREA (.) SCT LOW/MED CLOUDS WITH EMBDD ISOL WK TO MOD CONVTN OVER TLNGN RYLSM (.) SCT LOW/MED CLOUDS OVER COTL AP TN LKSDP ILS (.)**

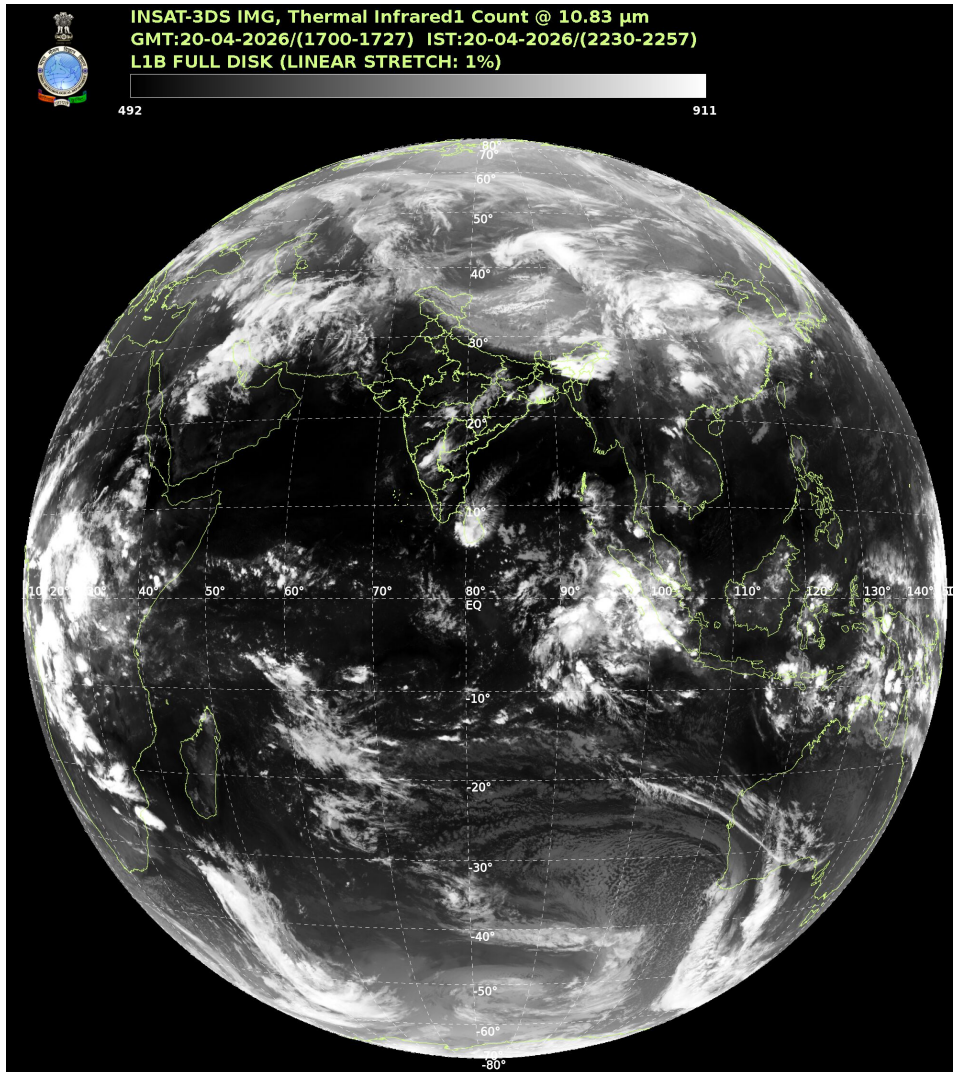
**ARABIAN SEA:**

**SCT LOW/MED CLOUDS WITH EMBDD MOD TO INT CONVTN OVER EXT SOUTH ARSEA ADJ EQUATORIAL INDIAN OCEAN (.)**

**BAY OF BENGAL & ANDAMAN SEA:**

SCT TO BKN LOW/MED CLOUDS WITH EMBDD MOD TO INT CONVTN OVER SOUTH BAY AND SOUTH ANDAMAN SEA (.)

**CLOUD DESCRIPTION OUTSIDE INDIA:**



SCT LOW/MED CLOUDS WITH EMBDD MOD TO INT CONVTN OVER SRI LANKA PALK STR GULF OF MANNAR MALDIVES AREA PAK BHUTAN TIBET CHINA YELLOW SEA ADJ EAST CHINA SEA MYANMAR THAILAND GULF OF THAILAND CAMBODIA LAOS VIETNAM GULF OF TONKIN HAINAN SUMATRA STR OF MALACCA MALAYSIA BORNEO SOUTH CHINA SEA JAVA ILS & SEA CELEBES ILS & SEA PHILIPPINES MADAGASCAR MOZAMBIQUE CHANNEL AND OVER INDIAN OCEAN BET LAT 5.0N TO 35.0S LONG 40.0E TO 110.0E (.)8  
 T00 21/0010 HRS IST

NNNN

**LEGEND**

REGION	
NORTH	J&K HP UTRKND PJB HARY DLH UP
EAST	BHR JHRKND CHTGH ORS WB SKM NORTH-EAST STATES
WEST	RAJ MP GUJ MAHA GOA

<b>SOUTH</b>	<b>TLNGN AP KRNTK KER TN LKSDP ANDAMAN &amp; NICOBAR ILS</b>
<b>CLOUD DISTRIBUTION</b>	
<b>ISOL</b>	<b>ISOLATED (LESS THAN 25%)</b>
<b>SCT</b>	<b>SCATTERED (25 TO 50%)</b>
<b>BKN</b>	<b>BROKEN (51 TO 75%)</b>
<b>SLD</b>	<b>SOLID (GREATER THAN 75%)</b>
<b>CLOUDS TOP TEMPERATURE</b>	
<b>CTT</b>	<b>CLOUD TOP TEMPERATURE</b>
<b>CONVECTION</b>	
<b>WK CONVTN</b>	<b>WEAK CONVECTION (CTT GREATER THAN -25°C)</b>
<b>MOD CONVTN</b>	<b>MODERATE CONVECTION (CTT BETWEEN -25°C TO -40°C)</b>
<b>INT CONVTN</b>	<b>INTENSE CONVECTION (CTT BETWEEN -41°C TO -70°C)</b>
<b>V INT CONVTN</b>	<b>VERY INTENSE CONVECTION (CTT LESS THAN -70°C)</b>
<b>METEOROLOGICAL SUB-DIVISIONS, STATES &amp; UNION TERRITORIES</b>	
<b>J&amp;K</b>	<b>JAMMU AND KASHMIR</b>
<b>HP</b>	<b>HIMACHAL PRADESH</b>
<b>UTRKND</b>	<b>UTTARAKHAND</b>
<b>PJB</b>	<b>PUNJAB</b>
<b>HARY</b>	<b>HARYANA</b>
<b>DLH</b>	<b>DELHI</b>
<b>BHR</b>	<b>BIHAR</b>
<b>JHRKND</b>	<b>JHARKHAND</b>
<b>CHTGH</b>	<b>CHHATTISGARH</b>
<b>ORS</b>	<b>ORISSA</b>
<b>GWB</b>	<b>GANGETIC WEST BENGAL</b>
<b>SHWB</b>	<b>SUB-HIMALAYAN WEST BENGAL</b>
<b>SKM</b>	<b>SIKKIM</b>
<b>ARUPR</b>	<b>ARUNACHAL PRADESH</b>
<b>ASSAM</b>	<b>ASSAM</b>
<b>MEGHA</b>	<b>MEGHALAYA</b>
<b>MANI</b>	<b>MANIPUR</b>
<b>MIZO</b>	<b>MIZORAM</b>
<b>TRP</b>	<b>TRIPURA</b>
<b>RAJ</b>	<b>RAJASTHAN</b>

<b>MP</b>	<b>MADHYA PRADESH</b>
<b>GUJ</b>	<b>GUJARAT</b>
<b>SAU &amp; KUTCH</b>	<b>SAURASHTRA &amp; KUTCH</b>
<b>MAHA</b>	<b>MAHARASHTRA</b>
<b>M MAHA</b>	<b>MADHYA MAHARASHTRA</b>
<b>MRTHWD</b>	<b>MARATHWADA</b>
<b>VID</b>	<b>VIDARBHA</b>
<b>KKN</b>	<b>KONKAN</b>
<b>TLNGN</b>	<b>TELANGANA</b>
<b>RYLSM</b>	<b>RAYALSEEMA</b>
<b>COTL AP</b>	<b>COASTAL ANDHRA PRADESH</b>
<b>NIK</b>	<b>NORTH INTERIOR KARNATAKA</b>
<b>SIK</b>	<b>SOUTH INTERIOR KARNATAKA</b>
<b>COTL KRNTK</b>	<b>COASTAL KARNATAKA</b>
<b>KER</b>	<b>KERALA</b>
<b>TN</b>	<b>TAMILNADU</b>
<b>LKSDP</b>	<b>LAKSHADWEEP</b>
<b>ILS</b>	<b>ISLANDS</b>
<b>ARSEA</b>	<b>ARABIAN SEA</b>
<b>MISCELLANEOUS</b>	
<b>ASSW</b>	<b>IN ASSOCIATION WITH</b>
<b>ASSTD</b>	<b>ASSOCIATED</b>
<b>LLC</b>	<b>LOW LEVEL CIRCULATION</b>
<b>EMBDD</b>	<b>EMBEDDED</b>
<b>N/HOOD</b>	<b>NEIGHBOURHOOD</b>
<b>EXT</b>	<b>EXTREME</b>