

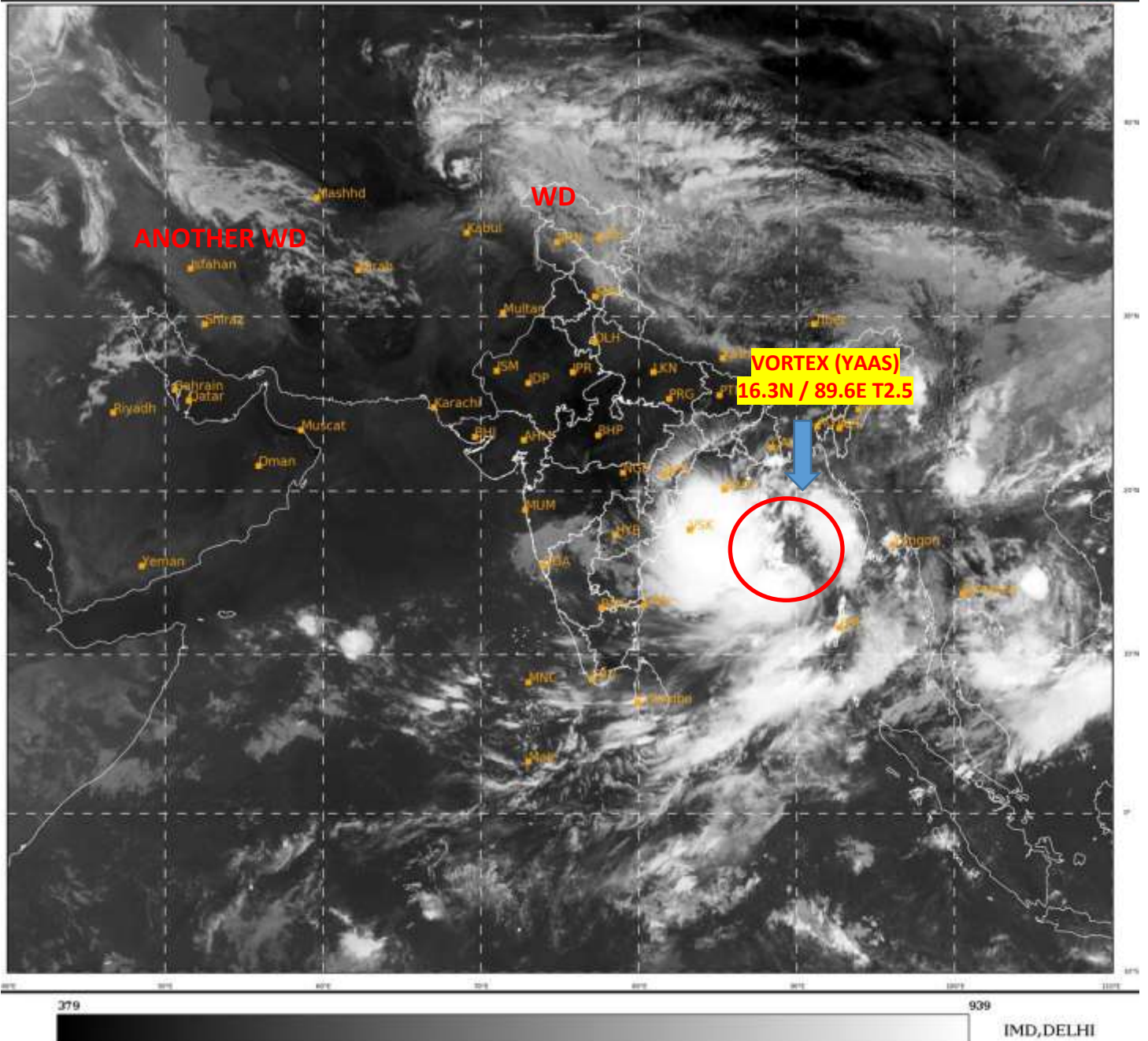


**SATELLITE BULLETIN BASED ON SATELLITE IMAGERIES
AND PRODUCTS**

24.05.2021 TIME 0300 UTC

SAT : INSAT-3D IMG
IMG_TIR1 10.8 um
LIC Mercator

24-05-2021/(0300 to 0327) GMT
24-05-2021/(0830 to 0857) IST



TCIN50 DEMS 240300

SATELLITE BULLETIN BASED ON INSAT-3D PIC OF 240300 UTC (.)

REGION COVERED BETWEEN LAT 50.0°N TO 30.0°S AND LONG 40.0°E TO 125.0°E (.)

SALIENT FEATURES:-

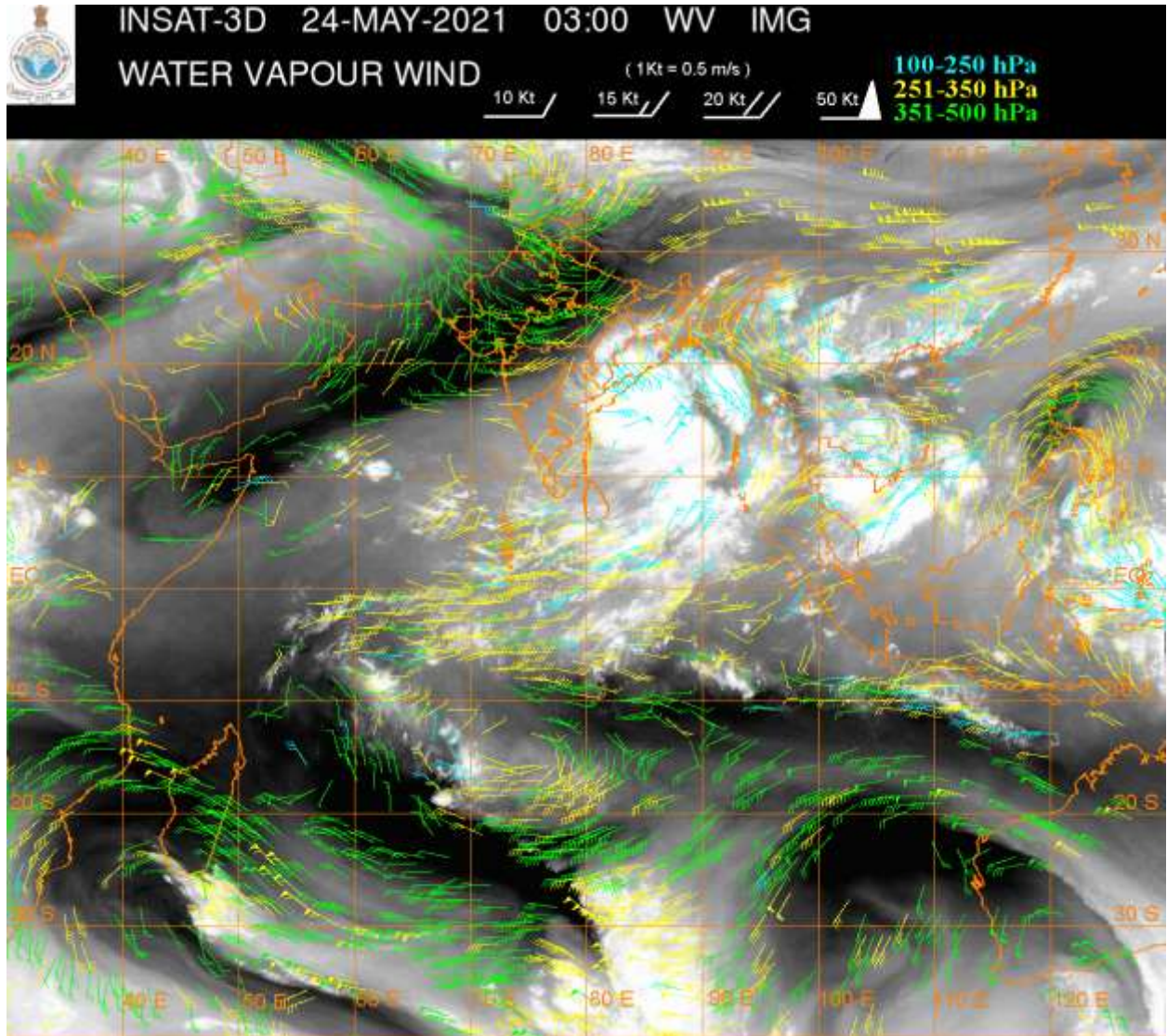
VORTEX (YAAS) OVER EAST-CENTRAL BAY OF BENGAL & N/HOOD:-

VORTEX (YAAS) OVER EAST-CENTRAL BAY & N/HOOD HAS FURTHER INTENSIFIED AND NOW LAY CENTERED NEAR 16.3N/89.6E (.) INTENSITY T2.5 RPT T2.5 (.) CURVE BAND PATTERN WITH WRAP APPROXI =0.5 ON LOG 10 DEGREE SRIRAL YIELD A DT=2.5 (.) ASSTD BKN LOW/MED CLOUDS WITH EMBDD INT TO V INT CONVTVN OVER BAY BET LAT 11.0N TO 20.0N AND LONG 82.0E TO 94.0E (MINIMUM CTT MINUS 93 DEG C) (.)

WESTERN DISTURBANCE (WD):-

SCT MULTILAYERED CLOUDS OVER N PAK LADAKH J&K HP EXT W TIBET IN ASSW **WD** OVER THE AREA (.)

SCT MULTILAYERED CLOUDS OVER S CASPIAN SEA IRAN & N/HOOD IN ASSW ANOTHER **WD** OVER THE AREA (.)



CLOUDS DESCRIPTION WITHIN INDIA:-

NORTH:-

SCT LOW/MED CLOUDS WITH EMBDD WK TO MOD CONVTN OVER LADAKH J&K N HP N UTRKND (.) SCT LOW/MED CLOUDS OVER S HP S UTRKND EXT E UP (.)

EAST:-

SCT LOW/MED CLOUDS WITH EMBDD INT TO V INT CONVTN OVER COTL ORS (MINIMUM CTT MINUS **93** DEG C) (.) SCT LOW/MED CLOUDS WITH EMBDD MOD TO INT CONVTN OVER REST ORS CHTGH S JHRKND EXT W ASSAM & N BD (.) SCT LOW/MED CLOUDS WITH EMBDD ISOL WK TO MOD CONVTN OVER REST JHRKND REST ASAM NAGA MANI GWB SKM ARUPR (.) SCT LOW/MED CLOUDS OVER EXT SW BHR SHWB MEGHA TRP MIZO (.)

WEST:-

SCT LOW/MED CLOUDS WITH EMBDD ISOL WK CONVTN OVER S MADHYA MAHA S KKN & GOA (.) SCT LOW/MED CLOUDS OVER E MP S VID (.)

SOUTH:-

SCT LOW/MED CLOUDS WITH EMBDD INT TO V INT CONVTN OVER N COTL AP (MINIMUM CTT MINUS **90** DEG C) ANDAMAN & NICOBAR ILS (MINIMUM CTT MINUS **80** DEG C) (.) SCT LOW/MED CLOUDS WITH EMBDD MOD TO INT CONVTN OVER S COTL AP (.) SCT LOW/MED CLOUDS WITH EMBDD ISOL WK TO MOD CONVTN OVER RYLSM TLNGN REST AP NIK KER S TN (.) SCT LOW/MED CLOUDS OVER REST KRNTK RSET TN LKSDP (.)

ARABIAN SEA:-

SCT LOW/MED CLOUDS WITH EMBDD MOD TO INT CONV TN OVER S ARSEA & COMORIN (.)

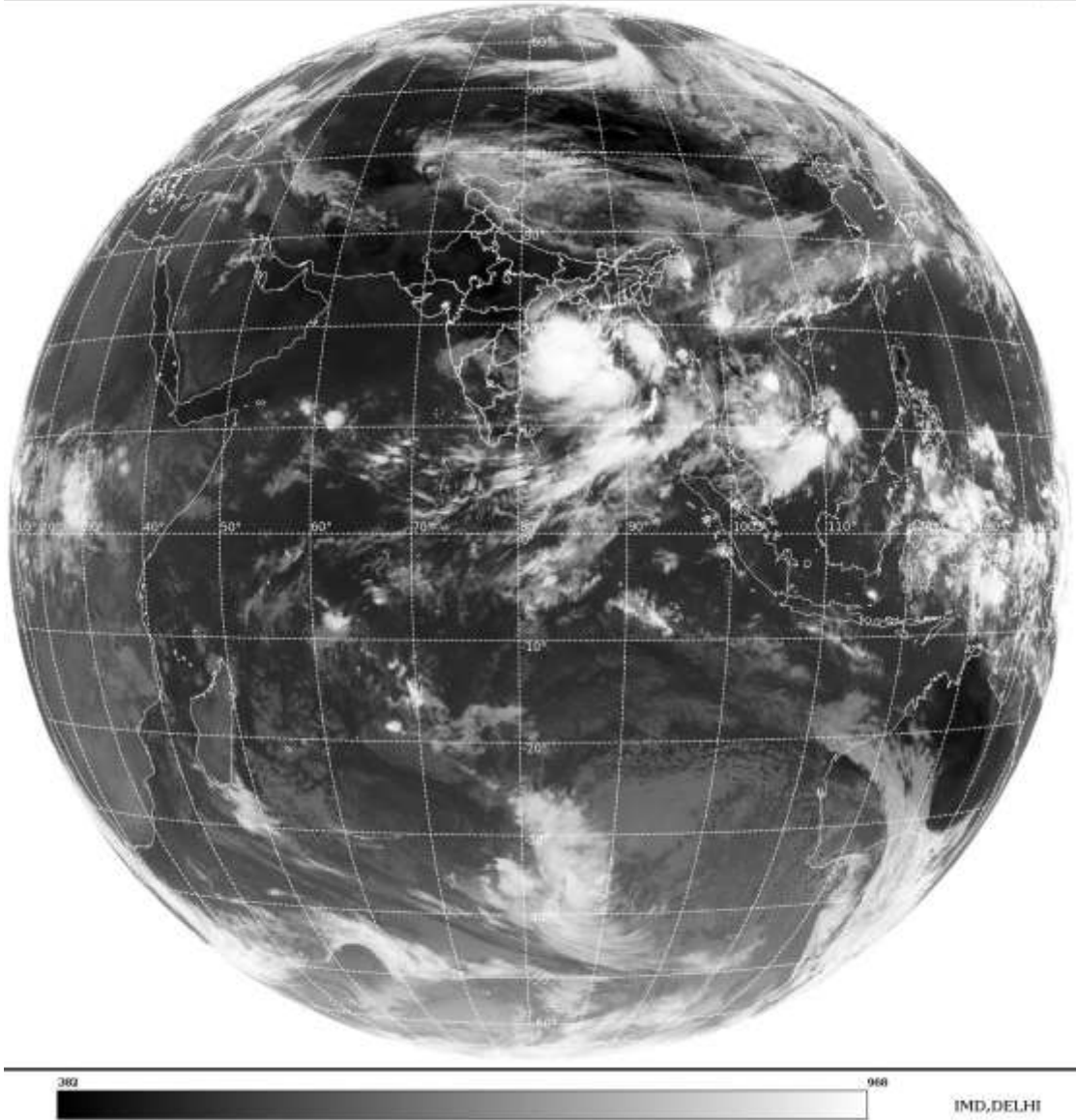
BAY OF BENGAL & ANDAMAN SEA:-

BKN LOW/MED CLOUDS WITH EMBDD INT TO V INT CONV TN OVER BAY NORTH OF LAT 5.0N ALSO OVER ANDAMAN NICOBAR ILS & ANDAMAN SEA (.)

CLOUDS DESCRIPTION OUTSIDE INDIA:-

SAT : INSAT-3D IMG
Thermal Infrared1 Count 10.8 um
L1B FULL DISK

24-05-2021/(0300 to 0327) GMT
24-05-2021/(0830 to 0857) IST



SCT LOW/MED CLOUDS WITH EMBDD MOD TO INT CONV TN OVER SRILANKA MALDIEVES N PAK N TIBET CHINA BHUTAN N MYANMAR THAILAND GULF OF THAILAND CAMBODIA LAOS VIETNAM N SUMATRA STR OF MALACCA MALAY PENINSULA BORNEO S CHINA SEA CELEBES ILS & SEA PHILIPPINES YELLOW SEA E CHINA SEA AND OVER INDIAN OCEAN BET LAT 5.0N TO 7.0S LONG 75.0E TO 95.0E AND BET LAT 5.0S TO 20.0S LONG 60.0E TO 70.0E (.)

TOO 24/0930EF=

NNNN

LEGEND:-

	NORTH	J&K HP PJB HARY DLH UP UTRKND
--	--------------	--

REGION	EAST	BHR JHRKND CHTGH ORS WB SKMNORTH-EAST STATES
	WEST	RAJ MP GUJ MAHA GOA
	SOUTH	TLNGN AP KRNTK KER TN LKSDP ANDAMAN & NICOBAR ILS

CLOUD DISTRIBUTION	ISOL	ISOLATED (LESS THAN 25%)
	SCT	SCATTERED (25 TO 50%)
	BKN	BROKEN (51 TO 75%)
	SLD	SOLID (GREATER THAN 75%)
CLOUDS TOP TEMPERATURE	CTT	CLOUD TOP TEMPERATURE
CONVECTION	WK CONVTN	WEAK CONVECTION (CTT GREATER THAN -25°C)
	MOD CONVTN	MODERATE CONVECTION (CTT BETWEEN -25°C TO -40°C)
	INT CONVTN	INTENSE CONVECTION (CTT BETWEEN -41°C TO -70°C)
	V INT CONVTN	VERY INTENSE CONVECTION (CTT LESS THAN -70°C)
METEOROLOGICAL SUB-DIVISIONS, STATES & UNION TERRITORIES	ARUPR	ARUNACHAL PRADESH
	BHR	BIHAR
	CHTGH	CHHATTISGARH
	COTL AP	COASTAL ANDHRA PRADESH
	COTL KRNTK	COASTAL KARNATAKA
	COTL ORS	COASTAL ORISSA
	GUJ	GUJARAT
	GWB	GANGETIC WEST BENGAL
	HARY	HARYANA
	DLH	DELHI
	HP	HIMACHAL PRADESH
	J&K	JAMMU AND KASHMIR
	JHRKND	JHARKHAND
	KER	KERALA
	KKN	KONKAN
	LKSDP	LAKSHADWEEP
	M MAHA	MADHYA MAHARASHTRA
	MAHA	MAHARASHTRA
	MANI	MANIPUR
	MEGHA	MEGHALAYA
	MIZO	MIZORAM
	MP	MADHYA PRADESH
	MRTHWD	MARATHWADA
	NAGA	NAGALAND
N COTL AP	NORTH COASTAL ANDHRA PRADESH	

	NIK	NORTH INTERIOR KARNATAKA
	ORS	ORISSA
	PJB	PUNJAB
	RAJ	RAJASTHAN
	RYLSM	RAYALASEEMA
	SAU & KUTCH	SAURASHTRA & KUTCH
	SHWB	SUB-HIMALAYAN WEST BENGAL
	SIK	SOUTH INTERIOR KARNATAKA
	SKM	SIKKIM
	TLNGN	TELANGANA
	TN	TAMIL NADU
	TRP	TRIPURA
	UP	UTTAR PRADESH
	UTRKN D	UTTARAKHAND
	VID	VIDHARBHA
	SHWB	SUB HIMALAYAN WEST BENGAL
	GWB	GANGETIC WEST BENGAL
	ARSEA	ARABIAN SEA
	ILS	ISLANDS
MISCELLANEOUS	ASSW	IN ASSOCIATION WITH
	ASSTD	ASSOCIATED
	LLC	LOW LEVEL CIRCULATION
	EMBDD	EMBEDDED
	N/HOOD	NEIGHBOURHOOD
	EXT	EXTREME