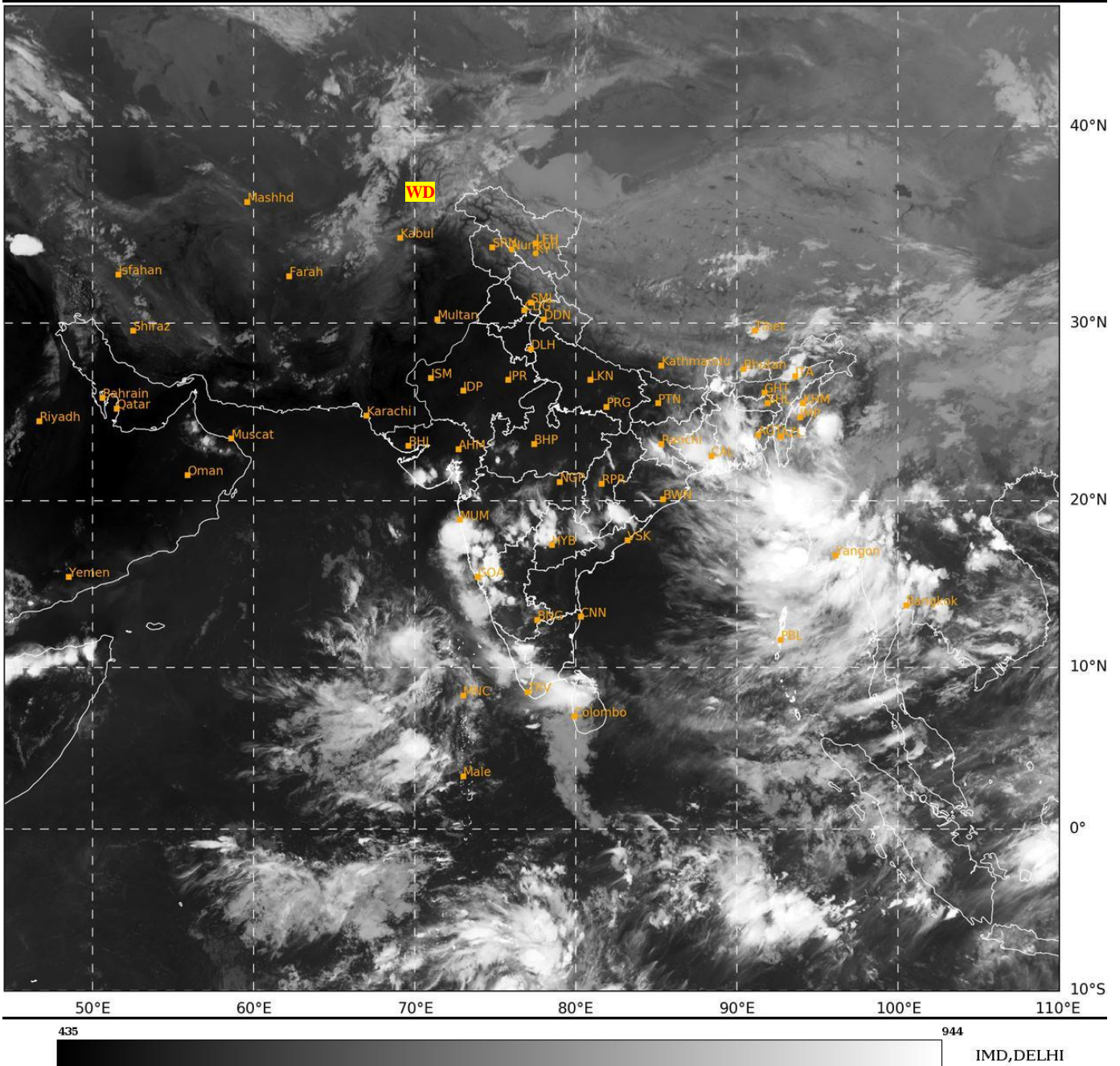




**SATELLITE BULLETIN BASED ON SATELLITE  
IMAGERIES AND PRODUCTS**  
**01.10.2024 TIME 1500 UTC**

SAT : INSAT-3DR IMG  
IMG\_TIR1 10.8 um  
L1C Mercator

01-10-2024/(1445 to 1512) GMT  
01-10-2024/(2015 to 2042) IST



TCIN50 DEMS 011500

SATELLITE BULLETIN BASED ON INSAT-3DR PIC OF 011445 UTC (.)

REGION COVERED BETWEEN LAT 50.0°N TO 35.0°S AND LONG 40.0°E TO 125.0°E (.)

**SALIENT FEATURES:-**

**CONVECTION OVER SOUTH-EAST ARSEA & N/HOOD:-**

INTENSE TO VERY INTENSE CONVTN OVER SE ARSEA & N/HOOD PERSIST (.)

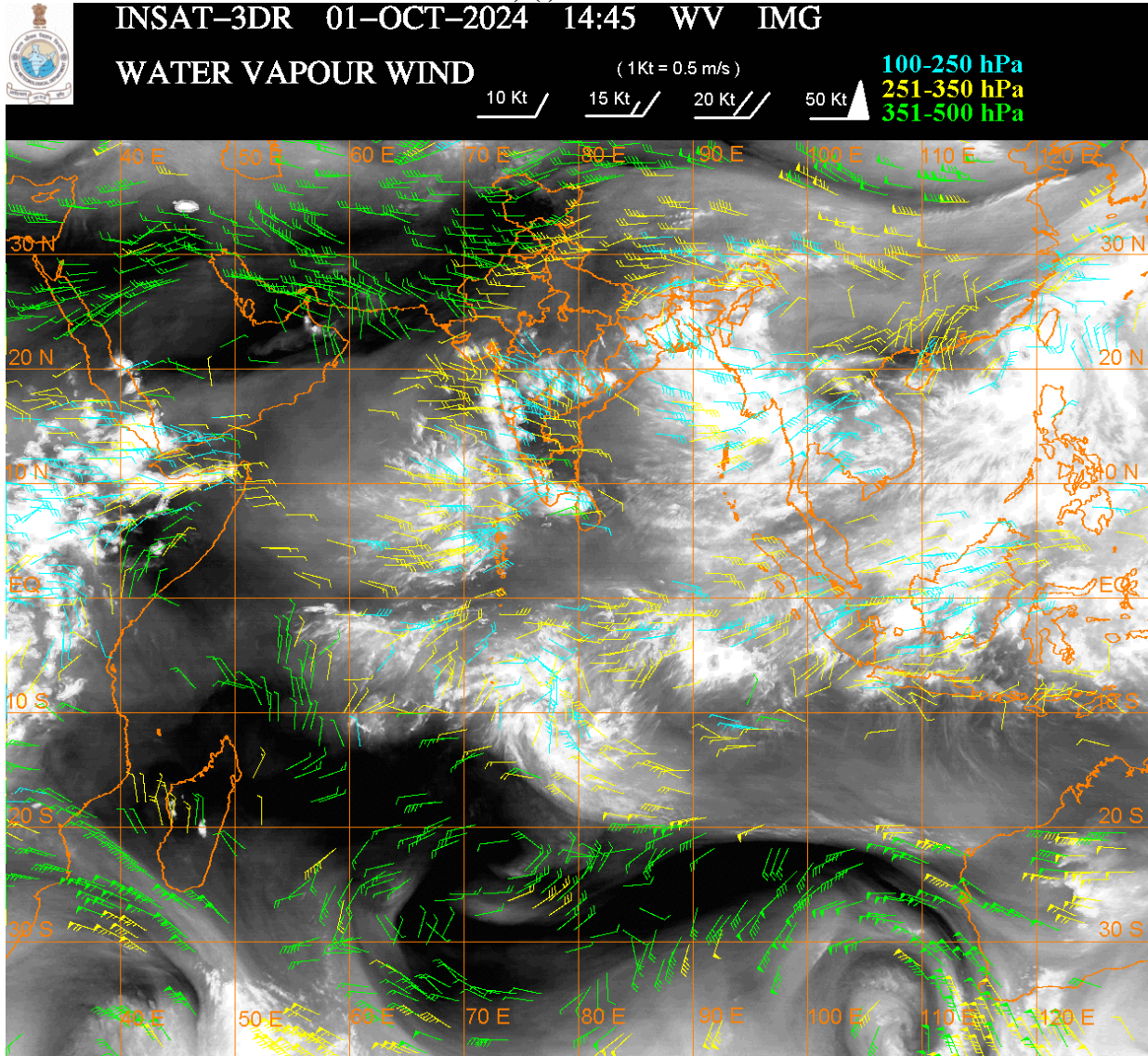
**WESTERN DISTURBANCE (WD):-**

SCT MULTILAYERED CLOUDS OVER E AFGAN ADJ EXT N PAK & N/HOOD IN ASSW **WD** OVER THE AREA (.)

**CONVECTIVE / THUNDERSTORM ACTIVITY:-**

**INTENSE TO VERY INTENSE CONVECTIVE / THUNDERSTORM ACTIVITY OBSERVED SHWB S KKN GOA MRTHWD NIK N TLNGN COTL NW TN (MINIMUM CTT MINUS 70-90 DEG CEL) (.)**

**MODERATE TO INTENSE CONVECTIVE / THUNDERSTORM ACTIVITY OBSERVED OVER GWB ASSAM ARUPR MANI S ORS S TN SW MP S GUJ S JHRKND ANDMAN & NICOBAR ILS LKSDP ILS (MINIMUM CTT MINUS 45-65 DEG CEL) (.)**



**CLOUDS DESCRIPTION WITHIN INDIA:-**

**NORTH:-**

**SCT LOW/MED CLOUDS WITH EMBDD ISOL WK CONV TN OVER LADKAH (.) ISOL LOW/MED CLOUDS OVER J&K HP UTRKND PJB HARY UP (.)**

**EAST:-**

**SCT TO BKN LOW/MED CLOUDS WITH EMBDD INT TO V INT CONV TN OVER S JHRKND S ORS SHWB (.) SCT LOW/MED CLOUDS WITH EMBDD MOD TO INT CONV TN OVER N ORS GWB S CHTGH ASSAM ARUPR MANI AND ISOL WK TO MOD CONV TN OVER SKM REST NE STATES (.) SCT LOW/MED CLOUDS OVER BHR JHRKND N CHTGH (.)**

**WEST:-**

**SCT TO BKN LOW/MED CLOUDS WITH EMBDD INT TO V INT CONV TN OVER S KKN GOA MRTHWD (.) SCT LOW/MED CLOUDS WITH EMBDD MOD TO INT CONV TN OVER SW MP S GUJ VID (.) SCT LOW/MED CLOUDS OVER RAJ REST MP GUJ MAHA (.)**

**SOUTH:-**

**SCT LOW/MED CLOUDS WITH EMBDD INT TO V INT CONV TN OVER N TLNGN NIK NW TN (.) ISOL LOW/MED CLOUDS WITH EMBDD MOD TO INT CONV TN OVER REST KRNTK S TLNGN RYLSM S TN KER ANDAMAN & NICOBAR ILS LKSDP ILS AREA (.) ISOL TO SCT LOW/MED CLOUDS OVER COTL AP (.)**

**ARABIAN SEA:-**

**SCT LOW/MED CLOUDS WITH EMBDD INT TO V INT CONV TN OVER LKSDP ILS AREA SE & EC ARSEA MALDIVES & COMORIN AREA ADJ EQUATORIAL INDIAN OCEAN (MINIMUM CTT**

**MINUS 75-90 DEG CEL) (.) SCT LOW/MED CLOUDS WITH EMBDD ISOL WK TO MOD CONVTN OVER SW ARSEA (.)**

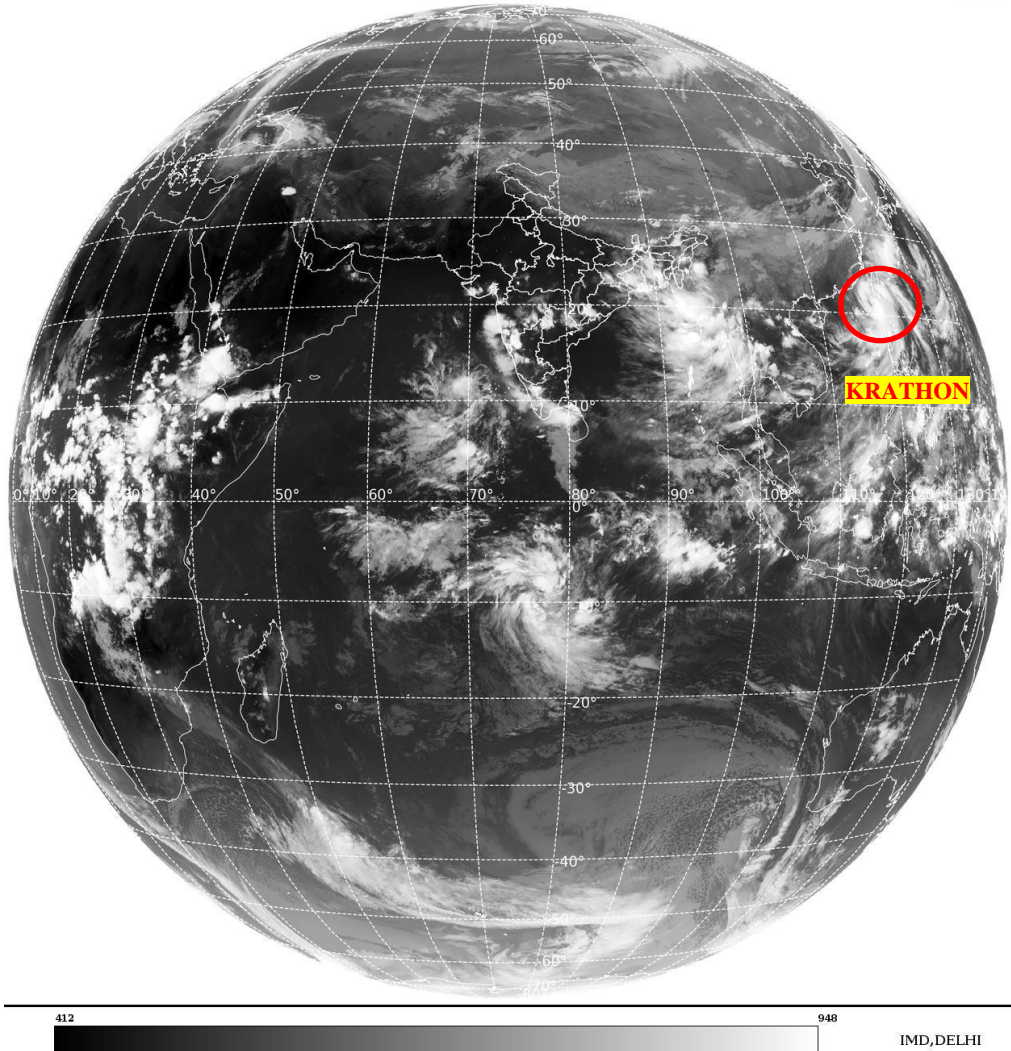
**BAY OF BENGAL & ANDAMAN SEA:-**

**SCT LOW/MED CLOUDS WITH EMBDD INT TO V INT CONVTN OVER NE & EC BAY NORTH ANDAMAN SEA GULF OF MARTABAN TENASSERIM COAST & ARAKAN COAST (MINIMUM CTT MINUS 75-93 DEG CEL) (.) SCT LOW/MED CLOUDS WITH EMBDD ISOL WK TO MOD CONVTN OVER NW & SE BAY SOUTH ANDAMAN SEA (.)**

**CLOUDS DESCRIPTION OUTSIDE INDIA:-**

SAT : INSAT-3DR IMG  
Thermal Infrared1 Count 10.8 um  
L1B FULL DISK

01-10-2024/(1445 to 1512) GMT  
01-10-2024/(2015 to 2042) IST



**VORTEX (KRATHON) OVER EAST CHINA SEA:-**

**VORTEX (KRATHON) OVER EAST CHINA SEA (AREA F05) CENTERED NEAR 21.3N / 119.6E (.) INTENSITY T6.0/7.0 (.) MAXIMUM SUSTAINED WINDS OF 120-140 KTS (.) ASSTD BKN LOW/MED CLOUDS WITH EMBDD INT TO V INT CONVTN OVER AREA BET LAT 13.5N TO 24.0N LONG 113.0E TO 126.5E & NORTH PHILIPPINES TAIWAN (MINIMUM CTT MINUS 93 DEG CEL) (.)**

**SCT LOW/MED CLOUDS WITH EMBDD MOD TO INT CONVTN OVER S SRI LANKA MALDIVES BHUTAN CHINA YELLOW SEA EAST CHINA SEA TAIWAN MYANMAR THAILAND GULF OF THAILAND CAMBODIA LAOS VIETNAM SUMATRA STR OF MALACCA MALAYSIA BORNEO SOUTH CHINA SEA JAVA ILS & SEA CELEBES ILS & SEA PHILIPPINES SULU SEA AND OVER INDIAN OCEAN BET LAT 5.0N TO 20.0S LONG 56.0E TO 108.0E (.)**

**TOO 01/2140 HRS IST=**

**NNNN**

**LEGEND:-**

	<b>NORTH</b>	<b>J&amp;K HP PJB HARY DLH UP UTRKND</b>
--	--------------	--

<b>REGION</b>	<b>EAST</b>	<b>BHR JHRKND CHTGH ORS WB SKM NORTH- EAST STATES</b>
	<b>WEST</b>	<b>RAJ MP GUJ MAHA GOA</b>
	<b>SOUTH</b>	<b>TLNGN AP KRNTK KER TN LKSDP ANDAMAN &amp; NICOBAR ILS</b>
<b>CLOUD DISTRIBUTION</b>	<b>ISOL</b>	<b>ISOLATED (LESS THAN 25%)</b>
	<b>SCT</b>	<b>SCATTERED (25 TO 50%)</b>
	<b>BKN</b>	<b>BROKEN (51 TO 75%)</b>
	<b>SLD</b>	<b>SOLID (GREATER THAN 75%)</b>
<b>CLOUDS TOP TEMPERATURE</b>	<b>CTT</b>	<b>CLOUD TOP TEMPERATURE</b>
<b>CONVECTION</b>	<b>WK CONVTN</b>	<b>WEAK CONVECTION (CTT GREATER THAN -25°C)</b>
	<b>MOD CONVTN</b>	<b>MODERATE CONVECTION (CTT BETWEEN -25°C TO -40°C)</b>
	<b>INT CONVTN</b>	<b>INTENSE CONVECTION (CTT BETWEEN -41°C TO -70°C)</b>
	<b>V INT CONVTN</b>	<b>VERY INTENSE CONVECTION (CTT LESS THAN -70°C)</b>
<b>METEOROLOGICAL SUB- DIVISIONS, STATES &amp; UNION TERRITORIES</b>	<b>ARUPR</b>	<b>ARUNACHAL PRADESH</b>
	<b>BHR</b>	<b>BIHAR</b>
	<b>CHTGH</b>	<b>CHHATTISGARH</b>
	<b>COTL AP</b>	<b>COASTAL ANDHRA PRADESH</b>
	<b>COTL KRNTK</b>	<b>COASTAL KARNATAKA</b>
	<b>COTL ORS</b>	<b>COASTAL ORISSA</b>
	<b>GUJ</b>	<b>GUJARAT</b>
	<b>GWB</b>	<b>GANGETIC WEST BENGAL</b>
	<b>HARY</b>	<b>HARYANA</b>
	<b>DLH</b>	<b>DELHI</b>
	<b>HP</b>	<b>HIMACHAL PRADESH</b>
	<b>J&amp;K</b>	<b>JAMMU AND KASHMIR</b>
	<b>JHRKND</b>	<b>JHARKHAND</b>
	<b>KER</b>	<b>KERALA</b>
	<b>KKN</b>	<b>KONKAN</b>
	<b>LKSDP</b>	<b>LAKSHADWEEP</b>
	<b>M MAHA</b>	<b>MADHYA MAHARASHTRA</b>
	<b>MAHA</b>	<b>MAHARASHTRA</b>
	<b>MANI</b>	<b>MANIPUR</b>
	<b>MEGHA</b>	<b>MEGHALAYA</b>
	<b>MIZO</b>	<b>MIZORAM</b>
	<b>MP</b>	<b>MADHYA PRADESH</b>
		<b>MRTHWD</b>
<b>NAGA</b>		<b>NAGALAND</b>
<b>N COTL AP</b>		<b>NORTH COASTAL ANDHRA PRADESH</b>
<b>NIK</b>		<b>NORTH INTERIOR KARNATAKA</b>
<b>ORS</b>		<b>ORISSA</b>
<b>PJB</b>		<b>PUNJAB</b>
<b>RAJ</b>		<b>RAJASTHAN</b>

	<b>RYLSM</b>	<b>RAYALASEEMA</b>
	<b>SAU &amp; KUTCH</b>	<b>SAURASHTRA &amp; KUTCH</b>
	<b>SHWB</b>	<b>SUB-HIMALAYAN WEST BENGAL</b>
	<b>SIK</b>	<b>SOUTH INTERIOR KARNATAKA</b>
	<b>SKM</b>	<b>SIKKIM</b>
	<b>TLNGN</b>	<b>TELANGANA</b>
	<b>TN</b>	<b>TAMIL NADU</b>
	<b>TRP</b>	<b>TRIPURA</b>
	<b>UP</b>	<b>UTTAR PRADESH</b>
	<b>UTRKND</b>	<b>UTTARAKHAND</b>
	<b>VID</b>	<b>VIDHARBHA</b>
	<b>SHWB</b>	<b>SUB HIMALAYAN WEST BENGAL</b>
	<b>GWB</b>	<b>GANGETIC WEST BENGAL</b>
	<b>ARSEA</b>	<b>ARABIAN SEA</b>
	<b>ILS</b>	<b>ISLANDS</b>
<b>MISCELLANEOUS</b>	<b>ASSW</b>	<b>IN ASSOCIATION WITH</b>
	<b>ASSTD</b>	<b>ASSOCIATED</b>
	<b>LLC</b>	<b>LOW LEVEL CIRCULATION</b>
	<b>EMBDD</b>	<b>EMBEDDED</b>
	<b>N/HOOD</b>	<b>NEIGHBOURHOOD</b>
	<b>EXT</b>	<b>EXTREME</b>