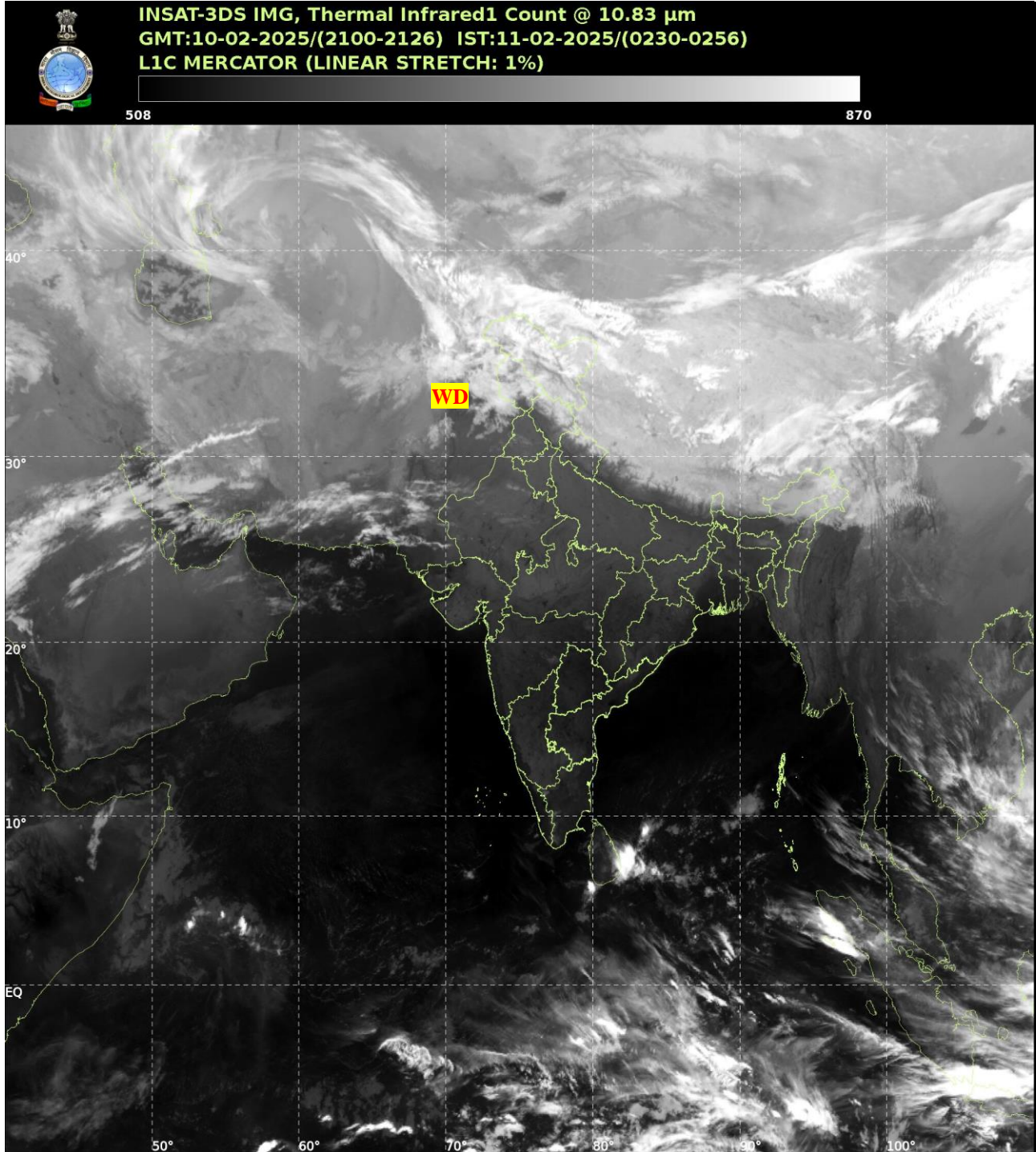




भारत मौसम विज्ञान विभाग  
पृथ्वी विज्ञान मंत्रालय  
India Meteorological Department  
Ministry of Earth Sciences



**SATELLITE BULLETIN BASED ON SATELLITE  
IMAGERIES AND PRODUCTS**  
**10.02.2025 TIME 2100 UTC**



TCIN50 DEMS 102100

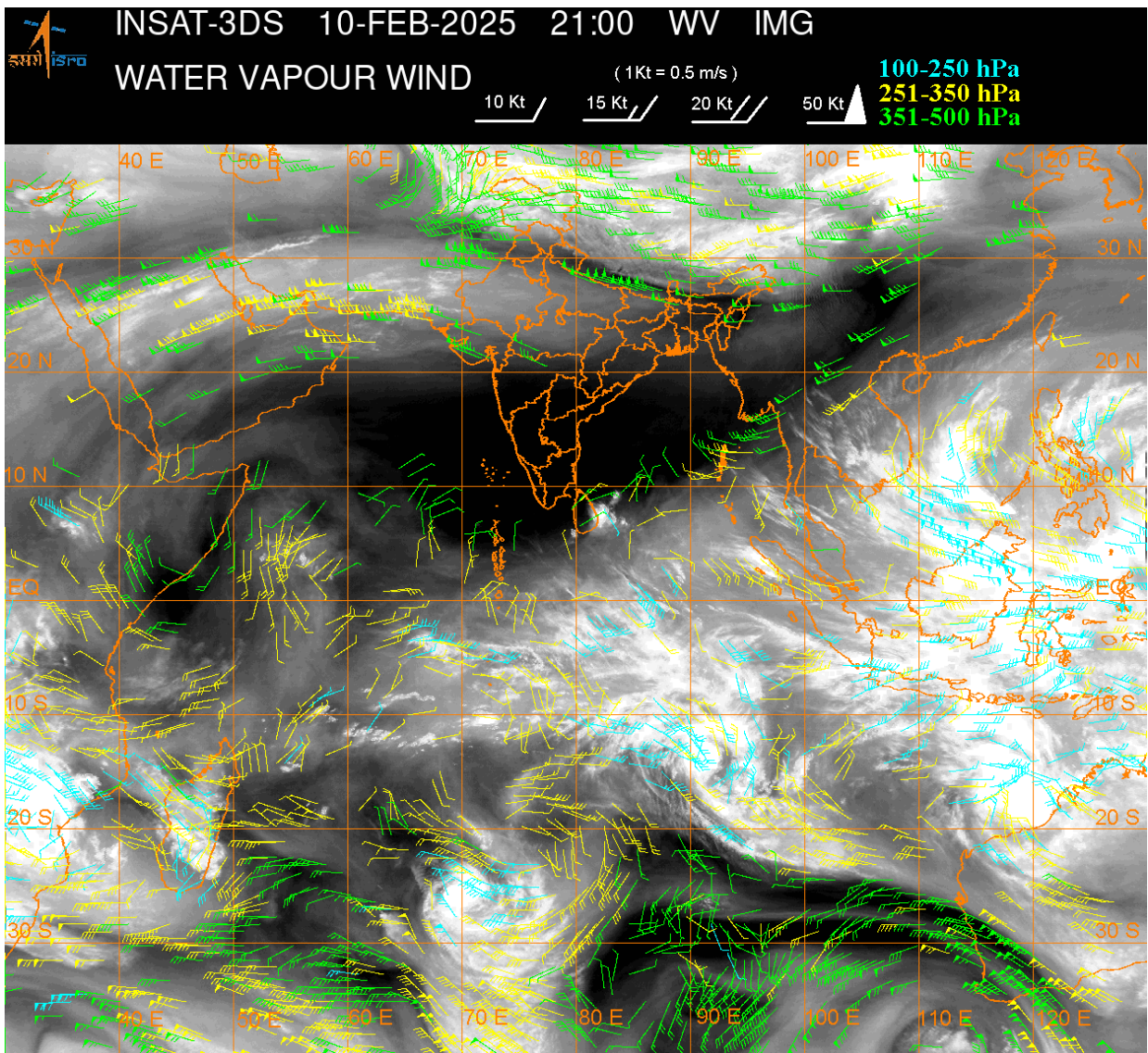
SATELLITE BULLETIN BASED ON INSAT-3DS PIC OF 102100 UTC (.)

REGION COVERED BETWEEN LAT 50.0°N TO 35.0°S AND LONG 40.0°E TO 125.0°E (.)

**SALIENT FEATURES:-**

**WESTERN DISTURBANCE:-**

SCT MULTILAYERED CLOUDS OVER AFGAN PAK J&K LADAKH HP UTRKND PJB HARY RAJ  
UP NEPAL TIBET ADJ CHINA IN ASSW **WD** OVER THE AREA (.)



**CLOUDS DESCRIPTION WITHIN INDIA:-**

**NORTH:-**

SCT LOW/MED CLOUDS WITH EMBDD MOD TO INT CONVTN OVER LADAKH J&K HP UTRKND AND WK TO MOD CONVTN OVER PJB N UP (.) ISOL TO SCT LOW/MED CLOUDS OVER HARY (.)

**EAST:-**

SCT LOW/MED CLOUDS WITH EMBDD ISOL WK CONVTN OVER SKM ARUPR E ASSAM MEGHA (.) ISOL TO SCT LOW/MED CLOUDS OVER SHWB REST NE STATES (.)

**WEST:-**

SCT LOW/MED CLOUDS WITH EMBDD ISOL WK TO MOD CONVTN OVER RAJ (.) ISOL TO SCT LOW/MED CLOUDS OVER N GUJ MAHA MP (.)

**SOUTH:-**

SCT LOW/MED CLOUDS WITH EMBDD ISOL WK CONVTN OVER TN (.) ISOL TO SCT LOW/MED CLOUDS OVER KER KRNTK LKSDP ILS AREA ANDAMAN & NICOBAR ILS (.)

**ARABIAN SEA:-**

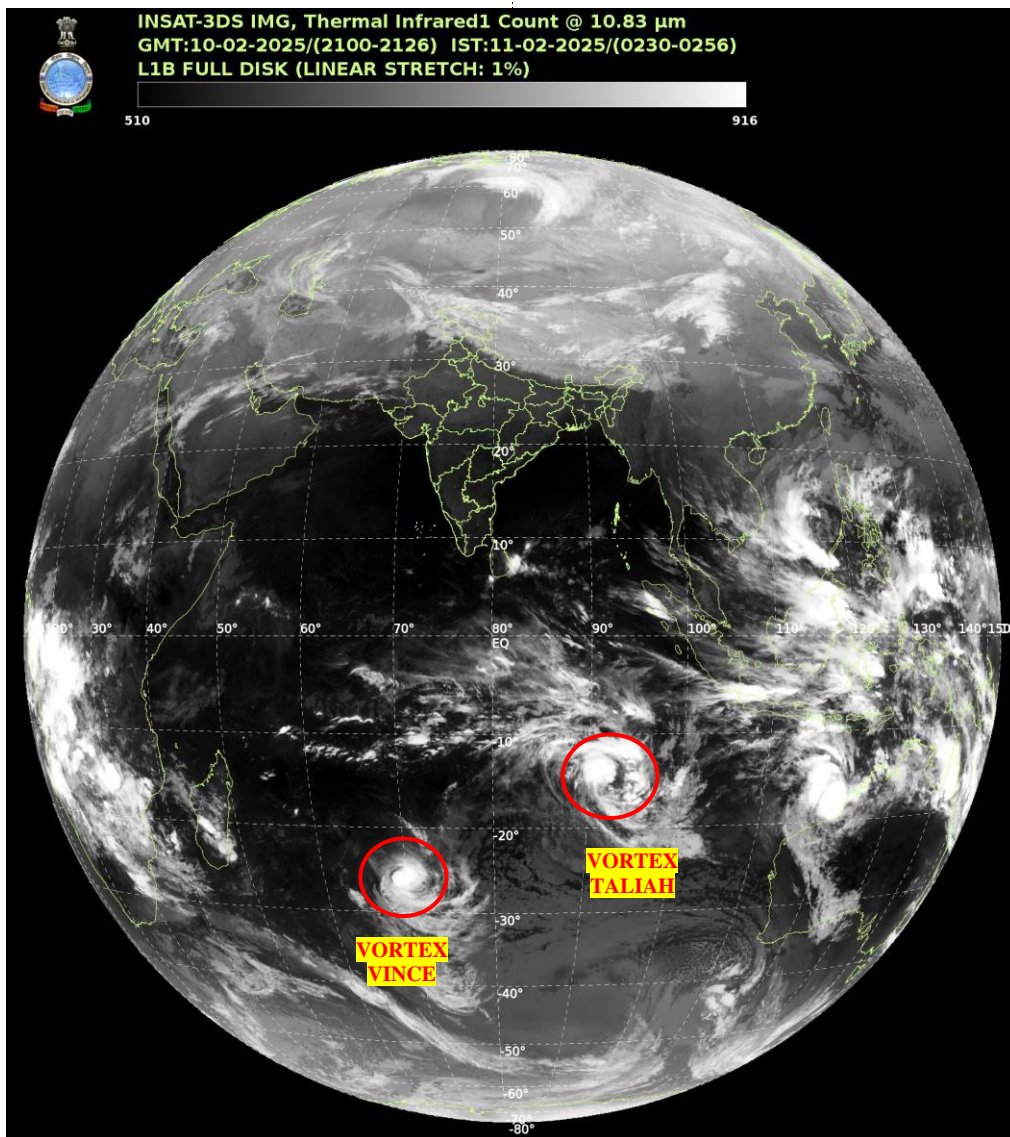
SCT LOW/MED CLOUDS WITH EMBDD MOD TO INT CONVTN OVER SW ARSEA (.) SCT LOW/MED CLOUDS WITH EMBDD ISOL WK TO MOD CONVTN OVER SE ARSEA LKSDP ILS & COMORIN AREA (.)

**BAY OF BENGAL & ANDAMAN SEA:-**

SCT LOW/MED CLOUDS WITH EMBDD ISOL MOD TO INT CONVTN OVER SOUTH BAY & ANDAMAN SEA (.)



**CLOUDS DESCRIPTION OUTSIDE INDIA:-**



**VORTEX (VINCE) OVER SOUTH INDIAN OCEAN:-**

**VORTEX (VINCE) OVER SOUTH INDIAN OCEAN (AREA D70 ADJ D60) CENTERED NEAR 25.5S / 68.9E (.) INTENSITY T4.0/5.0 (.) MAXIMUM SUSTAINED WINDS 90-119 KTS (.) ASSTD SCT TO BKN LOW/MED CLOUDS WITH EMBDD INT TO V INT CONVTN OVER AREA BET LAT 21.0S TO 27.0S LONG 64.0E TO 71.0E (.)**

**VORTEX (TALIAH) OVER SOUTH INDIAN OCEAN:-**

**VORTEX (TALIAH) OVER SOUTH INDIAN OCEAN (AREA H05) CENTERED NEAR 14.6S / 92.4E (.) INTENSITY T3.5/3.5 (.) MAXIMUM SUSTAINED WINDS 64-89 KTS (.) ASSTD SCT TO BKN LOW/MED CLOUDS WITH EMBDD INT TO V INT CONVTN OVER AREA BET LAT 6.0S TO 17.0S LONG 87.0E TO 97.0E (.)**

**SCT LOW/MED CLOUDS WITH EMBDD MOD TO INT CONVTN OVER PAK TIBET CHINA YELLOW SEA EAST CHINA SEA SOUTH VIETNAM GULF OF THAILAND SUMATRA STR OF MALACCA MALAYSIA BORNEO SOUTH CHINA SEA JAVA ILS & SEA CELEBES ILS & SEA PHILIPPINES SULU SEA MADAGASCAR MOZAMBIQUE CHANNEL AND OVER INDIAN OCEAN BET LAT 5.0N TO 35.0S LONG 40.0E TO 125.0E (.)**

**TOO 11/0505EF=**

**NNNN**

**LEGEND:-**

|  |                     |  |                   |
|--|---------------------|--|-------------------|
| <b>REGION</b>  | <b>NORTH</b>        | <b>J&amp;K HP PJB HARY DLH UP UTRKND</b>                         |                   |
|  | <b>EAST</b>         | <b>BHR JHRKND CHTGH ORS WB<br/>SKM NORTH- EAST STATES</b>        |                   |
|  | <b>WEST</b>         | <b>RAJ MP GUJ MAHA GOA</b>                                       |                   |
|  | <b>SOUTH</b>        | <b>TLNGN AP KRNTK KER TN LKSDP<br/>ANDAMAN &amp; NICOBAR ILS</b> |                   |
| <b>CLOUD DISTRIBUTION</b>  | <b>ISOL</b>         | <b>ISOLATED (LESS THAN 25%)</b>                                  |                   |
|  | <b>SCT</b>          | <b>SCATTERED (25 TO 50%)</b>                                     |                   |
|  | <b>BKN</b>          | <b>BROKEN (51 TO 75%)</b>  |                   |
|  | <b>SLD</b>          | <b>SOLID (GREATER THAN 75%)</b>                                  |                   |
| <b>CLOUDS TOP TEMPERATURE</b>  | <b>CTT</b>          | <b>CLOUD TOP TEMPERATURE</b>                                     |                   |
| <b>CONVECTION</b>  | <b>WK CONVTN</b>    | <b>WEAK CONVECTION<br/>(CTT GREATER THAN -25°C)</b>              |                   |
|  | <b>MOD CONVTN</b>   | <b>MODERATE CONVECTION<br/>(CTT BETWEEN -25°C TO -40°C)</b>      |                   |
|  | <b>INT CONVTN</b>   | <b>INTENSE CONVECTION<br/>(CTT BETWEEN -41°C TO -70°C)</b>       |                   |
|  | <b>V INT CONVTN</b> | <b>VERY INTENSE CONVECTION<br/>(CTT LESS THAN -70°C)</b>         |                   |
| <b>METEOROLOGICAL SUB- DIVISIONS, STATES &amp; UNION TERRITORIES</b> | <b>ARUPR</b>        | <b>ARUNACHAL PRADESH</b>   |                   |
|  | <b>BHR</b>          | <b>BIHAR</b>   |                   |
|  | <b>CHTGH</b>        | <b>CHHATTISGARH</b>  |                   |
|  | <b>COTL AP</b>      | <b>COASTAL ANDHRA PRADESH</b>                                    |                   |
|  | <b>COTL KRNTK</b>   | <b>COASTAL KARNATAKA</b>   |                   |
|  | <b>COTL ORS</b>     | <b>COASTAL ORISSA</b>  |                   |
|  | <b>GUJ</b>          | <b>GUJARAT</b>   |                   |
|  | <b>GWB</b>          | <b>GANGETIC WEST BENGAL</b>                                      |                   |
|  | <b>HARY</b>         | <b>HARYANA</b>   |                   |
|  | <b>DLH</b>          | <b>DELHI</b>   |                   |
|  | <b>HP</b>           | <b>HIMACHAL PRADESH</b>  |                   |
|  | <b>J&amp;K</b>      | <b>JAMMU AND KASHMIR</b>   |                   |
|  | <b>JHRKND</b>       | <b>JHARKHAND</b>   |                   |
|  | <b>KER</b>          | <b>KERALA</b>  |                   |
|  | <b>KKN</b>          | <b>KONKAN</b>  |                   |
|  | <b>LKSDP</b>        | <b>LAKSHADWEEP</b>   |                   |
|  | <b>M MAHA</b>       | <b>MADHYA MAHARASHTRA</b>  |                   |
|  | <b>MAHA</b>         | <b>MAHARASHTRA</b>   |                   |
|  | <b>MANI</b>         | <b>MANIPUR</b>   |                   |
|  | <b>MEGHA</b>        | <b>MEGHALAYA</b>   |                   |
|  | <b>MIZO</b>         | <b>MIZORAM</b>   |                   |
|  | <b>MP</b>           | <b>MADHYA PRADESH</b>  |                   |
|  |                     | <b>MRTHWD</b>  | <b>MARATHWADA</b> |
|  |                     | <b>NAGA</b>  | <b>NAGALAND</b>   |
| <b>N COTL AP</b>   |                     | <b>NORTH COASTAL ANDHRA PRADESH</b>                              |                   |
| <b>NIK</b>   |                     | <b>NORTH INTERIOR KARNATAKA</b>                                  |                   |
| <b>ORS</b>   |                     | <b>ORISSA</b>  |                   |

|                      |                        |                                  |
|----------------------|------------------------|----------------------------------|
|                      | <b>PJB</b>             | <b>PUNJAB</b>                    |
|                      | <b>RAJ</b>             | <b>RAJASTHAN</b>                 |
|                      | <b>RYLSM</b>           | <b>RAYALASEEMA</b>               |
|                      | <b>SAU &amp; KUTCH</b> | <b>SAURASHTRA &amp; KUTCH</b>    |
|                      | <b>SHWB</b>            | <b>SUB-HIMALAYAN WEST BENGAL</b> |
|                      | <b>SIK</b>             | <b>SOUTH INTERIOR KARNATAKA</b>  |
|                      | <b>SKM</b>             | <b>SIKKIM</b>                    |
|                      | <b>TLNGN</b>           | <b>TELANGANA</b>                 |
|                      | <b>TN</b>              | <b>TAMIL NADU</b>                |
|                      | <b>TRP</b>             | <b>TRIPURA</b>                   |
|                      | <b>UP</b>              | <b>UTTAR PRADESH</b>             |
|                      | <b>UTRKND</b>          | <b>UTTARAKHAND</b>               |
|                      | <b>VID</b>             | <b>VIDHARBHA</b>                 |
|                      | <b>SHWB</b>            | <b>SUB HIMALAYAN WEST BENGAL</b> |
|                      | <b>GWB</b>             | <b>GANGETIC WEST BENGAL</b>      |
|                      | <b>ARSEA</b>           | <b>ARABIAN SEA</b>               |
|                      | <b>ILS</b>             | <b>ISLANDS</b>                   |
| <b>MISCELLANEOUS</b> | <b>ASSW</b>            | <b>IN ASSOCIATION WITH</b>       |
|                      | <b>ASSTD</b>           | <b>ASSOCIATED</b>                |
|                      | <b>LLC</b>             | <b>LOW LEVEL CIRCULATION</b>     |
|                      | <b>EMBDD</b>           | <b>EMBEDDED</b>                  |
|                      | <b>N/HOOD</b>          | <b>NEIGHBOURHOOD</b>             |
|                      | <b>EXT</b>             | <b>EXTREME</b>                   |