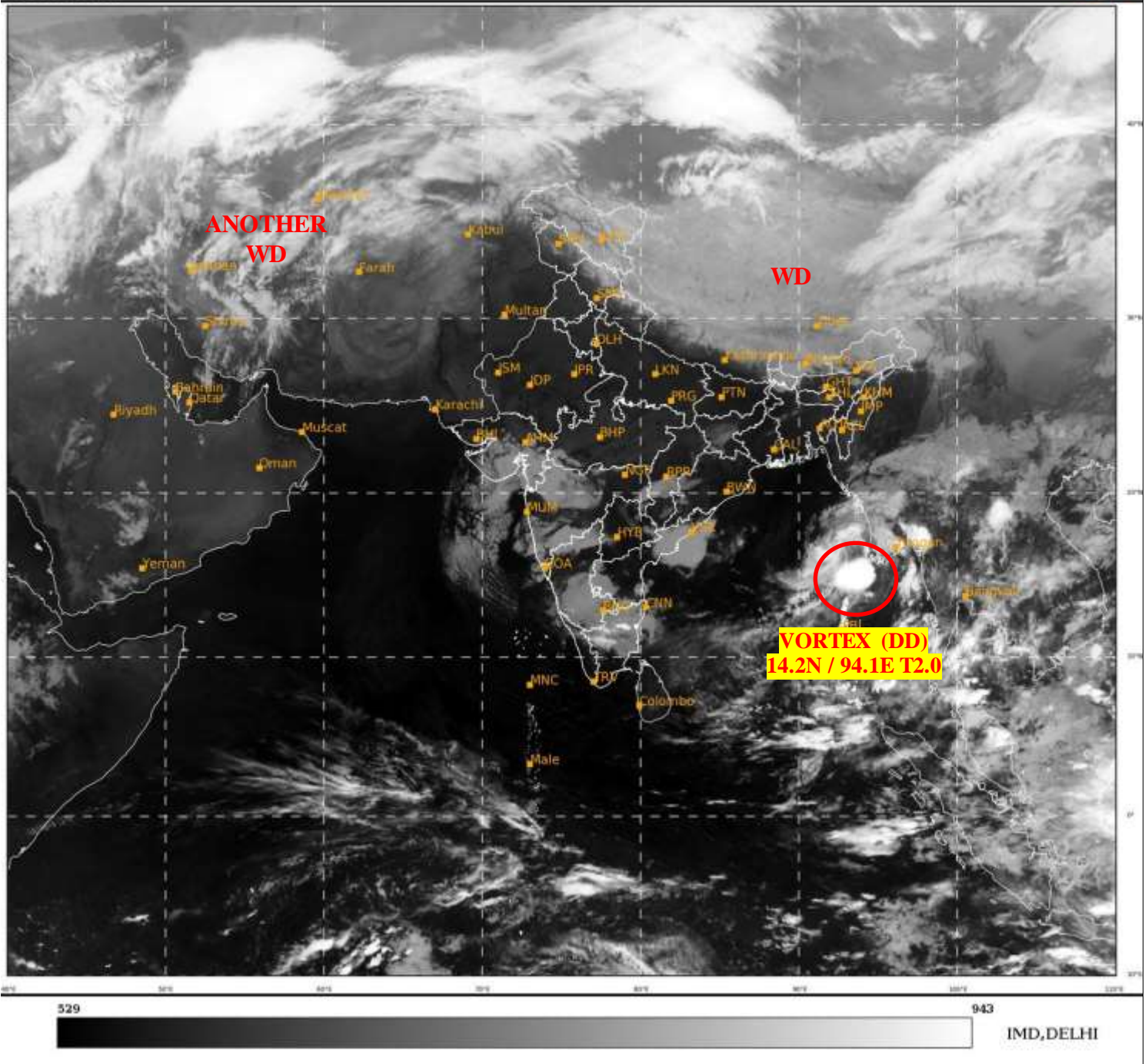




**SATELLITE BULLETIN BASED ON SATELLITE
IMAGERIES AND PRODUCTS**
21.03.2022 TIME 2100 UTC

SAT : INSAT-3D IMG
IMG_TIR1 10.8 um
LIC Mercator

21-03-2022/(2100 to 2126) GMT
22-03-2022/(0230 to 0256) IST



TCIN50 DEMS 212100

SATELLITE BULLETIN BASED ON INSAT-3D PIC OF 212100 UTC (.)

REGION COVERED BETWEEN LAT 50.0°N TO 30.0°S AND LONG 40.0°E TO 125.0°E (.)

SALIENT FEATURES:-

VORTEX (DEEP DEPRESSION) OVER NORTH ANDAMAN SEA ADJ EAST-CENTRAL BAY:-

VORTEX (DD) OVER NORTH ANDAMAN SEA ADJ EC BAY CENTERED **WITHIN HALF A DEGREE OF 14.2N / 94.1E** (.) INTENSITY **T2.0/2.0** (.) ASSTD BKN LOW/MED CLOUDS WITH EMBDD INT TO V INT CONVTN OVER NORTH ANDAMAN SEA ADJ EC BAY BET LAT 14.0N TO 16.0N LONG 92.0E TO 95.0E (.) MINIMUM CTT MINUS **93 DEG C** (.)

GCOM-W1 AMSR2 37 GHZ MICROWAVE IMAGERY AT 19:50 UTC EXPOSES LOW LEVEL CIRCULATION CENTER NEAR 14.2N / 94.1E WITH INTENSE TO VERY INTENSE CONVECTION LIES TO THE NORTH OF THE SYSTEM CENTER (.)

WESTERN DISTURBANCE (WD):-

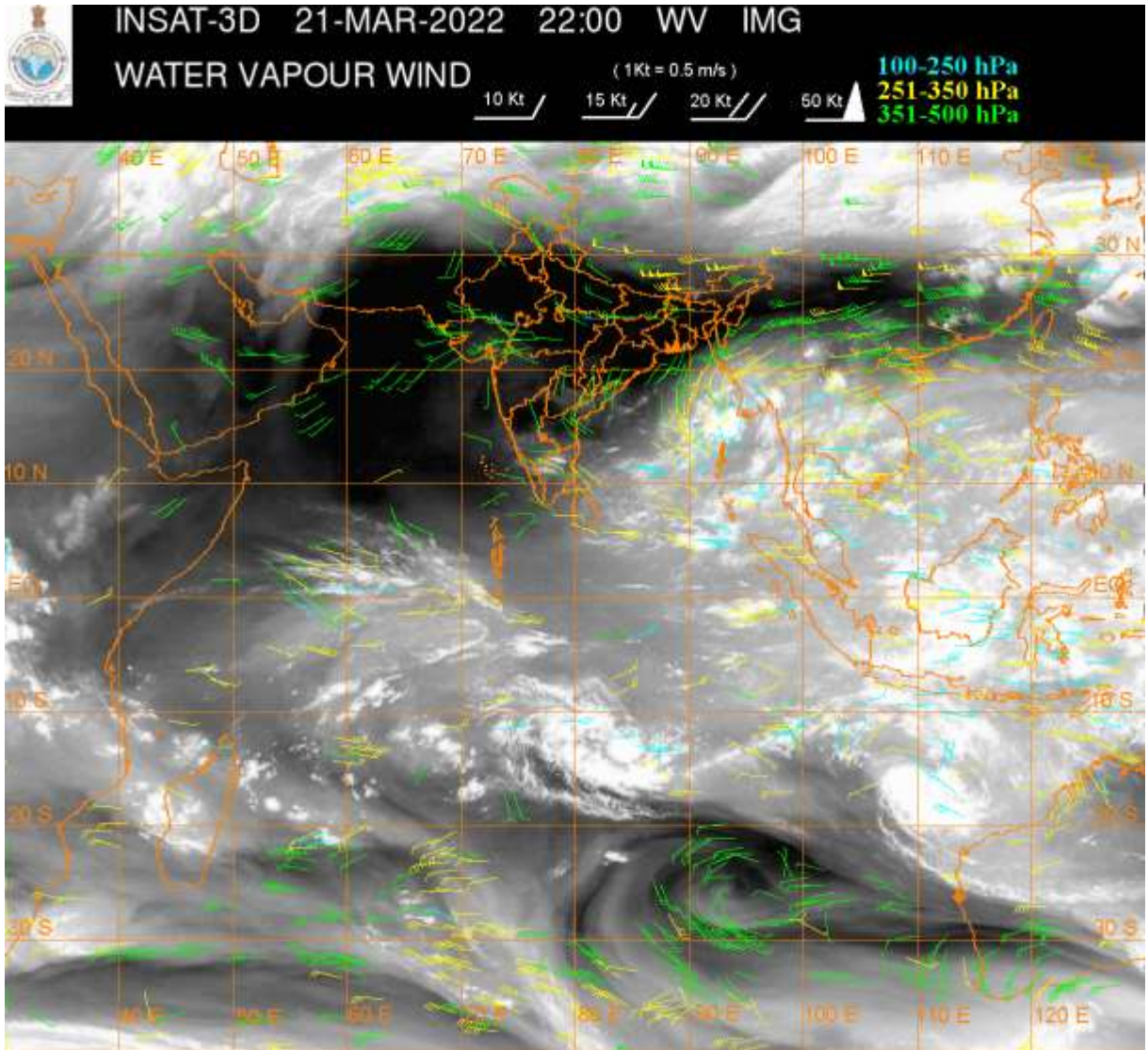
SCT MULTILAYERED CLOUDS OVER E TIBET ADJ CHINA IN ASSW **WD** OVER THE AREA (.)

SCT MULTILAYERED CLOUDS OVER CASPIAN SEA IRAN AFGAN AND N/HOOD IN ASSW **ANOTHER WD** OVER THE AREA (.)

PRECIPITATION NOWCASTING:-

(BASED ON SCOPE NOWCASTING TOOL AT 2100 UTC IN A LEAD TIME OF 180 MINUTES):-

RAINFALL UPTO **10-12 MM** OVER SIK N TN (.)



CLOUDS DESCRIPTION WITHIN INDIA:-

NORTH:-

SCT LOW/MED CLOUDS WITH EMBDD ISOL WK TO MOD CONVTN OVER LADAKH J&K N HP N UTRKND (.) ISOL LOW/MED CLOUDS OVER EXT NE UP (.)

EAST:-

SCT LOW/MED CLOUDS WITH EMBDD WK CONVTN OVER JHRKND S CHTGH W ORS N SHWB SKM ARUPR ASSAM N NAGA & NW BD (.) ISOL TO SCT LOW/MED CLOUDS OVER N BHR E ORS E GWB MEGHA S NAGA N MANI (.)

WEST:-

SCT LOW/MED CLOUDS WITH EMBDD WK CONVTN OVER SW MP GUJ MAHA GOA (.)

SOUTH:-

SCT LOW/MED CLOUDS WITH EMBDD MOD TO INT CONVTN OVER N TN NICOBAR ILS (.) SCT LOW/MED CLOUDS WITH EMBDD WK CONVTN OVER KRNTK TLNGN RYLSM COTL AP N KER ANDAMAN ILS (.) SCT LOW/MED CLOUDS OVER S KER S TN LKSDP (.)

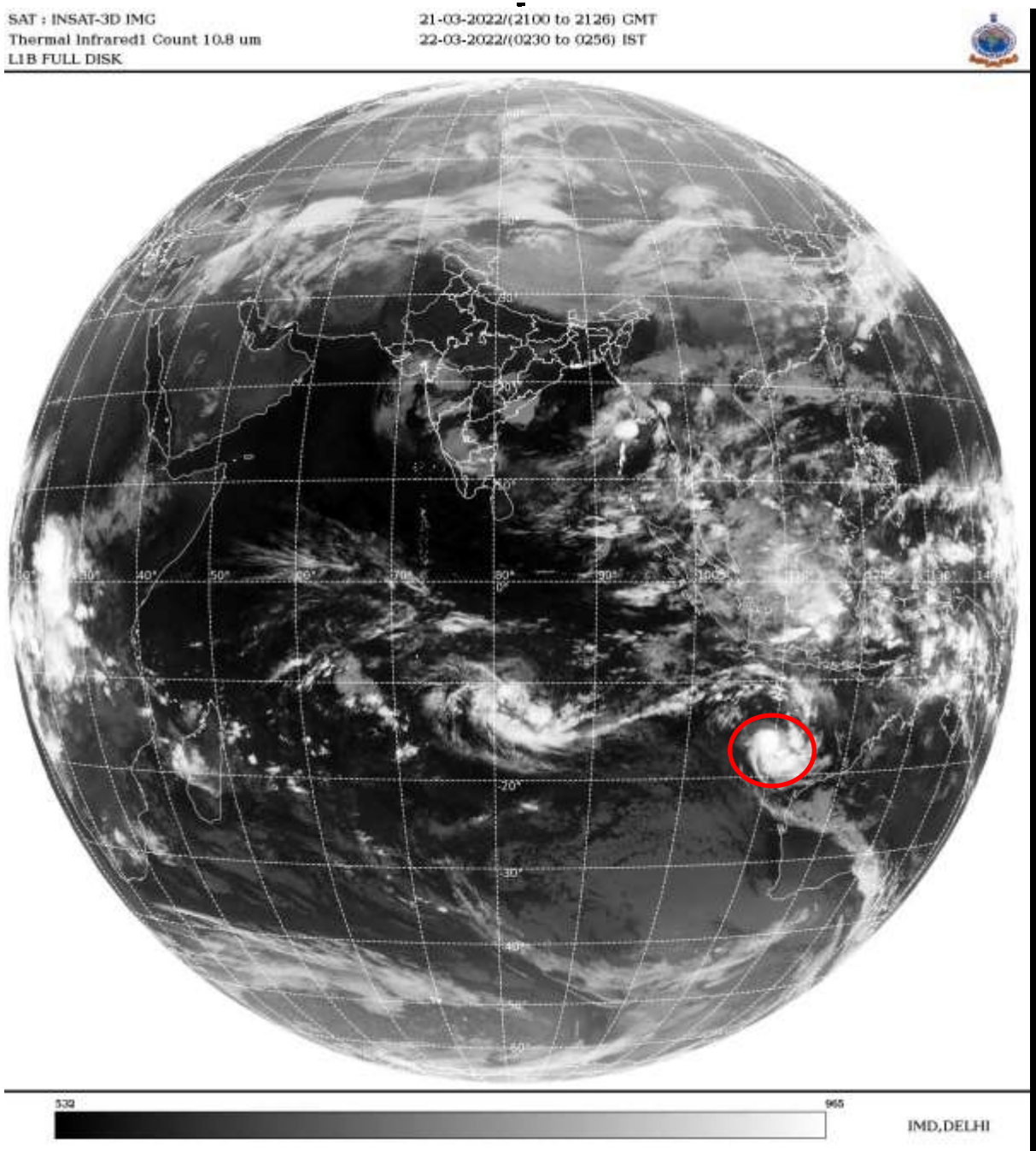
ARABIAN SEA:-

SCT LOW/MED CLOUDS WITH EMBDD ISOL WK CONVTN OVER EAST ARSEA GULF OF KUTCH AND GULF OF CAMBAY (.) SCT LOW/MED CLOUDS OVER SW ARSEA (.)

BAY OF BENGAL & ANDAMAN SEA:-

SCT TO BKN LOW/MED CLOUDS WITH EMBDD INT TO V INT CONVTN OVER EC BAY AND ANDAMAN SEA (MINIMUM CTT MINUS 93 DEG C) (.) SCT LOW/MED CLOUDS WITH EMBDD MOD TO INT CONVTN OVER SE BAY AND WK TO MOD CONVTN OVER SOUTH PARTS OF NE BAY WC & SW BAY (.)

CLOUDS DESCRIPTION OUTSIDE INDIA:



VORTEX (CHARLOTTE) OVER SOUTH INDIAN OCEAN:-

VORTEX (**CHARLOTTE**) OVER SOUTH INDIAN OCEAN CENTERED NEAR **16.4S / 109.6E** (.) INTENSITY **T5.0/5.0** (.) ASSTD BKN LOW/MED CLOUDS WITH EMBDD INT TO V INT CONVTN OVER AREA BET LAT 15.0S TO 20.0S LONG 108.0E TO 113.0E (.)

SCT LOW/MED CLOUDS WITH EMBDD MOD TO INT CONVTN OVER S MALDIVES TIBET CHINA YELLOW SEA E CHINA SEA TAIWAN MYANMAR THAILAND GULF OF THAILAND CAMBODIA LAOS VIETNAM GULF OF TONKIN HAINAN SUMATRA STR OF MALACCA MALAYSIA BORNEO S CHINA SEA JAVA ILS & SEA CELEBES ILS & SEA PHILIPPINES SULU SEA MADAGASCAR MOZAMBIQUE CHANNEL AND OVER INDIAN OCEAN BET LAT 5.0N TO 20.0S LONG 50.0E TO 118.0E (.)

TOO 22/0430 HRS IST=

NNNN

LEGEND:-

REGION	NORTH	J&K HP PJB HARY DLH UP UTRKND
	EAST	BHR JHRKND CHTGH OR WB SKM NORTH- EAST STATES
	WEST	RAJ MP GUJ MAHA GOA
	SOUTH	TLNGN AP KRNTK KER TN LKSDP ANDAMAN & NICOBAR ILS

CLOUD DISTRIBUTION	ISOL	ISOLATED (LESS THAN 25%)	
	SCT	SCATTERED (25 TO 50%)	
	BKN	BROKEN (51 TO 75%)	
	SLD	SOLID (GREATER THAN 75%)	
CLOUDS TOP TEMPERATURE	CTT	CLOUD TOP TEMPERATURE	
CONVECTION	WK CONVIN	WEAK CONVECTION (CTT GREATER THAN -25°C)	
	MOD CONVIN	MODERATE CONVECTION (CTT BETWEEN -25°C TO -40°C)	
	INT CONVIN	INTENSE CONVECTION (CTT BETWEEN -41°C TO -70°C)	
	V INT CONVIN	VERY INTENSE CONVECTION (CTT LESS THAN -70°C)	
METEOROLOGICAL SUB-DIVISIONS, STATES & UNION TERRITORIES	ARUPR	ARUNACHAL PRADESH	
	BHR	BIHAR	
	CHTGH	CHHATTISGARH	
	COTL AP	COASTAL ANDHRA PRADESH	
	COTL KRNTK	COASTAL KARNATAKA	
	COTL ORS	COASTAL ORISSA	
	GUJ	GUJARAT	
	GWB	GANGETIC WEST BENGAL	
	HARY	HARYANA	
	DLH	DELHI	
	HP	HIMACHAL PRADESH	
	J&K	JAMMU AND KASHMIR	
	JHRKND	JHARKHAND	
	KER	KERALA	
	KKN	KONKAN	
	LKSDP	LAKSHADWEEP	
	M MAHA	MADHYA MAHARASHTRA	
	MAHA	MAHARASHTRA	
	MANI	MANIPUR	
	MEGHA	MEGHALAYA	
	MIZO	MIZORAM	
	MP	MADHYA PRADESH	
		MRTHWD	MARATHWADA
		NAGA	NAGALAND

	N COTL AP	NORTH COASTAL ANDHRA PRADESH
	NIK	NORTH INTERIOR KARNATAKA
	ORS	ORISSA
	PJB	PUNJAB
	RAJ	RAJASTHAN
	RYLSM	RAYALASEEMA
	SAU & KUTCH	SAURASHTRA & KUTCH
	SHWB	SUB-HIMALAYAN WEST BENGAL
	SIK	SOUTH INTERIOR KARNATAKA
	SKM	SIKKIM
	TLNGN	TELANGANA
	TN	TAMIL NADU
	TRP	TRIPURA
	UP	UTTAR PRADESH
	UTRKN	UTTARAKHAND
	VID	VIDHARBHA
	SHWB	SUB HIMALAYAN WEST BENGAL
	GWB	GANGETIC WEST BENGAL
	ARSEA	ARABIAN SEA
	ILS	ISLANDS
MISCELLANEOUS	ASSW	IN ASSOCIATION WITH
	ASSTD	ASSOCIATED
	LLC	LOW LEVEL CIRCULATION
	EMBDD	EMBEDDED
	N/HOOD	NEIGHBOURHOOD
	EXT	EXTREME