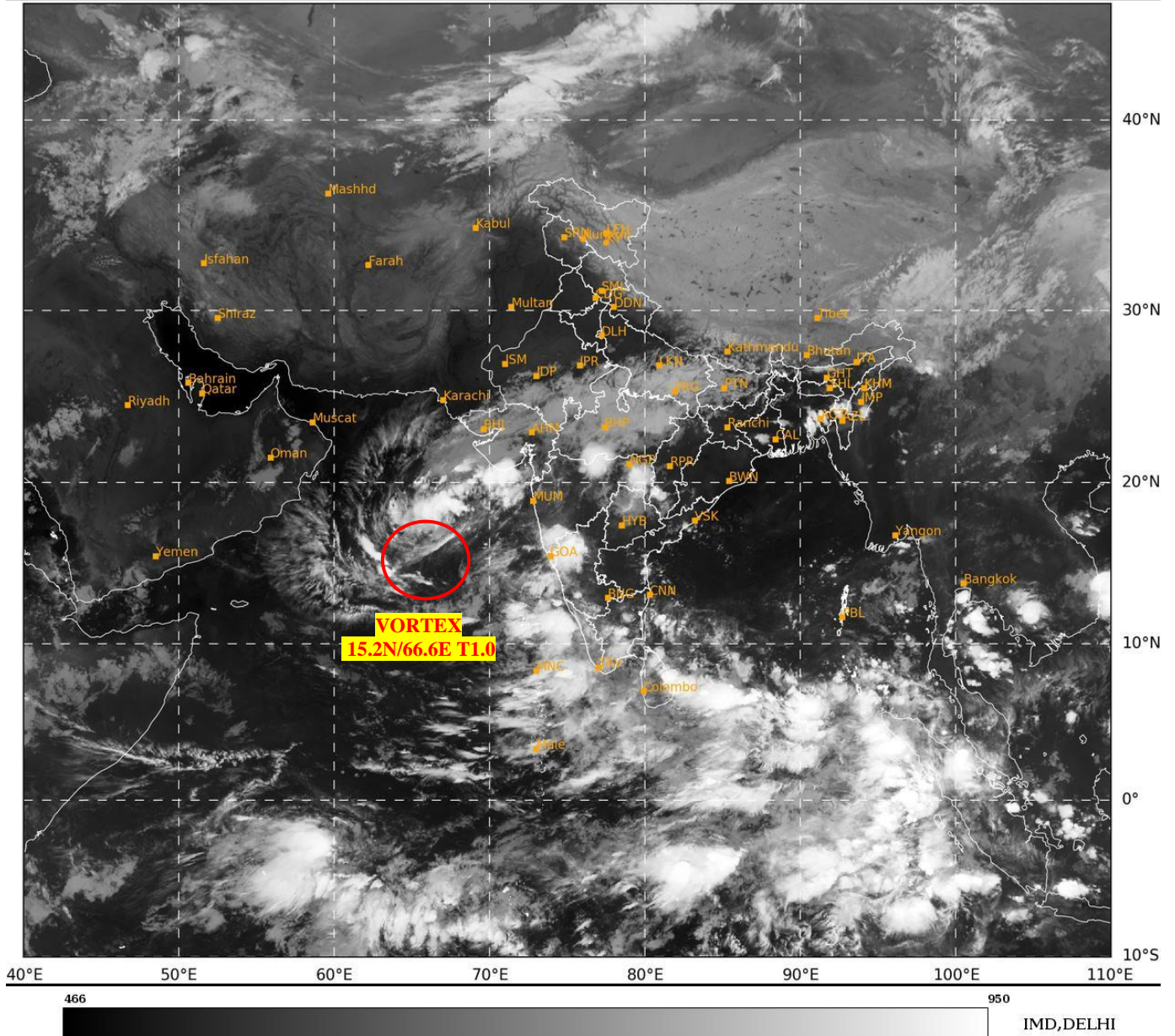




**SATELLITE BULLETIN BASED ON SATELLITE
IMAGERIES AND PRODUCTS**
12.10.2024 TIME 0000 UTC

SAT : INSAT-3DR IMG
IMG_TIR1 10.8 um
LIC Mercator

12-10-2024/(0015 to 0042) GMT
12-10-2024/(0545 to 0612) IST



TCIN50 DEMS 120000

SATELLITE BULLETIN BASED ON INSAT-3DR PIC OF 120015 UTC (.)

REGION COVERED BETWEEN LAT 50.0°N TO 35.0°S AND LONG 40.0°E TO 125.0°E (.)

SALIENT FEATURES:-

VORTEX OVER EAST-CENTRAL ARABIAN SEA :-

VORTEX OVER EC ARSEA CENTERED WITHIN HALF A DEGREE OF **15.2N/66.6E** (.) INTENSITY **T1.0** (.) ASSTD SCT TO BKN LOW/MED CLOUDS WITH EMBDD INT TO V INT CONVTN OVER AREA BET LAT 12.0N TO 21.0N EAST OF LONG 61.0E (.) MINIMUM **CTT MINUS 90 DEG CEL** (.)

CONVECTIVE / THUNDERSTORM ACTIVITY:-

INTENSE TO VERY INTENSE CONVECTIVE / THUNDERSTORM ACTIVITY OBSERVED OVER S GUJ NIK TN LKSDP ILS AREA (MINIMUM **CTT MINUS 70-90 DEG CEL**) (.)

MODERATE TO INTENSE CONVECTIVE / THUNDERSTORM ACTIVITY OBSERVED OVER S CHTGH S GWB S ASSAM MANI BD S MP KKN VID GOA REST KRNTK KER COTL AP (MINIMUM **CTT MINUS 50-70 DEG CEL**) (.)



INSAT-3DR 12-OCT-2024 00:15 WV IMG

WATER VAPOUR WIND

(1Kt = 0.5 m/s)

10 Kt

15 Kt

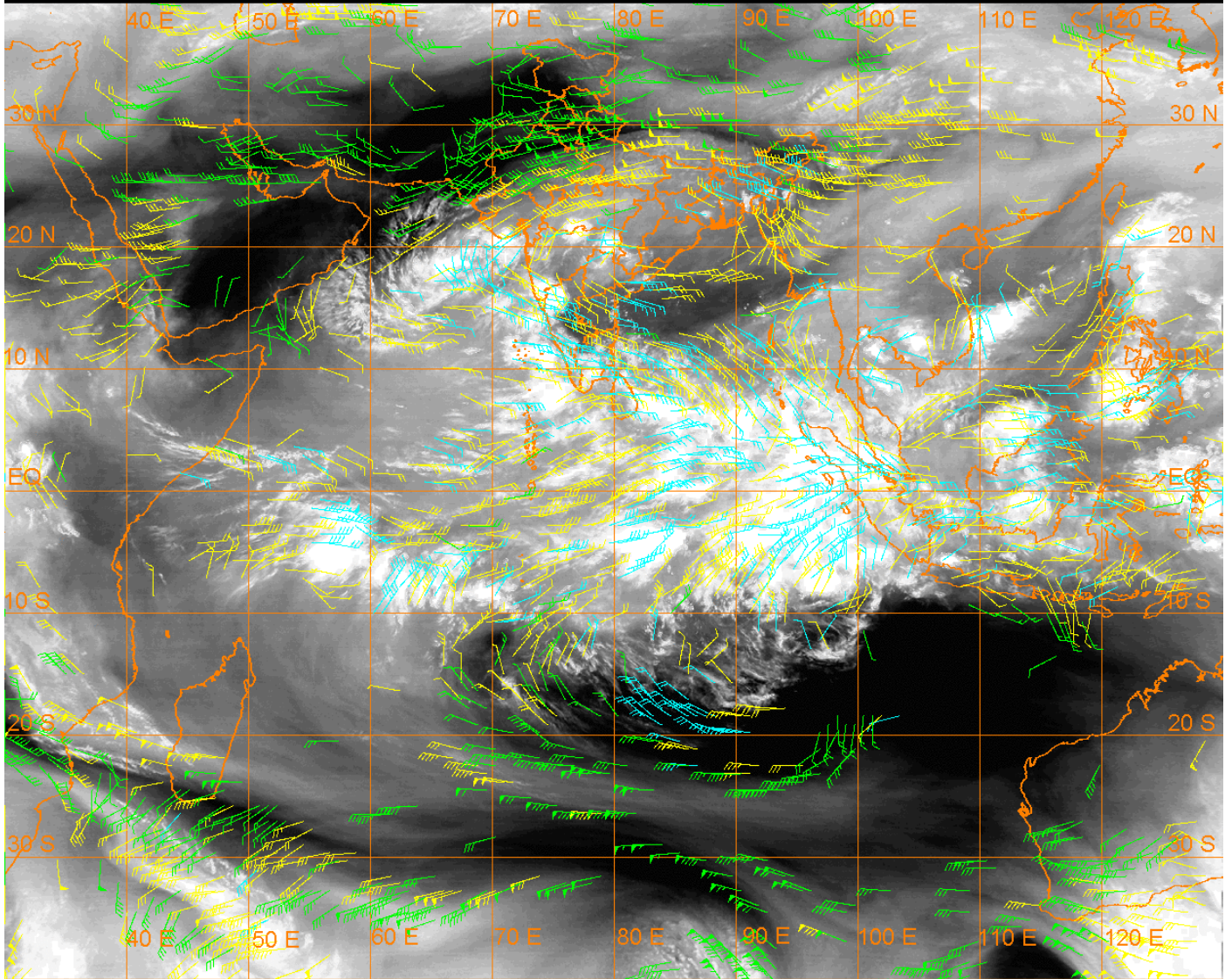
20 Kt

50 Kt

100-250 hPa

251-350 hPa

351-500 hPa



CLOUDS DESCRIPTION WITHIN INDIA:-

NORTH:-

SCT LOW/MED CLOUDS WITH EMBDD WK TO MOD CONVTN OVER LADAKH UP (.) SCT LOW/MED CLOUDS OVER J&K HP UTRKND (.)

EAST:-

SCT LOW/MED CLOUDS WITH EMBDD MOD TO INT CONVTN OVER S CHTGH S GWB S ASSAM MANI BD AND WK TO MOD CONVTN OVER BHR N JHRKND N CHTGH N GWB S ORS SHWB SKM REST NE STATES (.) SCT LOW/MED CLOUDS OVER S JHRKND N ORS (.)

WEST:-

SCT LOW/MED CLOUDS WITH EMBDD INT TO V INT CONVTN OVER S GUJ (.) SCT LOW/MED CLOUDS WITH EMBDD MOD TO INT CONVTN OVER S MP KKN VID GOA AND WK TO MOD CONVTN OVER RAJ N MP REST GUJ REST MAHA (.)

SOUTH:-

SCT TO BKN LOW/MED CLOUDS WITH EMBDD INT TO V INT CONVTN OVER NIK TN LKSDP ILS AREA (.) SCT LOW/MED CLOUDS WITH EMBDD MOD TO INT CONVTN OVER REST KRNTK KER COTL AP AND WK TO MOD CONVTN OVER TLNGN RYLSM ANDAMAN & NICOBAR ILS (.)

ARABIAN SEA:-

SCT TO BKN LOW/MED CLOUDS WITH EMBDD INT TO V INT CONVTN OVER CENTRAL ADJ NE ARSEA GULF OF CAMBAY LKSDP ILS AREA MALDIVES & COMORIN AREA (MINIMUM **CTT MINUS 70-90 DEG CEL**) (.) SCT LOW/MED CLOUDS WITH EMBDD MOD TO INT CONVTN OVER SOUTH ARSEA AND WK TO MOD CONVTN OVER REST N ARSEA (.)

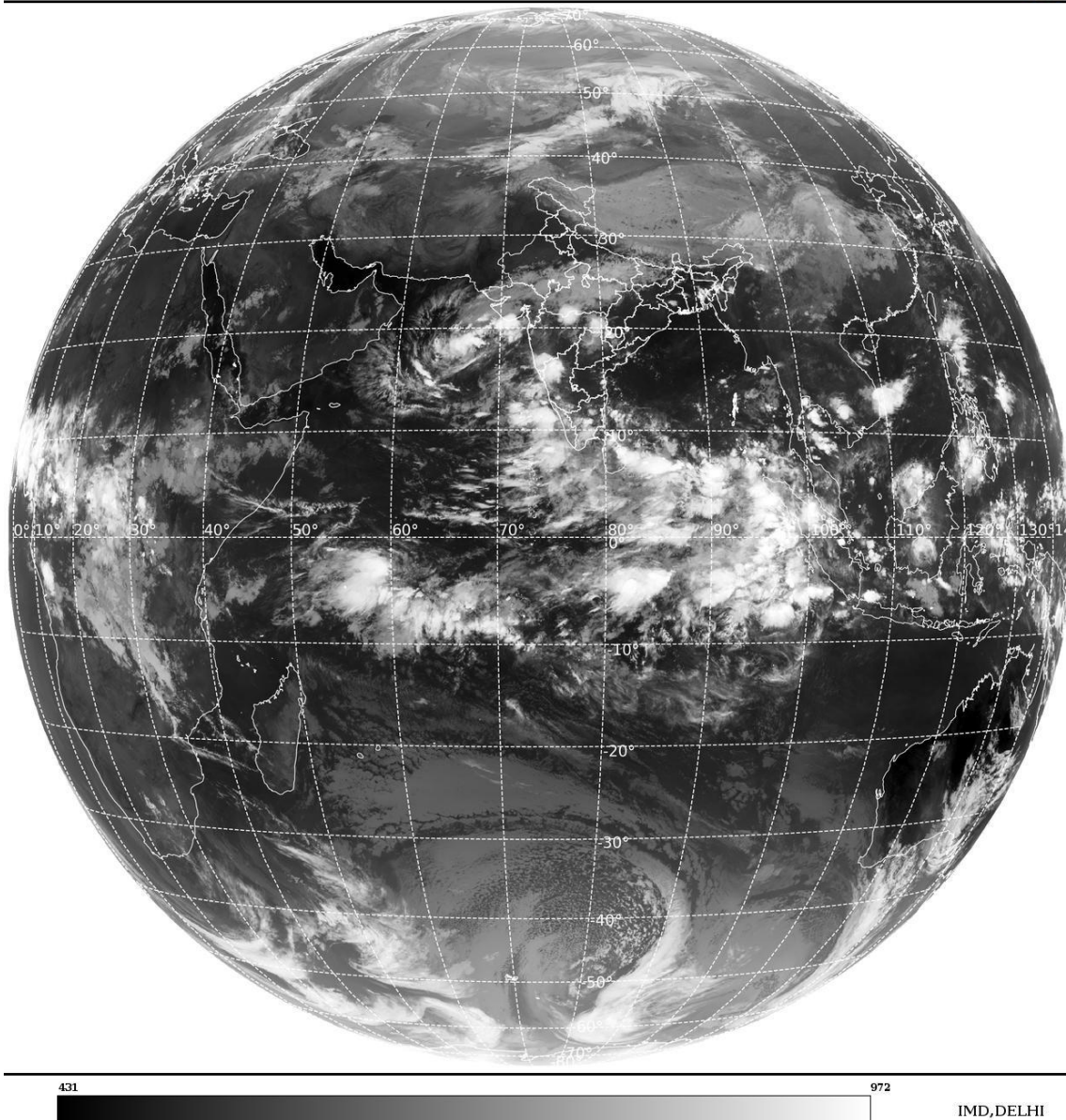
BAY OF BENGAL & ANDAMAN SEA:-

SCT TO BKN LOW/MED CLOUDS WITH EMBDD INT TO V INT CONVTN OVER SOUTH BAY SOUTH OF LAT 10.0N AND ADJ EQUATORIAL INDIAN OCEAN & S ANDAMAN SEA (MINIMUM CTT MINUS 80-93 DEG CEL) (.) SCT LOW/MED CLOUDS WITH EMBDD MOD TO INT CONVTN OVER EC BAY & N ANDAMAN SEA (.)

CLOUDS DESCRIPTION OUTSIDE INDIA:-

SAT : INSAT-3DR IMG
Thermal Infrared1 Count 10.8 um
L1B FULL DISK

12-10-2024/(0015 to 0042) GMT
12-10-2024/(0545 to 0612) IST



SCT LOW/MED CLOUDS WITH EMBDD MOD TO INT CONVTN OVER SRI LANKA PALK STR GULF OF MANNAR MALDIVES MYANMAR THAILAND GULF OF THAILAND CAMBODIA LAOS VIETNAM SUMATRA STR OF MALACCA MALAYSIA BORNEO SOUTH CHINA SEA JAVA ILS & SEA CELEBES ILS & SEA PHILIPPINES AND OVER INDIAN OCEAN BET LAT 5.0N TO 15.0S LONG 40.0E TO 100.0E (.)

TOO 12/0700 HRS IST=

NNNN

LEGEND:-

REGION	NORTH	J&K HP PJB HARY DLH UP UTRKND
	EAST	BHR JHRKND CHTGH ORS WB SKM NORTH- EAST STATES
	WEST	RAJ MP GUJ MAHA GOA
	SOUTH	TLNGN AP KRNTK KER TN LKSDP

		ANDAMAN & NICOBAR ILS
CLOUD DISTRIBUTION	ISOL	ISOLATED (LESS THAN 25%)
	SCT	SCATTERED (25 TO 50%)
	BKN	BROKEN (51 TO 75%)
	SLD	SOLID (GREATER THAN 75%)
CLOUDS TOP TEMPERATURE	CTT	CLOUD TOP TEMPERATURE
CONVECTION	WK CONVTN	WEAK CONVECTION (CTT GREATER THAN -25°C)
	MOD CONVTN	MODERATE CONVECTION (CTT BETWEEN -25°C TO -40°C)
	INT CONVTN	INTENSE CONVECTION (CTT BETWEEN -41°C TO -70°C)
	V INT CONVTN	VERY INTENSE CONVECTION (CTT LESS THAN -70°C)
METEOROLOGICAL SUB- DIVISIONS, STATES & UNION TERRITORIES	ARUPR	ARUNACHAL PRADESH
	BHR	BIHAR
	CHTGH	CHHATTISGARH
	COTL AP	COASTAL ANDHRA PRADESH
	COTL KRNTK	COASTAL KARNATAKA
	COTL ORS	COASTAL ORISSA
	GUJ	GUJARAT
	GWB	GANGETIC WEST BENGAL
	HARY	HARYANA
	DLH	DELHI
	HP	HIMACHAL PRADESH
	J&K	JAMMU AND KASHMIR
	JHRKND	JHARKHAND
	KER	KERALA
	KKN	KONKAN
	LKSDP	LAKSHADWEEP
	M MAHA	MADHYA MAHARASHTRA
	MAHA	MAHARASHTRA
	MANI	MANIPUR
	MEGHA	MEGHALAYA
	MIZO	MIZORAM
	MP	MADHYA PRADESH
	MRTHWD	MARATHWADA
	NAGA	NAGALAND
	N COTL AP	NORTH COASTAL ANDHRA PRADESH
	NIK	NORTH INTERIOR KARNATAKA
	ORS	ORISSA
	PJB	PUNJAB
	RAJ	RAJASTHAN
	RYLSM	RAYALASEEMA
	SAU & KUTCH	SAURASHTRA & KUTCH
	SHWB	SUB-HIMALAYAN WEST BENGAL

	SIK	SOUTH INTERIOR KARNATAKA
	SKM	SIKKIM
	TLNGN	TELANGANA
	TN	TAMIL NADU
	TRP	TRIPURA
	UP	UTTAR PRADESH
	UTRKND	UTTARAKHAND
	VID	VIDHARBHA
	SHWB	SUB HIMALAYAN WEST BENGAL
	GWB	GANGETIC WEST BENGAL
	ARSEA	ARABIAN SEA
	ILS	ISLANDS
MISCELLANEOUS	ASSW	IN ASSOCIATION WITH
	ASSTD	ASSOCIATED
	LLC	LOW LEVEL CIRCULATION
	EMBDD	EMBEDDED
	N/HOOD	NEIGHBOURHOOD
	EXT	EXTREME