

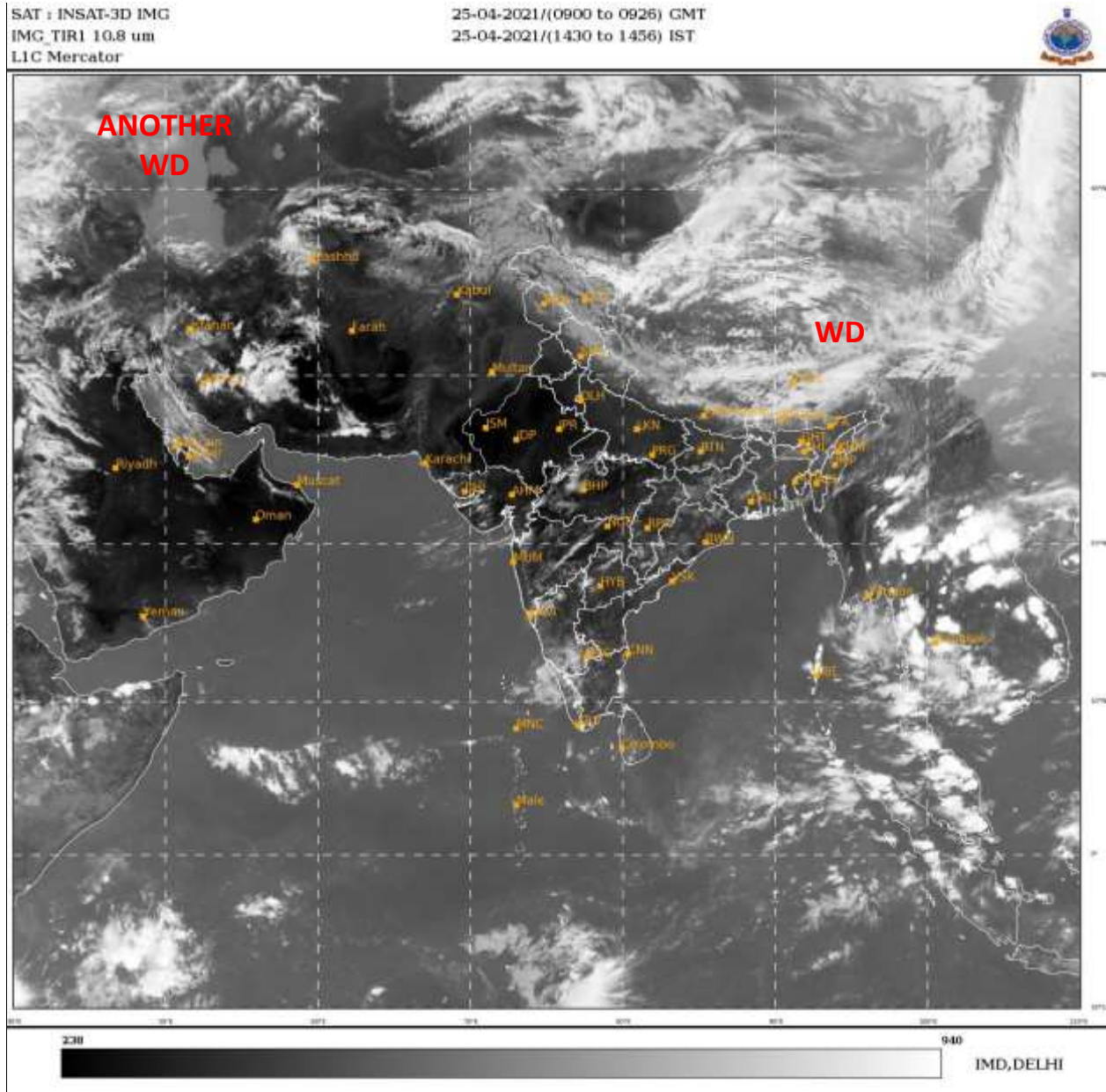


भारत मौसम विज्ञान विभाग
पृथ्वी विज्ञान मंत्रालय
India Meteorological Department
Ministry of Earth Sciences



**SATELLITE BULLETIN BASED ON SATELLITE IMAGERIES
AND PRODUCTS**

25.04.2021 TIME 0900 UTC



TCIN50 DEMS 250900

SATELLITE BULLETIN BASED ON INSAT-3D PIC OF 250900 UTC (.)

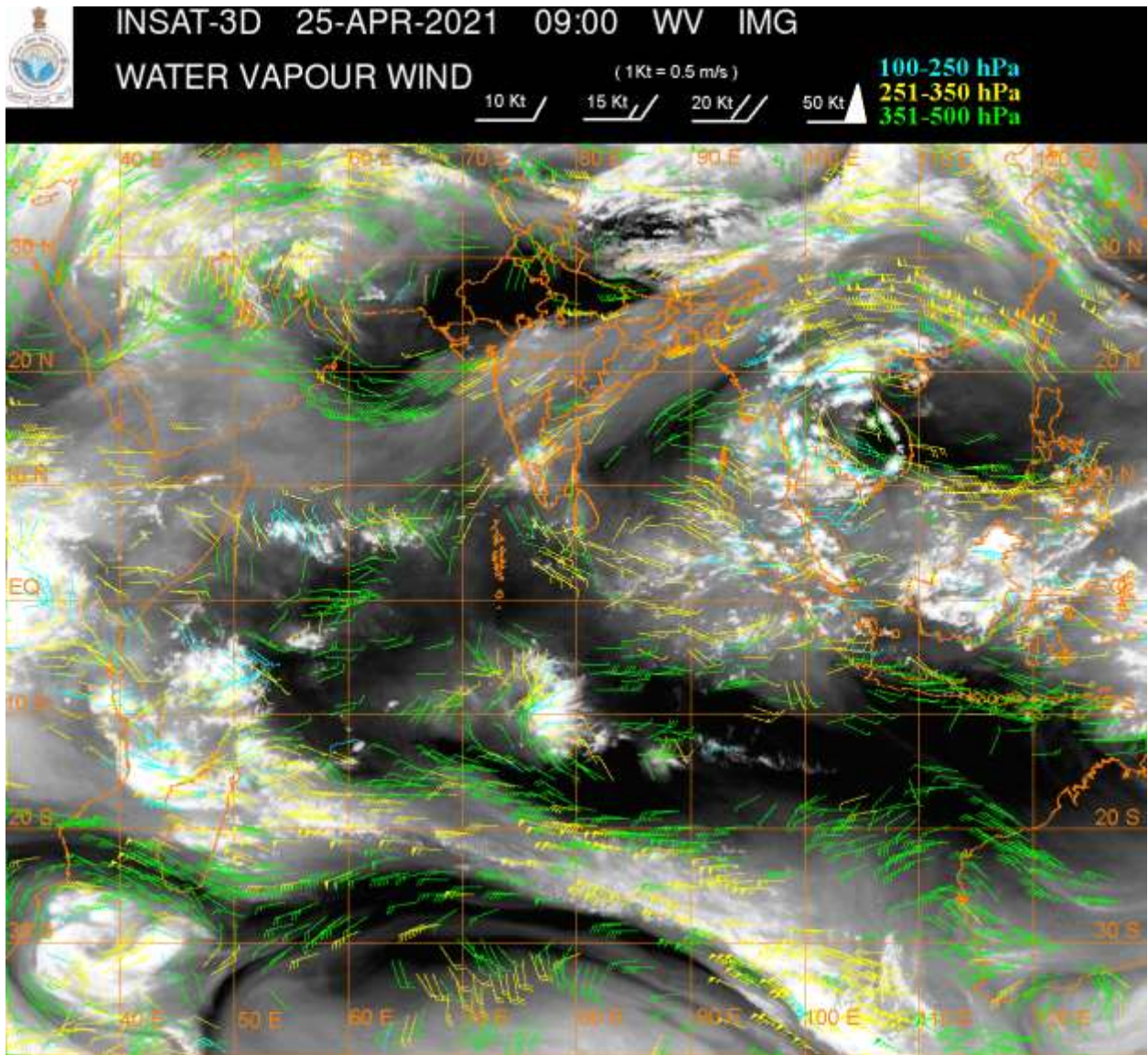
REGION COVERED BETWEEN LAT 50.0°N TO 30.0°S AND LONG 40.0°E TO 125.0°E (.)

SALIENT FEATURES:-

WESTERN DISTURBANCE (WD):-

SCT TO BKN MULTILAYERED CLOUDS E TIBET ADJ CHINA AND N/HOOD IN ASSW **WD** OVER THE AREA (.)

SCT MULTILAYERED CLOUDS OVER N CASPIAN SEA W IRAN AND N/HOOD IN ASSW **ANOTHER WD** OVER THE AREA (.)



CLOUDS DESCRIPTION WITHIN INDIA:-

NORTH:-

SCT LOW/MED CLOUDS WITH EMBDD ISOL MOD TO INT CONV'TN OVER NE LADAKH (.) SCT LOW/MED CLOUDS WITH EMBDD ISOL WK TO MOD CONV'TN OVER LADAKH N HP EXT N UTRKND (.) SCT LOW/MED CLOUDS OVER J&K S LADAKH (.)

EAST:-

SCT LOW/MED CLOUDS WITH EMBDD WK CONV'TN OVER SKM ARUPR (.) SCT LOW/MED CLOUDS OVER S BHR SC ORS NW JHRKND CHTGH EC ASSAM MEGHA NAGA MANI MIZO (.)

WEST:-

SCT LOW/MED CLOUDS WITH EMBDD WK TO MOD CONV'TN OVER NW MP & EXT SE GUJ ADJ SE RAJ CENTRAL PARTS OF MADHYA MAHA VID MRTHWD (.)

SOUTH:-

SCT LOW/MED CLOUDS WITH EMBDD ISOL WK TO MOD CONV'TN OVER SIK NC KER NW TN TLNGN & NICOBAR ILS (.) SCT LOW/MED CLOUDS OVER NIK CENTRAL PARTS OF N COTL AP RYLSM REST TN (.)

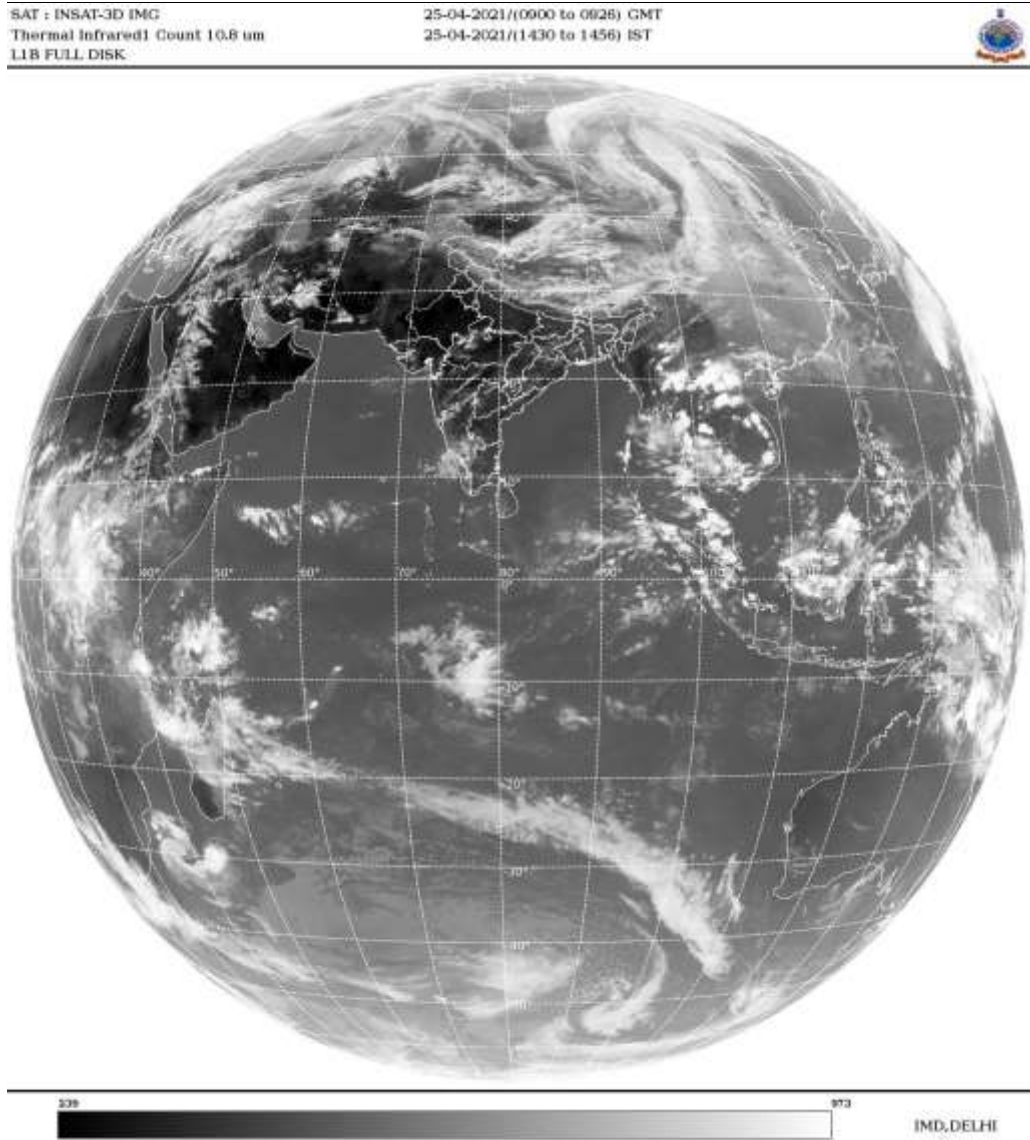
ARABIAN SEA:-

SCT LOW/MED CLOUDS WITH EMBDD WK TO MOD CONV'TN OVER SE ARSEA OFF KER COAST (.) SCT LOW/MED CLOUDS WITH EMBDD ISOL WK TO MOD CONV'TN OVER EC ARSEA (.)

BAY OF BENGAL & ANDAMAN SEA:-

**SCT LOW/MED CLOUDS WITH EMBDD INT TO V INT CONV TN OVER TENASSERIM COAST
(.)SCT LOW/MED CLOUDS WITH EMBDD MOD TO INT CONV TN OVER SE BAY ADJ S ANDAMAN
SEA (.)**

CLOUDS DESCRIPTION OUTSIDE INDIA:-



**SCT LOW/MED CLOUDS WITH EMBDD MOD TO INT CONV TN OVER TIBET CHINA E CHINA SEA
S MYNMAR W THAILAND GULF OF THAILAND N LAOS N VIETNAM GULF OF TONKIN
SUMATRA STR OF MALACCA MALAY PENINSULA BORNEO S CHINA SEA CELEBES ILS & SEA
S PHILIPPINES N MADAGASCAR N MOZAMBIQUE CHANNEL AND OVER INDIAN OCEAN BET
LAT 5.0N TO 4.0S EAST OF LONG 85.0E AND BET 04.5S TO 20.0S LONG 45.0E TO 90.0E (.)**

TOO 25/1515EF=

NNNN

LEGEND:-

REGION	NORTH	J&K HP PJB HARY DLH UP UTRKND
	EAST	BHR JHRKND CHTGH ORS WB SKM NORTH-EAST STATES
	WEST	RAJ MP GUJ MAHA GOA

	SOUTH	TLNGN AP KRNTK KER TN LKSDP ANDAMAN & NICOBAR ILS
--	--------------	--

CLOUD DISTRIBUTION	ISOL	ISOLATED (LESS THAN 25%)
	SCT	SCATTERED (25 TO 50%)
	BKN	BROKEN (51 TO 75%)
	SLD	SOLID (GREATER THAN 75%)
CLOUDS TOP TEMPERATURE	CTT	CLOUD TOP TEMPERATURE
CONVECTION	WK CONVTN	WEAK CONVECTION (CTT GREATER THAN -25°C)
	MOD CONVTN	MODERATE CONVECTION (CTT BETWEEN -25°C TO -40°C)
	INT CONVTN	INTENSE CONVECTION (CTT BETWEEN -41°C TO -70°C)
	V INT CONVTN	VERY INTENSE CONVECTION (CTT LESS THAN -70°C)
METEOROLOGICAL SUB-DIVISIONS, STATES & UNION TERRITORIES	ARUPR	ARUNACHAL PRADESH
	BHR	BIHAR
	CHTGH	CHHATTISGARH
	COTL AP	COASTAL ANDHRA PRADESH
	COTL KRNTK	COASTAL KARNATAKA
	COTL ORS	COASTAL ORISSA
	GUJ	GUJARAT
	GWB	GANGETIC WEST BENGAL
	HARY	HARYANA
	DLH	DELHI
	HP	HIMACHAL PRADESH
	J&K	JAMMU AND KASHMIR
	JHRKND	JHARKHAND
	KER	KERALA
	KKN	KONKAN
	LKSDP	LAKSHADWEEP
	M MAHA	MADHYA MAHARASHTRA
	MAHA	MAHARASHTRA
	MANI	MANIPUR
	MEGHA	MEGHALAYA
	MIZO	MIZORAM
	MP	MADHYA PRADESH
	MRTHWD	MARATHWADA
	NAGA	NAGALAND
	N COTL AP	NORTH COASTAL ANDHRA PRADESH
	NIK	NORTH INTERIOR KARNATAKA
	ORS	ORISSA
	PJB	PUNJAB
RAJ	RAJASTHAN	

	RYLSM	RAYALASEEMA
	SAU & KUTCH	SAURASHTRA & KUTCH
	SHWB	SUB-HIMALAYAN WEST BENGAL
	SIK	SOUTH INTERIOR KARNATAKA
	SKM	SIKKIM
	TLNGN	TELANGANA
	TN	TAMIL NADU
	TRP	TRIPURA
	UP	UTTAR PRADESH
	UTRKN	UTTARAKHAND
	VID	VIDHARBHA
	SHWB	SUB HIMALAYAN WEST BENGAL
	GWB	GANGETIC WEST BENGAL
	ARSEA	ARABIAN SEA
	ILS	ISLANDS
MISCELLANEOUS	ASSW	IN ASSOCIATION WITH
	ASSTD	ASSOCIATED
	LLC	LOW LEVEL CIRCULATION
	EMBDD	EMBEDDED
	N/HOOD	NEIGHBOURHOOD
	EXT	EXTREME