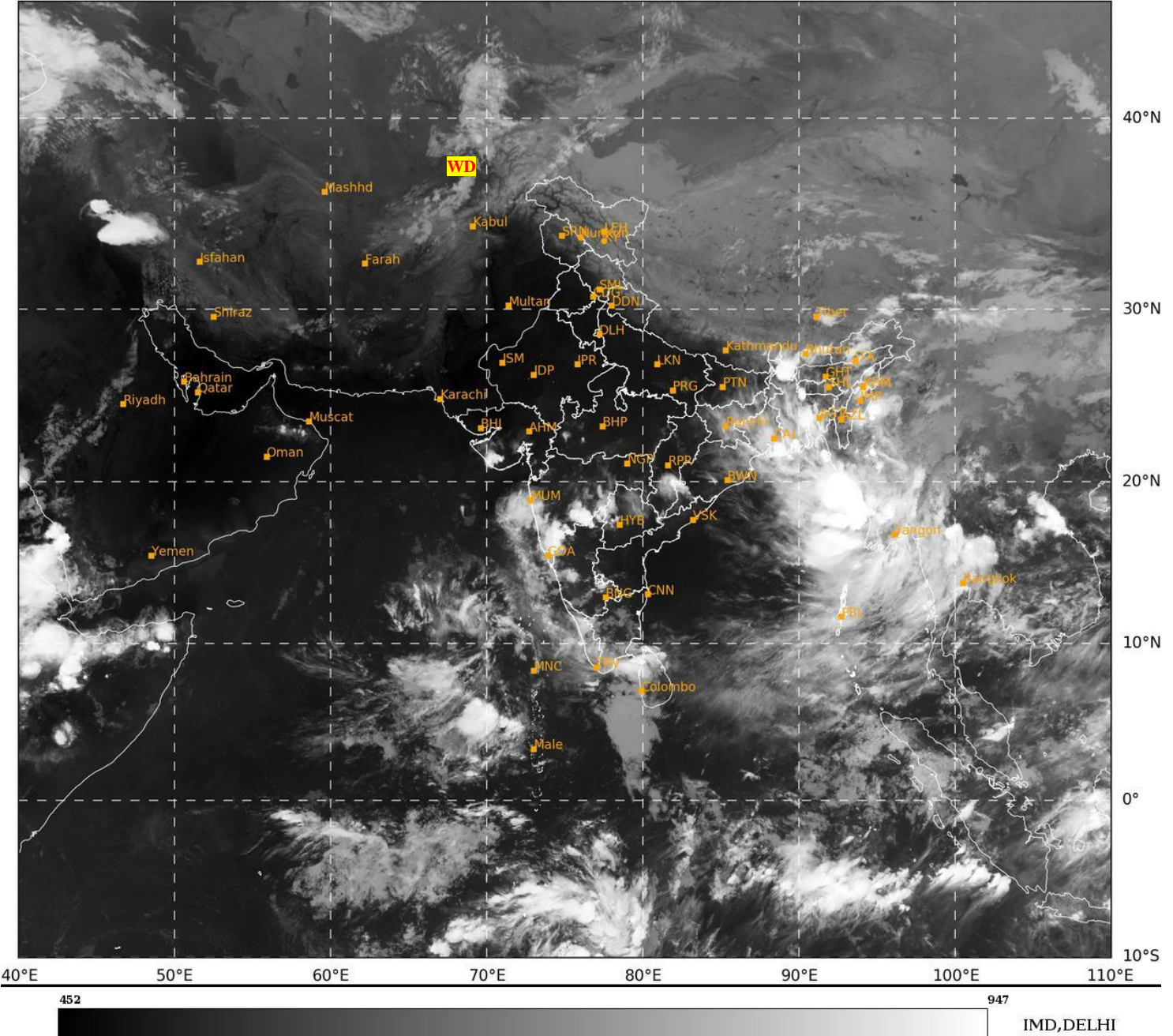




**SATELLITE BULLETIN BASED ON SATELLITE
IMAGERIES AND PRODUCTS**
01.10.2024 TIME 1800 UTC

SAT : INSAT-3DR IMG
IMG_TIR1 10.8 um
L1C Mercator

01-10-2024/(1645 to 1712) GMT
01-10-2024/(2215 to 2242) IST



TCIN50 DEMS 011800

SATELLITE BULLETIN BASED ON INSAT-3DR PIC OF 011645 UTC (.)

REGION COVERED BETWEEN LAT 50.0°N TO 35.0°S AND LONG 40.0°E TO 125.0°E (.)

SALIENT FEATURES:-

CONVECTION OVER SOUTH-EAST ARSEA & N/HOOD:-

INTENSE TO VERY INTENSE CONV'TN OVER SE ARSEA & N/HOOD PERSIST (.)

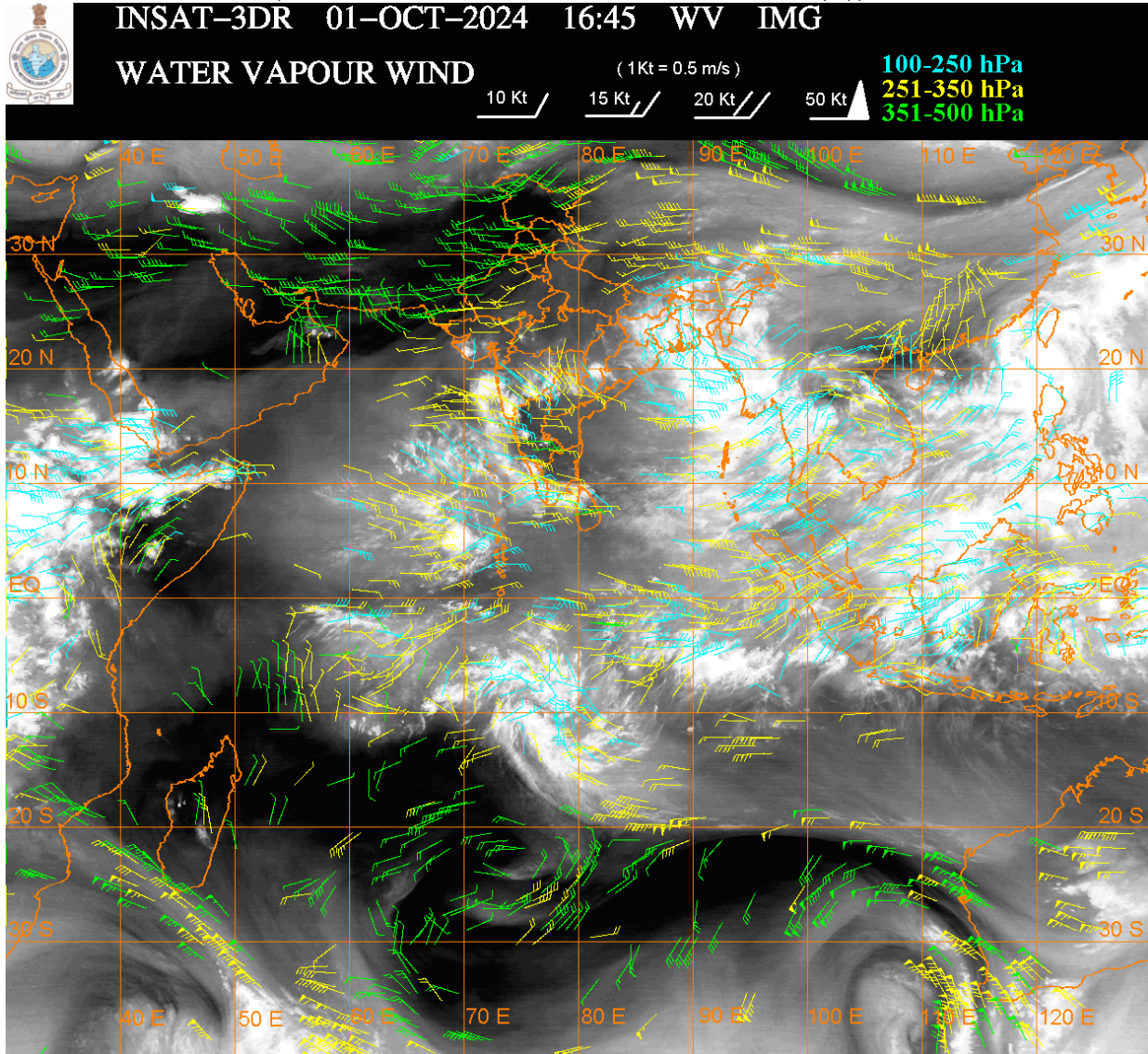
WESTERN DISTURBANCE (WD):-

SCT MULTILAYERED CLOUDS OVER E AFGAN ADJ EXT N PAK & N/HOOD IN ASSW **WD** OVER THE AREA (.)

CONVECTIVE / THUNDERSTORM ACTIVITY:-

**INTENSE TO VERY INTENSE CONVECTIVE / THUNDERSTORM ACTIVITY OBSERVED SHWB S
GWB W MEGHA S KKN MRTHWD GOA NIK N TLNGN (MINIMUM CTT MINUS 70-90 DEG CEL)
(.)**

**MODERATE TO INTENSE CONVECTIVE / THUNDERSTORM ACTIVITY OBSERVED OVER N
GWB ASSAM ARUPR MANI S ORS S CHTGH S TN KER SW MP S GUJ JHRKND ANDAMAN &
NICOBAR ILS LKSDP ILS (MINIMUM CTT MINUS 45-65 DEG CEL) (.)**



CLOUDS DESCRIPTION WITHIN INDIA:-

NORTH:-

**SCT LOW/MED CLOUDS WITH EMBDD ISOL WK CONVTN OVER LADKAH (.) ISOL LOW/MED
CLOUDS OVER J&K HP UTRKND PJB HARY UP (.)**

EAST:-

**SCT TO BKN LOW/MED CLOUDS WITH EMBDD INT TO V INT CONVTN OVER SHWB W MEGHA
S GWB (.) SCT LOW/MED CLOUDS WITH EMBDD MOD TO INT CONVTN OVER S ORS S CHTGH
N GWB ASSAM ARUPR MANI AND ISOL WK TO MOD CONVTN OVER SKM REST NE STATES (.)
SCT LOW/MED CLOUDS OVER BHR JHRKND (.)**

WEST:-

**SCT TO BKN LOW/MED CLOUDS WITH EMBDD INT TO V INT CONVTN OVER S KKN GOA
MRTHWD (.) SCT LOW/MED CLOUDS WITH EMBDD MOD TO INT CONVTN OVER SW MP S GUJ
(.) SCT LOW/MED CLOUDS OVER RAJ REST MP GUJ REST MAHA (.)**

SOUTH:-

**SCT LOW/MED CLOUDS WITH EMBDD INT TO V INT CONVTN OVER N TLNGN NIK (.) ISOL
LOW/MED CLOUDS WITH EMBDD MOD TO INT CONVTN OVER REST KRNTK S TLNGN TN
KER ANDAMAN & NICOBAR ILS LKSDP ILS AREA (.) ISOL TO SCT LOW/MED CLOUDS OVER
COTL AP RYLSM (.)**

ARABIAN SEA:-

SCT LOW/MED CLOUDS WITH EMBDD INT TO V INT CONVTN OVER LKSDP ILS AREA SE & EC ARSEA MALDIVES & COMORIN AREA ADJ EQUATORIAL INDIAN OCEAN (MINIMUM CTT MINUS 75-90 DEG CEL) (.) SCT LOW/MED CLOUDS WITH EMBDD ISOL WK TO MOD CONVTN OVER SW ARSEA (.)

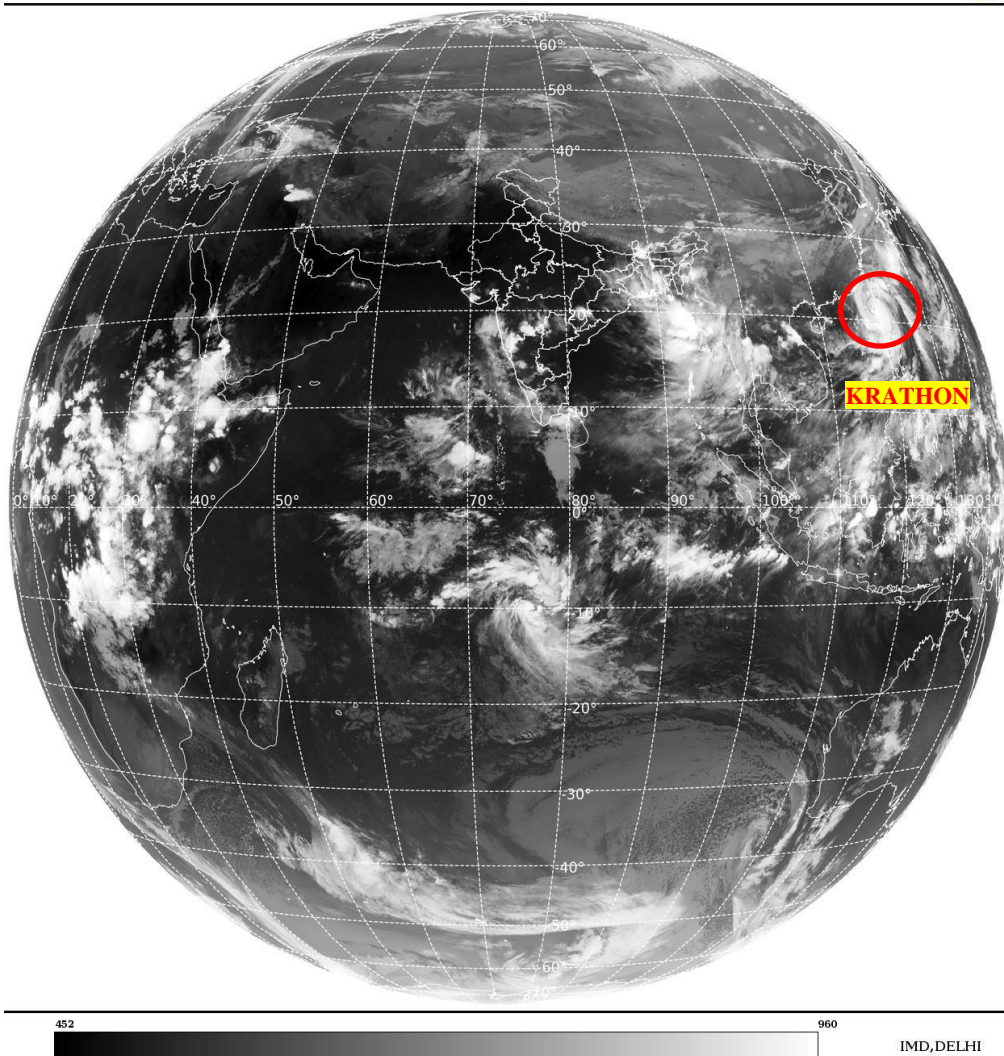
BAY OF BENGAL & ANDAMAN SEA:-

SCT LOW/MED CLOUDS WITH EMBDD INT TO V INT CONVTN OVER NE & EC BAY NORTH ANDAMAN SEA GULF OF MARTABAN TENASSERIM COAST & ARAKAN COAST (MINIMUM CTT MINUS 75-93 DEG CEL) (.) SCT LOW/MED CLOUDS WITH EMBDD ISOL WK TO MOD CONVTN OVER NW & SE BAY SOUTH ANDAMAN SEA (.)

CLOUDS DESCRIPTION OUTSIDE INDIA:-

SAT : INSAT-3DR IMG
Thermal Infrared1 Count 10.8 um
L1B FULL DISK

01-10-2024/(1645 to 1712) GMT
01-10-2024/(2215 to 2242) IST



VORTEX (KRATHON) OVER EAST CHINA SEA:-

VORTEX (KRATHON) OVER EAST CHINA SEA (AREA F05) CENTERED NEAR 21.4N / 119.6E (.) INTENSITY T6.0/7.0 (.) MAXIMUM SUSTAINED WINDS OF 120-140 KTS (.) ASSTD BKN LOW/MED CLOUDS WITH EMBDD INT TO V INT CONVTN OVER AREA BET LAT 13.5N TO 24.0N LONG 113.0E TO 126.5E & NORTH PHILIPPINES TAIWAN (MINIMUM CTT MINUS 93 DEG CEL) (.)

SCT LOW/MED CLOUDS WITH EMBDD MOD TO INT CONVTN OVER S SRI LANKA MALDIVES BHUTAN CHINA YELLOW SEA EAST CHINA SEA TAIWAN MYANMAR THAILAND GULF OF THAILAND CAMBODIA LAOS VIETNAM SUMATRA STR OF MALACCA MALAYSIA BORNEO SOUTH CHINA SEA JAVA ILS & SEA CELEBES ILS & SEA PHILIPPINES SULU SEA AND OVER INDIAN OCEAN BET LAT 5.0N TO 20.0S LONG 56.0E TO 108.0E (.)

TOO 02/0040 HRS IST=

NNNN

LEGEND:-

REGION	NORTH	J&K HP PJB HARY DLH UP UTRKND	
	EAST	BHR JHRKND CHTGH ORS WB SKM NORTH- EAST STATES	
	WEST	RAJ MP GUJ MAHA GOA	
	SOUTH	TLNGN AP KRNTK KER TN LKSDP ANDAMAN & NICOBAR ILS	
CLOUD DISTRIBUTION	ISOL	ISOLATED (LESS THAN 25%)	
	SCT	SCATTERED (25 TO 50%)	
	BKN	BROKEN (51 TO 75%)	
	SLD	SOLID (GREATER THAN 75%)	
CLOUDS TOP TEMPERATURE	CTT	CLOUD TOP TEMPERATURE	
CONVECTION	WK CONVTN	WEAK CONVECTION (CTT GREATER THAN -25°C)	
	MOD CONVTN	MODERATE CONVECTION (CTT BETWEEN -25°C TO -40°C)	
	INT CONVTN	INTENSE CONVECTION (CTT BETWEEN -41°C TO -70°C)	
	V INT CONVTN	VERY INTENSE CONVECTION (CTT LESS THAN -70°C)	
METEOROLOGICAL SUB- DIVISIONS, STATES & UNION TERRITORIES	ARUPR	ARUNACHAL PRADESH	
	BHR	BIHAR	
	CHTGH	CHHATTISGARH	
	COTL AP	COASTAL ANDHRA PRADESH	
	COTL KRNTK	COASTAL KARNATAKA	
	COTL ORS	COASTAL ORISSA	
	GUJ	GUJARAT	
	GWB	GANGETIC WEST BENGAL	
	HARY	HARYANA	
	DLH	DELHI	
	HP	HIMACHAL PRADESH	
	J&K	JAMMU AND KASHMIR	
	JHRKND	JHARKHAND	
	KER	KERALA	
	KKN	KONKAN	
	LKSDP	LAKSHADWEEP	
	M MAHA	MADHYA MAHARASHTRA	
	MAHA	MAHARASHTRA	
	MANI	MANIPUR	
	MEGHA	MEGHALAYA	
	MIZO	MIZORAM	
	MP	MADHYA PRADESH	
		MRTHWD	MARATHWADA
		NAGA	NAGALAND
N COTL AP		NORTH COASTAL ANDHRA PRADESH	
NIK		NORTH INTERIOR KARNATAKA	
ORS		ORISSA	

	PJB	PUNJAB
	RAJ	RAJASTHAN
	RYLSM	RAYALASEEMA
	SAU & KUTCH	SAURASHTRA & KUTCH
	SHWB	SUB-HIMALAYAN WEST BENGAL
	SIK	SOUTH INTERIOR KARNATAKA
	SKM	SIKKIM
	TLNGN	TELANGANA
	TN	TAMIL NADU
	TRP	TRIPURA
	UP	UTTAR PRADESH
	UTRKND	UTTARAKHAND
	VID	VIDHARBHA
	SHWB	SUB HIMALAYAN WEST BENGAL
	GWB	GANGETIC WEST BENGAL
	ARSEA	ARABIAN SEA
	ILS	ISLANDS
MISCELLANEOUS	ASSW	IN ASSOCIATION WITH
	ASSTD	ASSOCIATED
	LLC	LOW LEVEL CIRCULATION
	EMBDD	EMBEDDED
	N/HOOD	NEIGHBOURHOOD
	EXT	EXTREME