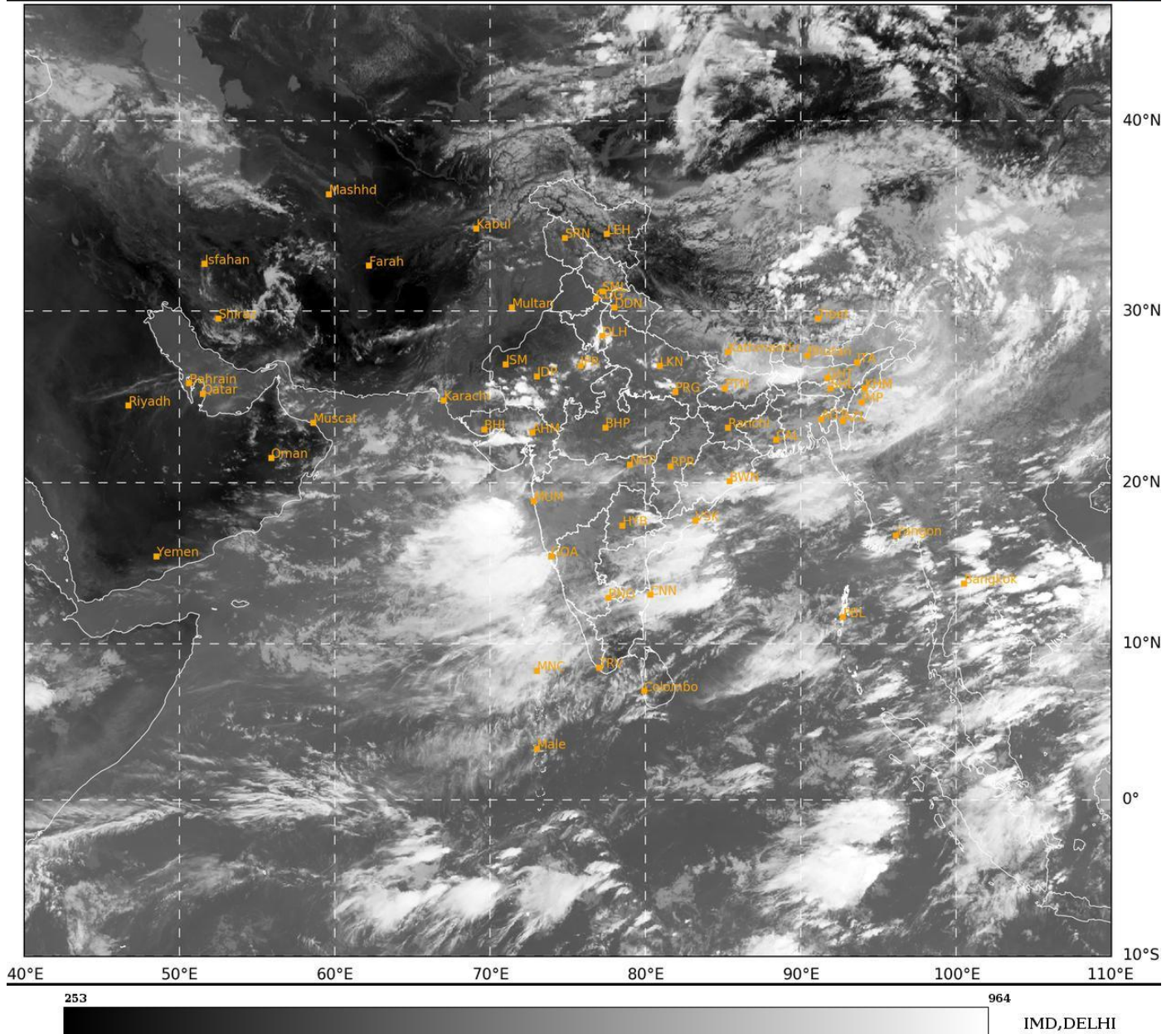




**SATELLITE BULLETIN BASED ON SATELLITE  
IMAGERIES AND PRODUCTS**  
**09.07.2024 TIME 0600 UTC**

SAT : INSAT-3DR IMG  
IMG\_TIR1 10.8 um  
LIC Mercator

09-07-2024/(0615 to 0642) GMT  
09-07-2024/(1145 to 1212) IST



**TCIN50 DEMS 090600**

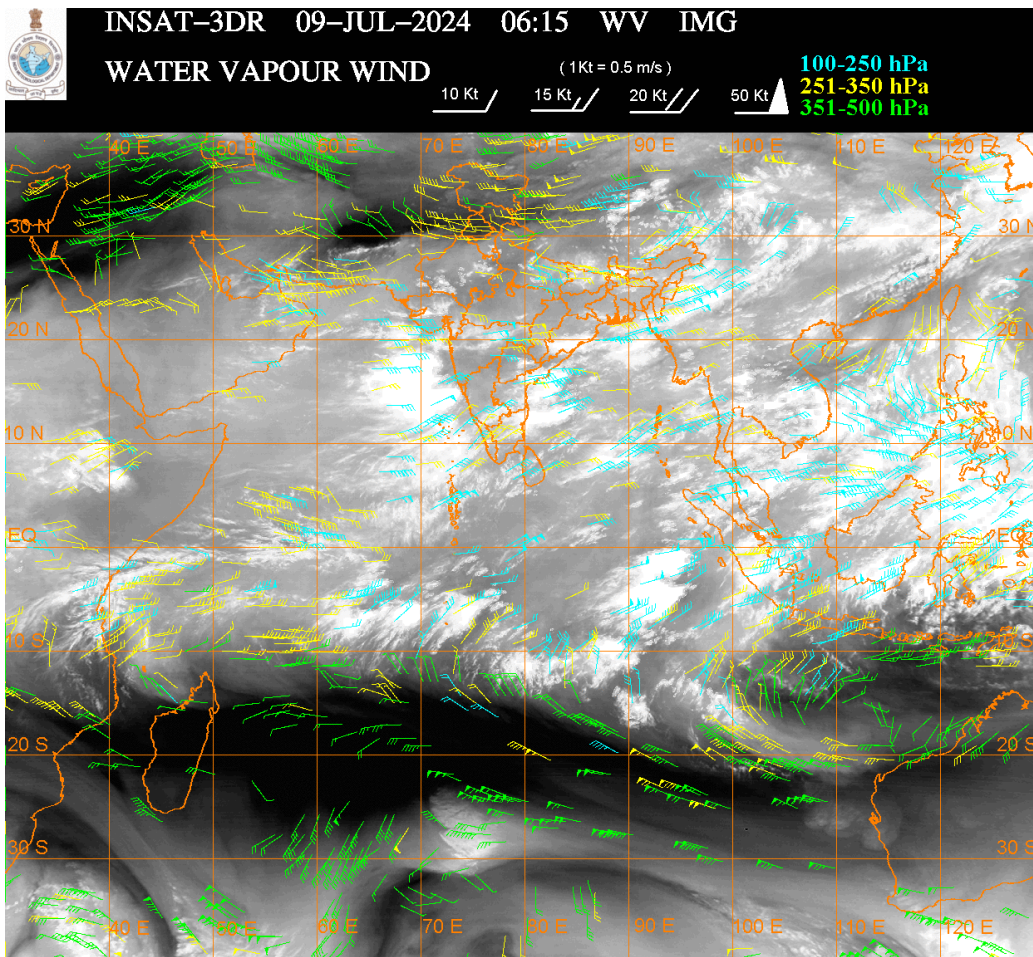
**SATELLITE BULLETIN BASED ON INSAT-3DR PIC OF 090615 UTC (.)**

**REGION COVERED BETWEEN LAT 50.0°N TO 35.0°S AND LONG 40.0°E TO 125.0°E (.)**

**SALIENT FEATURES:-**

**CONVECTIVE / THUNDERSTORM ACTIVITY:-**

**MODERATE TO INTENSE CONVECTIVE / THUNDERSTORM ACTIVITY OBSERVED OVER SE HARY DLH SC UP N BHR NORTH SHWB E ORS E RAJ SE MP W GUJ COTL AP SIK NE TN LKSDP ILS (MINIMUM CTT MINUS 45-70 DEG CEL) (.)**



**CLOUDS DESCRIPTION WITHIN INDIA:-**

**NORTH:-**

SCT LOW/MED CLOUDS WITH EMBDD MOD TO INT CONVTN OVER SE HARY DLH W UP (.)  
SCT LOW/MED CLOUDS WITH EMBDD ISOL WK CONVTN OVER LADAKH N HP NE UP (.) SCT  
LOW/MED CLOUDS OVER S HP UTRKND REST HARY REST UP (.)

**EAST:-**

SCT LOW/MED CLOUDS WITH EMBDD MOD TO INT CONVTN OVER N BHR E ORS NORTH  
SHWB (.) SCT LOW/MED CLOUDS WITH EMBDD WK TO MOD CONVTN OVER SE BHR NE ORS  
GWB SOUTH SHWB SKM & REST NE STATES (.) SCT LOW/MED CLOUDS OVER JHRKND  
CHTGH W ORS (.)

**WEST:-**

SCT LOW/MED CLOUDS WITH EMBDD ISOL INT TO V INT CONVTN OVER SW RAJ WC GUJ (.)  
SCT LOW/MED CLOUDS WITH EMBDD MOD TO INT CONVTN OVER NC GUJ NE RAJ SE MP  
AND ISOL WK TO MOD CONVTN OVER REST S GUJ SW MP NORTH MADHYA MAHA VID N  
KKN (.) SCT LOW/MED CLOUDS OVER NW RAJ REST MP MRTHWD SOUTH MADHYA MAHA S  
KKN & GOA (.)

**SOUTH:-**

SCT LOW/MED CLOUDS WITH EMBDD MOD TO INT CONVTN OVER SE TLNGN COTL AP NE TN  
SIK LKSDP ILS (.) SCT LOW/MED CLOUDS WITH EMBDD WK TO MOD CONVTN OVER COTL  
KRNTK RYLSM KER W TN ANDAMAN & NICOBAR ILS (.)SCT LOW/MED CLOUDS OVER NIK  
REST TLNGN (.)

**ARABIAN SEA:-**

SCT LOW/MED CLOUDS WITH EMBDD INT TO V INT CONVTN OVER EC & SE ARSEA OFF  
MAHA-GOA-KRNTK-KER COASTS AND LKSDP ILS AREA (.) SCT LOW/MED CLOUDS WITH  
EMBDD MOD TO INT CONVTN OVER MALDIVES & COMORIN AREA (.) SCT LOW/MED CLOUDS  
WITH EMBDD WK TO MOD CONVTN OVER GULF OF CAMBAY NORTH & WEST ARSEA GULF  
OF KUTCH (.)

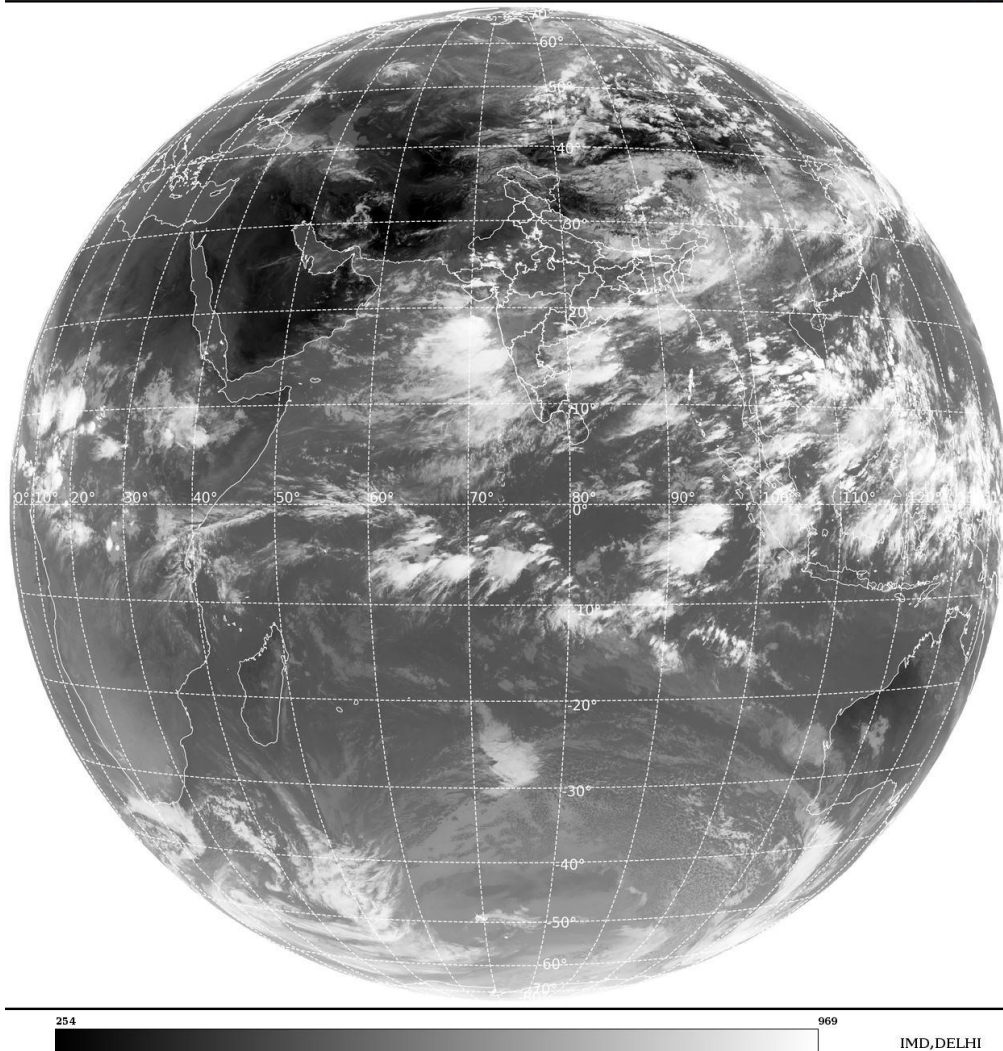
**BAY OF BENGAL & ANDAMAN SEA:-**

SCT LOW/MED CLOUDS WITH EMBDD INT TO V INT CONVTN OVER NORTH BAY WC ADJ SW  
BAY OFF S AP-N TN COASTS SE BAY (.) SCT LOW/MED CLOUDS WITH EMBDD MOD TO INT  
CONVTN OVER REST BAY ANDAMAN SEA ARAKAN COAST & TENASSERIM COAST (.)

**CLOUDS DESCRIPTION OUTSIDE INDIA:-**

SAT : INSAT-3DR IMG  
Thermal Infrared1 Count 10.8 um  
L1B FULL DISK

09-07-2024/(0615 to 0642) GMT  
09-07-2024/(1145 to 1212) IST



**SCT LOW/MED CLOUDS WITH EMBDD MOD TO INT CONVTN OVER N SRI LANKA PALK STR GULF OF MANNAR MALDIVES PAK NEPAL BHUTAN TIBET CHINA YELLOW SEA EAST CHINA SEA MYANMAR THAILAND GULF OF THAILAND CAMBODIA LAOS VIETNAM SUMATRA STR OF MALACCA MALAYSIA BORNEO SOUTH CHINA SEA & SEA JAVA ILS & SEA CELEBES ILS & SEA PHILIPPINES SULU SEA AND OVER INDIAN OCEAN BET LAT 5.0N TO 15.0S LONG 40.0E TO 105.0E (.)**

**TOO 09/1240 HRS IST=**

**NNNN**

**LEGEND:-**

<b>REGION</b>	<b>NORTH</b>	<b>J&amp;K HP PJB HARY DLH UP UTRKND</b>
	<b>EAST</b>	<b>BHR JHRKND CHTGH OR WB SKM NORTH- EAST STATES</b>
	<b>WEST</b>	<b>RAJ MP GUJ MAHA GOA</b>
	<b>SOUTH</b>	<b>TLNGN AP KRNTK KER TN LKSDP ANDAMAN &amp; NICOBAR ILS</b>
<b>CLOUD DISTRIBUTION</b>	<b>ISOL</b>	<b>ISOLATED (LESS THAN 25%)</b>
	<b>SCT</b>	<b>SCATTERED (25 TO 50%)</b>
	<b>BKN</b>	<b>BROKEN (51 TO 75%)</b>
	<b>SLD</b>	<b>SOLID (GREATER THAN 75%)</b>

<b>CLOUDS TOP TEMPERATURE</b>	<b>CTT</b>	<b>CLOUD TOP TEMPERATURE</b>
<b>CONVECTION</b>	<b>WK CONVTN</b>	<b>WEAK CONVECTION (CTT GREATER THAN -25°C)</b>
	<b>MOD CONVTN</b>	<b>MODERATE CONVECTION (CTT BETWEEN -25°C TO -40°C)</b>
	<b>INT CONVTN</b>	<b>INTENSE CONVECTION (CTT BETWEEN -41°C TO -70°C)</b>
	<b>V INT CONVTN</b>	<b>VERY INTENSE CONVECTION (CTT LESS THAN -70°C)</b>
<b>METEOROLOGICAL SUB- DIVISIONS, STATES &amp; UNION TERRITORIES</b>	<b>ARUPR</b>	<b>ARUNACHAL PRADESH</b>
	<b>BHR</b>	<b>BIHAR</b>
	<b>CHTGH</b>	<b>CHHATTISGARH</b>
	<b>COTL AP</b>	<b>COASTAL ANDHRA PRADESH</b>
	<b>COTL KRNTK</b>	<b>COASTAL KARNATAKA</b>
	<b>COTL ORS</b>	<b>COASTAL ORISSA</b>
	<b>GUJ</b>	<b>GUJARAT</b>
	<b>GWB</b>	<b>GANGETIC WEST BENGAL</b>
	<b>HARY</b>	<b>HARYANA</b>
	<b>DLH</b>	<b>DELHI</b>
	<b>HP</b>	<b>HIMACHAL PRADESH</b>
	<b>J&amp;K</b>	<b>JAMMU AND KASHMIR</b>
	<b>JHRKND</b>	<b>JHARKHAND</b>
	<b>KER</b>	<b>KERALA</b>
	<b>KKN</b>	<b>KONKAN</b>
	<b>LKSDP</b>	<b>LAKSHADWEEP</b>
	<b>M MAHA</b>	<b>MADHYA MAHARASHTRA</b>
	<b>MAHA</b>	<b>MAHARASHTRA</b>
	<b>MANI</b>	<b>MANIPUR</b>
	<b>MEGHA</b>	<b>MEGHALAYA</b>
	<b>MIZO</b>	<b>MIZORAM</b>
	<b>MP</b>	<b>MADHYA PRADESH</b>
	<b>MRTHWD</b>	<b>MARATHWADA</b>
	<b>NAGA</b>	<b>NAGALAND</b>
	<b>N COTL AP</b>	<b>NORTH COASTAL ANDHRA PRADESH</b>
	<b>NIK</b>	<b>NORTH INTERIOR KARNATAKA</b>
	<b>ORS</b>	<b>ORISSA</b>
	<b>PJB</b>	<b>PUNJAB</b>
	<b>RAJ</b>	<b>RAJASTHAN</b>
<b>RYLSM</b>	<b>RAYALASEEMA</b>	
<b>SAU &amp; KUTCH</b>	<b>SAURASHTRA &amp; KUTCH</b>	
<b>SHWB</b>	<b>SUB-HIMALAYAN WEST BENGAL</b>	
<b>SIK</b>	<b>SOUTH INTERIOR KARNATAKA</b>	
<b>SKM</b>	<b>SIKKIM</b>	
<b>TLNGN</b>	<b>TELANGANA</b>	
<b>TN</b>	<b>TAMIL NADU</b>	
<b>TRP</b>	<b>TRIPURA</b>	
<b>UP</b>	<b>UTTAR PRADESH</b>	

	<b>UTRKND</b>	<b>UTTARAKHAND</b>
	<b>VID</b>	<b>VIDHARBHA</b>
	<b>SHWB</b>	<b>SUB HIMALAYAN WEST BENGAL</b>
	<b>GWB</b>	<b>GANGETIC WEST BENGAL</b>
	<b>ARSEA</b>	<b>ARABIAN SEA</b>
	<b>ILS</b>	<b>ISLANDS</b>
<b>MISCELLANEOUS</b>	<b>ASSW</b>	<b>IN ASSOCIATION WITH</b>
	<b>ASSTD</b>	<b>ASSOCIATED</b>
	<b>LLC</b>	<b>LOW LEVEL CIRCULATION</b>
	<b>EMBDD</b>	<b>EMBEDDED</b>
	<b>N/HOOD</b>	<b>NEIGHBOURHOOD</b>
	<b>EXT</b>	<b>EXTREME</b>