



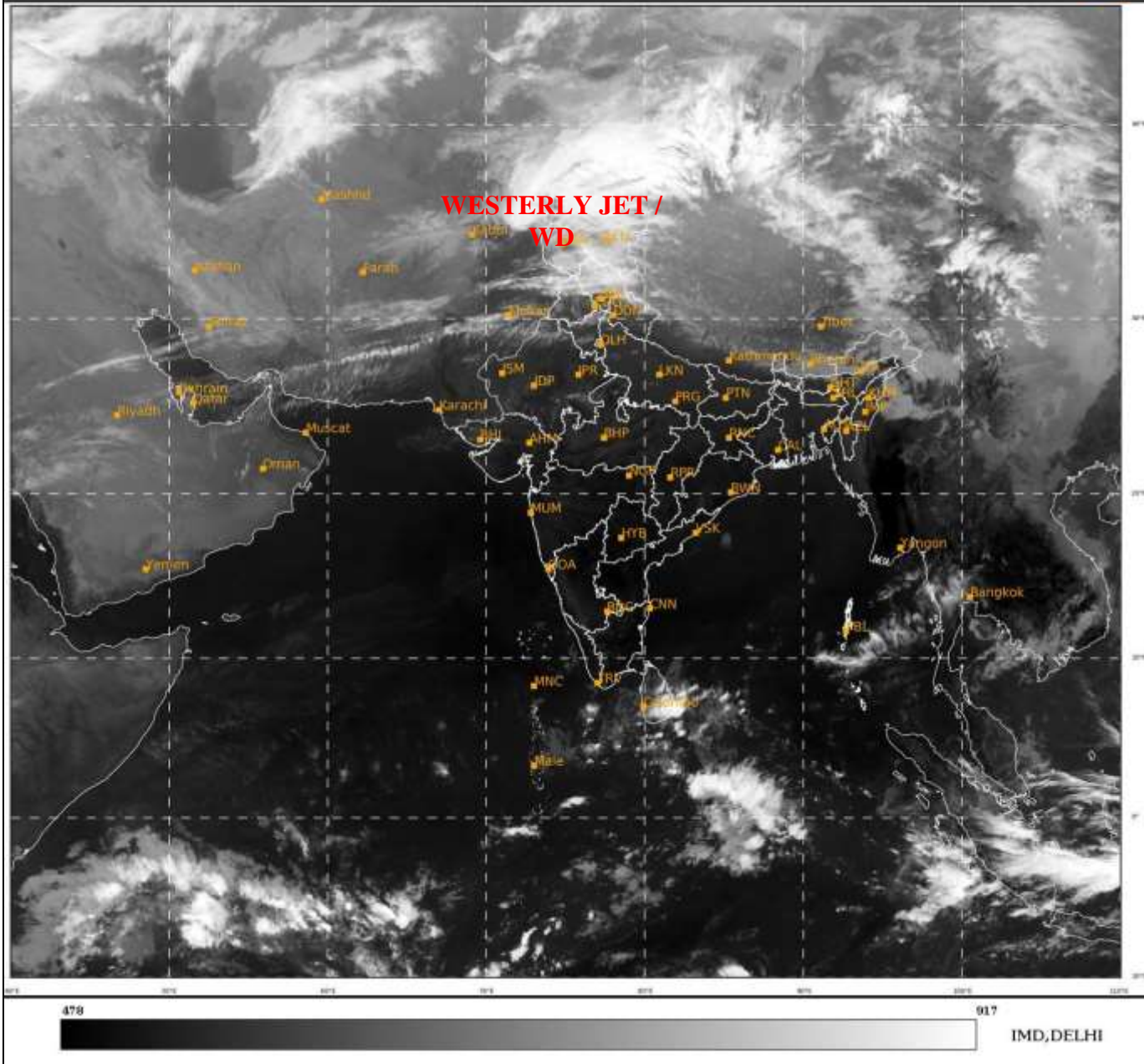
भारत मौसम विज्ञान विभाग  
पृथ्वी विज्ञान मंत्रालय  
India Meteorological Department  
Ministry of Earth Sciences



**SATELLITE BULLETIN BASED ON SATELLITE  
IMAGERIES AND PRODUCTS**  
**20.02.2023 TIME 0300 UTC**

SAT : INSAT-3D IMG  
IMG\_TIR1 10.8 um  
LIC Mercator

20-02-2023/(0300 to 0327) GMT  
20-02-2023/(0830 to 0857) IST



TCIN50 DEMS 200300

SATELLITE BULLETIN BASED ON INSAT-3D PIC OF 200300 UTC (.)

REGION COVERED BETWEEN LAT 50.0°N TO 35.0°S AND LONG 40.0°E TO 125.0°E (.)

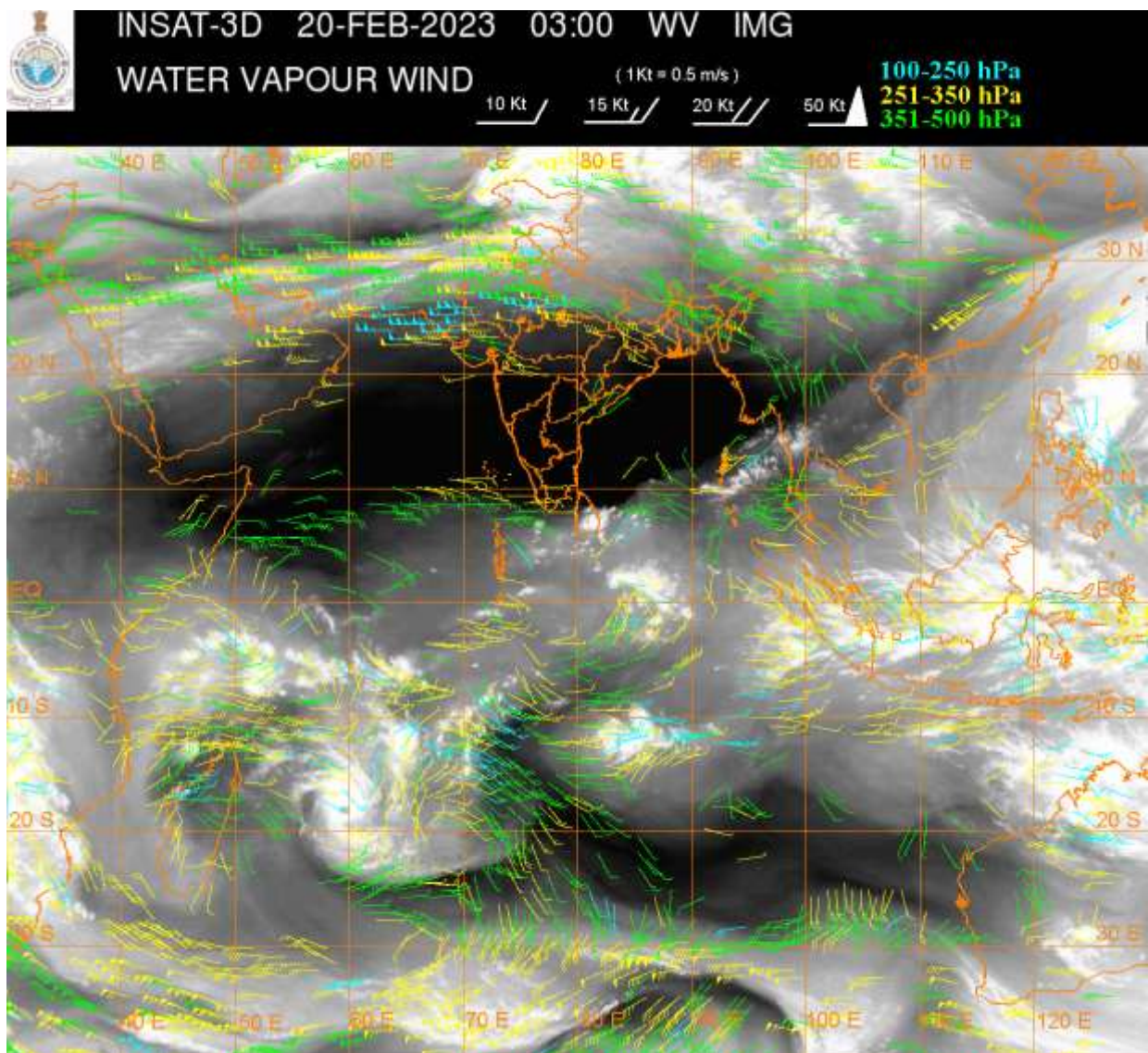
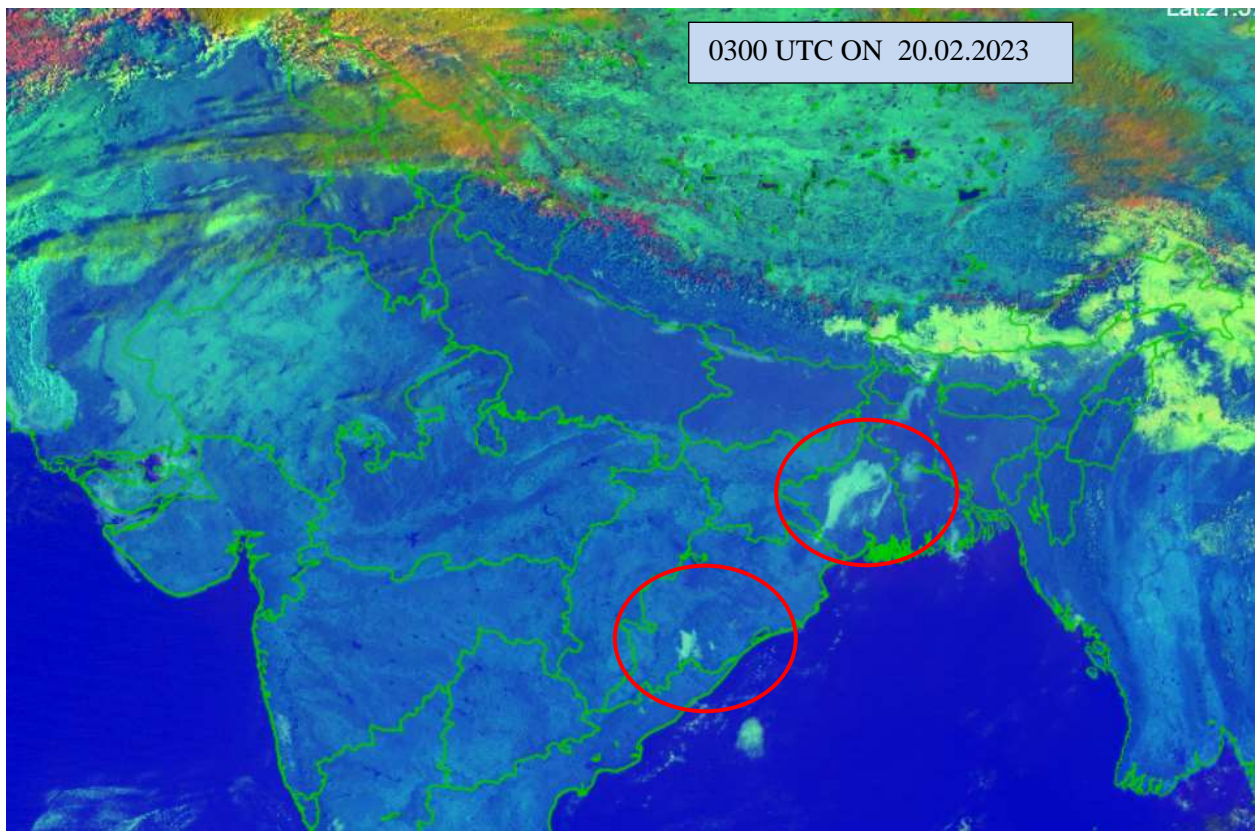
**SALIENT FEATURES:-**

**WESTERN DISTURBANCE (WD):-**

SCT MULTILAYERED CLOUDS OVER AFGAN PAK LADAKH J&K HP N UTRKND PJB N HARY  
EXTREME NW RAJ IN ASSW **WESTERLY JET STREAM / WD** OVER THE AREA (.)

**FOG/LOW CLOUDS:-**

DAY MICROPHYSICS OF INSAT-3D (RAPID) AT 0300 UTC INDICATES FOG/LOW CLOUDS OVER  
NW BHR N UP S GWB S ORS (.)



**CLOUDS DESCRIPTION WITHIN INDIA:-**

**NORTH:-**

SCT TO BKN LOW/MED CLOUDS WITH EMBDD MOD TO INT CONVTN OVER LADAKH J&K HP N PJB (.) SCT LOW/MED CLOUDS WITH EMBDD ISOL WK TO MOD CONVTN OVER S PJB N HARY N UTRKND (.) SCT LOW/MED CLOUDS OVER S UTRKND S HARY W UP (.)

**EAST:-**

SCT LOW/MED CLOUDS WITH EMBDD ISOL WK TO MOD CONVTN OVER SKM ARUPR N ASSAM NAGA (.) SCT LOW/MED CLOUDS OVER ORS GWB N SHWB REST NE STATES (.)

**WEST:-**

SCT LOW/MED WITH EMBDD ISOL WK CONV TN OVER N RAJ (.) SCT LOW/MED CLOUDS OVER S RAJ N MP N GUJ (.)

**SOUTH:-**

SCT LOW/MED WITH EMBDD ISOL WK TO MOD CONV TN OVER ANDAMAN & NICOBAR ILS (.) SCT LOW/MED CLOUDS OVER KER TN (.)

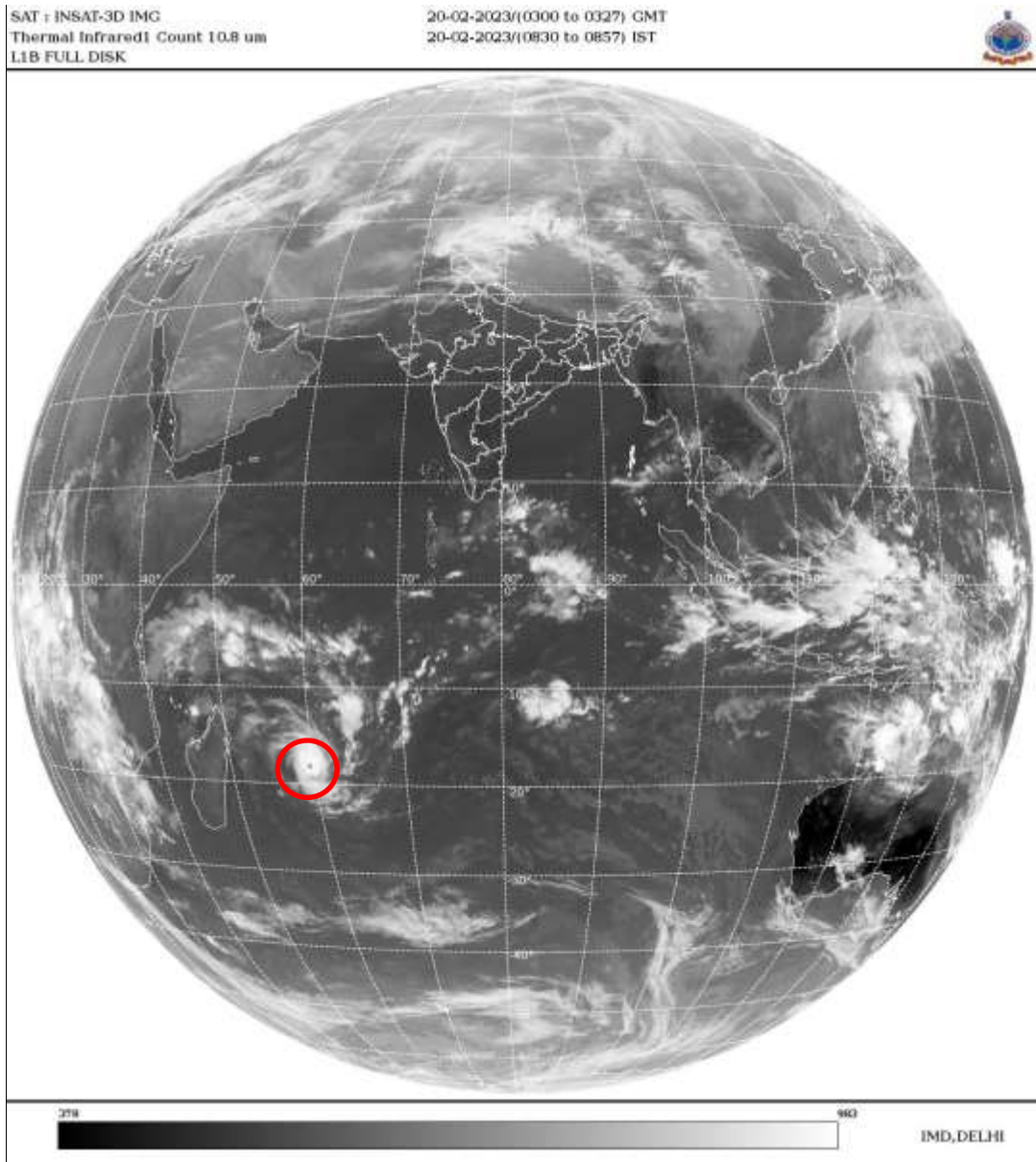
**ARABIAN SEA:-**

SCT LOW/MED CLOUDS WITH EMBDD ISOL MOD TO INT CONV TN OVER COMORIN AREA (.)

**BAY OF BENGAL & ANDAMAN SEA:-**

SCT LOW/MED CLOUDS WITH EMBDD MOD TO INT CONV TN OVER SW BAY SOUTH OF LAT 8.0N SOUTH SRILANKA AND ISOL WK TO MOD CONV TN OVER SE BAY ANDAMAN SEA (.)

**CLOUDS DESCRIPTION OUTSIDE INDIA:-**



**VORTEX (FREDDY) OVER SOUTH INDIAN OCEAN:-**

VORTEX (**FREDDY**) OVER SOUTH INDIAN OCEAN (**AREA D60 ADJ D65**) CENTERED NEAR **18.1S/59.6E** (.) INTENSITY **T6.0/7.0** (.) EYE VISISBE (.) CORRESPONDING MAXIMUM SUSTAINED WINDS OF **90-119 KNOTS** (.) ASSTD BKN LOW/MED CLOUDS WITH EMBDD INT TO V INT CONV TN OVER AREA BET LAT 15.5S TO 20.0S LONG 58.5E TO 62.5E (.)

SCT LOW/MED CLOUDS WITH EMBDD MOD TO INT CONV TN OVER S SRI LANKA N PAK TIBET CHINA SUMATRA STR OF MALACCA MALAYSIA BORNEO SOUTH CHINA SEA JAVA ILS & SEA CELEBES ILS & SEA PHILIPPINES E CHINA SEA N MOZAMBIQUE CHANNEL AND OVER INDIAN OCEAN BET LAT 2.0S TO 22.0S LONG 45.0E TO 70.0E AND BET LAT 5.0N TO 13.0S LONG 70.0E TO 114.0E (.)

TOO 20/0935 HRS IST=

NNNN

**LEGEND:-**

|               |              |  |
|---------------|--------------|--|
| <b>REGION</b> | <b>NORTH</b> | <b>J&amp;K HP PJB HARY DLH UP UTRKND</b>                         |
|               | <b>EAST</b>  | <b>BHR JHRKND CHTGH OR WB SKM<br/>NORTH- EAST STATES</b>         |
|               | <b>WEST</b>  | <b>RAJ MP GUJ MAHA GOA</b>                                       |
|               | <b>SOUTH</b> | <b>TLNGN AP KRNTK KER TN LKSDP<br/>ANDAMAN &amp; NICOBAR ILS</b> |

|   |                       |   |
|---|-----------------------|---|
| <b>CLOUD DISTRIBUTION</b>   | <b>ISOL</b>           | <b>ISOLATED (LESS THAN 25%)</b>                             |
|   | <b>SCT</b>            | <b>SCATTERED (25 TO 50%)</b>                                |
|   | <b>BKN</b>            | <b>BROKEN (51 TO 75%)</b>                                   |
|   | <b>SLD</b>            | <b>SOLID (GREATER THAN 75%)</b>                             |
| <b>CLOUDS TOP TEMPERATURE</b>                                       | <b>CTT</b>            | <b>CLOUD TOP TEMPERATURE</b>                                |
| <b>CONVECTION</b>   | <b>WK CONVTN</b>      | <b>WEAK CONVECTION<br/>(CTT GREATER THAN -25°C)</b>         |
|   | <b>MOD CONVTN</b>     | <b>MODERATE CONVECTION<br/>(CTT BETWEEN -25°C TO -40°C)</b> |
|   | <b>INT CONVTN</b>     | <b>INTENSE CONVECTION<br/>(CTT BETWEEN -41°C TO -70°C)</b>  |
|   | <b>V INT CONVTN</b>   | <b>VERY INTENSE CONVECTION<br/>(CTT LESS THAN -70°C)</b>    |
| <b>METEOROLOGICAL SUB-DIVISIONS, STATES &amp; UNION TERRITORIES</b> | <b>ARUPR</b>          | <b>ARUNACHAL PRADESH</b>                                    |
|   | <b>BHR</b>            | <b>BIHAR</b>  |
|   | <b>CHTGH</b>          | <b>CHHATTISGARH</b>   |
|   | <b>COTL AP</b>        | <b>COASTAL ANDHRA PRADESH</b>                               |
|   | <b>COTL KRNTK</b>     | <b>COASTAL KARNATAKA</b>                                    |
|   | <b>COTL ORS</b>       | <b>COASTAL ORISSA</b>                                       |
|   | <b>GUJ</b>            | <b>GUJARAT</b>  |
|   | <b>GWB</b>            | <b>GANGETIC WEST BENGAL</b>                                 |
|   | <b>HARY</b>           | <b>HARYANA</b>  |
|   | <b>DLH</b>            | <b>DELHI</b>  |
|   | <b>HP</b>             | <b>HIMACHAL PRADESH</b>                                     |
|   | <b>J&amp;K</b>        | <b>JAMMU AND KASHMIR</b>                                    |
|   | <b>JHRKND</b>         | <b>JHARKHAND</b>  |
|   | <b>KER</b>            | <b>KERALA</b>   |
|   | <b>KKN</b>            | <b>KONKAN</b>   |
|   | <b>LKSDP</b>          | <b>LAKSHADWEEP</b>  |
|   | <b>M MAHA</b>         | <b>MADHYA MAHARASHTRA</b>                                   |
|   | <b>MAHA</b>           | <b>MAHARASHTRA</b>  |
|   | <b>MANI</b>           | <b>MANIPUR</b>  |
|   | <b>MEGHA</b>          | <b>MEGHALAYA</b>  |
| <b>MIZO</b>   | <b>MIZORAM</b>        |   |
| <b>MP</b>   | <b>MADHYA PRADESH</b> |   |

|                      |                        |                                     |
|----------------------|------------------------|-------------------------------------|
|                      | <b>MRTHWD</b>          | <b>MARATHWADA</b>                   |
|                      | <b>NAGA</b>            | <b>NAGALAND</b>                     |
|                      | <b>N COTL AP</b>       | <b>NORTH COASTAL ANDHRA PRADESH</b> |
|                      | <b>NIK</b>             | <b>NORTH INTERIOR KARNATAKA</b>     |
|                      | <b>ORS</b>             | <b>ORISSA</b>                       |
|                      | <b>PJB</b>             | <b>PUNJAB</b>                       |
|                      | <b>RAJ</b>             | <b>RAJASTHAN</b>                    |
|                      | <b>RYLSM</b>           | <b>RAYALASEEMA</b>                  |
|                      | <b>SAU &amp; KUTCH</b> | <b>SAURASHTRA &amp; KUTCH</b>       |
|                      | <b>SHWB</b>            | <b>SUB-HIMALAYAN WEST BENGAL</b>    |
|                      | <b>SIK</b>             | <b>SOUTH INTERIOR KARNATAKA</b>     |
|                      | <b>SKM</b>             | <b>SIKKIM</b>                       |
|                      | <b>TLNGN</b>           | <b>TELANGANA</b>                    |
|                      | <b>TN</b>              | <b>TAMIL NADU</b>                   |
|                      | <b>TRP</b>             | <b>TRIPURA</b>                      |
|                      | <b>UP</b>              | <b>UTTAR PRADESH</b>                |
|                      | <b>UTRKN D</b>         | <b>UTTARAKHAND</b>                  |
|                      | <b>VID</b>             | <b>VIDHARBHA</b>                    |
|                      | <b>SHWB</b>            | <b>SUB HIMALAYAN WEST BENGAL</b>    |
|                      | <b>GWB</b>             | <b>GANGETIC WEST BENGAL</b>         |
|                      | <b>ARSEA</b>           | <b>ARABIAN SEA</b>                  |
|                      | <b>ILS</b>             | <b>ISLANDS</b>                      |
| <b>MISCELLANEOUS</b> | <b>ASSW</b>            | <b>IN ASSOCIATION WITH</b>          |
|                      | <b>ASSTD</b>           | <b>ASSOCIATED</b>                   |
|                      | <b>LLC</b>             | <b>LOW LEVEL CIRCULATION</b>        |
|                      | <b>EMBDD</b>           | <b>EMBEDDED</b>                     |
|                      | <b>N/HOOD</b>          | <b>NEIGHBOURHOOD</b>                |
|                      | <b>EXT</b>             | <b>EXTREME</b>                      |