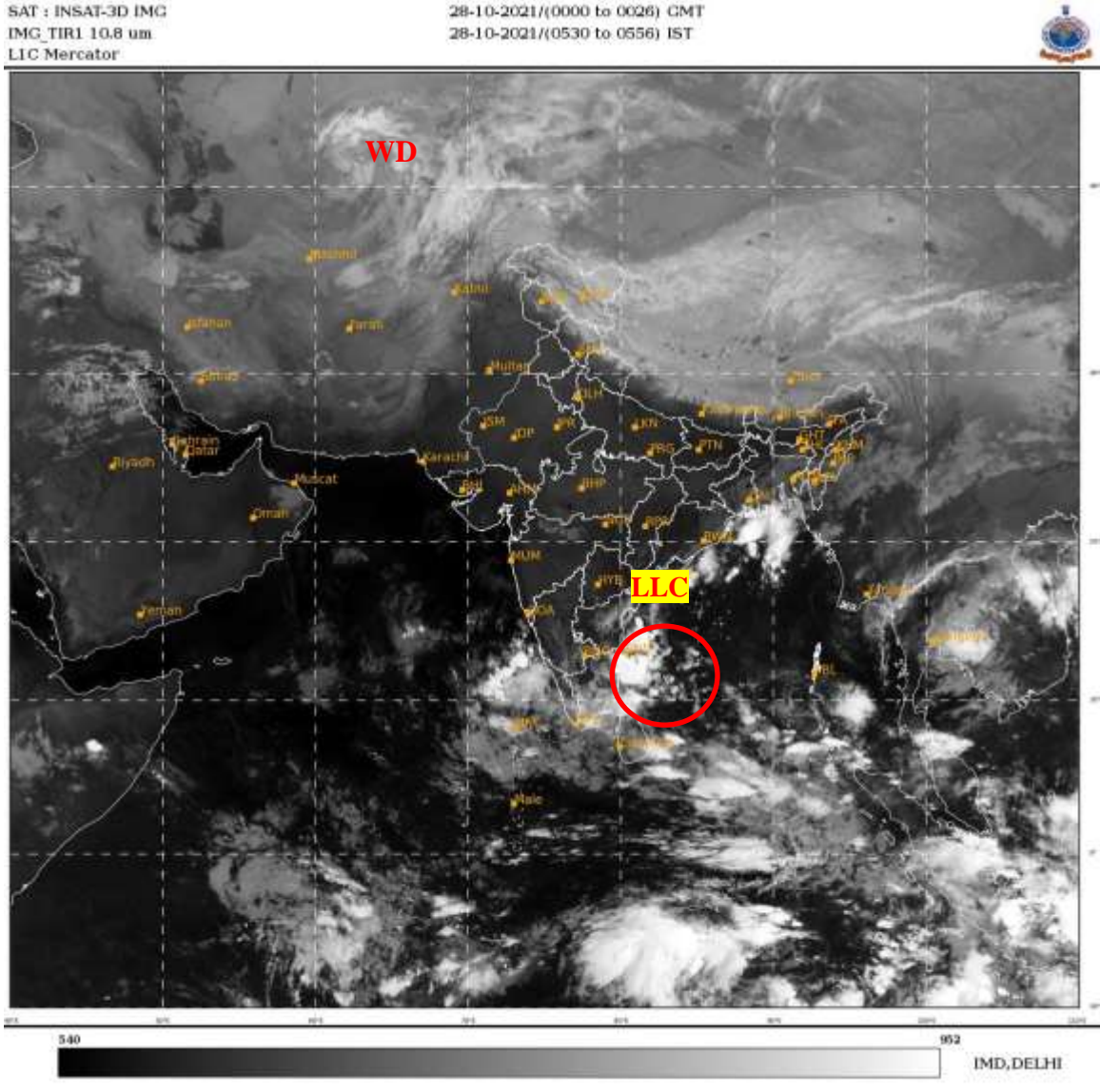




**SATELLITE BULLETIN BASED ON SATELLITE**  
**IMAGERIES AND PRODUCTS**  
**28.10.2021 TIME 0000 UTC**



TCIN50 DEMS 280000

SATELLITE BULLETIN BASED ON INSAT-3D PIC OF 280000 UTC (.)

REGION COVERED BETWEEN LAT 50.0°N TO 30.0°S AND LONG 40.0°E TO 125.0°E (.)

**SALIENT FEATURES:-**

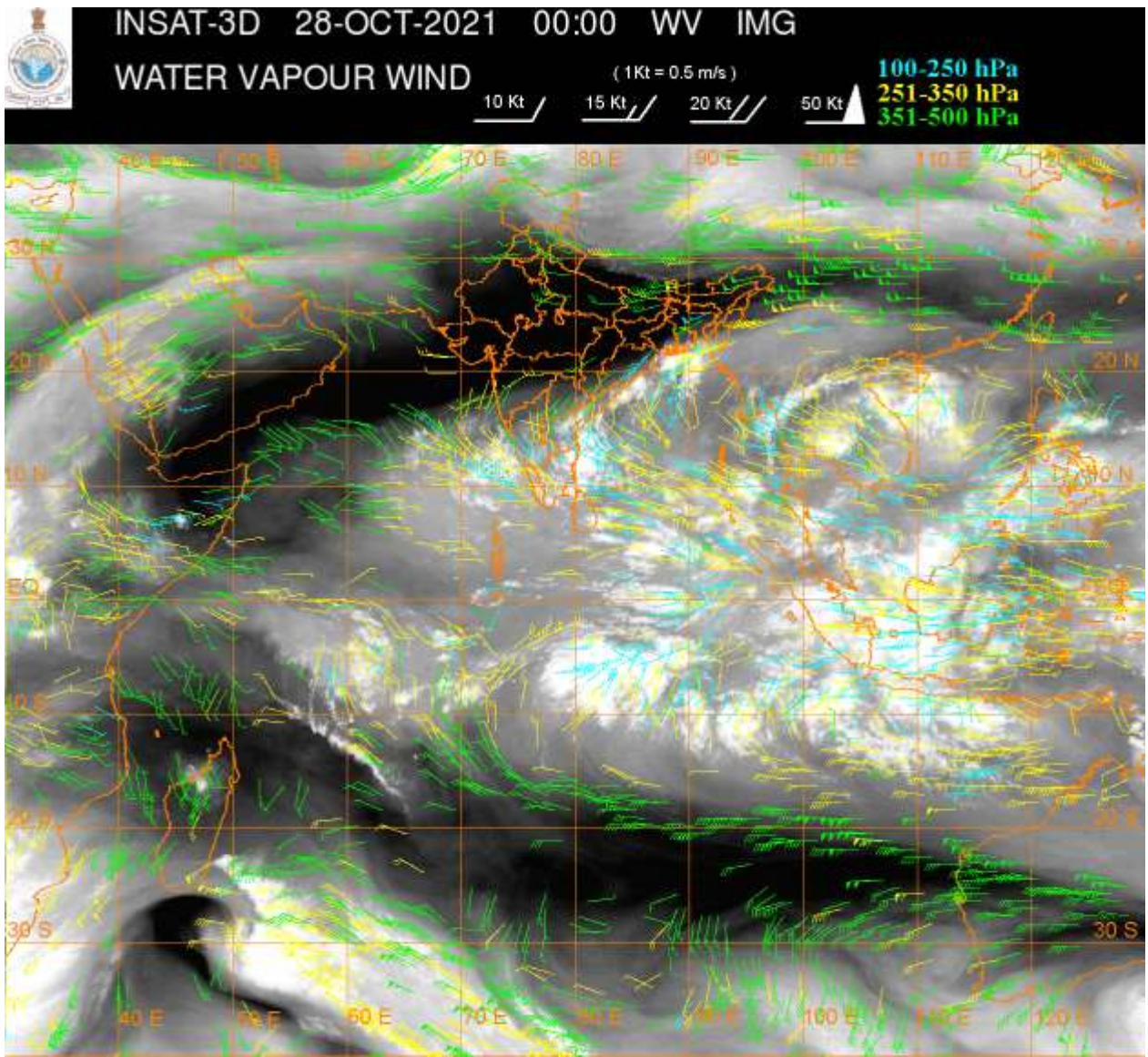
**LLC OVER SOUTH WEST BAY AND N/HOOD:-**

SCT LOW/MED CLOUDS WITH EMBDD INT TO V INT CONVTN OVER SW BAY & N/HOOD IN ASSW LOW LEVEL CIRCULATION (LLC) OVER THE AREA (.)

**WESTERN DISTURBANCE (WD):-**

SCT MULTILAYERED CLOUDS OVER E TURKMENISTAN ADJ AFGAN AND N/HOOD IN ASSW WD OVER THE AREA (.)

—



**CLOUDS DESCRIPTION WITHIN INDIA:-**

**NORTH:-**

SCT LOW/MED CLOUDS OVER LADAKH N HP N UTRKND (.)

**EAST:-**

SCT LOW/MED CLOUDS WITH EMBDD ISOL WK TO MOD CONVTN OVER EXT S GWB (.) SCT LOW/MED CLOUDS OVER REST S GWB MEGHA MANI MIZO TRP (.)

**WEST:-**

ISOL LOW/MED CLOUDS OVER N M MAHA (.)

**SOUTH:-**

SCT TO BKN LOW/MED CLOUDS WITH EMBDD MOD TO INT CONVTN OVER TN LKSDP ILS (.) SCT LOW/MED CLOUDS WITH EMBDD WK TO MOD CONVTN OVER S KER RYLSMA (.) SCT LOW/MED CLOUDS OVER S KRNTK (.)

**ARABIAN SEA:-**

SCT LOW/MED CLOUDS WITH EMBDD INT TO V INT CONVTN OVER SE ARSEA AND MOD TO INT CONVTN OVER COMORIN (.)

**BAY OF BENGAL & ANDAMAN SEA:-**

SCT LOW/MED CLOUDS WITH EMBDD INT TO V INT CONVTN OVER NW BAY ADJ WC BAY AND SOUTH WEST BAY (.) SCT LOW/MED CLOUDS WITH EMBDD MOD TO INT CONVTN OVER SE BAY S ANDAMAN SEA (.) SCT LOW/MED CLOUDS WITH EMBDD WK TO MOD CONVTN OVER NE BAY (.)

**CLOUDS DESCRIPTION OUTSIDE INDIA:-**

**SCT LOW/MED CLOUDS WITH EMBDD MOD TO INT CONVTN OVER SRI LANKA PALK STR GULF OF MANNAR MALDIVES TIBET CHINA MYANMAR THAILAND GULF OF THAILAND CAMBODIA LAOS VIETNAM GULF OF TONKIN HAINAN SUMATRA STR OF MALACCA MALAY PENINSULA BORNEO SOUTH CHINA SEA JAVA ILS & SEA CELEBES ILS & SEA PHILIPPINES SULU SEA C MADAGASCAR AND OVER INDIAN OCEAN BET LAT 5.0N TO 12.0S EAST OF LONG 55.0E (.)**

**TOO 28/0630EF=**

**NNNN**

**LEGEND:-**

|               |              |  |
|---------------|--------------|--|
| <b>REGION</b> | <b>NORTH</b> | <b>J&amp;K HP PJB HARY DLH UP UTRKND</b>                         |
|               | <b>EAST</b>  | <b>BHR JHRKND CHTGH ORS WB<br/>SKMNORTH- EAST STATES</b>         |
|               | <b>WEST</b>  | <b>RAJ MP GUJ MAHA GOA</b>                                       |
|               | <b>SOUTH</b> | <b>TLNGN AP KRNTK KER TN LKSDP<br/>ANDAMAN &amp; NICOBAR ILS</b> |

|   |                     |   |
|---|---------------------|---|
| <b>CLOUD DISTRIBUTION</b>   | <b>ISOL</b>         | <b>ISOLATED (LESS THAN 25%)</b>                             |
|   | <b>SCT</b>          | <b>SCATTERED (25 TO 50%)</b>                                |
|   | <b>BKN</b>          | <b>BROKEN (51 TO 75%)</b>                                   |
|   | <b>SLD</b>          | <b>SOLID (GREATER THAN 75%)</b>                             |
| <b>CLOUDS TOP TEMPERATURE</b>                                       | <b>CTT</b>          | <b>CLOUD TOP TEMPERATURE</b>                                |
| <b>CONVECTION</b>   | <b>WK CONVTN</b>    | <b>WEAK CONVECTION<br/>(CTT GREATER THAN -25°C)</b>         |
|   | <b>MOD CONVTN</b>   | <b>MODERATE CONVECTION<br/>(CTT BETWEEN -25°C TO -40°C)</b> |
|   | <b>INT CONVTN</b>   | <b>INTENSE CONVECTION<br/>(CTT BETWEEN -41°C TO -70°C)</b>  |
|   | <b>V INT CONVTN</b> | <b>VERY INTENSE CONVECTION<br/>(CTT LESS THAN -70°C)</b>    |
| <b>METEOROLOGICAL SUB-DIVISIONS, STATES &amp; UNION TERRITORIES</b> | <b>ARUPR</b>        | <b>ARUNACHAL PRADESH</b>                                    |
|   | <b>BHR</b>          | <b>BIHAR</b>  |
|   | <b>CHTGH</b>        | <b>CHHATTISGARH</b>   |
|   | <b>COTL AP</b>      | <b>COASTAL ANDHRA PRADESH</b>                               |
|   | <b>COTL KRNTK</b>   | <b>COASTAL KARNATAKA</b>                                    |
|   | <b>COTL ORS</b>     | <b>COASTAL ORISSA</b>                                       |
|   | <b>GUJ</b>          | <b>GUJARAT</b>  |
|   | <b>GWB</b>          | <b>GANGETIC WEST BENGAL</b>                                 |
|   | <b>HARY</b>         | <b>HARYANA</b>  |



|                      |                        |                                     |
|----------------------|------------------------|-------------------------------------|
|                      | <b>DLH</b>             | <b>DELHI</b>                        |
|                      | <b>HP</b>              | <b>HIMACHAL PRADESH</b>             |
|                      | <b>J&amp;K</b>         | <b>JAMMU AND KASHMIR</b>            |
|                      | <b>JHRKND</b>          | <b>JHARKHAND</b>                    |
|                      | <b>KER</b>             | <b>KERALA</b>                       |
|                      | <b>KKN</b>             | <b>KONKAN</b>                       |
|                      | <b>LKSDP</b>           | <b>LAKSHADWEEP</b>                  |
|                      | <b>M MAHA</b>          | <b>MADHYA MAHARASHTRA</b>           |
|                      | <b>MAHA</b>            | <b>MAHARASHTRA</b>                  |
|                      | <b>MANI</b>            | <b>MANIPUR</b>                      |
|                      | <b>MEGHA</b>           | <b>MEGHALAYA</b>                    |
|                      | <b>MIZO</b>            | <b>MIZORAM</b>                      |
|                      | <b>MP</b>              | <b>MADHYA PRADESH</b>               |
|                      | <b>MRTHWD</b>          | <b>MARATHWADA</b>                   |
|                      | <b>NAGA</b>            | <b>NAGALAND</b>                     |
|                      | <b>N COTL AP</b>       | <b>NORTH COASTAL ANDHRA PRADESH</b> |
|                      | <b>NIK</b>             | <b>NORTH INTERIOR KARNATAKA</b>     |
|                      | <b>ORS</b>             | <b>ORISSA</b>                       |
|                      | <b>PJB</b>             | <b>PUNJAB</b>                       |
|                      | <b>RAJ</b>             | <b>RAJASTHAN</b>                    |
|                      | <b>RYLSM</b>           | <b>RAYALASEEMA</b>                  |
|                      | <b>SAU &amp; KUTCH</b> | <b>SAURASHTRA &amp; KUTCH</b>       |
|                      | <b>SHWB</b>            | <b>SUB-HIMALAYAN WEST BENGAL</b>    |
|                      | <b>SIK</b>             | <b>SOUTH INTERIOR KARNATAKA</b>     |
|                      | <b>SKM</b>             | <b>SIKKIM</b>                       |
|                      | <b>TLNGN</b>           | <b>TELANGANA</b>                    |
|                      | <b>TN</b>              | <b>TAMIL NADU</b>                   |
|                      | <b>TRP</b>             | <b>TRIPURA</b>                      |
|                      | <b>UP</b>              | <b>UTTAR PRADESH</b>                |
|                      | <b>UTRKN</b>           | <b>UTTARAKHAND</b>                  |
|                      | <b>VID</b>             | <b>VIDHARBHA</b>                    |
|                      | <b>SHWB</b>            | <b>SUB HIMALAYAN WEST BENGAL</b>    |
|                      | <b>GWB</b>             | <b>GANGETIC WEST BENGAL</b>         |
|                      | <b>ARSEA</b>           | <b>ARABIAN SEA</b>                  |
|                      | <b>ILS</b>             | <b>ISLANDS</b>                      |
| <b>MISCELLANEOUS</b> | <b>ASSW</b>            | <b>IN ASSOCIATION WITH</b>          |
|                      | <b>ASSTD</b>           | <b>ASSOCIATED</b>                   |
|                      | <b>LLC</b>             | <b>LOW LEVEL CIRCULATION</b>        |
|                      | <b>EMBDD</b>           | <b>EMBEDDED</b>                     |
|                      | <b>N/HOOD</b>          | <b>NEIGHBOURHOOD</b>                |
|                      | <b>EXT</b>             | <b>EXTREME</b>                      |