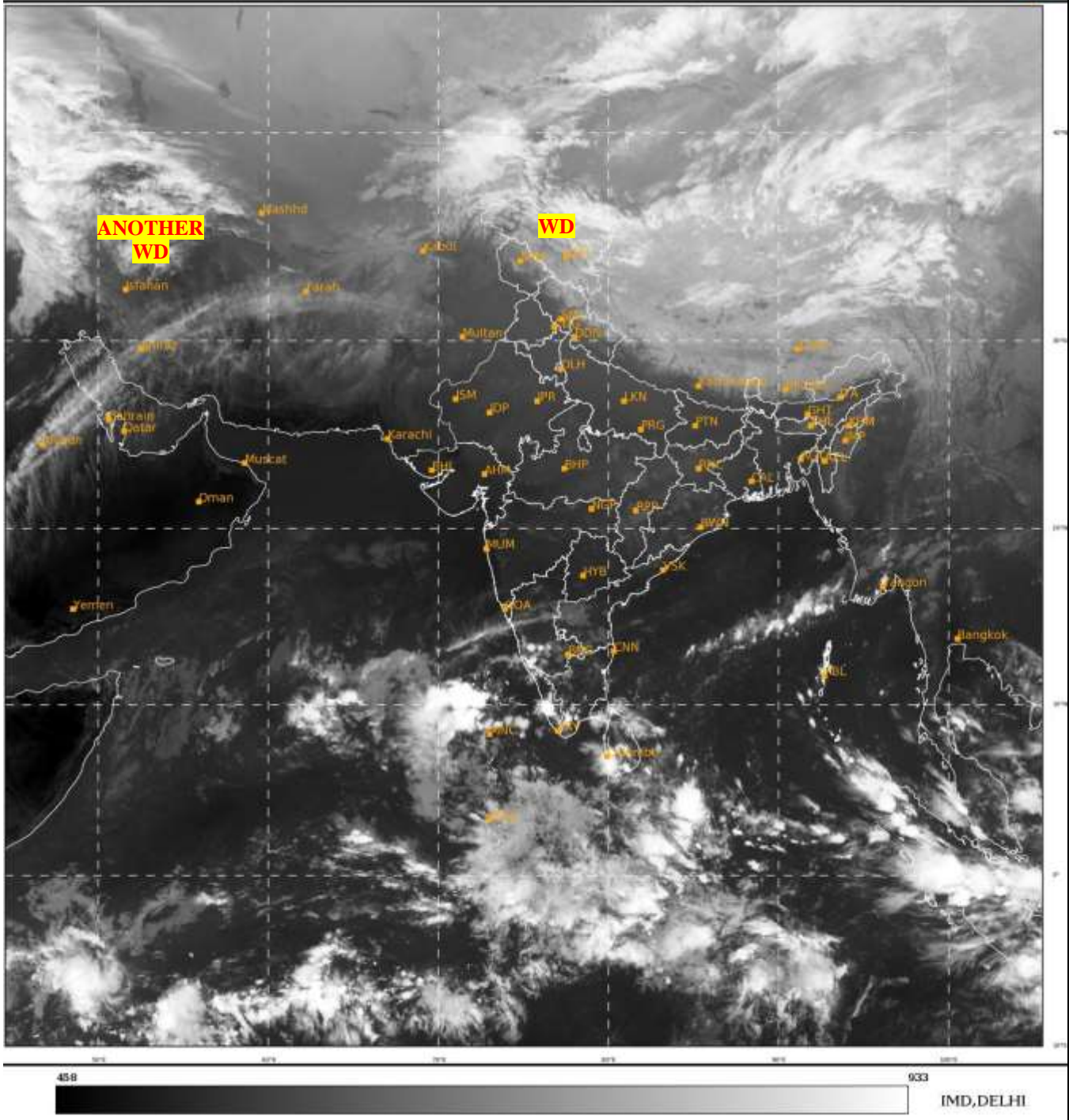




**SATELLITE BULLETIN BASED ON SATELLITE  
IMAGERIES AND PRODUCTS**  
**09.12.2023 TIME 1200 UTC**

SAT : INSAT-3D IMG  
IMG\_TIR1 10.8 um  
LIC Mercator

09-12-2023/(1200 to 1226) GMT  
09-12-2023/(1730 to 1756) IST



TCIN50 DEMS 091200

SATELLITE BULLETIN BASED ON INSAT-3D PIC OF 091200 UTC (.)

REGION COVERED BETWEEN LAT 50.0°N TO 35.0°S AND LONG 40.0°E TO 125.0°E (.)

**SALIENT FEATURES:-**

**WESTERN DISTURBANCE:-**

SCT MULTILAYERED CLOUDS OVER LADAKH TIBET ADJ CHINA IN ASSW **WD** OVER THE AREA (.)

SCT MULTILAYERED CLOUDS OVER CASPIAN SEA IRAN AND N/HOOD IN ASSW **ANOTHER WD** OVER THE AREA (.)

**CONVECTION OVER SE ARSEA ADJ LKSDP ILS & MALDIVES AREA:-**

SCT TO BKN LOW/MED CLOUDS WITH EMBDD INT TO V INT CONVTN OVER SE ARSEA ADJ LKSDP ILS & MALDIVES AREA PERSISTS (.) MINIMUM CTT **MINUS 85** DEG CEL (.)



INSAT-3D 09-DEC-2023 12:00 WV IMG

WATER VAPOUR WIND

(1Kt = 0.5 m/s)

10 Kt

15 Kt

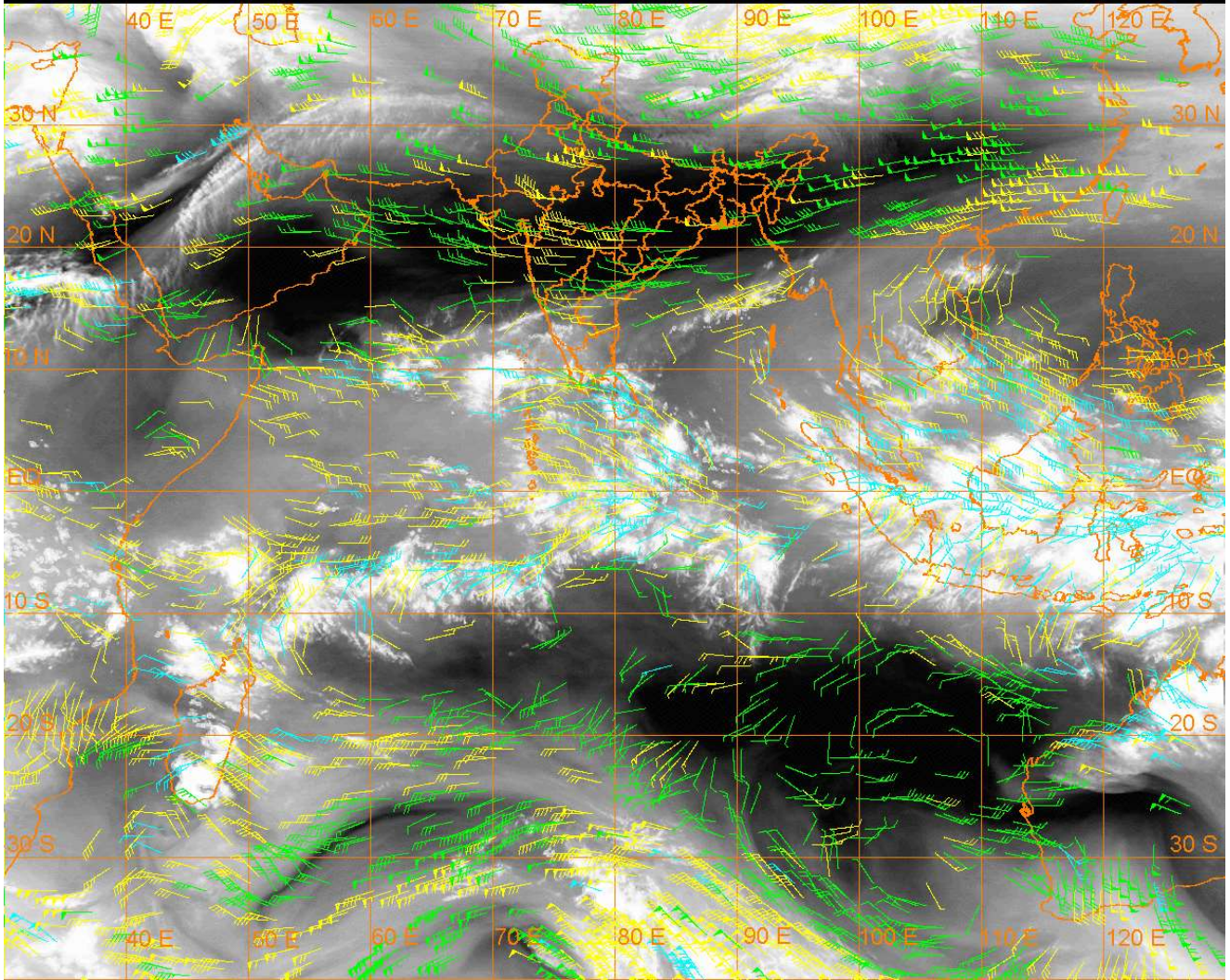
20 Kt

50 Kt

100-250 hPa

251-350 hPa

351-500 hPa



**CLOUDS DESCRIPTION WITHIN INDIA:-**

**NORTH:-**

SCT LOW/MED CLOUDS WITH EMBDD MOD TO INT CONVTN OVER LADAKH AND ISOL WK TO MOD CONVTN OVER J&K N HP N UTRKND (.) ISOL LOW/MED CLOUDS OVER S HP S UTRKND S UP (.)

**EAST:-**

SCT LOW/MED CLOUDS WITH EMBDD WK CONVTN OVER SKM ARUPR (.) SCT LOW/MED CLOUDS OVER S BHR JHRKND CHTGH ORS GWB SHWB REST NE STATES (.)

**WEST:-**

SCT LOW/MED CLOUDS OVER RAJ MP E GUJ MAHA GOA (.)

**SOUTH:-**

SCT LOW/MED CLOUDS WITH EMBDD MOD TO INT CONVTN OVER SW SIK KER S TN LKSDP ILS AND WK TO MOD CONVTN OVER REST KRNTK RYLSM N TN ANDAMAN & NICOBAR ILS (.) SCT LOW/MED CLOUDS OVER TLNGN COTL AP (.)

**ARABIAN SEA:-**

SCT LOW/MED CLOUDS WITH EMBDD INT TO V INT CONVTN OVER SE ARSEA ADJ LKSDP ILS AREA (.) SCT LOW/MED CLOUDS WITH EMBDD MOD TO INT CONVTN OVER SOUTH PARTS OF CENTRAL ARSEA REST SOUTH ARSEA AND COMORIN AREA (.)

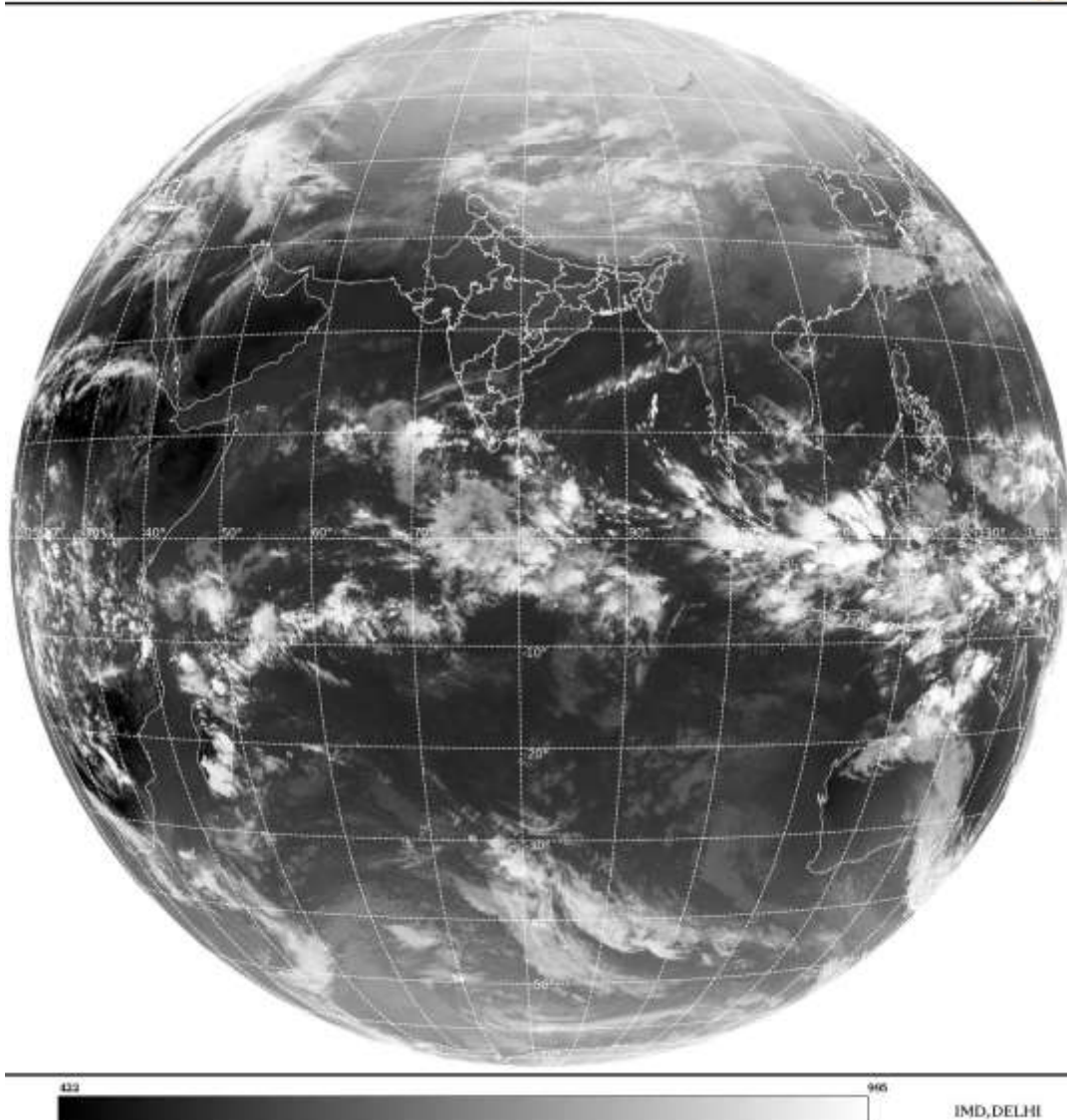
**BAY OF BENGAL & ANDAMAN SEA:-**

SCT LOW/MED CLOUDS WITH EMBDD MOD TO INT CONVTN OVER EC BAY SOUTH BAY ANDAMAN SEA AND ISOL WK TO MOD CONVTN OVER WC BAY (.)

**CLOUDS DESCRIPTION OUTSIDE INDIA:-**

SAT : INSAT-3D IMG  
Thermal Infrared1 Count 10.8 um  
L1B FULL DISK

09-12-2023/(1200 to 1226) GMT  
09-12-2023/(1730 to 1756) IST



**SCT LOW/MED CLOUDS WITH EMBDD MOD TO INT CONVTN OVER SRI LANKA PALK STR GULF OF MANNAR MALDIVES TIBET CHINA EAST CHINA SEA S MYANMAR THAILAND GULF OF THAILAND CAMBODIA S VIETNAM SUMATRA STR OF MALACCA MALAYSIA BORNEO SOUTH CHINA SEA JAVA ILS & SEA CELEBES ILS & SEA MADAGASCAR N MOZAMBIQUE CHANNEL AND OVER INDIAN OCEAN BET LAT 5.0N TO 10.0S LONG 40.0E TO 110.0E (.)**

**TOO 09/2030 HRS IST=**

**NNNN**

**LEGEND:-**

<b>REGION</b>	<b>NORTH</b>	<b>J&amp;K HP PJB HARY DLH UP UTRKND</b>
	<b>EAST</b>	<b>BHR JHRKND CHTGH OR WB SKM NORTH- EAST STATES</b>
	<b>WEST</b>	<b>RAJ MP GUJ MAHA GOA</b>
	<b>SOUTH</b>	<b>TLNGN AP KRNTK KER TN LKSDP ANDAMAN &amp; NICOBAR ILS</b>
<b>CLOUD DISTRIBUTION</b>	<b>ISOL</b>	<b>ISOLATED (LESS THAN 25%)</b>
	<b>SCT</b>	<b>SCATTERED (25 TO 50%)</b>
	<b>BKN</b>	<b>BROKEN (51 TO 75%)</b>
	<b>SLD</b>	<b>SOLID (GREATER THAN 75%)</b>
<b>CLOUDS TOP TEMPERATURE</b>	<b>CTT</b>	<b>CLOUD TOP TEMPERATURE</b>

<b>CONVECTION</b>	<b>WK CONVNTN</b>	<b>WEAK CONVECTION (CTT GREATER THAN -25°C)</b>	
	<b>MOD CONVNTN</b>	<b>MODERATE CONVECTION (CTT BETWEEN -25°C TO -40°C)</b>	
	<b>INT CONVNTN</b>	<b>INTENSE CONVECTION (CTT BETWEEN -41°C TO -70°C)</b>	
	<b>V INT CONVNTN</b>	<b>VERY INTENSE CONVECTION (CTT LESS THAN -70°C)</b>	
<b>METEOROLOGICAL SUB- DIVISIONS, STATES &amp; UNION TERITORIES</b>	<b>ARUPR</b>	<b>ARUNACHAL PRADESH</b>	
	<b>BHR</b>	<b>BIHAR</b>	
	<b>CHTGH</b>	<b>CHHATTISGARH</b>	
	<b>COTL AP</b>	<b>COASTAL ANDHRA PRADESH</b>	
	<b>COTL KRNTK</b>	<b>COASTAL KARNATAKA</b>	
	<b>COTL ORS</b>	<b>COASTAL ORISSA</b>	
	<b>GUJ</b>	<b>GUJARAT</b>	
	<b>GWB</b>	<b>GANGETIC WEST BENGAL</b>	
	<b>HARY</b>	<b>HARYANA</b>	
	<b>DLH</b>	<b>DELHI</b>	
	<b>HP</b>	<b>HIMACHAL PRADESH</b>	
	<b>J&amp;K</b>	<b>JAMMU AND KASHMIR</b>	
	<b>JHRKND</b>	<b>JHARKHAND</b>	
	<b>KER</b>	<b>KERALA</b>	
	<b>KKN</b>	<b>KONKAN</b>	
	<b>LKSDP</b>	<b>LAKSHADWEEP</b>	
	<b>M MAHA</b>	<b>MADHYA MAHARASHTRA</b>	
	<b>MAHA</b>	<b>MAHARASHTRA</b>	
	<b>MANI</b>	<b>MANIPUR</b>	
	<b>MEGHA</b>	<b>MEGHALAYA</b>	
	<b>MIZO</b>	<b>MIZORAM</b>	
	<b>MP</b>	<b>MADHYA PRADESH</b>	
		<b>MRTHWD</b>	<b>MARATHWADA</b>
		<b>NAGA</b>	<b>NAGALAND</b>
		<b>N COTL AP</b>	<b>NORTH COASTAL ANDHRA PRADESH</b>
		<b>NIK</b>	<b>NORTH INTERIOR KARNATAKA</b>
<b>ORS</b>		<b>ORISSA</b>	
<b>PJB</b>		<b>PUNJAB</b>	
<b>RAJ</b>		<b>RAJASTHAN</b>	
<b>RYLSM</b>		<b>RAYALASEEMA</b>	
<b>SAU &amp; KUTCH</b>		<b>SAURASHTRA &amp; KUTCH</b>	
<b>SHWB</b>		<b>SUB-HIMALAYAN WEST BENGAL</b>	
<b>SIK</b>		<b>SOUTH INTERIOR KARNATAKA</b>	
<b>SKM</b>		<b>SIKKIM</b>	
<b>TLNGN</b>		<b>TELANGANA</b>	
<b>TN</b>		<b>TAMIL NADU</b>	
<b>TRP</b>		<b>TRIPURA</b>	
<b>UP</b>		<b>UTTAR PRADESH</b>	
<b>UTRKND</b>		<b>UTTARAKHAND</b>	
<b>VID</b>		<b>VIDHARBHA</b>	

	<b>SHWB</b>	<b>SUB HIMALAYAN WEST BENGAL</b>
	<b>GWB</b>	<b>GANGETIC WEST BENGAL</b>
	<b>ARSEA</b>	<b>ARABIAN SEA</b>
	<b>ILS</b>	<b>ISLANDS</b>
<b>MISCELLANEOUS</b>	<b>ASSW</b>	<b>IN ASSOCIATION WITH</b>
	<b>ASSTD</b>	<b>ASSOCIATED</b>
	<b>LLC</b>	<b>LOW LEVEL CIRCULATION</b>
	<b>EMBDD</b>	<b>EMBEDDED</b>
	<b>N/HOOD</b>	<b>NEIGHBOURHOOD</b>
	<b>EXT</b>	<b>EXTREME</b>