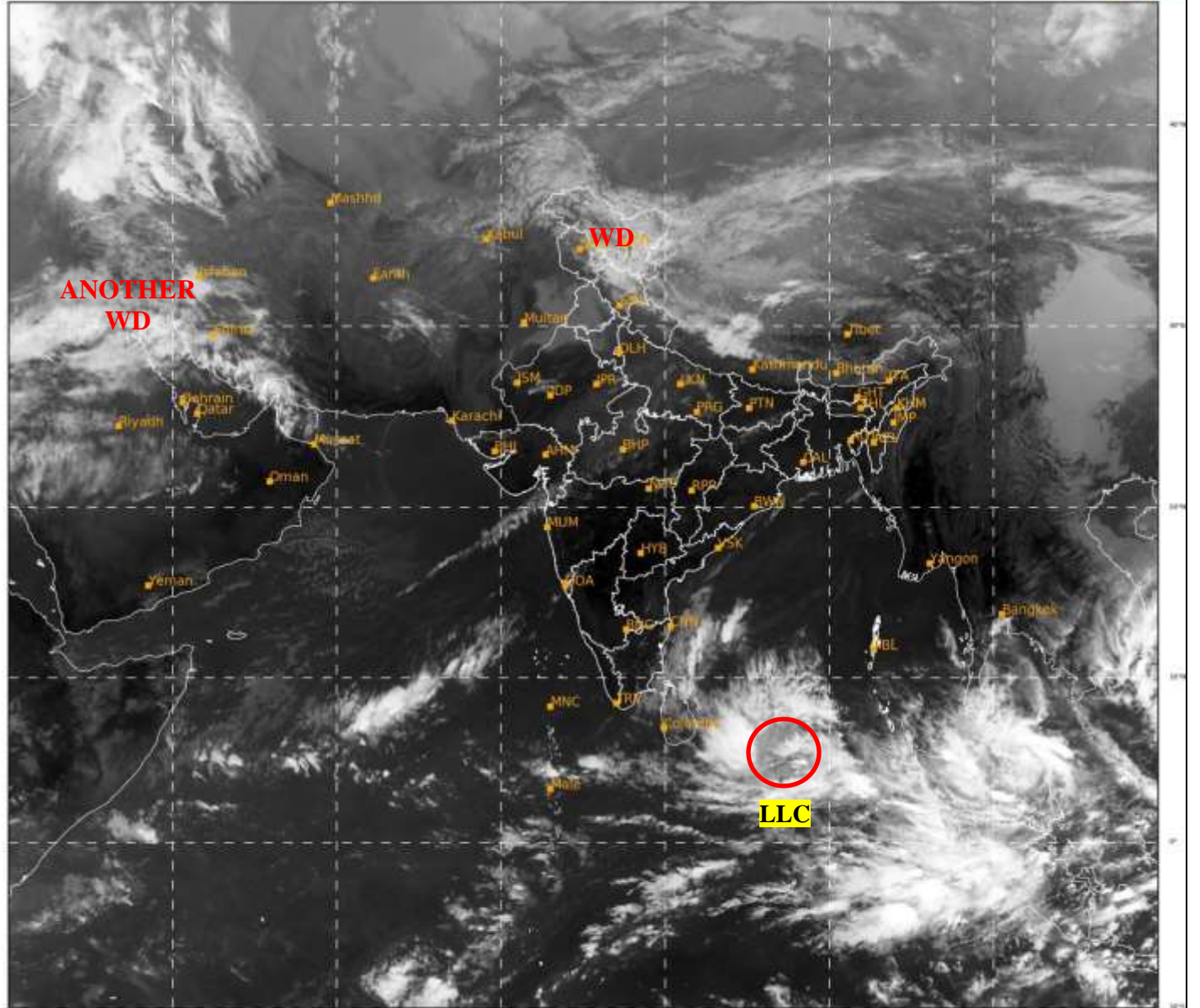




SATELLITE BULLETIN BASED ON SATELLITE
IMAGERIES AND PRODUCTS
17.12.2021 TIME 0600 UTC

SAT : INSAT-3D IMG
IMG_TIR1 10.8 um
LIC Mercator

17-12-2021/(0600 to 0627) GMT
17-12-2021/(1130 to 1157) IST



437

936

IMD, DELHI

TCIN50 DEMS 170600

SATELLITE BULLETIN BASED ON INSAT-3D PIC OF 170600 UTC (.)

REGION COVERED BETWEEN LAT 50.0°N TO 30.0°S AND LONG 40.0°E TO 125.0°E (.)

SALIENT FEATURES:-

WESTERN DISTURBANCE (WD):-

SCT MULTILAYERED CLOUDS OVER J&K LADAKH AND N/HOOD IN ASSW **WD** OVER THE AREA (.)

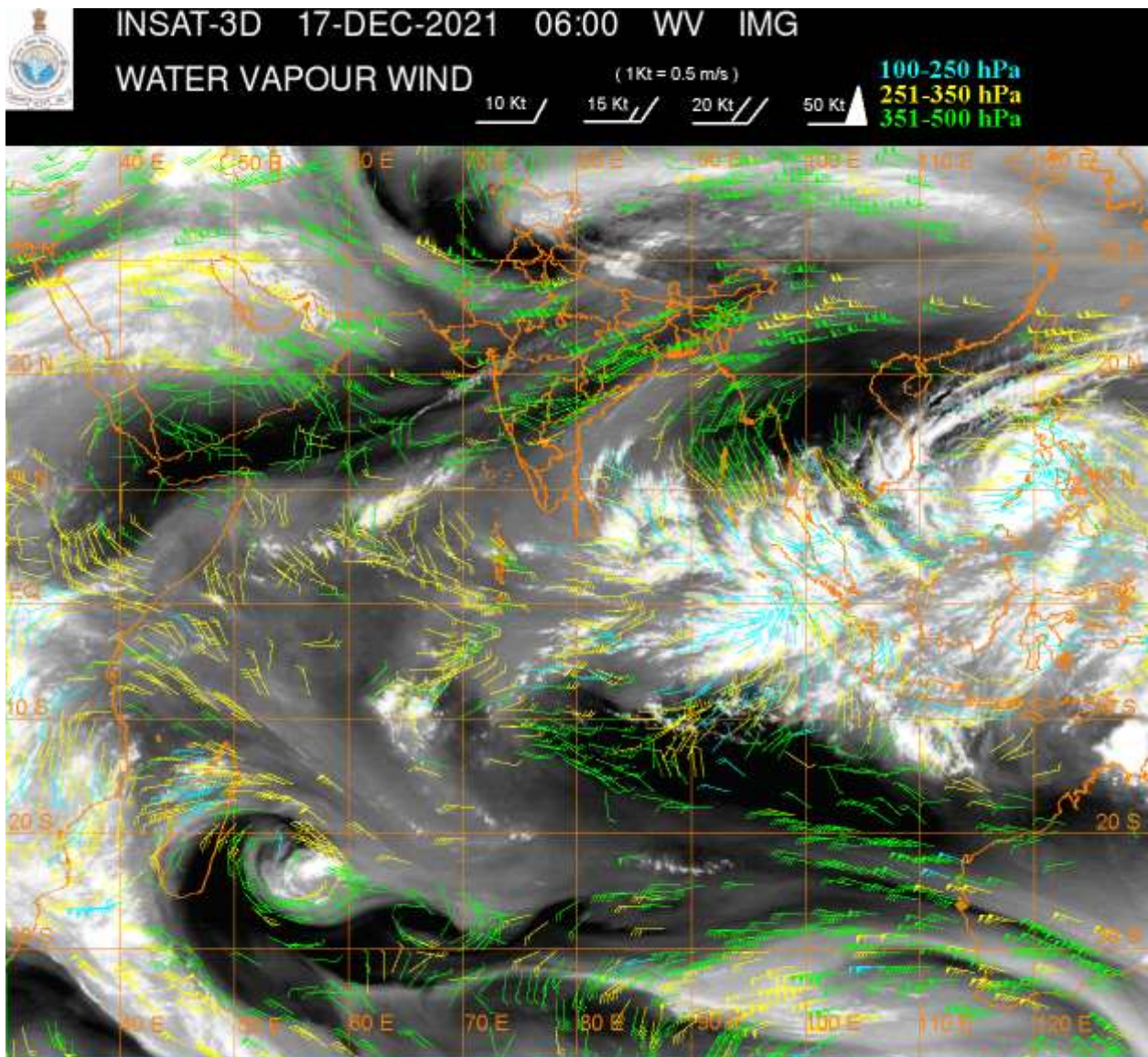
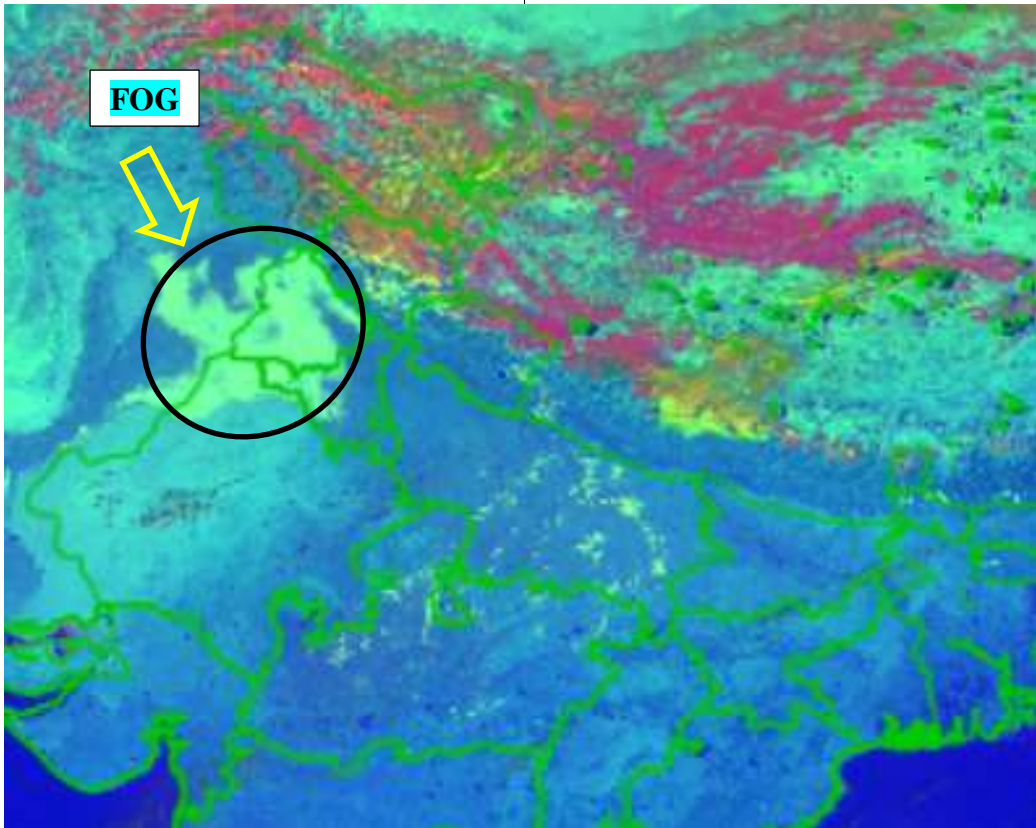
SCT MULTILAYERED CLOUDS OVER PERSIAN GULF SW IRAN AND N/HOOD IN ASSW **ANOTHER WD** OVER THE AREA (.)

LLC OVER SOUTH BAY ADJ EQUATORIAL INDIAN OCEAN:-

SCT LOW/MED CLOUDS WITH EMBDD INT TO V INT CONVTN OVER CENTRAL PARTS OF SOUTH BAY ADJ EQUATORIAL INDIAN OCEAN IN ASSW LOW LEVEL CIRCULATION OVER THE AREA (.) MINIMUM CTT MINUS **73** DEG C (.)

FOG/LOW CLOUDS:-

INSAT-3D DAY MICROPHYSICS PRODUCT AT 0600 UTC INDICATES SCT FOG/LOW CLOUDS OVER PJB W HARY NW RAJ ADJ E PAK PERSISTS (.)



CLOUDS DESCRIPTION WITHIN INDIA:-

NORTH:-

SCT LOW/MED CLOUDS WITH EMBDD WK TO MOD CONVTN OVER LADAKH E J&K N HP EXT N UTRKND (.) SCT LOW/MED CLOUDS OVER S HP UP (.)

EAST:-

SCT LOW/MED CLOUDS WITH EMBDD ISOL WK CONVTN OVER SKM ARUPR (.) ISOL LOW/MED CLOUDS OVER N JHRKND SE BHR SHWB REST NE STATES (.)

WEST:-

SCT LOW/MED CLOUDS WITH EMBDD WK CONVTN OVER SE GUJ C RAJ (.) ISOL TO SCT LOW/MED CLOUDS OVER MP MAHA (.)

SOUTH:-

ISOL TO SCT LOW/MED CLOUDS OVER S COTL AP TN S ANDAMAN & NICOBAR ILS (.)

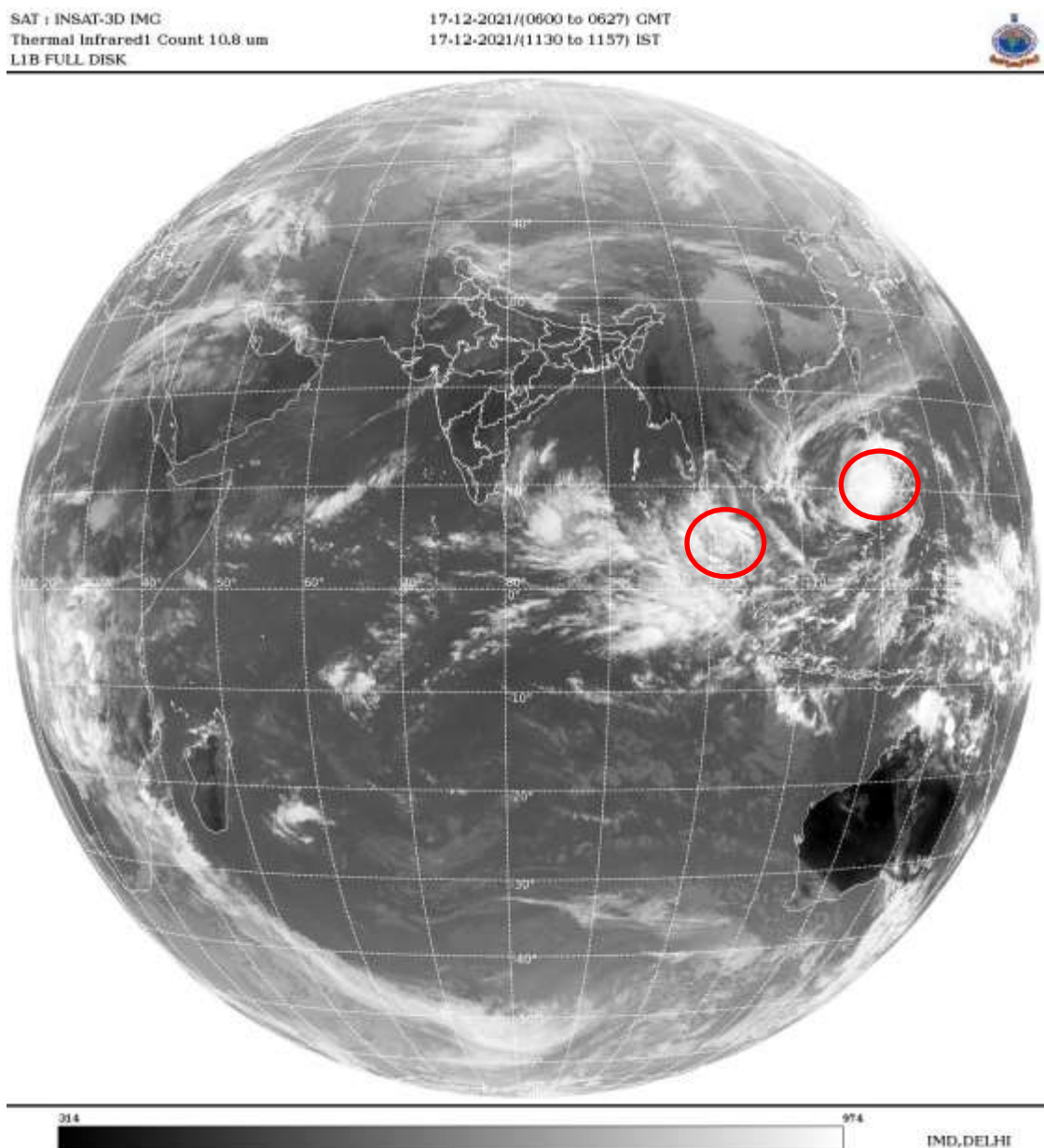
ARABIAN SEA:-

SCT LOW/MED CLOUDS WITH EMBDD MOD TO INT CONVTN OVER SC ARSEA (.) SCT LOW/MED CLOUDS WITH EMBDD WK TO MOD CONVTN OVER EC ARSEA (.)

BAY OF BENGAL & ANDAMAN SEA:-

SCT TO BKN LOW/MED CLOUDS WITH EMBDD INT TO V INT CONVTN OVER SW ADJ SE BAY SOUTH OF LAT 10.0N AND MOD TO INT CONVTN OVER REST SOUTH BAY (.) SCT LOW/MED CLOUDS WITH EMBDD WK TO MOD CONVTN OVER S ANDAMAN SEA (.)

CLOUDS DESCRIPTION OUTSIDE INDIA:-



VORTEX (RAI) OVER SULU SEA & N/HOOD:-

VORTEX (RAI) OVER SULU SEA & N/HOOD CENTERED NEAR **10.3N / 120.3E** (.) INTENSITY **T5.0/5.5** (.) ASSTD BKN LOW/MED CLOUDS WITH EMBDD INT TO V INT CONVTN OVER AREA BET LAT 6.0N TO 15.5N LONG 114.5E TO 125.0E AND PHILIPPINES (.)

ANOTHER VORTEX OVER MALAYSIA & N/HOOD:-

VORTEX OVER MALAYSIA & N/HOOD (.) CENTER NOT CLEARLY DEFINED IN INSAT IMAGERY (.) **OVERLAND (.) ASSTD BKN LOW/MED CLOUDS WITH EMBDD INT TO V INT CONVTN OVER MALAY PENINSULA STR OF MALACCA & N/HOOD (.)**

SCT LOW/MED CLOUDS WITH EMBDD MOD TO INT CONVTN OVER N SRI LANKA PALK STR GULF OF MANNAR MALDIVES NEPAL TIBET CHINA S VIETNAM GULF OF THAILAND SUMATRA STR OF MALACCA MALAYSIA SOUTH CHINA SEA BORNEO JAVA ILS & SEA CELEBES ILS & SEA PHILIPPINES SULU SEA CHANNEL AND OVER INDIAN OCEAN BET LAT 5.0N TO 14.5S LONG 46.0E TO 115.0E (.)

TOO 17/1245EF=

NNNN

LEGEND:-

REGION	NORTH	J&K HP PJB HARY DLH UP UTRKND
	EAST	BHR JHRKND CHTGH ORS WB SKM NORTH- EAST STATES
	WEST	RAJ MP GUJ MAHA GOA
	SOUTH	TLNGN AP KRNTK KER TN LKSDP ANDAMAN & NICOBAR ILS

CLOUD DISTRIBUTION	ISOL	ISOLATED (LESS THAN 25%)
	SCT	SCATTERED (25 TO 50%)
	BKN	BROKEN (51 TO 75%)
	SLD	SOLID (GREATER THAN 75%)
CLOUDS TOP TEMPERATURE	CTT	CLOUD TOP TEMPERATURE
CONVECTION	WK CONVTN	WEAK CONVECTION (CTT GREATER THAN -25°C)
	MOD CONVTN	MODERATE CONVECTION (CTT BETWEEN -25°C TO -40°C)
	INT CONVTN	INTENSE CONVECTION (CTT BETWEEN -41°C TO -70°C)
	V INT CONVTN	VERY INTENSE CONVECTION (CTT LESS THAN -70°C)
METEOROLOGICAL SUB-DIVISIONS, STATES & UNION TERRITORIES	ARUPR	ARUNACHAL PRADESH
	BHR	BIHAR
	CHTGH	CHHATTISGARH
	COTL AP	COASTAL ANDHRA PRADESH
	COTL KRNTK	COASTAL KARNATAKA
	COTL ORS	COASTAL ORISSA
	GUJ	GUJARAT
	GWB	GANGETIC WEST BENGAL
	HARY	HARYANA
	DLH	DELHI

	HP	HIMACHAL PRADESH
	J&K	JAMMU AND KASHMIR
	JHRKND	JHARKHAND
	KER	KERALA
	KKN	KONKAN
	LKSDP	LAKSHADWEEP
	M MAHA	MADHYA MAHARASHTRA
	MAHA	MAHARASHTRA
	MANI	MANIPUR
	MEGHA	MEGHALAYA
	MIZO	MIZORAM
	MP	MADHYA PRADESH
	MRTHWD	MARATHWADA
	NAGA	NAGALAND
	N COTL AP	NORTH COASTAL ANDHRA PRADESH
	NIK	NORTH INTERIOR KARNATAKA
	ORS	ORISSA
	PJB	PUNJAB
	RAJ	RAJASTHAN
	RYLSM	RAYALASEEMA
	SAU & KUTCH	SAURASHTRA & KUTCH
	SHWB	SUB-HIMALAYAN WEST BENGAL
	SIK	SOUTH INTERIOR KARNATAKA
	SKM	SIKKIM
	TLNGN	TELANGANA
	TN	TAMIL NADU
	TRP	TRIPURA
	UP	UTTAR PRADESH
	UTRKN	UTTARAKHAND
	VID	VIDHARBHA
	SHWB	SUB HIMALAYAN WEST BENGAL
	GWB	GANGETIC WEST BENGAL
	ARSEA	ARABIAN SEA
	ILS	ISLANDS
MISCELLANEOUS	ASSW	IN ASSOCIATION WITH
	ASSTD	ASSOCIATED
	LLC	LOW LEVEL CIRCULATION
	EMBDD	EMBEDDED
	N/HOOD	NEIGHBOURHOOD
	EXT	EXTREME