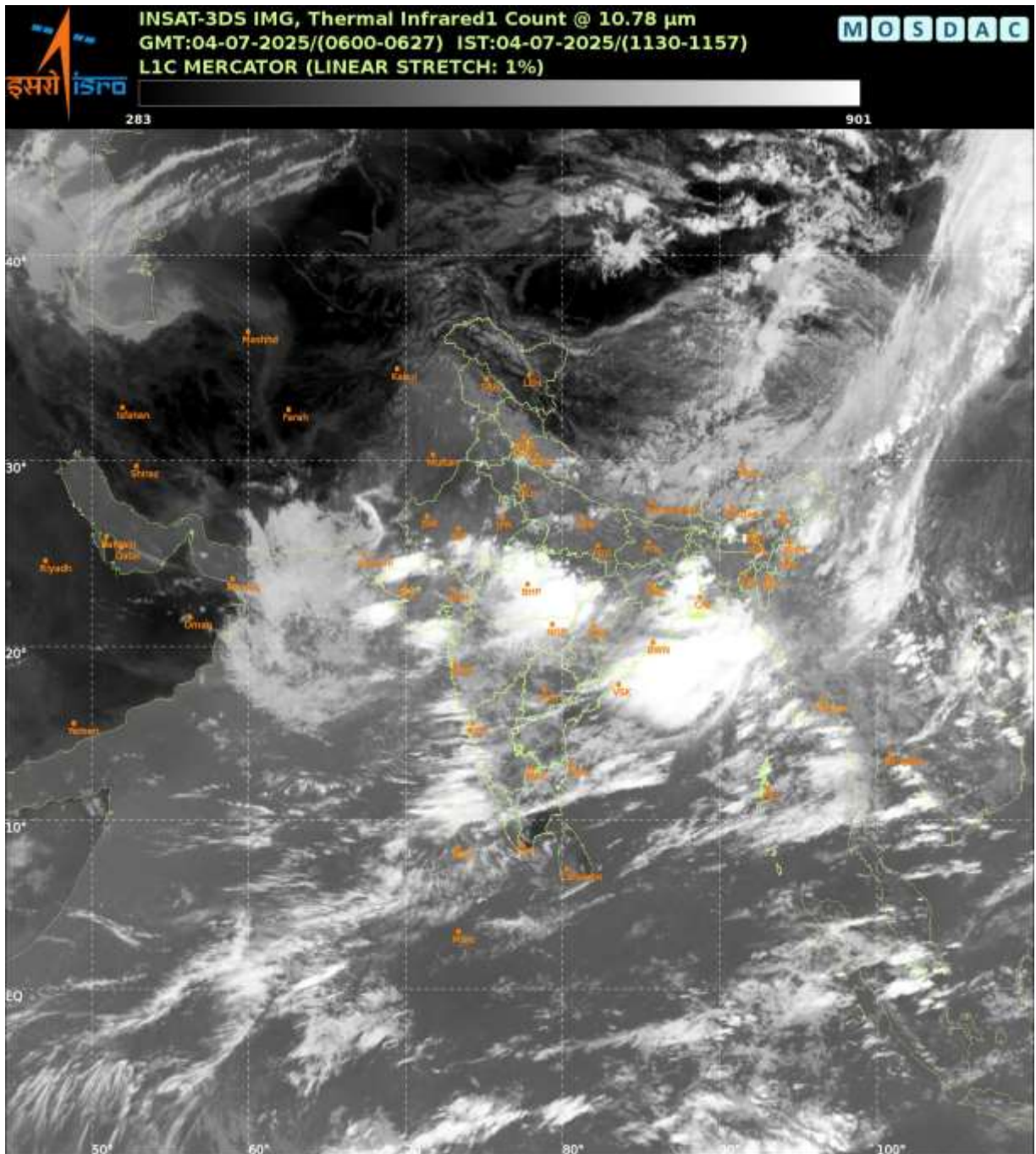




भारत मौसम विज्ञान विभाग  
पृथ्वी विज्ञान मंत्रालय  
India Meteorological Department  
Ministry of Earth Sciences



**SATELLITE BULLETIN BASED ON SATELLITE  
IMAGERIES AND PRODUCTS**  
**04.07.2025 TIME 0600 UTC**



TCIN50 DEMS 040600

SATELLITE BULLETIN BASED ON INSAT-3DS PIC OF 040600 UTC (.)

REGION COVERED BETWEEN LAT 50.0°N TO 35.0°S AND LONG 40.0°E TO 125.0°E (.)

**SALIENT FEATURES:-**

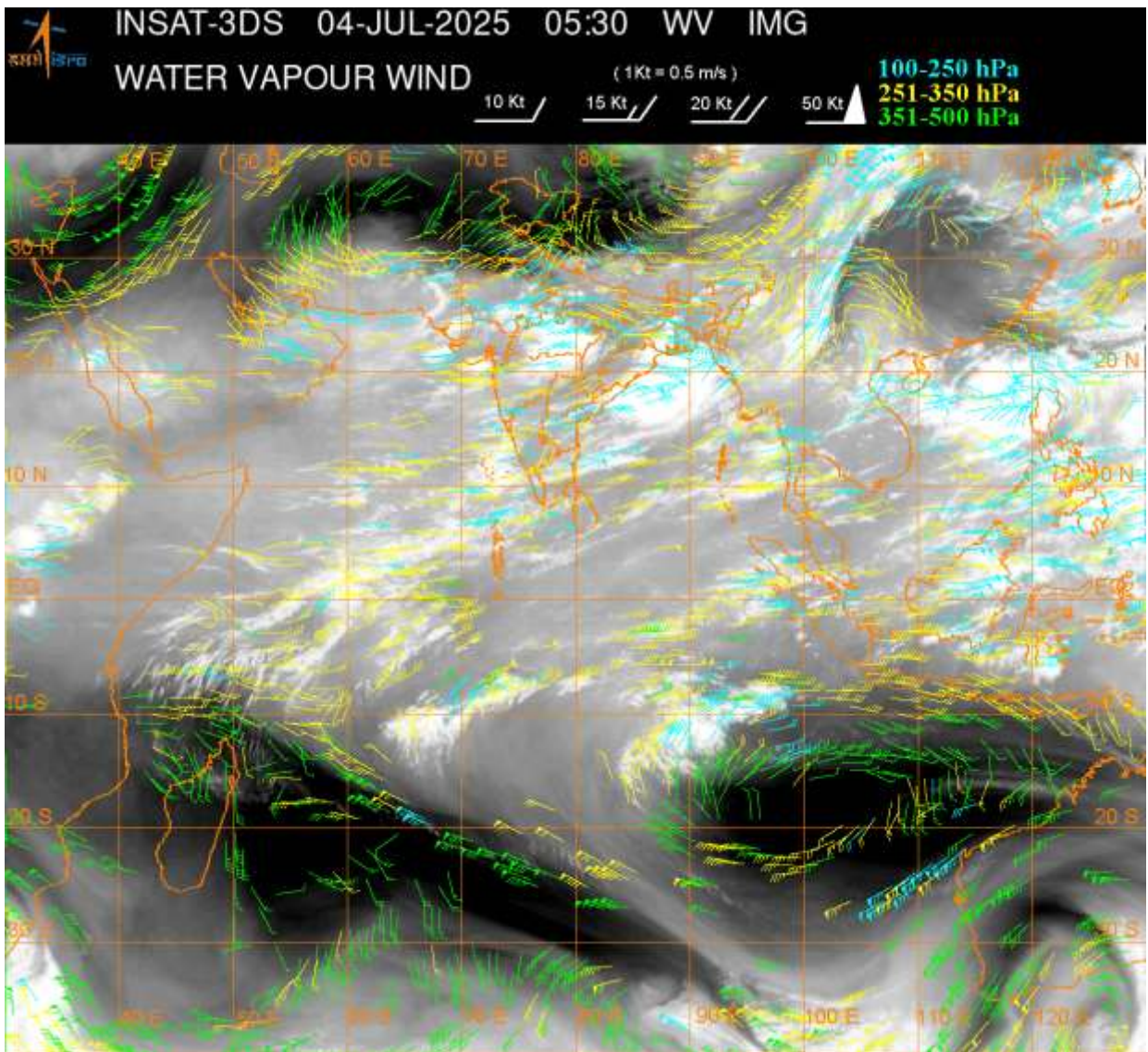
**CONVECTION OVER NORTH BAY ADJ COTL GWB AND N/HOOD :-**

INTENSE TO VERY INTENSE CONVECTION OVER NORTH BAY ADJ COTL GWB AND N/HOOD PERSISTS DURING PAST 12 HRS (MINIMUM **CTT MINUS 70-90 DEG CEL**) (.)

**CONVECTIVE / THUNDERSTORM ACTIVITY:-**

INTENSE TO VERY INTENSE CONVECTIVE / THUNDERSTORM ACTIVITY OBSERVED OVER SE RAJ MP N VID N CHTGH COTL ORS GWB N COTL AP (MINIMUM **CTT MINUS 70-80 DEG CEL**) (.)

MODERATE TO INTENSE CONVECTIVE / THUNDERSTORM ACTIVITY OBSERVED OVER UTRKND S CHTGH REST ORS S KKN GOA GUJ COTL KRNTK N TN ARUPR ASSAM NAGA LKSDP ILS AREA (MINIMUM **CTT MINUS 40-70 DEG CEL**) (.)



**CLOUDS DESCRIPTION WITHIN INDIA:-**

**NORTH:-**

SCT LOW/MED CLOUDS WITH EMBDD ISOL MOD TO INT CONVTN OVER UTRKND UP AND ISOL WK TO MOD CONVTN OVER LADAKH J&K HP PJB HARY DLH (.)

**EAST:-**

SCT TO BKN LOW/MED CLOUDS WITH EMBDD INT TO V INT CONVTN OVER N CHTGH GWB COTL ORS S BD (.) SCT LOW/MED CLOUDS WITH EMBDD MOD TO INT CONVTN OVER S CHTGH REST ORS ARUPR ASSAM NAGA AND WK TO MOD CONVTN OVER BHR JHRKND SHWB SKM REST NE STATES (.)

**WEST:-**

SCT TO BKN LOW/MED CLOUDS WITH EMBDD INT TO V INT CONVTN OVER SE RAJ MP N VID (.) SCT LOW/MED CLOUDS WITH EMBDD MOD TO INT CONVTN OVER GUJ REST MAHA GOA AND ISOL WK TO MOD CONVTN OVER REST RAJ (.)

**SOUTH:-**

SCT TO BKN LOW/MED CLOUDS WITH EMBDD MOD TO INT CONVTN OVER KRNTK TLNGN RYLSM N COTL AP KER N TN LKSDP ILS AREA (.) SCT LOW/MED CLOUDS WITH EMBDD WK TO MOD CONVTN OVER S COTL AP S TN ANDAMAN & NICOBAR ILS AREA (.)

**ARABIAN SEA:-**

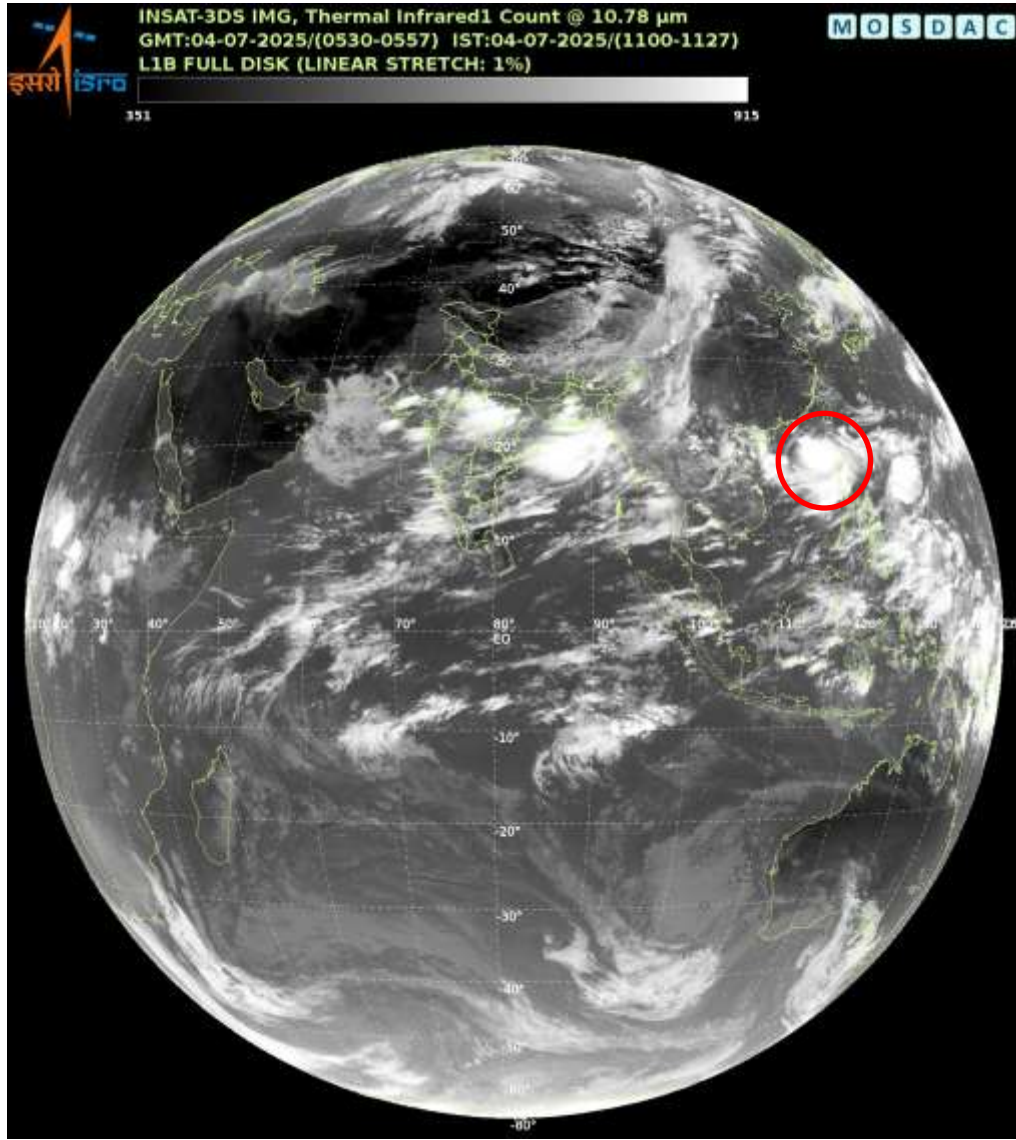
SCT LOW/MED CLOUDS WITH EMBDD MOD TO INT CONVTN OVER ARSEA LKSDP ILS AREA MALDIVES & COMORIN AREA (.)

**BAY OF BENGAL & ANDAMAN SEA:-**

SCT TO BKN LOW/MED CLOUDS WITH EMBDD INT TO V INT CONVTN OVER NORTH ADJ CENTRAL BAY AND NORTH ANDAMAN SEA (.) SCT LOW/MED CLOUDS WITH EMBDD MOD TO INT CONVTN OVER REST BAY AND ISOL WK TO MOD CONVTN OVER SOUTH ANDAMAN SEA (.)



**CLOUDS DESCRIPTION OUTSIDE INDIA:-**



**VORTEX OVER SOUTH CHINA SEA AND N/HOOD:-**

**VORTEX OVER SOUTH CHINA SEA AND N/HOOD (AREA F05) CENTERED NEAR 19.4N/117.7E (.) INTENSITY T2.5/2.5 (.) MAXIMUM SUSTAINED WINDS 28-33 KTS (.) ASSTD INT TO V INT CONVTN OVER AREA BET LAT 15.0N TO 21.0 N LONG 115.0E TO 121.0E (.)**

**SCT LOW/MED CLOUDS WITH EMBDD MOD TO INT CONVTN OVER MALDIVES S PAK NEPAL BHUTAN TIBET CHINA YELLOW SEA EAST CHINA SEA MYANMAR THAILAND GULF OF THAILAND CAMBODIA LAOS VIETNAM GULF OF TONKIN HAINAN SUMATRA STR OF MALACCA MALAYSIA BORNEO SOUTH CHINA SEA JAVA ILS & SEA CELEBES ILS & SEA PHILIPPINES SULU SEA AND OVER INDIAN OCEAN BET LAT 5.0N TO 15.0S LONG 40.0E TO 100.0E (.)**

**TOO 04/1240 EF=**

**NNNN**

**LEGEND:-**

|               |              |  |
|---------------|--------------|--|
| <b>REGION</b> | <b>NORTH</b> | <b>J&amp;K HP PJB HARY DLH UP UTRKND</b>                     |
|               | <b>EAST</b>  | <b>BHR JHRKND CHTGH ORS WB SKM NORTH- EAST STATES</b>        |
|               | <b>WEST</b>  | <b>RAJ MP GUJ MAHA GOA</b>                                   |
|               | <b>SOUTH</b> | <b>TLNGN AP KRNTK KER TN LKSDP ANDAMAN &amp; NICOBAR ILS</b> |

|  |                     |   |                   |
|--|---------------------|---|-------------------|
| <b>CLOUD DISTRIBUTION</b>  | <b>ISOL</b>         | <b>ISOLATED (LESS THAN 25%)</b>                         |                   |
|  | <b>SCT</b>          | <b>SCATTERED (25 TO 50%)</b>                            |                   |
|  | <b>BKN</b>          | <b>BROKEN (51 TO 75%)</b>                               |                   |
|  | <b>SLD</b>          | <b>SOLID (GREATER THAN 75%)</b>                         |                   |
| <b>CLOUDS TOP TEMPERATURE</b>  | <b>CTT</b>          | <b>CLOUD TOP TEMPERATURE</b>                            |                   |
| <b>CONVECTION</b>  | <b>WK CONVTN</b>    | <b>WEAK CONVECTION (CTT GREATER THAN -25°C)</b>         |                   |
|  | <b>MOD CONVTN</b>   | <b>MODERATE CONVECTION (CTT BETWEEN -25°C TO -40°C)</b> |                   |
|  | <b>INT CONVTN</b>   | <b>INTENSE CONVECTION (CTT BETWEEN -41°C TO -70°C)</b>  |                   |
|  | <b>V INT CONVTN</b> | <b>VERY INTENSE CONVECTION (CTT LESS THAN -70°C)</b>    |                   |
| <b>METEOROLOGICAL SUB- DIVISIONS, STATES &amp; UNION TERRITORIES</b> | <b>ARUPR</b>        | <b>ARUNACHAL PRADESH</b>                                |                   |
|  | <b>BHR</b>          | <b>BIHAR</b>  |                   |
|  | <b>CHTGH</b>        | <b>CHHATTISGARH</b>                                     |                   |
|  | <b>COTL AP</b>      | <b>COASTAL ANDHRA PRADESH</b>                           |                   |
|  | <b>COTL KRNTK</b>   | <b>COASTAL KARNATAKA</b>                                |                   |
|  | <b>COTL ORS</b>     | <b>COASTAL ORISSA</b>                                   |                   |
|  | <b>GUJ</b>          | <b>GUJARAT</b>  |                   |
|  | <b>GWB</b>          | <b>GANGETIC WEST BENGAL</b>                             |                   |
|  | <b>HARY</b>         | <b>HARYANA</b>  |                   |
|  | <b>DLH</b>          | <b>DELHI</b>  |                   |
|  | <b>HP</b>           | <b>HIMACHAL PRADESH</b>                                 |                   |
|  | <b>J&amp;K</b>      | <b>JAMMU AND KASHMIR</b>                                |                   |
|  | <b>JHRKND</b>       | <b>JHARKHAND</b>  |                   |
|  | <b>KER</b>          | <b>KERALA</b>   |                   |
|  | <b>KKN</b>          | <b>KONKAN</b>   |                   |
|  | <b>LKSDP</b>        | <b>LAKSHADWEEP</b>                                      |                   |
|  | <b>M MAHA</b>       | <b>MADHYA MAHARASHTRA</b>                               |                   |
|  | <b>MAHA</b>         | <b>MAHARASHTRA</b>                                      |                   |
|  | <b>MANI</b>         | <b>MANIPUR</b>  |                   |
|  | <b>MEGHA</b>        | <b>MEGHALAYA</b>  |                   |
|  | <b>MIZO</b>         | <b>MIZORAM</b>  |                   |
|  | <b>MP</b>           | <b>MADHYA PRADESH</b>                                   |                   |
|  |                     | <b>MRTHWD</b>   | <b>MARATHWADA</b> |
|  |                     | <b>NAGA</b>   | <b>NAGALAND</b>   |
| <b>N COTL AP</b>   |                     | <b>NORTH COASTAL ANDHRA PRADESH</b>                     |                   |
| <b>NIK</b>   |                     | <b>NORTH INTERIOR KARNATAKA</b>                         |                   |
| <b>ORS</b>   |                     | <b>ORISSA</b>   |                   |
| <b>PJB</b>   |                     | <b>PUNJAB</b>   |                   |
| <b>RAJ</b>   |                     | <b>RAJASTHAN</b>  |                   |
| <b>RYLSM</b>   |                     | <b>RAYALASEEMA</b>                                      |                   |
| <b>SAU &amp; KUTCH</b>   |                     | <b>SAURASHTRA &amp; KUTCH</b>                           |                   |
| <b>SHWB</b>  |                     | <b>SUB-HIMALAYAN WEST BENGAL</b>                        |                   |
| <b>SIK</b>   |                     | <b>SOUTH INTERIOR KARNATAKA</b>                         |                   |
| <b>SKM</b>   |                     | <b>SIKKIM</b>   |                   |

|                      |               |                                  |
|----------------------|---------------|----------------------------------|
|                      | <b>TLNGN</b>  | <b>TELANGANA</b>                 |
|                      | <b>TN</b>     | <b>TAMIL NADU</b>                |
|                      | <b>TRP</b>    | <b>TRIPURA</b>                   |
|                      | <b>UP</b>     | <b>UTTAR PRADESH</b>             |
|                      | <b>UTRKND</b> | <b>UTTARAKHAND</b>               |
|                      | <b>VID</b>    | <b>VIDHARBHA</b>                 |
|                      | <b>SHWB</b>   | <b>SUB HIMALAYAN WEST BENGAL</b> |
|                      | <b>GWB</b>    | <b>GANGETIC WEST BENGAL</b>      |
|                      | <b>ARSEA</b>  | <b>ARABIAN SEA</b>               |
|                      | <b>ILS</b>    | <b>ISLANDS</b>                   |
| <b>MISCELLANEOUS</b> | <b>ASSW</b>   | <b>IN ASSOCIATION WITH</b>       |
|                      | <b>ASSTD</b>  | <b>ASSOCIATED</b>                |
|                      | <b>LLC</b>    | <b>LOW LEVEL CIRCULATION</b>     |
|                      | <b>EMBDD</b>  | <b>EMBEDDED</b>                  |
|                      | <b>N/HOOD</b> | <b>NEIGHBOURHOOD</b>             |
|                      | <b>EXT</b>    | <b>EXTREME</b>                   |