



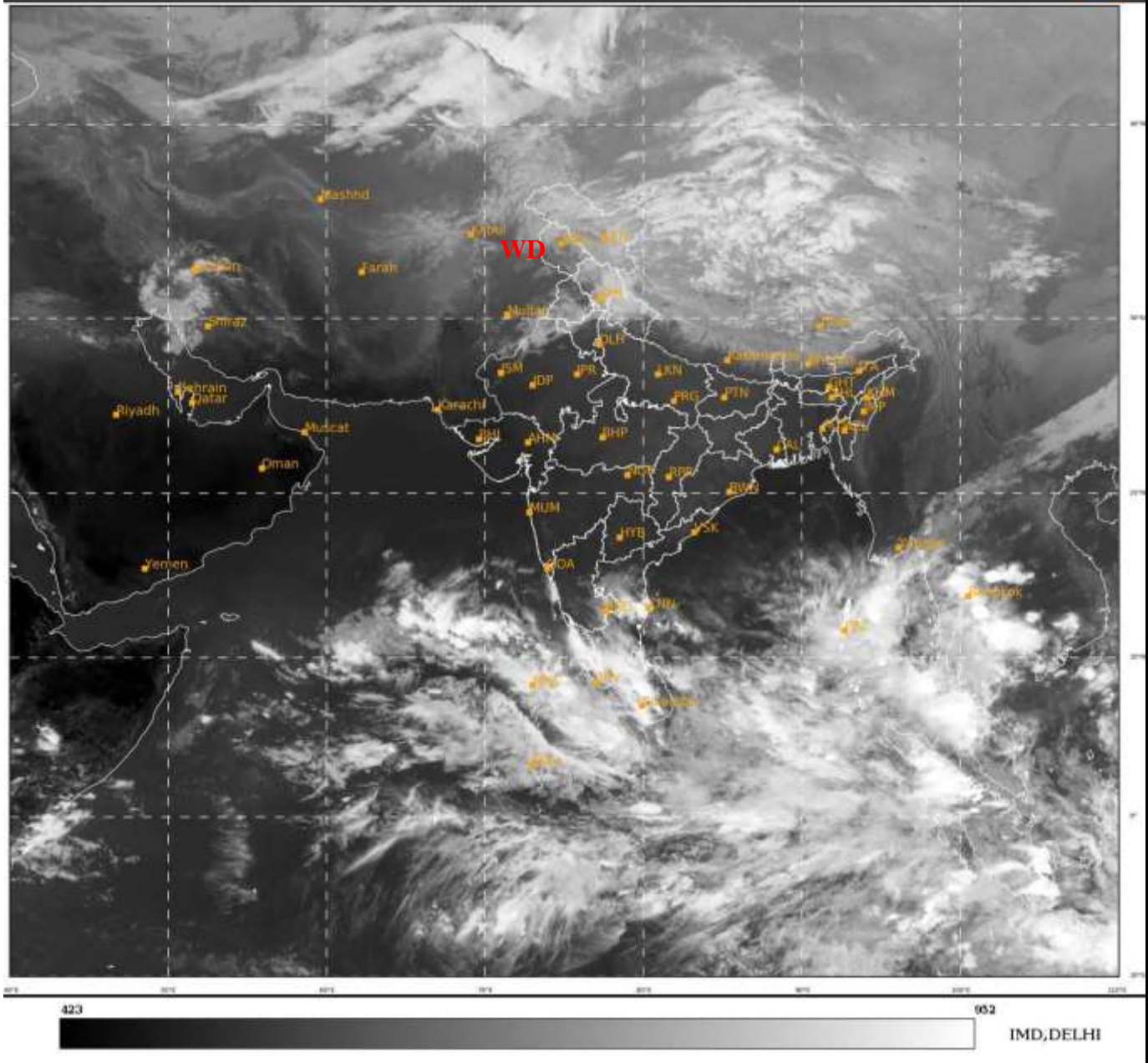
भारत मौसम विज्ञान विभाग  
पृथ्वी विज्ञान मंत्रालय  
India Meteorological Department  
Ministry of Earth Sciences



**SATELLITE BULLETIN BASED ON SATELLITE  
IMAGERIES AND PRODUCTS  
14.11.2022 TIME 1200 UTC**

SAT : INSAT-3D IMG  
IMG TIR1 10.8 um  
LIC Mercator

14-11-2022/(1200 to 1226) GMT  
14-11-2022/(1730 to 1756) IST



TCIN50 DEMS 141200

SATELLITE BULLETIN BASED ON INSAT-3D PIC OF 141200 UTC (.)

REGION COVERED BETWEEN LAT 50.0°N TO 35.0°S AND LONG 40.0°E TO 125.0°E (.)

**SALIENT FEATURES:-**

**WESTERN DISTURBANCE (WD):-**

SCT MULTILAYERED CLOUDS OVER N PAK LADAKH J&K HP PJB EXTREME NW RAJ N HARY  
UTRKN TIBET ADJ CHINA IN ASSW **WD** OVER THE AREA (.)

**CONVECTION OVER ANDAMAN SEA & N/HOOD:-**

INTENSE CONVECTION OVER ANDMAN SEA & N/HOOD PERSISTS (.) MINIMUM CTT MINUS **93**  
DEGREE CEL (.)



INSAT-3DR 14-NOV-2022 11:45 WV IMG

WATER VAPOUR WIND

(1 Kt = 0.5 m/s)

10 Kt

15 Kt

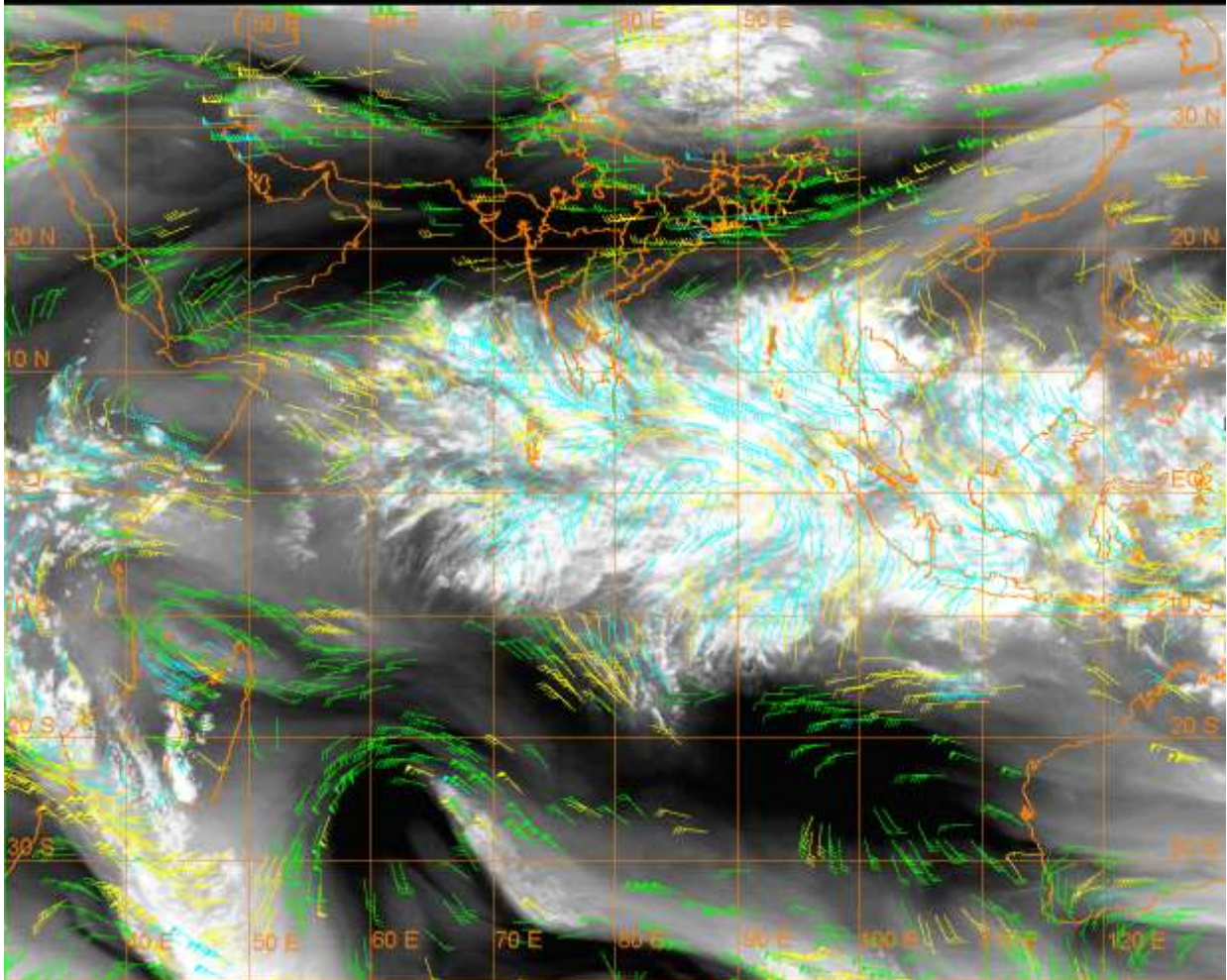
20 Kt

50 Kt

100-250 hPa

251-350 hPa

351-500 hPa



### **CLOUDS DESCRIPTION WITHIN INDIA:-**

#### **NORTH:-**

SCT LOW/MED CLOUDS WITH EMBDD MOD TO INT CONVTN OVER LADAKH J&K HP N UTRKND AND ISOL WK TO MOD CONVTN OVER PJB N HARY ADJ NW UP (.)

#### **EAST:-**

SCT LOW/MED CLOUDS WITH EMBDD ISOL WK CONVTN OVER SKM ARUPR (.) ISOL TO SCT LOW/MED CLOUDS OVER N SHWB MEGHA ASSAM NAGA MANI MIZO (.)

#### **WEST:-**

SCT LOW/MED CLOUDS WITH EMBDD WK TO MOD CONVTN OVER EXTREME W RAJ (.) ISOL TO SCT LOW/MED CLOUDS OVER SOUTH MADHYA MAHA S KKN S MRTHWD GOA (.)

#### **SOUTH:-**

SCT TO BKN LOW/MED CLOUDS WITH EMBDD INT TO V INT CONVTN OVER NE & S TN KER & ANDAMAN ILS (MINIMUM CTT MINUS 93 DEG CEL) (.) SCT LOW/MED CLOUDS WITH EMBDD MOD TO INT CONVTN OVER S RYLSM LKSDP ILS AREA NICOBAR ILS AND ISOL WK TO MOD CONVTN OVER E SIK C RYLSM S COTL AP REST TN (.) SCT LOW/MED CLOUDS OVER REST KRNTK S TLNGN REST RYLSM N COTL AP (.)

#### **ARABIAN SEA:-**

SCT TO BKN LOW/MED CLOUDS WITH EMBDD INT TO V INT CONVTN OVER SOUTH ADJ SOUTH PARTS OF CENTRAL ARSEA LKSDP ILS AREA & COMORIN AREA (MINIMUM CTT MINUS 93 DEGREE CEL) (.)

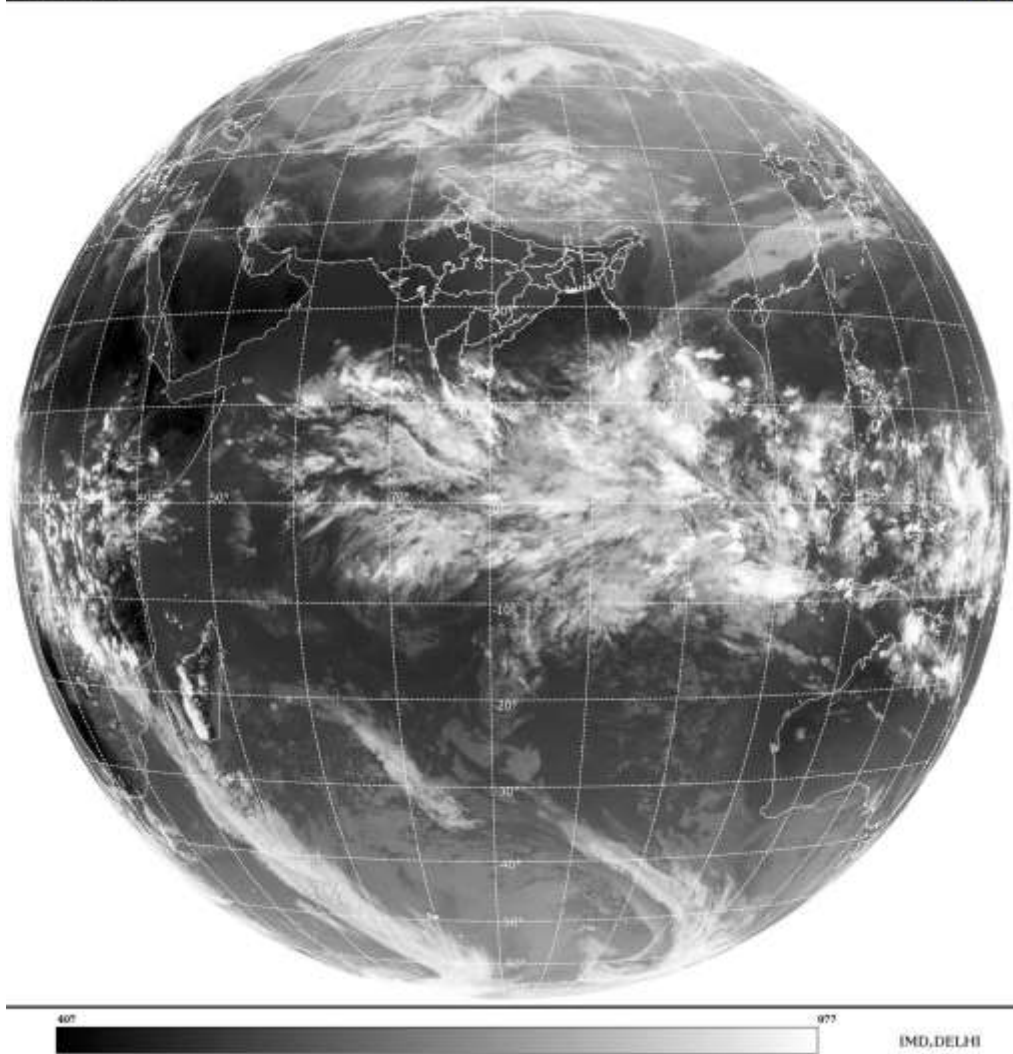
#### **BAY OF BENGAL & ANDAMAN SEA:-**

SCT TO BKN LOW/MED CLOUDS WITH EMBDD INT TO V INT CONVTN OVER SOUTH ADJ CENTRAL BAY AND ANDAMAN SEA (MINIMUM CTT MINUS 93 DEGREE CEL) (.)

**CLOUDS DESCRIPTION OUTSIDE INDIA:-**

SAT : INSAT-3D IMG  
Thermal Infrared1 Count 10.8 um  
LIB FULL DISK

14-11-2022/(1200 to 1226) GMT  
14-11-2022/(1730 to 1756) IST



**SCT LOW/MED CLOUDS WITH EMBDD MOD TO INT CONVTN OVER SRI LANKA PALK STR GULF OF MANNAR MALDIVES N PAK TIBET CHINA YELLOW SEA S MYANMAR THAILAND GULF OF THAILAND CAMBODIA S VEITNAM SUMATRA STR OF MALACCA MALAYSIA BORNEO SOUTH CHINA SEA JAVA ILS & SEA CELEBES ILS & SEA PHILIPPINES MOZAMBIQUE CHANNEL AND OVER INDIAN OCEAN BET LAT 5.0N TO 9.0S LONG 52.0E TO 78.0E AND BET LAT 5.0N TO 17.5S LONG 78.0E TO 116.5E(.)**

**TOO 14/1830 HRS IST=**

**NNNN**

**LEGEND:-**

|               |              |  |
|---------------|--------------|--|
| <b>REGION</b> | <b>NORTH</b> | <b>J&amp;K HP PJB HARY DLH UP UTRKND</b>                         |
|               | <b>EAST</b>  | <b>BHR JHRKND CHTGH OR WB SKM<br/>NORTH- EAST STATES</b>         |
|               | <b>WEST</b>  | <b>RAJ MP GUJ MAHA GOA</b>                                       |
|               | <b>SOUTH</b> | <b>TLNGN AP KRNTK KER TN LKSDP<br/>ANDAMAN &amp; NICOBAR ILS</b> |

|                               |             |                                 |
|-------------------------------|-------------|---------------------------------|
| <b>CLOUD DISTRIBUTION</b>     | <b>ISOL</b> | <b>ISOLATED (LESS THAN 25%)</b> |
|                               | <b>SCT</b>  | <b>SCATTERED (25 TO 50%)</b>    |
|                               | <b>BKN</b>  | <b>BROKEN (51 TO 75%)</b>       |
|                               | <b>SLD</b>  | <b>SOLID (GREATER THAN 75%)</b> |
| <b>CLOUDS TOP TEMPERATURE</b> | <b>CTT</b>  | <b>CLOUD TOP TEMPERATURE</b>    |

|   |                     |   |                   |
|---|---------------------|---|-------------------|
| <b>CONVECTION</b>   | <b>WK CONVTN</b>    | <b>WEAK CONVECTION<br/>(CTT GREATER THAN -25°C)</b>         |                   |
|   | <b>MOD CONVTN</b>   | <b>MODERATE CONVECTION<br/>(CTT BETWEEN -25°C TO -40°C)</b> |                   |
|   | <b>INT CONVTN</b>   | <b>INTENSE CONVECTION<br/>(CTT BETWEEN -41°C TO -70°C)</b>  |                   |
|   | <b>V INT CONVTN</b> | <b>VERY INTENSE CONVECTION<br/>(CTT LESS THAN -70°C)</b>    |                   |
| <b>METEOROLOGICAL SUB-DIVISIONS, STATES &amp; UNION TERRITORIES</b> | <b>ARUPR</b>        | <b>ARUNACHAL PRADESH</b>                                    |                   |
|   | <b>BHR</b>          | <b>BIHAR</b>  |                   |
|   | <b>CHTGH</b>        | <b>CHHATTISGARH</b>   |                   |
|   | <b>COTL AP</b>      | <b>COASTAL ANDHRA PRADESH</b>                               |                   |
|   | <b>COTL KRNTK</b>   | <b>COASTAL KARNATAKA</b>                                    |                   |
|   | <b>COTL ORS</b>     | <b>COASTAL ORISSA</b>                                       |                   |
|   | <b>GUJ</b>          | <b>GUJARAT</b>  |                   |
|   | <b>GWB</b>          | <b>GANGETIC WEST BENGAL</b>                                 |                   |
|   | <b>HARY</b>         | <b>HARYANA</b>  |                   |
|   | <b>DLH</b>          | <b>DELHI</b>  |                   |
|   | <b>HP</b>           | <b>HIMACHAL PRADESH</b>                                     |                   |
|   | <b>J&amp;K</b>      | <b>JAMMU AND KASHMIR</b>                                    |                   |
|   | <b>JHRKND</b>       | <b>JHARKHAND</b>  |                   |
|   | <b>KER</b>          | <b>KERALA</b>   |                   |
|   | <b>KKN</b>          | <b>KONKAN</b>   |                   |
|   | <b>LKSDP</b>        | <b>LAKSHADWEEP</b>  |                   |
|   | <b>M MAHA</b>       | <b>MADHYA MAHARASHTRA</b>                                   |                   |
|   | <b>MAHA</b>         | <b>MAHARASHTRA</b>  |                   |
|   | <b>MANI</b>         | <b>MANIPUR</b>  |                   |
|   | <b>MEGHA</b>        | <b>MEGHALAYA</b>  |                   |
|   | <b>MIZO</b>         | <b>MIZORAM</b>  |                   |
|   | <b>MP</b>           | <b>MADHYA PRADESH</b>                                       |                   |
|   |                     | <b>MRTHWD</b>   | <b>MARATHWADA</b> |
|   |                     | <b>NAGA</b>   | <b>NAGALAND</b>   |
| <b>N COTL AP</b>  |                     | <b>NORTH COASTAL ANDHRA PRADESH</b>                         |                   |
| <b>NIK</b>  |                     | <b>NORTH INTERIOR KARNATAKA</b>                             |                   |
| <b>ORS</b>  |                     | <b>ORISSA</b>   |                   |
| <b>PJB</b>  |                     | <b>PUNJAB</b>   |                   |
| <b>RAJ</b>  |                     | <b>RAJASTHAN</b>  |                   |
| <b>RYLSM</b>  |                     | <b>RAYALASEEMA</b>  |                   |
| <b>SAU &amp; KUTCH</b>  |                     | <b>SAURASHTRA &amp; KUTCH</b>                               |                   |
| <b>SHWB</b>   |                     | <b>SUB-HIMALAYAN WEST BENGAL</b>                            |                   |
| <b>SIK</b>  |                     | <b>SOUTH INTERIOR KARNATAKA</b>                             |                   |
| <b>SKM</b>  |                     | <b>SIKKIM</b>   |                   |
| <b>TLNGN</b>  |                     | <b>TELANGANA</b>  |                   |
| <b>TN</b>   |                     | <b>TAMIL NADU</b>   |                   |
| <b>TRP</b>  |                     | <b>TRIPURA</b>  |                   |
| <b>UP</b>   |                     | <b>UTTAR PRADESH</b>  |                   |
| <b>UTRKND</b>   |                     | <b>UTTARAKHAND</b>  |                   |
| <b>VID</b>  |                     | <b>VIDHARBHA</b>  |                   |

|                      |               |                                  |
|----------------------|---------------|----------------------------------|
|                      | <b>SHWB</b>   | <b>SUB HIMALAYAN WEST BENGAL</b> |
|                      | <b>GWB</b>    | <b>GANGETIC WEST BENGAL</b>      |
|                      | <b>ARSEA</b>  | <b>ARABIAN SEA</b>               |
|                      | <b>ILS</b>    | <b>ISLANDS</b>                   |
| <b>MISCELLANEOUS</b> | <b>ASSW</b>   | <b>IN ASSOCIATION WITH</b>       |
|                      | <b>ASSTD</b>  | <b>ASSOCIATED</b>                |
|                      | <b>LLC</b>    | <b>LOW LEVEL CIRCULATION</b>     |
|                      | <b>EMBDD</b>  | <b>EMBEDDED</b>                  |
|                      | <b>N/HOOD</b> | <b>NEIGHBOURHOOD</b>             |
|                      | <b>EXT</b>    | <b>EXTREME</b>                   |