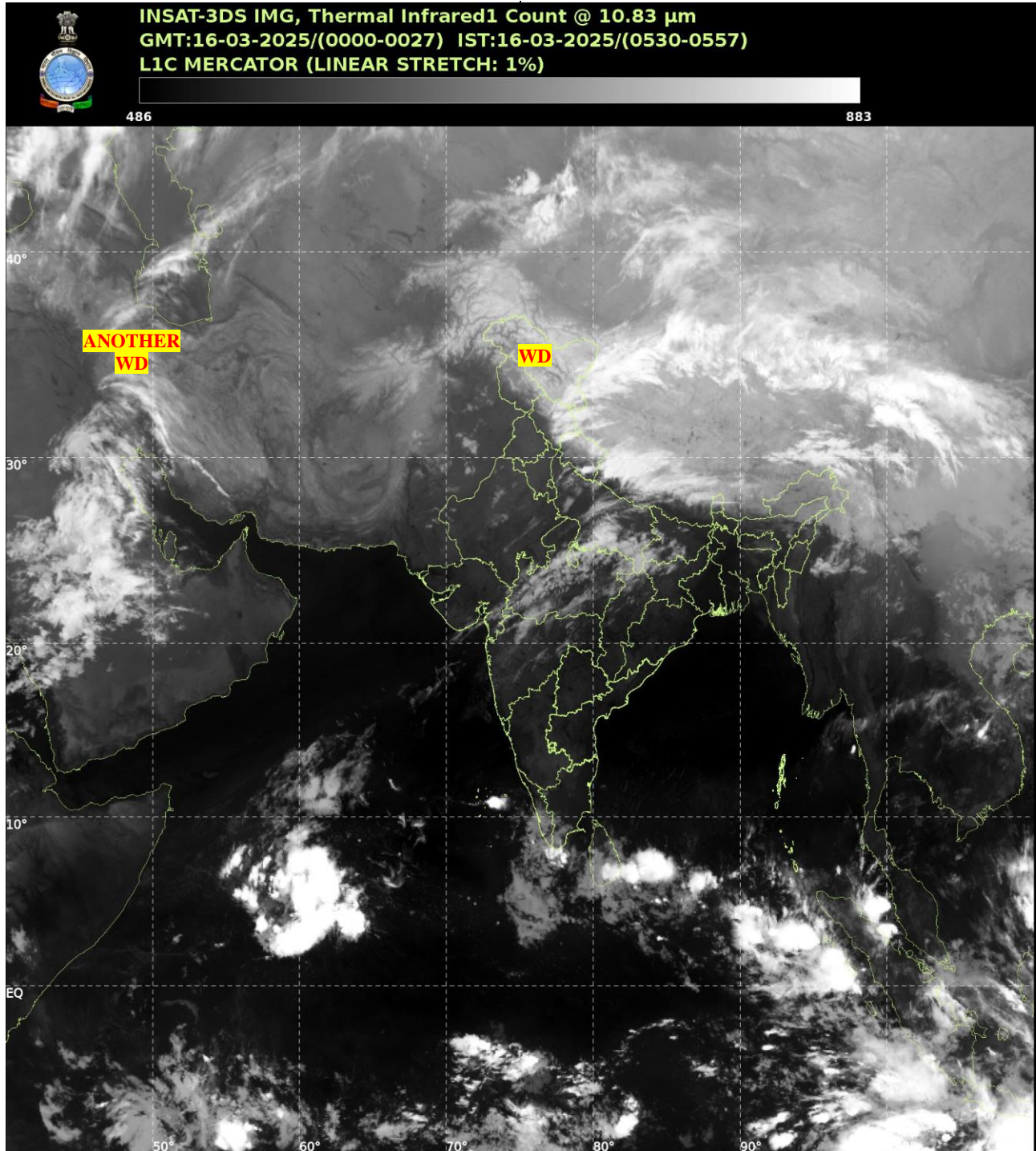




भारत मौसम विज्ञान विभाग
पृथ्वी विज्ञान मंत्रालय
India Meteorological Department
Ministry of Earth Sciences



**SATELLITE BULLETIN BASED ON SATELLITE
IMAGERIES AND PRODUCTS**
16.03.2025 TIME 0000 UTC



TCIN50 DEMS 160000

SATELLITE BULLETIN BASED ON INSAT-3DS PIC OF 160000 UTC (.)

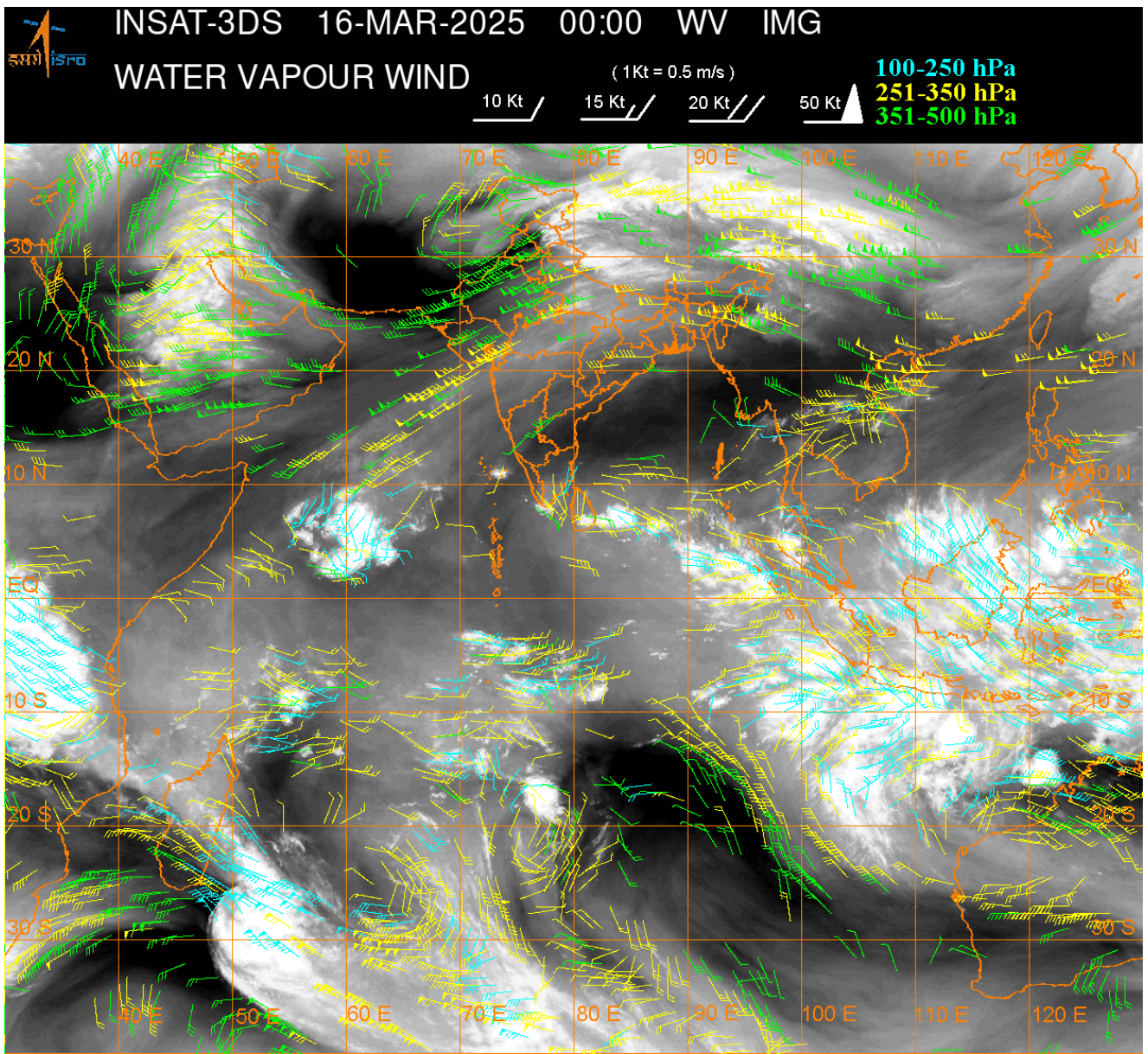
REGION COVERED BETWEEN LAT 50.0°N TO 35.0°S AND LONG 40.0°E TO 125.0°E (.)

SALIENT FEATURES:-

WESTERN DISTURBANCE:-

SCT MULTILAYERED CLOUDS OVER NORTH PAK LADAKH J&K HP PJB HARY DLH E RAJ
UTRKNND UP NEPAL TIBET ADJ CHINA IN ASSW **WD** OVER THE AREA (.)

SCT MULTILAYERED CLOUDS OVER IRAQ W IRAN AND N/HOOD IN ASSW **ANOTHER WD**
OVER THE AREA (.)



CLOUDS DESCRIPTION WITHIN INDIA:-

NORTH:-

SCT LOW/MED CLOUDS WITH EMBDD WK TO MOD CONV TN OVER LADAKH N J&K HP J&K UTRKND UP (.)

EAST:-

SCT LOW/MED CLOUDS WITH EMBDD ISOL WK TO MOD CONV TN OVER SW BHR NW JHRKND N CHTGH SKM ARUPR NE ASSAM (.) SCT LOW/MED CLOUDS OVER N BHR REST NE STATES (.)

WEST:-

SCT LOW/MED CLOUDS WITH EMBDD WK TO MOD CONV TN OVER MP SE GUJ NORTH MADHYA MAHA (.) SCT LOW/MED CLOUDS OVER RAJ REST MAHA & GOA (.)

SOUTH:-

SCT LOW/MED CLOUDS WITH EMBDD WK TO MOD CONV TN OVER S KER S TN & NICOBAR ILS (.) SCT LOW/MED CLOUDS OVER N KER NW TN LKSDP ILS AREA ANDAMAN ILS (.)

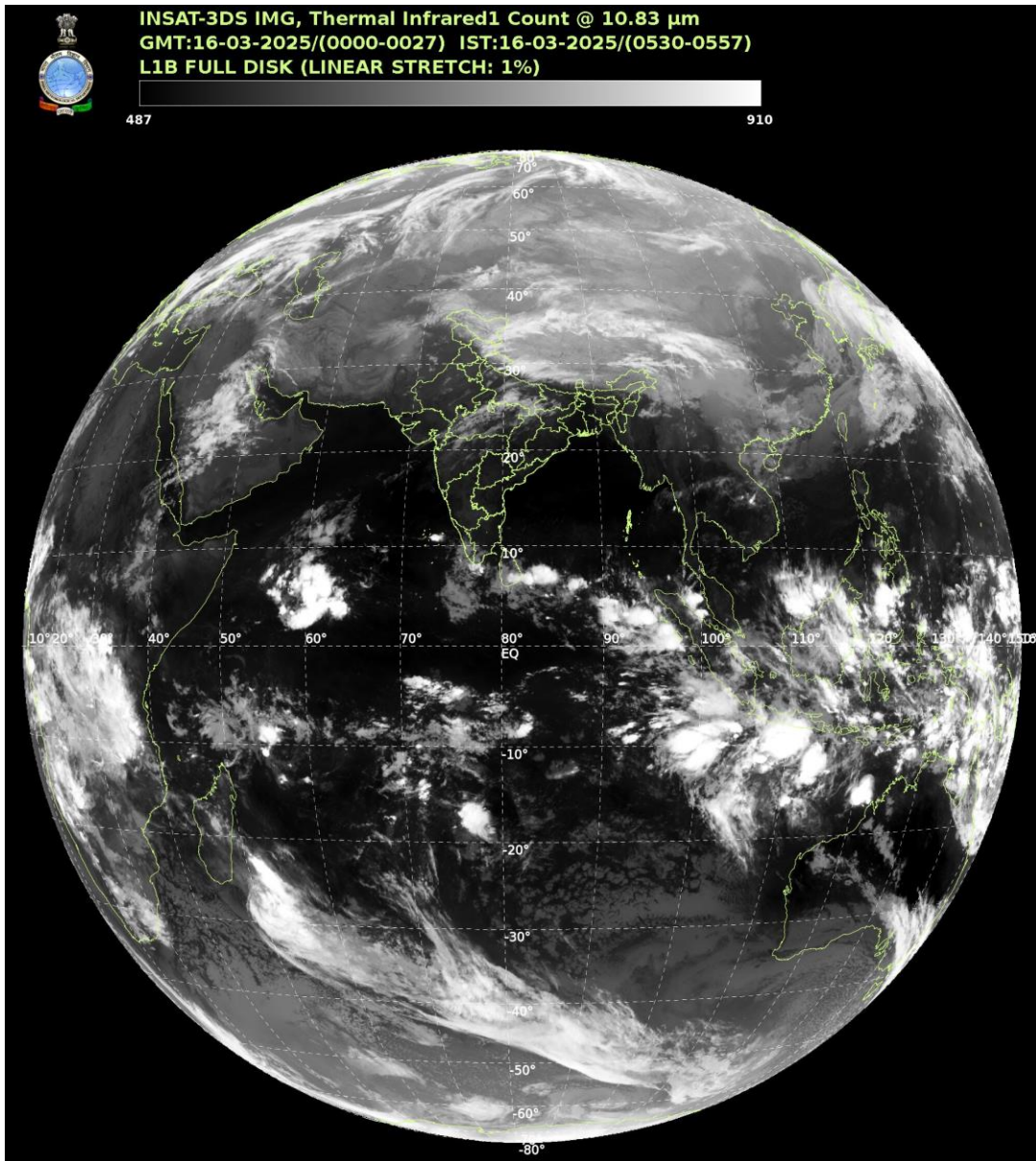
ARABIAN SEA:-

SCT LOW/MED CLOUDS WITH EMBDD MOD TO INT CONV TN OVER CENTRAL PARTS OF SOUTH ARSEA & LKSDP ILS AREA (.)

BAY OF BENGAL & ANDAMAN SEA:-

SCT LOW/MED CLOUDS WITH EMBDD MOD TO INT CONV TN OVER SOUTH BAY AND ISOL WK TO MOD CONV TN OVER S ANDAMAN SEA (.)

CLOUDS DESCRIPTION OUTSIDE INDIA:-



SCT LOW/MED CLOUDS WITH EMBDD MOD TO INT CONVTN OVER SRI LANKA NORTH PAK NEPAL BHUTAN TIBET CHINA YELLOW SEA EAST CHINA SEA TAIWAN THAILAND GULF OF THAILAND CAMBODIA LAOS VIETNAM HAINAN SUMATRA STR OF MALACCA MALAYSIA BORNEO SOUTH CHINA SEA JAVA ILS & SEA CELEBES ILS & SEA PHILIPPINES SULU SEA MADAGASCAR MOZAMBIQUE CHANNEL AND OVER INDIAN OCEAN BET LAT 5.0N TO 35.0S LONG 40.0E TO 125.0E (.)

TOO 16/0720 EF=

NNNN

LEGEND:-

| | | |
|---------------|--------------|--|
| REGION | NORTH | J&K HP PJB HARY DLH UP UTRKND |
| | EAST | BHR JHRKND CHTGH ORS WB SKM NORTH- EAST STATES |
| | WEST | RAJ MP GUJ MAHA GOA |
| | SOUTH | TLNGN AP KRNTK KER TN LKSDP ANDAMAN & NICOBAR ILS |
| | ISOL | ISOLATED (LESS THAN 25%) |
| | SCT | SCATTERED (25 TO 50%) |

| | | | |
|---|---------------------|---|-------------------|
| CLOUD DISTRIBUTION | BKN | BROKEN (51 TO 75%) | |
| | SLD | SOLID (GREATER THAN 75%) | |
| CLOUDS TOP TEMPERATURE | CTT | CLOUD TOP TEMPERATURE | |
| CONVECTION | WK CONVTN | WEAK CONVECTION (CTT GREATER THAN -25°C) | |
| | MOD CONVTN | MODERATE CONVECTION (CTT BETWEEN -25°C TO -40°C) | |
| | INT CONVTN | INTENSE CONVECTION (CTT BETWEEN -41°C TO -70°C) | |
| | V INT CONVTN | VERY INTENSE CONVECTION (CTT LESS THAN -70°C) | |
| METEOROLOGICAL SUB- DIVISIONS, STATES & UNION TERITORIES | ARUPR | ARUNACHAL PRADESH | |
| | BHR | BIHAR | |
| | CHTGH | CHHATTISGARH | |
| | COTL AP | COASTAL ANDHRA PRADESH | |
| | COTL KRNTK | COASTAL KARNATAKA | |
| | COTL ORS | COASTAL ORISSA | |
| | GUJ | GUJARAT | |
| | GWB | GANGETIC WEST BENGAL | |
| | HARY | HARYANA | |
| | DLH | DELHI | |
| | HP | HIMACHAL PRADESH | |
| | J&K | JAMMU AND KASHMIR | |
| | JHRKND | JHARKHAND | |
| | KER | KERALA | |
| | KN | KONKAN | |
| | LKSDP | LAKSHADWEEP | |
| | M MAHA | MADHYA MAHARASHTRA | |
| | MAHA | MAHARASHTRA | |
| | MANI | MANIPUR | |
| | MEGHA | MEGHALAYA | |
| | MIZO | MIZORAM | |
| | MP | MADHYA PRADESH | |
| | | MRTHWD | MARATHWADA |
| | | NAGA | NAGALAND |
| N COTL AP | | NORTH COASTAL ANDHRA PRADESH | |
| NIK | | NORTH INTERIOR KARNATAKA | |
| ORS | | ORISSA | |
| PJB | | PUNJAB | |
| RAJ | | RAJASTHAN | |
| RYLSM | | RAYALASEEMA | |
| SAU & KUTCH | | SAURASHTRA & KUTCH | |
| SHWB | | SUB-HIMALAYAN WEST BENGAL | |
| SIK | | SOUTH INTERIOR KARNATAKA | |
| SKM | | SIKKIM | |
| TLNGN | | TELANGANA | |
| TN | | TAMIL NADU | |

| | | |
|----------------------|---------------|----------------------------------|
| | TRP | TRIPURA |
| | UP | UTTAR PRADESH |
| | UTRKND | UTTARAKHAND |
| | VID | VIDHARBHA |
| | SHWB | SUB HIMALAYAN WEST BENGAL |
| | GWB | GANGETIC WEST BENGAL |
| | ARSEA | ARABIAN SEA |
| | ILS | ISLANDS |
| MISCELLANEOUS | ASSW | IN ASSOCIATION WITH |
| | ASSTD | ASSOCIATED |
| | LLC | LOW LEVEL CIRCULATION |
| | EMBDD | EMBEDDED |
| | N/HOOD | NEIGHBOURHOOD |
| | EXT | EXTREME |