



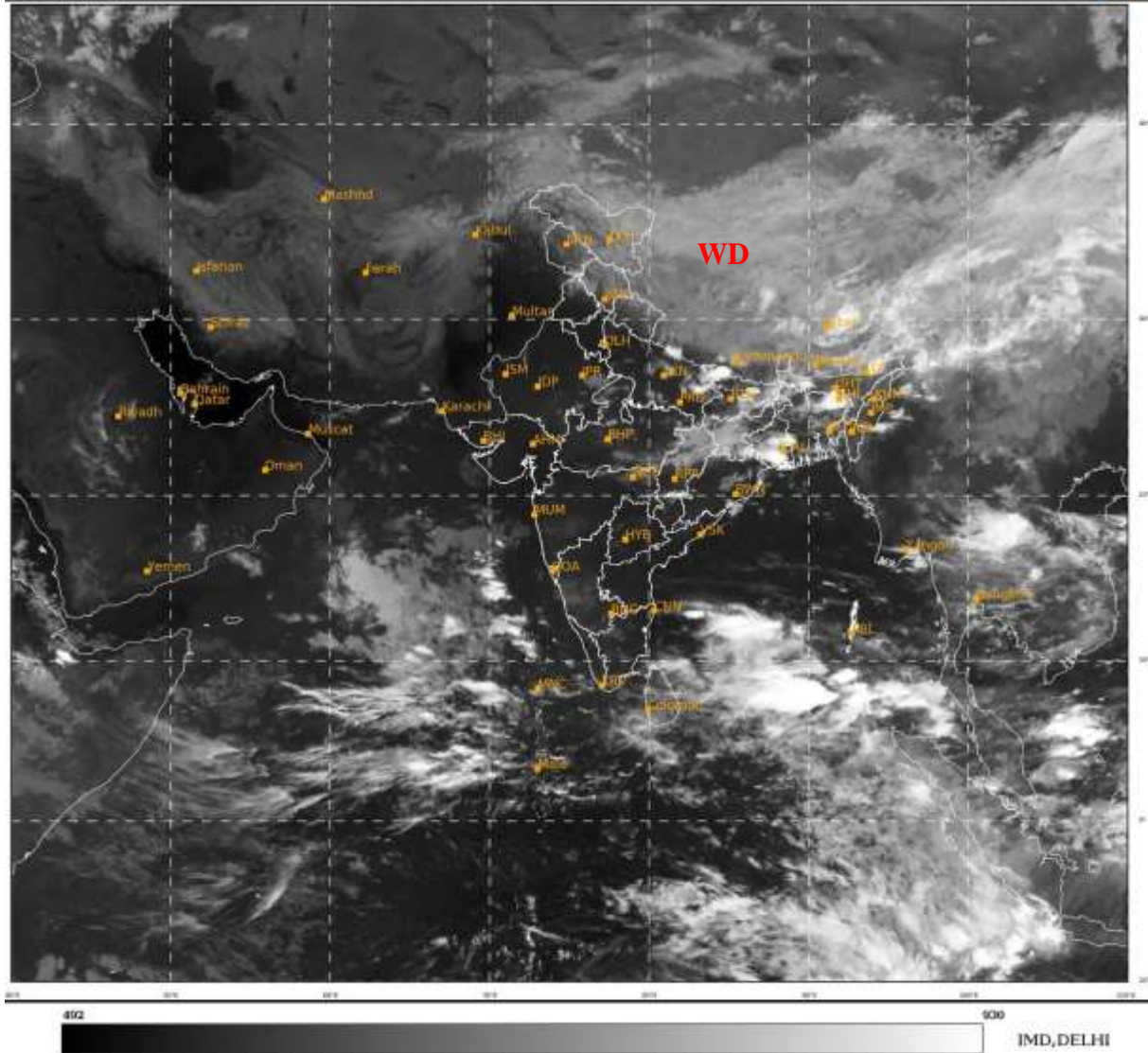
भारत मौसम विज्ञान विभाग  
पृथ्वी विज्ञान मंत्रालय  
India Meteorological Department  
Ministry of Earth Sciences



**SATELLITE BULLETIN BASED ON SATELLITE  
IMAGERIES AND PRODUCTS**  
**03.09.2022 TIME 0000 UTC**

SAT : INSAT-3D IMG  
IMG\_TIR1 10.8 um  
LIC Mercator

03-09-2022/(0000 to 0026) GMT  
03-09-2022/(0530 to 0556) IST



TCIN50 DEMS 030000

SATELLITE BULLETIN BASED ON INSAT-3D PIC OF 030000 UTC (.)

REGION COVERED BETWEEN LAT 50.0°N TO 30.0°S AND LONG 40.0°E TO 125.0°E (.)

**SALIENT FEATURES:-**

**WESTERN DISTURBANCE:-**

SCT MULTILAYERED CLOUDS OVER LADAKH TIBET ADJ CHINA IN ASSW **WD** OVER THE AREA (.)

**CONVECTION OVER LAKSHADWEEP ISLANDS AREA & N/HOOD:-**

INTENSE CONVECTIVE CLOUDS OVER SE ADJ EC ARSEA & LKSDP ILS AREA PERSISTS (.)

**INTENSE CONVECTIVE CLOUDS :-**

INTENSE CONVECTIVE CLOUDS OBSERVED OVER E UP BHR JHRKND SHWB S GWB ARUPR & LKSDP ILS (.)

**CLOUDS DESCRIPTION WITHIN INDIA:-**

**NORTH:-**

SCT LOW/MED CLOUDS WITH EMBDD MOD TO INT CONVTN OVER E UP AND ISOL WK TO MOD CONVTN OVER LADAKH J&K HP N UTRKND REST C UP (.)

**EAST:-**

SCT LOW/MED CLOUDS WITH EMBDD MOD TO INT CONVTN OVER N & C CHTGH BHR JHRKND S GWB SHWB MEGHA BD ARUPR ADJ NE ASSAM (.) SCT LOW/MED CLOUDS WITH EMBDD ISOL WK TO MOD CONVTN OVER ORS E ASSAM (.)

**WEST:-**

SCT LOW/MED CLOUDS WITH EMBDD ISOL WK CONVTN OVER SE RAJ E MP GOA (.)

**SOUTH:-**

SCT LOW/MED CLOUDS WITH EMBDD MOD TO INT CONVTN OVER LKSDP ILS & NICOBAR ILS (.)

**ARABIAN SEA:-**

SCT TO BKN LOW/MED CLOUDS WITH EMBDD INT CONVTN OVER SE & EC ARSEA LKSDP ILS AREA (.) SCT LOW/MED CLOUDS WITH EMBDD WK TO MOD CONVTN OVER N ARSEA REST CENTRAL ARSEA & COMORIN AREA (.)

**BAY OF BENGAL & ANDAMAN SEA:-**

SCT LOW/MED CLOUDS WITH EMBDD MOD TO INT CONVTN OVER SOUTH BAY ANDAMAN SEA (.)

**CLOUDS DESCRIPTION OUTSIDE INDIA:-**

**VORTEX (HINNAMNOR) OVER PHILIPPINES SEA & N/HOOD:-**

VORTEX (HINNAMNOR) OVER PHILIPPINES SEA & N/HOOD CENTERED NEAR **23.0N/125.0E** (.) INTENSITY **T4.5** (.) ASSTD BKN LOW/MED CLOUDS WITH EMBDD MOD TO INT CONVTN OVER AREA BET LAT 17.0N TO 23.5N LONG 122.0E TO 129.0E (.)

SCT LOW/MED CLOUDS WITH EMBDD MOD TO INT CONVTN OVER MALDIVES NEPAL TIBET CHINA MYANMAR THAILAND GULF OF THAILAND CAMBODIA LAOS VIETNAM HAINAN SUMATRA STR OF MALACCA MALAYSIA BORNEO SOUTH CHINA SEA CELEBES ILS PHILIPPINES E CHINA SEA AND OVER INDIAN OCEAN BET LAT EQ TO 13.0S EAST OF LONG 77.0E (.)

TOO 03/0735 HRS IST=

NNNN

**LEGEND:-**

|        |       |   |
|--------|-------|---|
| REGION | NORTH | J&K HP PJB HARY DLH UP UTRKND                     |
|        | EAST  | BHR JHRKND CHTGH OR WB SKM NORTH- EAST STATES     |
|        | WEST  | RAJ MP GUJ MAHA GOA                               |
|        | SOUTH | TLNGN AP KRNTK KER TN LKSDP ANDAMAN & NICOBAR ILS |

|                        |           |  |
|------------------------|-----------|--|
| CLOUD DISTRIBUTION     | ISOL      | ISOLATED (LESS THAN 25%)                 |
|                        | SCT       | SCATTERED (25 TO 50%)                    |
|                        | BKN       | BROKEN (51 TO 75%)                       |
|                        | SLD       | SOLID (GREATER THAN 75%)                 |
| CLOUDS TOP TEMPERATURE | CTT       | CLOUD TOP TEMPERATURE                    |
|                        | WK CONVTN | WEAK CONVECTION (CTT GREATER THAN -25°C) |

|   |                                  |   |
|---|----------------------------------|---|
| <b>CONVECTION</b>   | <b>MOD CONV TN</b>               | <b>MODERATE CONVECTION<br/>(CTT BETWEEN -25°C TO -40°C)</b> |
|   | <b>INT CONV TN</b>               | <b>INTENSE CONVECTION<br/>(CTT BETWEEN -41°C TO -70°C)</b>  |
|   | <b>V INT CONV TN</b>             | <b>VERY INTENSE CONVECTION<br/>(CTT LESS THAN -70°C)</b>    |
| <b>METEOROLOGICAL SUB-DIVISIONS, STATES &amp; UNION TERRITORIES</b> | <b>ARUPR</b>                     | <b>ARUNACHAL PRADESH</b>                                    |
|   | <b>BHR</b>                       | <b>BIHAR</b>  |
|   | <b>CHTGH</b>                     | <b>CHHATTISGARH</b>   |
|   | <b>COTL AP</b>                   | <b>COASTAL ANDHRA PRADESH</b>                               |
|   | <b>COTL KRNTK</b>                | <b>COASTAL KARNATAKA</b>                                    |
|   | <b>COTL ORS</b>                  | <b>COASTAL ORISSA</b>                                       |
|   | <b>GUJ</b>                       | <b>GUJARAT</b>  |
|   | <b>GWB</b>                       | <b>GANGETIC WEST BENGAL</b>                                 |
|   | <b>HARY</b>                      | <b>HARYANA</b>  |
|   | <b>DLH</b>                       | <b>DELHI</b>  |
|   | <b>HP</b>                        | <b>HIMACHAL PRADESH</b>                                     |
|   | <b>J&amp;K</b>                   | <b>JAMMU AND KASHMIR</b>                                    |
|   | <b>JHRKND</b>                    | <b>JHARKHAND</b>  |
|   | <b>KER</b>                       | <b>KERALA</b>   |
|   | <b>KKN</b>                       | <b>KONKAN</b>   |
|   | <b>LKSDP</b>                     | <b>LAKSHADWEEP</b>  |
|   | <b>M MAHA</b>                    | <b>MADHYA MAHARASHTRA</b>                                   |
|   | <b>MAHA</b>                      | <b>MAHARASHTRA</b>  |
|   | <b>MANI</b>                      | <b>MANIPUR</b>  |
|   | <b>MEGHA</b>                     | <b>MEGHALAYA</b>  |
|   | <b>MIZO</b>                      | <b>MIZORAM</b>  |
|   | <b>MP</b>                        | <b>MADHYA PRADESH</b>                                       |
|   | <b>MRTHWD</b>                    | <b>MARATHWADA</b>   |
|   | <b>NAGA</b>                      | <b>NAGALAND</b>   |
|   | <b>N COTL AP</b>                 | <b>NORTH COASTAL ANDHRA PRADESH</b>                         |
|   | <b>NIK</b>                       | <b>NORTH INTERIOR KARNATAKA</b>                             |
| <b>ORS</b>  | <b>ORISSA</b>                    |   |
| <b>PJB</b>  | <b>PUNJAB</b>                    |   |
| <b>RAJ</b>  | <b>RAJASTHAN</b>                 |   |
| <b>RYLSM</b>  | <b>RAYALASEEMA</b>               |   |
| <b>SAU &amp; KUTCH</b>  | <b>SAURASHTRA &amp; KUTCH</b>    |   |
| <b>SHWB</b>   | <b>SUB-HIMALAYAN WEST BENGAL</b> |   |
| <b>SIK</b>  | <b>SOUTH INTERIOR KARNATAKA</b>  |   |
| <b>SKM</b>  | <b>SIKKIM</b>                    |   |
| <b>TLNGN</b>  | <b>TELANGANA</b>                 |   |
| <b>TN</b>   | <b>TAMIL NADU</b>                |   |
| <b>TRP</b>  | <b>TRIPURA</b>                   |   |
| <b>UP</b>   | <b>UTTAR PRADESH</b>             |   |
| <b>UTRKND</b>   | <b>UTTARAKHAND</b>               |   |
| <b>VID</b>  | <b>VIDHARBHA</b>                 |   |
| <b>SHWB</b>   | <b>SUB HIMALAYAN WEST BENGAL</b> |   |

|                      |               |                              |
|----------------------|---------------|------------------------------|
|                      | <b>GWB</b>    | <b>GANGETIC WEST BENGAL</b>  |
|                      | <b>ARSEA</b>  | <b>ARABIAN SEA</b>           |
|                      | <b>ILS</b>    | <b>ISLANDS</b>               |
| <b>MISCELLANEOUS</b> | <b>ASSW</b>   | <b>IN ASSOCIATION WITH</b>   |
|                      | <b>ASSTD</b>  | <b>ASSOCIATED</b>            |
|                      | <b>LLC</b>    | <b>LOW LEVEL CIRCULATION</b> |
|                      | <b>EMBDD</b>  | <b>EMBEDDED</b>              |
|                      | <b>N/HOOD</b> | <b>NEIGHBOURHOOD</b>         |
|                      | <b>EXT</b>    | <b>EXTREME</b>               |