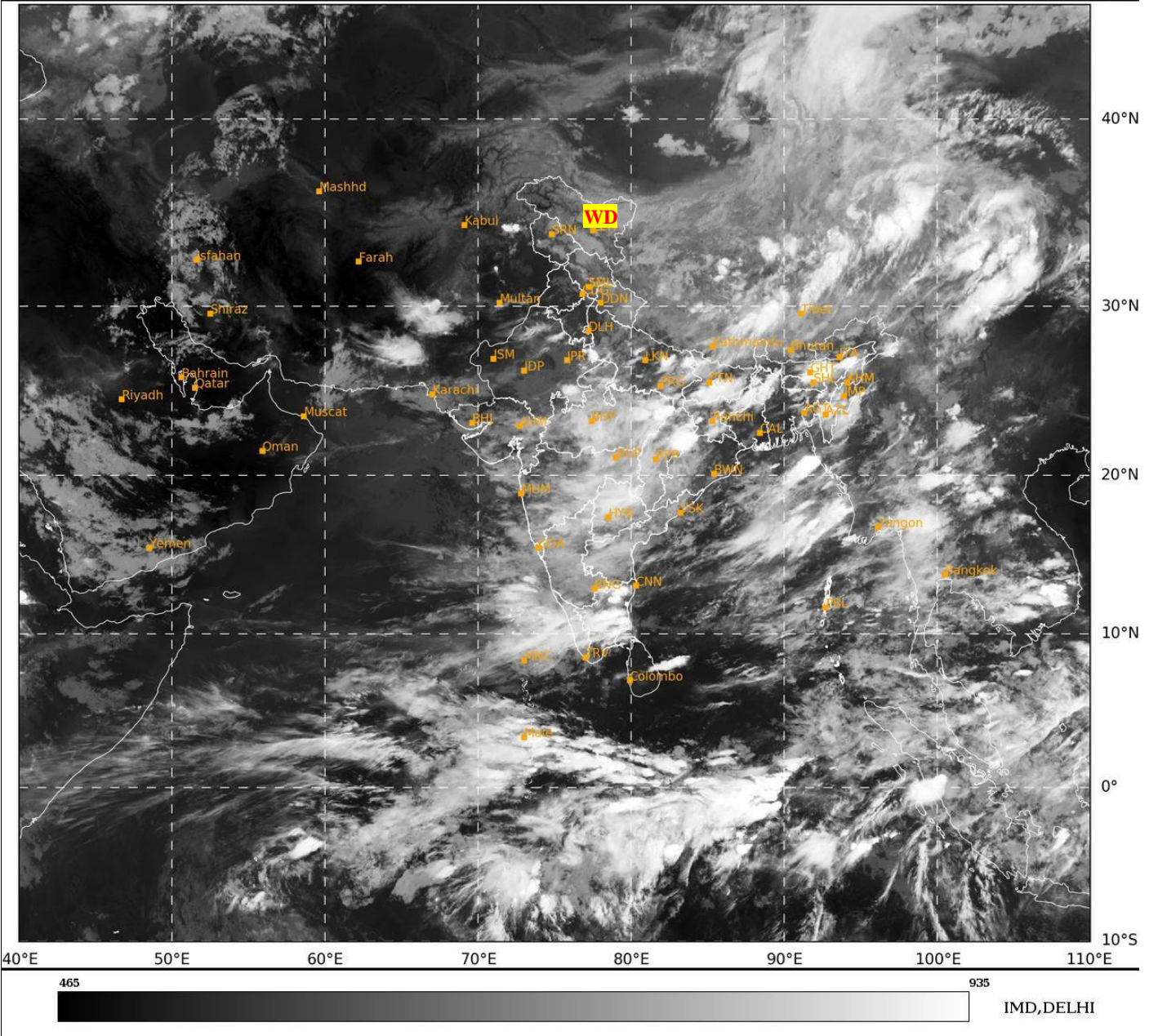




**SATELLITE BULLETIN BASED ON SATELLITE
IMAGERIES AND PRODUCTS**
07.08.2024 TIME 1800 UTC

SAT : INSAT-3DR IMG
IMG_TIR1 10.8 um
LIC Mercator

07-08-2024/(1745 to 1812) GMT
07-08-2024/(2315 to 2342) IST



TCIN50 DEMS 071800

SATELLITE BULLETIN BASED ON INSAT-3DR PIC OF 071745 UTC (.)

REGION COVERED BETWEEN LAT 50.0°N TO 35.0°S AND LONG 40.0°E TO 125.0°E (.)

SALIENT FEATURES:-

WESTERN DISTURBANCE (WD) :-

SCT MULTILAYERED CLOUDS OVER E LADAKH TIBET ADJ CHINA IN ASSW **WD** OVER THE AREA (.)

CONVECTIVE / THUNDERSTORM ACTIVITY:-

INTENSE TO VERY INTENSE CONVECTIVE / THUNDERSTORM ACTIVITY OVER N UP BHR NE MP JHRKND N CHTGH ADJ NW ORS NE ASSAM N TN (MINIMUM **CTT MINUS 70-90 DEG CEL**) (.)

MODERATE TO INTENSE CONVECTIVE / THUNDERSTORM ACTIVITY OVER S UP E RAJ REST MP S CHTGH SW ORS SHWB E ARUPR MANI MIZO REST MAHA GOA NIK TLNGN RYLSM COTL AP KER S TN LKSDP ILS (MINIMUM **CTT MINUS 50-70 DEG CEL**) (.)



INSAT-3DR 07-AUG-2024 17:45 WV IMG

WATER VAPOUR WIND

(1Kt = 0.5 m/s)

10 Kt

15 Kt

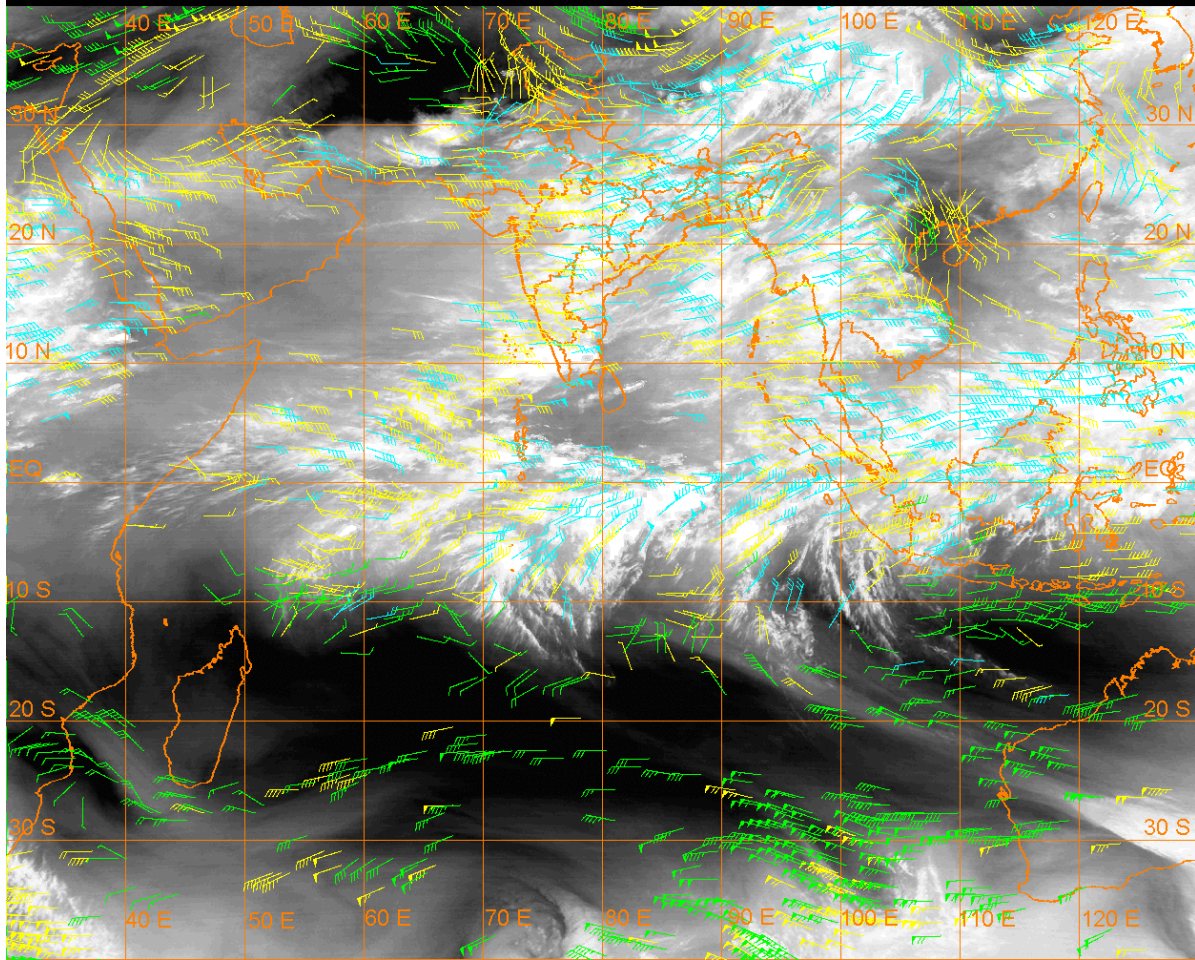
20 Kt

50 Kt

100-250 hPa

251-350 hPa

351-500 hPa



CLOUDS DESCRIPTION WITHIN INDIA:-

NORTH:-

SCT LOW/MED CLOUDS WITH EMBDD INT TO V INT CONVTN OVER NE UP (.) SCT LOW/MED CLOUDS WITH EMBDD MOD TO INT CONVTN OVER S UP AND WK TO MOD CONVTN OVER LADAKH J&K HP UTRKND EXT SW HARY NW UP (.) SCT LOW/MED CLOUDS OVER PJB REST HARY DLH (.)

EAST:-

SCT LOW/MED CLOUDS WITH EMBDD INT TO V INT CONVTN OVER S BHR N JHRKND N CHTGH ADJ NW ORS NE ASSAM & N BD (.) SCT LOW/MED CLOUDS WITH EMBDD MOD TO INT CONVTN OVER N BHR S CHTGH SW ORS SHWB E ARUPR MEGHA SE ASSAM NAGA MANI MIZO AND WK TO MOD CONVTN OVER GWB SKM W ARUPR TRP (.)

WEST:-

SCT LOW/MED CLOUDS WITH EMBDD INT TO V INT CONVTN OVER NE MP (.) SCT LOW/MED CLOUDS WITH EMBDD MOD TO INT CONVTN OVER E RAJ REST MP MAHA AND WK TO MOD CONVTN OVER NW RAJ GUJ GOA (.)SCT LOW/MED CLOUDS OVER SW RAJ (.)

SOUTH:-

SCT LOW/MED CLOUDS WITH EMBDD INT TO V INT CONVTN OVER N TN (.) SCT LOW/MED CLOUDS WITH EMBDD MOD TO INT CONVTN OVER NIK TLNGN RYLSM COTL AP KER S TN LKSDP ILS AND WK TO MOD CONVTN OVER REST KRNTK ANDAMAN & NICOBAR ILS (.)

ARABIAN SEA:-

SCT LOW/MED CLOUDS WITH EMBDD MOD TO INT CONVTN OVER EC & SOUTH ARSEA LKSDP ILS AREA MALDIVES AREA & COMORIN AREA (.) SCT LOW/MED CLOUDS WITH EMBDD ISOL WK TO MOD CONVTN OVER GULF OF CAMBAY & SW ARSEA (.)

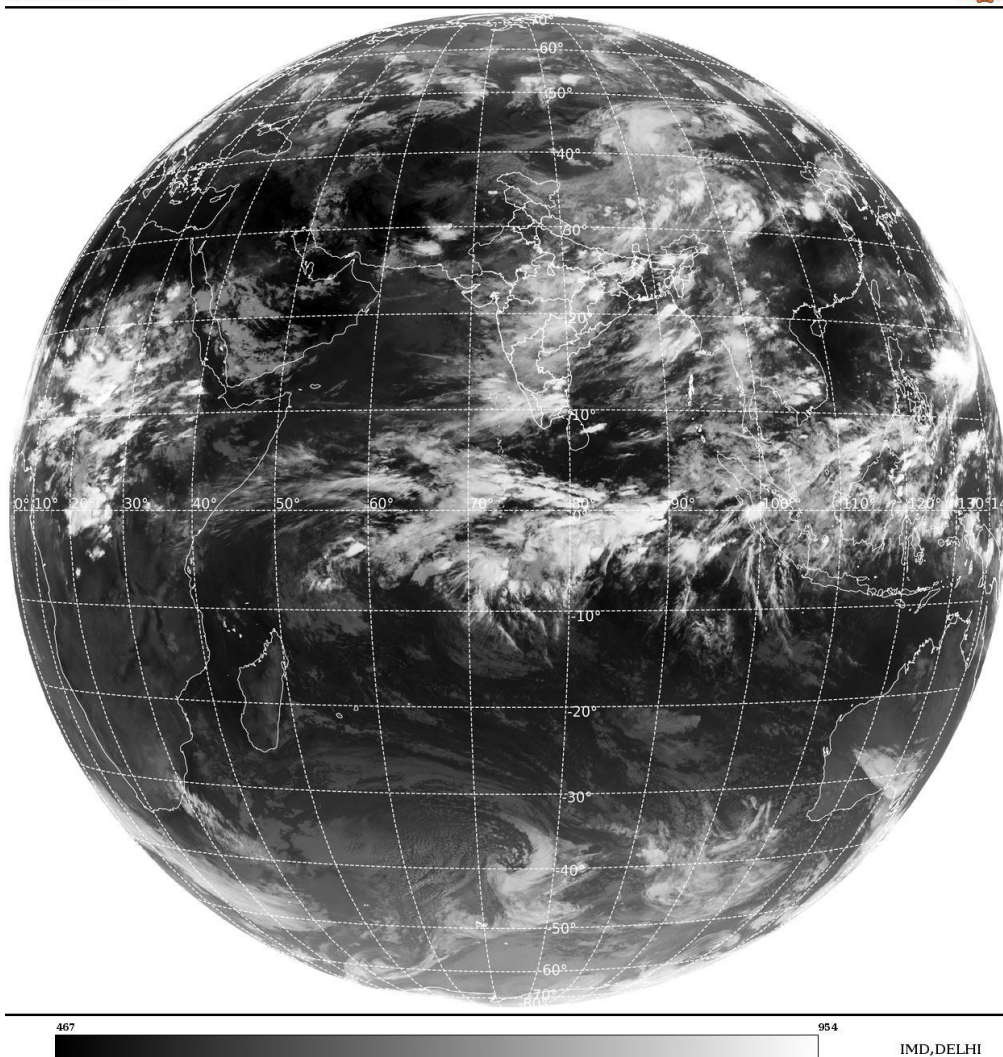
BAY OF BENGAL & ANDAMAN SEA:-

SCT LOW/MED CLOUDS WITH EMBDD INT TO V INT CONVTN OVER NE & EC BAY ARAKAN COAST (.) SCT LOW/MED CLOUDS WITH EMBDD MOD TO INT CONVTN OVER REST BAY ANDAMAN SEA GULF OF MARTBAN TENASSERIM COAST (.)

CLOUDS DESCRIPTION OUTSIDE INDIA:-

SAT : INSAT-3DR IMG
 Thermal Infrared1 Count 10.8 um
 L1B FULL DISK

07-08-2024/(1745 to 1812) GMT
 07-08-2024/(2315 to 2342) IST



SCT LOW/MED CLOUDS WITH EMBDD MOD TO INT CONVTN OVER SRI LANKA PALK STR GULF OF MANNAR MALDIVES PAK NEPAL BHUTAN TIBET CHINA YELLOW SEA EAST CHINA SEA TAIWAN MYANMAR THAILAND GULF OF THAILAND CAMBODIA LAOS VIETNAM SUMATRA STR OF MALACCA MALAYSIA BORNEO SOUTH CHINA SEA JAVA ILS & SEA CELEBES ILS & SEA PHILIPPINES SULU SEA AND OVER INDIAN OCEAN BET LAT 5.0N TO 10.0S LONG 50.0E TO 110.0E (.)

TOO 08/0010 HRS IST=

NNNN

LEGEND:-

REGION	NORTH	J&K HP PJB HARY DLH UP UTRKND
	EAST	BHR JHRKND CHTGH OR WB SKM NORTH- EAST STATES
	WEST	RAJ MP GUJ MAHA GOA
	SOUTH	TLNGN AP KRNTK KER TN LKSDP ANDAMAN & NICOBAR ILS
CLOUD DISTRIBUTION	ISOL	ISOLATED (LESS THAN 25%)
	SCT	SCATTERED (25 TO 50%)
	BKN	BROKEN (51 TO 75%)
	SLD	SOLID (GREATER THAN 75%)

CLOUDS TOP TEMPERATURE	CTT	CLOUD TOP TEMPERATURE
CONVECTION	WK CONV TN	WEAK CONVECTION (CTT GREATER THAN -25°C)
	MOD CONV TN	MODERATE CONVECTION (CTT BETWEEN -25°C TO -40°C)
	INT CONV TN	INTENSE CONVECTION (CTT BETWEEN -41°C TO -70°C)
	V INT CONV TN	VERY INTENSE CONVECTION (CTT LESS THAN -70°C)
METEOROLOGICAL SUB- DIVISIONS, STATES & UNION TERRITORIES	ARUPR	ARUNACHAL PRADESH
	BHR	BIHAR
	CHTGH	CHHATTISGARH
	COTL AP	COASTAL ANDHRA PRADESH
	COTL KRNTK	COASTAL KARNATAKA
	COTL ORS	COASTAL ORISSA
	GUJ	GUJARAT
	GWB	GANGETIC WEST BENGAL
	HARY	HARYANA
	DLH	DELHI
	HP	HIMACHAL PRADESH
	J&K	JAMMU AND KASHMIR
	JHRKND	JHARKHAND
	KER	KERALA
	KKN	KONKAN
	LKSDP	LAKSHADWEEP
	M MAHA	MADHYA MAHARASHTRA
	MAHA	MAHARASHTRA
	MANI	MANIPUR
	MEGHA	MEGHALAYA
	MIZO	MIZORAM
	MP	MADHYA PRADESH
	MRTHWD	MARATHWADA
	NAGA	NAGALAND
	N COTL AP	NORTH COASTAL ANDHRA PRADESH
	NIK	NORTH INTERIOR KARNATAKA
	ORS	ORISSA
	PJB	PUNJAB
RAJ	RAJASTHAN	
RYLSM	RAYALASEEMA	
SAU & KUTCH	SAURASHTRA & KUTCH	
SHWB	SUB-HIMALAYAN WEST BENGAL	
SIK	SOUTH INTERIOR KARNATAKA	
SKM	SIKKIM	
TLNGN	TELANGANA	
TN	TAMIL NADU	
TRP	TRIPURA	
UP	UTTAR PRADESH	

	UTRKND	UTTARAKHAND
	VID	VIDHARBHA
	SHWB	SUB HIMALAYAN WEST BENGAL
	GWB	GANGETIC WEST BENGAL
	ARSEA	ARABIAN SEA
	ILS	ISLANDS
MISCELLANEOUS	ASSW	IN ASSOCIATION WITH
	ASSTD	ASSOCIATED
	LLC	LOW LEVEL CIRCULATION
	EMBDD	EMBEDDED
	N/HOOD	NEIGHBOURHOOD
	EXT	EXTREME