

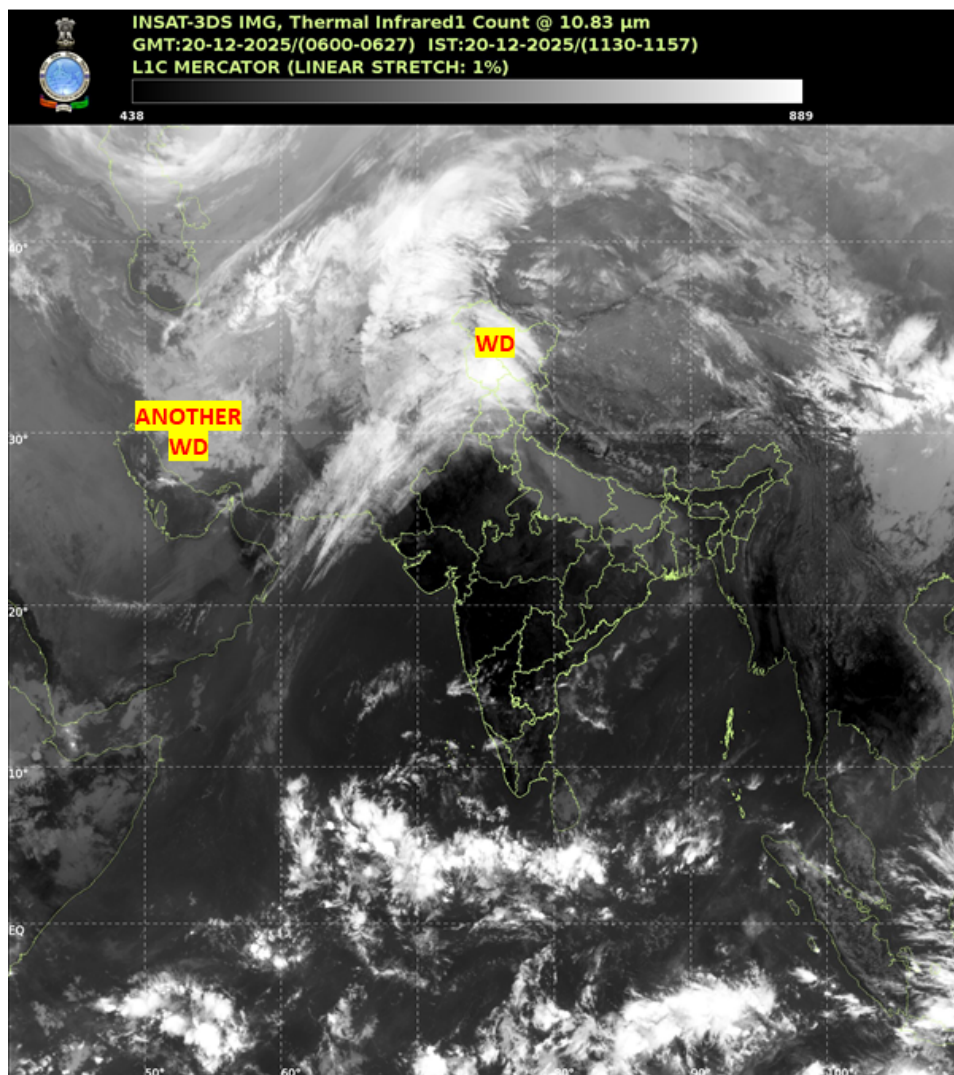


भारत मौसम विज्ञान विभाग
पृथ्वी विज्ञान मंत्रालय
India Meteorological Department
Ministry of Earth Sciences



SATELLITE BULLETIN BASED ON SATELLITE IMAGERIES AND PRODUCTS

Date: 2025-12-20 Time: 06:00:00 UTC



TCIN50 DEMS 200600

SATELLITE BULLETIN BASED ON INSAT-3DS PIC OF 200600 UTC (.)

REGION COVERED BETWEEN LAT 50.0°N TO 35.0°S AND LONG 40.0°E TO 125.0°E (.)

SALIENT FEATURES:

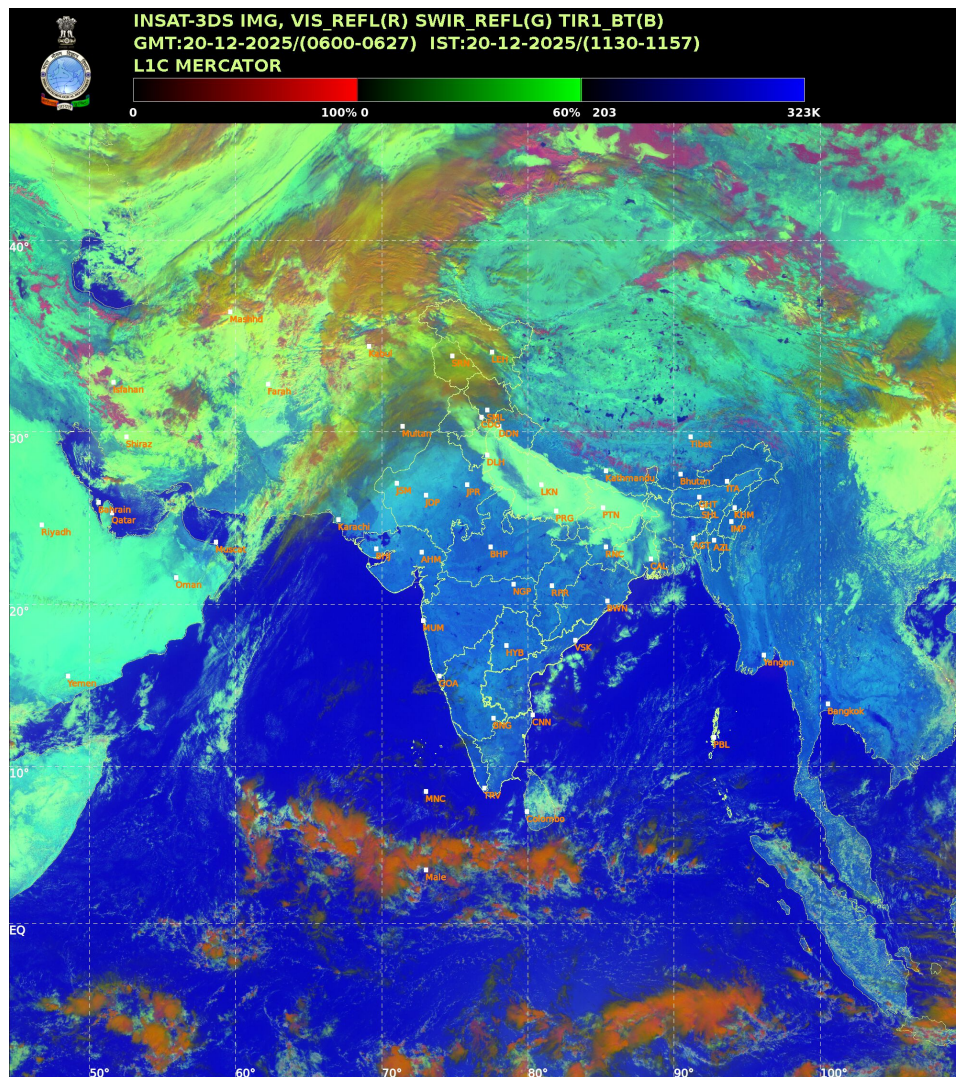
WESTERN DISTURBANCE (WD):-

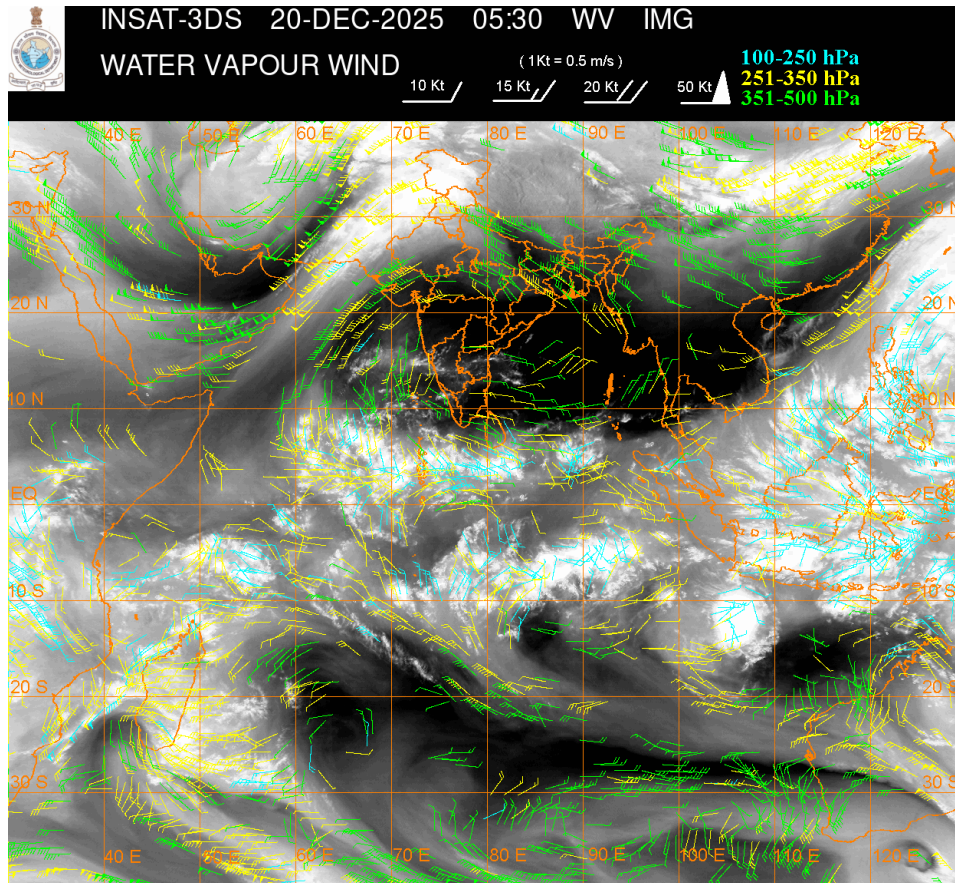
SCT MULTILAYERED CLOUDS OVER NORTH PAK LADAKH J&K HP PJB HARY AND N/HOOD IN ASSW
WD OVER THE AREA (.)

SCT TO BKN MULTILAYERED CLOUDS OVER IRAN AFGAN AND N/HOOD IN ASSW ANOTHER WD
OVER THE AREA (.)

FOG / LOW CLOUDS:-

**SCT TO BKN FOG / LOW CLOUDS OVER PJB S UTRKND HARY EXT NE RAJ DLH S NEPAL UP N MP
BHR JHRKND N CHTGH SHWB GWB W BD (.)**





CLOUD DESCRIPTION WITHIN INDIA:

NORTH:

SCT LOW/MED CLOUDS WITH EMBDD MOD TO INT CONVTN OVER LADAKH J&K HP N PJB AND WK TO MOD CONVTN OVER N UTRKND (.) SCT LOW/MED CLOUDS OVER S UTRKND HARY DLH UP (.)

EAST:

SCT LOW/MED CLOUDS WITH EMBDD ISOL WK CONVTN OVER SKM ARUPR (.) ISOL TO SCT LOW/MED CLOUDS OVER GWB REST NE STATES (.)

WEST:

SCT LOW/MED CLOUDS OVER W RAJ GOA (.)

SOUTH:

SCT LOW/MED CLOUDS WITH EMBDD MOD TO INT CONVTN OVER KRNTK LKSDP ILS AREA (.) SCT LOW/MED CLOUDS WITH EMBDD ISOL WK TO MOD CONVTN OVER KRNTK KER N TN & NICOBAR ILS AREA (.) SCT LOW/MED CLOUDS OVER COTL AP RYLSM KRNTK ANDAMAN ILS AREA (.)

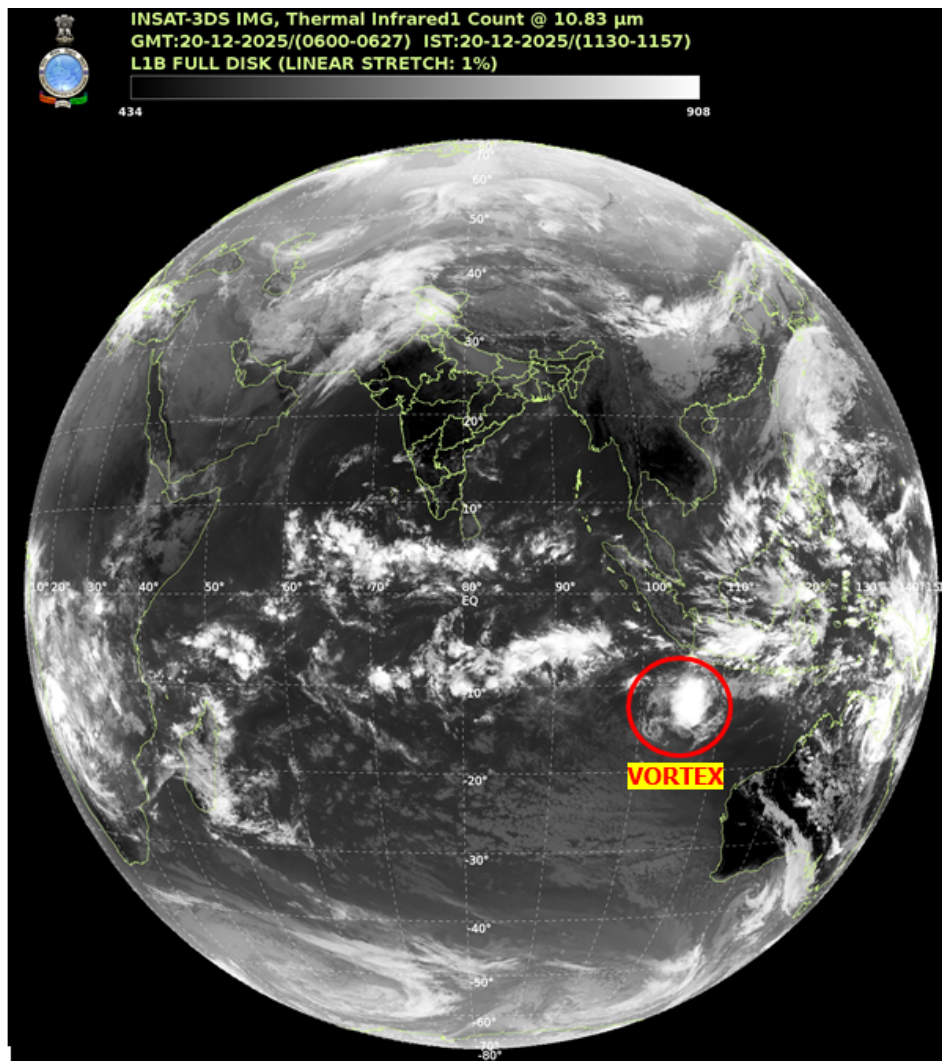
ARABIAN SEA:

SCT LOW/MED CLOUDS WITH EMBDD INT TO V INT CONVTN OVER CENTRAL PARTS OF SOUTH ARSEA SOUTH OF LAT 10N AND MOD TO INT CONVTN OVER SE ADJ EC ARSEA LKSDP ILS AREA MALDIVES AREA (.) SCT LOW/MED CLOUDS WITH EMBDD WK TO MOD CONVTN OVER NORTH WEST ARSEA (.)

BAY OF BENGAL & ANDAMAN SEA:

SCT LOW/MED CLOUDS WITH EMBDD MOD TO INT CONVTN OVER SOUTH BAY SOUTH OF LAT 10N (.)

CLOUD DESCRIPTION OUTSIDE INDIA:



VORTEX OVER SOUTH INDIAN OCEAN (SOUTH OF JAVA)

VORTEX OVER SOUTH INDIAN OCEAN (AREA G25 & G30) CENTERED NEAR 12.2S / 106.2E (.)
 INTENSITY T3.0/3.0 (.) MAXIMUM SUSTAINED WINDS 34-47 KTS (.) ASSTD SCT TO BKN LOW/MED
 CLOUDS WITH EMBDD INT TO V INT CONVTN OVER AREA BET LAT 8.0S TO 16.0S AND LONG 103.0E
 TO 110.0E (.)

SCT LOW/MED CLOUDS WITH EMBDD MOD TO INT CONVTN OVER MALDIVES N PAK TIBET CHINA
 YELLOW SEA EAST CHINA SEA SUMATRA STR OF MALACCA MALAYSIA BORNEO SOUTH CHINA SEA
 JAVA ILS & SEA CELEBES ILS & SEA PHILIPPINES SULU SEA MADAGASCAR MOZAMBIQUE
 CHANNEL AND OVER INDIAN OCEAN BET LAT 5.0N TO LAT 15.0S LONG 40.0E TO 110.0E AND BET
 LAT 5.0N TO LAT 35.0S LONG 40.0E TO 60.0E (.)

T00 20/1220 HRS IST=

NNNN

LEGEND

REGION	
NORTH	J&K HP UTRKND PJB HARY DLH UP
EAST	BHR JHRKND CHTGH ORS WB SKM NORTH-EAST STATES
WEST	RAJ MP GUJ MAHA GOA

SOUTH	TLNGN AP KRNTK KER TN LKSDP ANDAMAN & NICOBAR ILS
CLOUD DISTRIBUTION	
ISOL	ISOLATED (LESS THAN 25%)
SCT	SCATTERED (25 TO 50%)
BKN	BROKEN (51 TO 75%)
SLD	SOLID (GREATER THAN 75%)
CLOUDS TOP TEMPERATURE	
CTT	CLOUD TOP TEMPERATURE
CONVECTION	
WK CONVTN	WEAK CONVECTION (CTT GREATER THAN -25°C)
MOD CONVTN	MODERATE CONVECTION (CTT BETWEEN -25°C TO -40°C)
INT CONVTN	INTENSE CONVECTION (CTT BETWEEN -41°C TO -70°C)
V INT CONVTN	VERY INTENSE CONVECTION (CTT LESS THAN -70°C)
METEOROLOGICAL SUB-DIVISIONS, STATES & UNION TERRITORIES	
J&K	JAMMU AND KASHMIR
HP	HIMACHAL PRADESH
UTRKND	UTTARAKHAND
PJB	PUNJAB
HARY	HARYANA
DLH	DELHI
BHR	BIHAR
JHRKND	JHARKHAND
CHTGH	CHHATTISGARH
ORS	ORISSA
GWB	GANGETIC WEST BENGAL
SHWB	SUB-HIMALAYAN WEST BENGAL
SKM	SIKKIM
ARUPR	ARUNACHAL PRADESH
ASSAM	ASSAM
MEGHA	MEGHALAYA
MANI	MANIPUR
MIZO	MIZORAM
TRP	TRIPURA
RAJ	RAJASTHAN

MP	MADHYA PRADESH
GUJ	GUJARAT
SAU & KUTCH	SAURASHTRA & KUTCH
MAHA	MAHARASHTRA
M MAHA	MADHYA MAHARASHTRA
MRTHWD	MARATHWADA
VID	VIDARBHA
KKN	KONKAN
TLNGN	TELANGANA
RYLSM	RAYALSEEMA
COTL AP	COASTAL ANDHRA PRADESH
NIK	NORTH INTERIOR KARNATAKA
SIK	SOUTH INTERIOR KARNATAKA
COTL KRNTK	COASTAL KARNATAKA
KER	KERALA
TN	TAMILNADU
LKSDP	LAKSHADWEEP
ILS	ISLANDS
ARSEA	ARABIAN SEA
MISCELLANEOUS	
ASSW	IN ASSOCIATION WITH
ASSTD	ASSOCIATED
LLC	LOW LEVEL CIRCULATION
EMBDD	EMBEDDED
N/HOOD	NEIGHBOURHOOD
EXT	EXTREME