



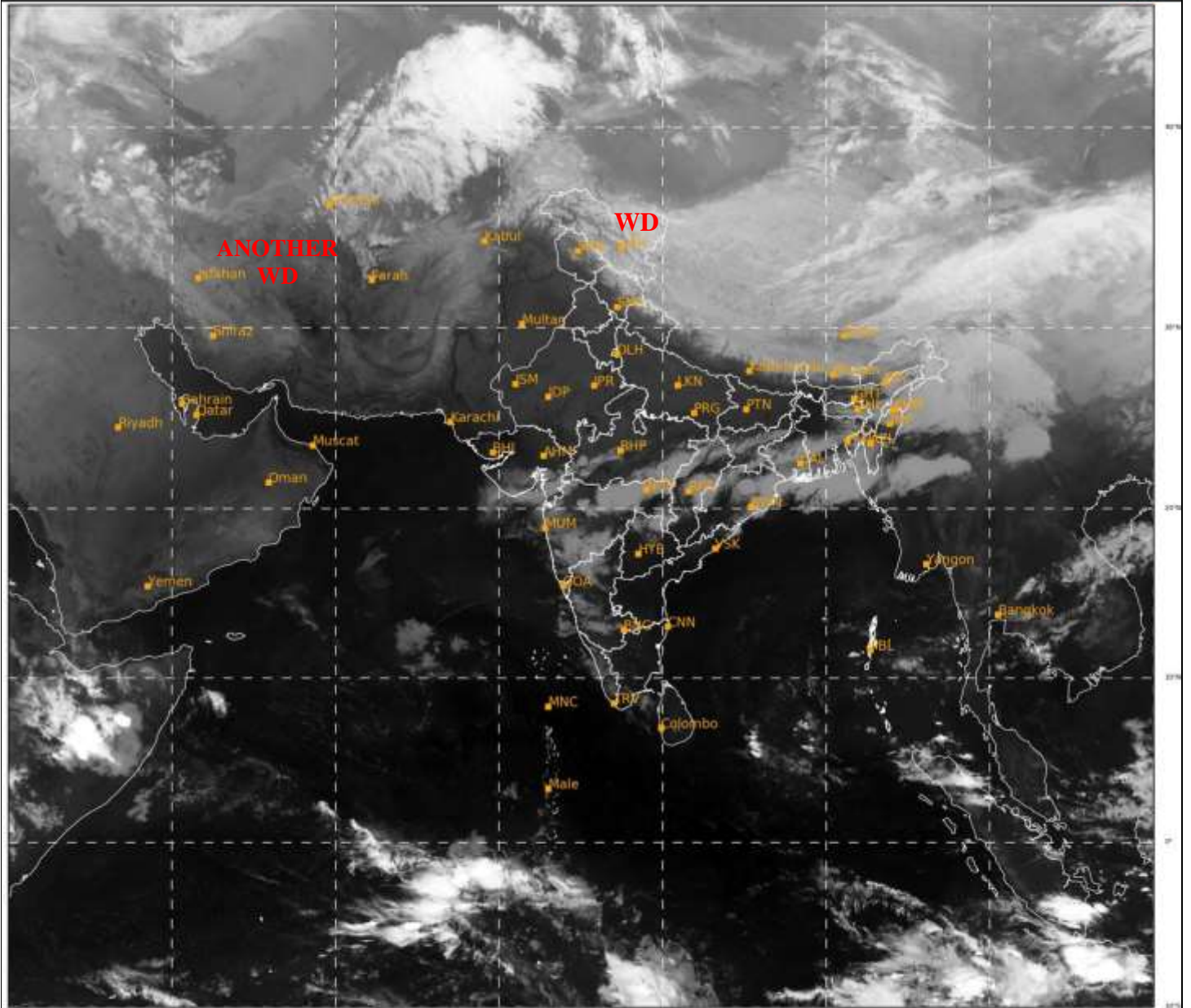
भारत मौसम विज्ञान विभाग
पृथ्वी विज्ञान मंत्रालय
India Meteorological Department
Ministry of Earth Sciences



**SATELLITE BULLETIN BASED ON SATELLITE
IMAGERIES AND PRODUCTS**
26.03.2022 TIME 0000 UTC

SAT : INSAT-3D IMG
IMG_TIR1 10.8 um
LIC Mercator

26-03-2022/(0000 to 0026) GMT
26-03-2022/(0530 to 0556) IST



504

933

IMD, DELHI

TCIN50 DEMS 260000

SATELLITE BULLETIN BASED ON INSAT-3D PIC OF 260000 UTC (.)

REGION COVERED BETWEEN LAT 50.0°N TO 30.0°S AND LONG 40.0°E TO 125.0°E (.)

SALIENT FEATURES:-

WESTERN DISTURBANCE (WD):-

SCT MULTILAYERED CLOUDS OVER N LADAKH N TIBET ADJ CHINA IN ASSW **WD** OVER THE AREA (.)

SCT MULTILAYERED CLOUDS OVER IRAN AND N/HOOD IN ASSW **ANOTHER WD** OVER THE AREA (.)

PRECIPITATION NOWCASTING:-

(BASED ON SCOPE NOWCASTING TOOL AT A LEAD TIME OF 180 MINUTES):-

RAINFALL UP TO **5 MM** OVER NE ARUPR (.)



INSAT-3D 26-MAR-2022 00:00 WV IMG

WATER VAPOUR WIND

(1Kt = 0.5 m/s)

100-250 hPa

251-350 hPa

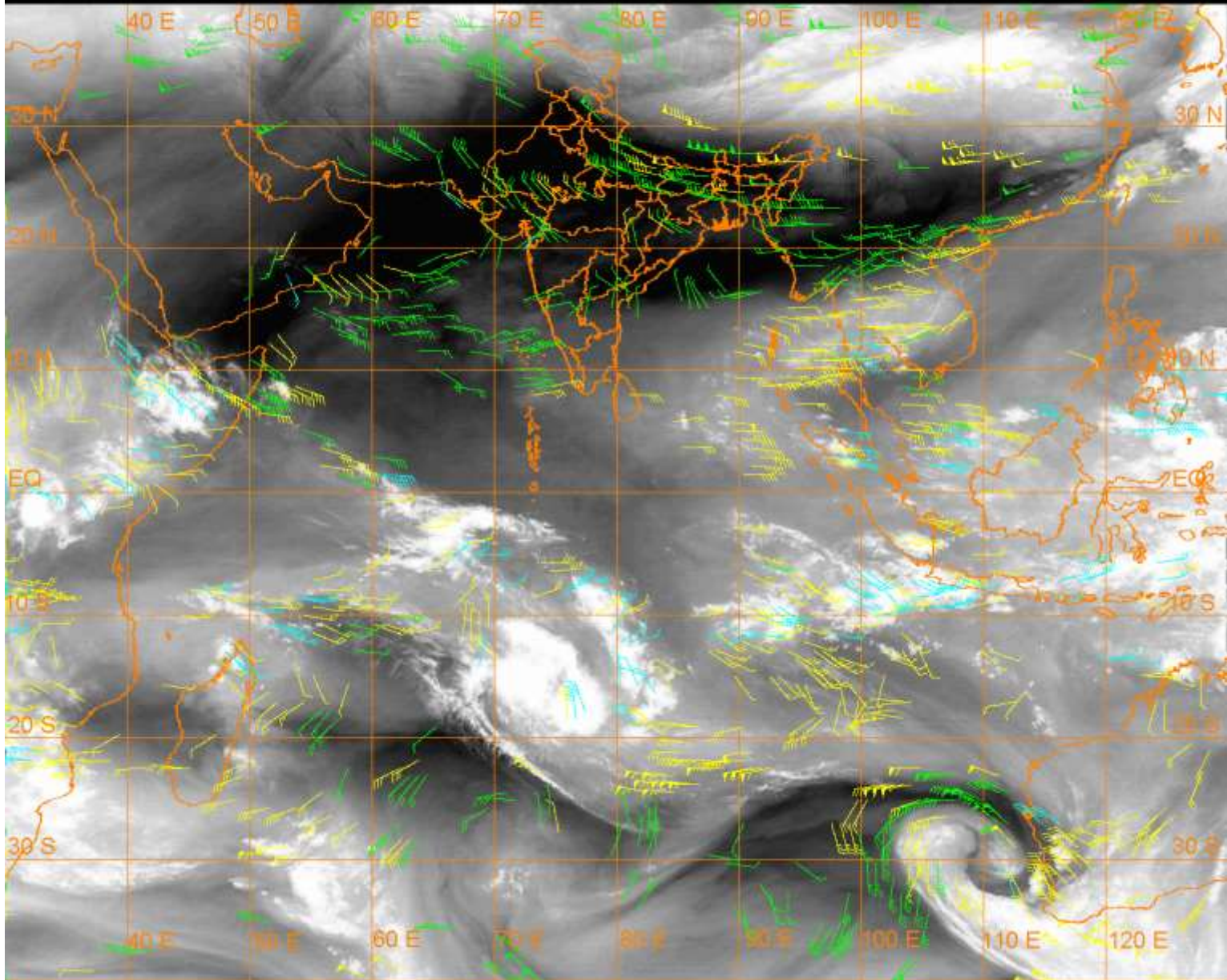
351-500 hPa

10 Kt

15 Kt

20 Kt

50 Kt



CLOUDS DESCRIPTION WITHIN INDIA:-

NORTH:-

SCT LOW/MED CLOUDS WITH EMBDD WK TO MOD CONVTN OVER LADAKH J&K N HP N UTRKND (.) ISOL TO SCT LOW/MED CLOUDS OVER S HP S UTRKND EXT S UP (.)

EAST:-

SCT LOW/MED CLOUDS WITH EMBDD WK CONVTN OVER JHRKND CHTGH ORS GWB N SHWB SKM ARUPR ASSAM MEGHA NAGA MANI MIZO TRP (.)

WEST:-

SCT LOW/MED CLOUDS WITH EMBDD WK CONVTN OVER MP MAHA S GUJ (.) SCT LOW/MED CLOUDS OVER RAJ REST GUJ (.)

SOUTH:-

SCT LOW/MED CLOUDS WITH EMBDD WK CONVTN OVER KRNTK KER N TLNGN EXT N COTL AP S TN (.) SCT LOW/MED CLOUDS OVER RYLSM S KER ANDAMAN AND NICOBAR ILS (.)

ARABIAN SEA:-

SCT LOW/MED CLOUDS WITH EMBDD WK TO MOD CONVTN OVER SE ARSEA OFF N KER-S KRNTK COAST AND SW ARSEA (.) SCT LOW/MED CLOUDS OVER CENTRAL & REST SOUTH ARSEA GULF OF CAMBAY (.)

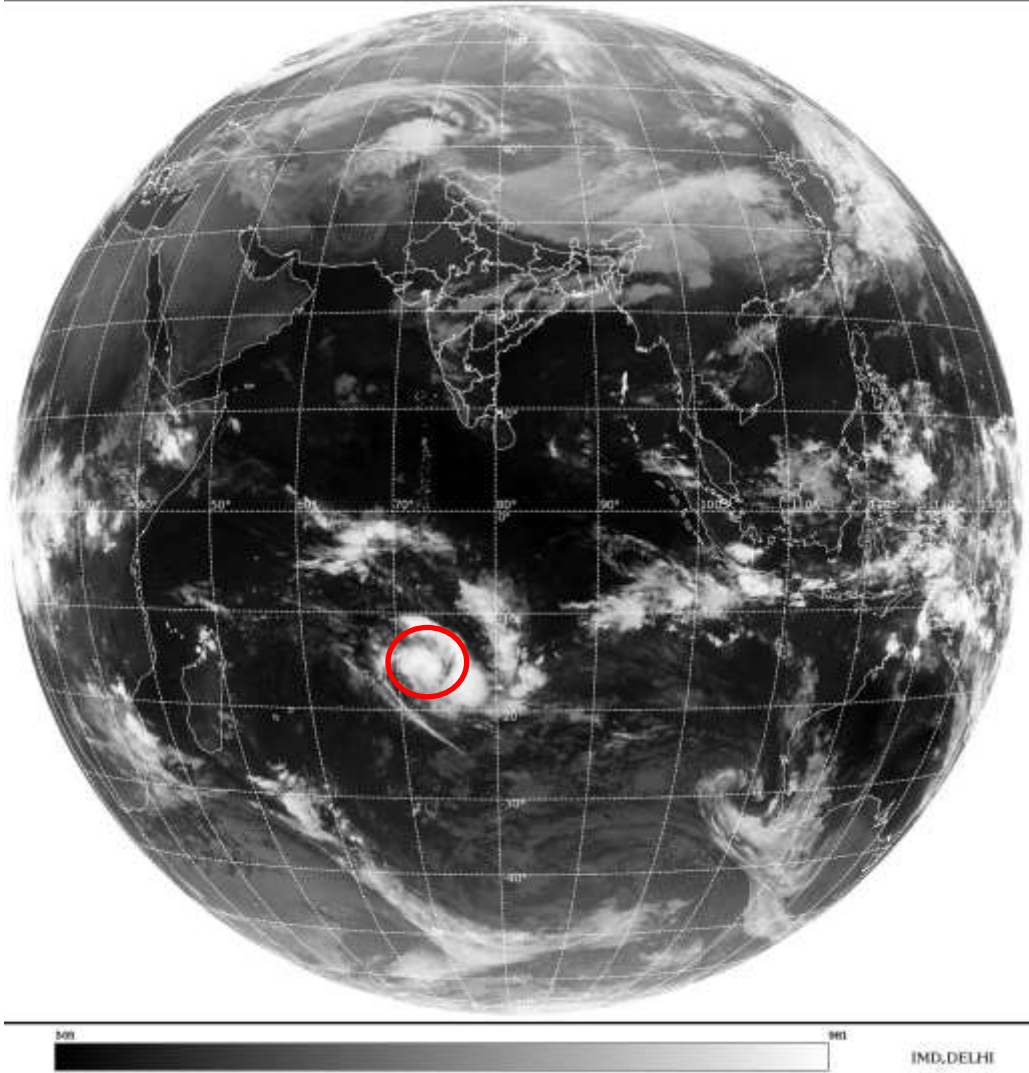
BAY OF BENGAL & ANDAMAN SEA:-

SCT LOW/MED CLOUDS WITH EMBDD MOD TO INT CONVTN OVER ANDAMAN SEA AND ISOL WK TO MOD CONVTN OVER SOUTH BAY (.)

CLOUDS DESCRIPTION OUTSIDE INDIA:

SAT : INSAT-3D IMG
Thermal Infrared1 Count 10.8 um
LIB FULL DISK

26-03-2022/(0000 to 0026) GMT
26-03-2022/(0530 to 0556) IST



VORTEX (HALIMA) OVER SOUTH INDIAN OCEAN:-

VORTEX (HALIMA) OVER SOUTH INDIAN OCEAN CENTERED NEAR 15.2S / 73.1E (.) INTENSITY T5.0/6.0 (.) ASSTD BKN LOW/MED CLOUDS WITH EMBDD INT TO V INT CONVTN OVER AREA BET LAT 10.0S TO 17.0S LONG 67.0E TO 75.0E (.)

SCT LOW/MED CLOUDS WITH EMBDD MOD TO INT CONVTN OVER N SRI LANKA PALK STR GULF OF MANNAR TIBET CHINA YELLOW SEA E CHINA SEA TAIWAN S MYANMAR THAILAND GULF OF THAILAND LAOS VIETNAM SUMATRA STR OF MALACCA MALAYSIA BORNEO JAVA ILS & SEA CELEBES ILS & SEA S PHILIPPINES SULU SEA MADAGASCAR AND OVER INDIAN OCEAN BET LAT 5.0N TO 25.0S LONG 45.0E TO 70.0E AND BET EQ TO LAT 20.0S LONG 60.0E TO 120.0E (.)

TOO 26/0640 HRS IST=

NNNN

LEGEND:-

REGION	NORTH	J&K HP PJB HARY DLH UP UTRKND
	EAST	BHR JHRKND CHTGH OR WB SKM NORTH- EAST STATES
	WEST	RAJ MP GUJ MAHA GOA

	SOUTH	TLNGN AP KRNTK KER TN LKSDP ANDAMAN & NICOBAR ILS
--	--------------	--

CLOUD DISTRIBUTION	ISOL	ISOLATED (LESS THAN 25%)	
	SCT	SCATTERED (25 TO 50%)	
	BKN	BROKEN (51 TO 75%)	
	SLD	SOLID (GREATER THAN 75%)	
CLOUDS TOP TEMPERATURE	CTT	CLOUD TOP TEMPERATURE	
CONVECTION	WK CONVTN	WEAK CONVECTION (CTT GREATER THAN -25°C)	
	MOD CONVTN	MODERATE CONVECTION (CTT BETWEEN -25°C TO -40°C)	
	INT CONVTN	INTENSE CONVECTION (CTT BETWEEN -41°C TO -70°C)	
	V INT CONVTN	VERY INTENSE CONVECTION (CTT LESS THAN -70°C)	
METEOROLOGICAL SUB-DIVISIONS, STATES & UNION TERRITORIES	ARUPR	ARUNACHAL PRADESH	
	BHR	BIHAR	
	CHTGH	CHHATTISGARH	
	COTL AP	COASTAL ANDHRA PRADESH	
	COTL KRNTK	COASTAL KARNATAKA	
	COTL ORS	COASTAL ORISSA	
	GUJ	GUJARAT	
	GWB	GANGETIC WEST BENGAL	
	HARY	HARYANA	
	DLH	DELHI	
	HP	HIMACHAL PRADESH	
	J&K	JAMMU AND KASHMIR	
	JHRKND	JHARKHAND	
	KER	KERALA	
	KKN	KONKAN	
	LKSDP	LAKSHADWEEP	
	M MAHA	MADHYA MAHARASHTRA	
	MAHA	MAHARASHTRA	
	MANI	MANIPUR	
	MEGHA	MEGHALAYA	
	MIZO	MIZORAM	
	MP	MADHYA PRADESH	
		MRTHWD	MARATHWADA
		NAGA	NAGALAND
N COTL AP		NORTH COASTAL ANDHRA PRADESH	
NIK		NORTH INTERIOR KARNATAKA	
ORS		ORISSA	
PJB		PUNJAB	
RAJ		RAJASTHAN	
RYLSM		RAYALASEEMA	
SAU & KUTCH		SAURASHTRA & KUTCH	
SHWB		SUB-HIMALAYAN WEST BENGAL	

	SIK	SOUTH INTERIOR KARNATAKA
	SKM	SIKKIM
	TLNGN	TELANGANA
	TN	TAMIL NADU
	TRP	TRIPURA
	UP	UTTAR PRADESH
	UTRKND	UTTARAKHAND
	VID	VIDHARBHA
	SHWB	SUB HIMALAYAN WEST BENGAL
	GWB	GANGETIC WEST BENGAL
	ARSEA	ARABIAN SEA
	ILS	ISLANDS
MISCELLANEOUS	ASSW	IN ASSOCIATION WITH
	ASSTD	ASSOCIATED
	LLC	LOW LEVEL CIRCULATION
	EMBDD	EMBEDDED
	N/HOOD	NEIGHBOURHOOD
	EXT	EXTREME