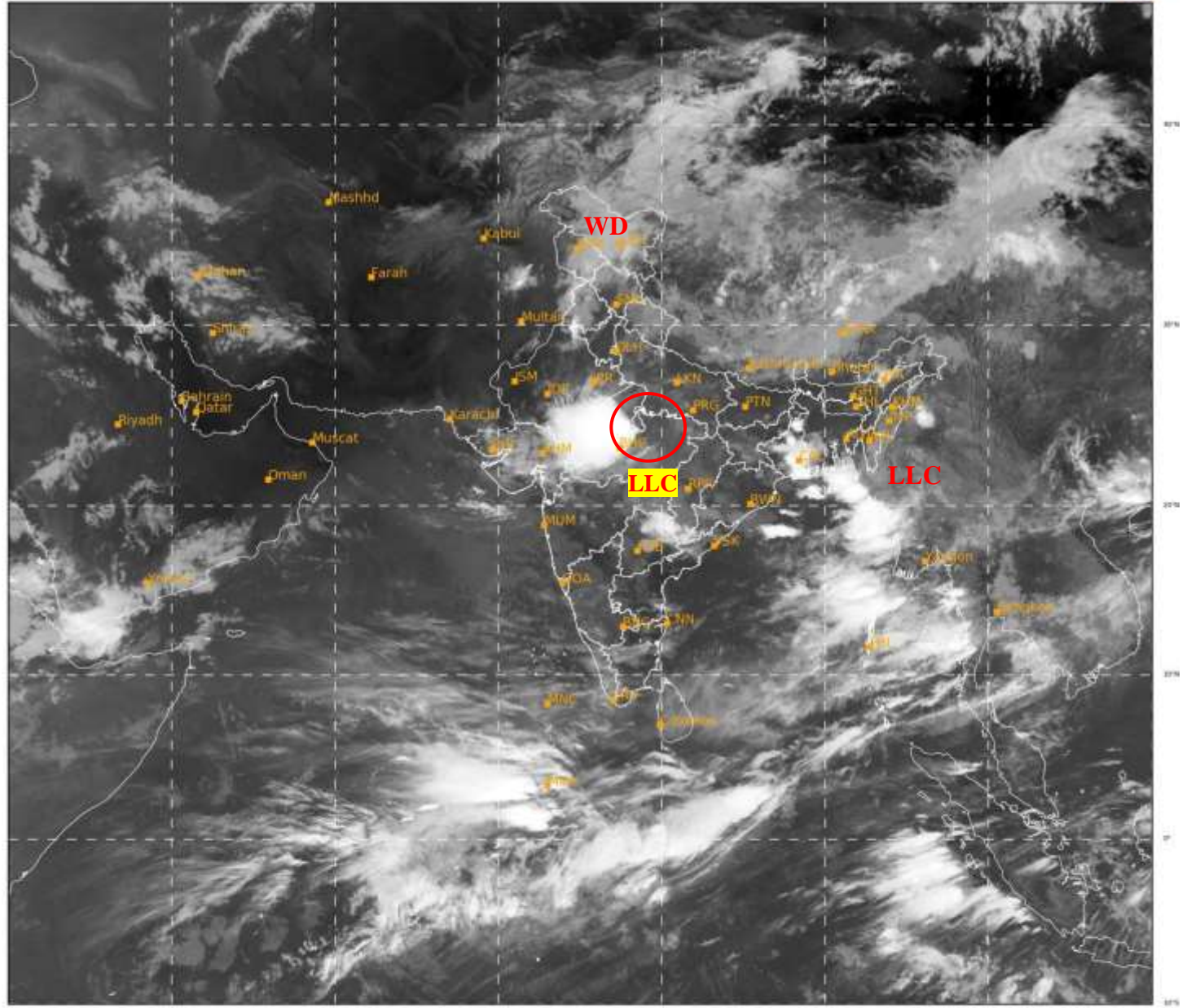




SATELLITE BULLETIN BASED ON SATELLITE
IMAGERIES AND PRODUCTS
06.08.2021 TIME 0300 UTC

SAT : INSAT-3D IMG
IMG_TIR1 10.8 um
LIC Mercator

06-08-2021/(0300 to 0327) GMT
06-08-2021/(0830 to 0857) IST



300

924

IMD, DELHI

TCIN50 DEMS 060300

SATELLITE BULLETIN BASED ON INSAT-3D PIC OF 060300 UTC (.)

REGION COVERED BETWEEN LAT 50.0°N TO 30.0°S AND LONG 40.0°E TO 125.0°E (.)

SALIENT FEATURES:-

LLC OVER CENTRAL PARTS OF N MP ADJ SW UP AND N/HOOD:-

LLC OVER CENTRAL PARTS OF N MP ADJ SW UP & N/HOOD (.) ASSTD SCT LOW/MED CLOUDS WITH EMBDD INT TO V INT CONVTN OVER W MP ADJ E RAJ (MINIMUM CTT MINUS 90 DEG C) AND ISOL WK TO MOD TO INT CONVTN OVER SW UP NE MP (.)

WESTERN DISTURBANCE (WD):-

SCT MULTILAYERED CLOUDS OVER N PAK J&K HP PJB LADAKH & N/HOOD IN ASSW **WD** OVER THE AREA (.)



INSAT-3D 06-AUG-2021 03:00 WV IMG

WATER VAPOUR WIND

(1Kt = 0.5 m/s)

10 Kt

15 Kt

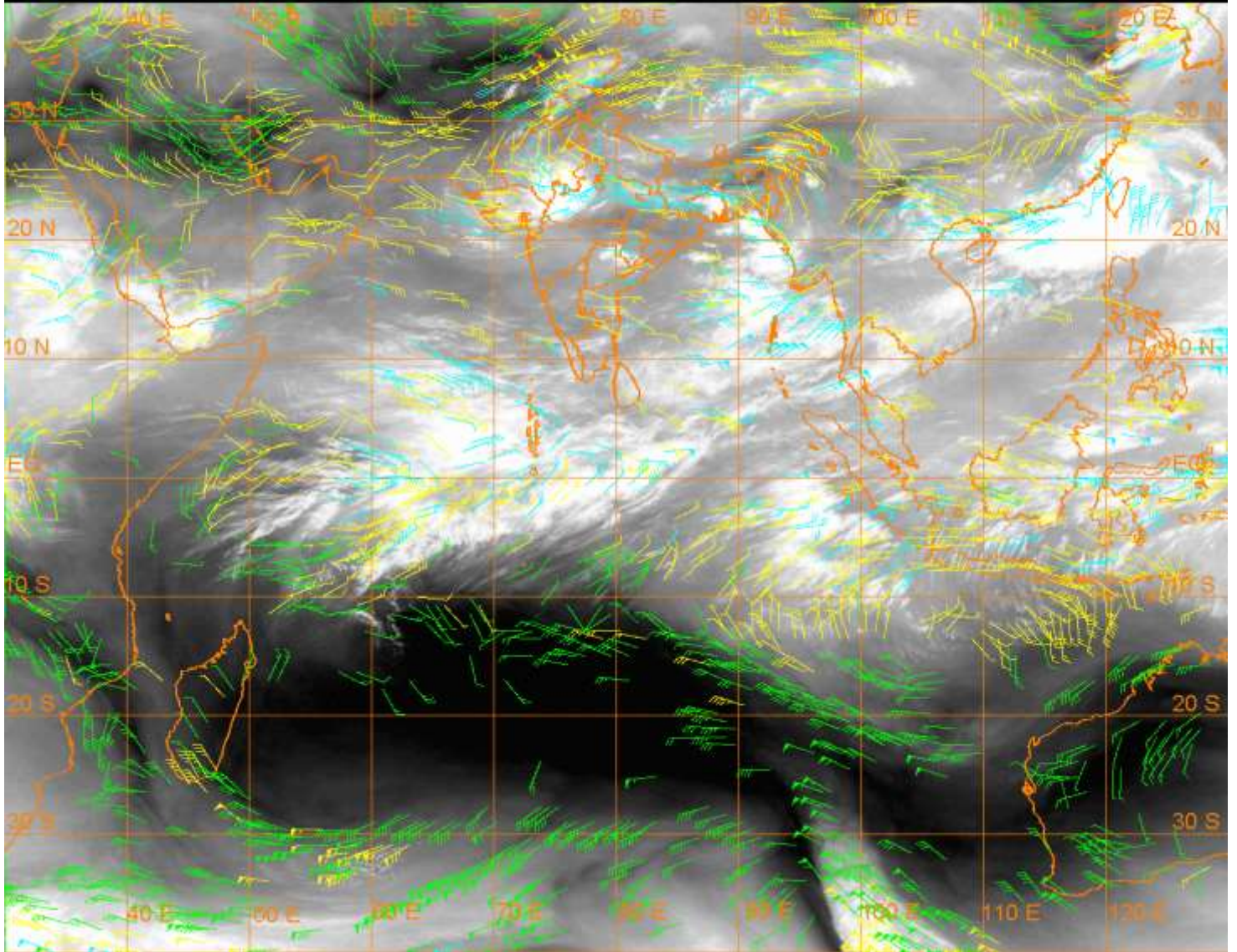
20 Kt

50 Kt

100-250 hPa

251-350 hPa

351-500 hPa



CLOUDS DESCRIPTION WITHIN INDIA:-

NORTH:-

SCT LOW/MED CLOUDS WITH EMBDD MOD TO INT CONVTN OVER LADAKH J&K N HP PJB ADJ WC HARY AND WK TO MOD CONVTN OVER S HP UTRKND REST UP (.) SCT LOW/MED CLOUDS OVER REST HARY DLH (.)

EAST:-

SCT LOW/MED CLOUDS WITH EMBDD MOD TO INT CONVTN OVER EXTREME S CHTGH ADJ SW ORS GWB ARUPR BD AND ISOL WK TO MOD CONVTN OVER REST CHTGH REST ORS JHRKND SKM NE ASSAM MANI MIZO (.) SCT LOW/MED CLOUDS OVER BHR SHWB REST NE STATES (.)

WEST:-

BKN LOW/MED CLOUDS WITH EMBDD INT TO V INT CONVTN OVER W MP ADJ E RAJ (MINIMUM CTT 90 DEG C) (.) SCT LOW/MED CLOUDS WITH EMBDD MOD TO INT CONVTN OVER GUJ C MP SE VID AND ISOL WK TO MOD CONVTN OVER N RAJ E MP REST VID EXTREME NORTH MADHYA MAHA (.) SCT LOW/MED CLOUDS OVER REST RAJ & GOA (.)

SOUTH:-

SCT LOW/MED CLOUDS WITH EMBDD MOD TO INT CONVTN OVER N COTL AP TLNGN ANDAMAN & NICOBAR ILS (.) SCT LOW/MED CLOUDS WITH EMBDD ISOL WK TO MOD CONVTN OVER S COTL AP KER TN LKSDP (.) SCT LOW/MED CLOUDS OVER RYLSM KRNTK (.)

ARABIAN SEA:-

SCT LOW/MED CLOUDS WITH EMBDD MOD TO INT CONVTN OVER SE ARSEA SOUTH OF LAT 10.0N & ADJ EQUATORIAL INDIAN OCEAN (.)

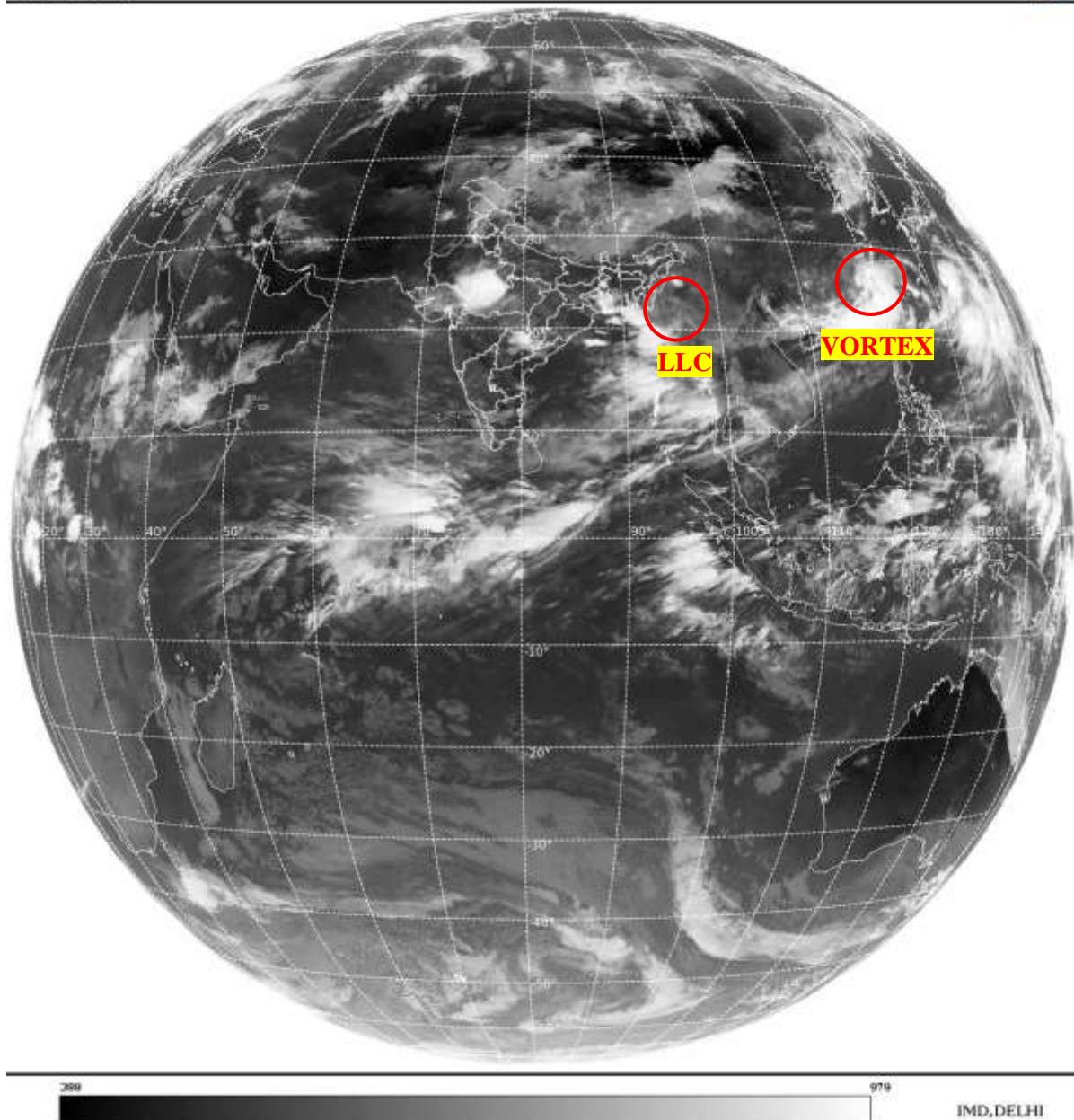
BAY OF BENGAL & ANDAMAN SEA:-

SCT LOW/MED CLOUDS WITH EMBDD INT TO V INT CONV TN OVER N BAY EC BAY ARAKAN COAST ANDAMAN SEA AND MOD TO INT CONV TN OVER S BAY (.)

CLOUDS DESCRIPTION OUTSIDE INDIA:-

SAT : INSAT-3D IMG
Thermal Infrared1 Count 10.8 um
LIB FULL DISK

06-08-2021/(0300 to 0327) GMT
06-08-2021/(0830 to 0857) IST



VORTEX (LUPIT) OVER SOUTH CHINA SEA ADJ SE CHINA:-

VORTEX (**LUPIT**) OVER SOUTH CHINA SEA ADJ SE CHINA & N/HOOD CENTERED NEAR **24.5N/118.2E** (.) **OVERLAND** (.) ASSTD BKN LOW/MED CLOUDS WITH EMBDD INT TO V INT CONV TN OVER AREA BET LAT 20.0N TO 28.0N LONG 115.0E TO 123.0E & TAIWAN (.)

LLC OVER CENTRAL MYANMAR & NOOD:-

BKN LOW/MED CLOUDS WITH EMBDD MOD TO INT CONV TN OVER C MYANMAR & N/HOOD IN ASSW LOW LEVEL CIRCULATION (**LLC**) OVER THE AREA (.)

SCT LOW/MED CLOUDS WITH EMBDD MOD TO INT CONV TN OVER MALDIVES TIBET CHINA MYANMAR THAILAND GULF OF THAILAND CAMBODIA VIETNAM SUMATRA STR OF MALACCA BORNEO S CHINA SEA JAVA SEA CELEBES ILS & SEA TAIWAN E CHINA SEA YELLOW SEA AND OVER INDIAN OCEAN BET LAT 5.0N TO 10.0S LONG 60.0E TO 100.0E (.)

TOO 06/0940EF=

NNNN

LEGEND:-

REGION	NORTH	J&K HP PJB HARY DLH UP UTRKND
	EAST	BHR JHRKND CHTGH ORS WB SKMNORTH- EAST STATES
	WEST	RAJ MP GUJ MAHA GOA
	SOUTH	TLNGN AP KRNTK KER TN LKSDP ANDAMAN & NICOBAR ILS

CLOUD DISTRIBUTION	ISOL	ISOLATED (LESS THAN 25%)	
	SCT	SCATTERED (25 TO 50%)	
	BKN	BROKEN (51 TO 75%)	
	SLD	SOLID (GREATER THAN 75%)	
CLOUDS TOP TEMPERATURE	CTT	CLOUD TOP TEMPERATURE	
CONVECTION	WK CONVTN	WEAK CONVECTION (CTT GREATER THAN -25°C)	
	MOD CONVTN	MODERATE CONVECTION (CTT BETWEEN -25°C TO -40°C)	
	INT CONVTN	INTENSE CONVECTION (CTT BETWEEN -41°C TO -70°C)	
	V INT CONVTN	VERY INTENSE CONVECTION (CTT LESS THAN -70°C)	
METEOROLOGICAL SUB-DIVISIONS, STATES & UNION TERRITORIES	ARUPR	ARUNACHAL PRADESH	
	BHR	BIHAR	
	CHTGH	CHHATTISGARH	
	COTL AP	COASTAL ANDHRA PRADESH	
	COTL KRNTK	COASTAL KARNATAKA	
	COTL ORS	COASTAL ORISSA	
	GUJ	GUJARAT	
	GWB	GANGETIC WEST BENGAL	
	HARY	HARYANA	
	DLH	DELHI	
	HP	HIMACHAL PRADESH	
	J&K	JAMMU AND KASHMIR	
	JHRKND	JHARKHAND	
	KER	KERALA	
	KKN	KONKAN	
	LKSDP	LAKSHADWEEP	
	M MAHA	MADHYA MAHARASHTRA	
	MAHA	MAHARASHTRA	
	MANI	MANIPUR	
	MEGHA	MEGHALAYA	
	MIZO	MIZORAM	
	MP	MADHYA PRADESH	
		MRTHWD	MARATHWADA
		NAGA	NAGALAND
N COTL AP		NORTH COASTAL ANDHRA PRADESH	

	NIK	NORTH INTERIOR KARNATAKA
	ORS	ORISSA
	PJB	PUNJAB
	RAJ	RAJASTHAN
	RYLSM	RAYALASEEMA
	SAU & KUTCH	SAURASHTRA & KUTCH
	SHWB	SUB-HIMALAYAN WEST BENGAL
	SIK	SOUTH INTERIOR KARNATAKA
	SKM	SIKKIM
	TLNGN	TELANGANA
	TN	TAMIL NADU
	TRP	TRIPURA
	UP	UTTAR PRADESH
	UTRKN	UTTARAKHAND
	VID	VIDHARBHA
	SHWB	SUB HIMALAYAN WEST BENGAL
	GWB	GANGETIC WEST BENGAL
	ARSEA	ARABIAN SEA
	ILS	ISLANDS
MISCELLANEOUS	ASSW	IN ASSOCIATION WITH
	ASSTD	ASSOCIATED
	LLC	LOW LEVEL CIRCULATION
	EMBDD	EMBEDDED
	N/HOOD	NEIGHBOURHOOD
	EXT	EXTREME