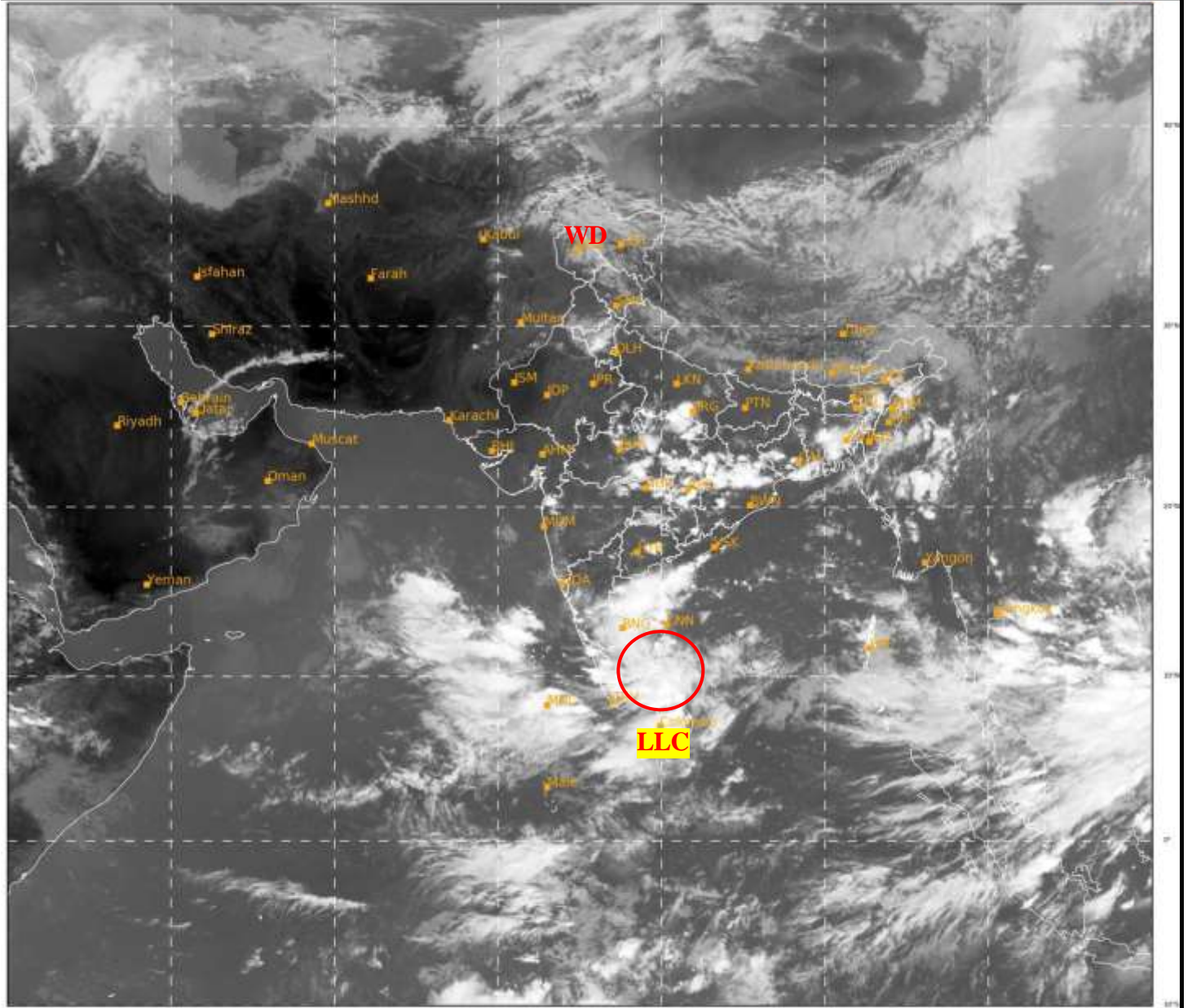




SATELLITE BULLETIN BASED ON SATELLITE
IMAGERIES AND PRODUCTS
05.10.2021 TIME 0900 UTC

SAT : INSAT-3D IMG
IMG_TIR1 10.8 um
LIC Mercator

05-10-2021/(0900 to 0926) GMT
05-10-2021/(1430 to 1456) IST



304

947

IMD,DELHI

TCIN50 DEMS 050900

SATELLITE BULLETIN BASED ON INSAT-3D PIC OF 050900 UTC (.)

REGION COVERED BETWEEN LAT 50.0°N TO 30.0°S AND LONG 40.0°E TO 125.0°E (.)

SALIENT FEATURES:-

LLC OVER COASTL TN ADJ SW BAY & N/HOOD:-

LOW LEVEL CIRCULATION (LLC) OVER COASTL TN ADJ SW BAY & N/HOOD (.) ASSTD BKN LOW/MED CLOUDS WITH EMBDD INT TO V INT CONVTN OVER COASTL TN ADJ SW BAY SRI LANKA & N/HOOD (.) (MINIMUM CTT MINUS 84 DEG C)

WESTERN DISTURBANCE:-

SCT MULTILAYERED CLOUDS OVER N PAK J&K LADAKH PJB N HARY HP TIBET & N/HOOD IN ASSW **WD** OVER THE AREA (.)



INSAT-3D 05-OCT-2021 09:00 WV IMG

WATER VAPOUR WIND

(1Kt = 0.5 m/s)

10 Kt

15 Kt

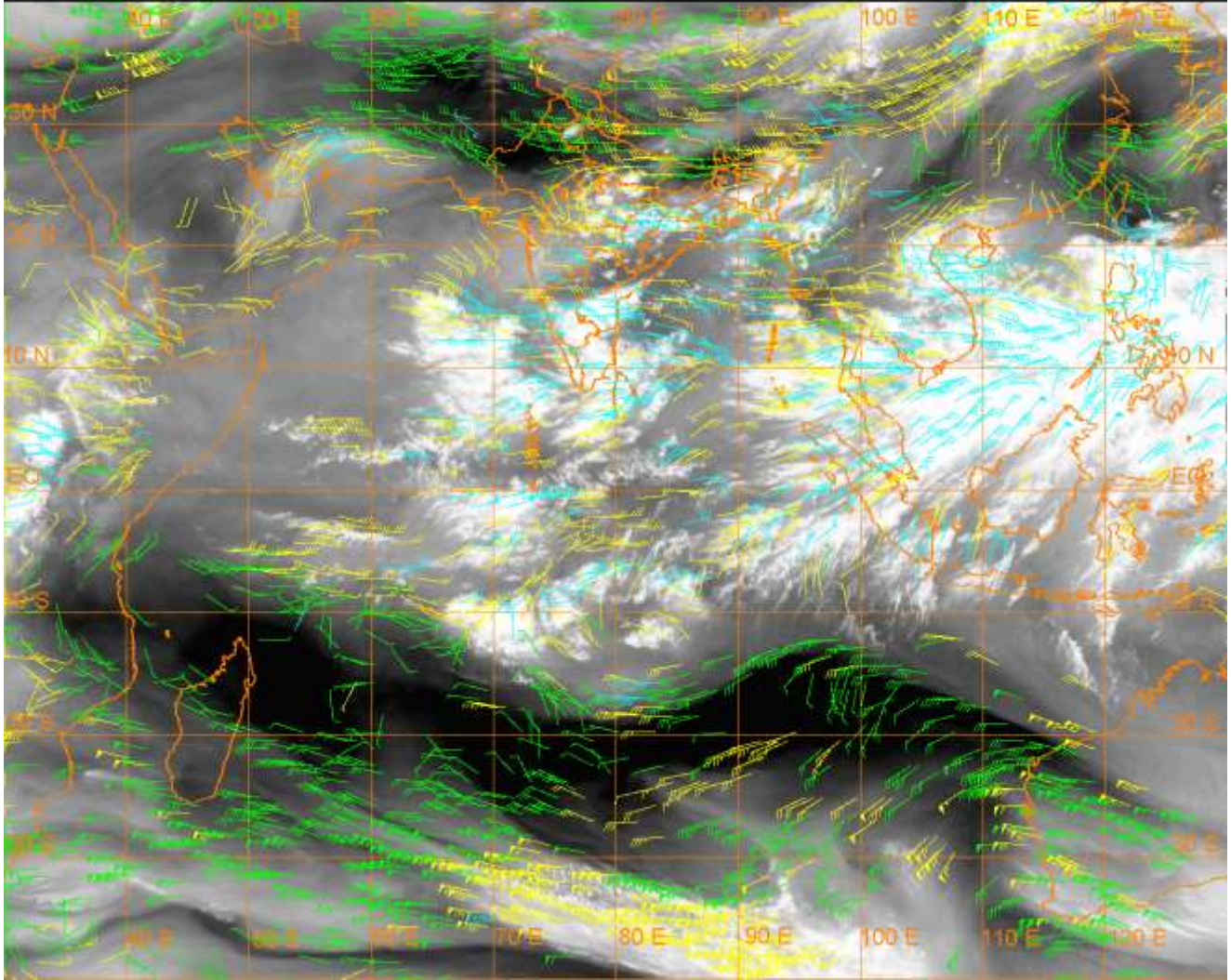
20 Kt

50 Kt

100-250 hPa

251-350 hPa

351-500 hPa



CLOUDS DESCRIPTION WITHIN INDIA:-

NORTH:-

SCT LOW/MED CLOUDS WITH EMBDD INT TO V INT CONVTN OVER SC UP AND MOD TO INT CONVTN OVER SC HARY (.) SCT LOW/MED CLOUDS WITH EMBDD WK TO MOD CONVTN OVER LADAKH J&K HP UTRKND S PJB W HARY REST S UP (.)SCT LOW/MED CLOUDS OVER N PJB SE HARY DLH N UP (.)

EAST:-

SCT LOW/MED CLOUDS WITH EMBDD INT TO V INT CONVTN OVER C ADJ N CHTGH S JHRKND N& EXT SW ORS S GWB (.) SCT LOW/MED CLOUDS WITH EMBDD MOD TO INT CONVTN OVER E ASSAM NAGA MIZO TRP EXT W ARUPR (.) SCT LOW/MED CLOUDS WITH EMBDD WK TO MOD CONVTN OVER REST SW ORS REST CHTGH N JHRKND EXT N GWB SKM MEGHA REST ARUPR MANI (.) SCT LOW/MED CLOUDS OVER BHR REST N GWB SHWB (.)

WEST:-

SCT LOW/MED CLOUDS WITH EMBDD INT TO V INT CONVTN OVER E MP N VID (MINIMUM CTT MINUS 85 DEG C) (.) SCT LOW/MED CLOUDS WITH EMBDD MOD TO INT CONVTN OVER EXT SE GUJ ADJ N KKN NW MP (.)SCT LOW/MED CLOUDS WITH EMBDD ISOL WK TO MOD CONVTN OVER EXT N RAJ REST N KKN (.) SCT LOW/MED CLOUDS OVER E RAJ REST MP REST GUJ REST MAHA & GOA (.)

SOUTH:-

SCT TO BKN LOW/MED CLOUDS WITH EMBDD INT TO V INT CONVTN OVER E RYLSM SE TLNGN TN S COTL AP KER (MINIMUM CTT MINUS 90 DEG C) (.) SCT LOW/MED CLOUDS WITH EMBDD MOD TO INT CONVTN OVER W RYLSM N TLNGN EXT NE NIK (.) SCT LOW/MED CLOUDS WITH EMBDD WK TO MOD CONVTN OVER W NIK ANDAMAN & NICOBAR ILS (.) SCT LOW/MED CLOUDS OVER REST PARTS OF THE REGION (.)

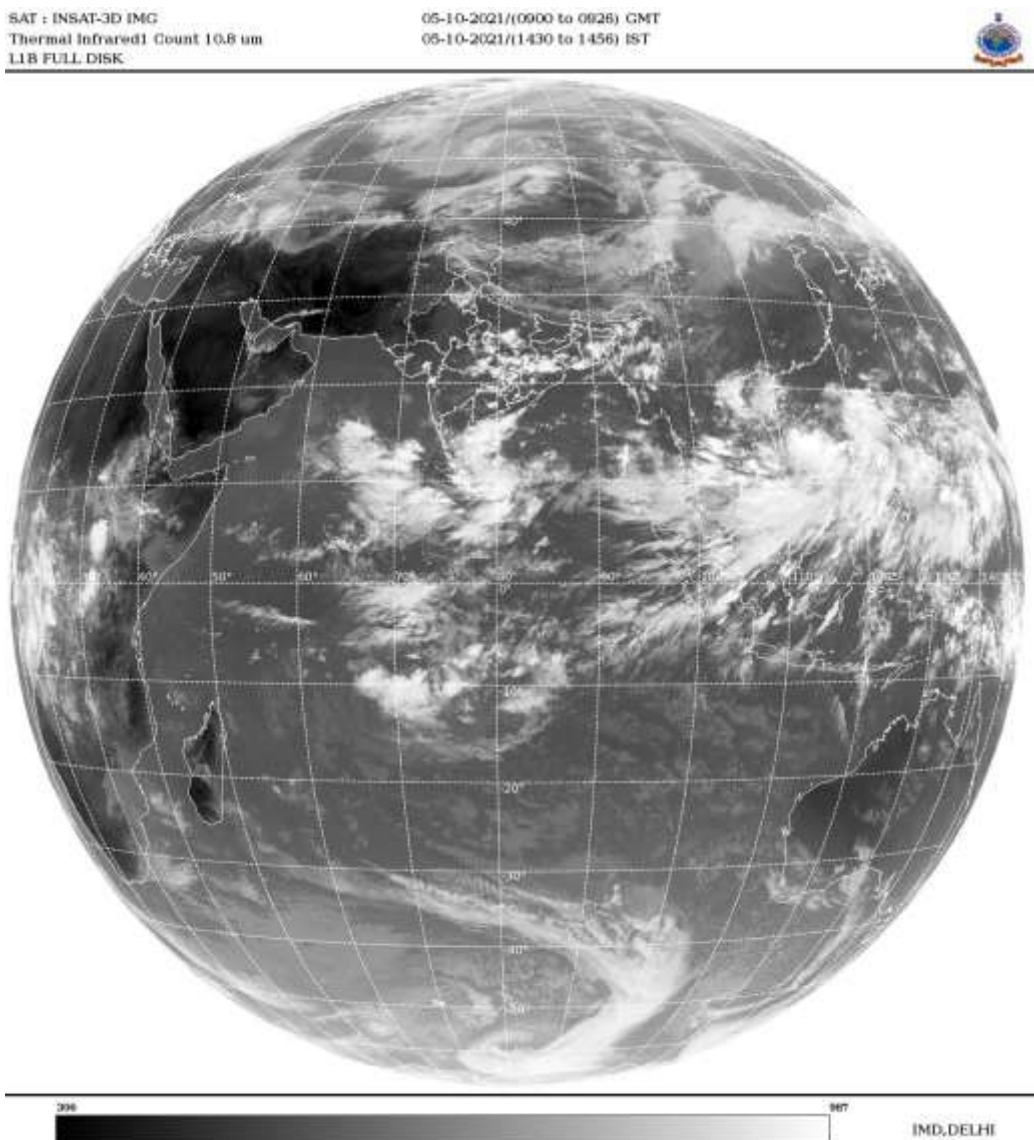
ARABIAN SEA:-

SCT LOW/MED CLOUDS WITH EMBDD INT TO V INT CONVTN OVER SE ADJ EC ARSEA AND MOD TO INT CONVTN OVER COMORIN (.)

BAY OF BENGAL & ANDAMAN SEA:-

SCT LOW/MED CLOUDS WITH EMBDD MOD TO INT CONVTN OVER SOUTH BAY ANDAMAN SEA (.)SCT LOW/MED CLOUDS WITH EMBDD WK TO MOD CONVTN OVER NORTH BAY (.)

CLOUDS DESCRIPTION OUTSIDE INDIA:-



SCT LOW/MED CLOUDS WITH EMBDD MOD TO INT CONVTN OVER SRI LANKA GULF OF MANNAR PALK STR W NEPAL BHUTAN N MALDIVES TIBET CHINA YELLOW SEA S MYANMAR THAILAND GULF OF THAILAND CAMBODIA LAOS VIETNAM GULF OF TONKIN HAINAN SUMATRA STR OF MALACCA MALAY PENINSULA BORNEO SOUTH CHINA SEA W JAVA ILS & SEA CELEBES ILS & SEA PHILIPPINES SULU SEA AND OVER INDIAN OCEAN BET 5.0N TO 15.5S LONG 51.0E TO 106.0E (.)

TOO 05/1540EF=

NNNN

LEGEND:-

REGION	NORTH	J&K HP PJB HARY DLH UP UTRKND
	EAST	BHR JHRKND CHTGH ORS WB SKMNORTH- EAST STATES
	WEST	RAJ MP GUJ MAHA GOA

	SOUTH	TLNGN AP KRNTK KER TN LKSDP ANDAMAN & NICOBAR ILS
--	--------------	--

CLOUD DISTRIBUTION	ISOL	ISOLATED (LESS THAN 25%)	
	SCT	SCATTERED (25 TO 50%)	
	BKN	BROKEN (51 TO 75%)	
	SLD	SOLID (GREATER THAN 75%)	
CLOUDS TOP TEMPERATURE	CTT	CLOUD TOP TEMPERATURE	
CONVECTION	WK CONVTN	WEAK CONVECTION (CTT GREATER THAN -25°C)	
	MOD CONVTN	MODERATE CONVECTION (CTT BETWEEN -25°C TO -40°C)	
	INT CONVTN	INTENSE CONVECTION (CTT BETWEEN -41°C TO -70°C)	
	V INT CONVTN	VERY INTENSE CONVECTION (CTT LESS THAN -70°C)	
METEOROLOGICAL SUB-DIVISIONS, STATES & UNION TERRITORIES	ARUPR	ARUNACHAL PRADESH	
	BHR	BIHAR	
	CHTGH	CHHATTISGARH	
	COTL AP	COASTAL ANDHRA PRADESH	
	COTL KRNTK	COASTAL KARNATAKA	
	COTL ORS	COASTAL ORISSA	
	GUJ	GUJARAT	
	GWB	GANGETIC WEST BENGAL	
	HARY	HARYANA	
	DLH	DELHI	
	HP	HIMACHAL PRADESH	
	J&K	JAMMU AND KASHMIR	
	JHRKND	JHARKHAND	
	KER	KERALA	
	KKN	KONKAN	
	LKSDP	LAKSHADWEEP	
	M MAHA	MADHYA MAHARASHTRA	
	MAHA	MAHARASHTRA	
	MANI	MANIPUR	
	MEGHA	MEGHALAYA	
	MIZO	MIZORAM	
	MP	MADHYA PRADESH	
		MRTHWD	MARATHWADA
		NAGA	NAGALAND
		N COTL AP	NORTH COASTAL ANDHRA PRADESH
		NIK	NORTH INTERIOR KARNATAKA
		ORS	ORISSA
		PJB	PUNJAB
RAJ		RAJASTHAN	
RYLSM		RAYALASEEMA	
	SAU & KUTCH	SAURASHTRA & KUTCH	

	SHWB	SUB-HIMALAYAN WEST BENGAL
	SIK	SOUTH INTERIOR KARNATAKA
	SKM	SIKKIM
	TLNGN	TELANGANA
	TN	TAMIL NADU
	TRP	TRIPURA
	UP	UTTAR PRADESH
	UTRKND	UTTARAKHAND
	VID	VIDHARBHA
	SHWB	SUB HIMALAYAN WEST BENGAL
	GWB	GANGETIC WEST BENGAL
	ARSEA	ARABIAN SEA
	ILS	ISLANDS
MISCELLANEOUS	ASSW	IN ASSOCIATION WITH
	ASSTD	ASSOCIATED
	LLC	LOW LEVEL CIRCULATION
	EMBDD	EMBEDDED
	N/HOOD	NEIGHBOURHOOD
	EXT	EXTREME