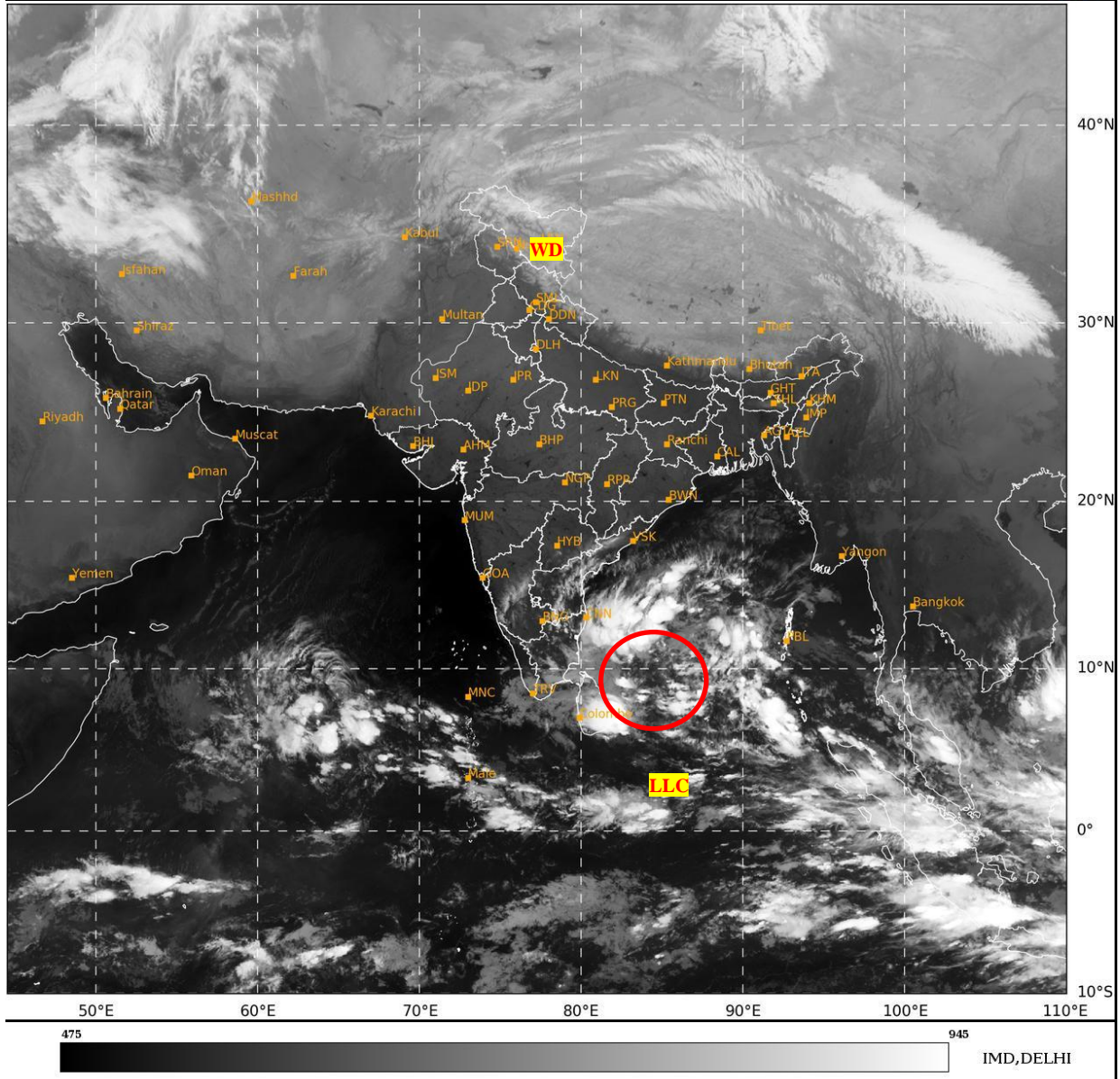




**SATELLITE BULLETIN BASED ON SATELLITE  
IMAGERIES AND PRODUCTS**  
**16.12.2024 TIME 1800 UTC**

SAT : INSAT-3DR IMG  
IMG\_TIR1 10.8 um  
LIC Mercator

16-12-2024/(1745 to 1812) GMT  
16-12-2024/(2315 to 2342) IST



TCIN50 DEMS 161800

SATELLITE BULLETIN BASED ON INSAT-3DR PIC OF 161745 UTC (.)

REGION COVERED BETWEEN LAT 50.0°N TO 35.0°S AND LONG 40.0°E TO 125.0°E (.)

**SALIENT FEATURES:-**

**LLC OVER CENTRAL PARTS OF SOUTH BAY:-**

LOW LEVEL CIRCULATION (LLC) OVER CENTRAL PARTS OF SOUTH BAY (.) ASSTD SCT TO BKN LOW/MED CLOUDS WITH EMBDD INTENSE TO VERY INTENSE CONVECTION OVER SOUTH ANDAMAN SEA ANDAMAN & NICOBAR ILS SOUTH ADJ CENTRAL BAY SRI LANKA & N/HOOD (MINIMUM CTT MINUS 70-80 DEG CEL) (.)

**WESTERN DISTURBANCE:-**

SCT MULTILAYERED CLOUDS OVER AFGAN EXT N PAK J&K N HP LADAKH AND N/HOOD IN ASSW **WD** OVER THE AREA (.)



INSAT-3DR 16-DEC-2024 17:45 WV IMG

WATER VAPOUR WIND

(1Kt = 0.5 m/s)

10 Kt

15 Kt

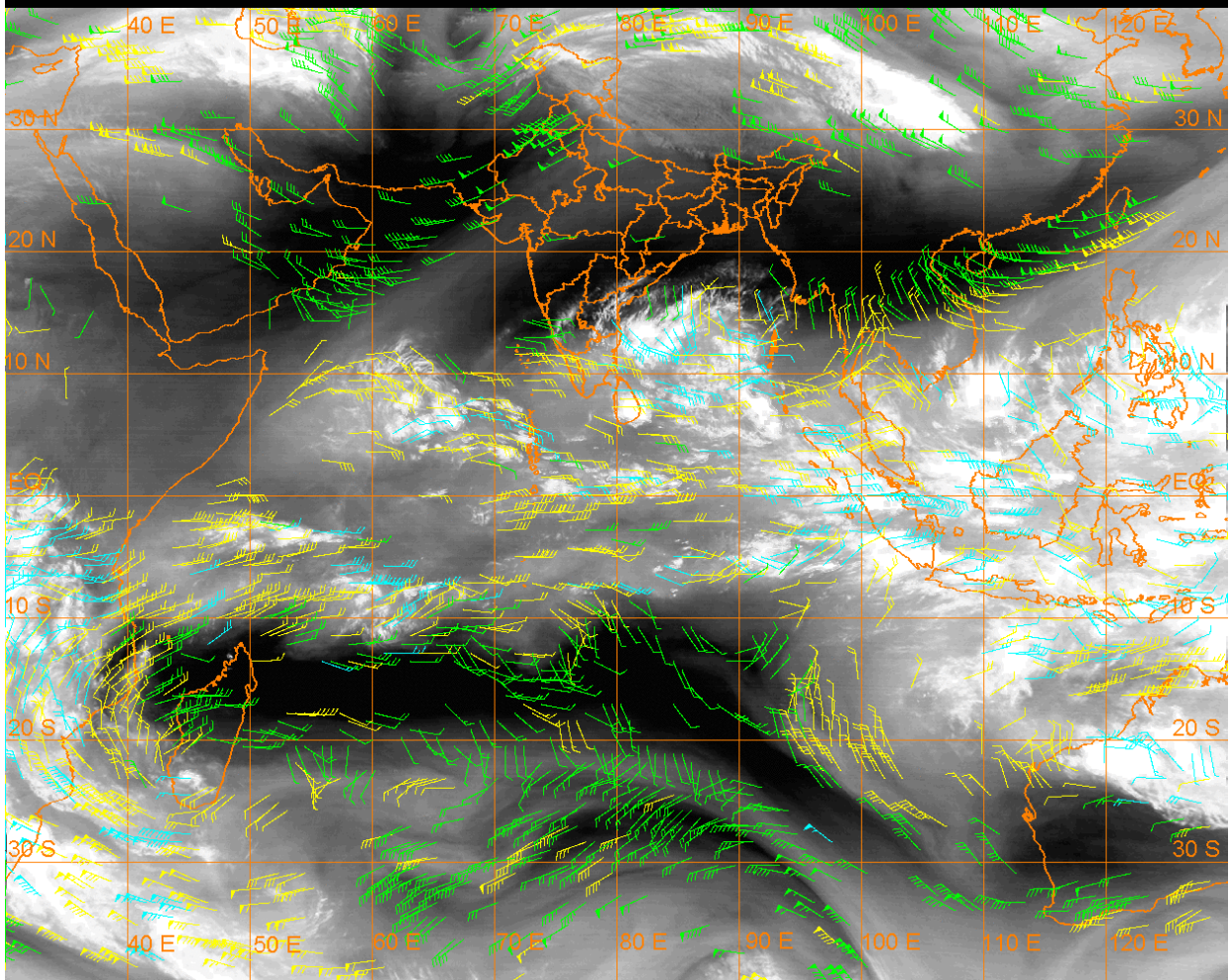
20 Kt

50 Kt

100-250 hPa

251-350 hPa

351-500 hPa



### **CLOUDS DESCRIPTION WITHIN INDIA:-**

#### **NORTH:-**

SCT LOW/MED CLOUDS WITH EMBDD MOD TO INT CONVTN OVER LADAKH AND ISOL WK TO MOD CONVTN OVER J&K N HP N UTRKND (.)

#### **EAST:-**

ISOL LOW/MED CLOUDS OVER SHWB SKM NE STATES (.)

#### **WEST:-**

NO SIGNIFICANT CLOUDS OVER THE REGION (.)

#### **SOUTH:-**

SCT LOW/MED CLOUDS WITH EMBDD INT TO V INT CONVTN OVER NICOBAR ILS AREA (MINIMUM **CTT MINUS 70-80 DEG CEL**) (.) SCT LOW/MED CLOUDS WITH EMBDD ISOL WK TO MOD CONVTN OVER ANDAMAN ILS SIK S RYLSM COTL AP N TN (.) SCT LOW/MED CLOUDS OVER REST TN REST KRNTK N RYLSM TLNGN KER LKSDP ILS AREA (.)

#### **ARABIAN SEA:-**

SCT LOW/MED CLOUDS WITH EMBDD INT TO V INT CONVTN OVER SOUTH ARSEA MALDIVES ILS AREA (MINIMUM **CTT MINUS 75-85 DEG CEL**) (.) SCT LOW/MED CLOUDS WITH EMBDD ISOL WK TO MOD CONVTN OVER & COMORIN AREA (.)

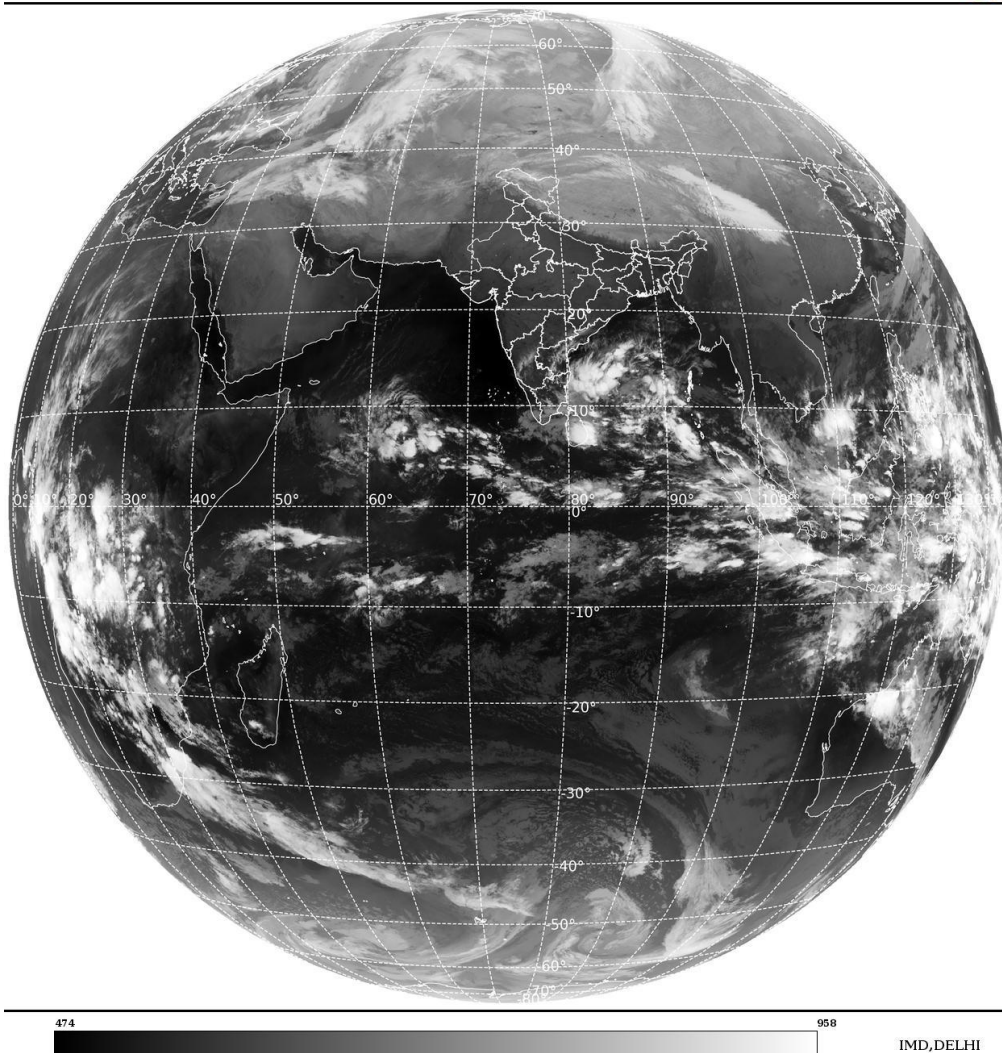
#### **BAY OF BENGAL & ANDAMAN SEA:-**

SCT TO BKN LOW/MED CLOUDS WITH EMBDD INT TO V INT CONVTN OVER SOUTH ADJ CENTRAL BAY AND SOUTH ANDAMAN SEA (MINIMUM **CTT MINUS 70-80 DEG CEL**) (.) SCT LOW/MED CLOUDS WITH EMBDD MOD TO INT CONVTN OVER NORTH ANDAMAN SEA & TENASSERIM COAST (.)

**CLOUDS DESCRIPTION OUTSIDE INDIA:-**

SAT : INSAT-3DR IMG  
Thermal Infrared1 Count 10.8 um  
L1B FULL DISK

16-12-2024/(1745 to 1812) GMT  
16-12-2024/(2315 to 2342) IST



**SCT LOW/MED CLOUDS WITH EMBDD MOD TO INT CONVTN OVER SRI LANKA PALK STR GULF OF MANNAR MALDIVES TIBET CHINA EAST CHINA SEA TAIWAN THAILAND GULF OF THAILAND CAMBODIA VIETNAM SUMATRA STR OF MALACCA MALAYSIA BORNEO SOUTH CHINA SEA JAVA ILS & SEA CELEBES ILS & SEA PHILIPPINES SULU SEA WEST MADAGASCAR MOZAMBIQUE CHANNEL AND OVER INDIAN OCEAN BET LAT 5.0N TO 15.0S LONG 40.0E TO 120.0E (.)**

**TOO 17/0030 EF=**

**NNNN**

**LEGEND:-**

<b>REGION</b>	<b>NORTH</b>	<b>J&amp;K HP PJB HARY DLH UP UTRKND</b>
	<b>EAST</b>	<b>BHR JHRKND CHTGH ORS WB SKM NORTH- EAST STATES</b>
	<b>WEST</b>	<b>RAJ MP GUJ MAHA GOA</b>
	<b>SOUTH</b>	<b>TLNGN AP KRNTK KER TN LKSDP ANDAMAN &amp; NICOBAR ILS</b>
<b>CLOUD DISTRIBUTION</b>	<b>ISOL</b>	<b>ISOLATED (LESS THAN 25%)</b>
	<b>SCT</b>	<b>SCATTERED (25 TO 50%)</b>
	<b>BKN</b>	<b>BROKEN (51 TO 75%)</b>
	<b>SLD</b>	<b>SOLID (GREATER THAN 75%)</b>

<b>CLOUDS TOP TEMPERATURE</b>	<b>CTT</b>	<b>CLOUD TOP TEMPERATURE</b>	
<b>CONVECTION</b>	<b>WK CONV TN</b>	<b>WEAK CONVECTION (CTT GREATER THAN -25°C)</b>	
	<b>MOD CONV TN</b>	<b>MODERATE CONVECTION (CTT BETWEEN -25°C TO -40°C)</b>	
	<b>INT CONV TN</b>	<b>INTENSE CONVECTION (CTT BETWEEN -41°C TO -70°C)</b>	
	<b>V INT CONV TN</b>	<b>VERY INTENSE CONVECTION (CTT LESS THAN -70°C)</b>	
<b>METEOROLOGICAL SUB- DIVISIONS, STATES &amp; UNION TERRITORIES</b>	<b>ARUPR</b>	<b>ARUNACHAL PRADESH</b>	
	<b>BHR</b>	<b>BIHAR</b>	
	<b>CHTGH</b>	<b>CHHATTISGARH</b>	
	<b>COTL AP</b>	<b>COASTAL ANDHRA PRADESH</b>	
	<b>COTL KRNTK</b>	<b>COASTAL KARNATAKA</b>	
	<b>COTL ORS</b>	<b>COASTAL ORISSA</b>	
	<b>GUJ</b>	<b>GUJARAT</b>	
	<b>GWB</b>	<b>GANGETIC WEST BENGAL</b>	
	<b>HARY</b>	<b>HARYANA</b>	
	<b>DLH</b>	<b>DELHI</b>	
	<b>HP</b>	<b>HIMACHAL PRADESH</b>	
	<b>J&amp;K</b>	<b>JAMMU AND KASHMIR</b>	
	<b>JHRKND</b>	<b>JHARKHAND</b>	
	<b>KER</b>	<b>KERALA</b>	
	<b>KKN</b>	<b>KONKAN</b>	
	<b>LKSDP</b>	<b>LAKSHADWEEP</b>	
	<b>M MAHA</b>	<b>MADHYA MAHARASHTRA</b>	
	<b>MAHA</b>	<b>MAHARASHTRA</b>	
	<b>MANI</b>	<b>MANIPUR</b>	
	<b>MEGHA</b>	<b>MEGHALAYA</b>	
	<b>MIZO</b>	<b>MIZORAM</b>	
	<b>MP</b>	<b>MADHYA PRADESH</b>	
		<b>MRTHWD</b>	<b>MARATHWADA</b>
		<b>NAGA</b>	<b>NAGALAND</b>
		<b>N COTL AP</b>	<b>NORTH COASTAL ANDHRA PRADESH</b>
		<b>NIK</b>	<b>NORTH INTERIOR KARNATAKA</b>
<b>ORS</b>		<b>ORISSA</b>	
<b>PJB</b>		<b>PUNJAB</b>	
<b>RAJ</b>		<b>RAJASTHAN</b>	
<b>RYLSM</b>		<b>RAYALASEEMA</b>	
<b>SAU &amp; KUTCH</b>		<b>SAURASHTRA &amp; KUTCH</b>	
<b>SHWB</b>		<b>SUB-HIMALAYAN WEST BENGAL</b>	
<b>SIK</b>		<b>SOUTH INTERIOR KARNATAKA</b>	
<b>SKM</b>		<b>SIKKIM</b>	
<b>TLNGN</b>		<b>TELANGANA</b>	
<b>TN</b>		<b>TAMIL NADU</b>	
<b>TRP</b>		<b>TRIPURA</b>	
<b>UP</b>		<b>UTTAR PRADESH</b>	

	<b>UTRKND</b>	<b>UTTARAKHAND</b>
	<b>VID</b>	<b>VIDHARBHA</b>
	<b>SHWB</b>	<b>SUB HIMALAYAN WEST BENGAL</b>
	<b>GWB</b>	<b>GANGETIC WEST BENGAL</b>
	<b>ARSEA</b>	<b>ARABIAN SEA</b>
	<b>ILS</b>	<b>ISLANDS</b>
<b>MISCELLANEOUS</b>	<b>ASSW</b>	<b>IN ASSOCIATION WITH</b>
	<b>ASSTD</b>	<b>ASSOCIATED</b>
	<b>LLC</b>	<b>LOW LEVEL CIRCULATION</b>
	<b>EMBDD</b>	<b>EMBEDDED</b>
	<b>N/HOOD</b>	<b>NEIGHBOURHOOD</b>
	<b>EXT</b>	<b>EXTREME</b>