



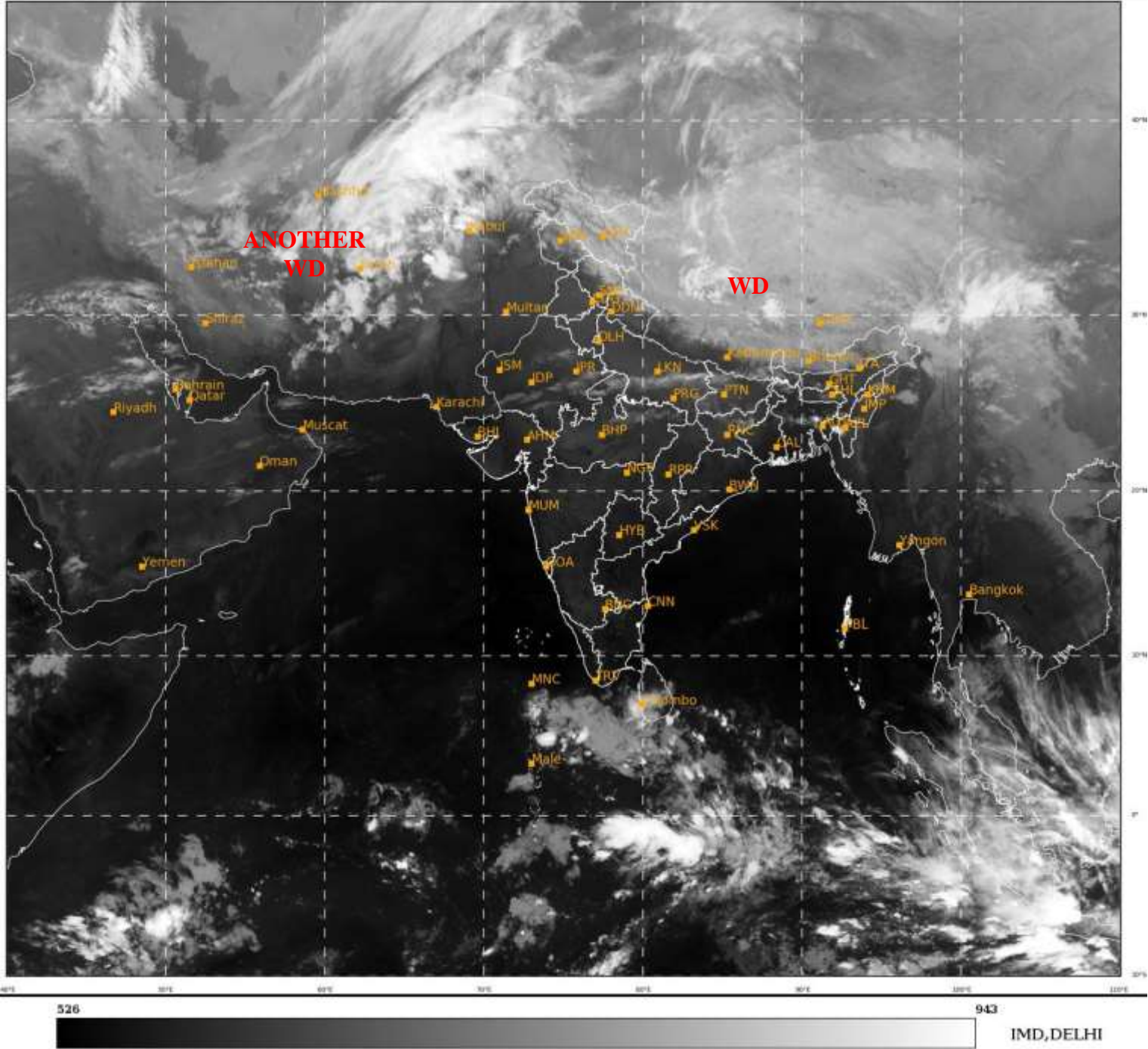
भारत मौसम विज्ञान विभाग
पृथ्वी विज्ञान मंत्रालय
India Meteorological Department
Ministry of Earth Sciences



**SATELLITE BULLETIN BASED ON SATELLITE
IMAGERIES AND PRODUCTS**
24.02.2023 TIME 1800 UTC

SAT : INSAT-3D IMG
IMG_TIR1 10.8 um
LIC Mercator

24-02-2023/(1700 to 1726) GMT
24-02-2023/(2230 to 2256) IST



TCIN50 DEMS 241800

SATELLITE BULLETIN BASED ON INSAT-3D PIC OF 241700 UTC (.)

REGION COVERED BETWEEN LAT 50.0°N TO 35.0°S AND LONG 40.0°E TO 125.0°E (.)

SALIENT FEATURES:-

WESTERN DISTURBANCE (WD):-

SCT MULTILAYERED CLOUDS OVER TIBET ADJ CHINA IN ASSW **WD** OVER THE AREA (.)

SCT MULTILAYERED CLOUDS OVER IRAN AFGAN AND N/HOOD IN ASSW **ANOTHER WD** OVER THE AREA (.)



INSAT-3D 24-FEB-2023 17:00 WV IMG

WATER VAPOUR WIND

(1Kt = 0.5 m/s)

10 Kt

15 Kt

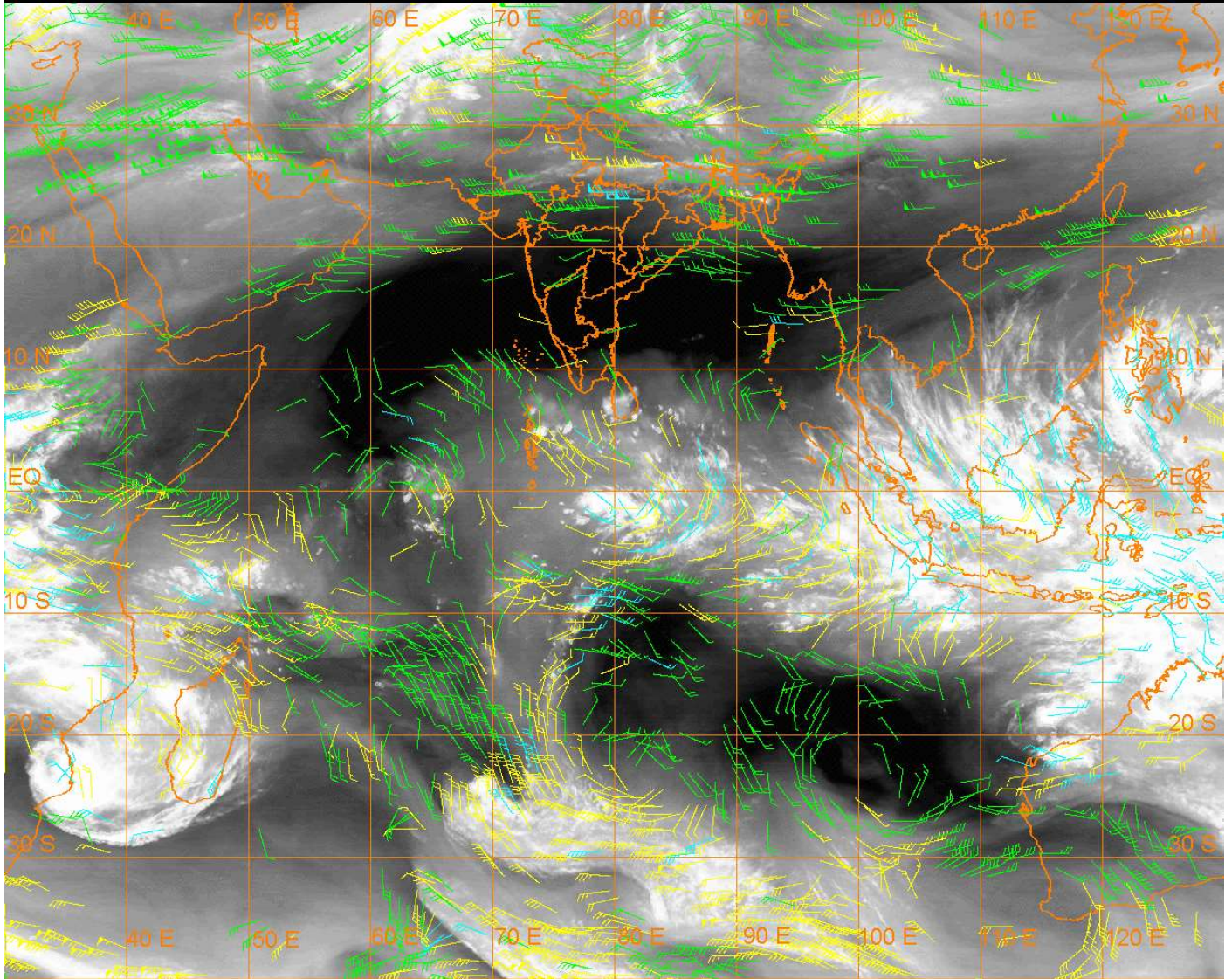
20 Kt

50 Kt

100-250 hPa

251-350 hPa

351-500 hPa



CLOUDS DESCRIPTION WITHIN INDIA:-

NORTH:-

SCT LOW/MED CLOUDS WITH EMBDD ISOL WK TO MOD CONVTN OVER LADAKH N J&K N HP N UTRKND SW & E UP (.) ISOL TO SCT LOW/MED CLOUDS OVER S J&K HP S UTRKND NW UP (.)

EAST:-

SCT LOW/MED CLOUDS WITH EMBDD MOD TO INT CONVTN OVER TRP (.) SCT LOW/MED CLOUDS WITH EMBDD WK TO MOD CONVTN OVER W BHR NE JHRKND N SHWB SKM ARUPR N ASSAM (.) ISOL TO SCT LOW/MED CLOUDS OVER N JHRKND N CHTGH N GWB S SHWB REST NE STATES (.)

WEST:-

SCT LOW/MED CLOUDS WITH EMBDD WK TO MOD CONVTN OVER E ADJ W RAJ N MP (.)

SOUTH:-

ISOL TO SCT LOW/MED CLOUDS OVER KER TN & NICOBAR ILS (.)

ARABIAN SEA:-

SCT LOW/MED CLOUDS WITH EMBDD MOD TO INT CONVTN OVER COMORIN AREA AND ISOL WK CONVTN OVER SE ARSEA (.)

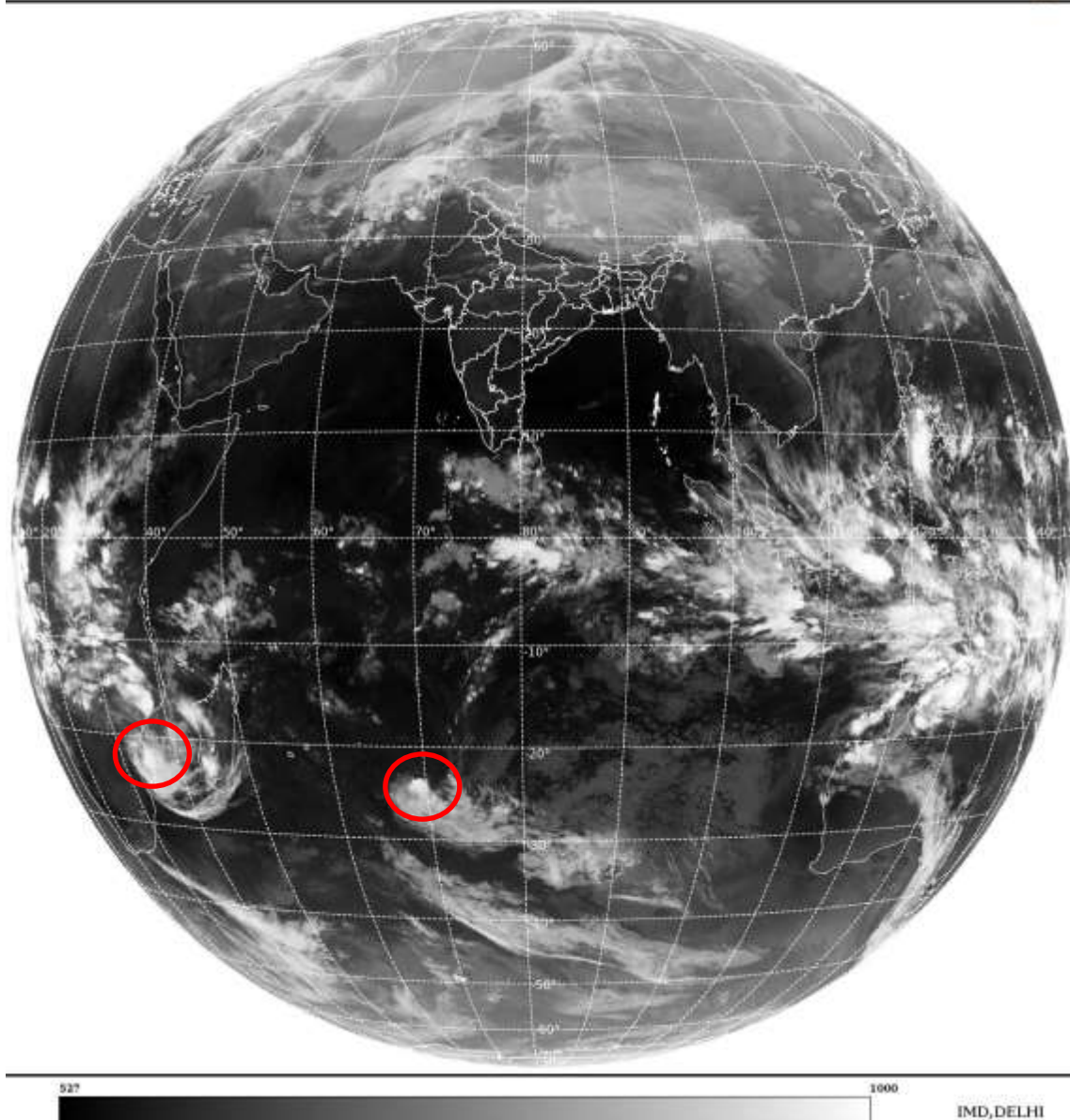
BAY OF BENGAL & ANDAMAN SEA:-

SCT LOW/MED CLOUDS WITH EMBDD ISOL MOD TO INT CONVTN OVER SW BAY AND WK CONVTN OVER SE BAY S ANDAMAN SEA (.)

CLOUDS DESCRIPTION OUTSIDE INDIA:-

SAT : INSAT-3D IMG
Thermal Infrared1 Count 10.8 um
LIB FULL DISK

24-02-2023/(1700 to 1726) GMT
24-02-2023/(2230 to 2256) IST



VORTEX (FREDDY) OVER SOUTH MOZAMBIQUE AND N/HOOD:-

VORTEX (**FREDDY**) OVER SOUTH MOZAMBIQUE & N/HOOD CENTERED NEAR **22.7S / 34.7E** (.) **OVERLAND** (.) ASSTD BKN LOW/MED CLOUDS WITH EMBDD INT TO V INT CONVTN OVER MOZAMBIQUE ADJ MOZAMBIQUE CHANNEL BET LAT 20.0S TO 26.0S AND LONG 32.0E TO 40.0E (.)

VORTEX (ENALA) OVER SOUTH INDIAN OCEAN:-

ANOTHER VORTEX (**ENALA**) OVER SOUTH INDIAN OCEAN (**AREA D60 ADJ E90**) CENTERED NEAR **23.0S / 69.7E** (.) INTENSITY **T3.0/4.0** (.) CORRESPONDING MAXIMUM SUSTAINED WINDS OF **48-63 KNOTS** (.) ASSTD BKN LOW/MED CLOUDS WITH EMBDD INT TO V INT CONVTN OVER AREA BET LAT 22.0S TO 30.0S AND LONG 66.0E TO 78.0E (.)

SCT LOW/MED CLOUDS WITH EMBDD MOD TO INT CONVTN OVER S SRI LANKA NEPAL BHUTAN TIBET CHINA E CHINA SEA EXT N MYANMAR GULF OF THAILAND SUMATRA STR OF MALACCA MALAYSIA BORNEO SOUTH CHINA SEA JAVA ILS & SEA CELEBES ILS & SEA PHILIPPINES SULU SEA MADAGASCAR MOZAMBIQUE CHANNEL AND OVER INDIAN OCEAN BET LAT 5.0N TO 30.0S LONG 45.0E TO 80.0E AND BET LAT 5.0N TO 13.0S LONG 80.0E TO 125.0E (.)

TOO 24/2340 HRS IST=

NNNN

LEGEND:-

REGION	NORTH	J&K HP PJB HARY DLH UP UTRKND
	EAST	BHR JHRKND CHTGH OR WB SKM NORTH- EAST STATES
	WEST	RAJ MP GUJ MAHA GOA
	SOUTH	TLNGN AP KRNTK KER TN LKSDP ANDAMAN & NICOBAR ILS

CLOUD DISTRIBUTION	ISOL	ISOLATED (LESS THAN 25%)	
	SCT	SCATTERED (25 TO 50%)	
	BKN	BROKEN (51 TO 75%)	
	SLD	SOLID (GREATER THAN 75%)	
CLOUDS TOP TEMPERATURE	CTT	CLOUD TOP TEMPERATURE	
CONVECTION	WK CONVTN	WEAK CONVECTION (CTT GREATER THAN -25°C)	
	MOD CONVTN	MODERATE CONVECTION (CTT BETWEEN -25°C TO -40°C)	
	INT CONVTN	INTENSE CONVECTION (CTT BETWEEN -41°C TO -70°C)	
	V INT CONVTN	VERY INTENSE CONVECTION (CTT LESS THAN -70°C)	
METEOROLOGICAL SUB- DIVISIONS, STATES & UNION TERRITORIES	ARUPR	ARUNACHAL PRADESH	
	BHR	BIHAR	
	CHTGH	CHHATTISGARH	
	COTL AP	COASTAL ANDHRA PRADESH	
	COTL KRNTK	COASTAL KARNATAKA	
	COTL ORS	COASTAL ORISSA	
	GUJ	GUJARAT	
	GWB	GANGETIC WEST BENGAL	
	HARY	HARYANA	
	DLH	DELHI	
	HP	HIMACHAL PRADESH	
	J&K	JAMMU AND KASHMIR	
	JHRKND	JHARKHAND	
	KER	KERALA	
	KKN	KONKAN	
	LKSDP	LAKSHADWEEP	
	M MAHA	MADHYA MAHARASHTRA	
	MAHA	MAHARASHTRA	
	MANI	MANIPUR	
	MEGHA	MEGHALAYA	
	MIZO	MIZORAM	
	MP	MADHYA PRADESH	
		MRTHWD	MARATHWADA
		NAGA	NAGALAND
N COTL AP		NORTH COASTAL ANDHRA	

	PRADESH
NIK	NORTH INTERIOR KARNATAKA
ORS	ORISSA
PJB	PUNJAB
RAJ	RAJASTHAN
RYLSM	RAYALASEEMA
SAU & KUTCH	SAURASHTRA & KUTCH
SHWB	SUB-HIMALAYAN WEST BENGAL
SIK	SOUTH INTERIOR KARNATAKA
SKM	SIKKIM
TLNGN	TELANGANA
TN	TAMIL NADU
TRP	TRIPURA
UP	UTTAR PRADESH
UTRKND	UTTARAKHAND
VID	VIDHARBHA
SHWB	SUB HIMALAYAN WEST BENGAL
GWB	GANGETIC WEST BENGAL
ARSEA	ARABIAN SEA
	ILS
	ISLANDS
MISCELLANEOUS	ASSW
	IN ASSOCIATION WITH
	ASSTD
	ASSOCIATED
	LLC
	LOW LEVEL CIRCULATION
	EMBDD
	EMBEDDED
	N/HOOD
	NEIGHBOURHOOD
	EXT
	EXTREME