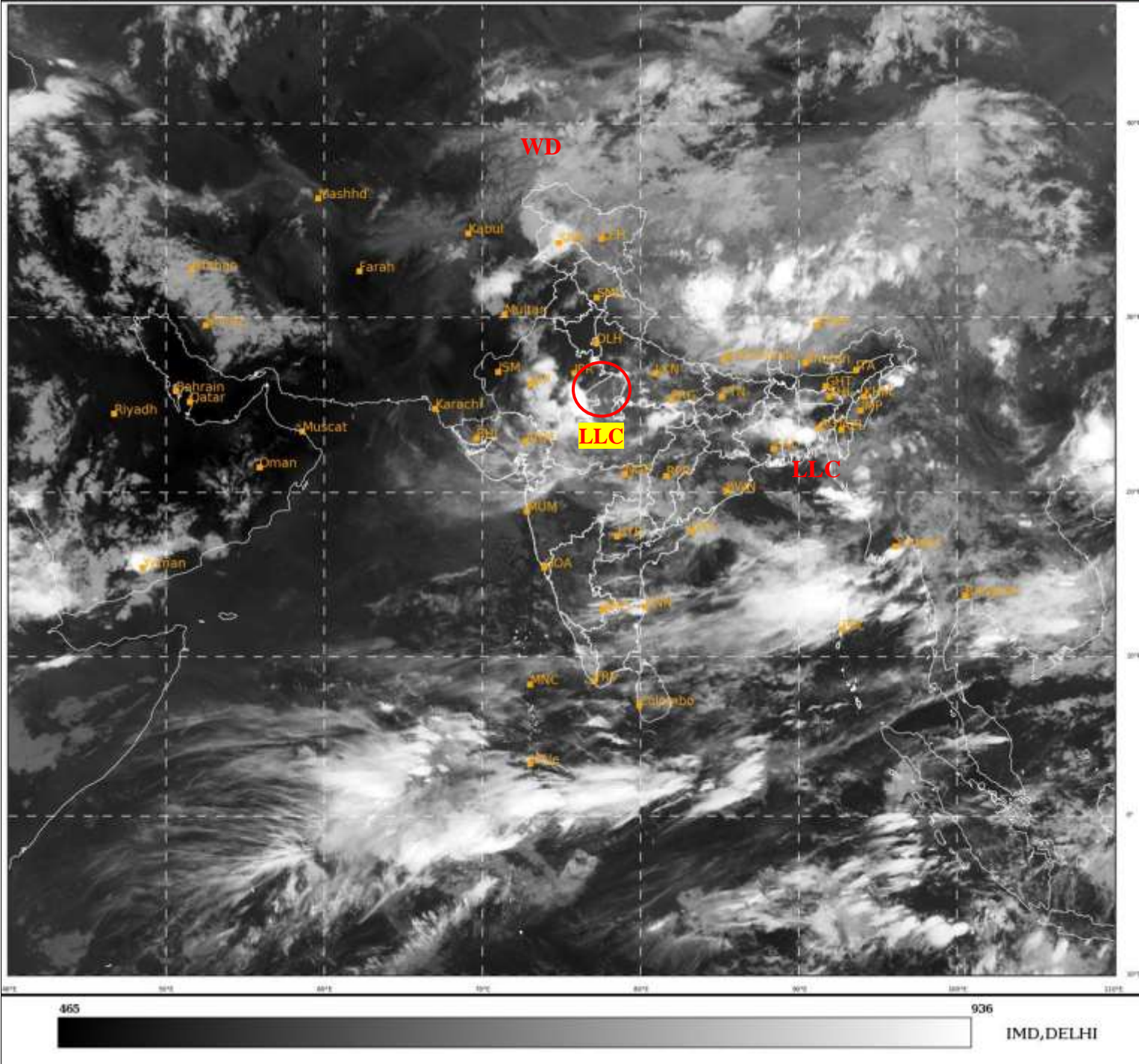




**SATELLITE BULLETIN BASED ON SATELLITE**  
**IMAGERIES AND PRODUCTS**  
**05.08.2021 TIME 1800 UTC**

SAT : INSAT-3D IMG  
IMG\_TIR1 10.8 um  
LIC Mercator

05-08-2021/(1700 to 1726) GMT  
05-08-2021/(2230 to 2256) IST



TCIN50 DEMS 051800

SATELLITE BULLETIN BASED ON INSAT-3D PIC OF 051700 UTC (.)

REGION COVERED BETWEEN LAT 50.0°N TO 30.0°S AND LONG 40.0°E TO 125.0°E (.)

**SALIENT FEATURES:-**

**LLC OVER CENTRAL PARTS OF N MP ADJ SW UP AND N/HOOD:-**

LLC OVER CENTRAL PARTS OF N MP ADJ SW UP & N/HOOD (.) ASSTD SCT LOW/MED CLOUDS WITH EMBDD INT TO V INT CONVTN OVER NW MP ADJ EC RAJ (MINIMUM CTT 85 DEG C) AND ISOL MOD TO INT CONVTN OVER EXTREME SW UP (.)

**WESTERN DISTURBANCE (WD):-**

SCT MULTILAYERED CLOUDS OVER N PAK J&K HP LADAKH & N/HOOD IN ASSW WD OVER THE

AREA (.)



INSAT-3D 05-AUG-2021 17:00 WV IMG

WATER VAPOUR WIND

(1Kt = 0.5 m/s)

10 Kt

15 Kt

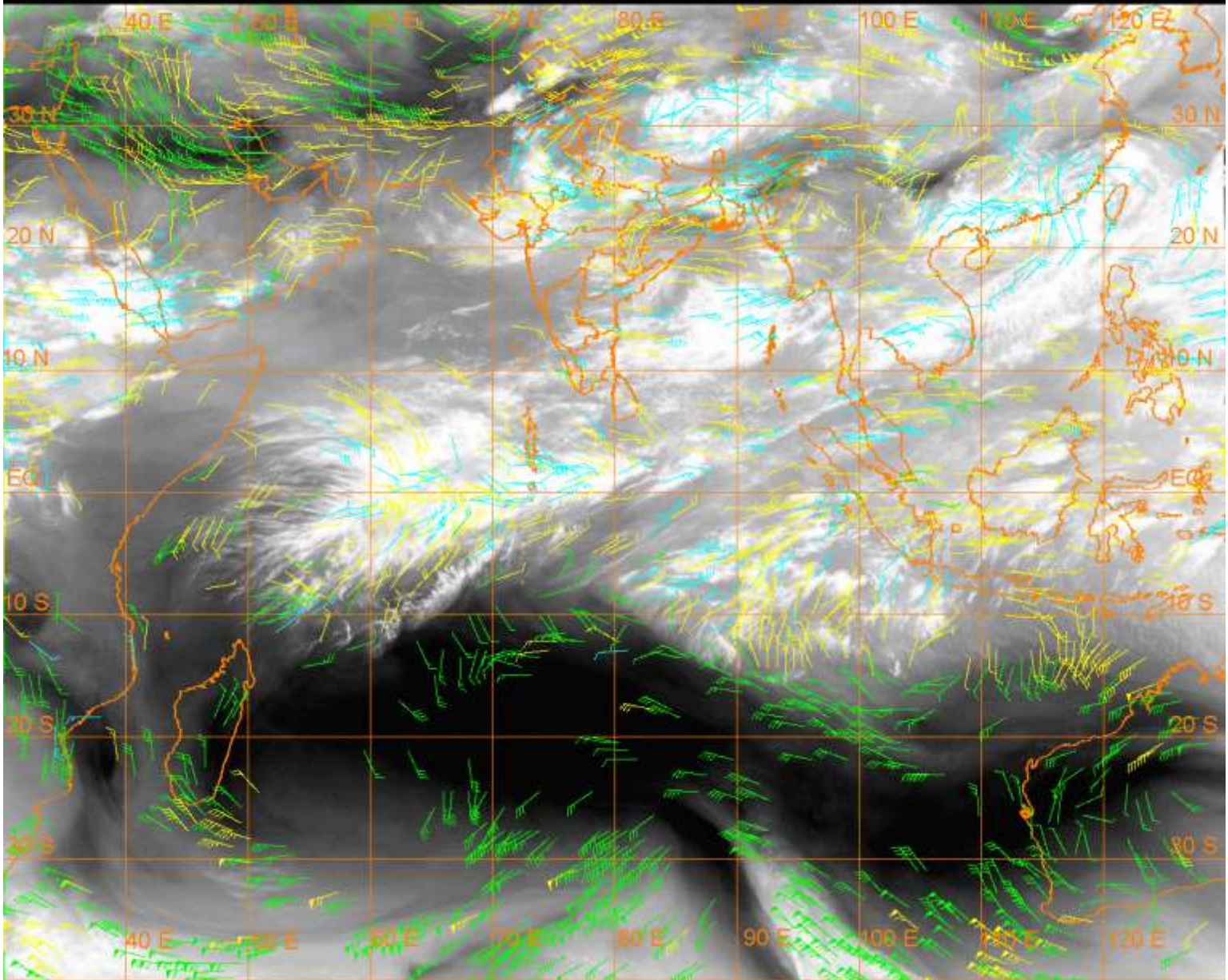
20 Kt

50 Kt

100-250 hPa

251-350 hPa

351-500 hPa



**CLOUDS DESCRIPTION WITHIN INDIA:-**

**NORTH:-**

SCT LOW/MED CLOUDS WITH EMBDD MOD TO INT CONVTN OVER NW J&K EC UP AND WK TO MOD CONVTN OVER LADAKH S& NW UP HP UTRKND C HARY (.) SCT LOW/MED CLOUDS OVER SC PJB S HARY DLH REST UP (.)

**EAST:-**

SCT LOW/MED CLOUDS WITH EMBDD MOD TO INT CONVTN OVER SW BHR SE & NW JHRKND GWB SW & N CHTGH C JHRKND EXT N ORS C ASSAM MEGHA TRP S MIZO AND ISOL WK TO MOD CONVTN OVER REST CHTGH REST ORS SHWB SKM REST NE STATES (.)

**WEST:-**

SCT LOW/MED CLOUDS WITH EMBDD INT TO V INT CONVTN OVER NW & SE RAJ NW& NE MP (MINIMUM CTT 93 DEG C) (.) SCT LOW/MED CLOUDS WITH EMBDD MOD TO INT CONVTN OVER SW & C MP E SE GUJ EXTREME NORTH MADHYA MAHA VID AND ISOL WK TO MOD CONVTN OVER SW MP REST MAHA REST GUJ (.) SCT LOW/MED CLOUDS OVER SW RAJ & GOA REST MP (.)

**SOUTH:-**

SCT LOW/MED CLOUDS WITH EMBDD MOD TO INT CONVTN OVER N COTL AP TLNGN NIK KER NW TN ANDAMAN ILS (.) SCT LOW/MED CLOUDS WITH EMBDD ISOL WK TO MOD CONVTN OVER REST KRNTK RYLSM REST TN LKSDP & NICOBAR ILS (.) SCT LOW/MED CLOUDS OVER S COTL AP (.)

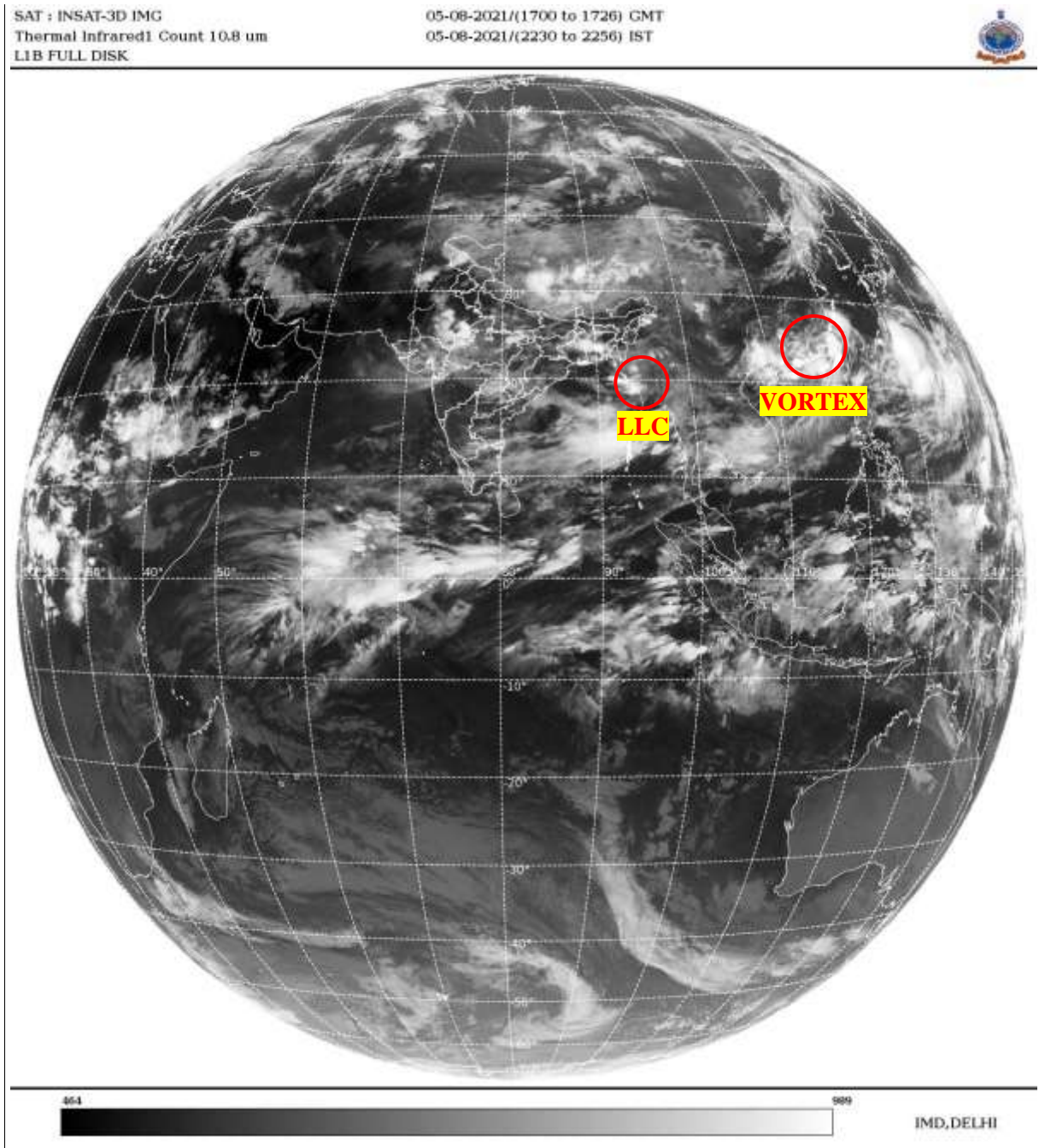
**ARABIAN SEA:-**

SCT LOW/MED CLOUDS WITH EMBDD MOD TO INT CONVTN OVER S ARSEA SOUTH OF LAT 8.0N & ADJ EQUATORIAL INDIAN OCEAN (.)

**BAY OF BENGAL & ANDAMAN SEA:-**

BKN LOW/MED CLOUDS WITH EMBDD INT TO V INT CONVTN OVER EC BAY (.) SCT LOW/MED CLOUDS WITH EMBDD MOD TO INT CONVTN OVER REST BAY NORTH OF LAT 10.0N ARAKAN COAST GULF OF MARTABAN N ANDAMAN SEA (.)

**CLOUDS DESCRIPTION OUTSIDE INDIA:-**



**VORTEX (LUPIT) OVER SOUTH CHINA SEA ADJ SE CHINA:-**

VORTEX (**LUPIT**) OVER SOUTH CHINA SEA ADJ SE CHINA & N/HOOD CENTERED NEAR **24.0N/117.2E** (.) **OVERLAND** (.) ASSTD BKN LOW/MED CLOUDS WITH EMBDD INT TO V INT CONVTN OVER AREA BET LAT 20.0N TO 26.0N LONG 112.0E TO 120.0E (.)

**LLC OVER ARAKAN COAST ADJ S MYANMAR:-**

BKN LOW/MED CLOUDS WITH EMBDD MOD TO INT CONVTN OVER ARAKAN COAST ADJ S MYANMAR & N/HOOD IN ASSW LOW LEVEL CIRCULATION (**LLC**) OVER THE AREA (.)

SCT LOW/MED CLOUDS WITH EMBDD MOD TO INT CONVTN OVER MALDIVES N PAK NEPAL TIBET CHINA MYANMAR THAILAND GULF OF THAILAND CAMBODIA LAOS VIETNAM SUMATRA STR OF MALACCA MALAY PENINSULA BORNEO S CHINA SEA JAVA ILS & SEA CELEBES ILS & SEA PHILIPPINES HAINAN TAIWAN E CHINA SEA N YELLOW SEA AND OVER INDIAN OCEAN BET LAT 5.0N TO 10.0S LONG 55.0E TO 110.0E (.)

NNNN

**LEGEND:-**

|        |       |  |
|--------|-------|--|
| REGION | NORTH | J&K HP PJB HARY DLH UP UTRKND                        |
|        | EAST  | BHR JHRKND CHTGH ORS WB<br>SKMNORTH- EAST STATES     |
|        | WEST  | RAJ MP GUJ MAHA GOA                                  |
|        | SOUTH | TLNGN AP KRNTK KER TN LKSDP<br>ANDAMAN & NICOBAR ILS |

|  |              |   |
|--|--------------|---|
| CLOUD DISTRIBUTION                                       | ISOL         | ISOLATED (LESS THAN 25%)                            |
|  | SCT          | SCATTERED (25 TO 50%)                               |
|  | BKN          | BROKEN (51 TO 75%)                                  |
|  | SLD          | SOLID (GREATER THAN 75%)                            |
| CLOUDS TOP TEMPERATURE                                   | CTT          | CLOUD TOP TEMPERATURE                               |
| CONVECTION   | WK CONVTN    | WEAK CONVECTION<br>(CTT GREATER THAN -25°C)         |
|  | MOD CONVTN   | MODERATE CONVECTION<br>(CTT BETWEEN -25°C TO -40°C) |
|  | INT CONVTN   | INTENSE CONVECTION<br>(CTT BETWEEN -41°C TO -70°C)  |
|  | V INT CONVTN | VERY INTENSE CONVECTION<br>(CTT LESS THAN -70°C)    |
| METEOROLOGICAL SUB-DIVISIONS, STATES & UNION TERRITORIES | ARUPR        | ARUNACHAL PRADESH                                   |
|  | BHR          | BIHAR   |
|  | CHTGH        | CHHATTISGARH  |
|  | COTL AP      | COASTAL ANDHRA PRADESH                              |
|  | COTL KRNTK   | COASTAL KARNATAKA                                   |
|  | COTL ORS     | COASTAL ORISSA                                      |
|  | GUJ          | GUJARAT   |
|  | GWB          | GANGETIC WEST BENGAL                                |
|  | HARY         | HARYANA   |
|  | DLH          | DELHI   |
|  | HP           | HIMACHAL PRADESH                                    |
|  | J&K          | JAMMU AND KASHMIR                                   |
|  | JHRKND       | JHARKHAND   |
|  | KER          | KERALA  |
|  | KKN          | KONKAN  |
|  | LKSDP        | LAKSHADWEEP   |
|  | M MAHA       | MADHYA MAHARASHTRA                                  |
|  | MAHA         | MAHARASHTRA   |
|  | MANI         | MANIPUR   |
|  | MEGHA        | MEGHALAYA   |
| MIZO   | MIZORAM      |   |

|                      |                        |                                     |
|----------------------|------------------------|-------------------------------------|
|                      | <b>MP</b>              | <b>MADHYA PRADESH</b>               |
|                      | <b>MRTHWD</b>          | <b>MARATHWADA</b>                   |
|                      | <b>NAGA</b>            | <b>NAGALAND</b>                     |
|                      | <b>N COTL AP</b>       | <b>NORTH COASTAL ANDHRA PRADESH</b> |
|                      | <b>NIK</b>             | <b>NORTH INTERIOR KARNATAKA</b>     |
|                      | <b>ORS</b>             | <b>ORISSA</b>                       |
|                      | <b>PJB</b>             | <b>PUNJAB</b>                       |
|                      | <b>RAJ</b>             | <b>RAJASTHAN</b>                    |
|                      | <b>RYLSM</b>           | <b>RAYALASEEMA</b>                  |
|                      | <b>SAU &amp; KUTCH</b> | <b>SAURASHTRA &amp; KUTCH</b>       |
|                      | <b>SHWB</b>            | <b>SUB-HIMALAYAN WEST BENGAL</b>    |
|                      | <b>SIK</b>             | <b>SOUTH INTERIOR KARNATAKA</b>     |
|                      | <b>SKM</b>             | <b>SIKKIM</b>                       |
|                      | <b>TLNGN</b>           | <b>TELANGANA</b>                    |
|                      | <b>TN</b>              | <b>TAMIL NADU</b>                   |
|                      | <b>TRP</b>             | <b>TRIPURA</b>                      |
|                      | <b>UP</b>              | <b>UTTAR PRADESH</b>                |
|                      | <b>UTRKN</b>           | <b>UTTARAKHAND</b>                  |
|                      | <b>VID</b>             | <b>VIDHARBHA</b>                    |
|                      | <b>SHWB</b>            | <b>SUB HIMALAYAN WEST BENGAL</b>    |
|                      | <b>GWB</b>             | <b>GANGETIC WEST BENGAL</b>         |
|                      | <b>ARSEA</b>           | <b>ARABIAN SEA</b>                  |
|                      | <b>ILS</b>             | <b>ISLANDS</b>                      |
| <b>MISCELLANEOUS</b> | <b>ASSW</b>            | <b>IN ASSOCIATION WITH</b>          |
|                      | <b>ASSTD</b>           | <b>ASSOCIATED</b>                   |
|                      | <b>LLC</b>             | <b>LOW LEVEL CIRCULATION</b>        |
|                      | <b>EMBDD</b>           | <b>EMBEDDED</b>                     |
|                      | <b>N/HOOD</b>          | <b>NEIGHBOURHOOD</b>                |
|                      | <b>EXT</b>             | <b>EXTREME</b>                      |