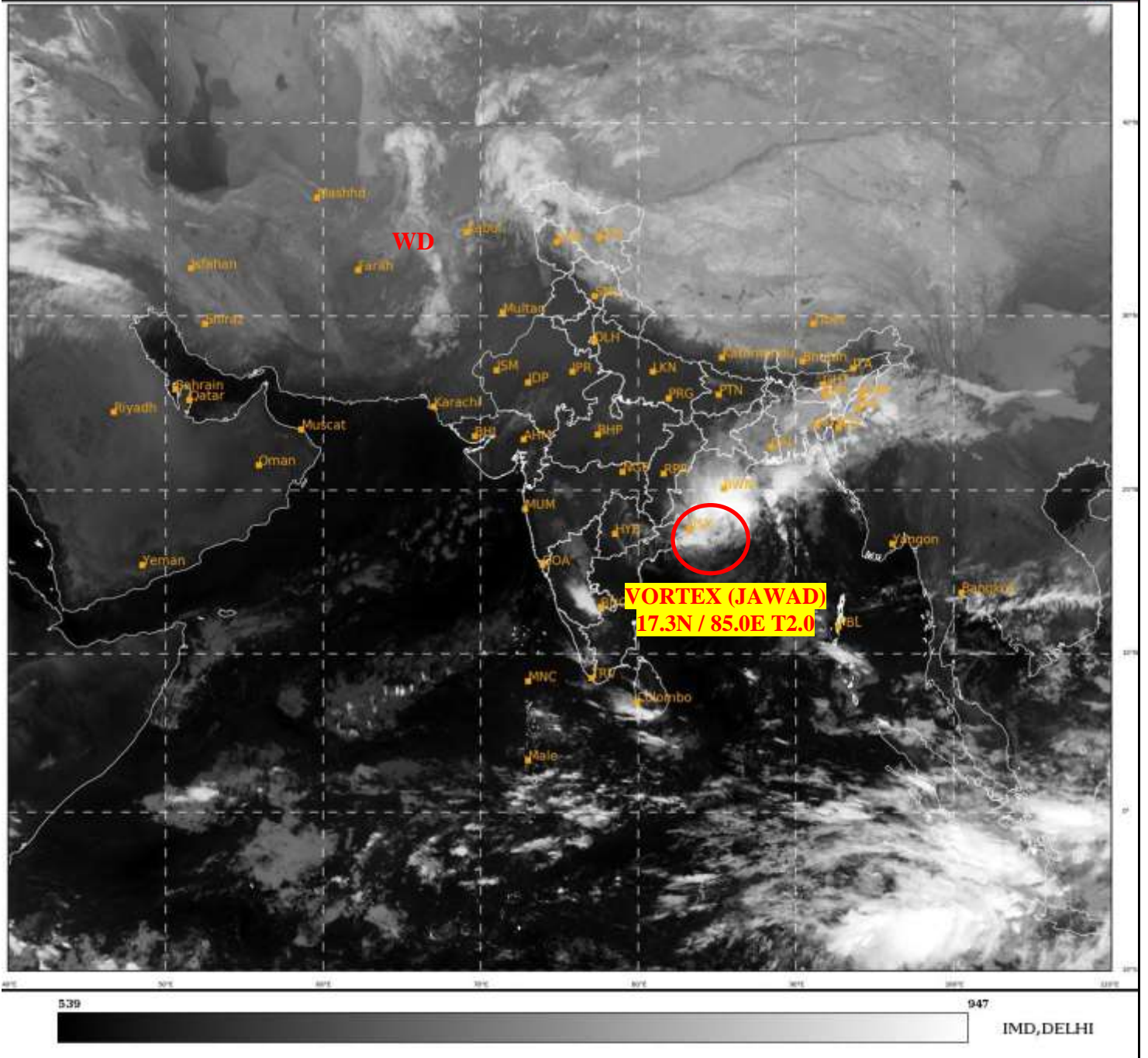




SATELLITE BULLETIN BASED ON SATELLITE
IMAGERIES AND PRODUCTS
04.12.2021 TIME 1800 UTC

SAT : INSAT-3D IMG
IMG_TIR1 10.8 um
LIC Mercator

04-12-2021/(1800 to 1826) GMT
04-12-2021/(2330 to 2356) IST



TCIN50 DEMS 041800

SATELLITE BULLETIN BASED ON INSAT-3D PIC OF 041800 UTC (.)

REGION COVERED BETWEEN LAT 50.0°N TO 30.0°S AND LONG 40.0°E TO 125.0°E (.)

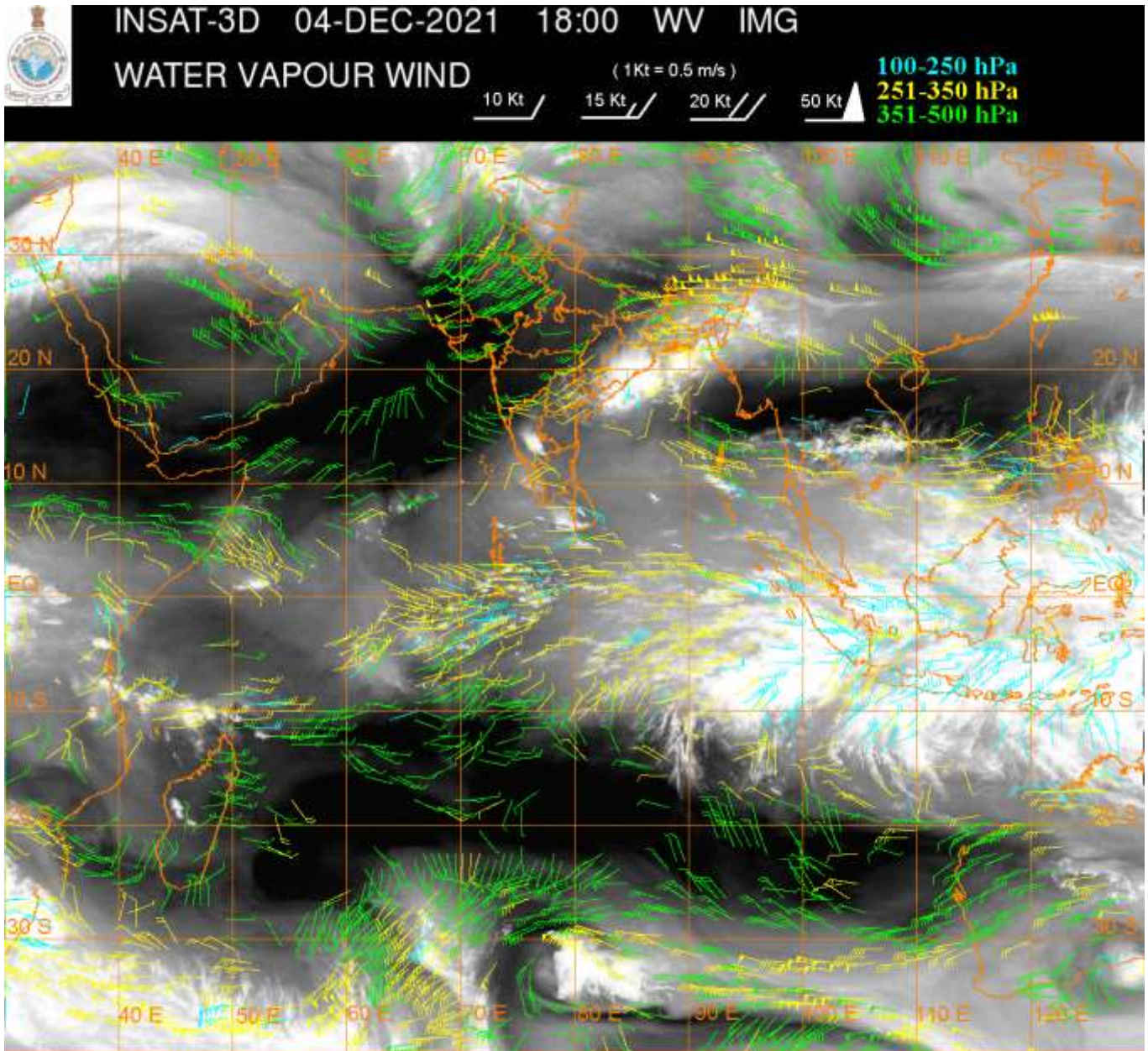
SALIENT FEATURES:-

VORTEX (JAWAD) OVER WC BAY AND N/HOOD:-

VORTEX (**JAWAD**) OVER WC BAY & N/HOOD LAY CENTERED NEAR **17.3N / 85.0E** (.) INTENSITY **T2.0** (.) THE AREA OF CONVECTION HAS SHIFTED TO NORTH-EAST SECTOR OF THE SYSTEM DURING LAST 03 HOURS (.) ASSOCIATED CLOUDING WITH EMBEDDED INT TO V INT CONVECTION ARE SEEN OVER N COTL AP SE ODISHA AND MODERATE CONVECTION OVER REST ORS JHRKND GWB (.) ASSTD SCT TO BKN LOW/MED CLOUDS WITH EMBDD INT TO V INT CONVTN OVER WC BAY NW BAY NORTH OF LAT 16.0N WEST OF LONG 89.0E (.) MINIMUM CTT MINUS **93** DEG C (.)

WESTERN DISTURBANCE (WD):-

SCT MULTILAYERED CLOUDS OVER AFGAN PAK J&K LADAKH HP AND N/HOOD IN ASSW WD OVER THE AREA (.)



CLOUDS DESCRIPTION WITHIN INDIA:-

NORTH:-

SCT LOW/MED CLOUDS WITH EMBDD MOD TO INT CONVTN OVER LADAKH N J&K AND WK TO MOD CONVTN OVER S J&K HP N UTRKND EXT SE UP (.) SCT LOW/MED CLOUDS OVER S UTRKND EXT SW UP (.)

EAST:-

SCT TO BKN LOW/MED CLOUDS WITH EMBDD INT TO V INT CONVTN OVER SE ORS (MINIMUM CTT MINUS 93 DEG C) (.) SCT LOW/MED CLOUDS WITH EMBDD MOD TO INT CONVTN OVER E MEGHA S ASSAM S NAGA MANI MIZO & BD (.) SCT LOW/MED CLOUDS WITH EMBDD WK TO MOD CONVTN OVER BHR JHRKND CHTGH REST ORS GWB SHWB SKM REST NE STATES (.)

WEST:-

SCT LOW/MED CLOUDS OVER S RAJ MP GUJ MAHA (.)

SOUTH:-

SCT LOW/MED CLOUDS WITH EMBDD INT TO V INT CONVTN OVER N COTL AP (MINIMUM CTT MINUS 85 DEG C) (.) SCT LOW/MED CLOUDS WITH EMBDD MOD TO INT CONVTN OVER SIK S ANDAMAN ILS (.) SCT LOW/MED CLOUDS WITH EMBDD WK TO MOD CONVTN OVER NIK E TLNGN S KER W TN (.) SCT LOW/MED CLOUDS OVER COTL KRNTK W TLNGN C COTL AP N KER E TN LKSDP REST ANDAMAN & NICOBAR ILS (.)

ARABIAN SEA:-

SCT LOW/MED CLOUDS WITH EMBDD MOD TO INT CONVTN OVER SC ARSEA AND COMORIN
(.) SCT LOW/MED CLOUDS WITH EMBDD WK TO MOD CONVTN OVER SE ARSEA OFF KER
COAST (.)

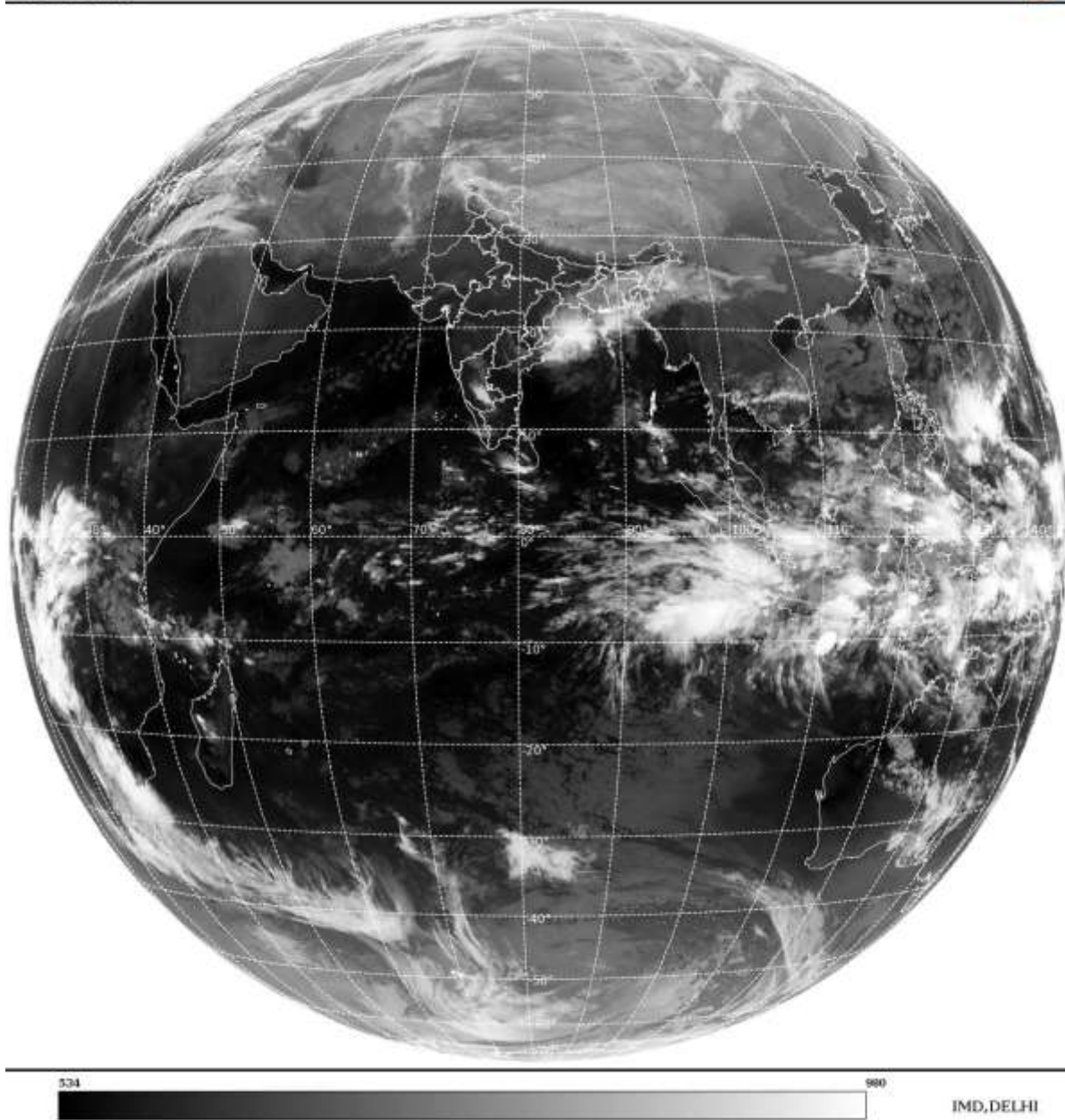
BAY OF BENGAL & ANDAMAN SEA:-

SCT TO BKN LOW/MED CLOUDS WITH EMBDD INT TO V INT CONVTN OVER WC AND NW BAY
(.) SCT LOW/MED CLOUDS WITH EMBDD MOD TO INT CONVTN OVER E BAY AND ANDAMAN
SEA (.)

CLOUDS DESCRIPTION OUTSIDE INDIA:- |

SAT : INSAT-3D IMG
Thermal Infrared1 Count 10.8 um
LIB FULL DISK

04-12-2021/(1800 to 1826) GMT
04-12-2021/(2330 to 2356) IST



SCT LOW/MED CLOUDS WITH EMBDD MOD TO INT CONVTN OVER S SRI LANKA MALDIVES
NEPAL TIBET CHINA E CHINA SEA MYANMAR S THAILAND GULF OF THAILAND CAMBODIA S
LAOS S VIETNAM SUMATRA STR OF MALACCA MALAYSIA SOUTH CHINA SEA BORNEO JAVA
ILS & SEA CELEBES ILS & SEA PHILIPPINES SULU SEA C MADAGASCAR AND OVER INDIAN
OCEAN BET 5.0N TO 16.0S EAST OF LONG 50.0E (.)

TOO 05/0045EF=

NNNN

LEGEND:-

REGION	NORTH	J&K HP PJB HARY DLH UP UTRKND
	EAST	BHR JHRKND CHTGH ORS WB SKM NORTH- EAST STATES
	WEST	RAJ MP GUJ MAHA GOA
	SOUTH	TLNGN AP KRNTK KER TN LKSDP ANDAMAN & NICOBAR ILS

CLOUD DISTRIBUTION	ISOL	ISOLATED (LESS THAN 25%)
	SCT	SCATTERED (25 TO 50%)
	BKN	BROKEN (51 TO 75%)
	SLD	SOLID (GREATER THAN 75%)
CLOUDS TOP TEMPERATURE	CTT	CLOUD TOP TEMPERATURE
CONVECTION	WK CONVTN	WEAK CONVECTION (CTT GREATER THAN -25°C)
	MOD CONVTN	MODERATE CONVECTION (CTT BETWEEN -25°C TO -40°C)
	INT CONVTN	INTENSE CONVECTION (CTT BETWEEN -41°C TO -70°C)
	V INT CONVTN	VERY INTENSE CONVECTION (CTT LESS THAN -70°C)
METEOROLOGICAL SUB-DIVISIONS, STATES & UNION TERRITORIES	ARUPR	ARUNACHAL PRADESH
	BHR	BIHAR
	CHTGH	CHHATTISGARH
	COTL AP	COASTAL ANDHRA PRADESH
	COTL KRNTK	COASTAL KARNATAKA
	COTL ORS	COASTAL ORISSA
	GUJ	GUJARAT
	GWB	GANGETIC WEST BENGAL
	HARY	HARYANA
	DLH	DELHI
	HP	HIMACHAL PRADESH
	J&K	JAMMU AND KASHMIR
	JHRKND	JHARKHAND
	KER	KERALA
	KKN	KONKAN
	LKSDP	LAKSHADWEEP
	M MAHA	MADHYA MAHARASHTRA
	MAHA	MAHARASHTRA
	MANI	MANIPUR
	MEGHA	MEGHALAYA
	MIZO	MIZORAM
	MP	MADHYA PRADESH
	MRTHWD	MARATHWADA
	NAGA	NAGALAND

	N COTL AP	NORTH COASTAL ANDHRA PRADESH
	NIK	NORTH INTERIOR KARNATAKA
	ORS	ORISSA
	PJB	PUNJAB
	RAJ	RAJASTHAN
	RYLSM	RAYALASEEMA
	SAU & KUTCH	SAURASHTRA & KUTCH
	SHWB	SUB-HIMALAYAN WEST BENGAL
	SIK	SOUTH INTERIOR KARNATAKA
	SKM	SIKKIM
	TLNGN	TELANGANA
	TN	TAMIL NADU
	TRP	TRIPURA
	UP	UTTAR PRADESH
	UTRKND	UTTARAKHAND
	VID	VIDHARBHA
	SHWB	SUB HIMALAYAN WEST BENGAL
	GWB	GANGETIC WEST BENGAL
	ARSEA	ARABIAN SEA
	ILS	ISLANDS
MISCELLANEOUS	ASSW	IN ASSOCIATION WITH
	ASSTD	ASSOCIATED
	LLC	LOW LEVEL CIRCULATION
	EMBDD	EMBEDDED
	N/HOOD	NEIGHBOURHOOD
	EXT	EXTREME