



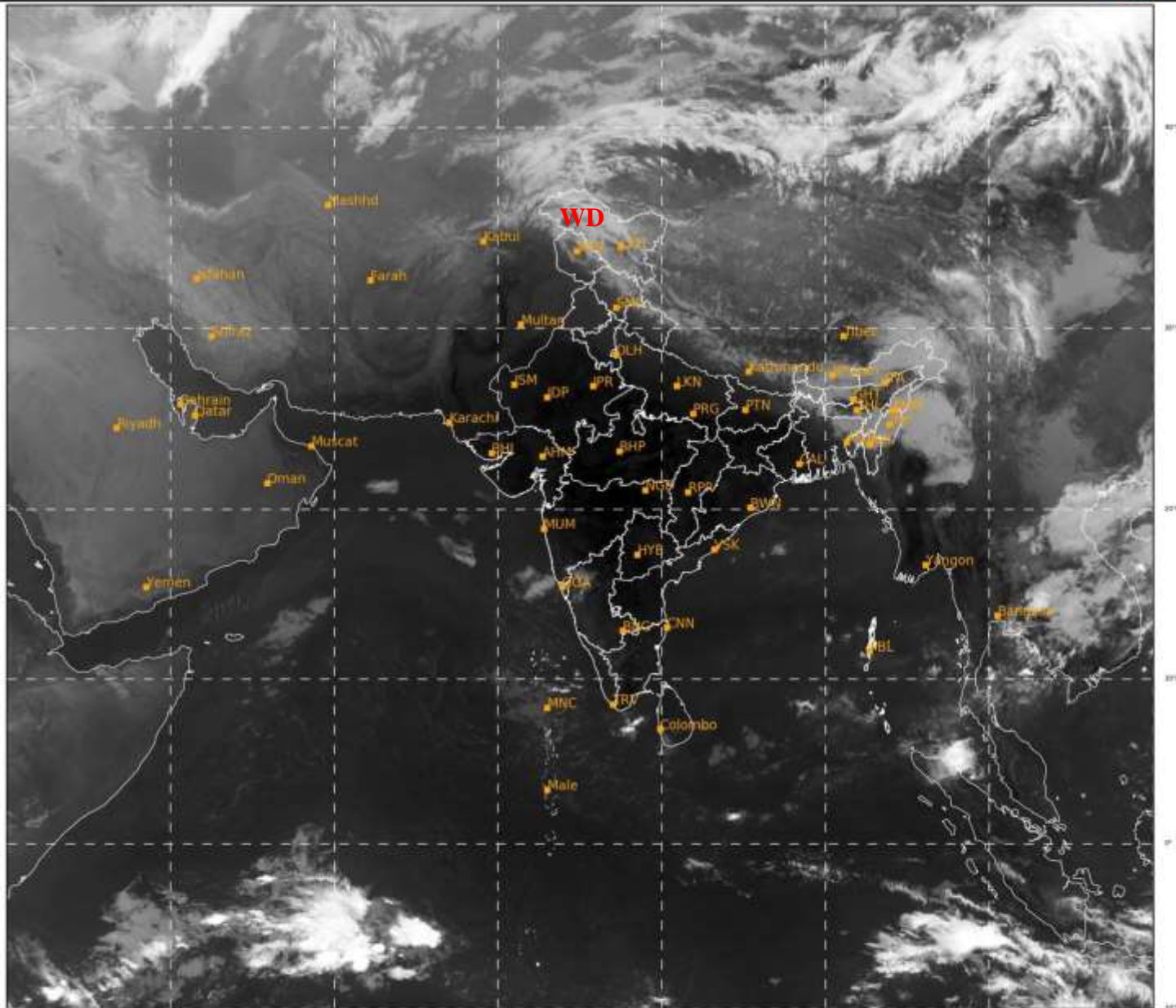
भारत मौसम विज्ञान विभाग
पृथ्वी विज्ञान मंत्रालय
India Meteorological Department
Ministry of Earth Sciences



**SATELLITE BULLETIN BASED ON SATELLITE
IMAGERIES AND PRODUCTS**
28.03.2022 TIME 0300 UTC

SAT : INSAT-3D IMG
IMG_TIR1 10.8 um
LIC Mercator

28-03-2022/(0300 to 0326) GMT
28-03-2022/(0830 to 0856) IST



432

915

IMD, DELHI

TCIN50 DEMS 280300

SATELLITE BULLETIN BASED ON INSAT-3D PIC OF 280300 UTC (.)

REGION COVERED BETWEEN LAT 50.0°N TO 30.0°S AND LONG 40.0°E TO 125.0°E (.)

SALIENT FEATURES:-

WESTERN DISTURBANCE (WD):-

SCT MULTILAYERED CLOUDS OVER EXTREME N PAK NW LADAKH N J&K AND N/HOOD IN ASSW **WD** OVER THE AREA (.)

PRECIPITATION NOWCASTING:-

(BASED ON SCOPE NOWCASTING TOOL AT 0200 UTC AT A LEAD TIME OF 3 HOURS):-

RAINFALL NOT OBSERVED OVER INDIAN REGION (.)



INSAT-3D 28-MAR-2022 03:00 WV IMG

WATER VAPOUR WIND

(1Kt = 0.5 m/s)

10 Kt

15 Kt

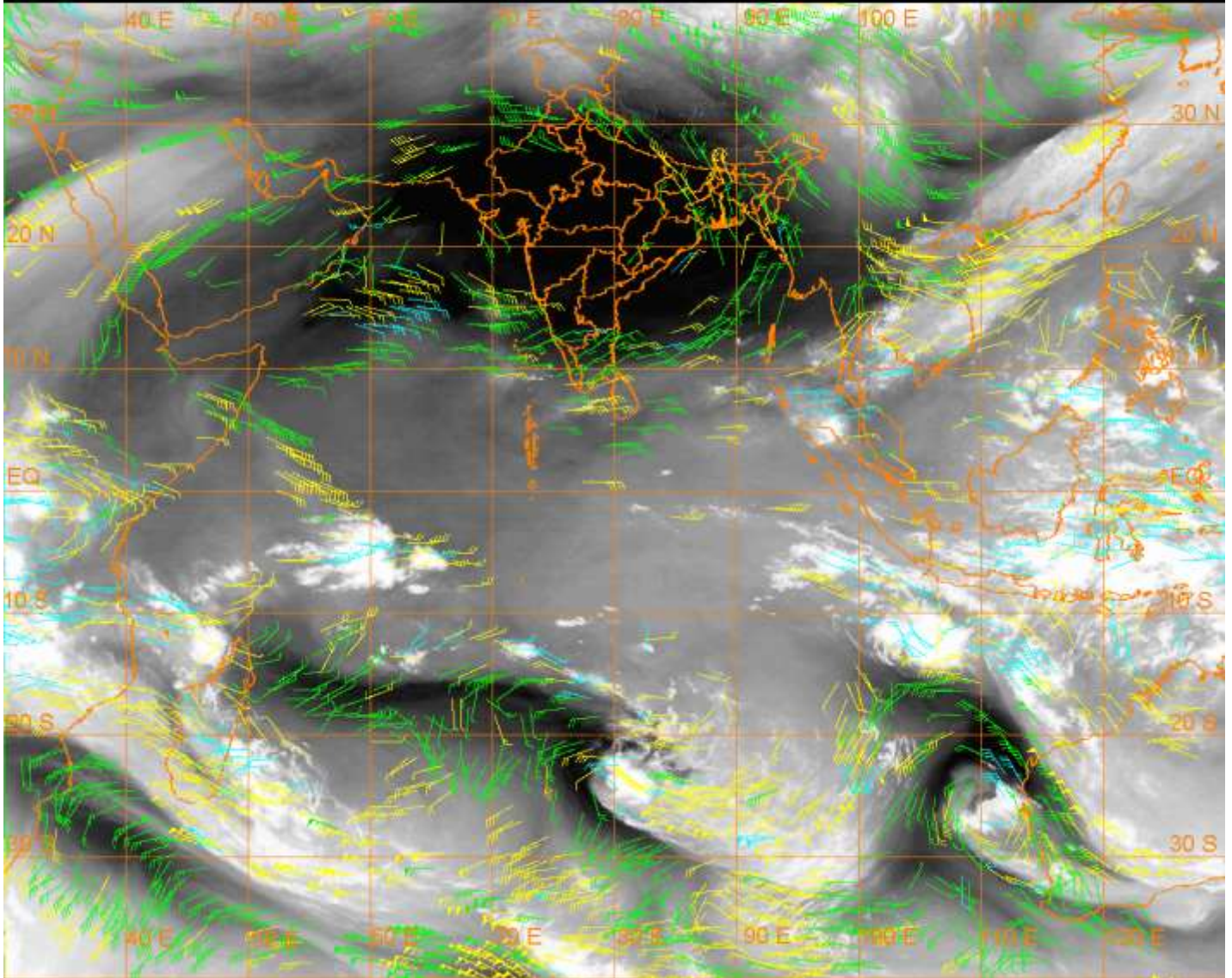
20 Kt

50 Kt

100-250 hPa

251-350 hPa

351-500 hPa



CLOUDS DESCRIPTION WITHIN INDIA:-

NORTH:-

SCT LOW/MED CLOUDS WITH EMBDD WK MOD CONVTN OVER LADAKH N J&K (.) SCT LOW/MED CLOUDS OVER N HP N UTRKND (.)

EAST:-

SCT LOW/MED CLOUDS WITH EMBDD WK CONVTN OVER N SHWB SKM NE STATES & N BD (.) ISOL LOW/MED CLOUDS OVER EXT NE BHR NE ORS (.)

WEST:-

ISOL LOW/MED CLOUDS OVER S KKN (.)

SOUTH:-

SCT LOW/MED CLOUDS OVER WEST NIK SW SIK N COTL AP KER TN LKSDP ANDAMAN & NICOBAR ILS (.)

ARABIAN SEA:-

SCT LOW/MED CLOUDS WITH EMBDD WK TO MOD CONVTN OVER COMORIN AREA SE ARSEA (.) SCT LOW/MED CLOUDS OVER REST ARSEA (.)

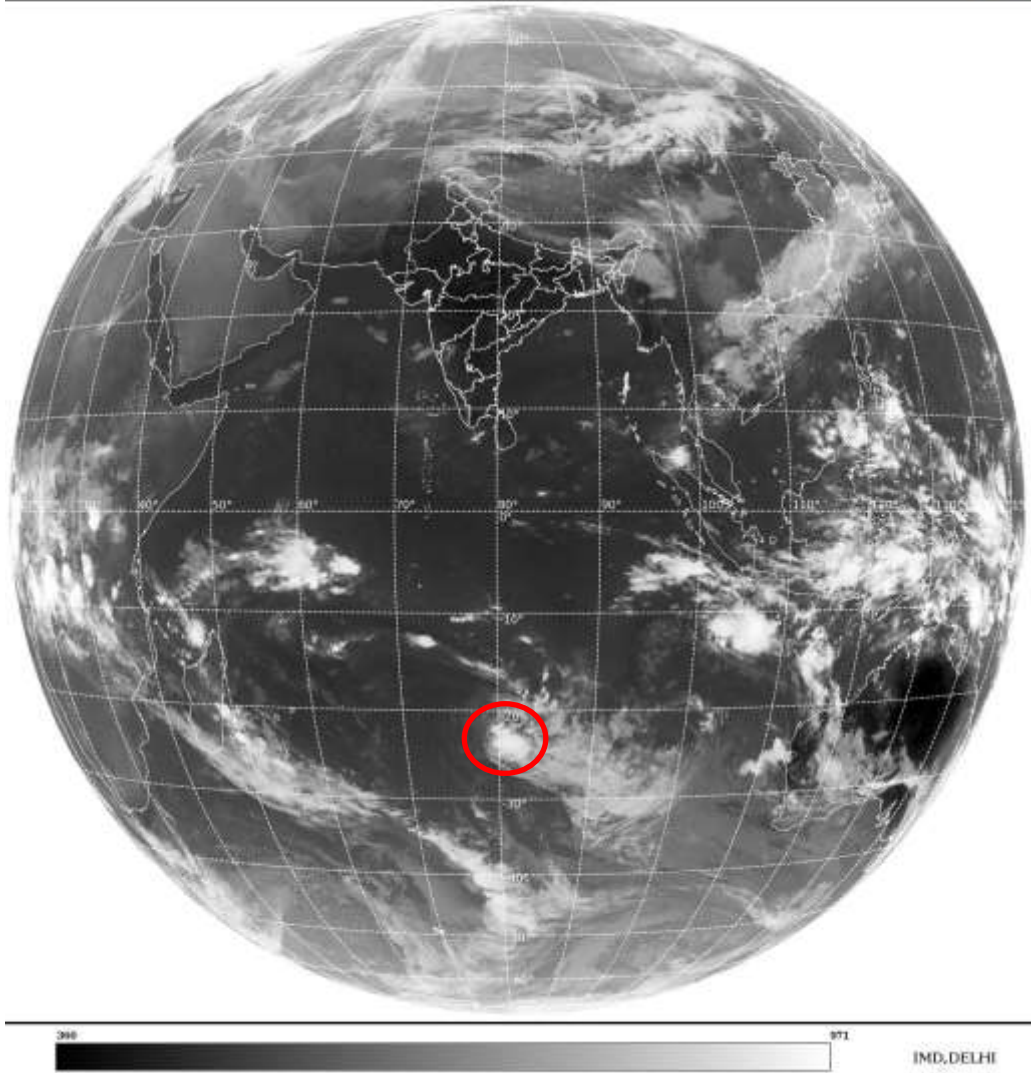
BAY OF BENGAL & ANDAMAN SEA:-

SCT LOW/MED CLOUDS WITH EMBDD WK TO MOD CONVTN OVER SE BAY AND ANDAMAN SEA (.) SCT LOW/MED CLOUDS OVER REST BAY (.)

CLOUDS DESCRIPTION OUTSIDE INDIA:

SAT : INSAT-3D IMG
Thermal Infrared1 Count 10.8 um
L1B FULL DISK

28-03-2022/(0300 to 0326) GMT
28-03-2022/(0830 to 0856) IST



VORTEX (HALIMA) OVER SOUTH INDIAN OCEAN:-

VORTEX (HALIMA) OVER SOUTH INDIAN OCEAN CENTERED NEAR 21.6S / 79.6E (.) INTENSITY T2.5/3.0 (.) ASSTD SCT TO BKN LOW/MED CLOUDS WITH EMBDD INT TO V INT CONVTN OVER AREA BET LAT 21.0S TO 25.5S LONG 79.0E TO 83.0E (.)

SCT LOW/MED CLOUDS WITH EMBDD MOD TO INT CONVTN OVER CHINA E CHINA SEA TAIWAN MYANMAR THAILAND GULF OF THAILAND CAMBODIA LAOS VIETNAM GULF OF TONKIN HAINAN SUMATRA STR OF MALACCA MALAYSIA BORNEO S CHINA SEA JAVA ILS & SEA CELEBES ILS & SEA PHILIPPINES SULU SEA MADAGASCAR MOZAMBIQUE CHANNEL AND OVER INDIAN OCEAN BET EQ TO LAT 30.0S LONG 42.0E TO 120.0E (.)

TOO 28/0930 HRS IST=

NNNN

LEGEND:-

REGION	NORTH	J&K HP PJB HARY DLH UP UTRKND
	EAST	BHR JHRKND CHTGH OR WB SKM NORTH- EAST STATES
	WEST	RAJ MP GUJ MAHA GOA
	SOUTH	TLNGN AP KRNTK KER TN LKSDP ANDAMAN & NICOBAR ILS

CLOUD DISTRIBUTION	ISOL	ISOLATED (LESS THAN 25%)	
	SCT	SCATTERED (25 TO 50%)	
	BKN	BROKEN (51 TO 75%)	
	SLD	SOLID (GREATER THAN 75%)	
CLOUDS TOP TEMPERATURE	CTT	CLOUD TOP TEMPERATURE	
CONVECTION	WK CONVTN	WEAK CONVECTION (CTT GREATER THAN -25°C)	
	MOD CONVTN	MODERATE CONVECTION (CTT BETWEEN -25°C TO -40°C)	
	INT CONVTN	INTENSE CONVECTION (CTT BETWEEN -41°C TO -70°C)	
	V INT CONVTN	VERY INTENSE CONVECTION (CTT LESS THAN -70°C)	
METEOROLOGICAL SUB-DIVISIONS, STATES & UNION TERRITORIES	ARUPR	ARUNACHAL PRADESH	
	BHR	BIHAR	
	CHTGH	CHHATTISGARH	
	COTL AP	COASTAL ANDHRA PRADESH	
	COTL KRNTK	COASTAL KARNATAKA	
	COTL ORS	COASTAL ORISSA	
	GUJ	GUJARAT	
	GWB	GANGETIC WEST BENGAL	
	HARY	HARYANA	
	DLH	DELHI	
	HP	HIMACHAL PRADESH	
	J&K	JAMMU AND KASHMIR	
	JHRKND	JHARKHAND	
	KER	KERALA	
	KKN	KONKAN	
	LKSDP	LAKSHADWEEP	
	M MAHA	MADHYA MAHARASHTRA	
	MAHA	MAHARASHTRA	
	MANI	MANIPUR	
	MEGHA	MEGHALAYA	
	MIZO	MIZORAM	
	MP	MADHYA PRADESH	
		MRTHWD	MARATHWADA
		NAGA	NAGALAND
N COTL AP		NORTH COASTAL ANDHRA PRADESH	
NIK		NORTH INTERIOR KARNATAKA	
ORS		ORISSA	
PJB		PUNJAB	
RAJ		RAJASTHAN	
RYLSM		RAYALASEEMA	
SAU & KUTCH		SAURASHTRA & KUTCH	
SHWB		SUB-HIMALAYAN WEST BENGAL	
SIK		SOUTH INTERIOR KARNATAKA	
SKM		SIKKIM	

	TLNGN	TELANGANA
	TN	TAMIL NADU
	TRP	TRIPURA
	UP	UTTAR PRADESH
	UTRKND	UTTARAKHAND
	VID	VIDHARBHA
	SHWB	SUB HIMALAYAN WEST BENGAL
	GWB	GANGETIC WEST BENGAL
	ARSEA	ARABIAN SEA
	ILS	ISLANDS
MISCELLANEOUS	ASSW	IN ASSOCIATION WITH
	ASSTD	ASSOCIATED
	LLC	LOW LEVEL CIRCULATION
	EMBDD	EMBEDDED
	N/HOOD	NEIGHBOURHOOD
	EXT	EXTREME