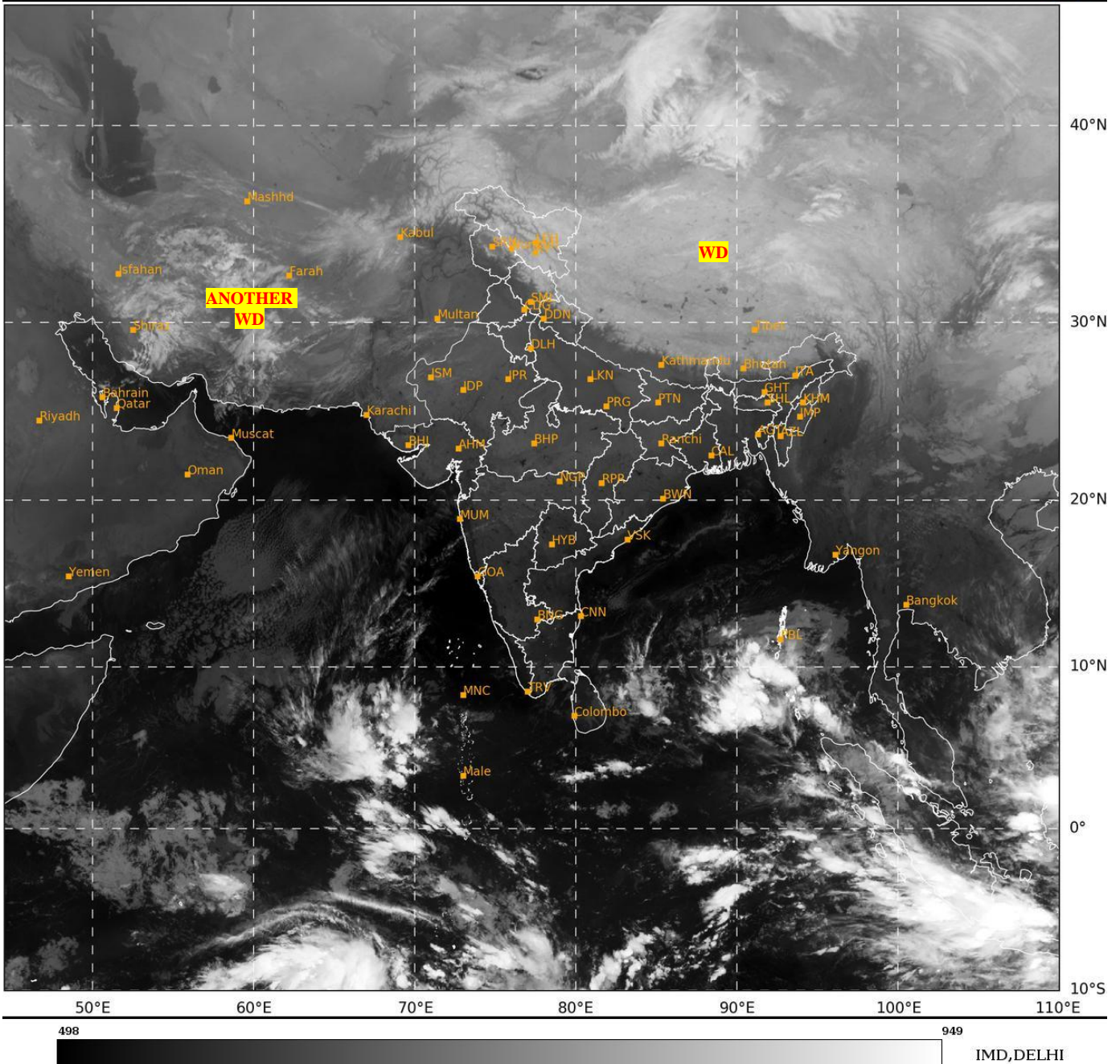




**SATELLITE BULLETIN BASED ON SATELLITE  
IMAGERIES AND PRODUCTS**  
**08.01.2025 TIME 2100 UTC**

SAT : INSAT-3DR IMG  
IMG\_TIR1 10.8 um  
LIC Mercator

08-01-2025/(2115 to 2142) GMT  
09-01-2025/(0245 to 0312) IST



TCIN50 DEMS 082100

SATELLITE BULLETIN BASED ON INSAT-3DR PIC OF 082115 UTC (.)

REGION COVERED BETWEEN LAT 50.0°N TO 35.0°S AND LONG 40.0°E TO 125.0°E (.)

**SALIENT FEATURES:-**

**WESTERN DISTURBANCE:-**

SCT MULTILAYERED CLOUDS OVER TIBET ADJ CHINA IN ASSW **WD** OVER THE AREA (.)

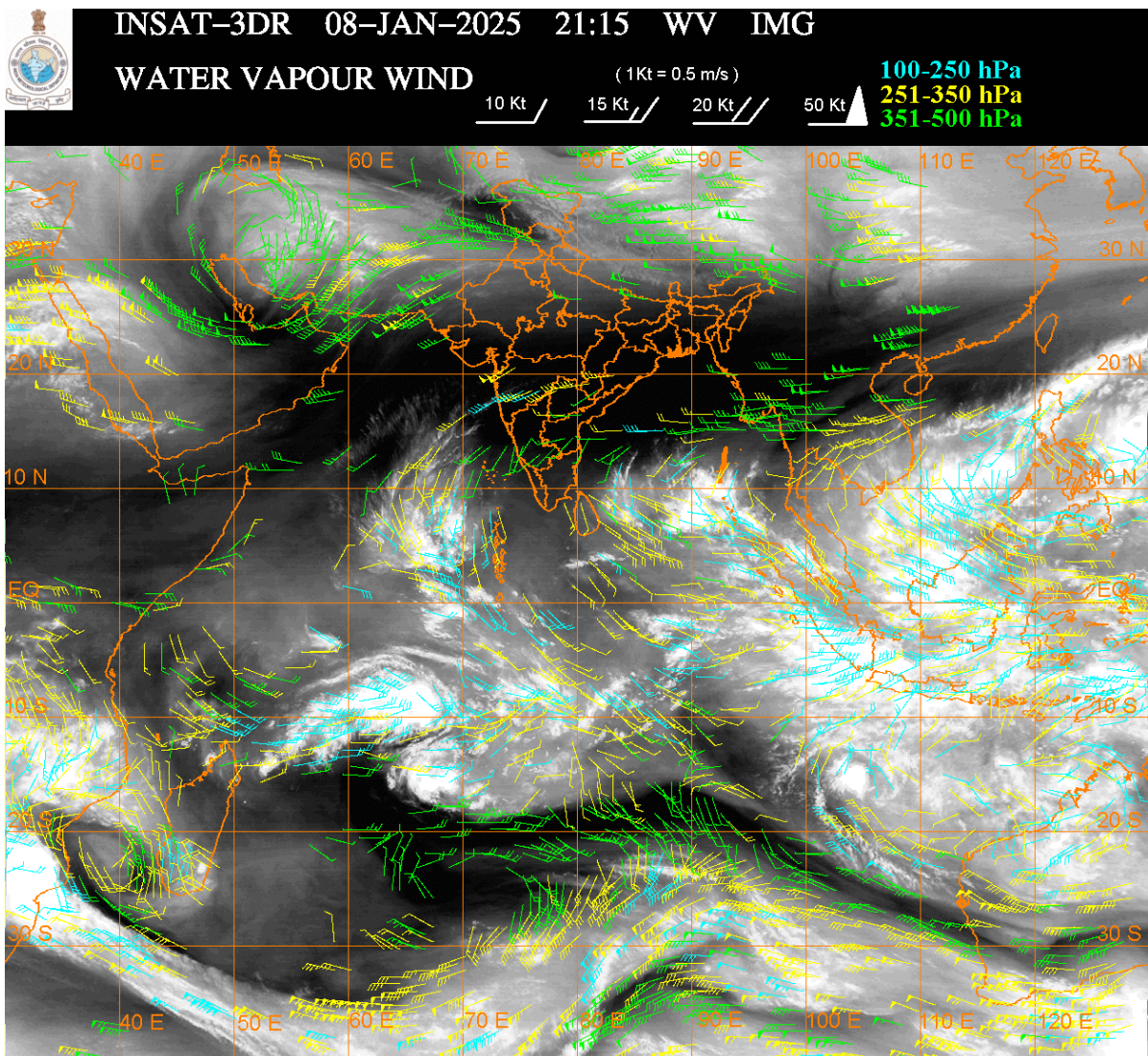
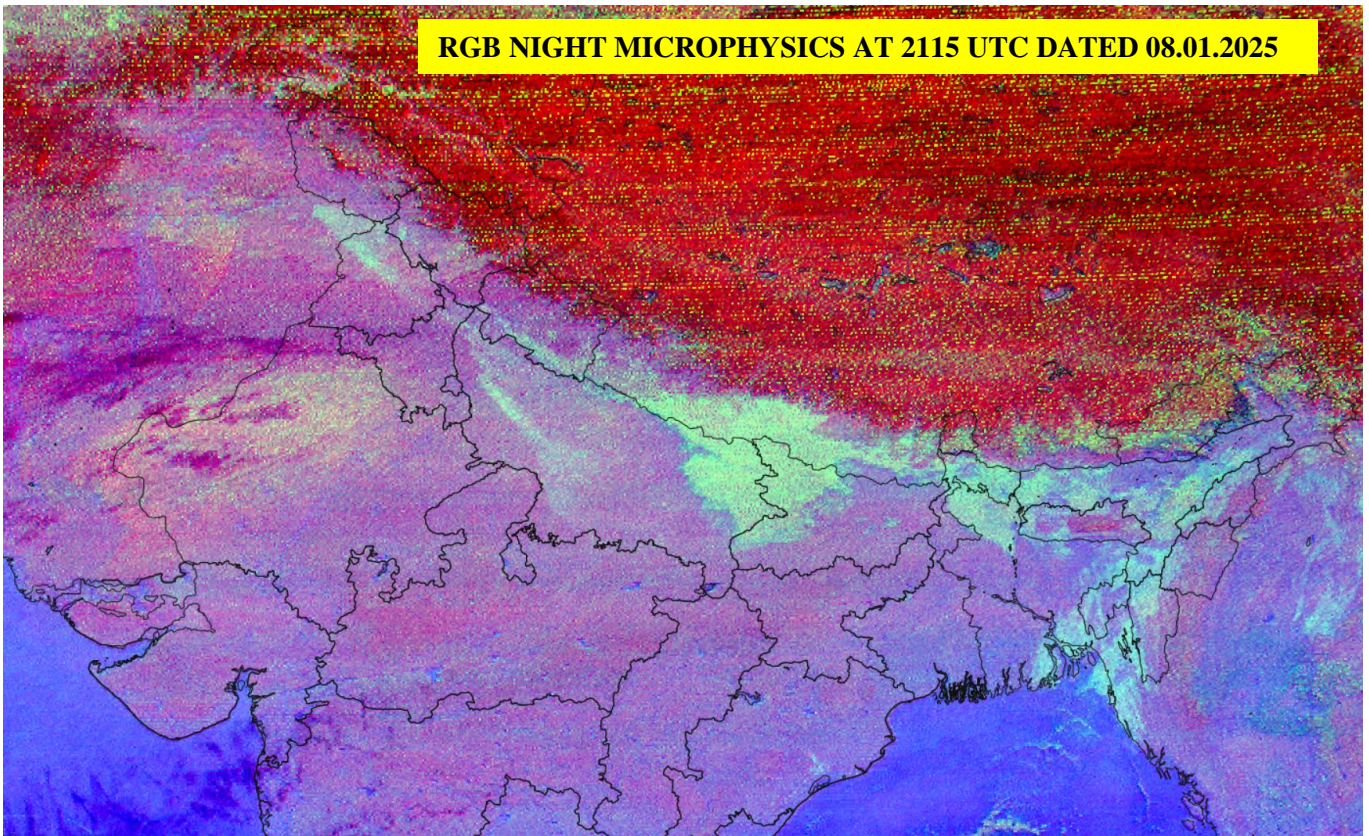
SCT MULTILAYERED CLOUDS OVER PERSIAN GULF IRAN AND N/HOOD IN ASSW **ANOTHER WD** OVER THE AREA (.)

**FOG / LOW CLOUDS:-**

RGB COMPOSITE NIGHT MICROPHYSICS IMAGERY OF INSAT 3DR (RAPID) AT 2115 UTC SHOWS SCT FOG / LOW CLOUDS OVER S HP S UTRKND N & SE PJB NE HARY UP BHR S NEPAL S COTL ORS SHWB SKM NE STATES & BD (.)



**RGB NIGHT MICROPHYSICS AT 2115 UTC DATED 08.01.2025**



**CLOUDS DESCRIPTION WITHIN INDIA:-**

**NORTH:-**

SCT LOW/MED CLOUDS WITH EMBDD ISOL WK TO MOD CONVTN OVER J&K LADAKH N HP N UTRKND (.) ISOL TO SCT LOW/MED CLOUDS OVER S HP S UTRKND S PJB N HARY N UP (.)

**EAST:-**

SCT LOW/MED CLOUDS WITH EMBDD ISOL WK CONVTN OVER SKM ARUPR (.) SCT LOW/MED CLOUDS OVER N BHR SHWB REST NE STATES & BD (.)

**WEST:-**

SCT LOW/MED CLOUDS OVER W RAJ SW MP SE GUJ MAHA (.)



**SOUTH:-**

SCT LOW/MED CLOUDS WITH EMBDD INT TO V INT CONVTN OVER NICOBAR ILS AREA AND WK TO MOD CONVTN OVER ANDAMAN ILS AREA (.) SCT LOW/MED CLOUDS OVER S TLNGN COTL AP KER TN LKSDP ILS AREA (.)

**ARABIAN SEA:-**

SCT LOW/MED CLOUDS WITH EMBDD MOD TO INT CONVTN OVER SOUTH ARSEA MALDIVES AREA AND ISOL WK TO MOD CONVTN OVER CENTRAL ARSEA (.)

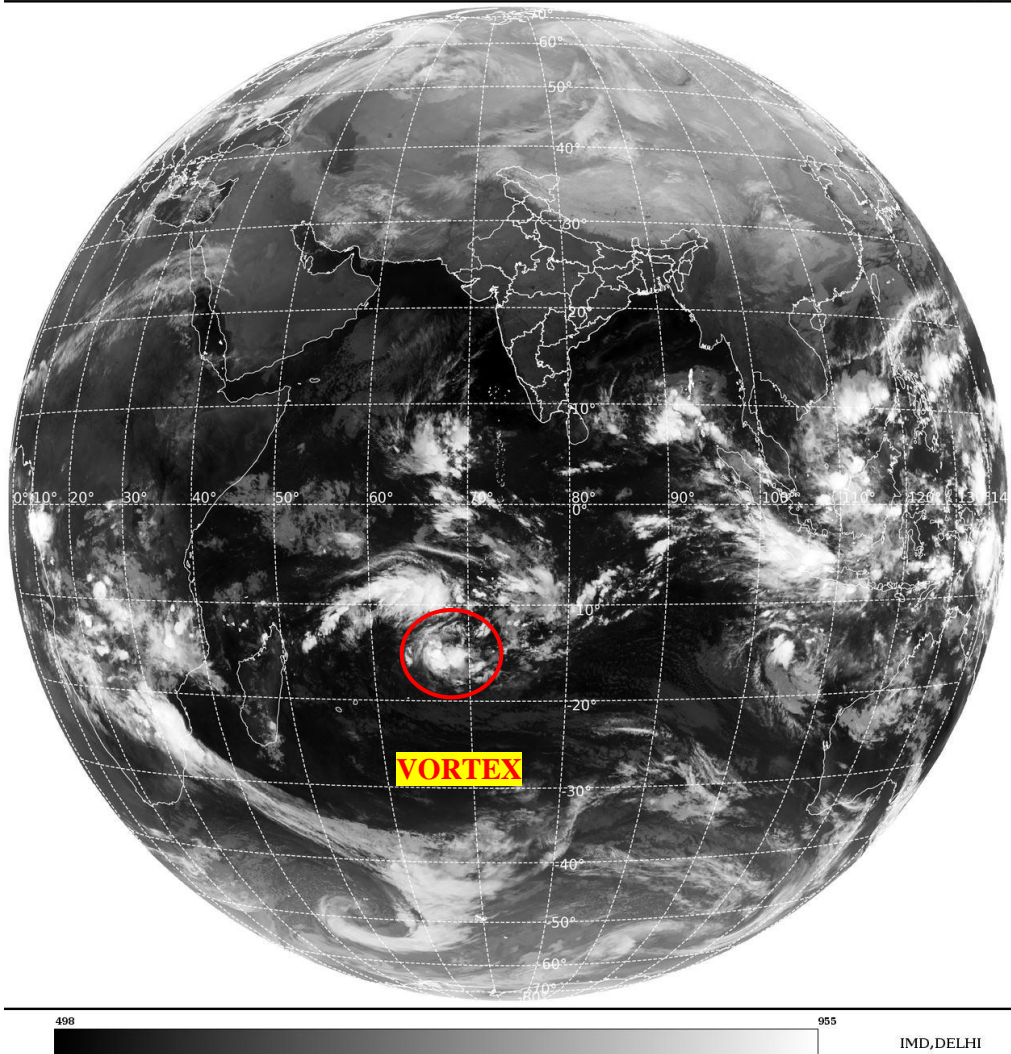
**BAY OF BENGAL & ANDAMAN SEA:-**

SCT LOW/MED CLOUDS WITH EMBDD INT TO V INT CONVTN OVER SE BAY SOUTH ANDAMAN SEA AND MOD TO INT CONVTN OVER SW BAY NORTH ANDAMAN SEA (.) SCT LOW/MED CLOUDS WITH EMBDD ISOL WK CONVTN OVER CENTRAL BAY (.) SCT LOW/MED CLOUDS OVER NORTH BAY (.)

**CLOUDS DESCRIPTION OUTSIDE INDIA:-**

SAT : INSAT-3DR IMG  
Thermal Infrared1 Count 10.8 um  
LIB FULL DISK

08-01-2025/(2115 to 2142) GMT  
09-01-2025/(0245 to 0312) IST



**VORTEX OVER SOUTH INDIAN OCEAN:-**

VORTEX OVER SOUTH INDIAN OCEAN (**AREA D40 ADJ D60 & E80**) CENTERED NEAR **15.0S / 67.4E** (.) INTENSITY **T1.5/2.0** (.) MAXIMUM SUSTAINED WINDS **28-33 KTS** (.) ASSTD SCT TO BKN LOW/MED CLOUDS WITH EMBDD INT TO V INT CONVTN OVER AREA BET LAT 12.0S TO 18.0S LONG 66.0E TO 75.0E (.)

SCT LOW/MED CLOUDS WITH EMBDD MOD TO INT CONVTN OVER MALDIVES TIBET CHINA SOUTH VIETNAM SUMATRA STR OF MALACCA MALAYSIA BORNEO SOUTH CHINA SEA JAVA ILS & SEA CELEBES ILS & SEA PHILIPPINES SULU SEA MADAGASCAR MOZAMBIQUE CHANNEL AND OVER INDIAN OCEAN BET LAT 5.0N TO 30.0S LONG 40.0E TO 120.0E (.)

TOO 09/0445 EF=

NNNN

**LEGEND:-**

|   |                      |  |                   |
|---|----------------------|--|-------------------|
| <b>REGION</b>   | <b>NORTH</b>         | <b>J&amp;K HP PJB HARY DLH UP UTRKND</b>                         |                   |
|   | <b>EAST</b>          | <b>BHR JHRKND CHTGH ORS WB<br/>SKM NORTH- EAST STATES</b>        |                   |
|   | <b>WEST</b>          | <b>RAJ MP GUJ MAHA GOA</b>                                       |                   |
|   | <b>SOUTH</b>         | <b>TLNGN AP KRNTK KER TN LKSDP<br/>ANDAMAN &amp; NICOBAR ILS</b> |                   |
| <b>CLOUD DISTRIBUTION</b>   | <b>ISOL</b>          | <b>ISOLATED (LESS THAN 25%)</b>                                  |                   |
|   | <b>SCT</b>           | <b>SCATTERED (25 TO 50%)</b>                                     |                   |
|   | <b>BKN</b>           | <b>BROKEN (51 TO 75%)</b>  |                   |
|   | <b>SLD</b>           | <b>SOLID (GREATER THAN 75%)</b>                                  |                   |
| <b>CLOUDS TOP TEMPERATURE</b>   | <b>CTT</b>           | <b>CLOUD TOP TEMPERATURE</b>                                     |                   |
| <b>CONVECTION</b>   | <b>WK CONV TN</b>    | <b>WEAK CONVECTION<br/>(CTT GREATER THAN -25°C)</b>              |                   |
|   | <b>MOD CONV TN</b>   | <b>MODERATE CONVECTION<br/>(CTT BETWEEN -25°C TO -40°C)</b>      |                   |
|   | <b>INT CONV TN</b>   | <b>INTENSE CONVECTION<br/>(CTT BETWEEN -41°C TO -70°C)</b>       |                   |
|   | <b>V INT CONV TN</b> | <b>VERY INTENSE CONVECTION<br/>(CTT LESS THAN -70°C)</b>         |                   |
| <b>METEOROLOGICAL<br/>SUB- DIVISIONS,<br/>STATES &amp; UNION<br/>TERITORIES</b> | <b>ARUPR</b>         | <b>ARUNACHAL PRADESH</b>   |                   |
|   | <b>BHR</b>           | <b>BIHAR</b>   |                   |
|   | <b>CHTGH</b>         | <b>CHHATTISGARH</b>  |                   |
|   | <b>COTL AP</b>       | <b>COASTAL ANDHRA PRADESH</b>                                    |                   |
|   | <b>COTL KRNTK</b>    | <b>COASTAL KARNATAKA</b>   |                   |
|   | <b>COTL ORS</b>      | <b>COASTAL ORISSA</b>  |                   |
|   | <b>GUJ</b>           | <b>GUJARAT</b>   |                   |
|   | <b>GWB</b>           | <b>GANGETIC WEST BENGAL</b>                                      |                   |
|   | <b>HARY</b>          | <b>HARYANA</b>   |                   |
|   | <b>DLH</b>           | <b>DELHI</b>   |                   |
|   | <b>HP</b>            | <b>HIMACHAL PRADESH</b>  |                   |
|   | <b>J&amp;K</b>       | <b>JAMMU AND KASHMIR</b>   |                   |
|   | <b>JHRKND</b>        | <b>JHARKHAND</b>   |                   |
|   | <b>KER</b>           | <b>KERALA</b>  |                   |
|   | <b>KKN</b>           | <b>KONKAN</b>  |                   |
|   | <b>LKSDP</b>         | <b>LAKSHADWEEP</b>   |                   |
|   | <b>M MAHA</b>        | <b>MADHYA MAHARASHTRA</b>  |                   |
|   | <b>MAHA</b>          | <b>MAHARASHTRA</b>   |                   |
|   | <b>MANI</b>          | <b>MANIPUR</b>   |                   |
|   | <b>MEGHA</b>         | <b>MEGHALAYA</b>   |                   |
|   | <b>MIZO</b>          | <b>MIZORAM</b>   |                   |
|   | <b>MP</b>            | <b>MADHYA PRADESH</b>  |                   |
|   |                      | <b>MRTHWD</b>  | <b>MARATHWADA</b> |
|   |                      | <b>NAGA</b>  | <b>NAGALAND</b>   |
| <b>N COTL AP</b>  |                      | <b>NORTH COASTAL ANDHRA<br/>PRADESH</b>                          |                   |
| <b>NIK</b>  |                      | <b>NORTH INTERIOR KARNATAKA</b>                                  |                   |

|                      |                        |                                  |
|----------------------|------------------------|----------------------------------|
|                      | <b>ORS</b>             | <b>ORISSA</b>                    |
|                      | <b>PJB</b>             | <b>PUNJAB</b>                    |
|                      | <b>RAJ</b>             | <b>RAJASTHAN</b>                 |
|                      | <b>RYLSM</b>           | <b>RAYALASEEMA</b>               |
|                      | <b>SAU &amp; KUTCH</b> | <b>SAURASHTRA &amp; KUTCH</b>    |
|                      | <b>SHWB</b>            | <b>SUB-HIMALAYAN WEST BENGAL</b> |
|                      | <b>SIK</b>             | <b>SOUTH INTERIOR KARNATAKA</b>  |
|                      | <b>SKM</b>             | <b>SIKKIM</b>                    |
|                      | <b>TLNGN</b>           | <b>TELANGANA</b>                 |
|                      | <b>TN</b>              | <b>TAMIL NADU</b>                |
|                      | <b>TRP</b>             | <b>TRIPURA</b>                   |
|                      | <b>UP</b>              | <b>UTTAR PRADESH</b>             |
|                      | <b>UTRKND</b>          | <b>UTTARAKHAND</b>               |
|                      | <b>VID</b>             | <b>VIDHARBHA</b>                 |
|                      | <b>SHWB</b>            | <b>SUB HIMALAYAN WEST BENGAL</b> |
|                      | <b>GWB</b>             | <b>GANGETIC WEST BENGAL</b>      |
|                      | <b>ARSEA</b>           | <b>ARABIAN SEA</b>               |
|                      | <b>ILS</b>             | <b>ISLANDS</b>                   |
| <b>MISCELLANEOUS</b> | <b>ASSW</b>            | <b>IN ASSOCIATION WITH</b>       |
|                      | <b>ASSTD</b>           | <b>ASSOCIATED</b>                |
|                      | <b>LLC</b>             | <b>LOW LEVEL CIRCULATION</b>     |
|                      | <b>EMBDD</b>           | <b>EMBEDDED</b>                  |
|                      | <b>N/HOOD</b>          | <b>NEIGHBOURHOOD</b>             |
|                      | <b>EXT</b>             | <b>EXTREME</b>                   |