



भारत मौसम विज्ञान विभाग  
पृथ्वी विज्ञान मंत्रालय  
India Meteorological Department  
Ministry of Earth Sciences

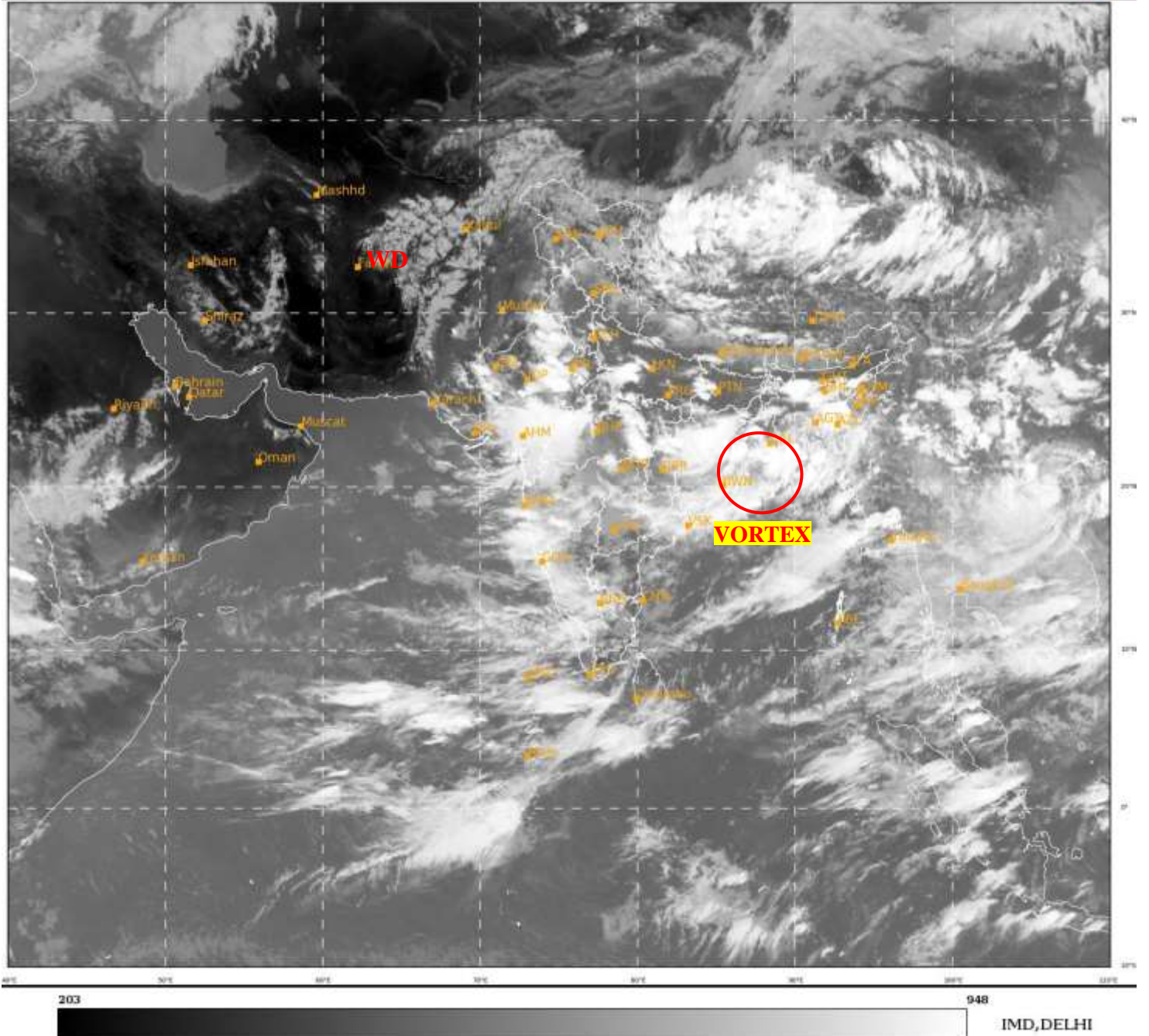


**SATELLITE BULLETIN BASED ON SATELLITE IMAGERIES  
AND PRODUCTS**

**23.07.2021 TIME 0900 UTC**

SAT : INSAT-3D IMG  
IMG\_TIR1 10.8 um  
LIC Mercator

23-07-2021/(0900 to 0926) GMT  
23-07-2021/(1430 to 1456) IST



TCIN50 DEMS 230900

SATELLITE BULLETIN BASED ON INSAT-3D PIC OF 230900 UTC (.)

REGION COVERED BETWEEN LAT 50.0°N TO 30.0°S AND LONG 40.0°E TO 125.0°E (.)

**SATLIENT FEATURES:-**

**VORTEX OVER N COTL ORS ADJ NW BAY COTL GWB & N/HOOD:-**

BKN LOW/MED CLOUDS WITH EMBDD INT TO V INT CONVTN OVER COTL ORS NW BAY COTL GWB AND N/HOOD IN ASSW WITH **VORTEX** OVER THE AREA (.) CENTRE NOT CLEARLY DEFINED IN IR/VIS IMAGERY (.) MINIMUM CTT MINUS **90** DEG CEL (.)

**WESTERN DISTURBANCE (WD):-**

SCT MULTILAYERED CLOUDS OVER AFGAN PAK LADAKH AND N/HOOD IN ASSW **WD** OVER THE AREA (.)





INSAT-3D 23-JUL-2021 09:00 WV IMG

WATER VAPOUR WIND

(1Kt = 0.5 m/s)

10 Kt

15 Kt

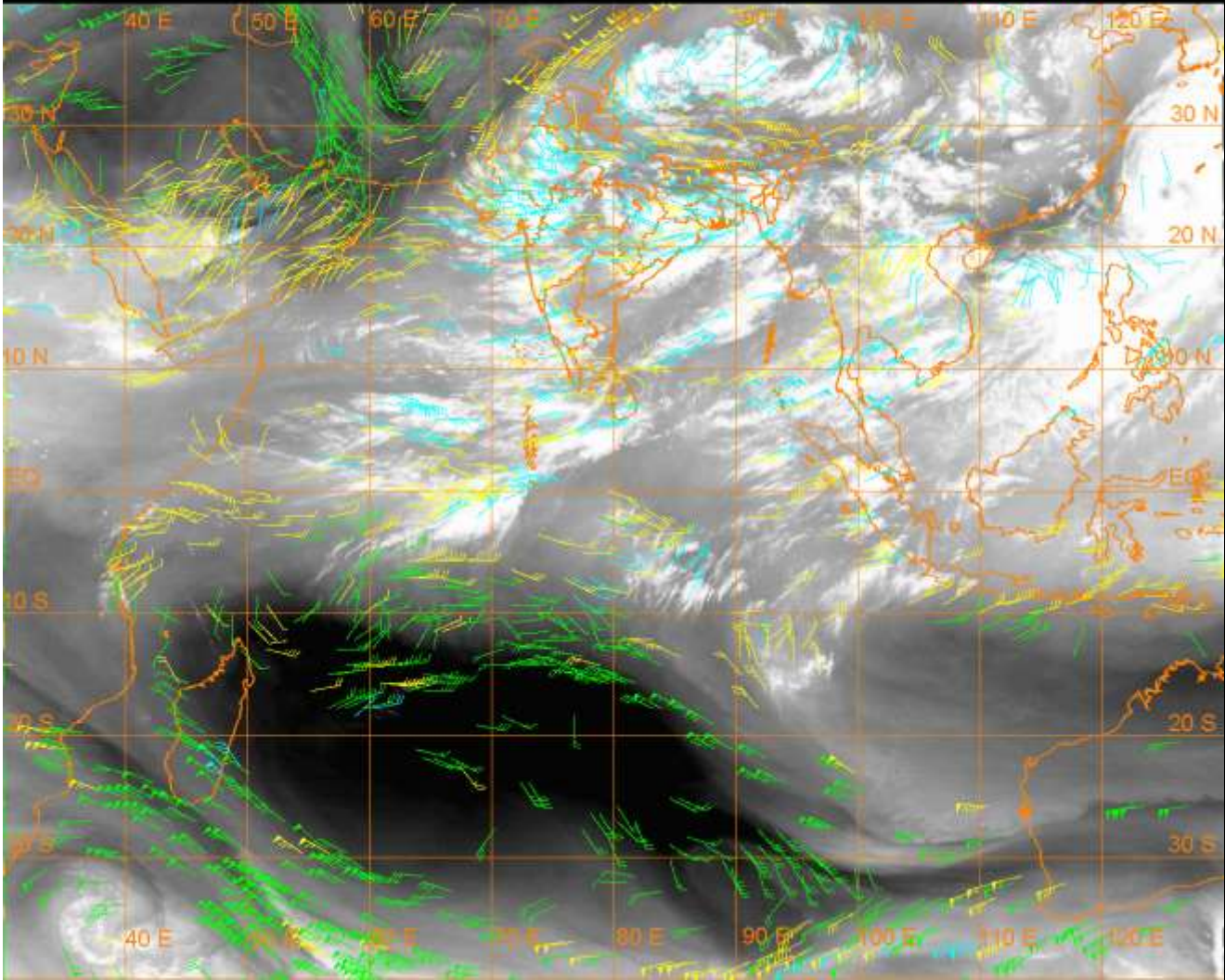
20 Kt

50 Kt

100-250 hPa

251-350 hPa

351-500 hPa



### **CLOUDS DESCRIPTION WITHIN INDIA:-**

#### **NORTH:-**

SCT LOW/MED CLOUDS WITH EMBDD INT TO V INT CONVTN OVER SW & EC UP (.) SCT LOW/MED CLOUDS WITH EMBDD MOD TO INT CONVTN OVER S J&K N & SW PJB C HARY REST UP AND WK TO MOD CONVTN OVER N J&K LADAKH HP UTRKND REST HARY (.) SCT LOW/MED CLOUDS OVER REST PJB DLH (.)

#### **EAST:-**

SCT TO BKN LOW/MED CLOUDS WITH EMBDD INT TO V INT CONVTN OVER W BHR JHRKND N CHTGH N ORS GWB MEGHA ASSAM N NAGA S MANI N MIZO N TRP & BD (.) SCT LOW/MED CLOUDS WITH EMBDD MOD TO INT CONVTN OVER S CHTGH S ORS EXT EC BHR SHWB REST NE STATES (.) SCT LOW/MED CLOUDS WITH EMBDD WK TO MOD CONVTN OVER REST E BHR SKM (.)

#### **WEST:-**

SCT TO BKN LOW/MED CLOUDS WITH EMBDD INT TO V INT CONVTN OVER RAJ MP NE GUJ KKN SOUTH MADHYA MAHA (.) SCT LOW/MED CLOUDS WITH EMBDD MOD TO INT CONVTN OVER REST GUJ REST MAHA GOA (.)

#### **SOUTH:-**

SCT LOW/MED CLOUDS WITH EMBDD MOD TO INT CONVTN OVER KRNTK E TLNGN S RYLSM N COTL AP N & C KER N TN LKSDP NICOBAR ILS (.) SCT LOW/MED CLOUDS WITH EMBDD WK TO MOD CONVTN OVER W TLNGN N RYLSM S COTL AP REST KER S TN ANDAMAN ILS (.)

#### **ARABIAN SEA:-**

SCT LOW/MED CLOUDS WITH EMBDD INT TO V INT CONVTN OVER EC ARSEA OFF MAHA COAST & SW ARSEA (.) SCT LOW/MED CLOUDS WITH EMBDD MOD TO INT CONVTN OVER NE ARSEA OFF GUJ COAST GULF OF CAMBAY EC ARSEA OFF GOA-KRNTK COASTS SE ARSEA OFF KER COAST & N/HOOD AND COMORIN (.)

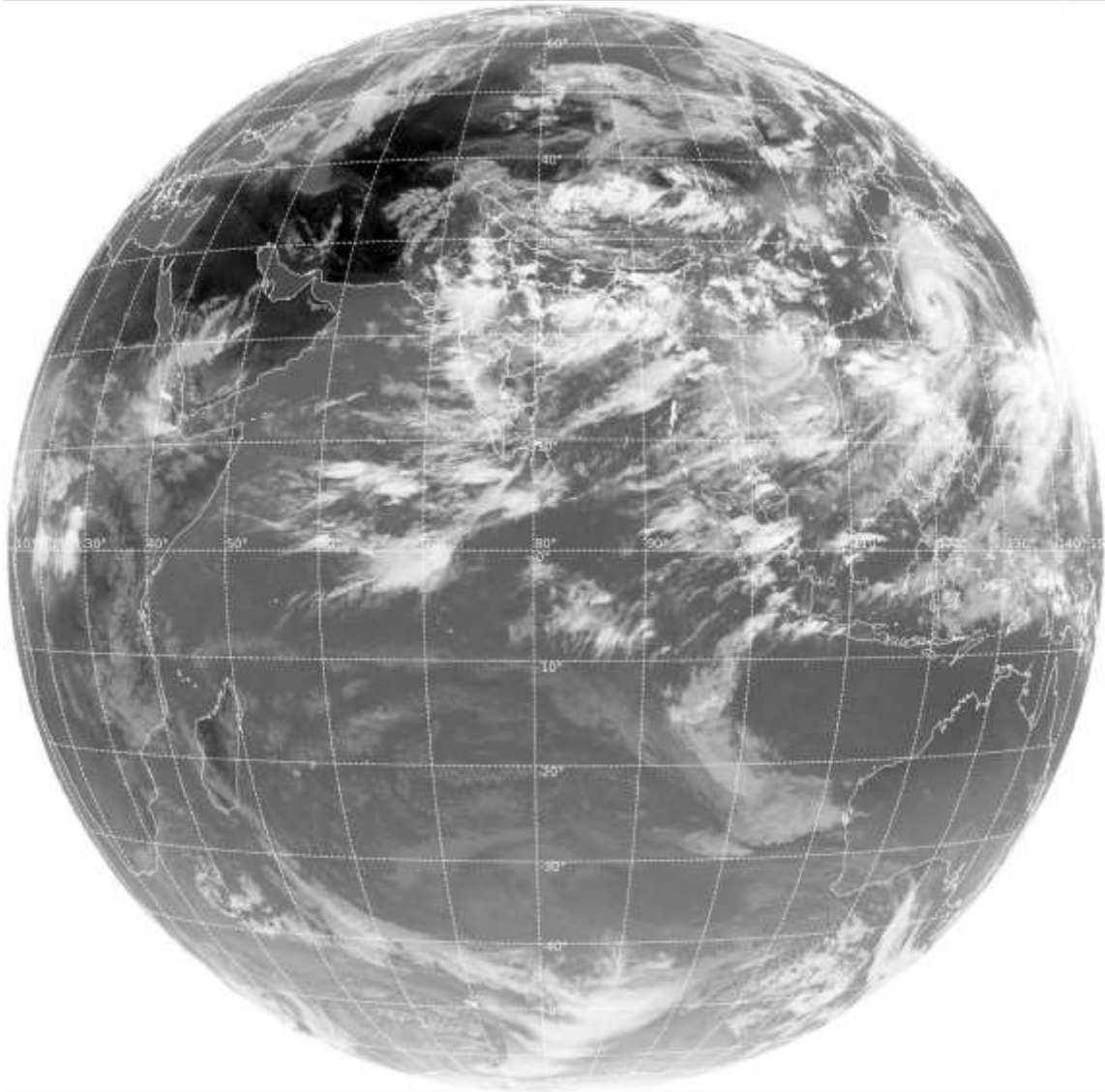
**BAY OF BENGAL & ANDAMAN SEA:-**

**SCT LOW/MED CLOUDS WITH EMBDD INT TO V INT CONVTN OVER NORTH BAY AND MOD TO INT CONVTN OVER CENTRAL & SOUTH BAY ANDAMAN SEA (.)**

**CLOUDS DESCRIPTION OUTSIDE INDIA:-**

SAT : INSAT-3D IMG  
Thermal Infrared1 Count 10.8 um  
LIB FULL DISK

23-07-2021/(0900 to 0926) GMT  
23-07-2021/(1430 to 1456) IST



203

974

IMD, DELHI

**SCT LOW/MED CLOUDS WITH EMBDD MOD TO INT CONVTN OVER SRI LANKA PALK STR GULF OF MANNAR MALDIVES PAK NEPAL BHUTAN TIBET CHINA YELLOW SEA E CHINA SEA TAIWAN MYANMAR THAILAND GULF OF THAILAND CAMBODIA LAOS VIETNAM HAINAN GULF OF TONKIN SUMATRA STR OF MALACCA MALAY PENINSULA BORNEO S CHINA SEA JAVA ILS & SEA CELEBES ILS & SEA PHILIPPINES SULU SEA AND OVER INDIAN OCEAN BET LAT 5.0N TO 4.0S LONG 55.0E TO 80.0E AND BET LAT 9.0S TO 16.0S LONG 80.0E TO 105.0E (.)**

**TOO 23/1540EF=**

**NNNN**

**LEGEND:-**

|               |              |  |
|---------------|--------------|--|
| <b>REGION</b> | <b>NORTH</b> | <b>J&amp;K HP PJB HARY DLH UP UTRKND</b>                         |
|               | <b>EAST</b>  | <b>BHR JHRKND CHTGH ORS WB<br/>SKMNORTH- EAST STATES</b>         |
|               | <b>WEST</b>  | <b>RAJ MP GUJ MAHA GOA</b>                                       |
|               | <b>SOUTH</b> | <b>TLNGN AP KRNTK KER TN LKSDP<br/>ANDAMAN &amp; NICOBAR ILS</b> |

|   |                       |   |
|---|-----------------------|---|
| <b>CLOUD DISTRIBUTION</b>   | <b>ISOL</b>           | <b>ISOLATED (LESS THAN 25%)</b>                             |
|   | <b>SCT</b>            | <b>SCATTERED (25 TO 50%)</b>                                |
|   | <b>BKN</b>            | <b>BROKEN (51 TO 75%)</b>                                   |
|   | <b>SLD</b>            | <b>SOLID (GREATER THAN 75%)</b>                             |
| <b>CLOUDS TOP TEMPERATURE</b>                                       | <b>CTT</b>            | <b>CLOUD TOP TEMPERATURE</b>                                |
| <b>CONVECTION</b>   | <b>WK CONVTN</b>      | <b>WEAK CONVECTION<br/>(CTT GREATER THAN -25°C)</b>         |
|   | <b>MOD CONVTN</b>     | <b>MODERATE CONVECTION<br/>(CTT BETWEEN -25°C TO -40°C)</b> |
|   | <b>INT CONVTN</b>     | <b>INTENSE CONVECTION<br/>(CTT BETWEEN -41°C TO -70°C)</b>  |
|   | <b>V INT CONVTN</b>   | <b>VERY INTENSE CONVECTION<br/>(CTT LESS THAN -70°C)</b>    |
| <b>METEOROLOGICAL SUB-DIVISIONS, STATES &amp; UNION TERRITORIES</b> | <b>ARUPR</b>          | <b>ARUNACHAL PRADESH</b>                                    |
|   | <b>BHR</b>            | <b>BIHAR</b>  |
|   | <b>CHTGH</b>          | <b>CHHATTISGARH</b>   |
|   | <b>COTL AP</b>        | <b>COASTAL ANDHRA PRADESH</b>                               |
|   | <b>COTL KRNTK</b>     | <b>COASTAL KARNATAKA</b>                                    |
|   | <b>COTL ORS</b>       | <b>COASTAL ORISSA</b>                                       |
|   | <b>GUJ</b>            | <b>GUJARAT</b>  |
|   | <b>GWB</b>            | <b>GANGETIC WEST BENGAL</b>                                 |
|   | <b>HARY</b>           | <b>HARYANA</b>  |
|   | <b>DLH</b>            | <b>DELHI</b>  |
|   | <b>HP</b>             | <b>HIMACHAL PRADESH</b>                                     |
|   | <b>J&amp;K</b>        | <b>JAMMU AND KASHMIR</b>                                    |
|   | <b>JHRKND</b>         | <b>JHARKHAND</b>  |
|   | <b>KER</b>            | <b>KERALA</b>   |
|   | <b>KKN</b>            | <b>KONKAN</b>   |
|   | <b>LKSDP</b>          | <b>LAKSHADWEEP</b>  |
|   | <b>M MAHA</b>         | <b>MADHYA MAHARASHTRA</b>                                   |
|   | <b>MAHA</b>           | <b>MAHARASHTRA</b>  |
|   | <b>MANI</b>           | <b>MANIPUR</b>  |
|   | <b>MEGHA</b>          | <b>MEGHALAYA</b>  |
|   | <b>MIZO</b>           | <b>MIZORAM</b>  |
| <b>MP</b>   | <b>MADHYA PRADESH</b> |   |
|   | <b>MRTHWD</b>         | <b>MARATHWADA</b>   |
|   | <b>NAGA</b>           | <b>NAGALAND</b>   |
|   | <b>N COTL AP</b>      | <b>NORTH COASTAL ANDHRA PRADESH</b>                         |

|                      |                        |                                  |
|----------------------|------------------------|----------------------------------|
|                      | <b>NIK</b>             | <b>NORTH INTERIOR KARNATAKA</b>  |
|                      | <b>ORS</b>             | <b>ORISSA</b>                    |
|                      | <b>PJB</b>             | <b>PUNJAB</b>                    |
|                      | <b>RAJ</b>             | <b>RAJASTHAN</b>                 |
|                      | <b>RYLSM</b>           | <b>RAYALASEEMA</b>               |
|                      | <b>SAU &amp; KUTCH</b> | <b>SAURASHTRA &amp; KUTCH</b>    |
|                      | <b>SHWB</b>            | <b>SUB-HIMALAYAN WEST BENGAL</b> |
|                      | <b>SIK</b>             | <b>SOUTH INTERIOR KARNATAKA</b>  |
|                      | <b>SKM</b>             | <b>SIKKIM</b>                    |
|                      | <b>TLNGN</b>           | <b>TELANGANA</b>                 |
|                      | <b>TN</b>              | <b>TAMIL NADU</b>                |
|                      | <b>TRP</b>             | <b>TRIPURA</b>                   |
|                      | <b>UP</b>              | <b>UTTAR PRADESH</b>             |
|                      | <b>UTRKN</b>           | <b>UTTARAKHAND</b>               |
|                      | <b>VID</b>             | <b>VIDHARBHA</b>                 |
|                      | <b>SHWB</b>            | <b>SUB HIMALAYAN WEST BENGAL</b> |
|                      | <b>GWB</b>             | <b>GANGETIC WEST BENGAL</b>      |
|                      | <b>ARSEA</b>           | <b>ARABIAN SEA</b>               |
|                      | <b>ILS</b>             | <b>ISLANDS</b>                   |
| <b>MISCELLANEOUS</b> | <b>ASSW</b>            | <b>IN ASSOCIATION WITH</b>       |
|                      | <b>ASSTD</b>           | <b>ASSOCIATED</b>                |
|                      | <b>LLC</b>             | <b>LOW LEVEL CIRCULATION</b>     |
|                      | <b>EMBDD</b>           | <b>EMBEDDED</b>                  |
|                      | <b>N/HOOD</b>          | <b>NEIGHBOURHOOD</b>             |
|                      | <b>EXT</b>             | <b>EXTREME</b>                   |