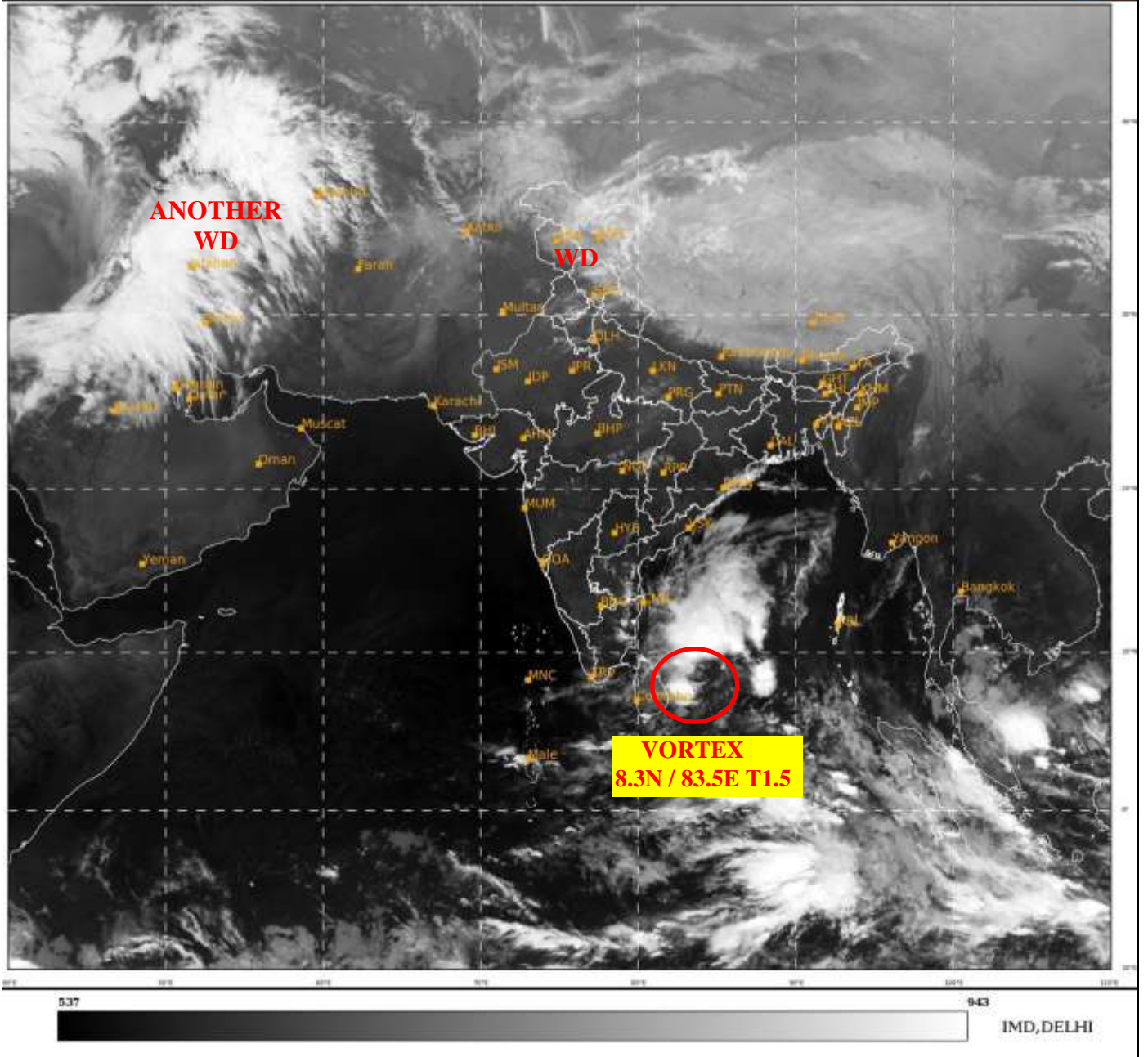




**SATELLITE BULLETIN BASED ON SATELLITE
IMAGERIES AND PRODUCTS**
03.03.2022 TIME 2100 UTC

SAT : INSAT-3D IMG
IMG_TIR1 10.8 um
LIC Mercator

03-03-2022/(2100 to 2126) GMT
04-03-2022/(0230 to 0256) IST



TCIN50 DEMS 032100

SATELLITE BULLETIN BASED ON INSAT-3D PIC OF 032100 UTC (.)

REGION COVERED BETWEEN LAT 50.0°N TO 30.0°S AND LONG 40.0°E TO 125.0°E (.)

SALIENT FEATURES:-

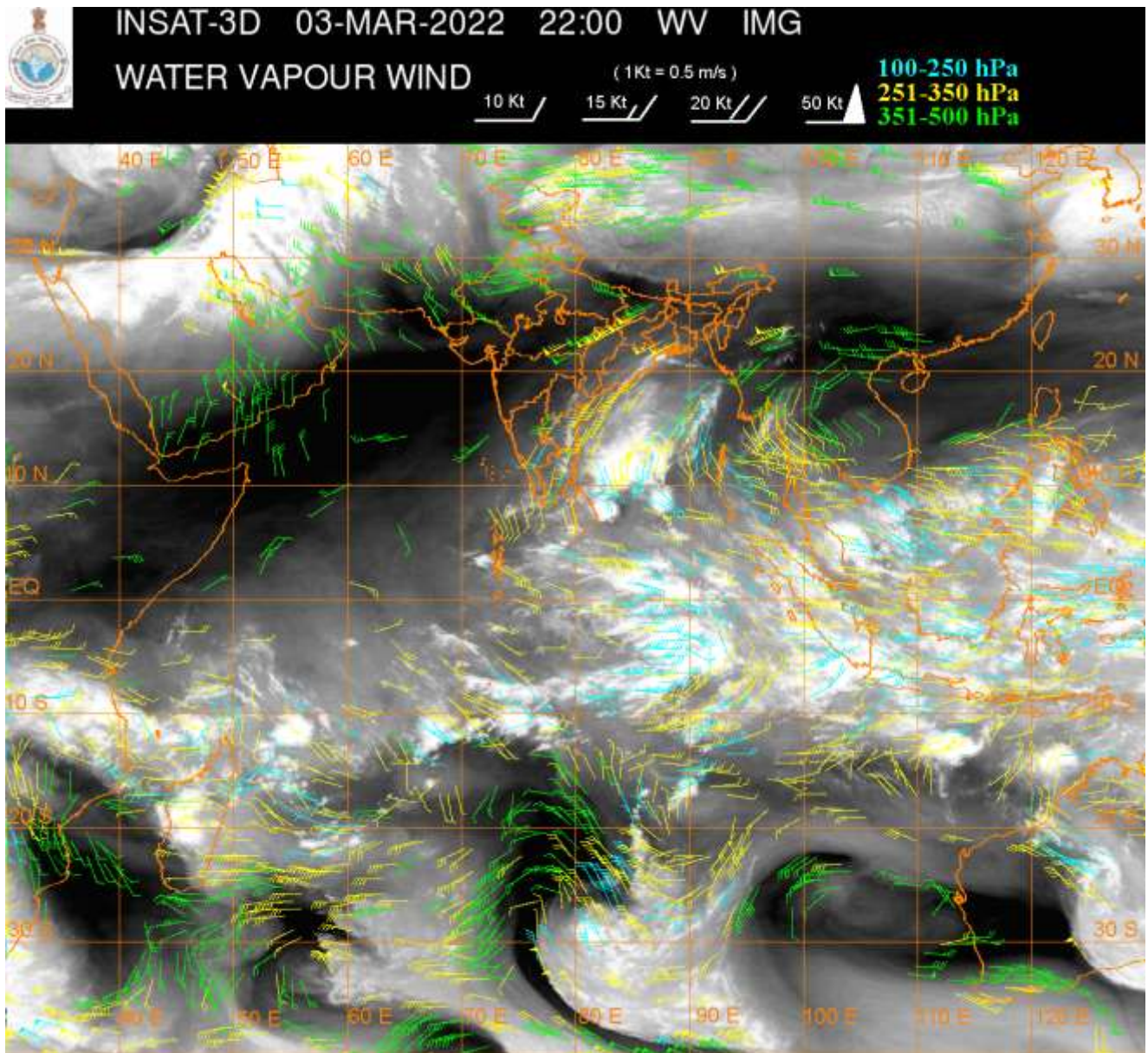
VORTEX (DEPRESSION) OVER SOUTH-WEST BAY & N/HOOD:-

VORTEX (**DEPRESSION**) OVER SOUTH-WEST BAY & N/HOOD CENTERED WITHIN HALF A DEGREE OF **8.3N / 83.5E** (.) INTENSITY **T1.5/1.5** (.) GCOM-W1 AMSR2 37 GHZ MICROWAVE IMAGERY AT 2004 UTC EXPOSES LOW LEVEL CIRCULATION CENTRE NEAR 8.2N / 83.4E WITH INTENSE CONVECTION LIES IN THE NORTH-EAST PERIPHERY OF THE SYSTEM CENTRE (.) ASSTD BKN LOW/MED CLOUDS WITH EMBDD INTENSE TO VERY INTENSE CONV'TN OVER AREA BET LAT 6.5N TO 14.5N LONG 82.0E TO 88.5E & SRI LANKA (.) MINIMUM CTT MINUS **90** DEGREE C (.)

WESTERN DISTURBANCE (WD):-

SCT MULTILAYERED CLOUDS OVER LADAKH J&K HP PJB HARY DLH UTRKND TIBET ADJ CHINA IN ASSW **WD** OVER THE AREA (.)

**SCT TO BKN MULTILAYERED CLOUDS OVER CASPIAN SEA IRAN AFGAN AND N/HOOD IN ASSW
ANOTHER WD OVER THE AREA (.)**



CLOUDS DESCRIPTION WITHIN INDIA:-

NORTH:-

**SCT LOW/MED CLOUDS WITH EMBDD MOD TO INT CONVTN OVER LADAKH NE J&K N HP (.)
SCT LOW/MED CLOUDS WITH EMBDD WK TO MOD CONVTN OVER REST J&K S HP N & SW
UTRKND PJB HARY AND ISOL WK CONVTN OVER DLH UP (.) ISOL LOW/MED CLOUDS OVER SE
UTRKND (.)**

EAST:-

**SCT LOW/MED CLOUDS WITH EMBDD MOD TO INT CONVTN OVER E ORS (.) SCT LOW/MED
CLOUDS WITH EMBDD WK CONVTN OVER C CHTGH SKM ARUPR E ASSAM (.) ISOL TO SCT
LOW/MED CLOUDS OVER REST CHTGH W ORS COTL GWB EXT N SHWB REST ASSAM MEGHA
NAGA N MANI (.)**

WEST:-

**SCT LOW/MED CLOUDS WITH EMBDD WK TO MOD CONVTN OVER NW RAJ AND ISOL WK
CONVTN OVER SE MP VID (.) SCT LOW/MED CLOUDS OVER EXT NE RAJ NE MP MRTHWD
MADHYA MAHA (.)**

SOUTH:-

**SCT LOW/MED CLOUDS WITH EMBDD MOD TO INT CONVTN OVER S COTL AP NE TN (.) SCT
LOW/MED CLOUDS WITH EMBDD WK TO MOD CONVTN OVER EXT SE SIK SE TLNGN RYLSM
N COTL AP S KER S TN NICOBAR ILS (.) SCT LOW/MED CLOUDS OVER N KER REST TN LKSDP
ANDAMAN ILS (.)**

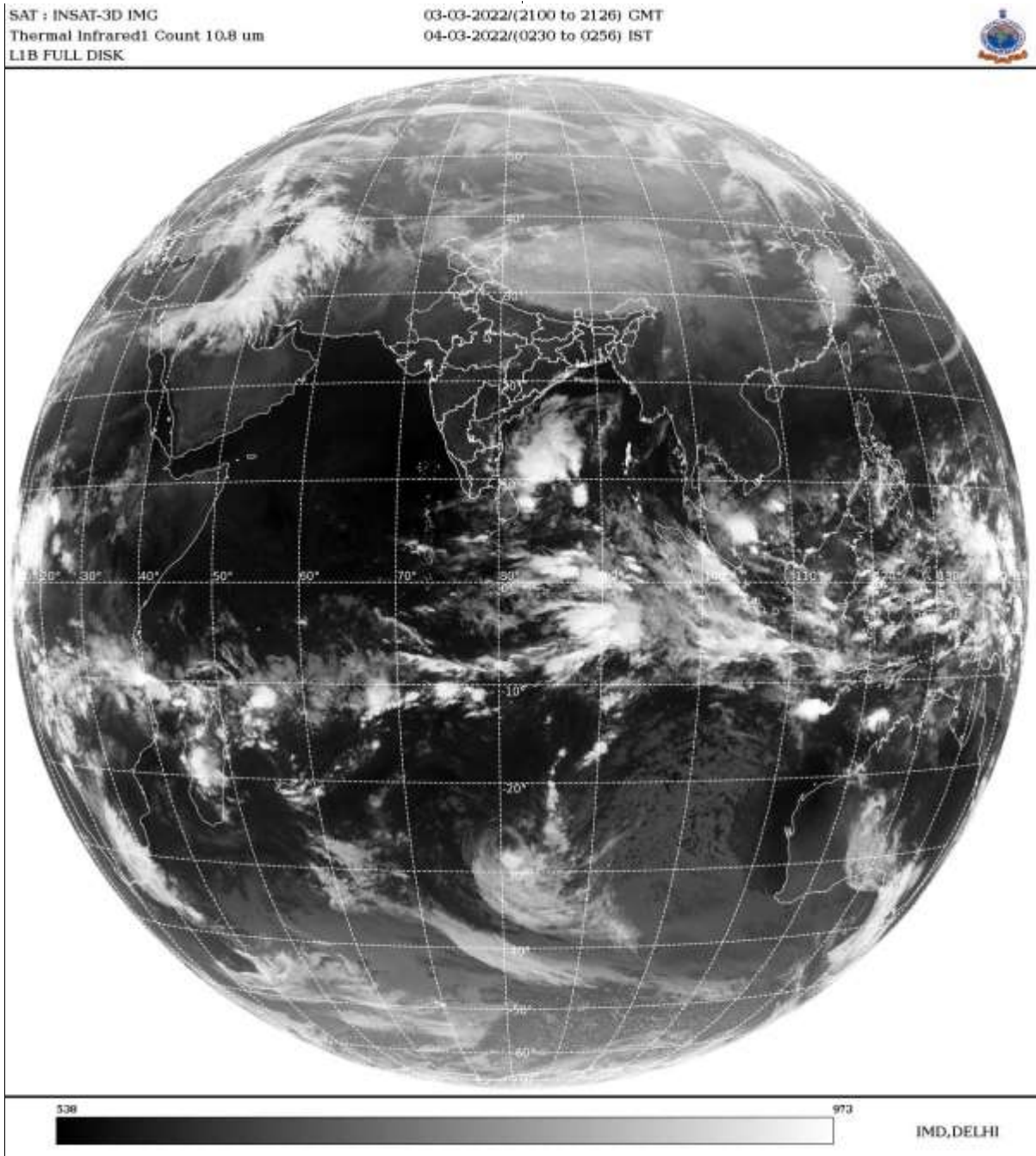
ARABIAN SEA:-

**SCT LOW/MED CLOUDS WITH EMBDD WK TO MOD CONVTN OVER SE ARSEA AND COMORIN
AREA (.)**

BAY OF BENGAL & ANDAMAN SEA:-

BKN LOW/MED CLOUDS WITH EMBDD INT TO V INT CONVTN OVER SW ADJ SE BAY (.) SCT LOW/MED CLOUDS WITH EMBDD MOD TO INT CONVTN OVER NW BAY CENTRAL BAY REST SOUTH BAY AND ISOL WK TO MOD CONVTN OVER NE BAY ANDAMAN SEA (.)

CLOUDS DESCRIPTION OUTSIDE INDIA:



SCT LOW/MED CLOUDS WITH EMBDD MOD TO INT CONVTN OVER SRI LANKA PALK STR GULF OF MANNAR MALDIVES N PAK TIBET CHINA YELLOW SEA MYANMAR W THAILAND GULF OF THAILAND SUMATRA STR OF MALACCA MALAYSIA BORNEO S CHINA SEA JAVA ILS & SEA CELEBES ILS & SEA PHILIPPINES SULU SEA MADAGASCAR N MOZAMBIQUE CHANNEL AND OVER INDIAN OCEAN BET EQ TO LAT 28.0S LONG 50.0E TO 70.0E AND BET LAT 5.0N TO 30.0S LONG 70.0E TO 114.0E (.)

TOO 04/0450 HRS IST=

NNNN

LEGEND:-

REGION	NORTH	J&K HP PJB HARY DLH UP UTRKND
	EAST	BHR JHRKND CHTGH OR WB SKM NORTH- EAST STATES
	WEST	RAJ MP GUJ MAHA GOA
	SOUTH	TLNGN AP KRNTK KER TN LKSDP ANDAMAN & NICOBAR ILS

CLOUD DISTRIBUTION	ISOL	ISOLATED (LESS THAN 25%)
	SCT	SCATTERED (25 TO 50%)
	BKN	BROKEN (51 TO 75%)
	SLD	SOLID (GREATER THAN 75%)
CLOUDS TOP TEMPERATURE	CTT	CLOUD TOP TEMPERATURE
CONVECTION	WK CONVTN	WEAK CONVECTION (CTT GREATER THAN -25°C)
	MOD CONVTN	MODERATE CONVECTION (CTT BETWEEN -25°C TO -40°C)
	INT CONVTN	INTENSE CONVECTION (CTT BETWEEN -41°C TO -70°C)
	V INT CONVTN	VERY INTENSE CONVECTION (CTT LESS THAN -70°C)
METEOROLOGICAL SUB-DIVISIONS, STATES & UNION TERRITORIES	ARUPR	ARUNACHAL PRADESH
	BHR	BIHAR
	CHTGH	CHHATTISGARH
	COTL AP	COASTAL ANDHRA PRADESH
	COTL KRNTK	COASTAL KARNATAKA
	COTL ORS	COASTAL ORISSA
	GUJ	GUJARAT
	GWB	GANGETIC WEST BENGAL
	HARY	HARYANA
	DLH	DELHI
	HP	HIMACHAL PRADESH
	J&K	JAMMU AND KASHMIR
	JHRKND	JHARKHAND
	KER	KERALA
	KKN	KONKAN
	LKSDP	LAKSHADWEEP
	M MAHA	MADHYA MAHARASHTRA
	MAHA	MAHARASHTRA
	MANI	MANIPUR
	MEGHA	MEGHALAYA
	MIZO	MIZORAM
	MP	MADHYA PRADESH
		MRTHWD
	NAGA	NAGALAND

	N COTL AP	NORTH COASTAL ANDHRA PRADESH
	NIK	NORTH INTERIOR KARNATAKA
	ORS	ORISSA
	PJB	PUNJAB
	RAJ	RAJASTHAN
	RYLSM	RAYALASEEMA
	SAU & KUTCH	SAURASHTRA & KUTCH
	SHWB	SUB-HIMALAYAN WEST BENGAL
	SIK	SOUTH INTERIOR KARNATAKA
	SKM	SIKKIM
	TLNGN	TELANGANA
	TN	TAMIL NADU
	TRP	TRIPURA
	UP	UTTAR PRADESH
	UTRKND	UTTARAKHAND
	VID	VIDHARBHA
	SHWB	SUB HIMALAYAN WEST BENGAL
	GWB	GANGETIC WEST BENGAL
	ARSEA	ARABIAN SEA
	ILS	ISLANDS
MISCELLANEOUS	ASSW	IN ASSOCIATION WITH
	ASSTD	ASSOCIATED
	LLC	LOW LEVEL CIRCULATION
	EMBDD	EMBEDDED
	N/HOOD	NEIGHBOURHOOD
	EXT	EXTREME