

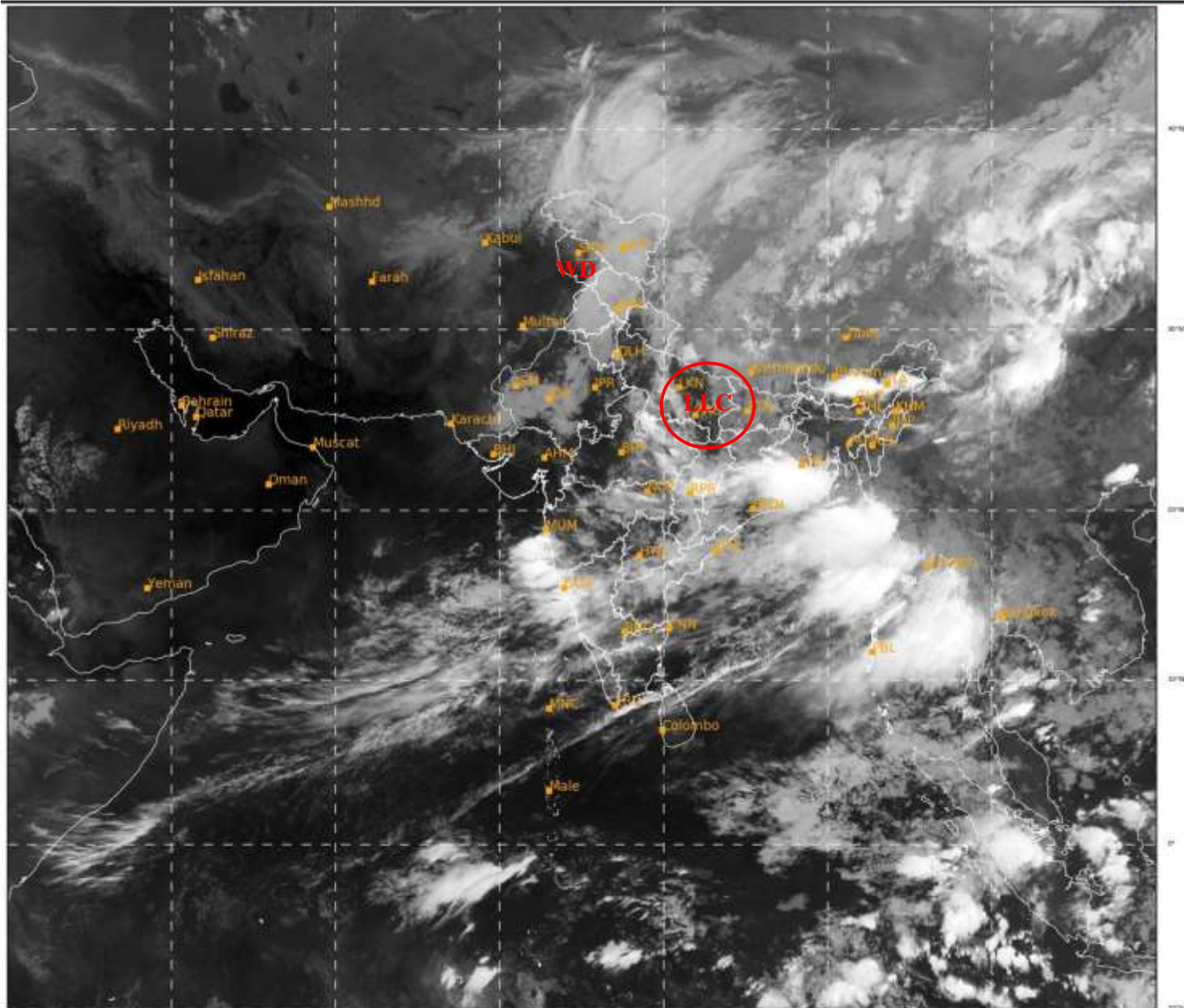


**SATELLITE BULLETIN BASED ON SATELLITE IMAGERIES  
AND PRODUCTS**

**15.06.2021 TIME 2100 UTC**

SAT : INSAT-3DR IMG  
IMG\_TIR1 10.8 um  
LIC Mercator

15-06-2021/(2045 to 2112) GMT  
16-06-2021/(0215 to 0242) IST



476

940

IMD, DELHI

TCIN50 DEMS 152100

SATELLITE BULLETIN BASED ON INSAT-3DR PIC OF 152045 UTC (.)

REGION COVERED BETWEEN LAT 50.0°N TO 30.0°S AND LONG 40.0°E TO 125.0°E (.)

**SALIENT FEATURES:-**

**LLC OVER E UP ADJ BIHAR & N/HOOD:-**

SCT LOW/MED CLOUDS WITH EMBDD MOD TO INT CONVTN OVER E UP BHR JHRKND N  
CHTGH E MP AND N/HOOD IN ASSW LOW LEVEL CIRCULATION (LLC) OVER THE AREA (.)

**WESTERN DISTURBANCE (WD):-**

SCT MULTILAYERED CLOUDS OVER PAK LADAKH J&K HP PJB HARY RAJ UTRKND UP NEPAL  
TIBET ADJ CHINA AND N/HOOD IN ASSW WD OVER THE AREA (.)



INSAT-3DR 15-JUN-2021 20:45 WV IMG

WATER VAPOUR WIND

( 1Kt = 0.5 m/s )

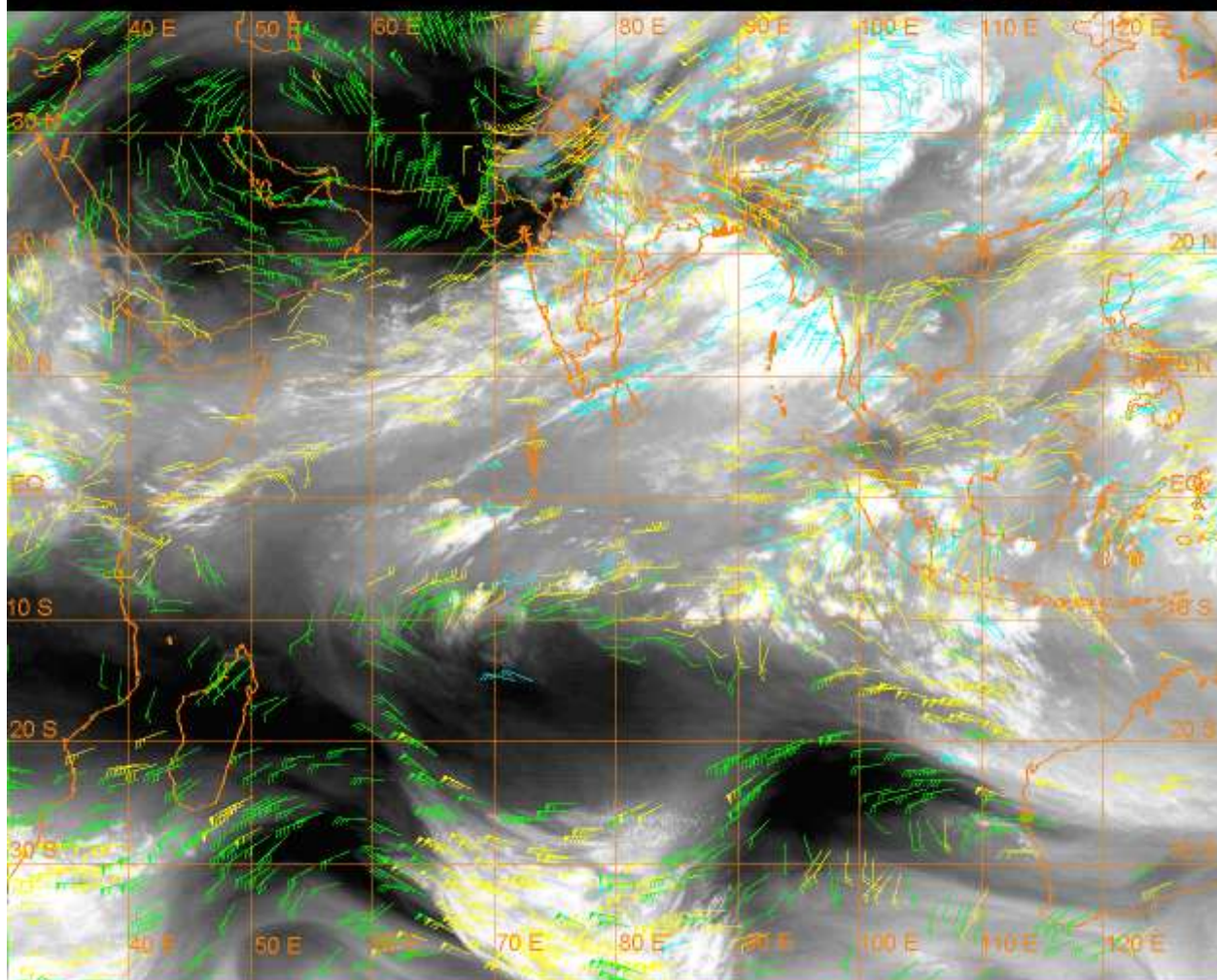
10 Kt /

15 Kt //

20 Kt //

50 Kt ▲

100-250 hPa  
251-350 hPa  
351-500 hPa



### CLOUDS DESCRIPTION WITHIN INDIA:-

#### NORTH:-

SCT LOW/MED CLOUDS WITH EMBDD MOD TO INT CONVTN OVER NW LADAKH C UP (.) SCT LOW/MED CLOUDS WITH EMBDD WK TO MOD CONVTN OVER REST LADAKH J&K HP UTRKND PJB HARY DLH REST UP (.)

#### EAST:-

SCT LOW/MED CLOUDS WITH EMBDD INT TO V INT CONVTN OVER SE JHRKND N CHTGH NE ORS S GWB N ASSAM W ARUPR & SW BD (.) SCT LOW/MED CLOUDS WITH EMBDD MOD TO INT CONVTN OVER SC BHR REST JHRKND NW ORS REST ASSAM E ARUPR (.) SCT LOW/MED CLOUDS WITH EMBDD WK TO MOD CONVTN OVER REST BHR S CHTGH REST ORS N GWB SHWB SKM REST NE STATES (.)

#### WEST:-

SCT LOW/MED CLOUDS WITH EMBDD INT TO V INT CONVTN OVER KKN GOA (.) SCT LOW/MED CLOUDS WITH EMBDD MOD TO INT CONVTN OVER E MP VID NORTH MADHYA MAHA AND WK TO MOD CONVTN OVER RAJ W MP MRTWD SOUTH MADHYA MAHA (.) SCT LOW/MED CLOUDS OVER GUJ SAURASHTRA KUTCH (.)

#### SOUTH:-

SCT LOW/MED CLOUDS WITH EMBDD INT TO V INT CONVTN OVER N COTL KRNTK (.) SCT LOW/MED CLOUDS WITH EMBDD MOD TO INT CONVTN OVER REST KRNTK SW TLNGN C COTL AP N KER NC & S COTL TN ANDAMAN ILS (.) SCT LOW/MED CLOUDS WITH EMBDD WK TO MOD CONVTN OVER REST TLNGN RYLSM REST COTL AP S KER REST TN LKSDP NICOBAR ILS (.)

#### ARABIAN SEA:-

SCT LOW/MED CLOUDS WITH EMBDD INT TO V INT CONVTN OVER EC ARSEA OFF MAHA-GOA-KRNTK COASTS (.) SCT LOW/MED CLOUDS WITH EMBDD MOD TO INT CONVTN OVER SE ARSEA COMORIN AND WK TO MOD CONVTN OVER REST CENTRAL & SW ARSEA (.)

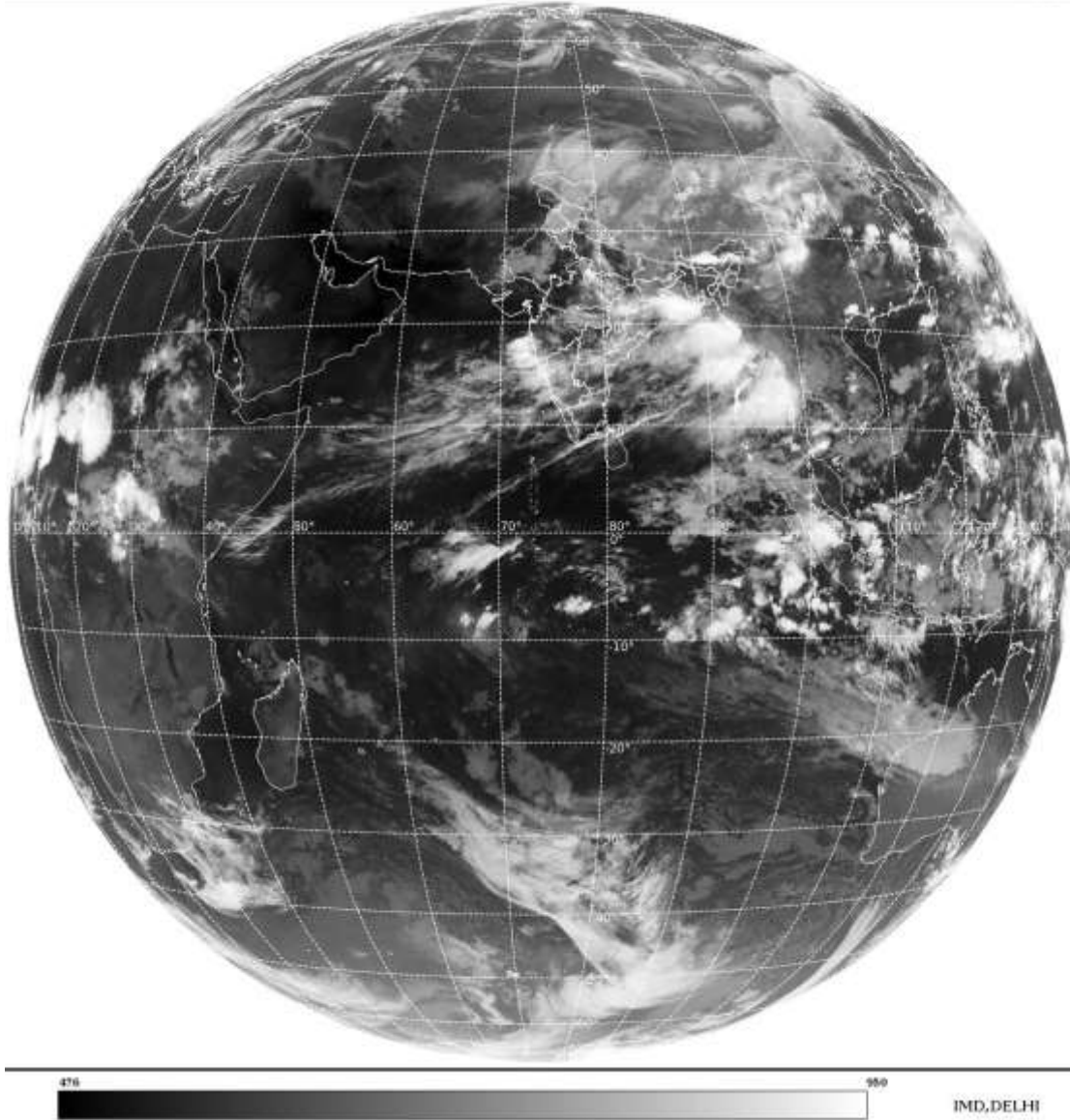
**BAY OF BENGAL & ANDAMAN SEA:-**

**SCT TO BKN LOW/MED CLOUDS WITH EMBDD INT TO V INT CONVTN OVER N & EC BAY AND N ANDAMAN SEA (.) SCT LOW/MED CLOUDS WITH EMBDD MOD TO INT CONVTN OVER REST BAY & S ANDAMAN SEA (.)**

**CLOUDS DESCRIPTION OUTSIDE INDIA:-**

SAT : INSAT-3DR IMG  
Thermal Infrared1 Count 10.8 um  
L1B FULL DISK

15-06-2021/(2045 to 2112) GMT  
16-06-2021/(0215 to 0242) IST



**SCT LOW/MED CLOUDS WITH EMBDD MOD TO INT CONVTN OVER N SRI LANKA GULF OF MANNAR PALK STR NEPAL BHUTAN TIBET CHINA YELLOW SEA E CHINA SEA TAIWAN MYANMAR THAILAND GULF OF THAILAND CAMBODIA LAOS VIETNAM SUMATRA STR OF MALACCA MALAY PENINSULA BORNEO S CHINA SEA JAVA ILS & SEA CELEBES SEA PHILIPPINES SULU SEA AND OVER INDIAN OCEAN BET LAT 5.0N TO 10.0S LONG 64.0E TO 110.0E (.)**

**TOO 16/0350EF=**

**NNNN**

**LEGEND:-**

|               |              |  |
|---------------|--------------|--|
| <b>REGION</b> | <b>NORTH</b> | <b>J&amp;K HP PJB HARY DLH UP UTRKND</b>                     |
|               | <b>EAST</b>  | <b>BHR JHRKND CHTGH ORS WB SKMNORTH-EAST STATES</b>          |
|               | <b>WEST</b>  | <b>RAJ MP GUJ MAHA GOA</b>                                   |
|               | <b>SOUTH</b> | <b>TLNGN AP KRNTK KER TN LKSDP ANDAMAN &amp; NICOBAR ILS</b> |

|   |                       |   |
|---|-----------------------|---|
| <b>CLOUD DISTRIBUTION</b>   | <b>ISOL</b>           | <b>ISOLATED (LESS THAN 25%)</b>                             |
|   | <b>SCT</b>            | <b>SCATTERED (25 TO 50%)</b>                                |
|   | <b>BKN</b>            | <b>BROKEN (51 TO 75%)</b>                                   |
|   | <b>SLD</b>            | <b>SOLID (GREATER THAN 75%)</b>                             |
| <b>CLOUDS TOP TEMPERATURE</b>                                       | <b>CTT</b>            | <b>CLOUD TOP TEMPERATURE</b>                                |
| <b>CONVECTION</b>   | <b>WK CONVTN</b>      | <b>WEAK CONVECTION<br/>(CTT GREATER THAN -25°C)</b>         |
|   | <b>MOD CONVTN</b>     | <b>MODERATE CONVECTION<br/>(CTT BETWEEN -25°C TO -40°C)</b> |
|   | <b>INT CONVTN</b>     | <b>INTENSE CONVECTION<br/>(CTT BETWEEN -41°C TO -70°C)</b>  |
|   | <b>V INT CONVTN</b>   | <b>VERY INTENSE CONVECTION<br/>(CTT LESS THAN -70°C)</b>    |
| <b>METEOROLOGICAL SUB-DIVISIONS, STATES &amp; UNION TERRITORIES</b> | <b>ARUPR</b>          | <b>ARUNACHAL PRADESH</b>                                    |
|   | <b>BHR</b>            | <b>BIHAR</b>  |
|   | <b>CHTGH</b>          | <b>CHHATTISGARH</b>   |
|   | <b>COTL AP</b>        | <b>COASTAL ANDHRA PRADESH</b>                               |
|   | <b>COTL KRNTK</b>     | <b>COASTAL KARNATAKA</b>                                    |
|   | <b>COTL ORS</b>       | <b>COASTAL ORISSA</b>                                       |
|   | <b>GUJ</b>            | <b>GUJARAT</b>  |
|   | <b>GWB</b>            | <b>GANGETIC WEST BENGAL</b>                                 |
|   | <b>HARY</b>           | <b>HARYANA</b>  |
|   | <b>DLH</b>            | <b>DELHI</b>  |
|   | <b>HP</b>             | <b>HIMACHAL PRADESH</b>                                     |
|   | <b>J&amp;K</b>        | <b>JAMMU AND KASHMIR</b>                                    |
|   | <b>JHRKND</b>         | <b>JHARKHAND</b>  |
|   | <b>KER</b>            | <b>KERALA</b>   |
|   | <b>KKN</b>            | <b>KONKAN</b>   |
|   | <b>LKSDP</b>          | <b>LAKSHADWEEP</b>  |
|   | <b>M MAHA</b>         | <b>MADHYA MAHARASHTRA</b>                                   |
|   | <b>MAHA</b>           | <b>MAHARASHTRA</b>  |
|   | <b>MANI</b>           | <b>MANIPUR</b>  |
|   | <b>MEGHA</b>          | <b>MEGHALAYA</b>  |
| <b>MIZO</b>   | <b>MIZORAM</b>        |   |
| <b>MP</b>   | <b>MADHYA PRADESH</b> |   |

|                      |                        |                                     |
|----------------------|------------------------|-------------------------------------|
|                      | <b>MRTHWD</b>          | <b>MARATHWADA</b>                   |
|                      | <b>NAGA</b>            | <b>NAGALAND</b>                     |
|                      | <b>N COTL AP</b>       | <b>NORTH COASTAL ANDHRA PRADESH</b> |
|                      | <b>NIK</b>             | <b>NORTH INTERIOR KARNATAKA</b>     |
|                      | <b>ORS</b>             | <b>ORISSA</b>                       |
|                      | <b>PJB</b>             | <b>PUNJAB</b>                       |
|                      | <b>RAJ</b>             | <b>RAJASTHAN</b>                    |
|                      | <b>RYLSM</b>           | <b>RAYALASEEMA</b>                  |
|                      | <b>SAU &amp; KUTCH</b> | <b>SAURASHTRA &amp; KUTCH</b>       |
|                      | <b>SHWB</b>            | <b>SUB-HIMALAYAN WEST BENGAL</b>    |
|                      | <b>SIK</b>             | <b>SOUTH INTERIOR KARNATAKA</b>     |
|                      | <b>SKM</b>             | <b>SIKKIM</b>                       |
|                      | <b>TLNGN</b>           | <b>TELANGANA</b>                    |
|                      | <b>TN</b>              | <b>TAMIL NADU</b>                   |
|                      | <b>TRP</b>             | <b>TRIPURA</b>                      |
|                      | <b>UP</b>              | <b>UTTAR PRADESH</b>                |
|                      | <b>UTRKN D</b>         | <b>UTTARAKHAND</b>                  |
|                      | <b>VID</b>             | <b>VIDHARBHA</b>                    |
|                      | <b>SHWB</b>            | <b>SUB HIMALAYAN WEST BENGAL</b>    |
|                      | <b>GWB</b>             | <b>GANGETIC WEST BENGAL</b>         |
|                      | <b>ARSEA</b>           | <b>ARABIAN SEA</b>                  |
|                      | <b>ILS</b>             | <b>ISLANDS</b>                      |
| <b>MISCELLANEOUS</b> | <b>ASSW</b>            | <b>IN ASSOCIATION WITH</b>          |
|                      | <b>ASSTD</b>           | <b>ASSOCIATED</b>                   |
|                      | <b>LLC</b>             | <b>LOW LEVEL CIRCULATION</b>        |
|                      | <b>EMBDD</b>           | <b>EMBEDDED</b>                     |
|                      | <b>N/HOOD</b>          | <b>NEIGHBOURHOOD</b>                |
|                      | <b>EXT</b>             | <b>EXTREME</b>                      |