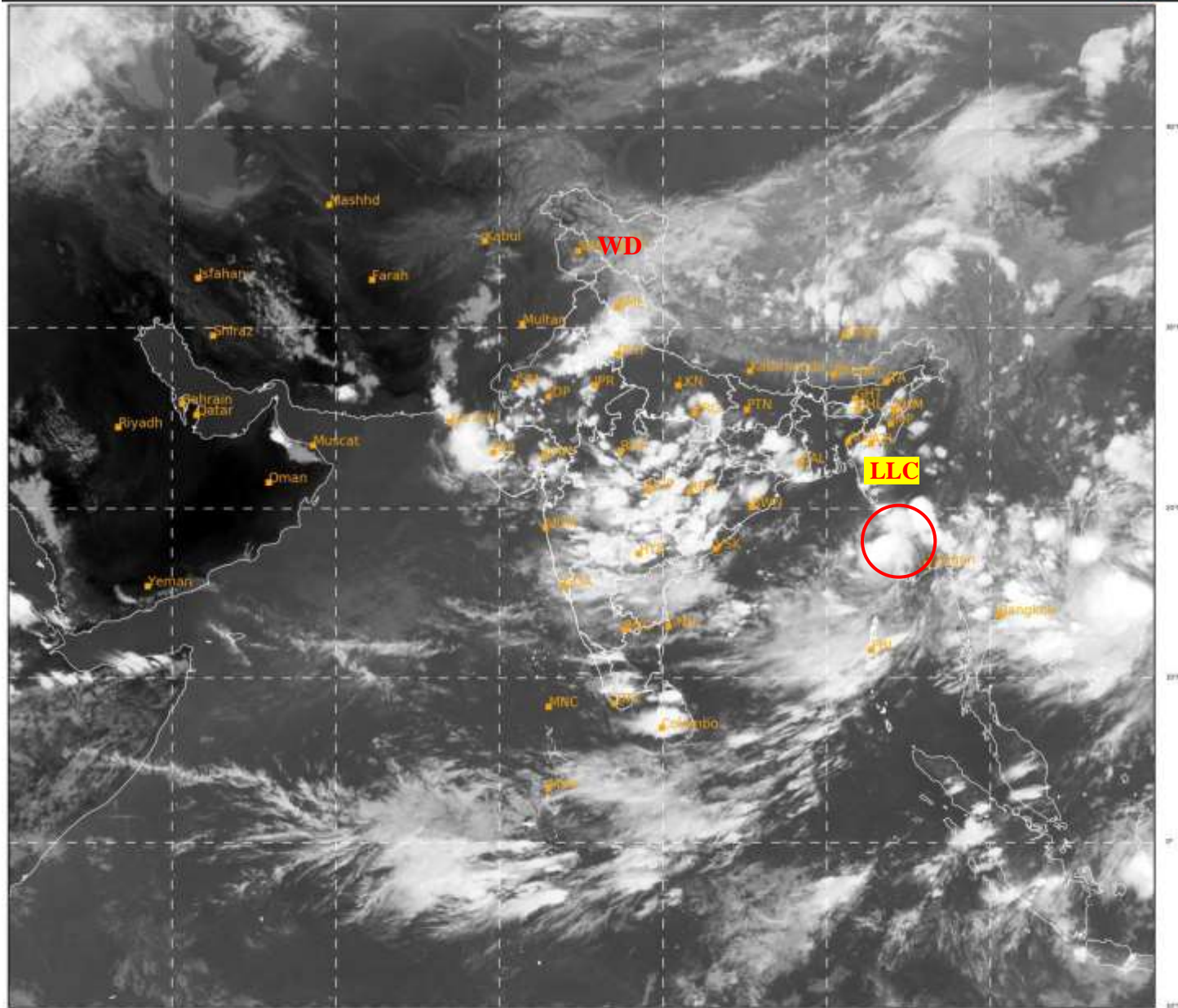




**SATELLITE BULLETIN BASED ON SATELLITE**  
**IMAGERIES AND PRODUCTS**  
**23.09.2021 TIME 1200 UTC**

SAT : INSAT-3D IMG  
IMG\_TIR1 10.8 um  
LIC Mercator

23-09-2021/(1200 to 1226) GMT  
23-09-2021/(1730 to 1756) IST



302

950

IMD, DELHI

TCIN50 DEMS 231200

SATELLITE BULLETIN BASED ON INSAT-3D PIC OF 231200 UTC (.)

REGION COVERED BETWEEN LAT 50.0°N TO 30.0°S AND LONG 40.0°E TO 125.0°E (.)

**SALIENT FEATURES:-**

**LLC OVER EXTREME SOUTH MYANMAR ADJ EC BAY & N/HOOD:-**

BKN LOW/MED CLOUDS WITH EMBDD INT TO V INT CONVTN OVER EXTREME SOUTH MYANMAR ADJ EC BAY AND MOD TO INT CONVTN OVER GULF OF MARTABAN & N/HOOD IN ASSW LOW LEVEL CIRCULATION (LLC) OVER THE AREA (.) MINIMUM CTT MINUS 93 DEG CEL (.)

**WESTERN DISTURBANCE (WD):-**

SCT MULTILAYERED CLOUDS OVER N PAK LADAKH J&K HP PJB HARY UTRKND N TIBET ADJ CHINA IN ASSW WD OVER THE AREA (.)



INSAT-3D 23-SEP-2021 12:00 WV IMG

WATER VAPOUR WIND

(1Kt = 0.5 m/s)

10 Kt

15 Kt

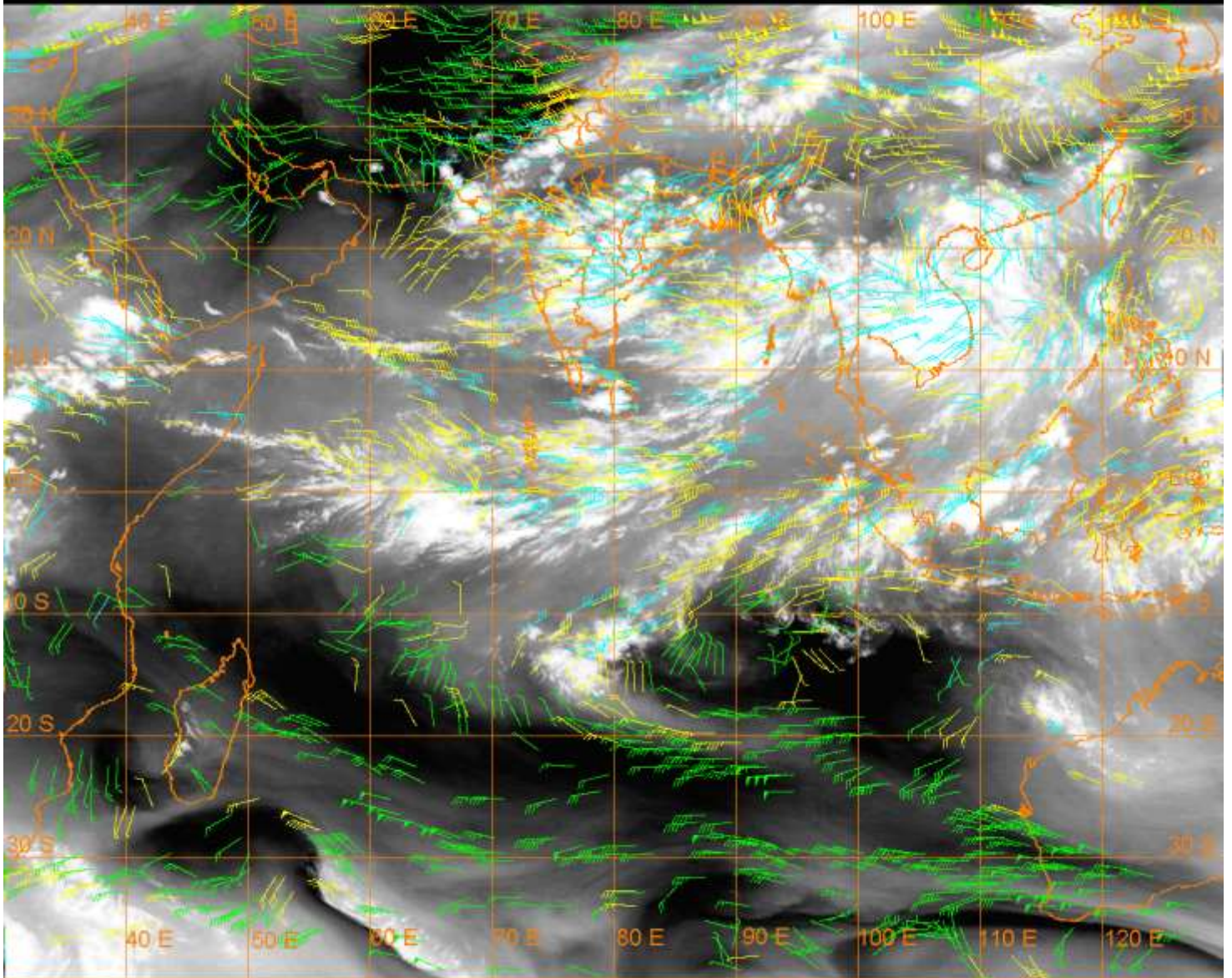
20 Kt

50 Kt

100-250 hPa

251-350 hPa

351-500 hPa



### CLOUDS DESCRIPTION WITHIN INDIA:-

#### NORTH:-

SCT LOW/MED CLOUDS WITH EMBDD INT TO V INT CONVTN OVER EC HARY EXT NW & SE UP N DLH (.) SCT LOW/MED CLOUDS WITH EMBDD MOD TO INT CONVTN OVER EXT E PJB REST HARY EXT S HP SW UTRKND S DLH AND WK TO MOD CONVTN OVER LADAKH J&K REST HP REST UTRKND REST E PJB (.) SCT LOW/MED CLOUDS OVER REST UP (.)

#### EAST:-

SCT TO BKN LOW/MED CLOUDS WITH EMBDD INT TO V INT CONVTN OVER CHTGH S ORS NE JHRKND EXT SW BHR EXT W GWB N MIZO AND MOD TO INT CONVTN OVER S JHRKND SW BHR N ORS REST GWB EXT N SHWB C MEGHA EXT NE ASSAM NAGA SW MANI S MIZO E TRP (.) SCT LOW/MED CLOUDS WITH EMBDD ISOL WK TO MOD CONVTN OVER NW JHRKND SKM ARUPR N MANI (.) SCT LOW/MED CLOUDS OVER N BHR REST ASSAM (.)

#### WEST:-

SCT LOW/MED CLOUDS WITH EMBDD INT TO V INT CONVTN OVER NC RAJ EXT NW GUJ GULF OF KUTCH C & SE MP VID S MRTHWD EXT PARTS OF M MAHA AND MOD TO INT CONVTN OVER C RAJ EC GUJ NE & SW MP S VID N MRTHWD NORTH M MAHA (.) SCT LOW/MED CLOUDS WITH EMBDD ISOL WK TO MOD CONVTN OVER S RAJ SW GUJ REST MAHA & GOA (.) SCT LOW/MED CLOUDS OVER REST RAJ NW MP (.)

#### SOUTH:-

SCT TO BKN LOW/MED CLOUDS WITH EMBDD INT TO V INT CONVTN OVER E NIK TLNGN NCOTL AP WC TN (.) SCT LOW/MED CLOUDS WITH EMBDD MOD TO INT CONVTN OVER N RYLSM WEST NIK S COTL AP KER & S ANDAMAN ILS AND ISOL WK TO MOD CONVTN OVER NORTH SIK NE TN N ANDAMAN ILS (.) SCT LOW/MED CLOUDS OVER REST TN LKSDP & NICOBAR ILS (.)

ARABIAN SEA:-

SCT LOW/MED CLOUDS WITH EMBDD ISOL INT TO V INT CONVTN OVER GULF OF KUTCH AND MOD TO INT CONVTN OVER EC ARSEA OFF MAHA-GOA COASTS & SC ARSEA(.)

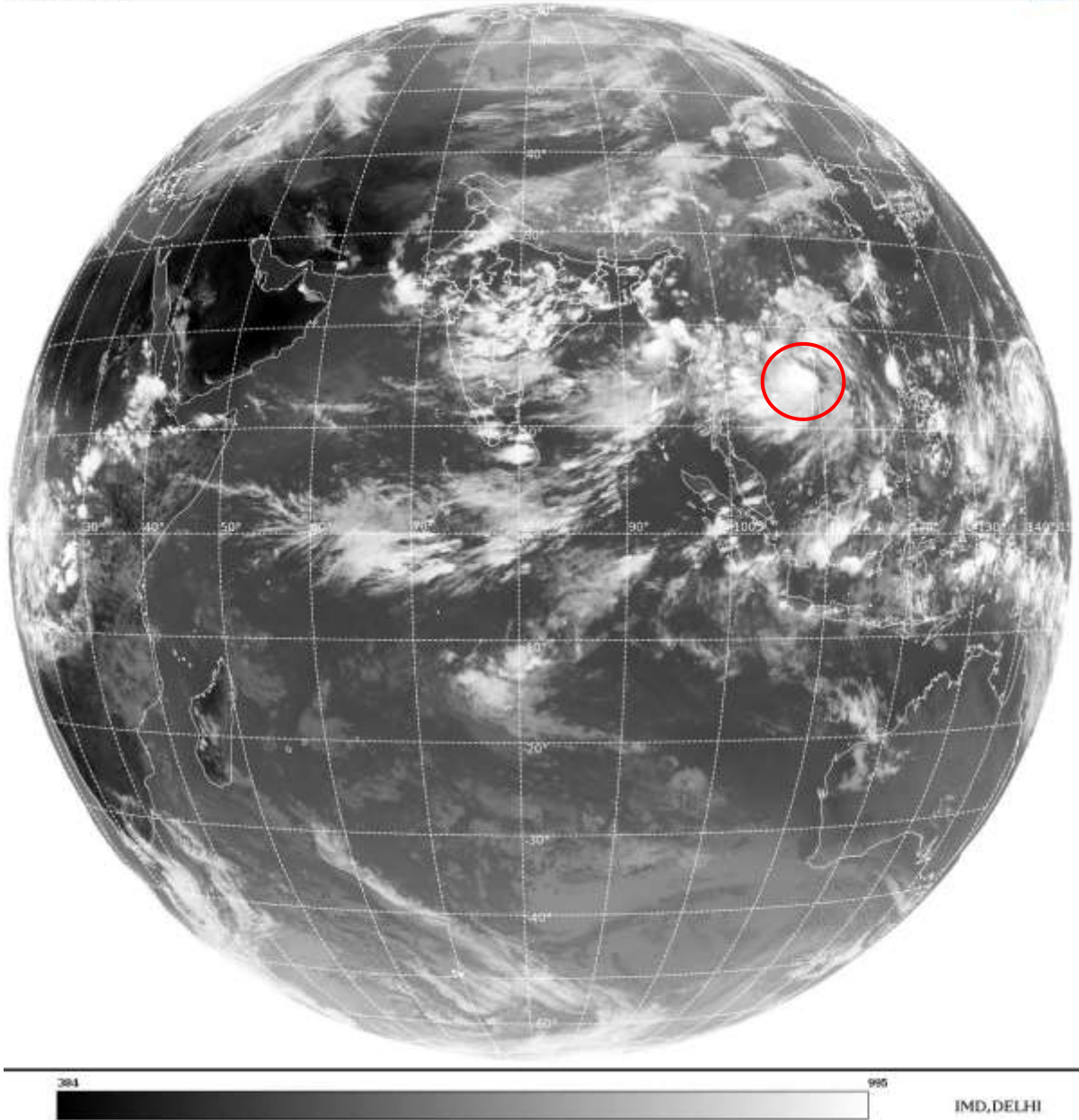
BAY OF BENGAL & ANDAMAN SEA:-

BKN LOW/MED CLOUDS WITH EMBDD INT TO V INT CONVTN OVER WC BAY OFF AP COAST ARAKAN COAST ADJ EC BAY SE BAY N ANDAMAN SEA (MINIMUM CTT MINUS 93 DEG CEL) (.)  
SCT LOW/MED CLOUDS WITH EMBDD ISOL MOD TO INT CONVTN OVER REST BAY GULF OF MARTABAN (.)

CLOUDS DESCRIPTION OUTSIDE INDIA:-

SAT : INSAT-3D IMG  
Thermal Infrared1 Count 10.8 um  
L1B FULL DISK

23-09-2021/(1200 to 1226) GMT  
23-09-2021/(1730 to 1756) IST



VORTEX OVER SOUTH CHINA SEA ADJ CENTRAL VIETNAM & N/HOOD:-

VORTEX OVER S CHINA SEA ADJ C VIETNAM & N/HOOD CENTERED NEAR 14.9N/109.2E (.) INTENSITY T2.0 (.) ASSTD BKN LOW/MED CLOUDS WITH EMBDD INT TO V INT CONVTN OVER AREA BET LAT 13.0N TO 16.0N AND LONG 106.0E TO 110.0E & VIETNAM (.)

SCT LOW/MED CLOUDS WITH EMBDD MOD TO INT CONVTN OVER S MALDIVES TIBET CHINA MYANMAR THAILAND GULF OF THAILAND CAMBODIA LAOS VIETNAM HAINAN TAIWAN S SUMATRA ADJ W COAST BORNEO SOUTH CHINA SEA CELEBES ILS PHILIPPINES AND OVER THE INDIAN OCEAN BET LAT 5.0N TO 5.0S LONG 48.0E TO 100.0E AND BET LAT 5.0S TO 16.5S LONG 73.0E TO 86.0E (.)

TOO 23/1840EF=

NNNN

**LEGEND:-**

<b>REGION</b>	<b>NORTH</b>	<b>J&amp;K HP PJB HARY DLH UP UTRKND</b>
	<b>EAST</b>	<b>BHR JHRKND CHTGH ORS WB SKMNORTH- EAST STATES</b>
	<b>WEST</b>	<b>RAJ MP GUJ MAHA GOA</b>
	<b>SOUTH</b>	<b>TLNGN AP KRNTK KER TN LKSDP ANDAMAN &amp; NICOBAR ILS</b>

<b>CLOUD DISTRIBUTION</b>	<b>ISOL</b>	<b>ISOLATED (LESS THAN 25%)</b>
	<b>SCT</b>	<b>SCATTERED (25 TO 50%)</b>
	<b>BKN</b>	<b>BROKEN (51 TO 75%)</b>
	<b>SLD</b>	<b>SOLID (GREATER THAN 75%)</b>
<b>CLOUDS TOP TEMPERATURE</b>	<b>CTT</b>	<b>CLOUD TOP TEMPERATURE</b>
<b>CONVECTION</b>	<b>WK CONVTN</b>	<b>WEAK CONVECTION (CTT GREATER THAN -25°C)</b>
	<b>MOD CONVTN</b>	<b>MODERATE CONVECTION (CTT BETWEEN -25°C TO -40°C)</b>
	<b>INT CONVTN</b>	<b>INTENSE CONVECTION (CTT BETWEEN -41°C TO -70°C)</b>
	<b>V INT CONVTN</b>	<b>VERY INTENSE CONVECTION (CTT LESS THAN -70°C)</b>
<b>METEOROLOGICAL SUB-DIVISIONS, STATES &amp; UNION TERRITORIES</b>	<b>ARUPR</b>	<b>ARUNACHAL PRADESH</b>
	<b>BHR</b>	<b>BIHAR</b>
	<b>CHTGH</b>	<b>CHHATTISGARH</b>
	<b>COTL AP</b>	<b>COASTAL ANDHRA PRADESH</b>
	<b>COTL KRNTK</b>	<b>COASTAL KARNATAKA</b>
	<b>COTL ORS</b>	<b>COASTAL ORISSA</b>
	<b>GUJ</b>	<b>GUJARAT</b>
	<b>GWB</b>	<b>GANGETIC WEST BENGAL</b>
	<b>HARY</b>	<b>HARYANA</b>
	<b>DLH</b>	<b>DELHI</b>
	<b>HP</b>	<b>HIMACHAL PRADESH</b>
	<b>J&amp;K</b>	<b>JAMMU AND KASHMIR</b>
	<b>JHRKND</b>	<b>JHARKHAND</b>
	<b>KER</b>	<b>KERALA</b>
	<b>KKN</b>	<b>KONKAN</b>
	<b>LKSDP</b>	<b>LAKSHADWEEP</b>
	<b>M MAHA</b>	<b>MADHYA MAHARASHTRA</b>
	<b>MAHA</b>	<b>MAHARASHTRA</b>
	<b>MANI</b>	<b>MANIPUR</b>
	<b>MEGHA</b>	<b>MEGHALAYA</b>
	<b>MIZO</b>	<b>MIZORAM</b>
<b>MP</b>	<b>MADHYA PRADESH</b>	
	<b>MRTHWD</b>	<b>MARATHWADA</b>

	<b>NAGA</b>	<b>NAGALAND</b>
	<b>N COTL AP</b>	<b>NORTH COASTAL ANDHRA PRADESH</b>
	<b>NIK</b>	<b>NORTH INTERIOR KARNATAKA</b>
	<b>ORS</b>	<b>ORISSA</b>
	<b>PJB</b>	<b>PUNJAB</b>
	<b>RAJ</b>	<b>RAJASTHAN</b>
	<b>RYLSM</b>	<b>RAYALASEEMA</b>
	<b>SAU &amp; KUTCH</b>	<b>SAURASHTRA &amp; KUTCH</b>
	<b>SHWB</b>	<b>SUB-HIMALAYAN WEST BENGAL</b>
	<b>SIK</b>	<b>SOUTH INTERIOR KARNATAKA</b>
	<b>SKM</b>	<b>SIKKIM</b>
	<b>TLNGN</b>	<b>TELANGANA</b>
	<b>TN</b>	<b>TAMIL NADU</b>
	<b>TRP</b>	<b>TRIPURA</b>
	<b>UP</b>	<b>UTTAR PRADESH</b>
	<b>UTRKN D</b>	<b>UTTARAKHAND</b>
	<b>VID</b>	<b>VIDHARBHA</b>
	<b>SHWB</b>	<b>SUB HIMALAYAN WEST BENGAL</b>
	<b>GWB</b>	<b>GANGETIC WEST BENGAL</b>
	<b>ARSEA</b>	<b>ARABIAN SEA</b>
	<b>ILS</b>	<b>ISLANDS</b>
<b>MISCELLANEOUS</b>	<b>ASSW</b>	<b>IN ASSOCIATION WITH</b>
	<b>ASSTD</b>	<b>ASSOCIATED</b>
	<b>LLC</b>	<b>LOW LEVEL CIRCULATION</b>
	<b>EMBDD</b>	<b>EMBEDDED</b>
	<b>N/HOOD</b>	<b>NEIGHBOURHOOD</b>
	<b>EXT</b>	<b>EXTREME</b>