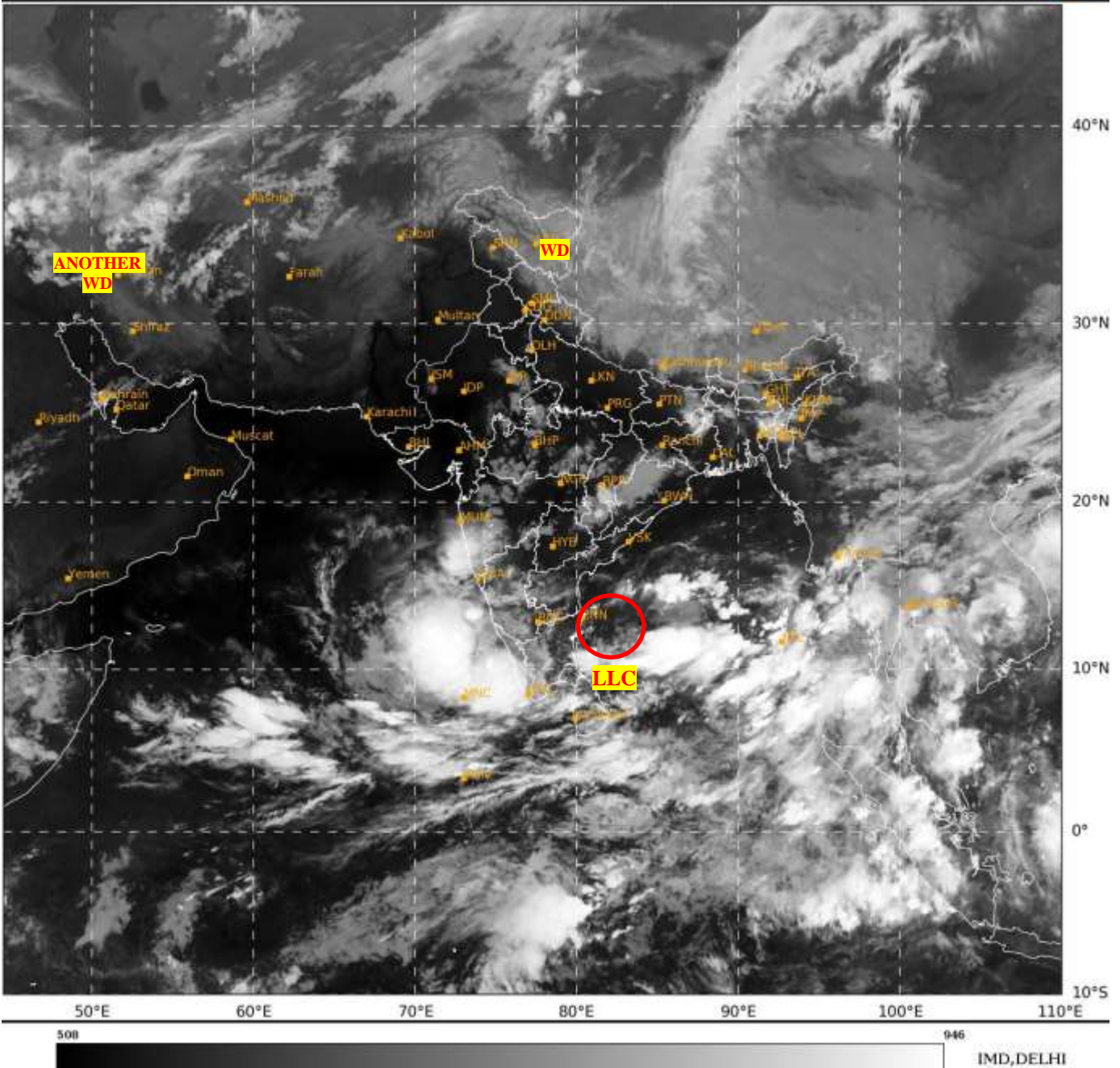




**SATELLITE BULLETIN BASED ON SATELLITE
IMAGERIES AND PRODUCTS**
21.05.2024 TIME 2100 UTC

SAT : INSAT-3DR IMG
IMG_TIR1 10.8 um
LIC Mercator

21-05-2024/(2115 to 2142) GMT
22-05-2024/(0245 to 0312) IST



TCIN50 DEMS 212100

SATELLITE BULLETIN BASED ON INSAT-3DR PIC OF 212115 UTC (.)

REGION COVERED BETWEEN LAT 50.0°N TO 35.0°S AND LONG 30.0°E TO 125.0°E (.)

SALIENT FEATURES:-

LLC OVER SOUTH-WEST BAY AND N/HOOD:-

LOW LEVEL CIRCULATION (LLC) OVER SW BAY & N/HOOD (.) ASSTD SCT TO BKN LOW/MED CLOUDS WITH EMBDD INT TO V INT CONVTN OVER SOUTH & CENTRAL BAY (MINIMUM CTT MINUS 93 DEG CEL) (.)

WESTERN DISTURBANCE:-

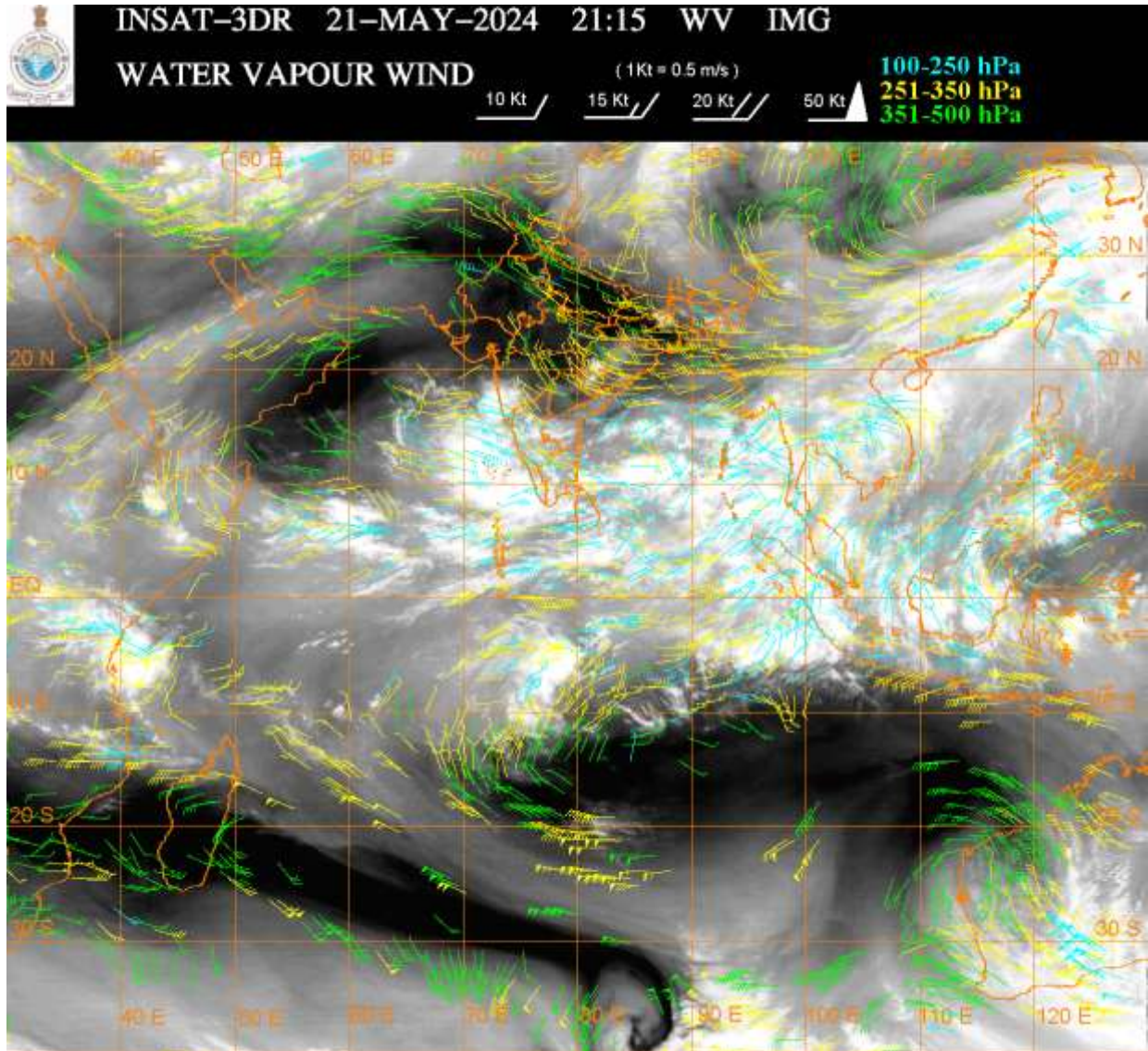
SCT MULTILAYERED CLOUDS OVER LADAKH TIBET ADJ CHINA IN ASSW **WD** OVER THE AREA (.)

SCT MULTILAYERED CLOUDS OVER S CASPIAN SEA IRAN AND N/HOOD IN ASSW **ANOTHER WD** OVER THE AREA (.)

CONVECTIVE / THUNDERSTORM ACTIVITY:-

INTENSE TO VERY INTENSE CONVECTIVE / THUNDERSTORM ACTIVITY OBSERVED OVER LKSDP ILS AREA ANDAMAN & NICOBAR ILS AREA (MINIMUM CTT MINUS 93 DEG CEL) KER (MINIMUM CTT MINUS 80 DEG CEL) S MADHYA MAHA (MINIMUM CTT MINUS 70 DEG CEL) (.)

MODERATE TO INTENSE CONVECTIVE / THUNDERSTORM ACTIVITY OBSERVED OVER SE BHR ADJ NE JHRKND & N GWB S CHTGH S ASSAM MIZO TRP S KKN KRNTK TN (MINIMUM CTT MINUS 55-65 DEG CEL) (.)



CLOUDS DESCRIPTION WITHIN INDIA:-

NORTH:-

SCT LOW/MED CLOUDS WITH EMBDD ISOL WK TO MOD CONVTN OVER LADAKH N HP N UTRKND S UP (.) ISOL TO SCT LOW/MED CLOUDS OVER J&K S HP S UTRKND E HARY DLH N UP (.)

EAST:-

SCT LOW/MED CLOUDS WITH EMBDD MOD TO INT CONVTN OVER SE BHR ADJ NE JHRKND & N GWB S CHTGH S ASSAM MIZO TRP & N BD (.) SCT LOW/MED CLOUDS WITH EMBDD WK TO MOD CONVTN OVER N BHR S JHRKND N CHTGH ORS S GWB SHWB SKM REST NE STATES (.)

WEST:-

SCT LOW/MED CLOUDS WITH EMBDD INT CONVTN OVER SOUTH MADHYA MAHA (.) SCT LOW/MED CLOUDS WITH EMBDD MOD TO INT CONVTN OVER S KKN AND ISOL WK TO MOD CONVTN OVER SW & E RAJ MP REST MAHA GOA (.) SCT LOW/MED CLOUDS OVER SW & E GUJ (.)

SOUTH:-

SCT TO BKN LOW/MED CLOUDS WITH EMBDD INT TO V INT CONVTN OVER KER LKSDP ILS AREA ANDAMAN & NICOBAR ILS AREA (.) SCT LOW/MED CLOUDS WITH EMBDD MOD TO INT CONVTN OVER KRNTK TN AND WK TO MOD CONVTN OVER TLNGN RYLSM COTL AP (.)

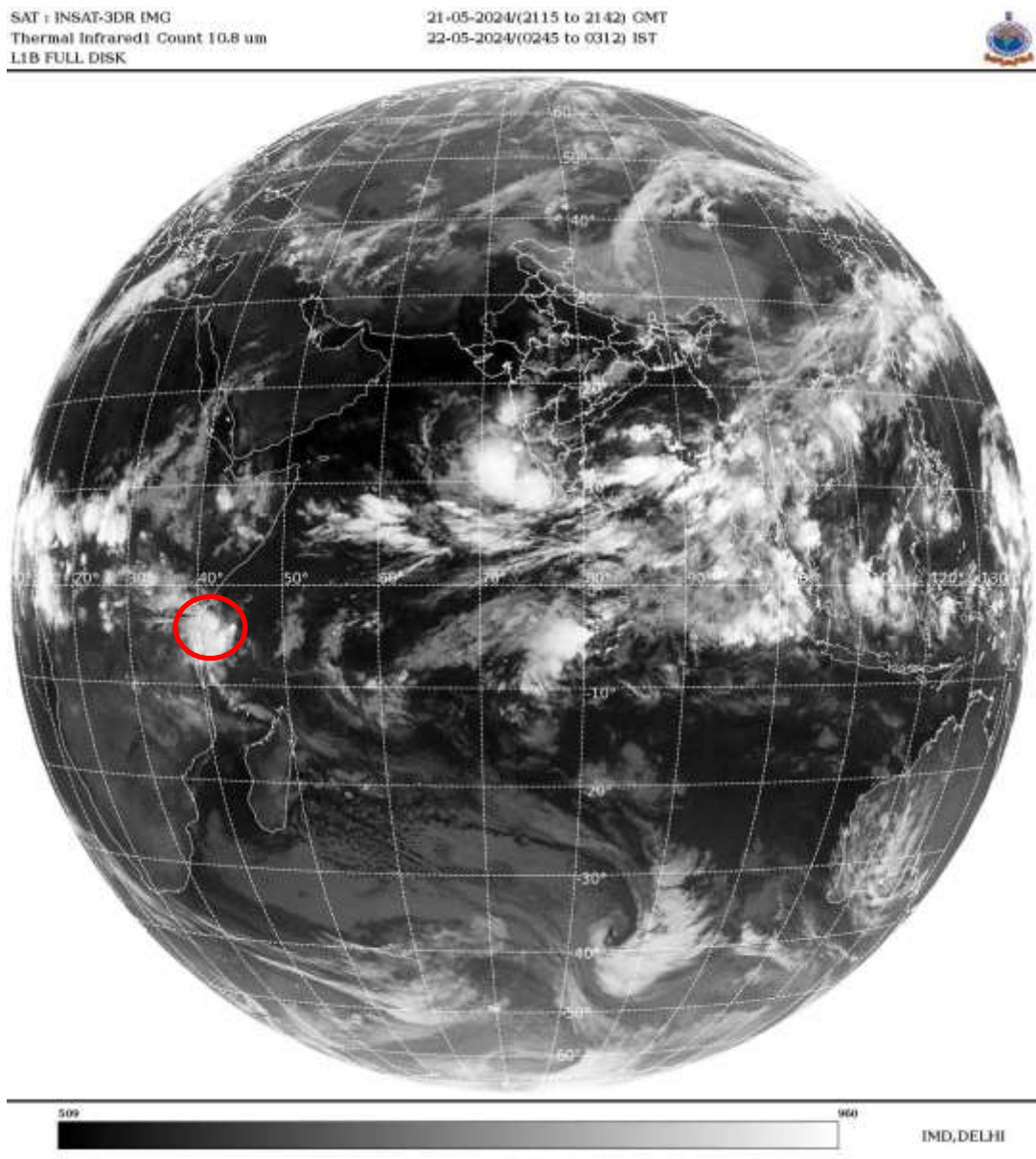
ARABIAN SEA:-

SCT TO BKN LOW/MED CLOUDS WITH EMBDD INT TO V INT CONVTN OVER EC AND SE ARSEA OFF MAHA-GOA-KRNTK-KER COASTS LKSDP ILS AREA AND ALSO OVER REST SOUTH ARSEA (MINIMUM **CTT MINUS 93 DEG CEL**) (.) SCT LOW/MED CLOUDS WITH EMBDD MOD TO INT CONVTN OVER COMORIN AREA AND ISOL WK TO MOD CONVTN OVER REST CENTRAL ARSEA (.)

BAY OF BENGAL & ANDAMAN SEA:-

SCT TO BKN LOW/MED CLOUDS WITH EMBDD INT TO V INT CONVTN OVER SOUTH & CENTRAL BAY ANDAMAN SEA TENASSERIM COAST AND GULF OF MARTABAN (MINIMUM **CTT MINUS 93 DEG CEL**) (.) SCT LOW/MED CLOUDS WITH EMBDD ISOL WK CONVTN OVER NORTH BAY (.)

CLOUDS DESCRIPTION OUTSIDE INDIA:-



VORTEX (IALY) OVER SOUTH INDIAN OCEAN:-

VORTEX (**IALY**) OVER SOUTH INDIAN OCEAN (**AREA D15 ADJ D10**) CENTERED NEAR **3.7S / 41.7E** (.) INTENSITY **T3.5/4.5** (.) ASSOCIATED MAXIMUM SUSTAINED WINDS OF **64-89 KTS** (.) ASSTD SCT TO BKN LOW/MED CLOUDS WITH EMBDD INT TO V INT CONVTN OVER AREA BET LAT 3.0S TO 8.0S LONG 39.0E TO 45.0E (.)

SCT LOW/MED CLOUDS WITH EMBDD MOD TO INT CONVTN OVER SRI LANKA PALK STR GULF OF MANNAR MALDIVES NEPAL BHUTAN TIBET CHINA YELLOW SEA EAST CHINA SEA TAIWAN MYANMAR THAILAND GULF OF THAILAND CAMBODIA LOAS VIETNAM GULF OF TONKIN HAINAN SUMATRA STR OF MALACCA MALAYSIA BORNEO SOUTH CHINA SEA JAVA SEA CELEBES ILS & SEA PHILIPPINES SULU SEA AND OVER INDIAN OCEAN BET LAT 5.0N TO 15.0S LONG 40.0E TO 105.0E (.)

TOO 22/0430 HRS IST=

NNNN

LEGEND:-

REGION	NORTH	J&K HP PJB HARY DLH UP UTRKND	
	EAST	BHR JHRKND CHTGH ORS WB SKM NORTH- EAST STATES	
	WEST	RAJ MP GUJ MAHA GOA	
	SOUTH	TLNGN AP KRNTK KER TN LKSDP ANDAMAN & NICOBAR ILS	
CLOUD DISTRIBUTION	ISOL	ISOLATED (LESS THAN 25%)	
	SCT	SCATTERED (25 TO 50%)	
	BKN	BROKEN (51 TO 75%)	
	SLD	SOLID (GREATER THAN 75%)	
CLOUDS TOP TEMPERATURE	CTT	CLOUD TOP TEMPERATURE	
CONVECTION	WK CONV TN	WEAK CONVECTION (CTT GREATER THAN -25°C)	
	MOD CONV TN	MODERATE CONVECTION (CTT BETWEEN -25°C TO -40°C)	
	INT CONV TN	INTENSE CONVECTION (CTT BETWEEN -41°C TO -70°C)	
	V INT CONV TN	VERY INTENSE CONVECTION (CTT LESS THAN -70°C)	
METEOROLOGICAL SUB- DIVISIONS, STATES & UNION TERRITORIES	ARUPR	ARUNACHAL PRADESH	
	BHR	BIHAR	
	CHTGH	CHHATTISGARH	
	COTL AP	COASTAL ANDHRA PRADESH	
	COTL KRNTK	COASTAL KARNATAKA	
	COTL ORS	COASTAL ORISSA	
	GUJ	GUJARAT	
	GWB	GANGETIC WEST BENGAL	
	HARY	HARYANA	
	DLH	DELHI	
	HP	HIMACHAL PRADESH	
	J&K	JAMMU AND KASHMIR	
	JHRKND	JHARKHAND	
	KER	KERALA	
	KKN	KONKAN	
	LKSDP	LAKSHADWEEP	
	M MAHA	MADHYA MAHARASHTRA	
	MAHA	MAHARASHTRA	
	MANI	MANIPUR	
	MEGHA	MEGHALAYA	
	MIZO	MIZORAM	
	MP	MADHYA PRADESH	
		MRTHWD	MARATHWADA
		NAGA	NAGALAND
N COTL AP		NORTH COASTAL ANDHRA PRADESH	
NIK		NORTH INTERIOR KARNATAKA	

	ORS	ORISSA
	PJB	PUNJAB
	RAJ	RAJASTHAN
	RYLSM	RAYALASEEMA
	SAU & KUTCH	SAURASHTRA & KUTCH
	SHWB	SUB-HIMALAYAN WEST BENGAL
	SIK	SOUTH INTERIOR KARNATAKA
	SKM	SIKKIM
	TLNGN	TELANGANA
	TN	TAMIL NADU
	TRP	TRIPURA
	UP	UTTAR PRADESH
	UTRKND	UTTARAKHAND
	VID	VIDHARBHA
	SHWB	SUB HIMALAYAN WEST BENGAL
	GWB	GANGETIC WEST BENGAL
	ARSEA	ARABIAN SEA
	ILS	ISLANDS
MISCELLANEOUS	ASSW	IN ASSOCIATION WITH
	ASSTD	ASSOCIATED
	LLC	LOW LEVEL CIRCULATION
	EMBDD	EMBEDDED
	N/HOOD	NEIGHBOURHOOD
	EXT	EXTREME