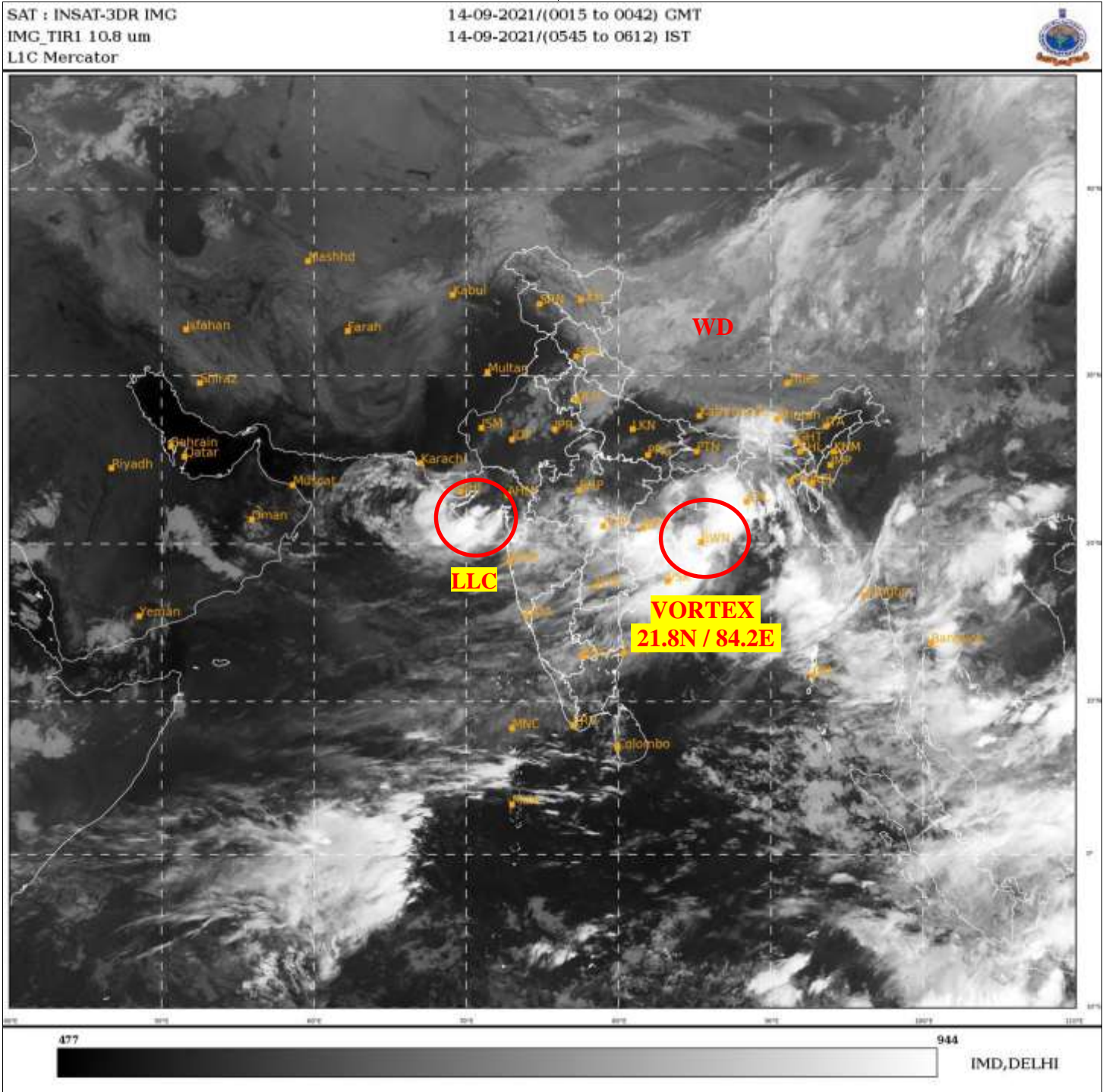




**SATELLITE BULLETIN BASED ON SATELLITE**  
**IMAGERIES AND PRODUCTS**  
**14.09.2021 TIME 0000 UTC**



TCIN50 DEMS 140000

SATELLITE BULLETIN BASED ON INSAT-3D PIC OF 140000 UTC (.)

REGION COVERED BETWEEN LAT 50.0°N TO 30.0°S AND LONG 40.0°E TO 125.0°E (.)

**SALIENT FEATURES:-**

**VORTEX OVER NORTH WEST ODISHA & N/HOOD:-**

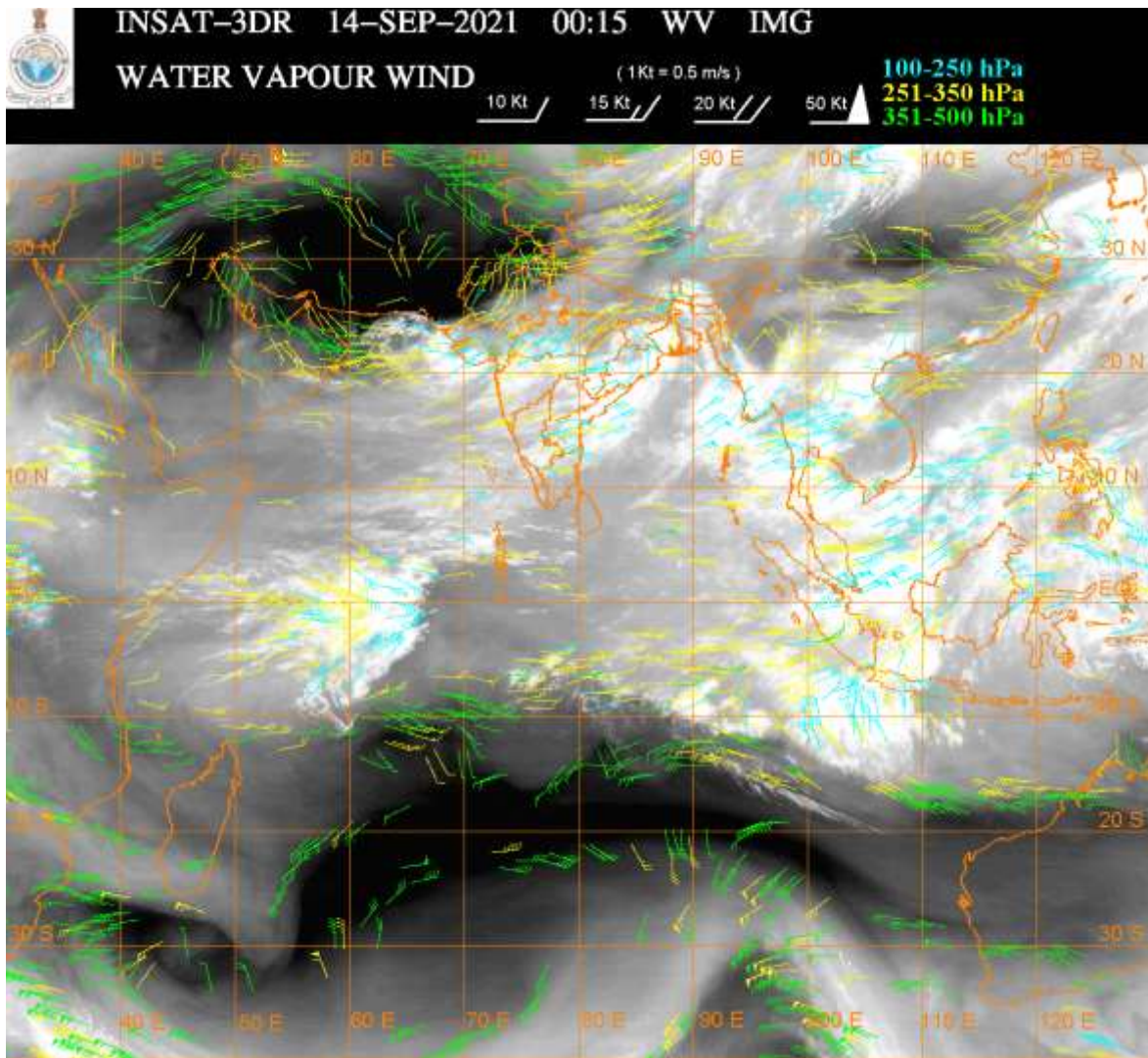
VORTEX OVER NORTH-WEST ODISHA & N/HOOD NOW LAY CENTERED **WITHIN HALF A DEGREE OF 21.8N / 84.2E** (.) **OVERLAND** (.) ASSTD BKN LOW/MED CLOUDS WITH EMBDD INT TO V INT CONVTN OVER CHTGJH JHRKND GWB ORS ADJ NW BAY & N/HOOD (.) MINIMUM CTT MINUS **93** DEG C (.)

**LLC OVER GUJARAT & N/HOOD:-**

LLC OVER GUJ & N/HOOD (.) ASSTD SCT TO BKN LOW/MED CLOUDS WITH EMBDD INT TO V INT CONVTN OVER GUJ NE ARSEA GULF OF KUTCH GULF OF CAMBAY & N/HOOD (.) MINIMUM CTT MINUS **80 TO 93** DEG C (.)

**WESTERN DISTURBANCE (WD):-**

SCT MULTILAYERED CLOUDS OVER TIBET ADJ CHINA & N/HOOD IN ASSW **WD** OVER THE AREA (.)



**CLOUDS DESCRIPTION WITHIN INDIA:-**

**NORTH:-**

SCT LOW/MED CLOUDS WITH EMBDD ISOL MOD TO INT CONVTN OVER EC UP (.) SCT LOW/MED CLOUDS WITH EMBDD ISOL WK TO MOD CONVTN OVER LADAKH E HP UTRKND HARY NW UP (.) SCT LOW/MED CLOUDS OVER E PJB DLH S UP (.)

**EAST:-**

BKN LOW/MED CLOUDS WITH EMBDD INT TO V INT CONVTN OVER S CHTGH ORS EXT SE JHRKND W GWB & S BD(MINIMUM CTT MINUS **93** DEG C) (.) SCT LOW/MED CLOUDS WITH EMBDD MOD TO INT CONVTN OVER NE CHTGH NC JHRKND EXT PARTS OF BHR SE GWB SKM MEGHA W ASSAM C MIZO & E BD (.) SCT LOW/MED CLOUDS WITH EMBDD ISOL WK TO MOD CONVTN OVER REST BHR REST JHRKND NW CHTGH NE GWB SE ASSAM MANI TRP (.)SCT LOW/MED CLOUDS OVER REST NE STATES (.)

**WEST:-**

SCT TO BKN LOW/MED CLOUDS WITH EMBDD INT TO V INT CONVTN OVER SW GUJ NW VID (MINIMUM CTT MINUS **80** TO **93** DEG C) (.) SCT LOW/MED CLOUDS WITH EMBDD MOD TO INT CONVTN OVER EXT N& SC MP REST VID NORTH M MAHA N KKN SE GUJ AND WK TO MOD CONVTN OVER NW GUJ NW MP N& SE RAJ REST MAHA (.)SCT LOW/MED CLOUDS OVER NE GUJ REST MP & GOA (.)

**SOUTH:-**

SCT LOW/MED CLOUDS WITH EMBDD INT TO V INT CONVTN OVER N COTL AP AND MOD TO INT CONVTN OVER SE TLNGN (.) SCT LOW/MED CLOUDS WITH EMBDD WK TO MOD CONVTN OVER KRNTK REST TLNGN S COTL AP RYLSM KER N TN N ANDAMAN & NICOBAR ILS (.)SCT LOW/MED CLOUDS OVER LKSDP S ANDAMAN (.)



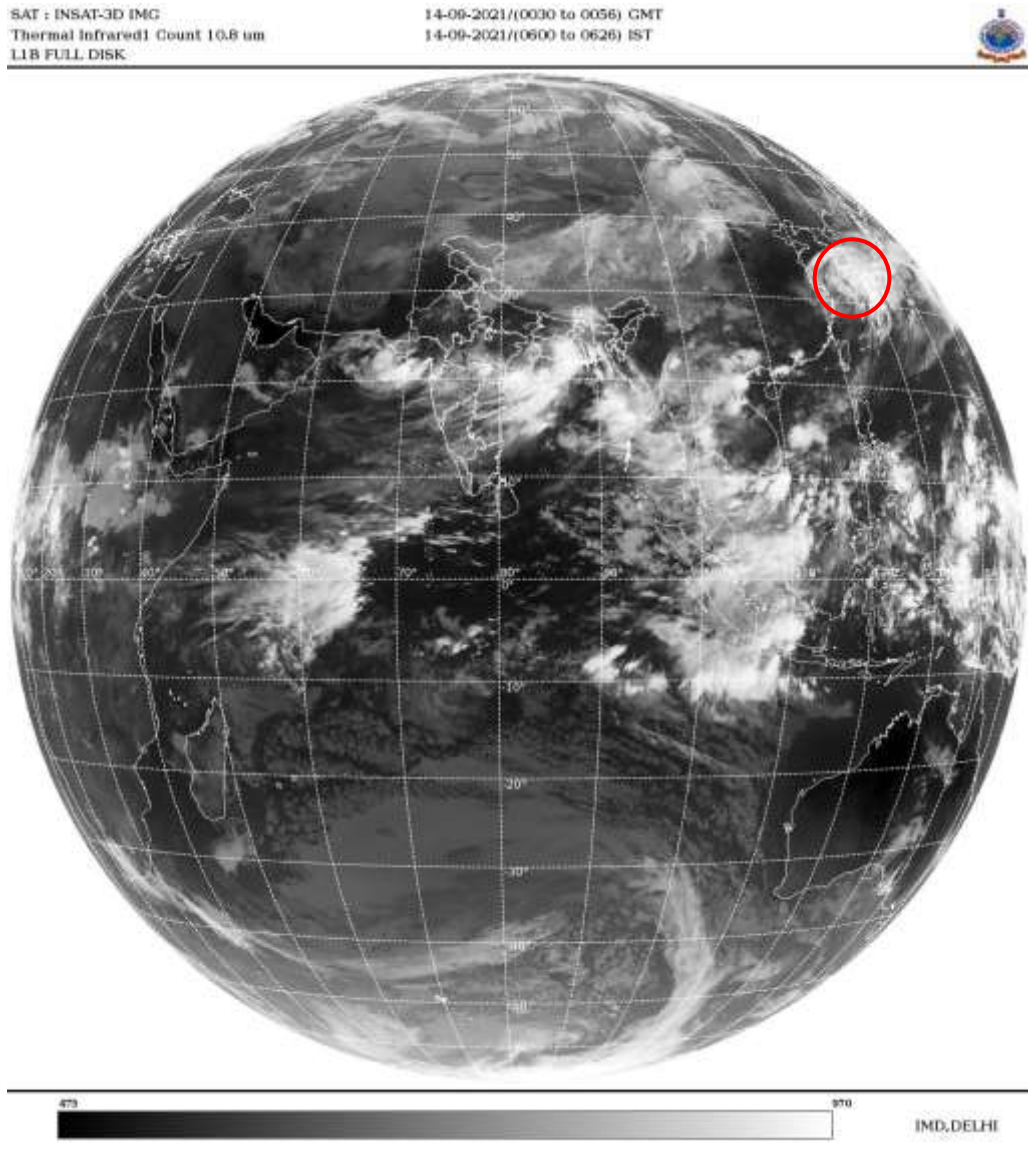
**ARABIAN SEA:-**

SCT TO BKN LOW/MED CLOUDS WITH EMBDD INT TO V INT CONVTN OVER NE ARSEA OFF GUJ COASTS GULF OF KUTCH (.) SCT LOW/MED CLOUDS WITH EMBDD MOD TO INT CONVTN OVER REST NE ARSEA GULF OF CAMBAY (.) SCT LOW/MED CLOUDS WITH EMBDD WK TO MOD CONVTN OVER EC ARSEA OFF MAHA COAST (.)

**BAY OF BENGAL & ANDAMAN SEA:-**

BKN LOW/MED CLOUDS WITH EMBDD INT TO V INT CONVTN OVER NORTH ADJ CENTRAL BAY (.) SCT LOW/MED CLOUDS WITH EMBDD MOD TO INT CONVTN OVER WC BAY OFF AP COASTS AND WK TO MOD CONVTN OVER SE BAY & ANDAMAN SEA (.)

**CLOUDS DESCRIPTION OUTSIDE INDIA:-**



**VORTEX (CHANTHU) OVER EAST CHINA SEA & N/HOOD:-**

VORTEX (**CHANTHU**) OVER EAST CHINA SEA & N/HOOD CENTERED NEAR **31.6N / 123.8E** (.) INTENSITY **T 3.5 / 4.0** (.) ASSTD BKN LOW/MED CLOUDS WITH EMBDD INT TO V INT CONVTN OVER AREA BET LAT 25.0N TO 36.0N LONG 120.0E TO 130.0E (.)

SCT LOW/MED CLOUDS WITH EMBDD MOD TO INT CONVTN OVER MALDIVES NEPAL TIBET CHINA E CHINA SEA MYANMAR THAILAND GULF OF THAILAND CAMBODIA LAOS VIETNAM SUMATRA STR OF MALACCA MALAY PENINSULA BORNEO S CHINA SEA JAVA ILS & SEA CELEBES ILS & SEA PHILIPPINES SULU SEA AND OVER INDIAN OCEAN BET LAT 5.0N TO 13.0S LONG 50.5E TO 112.0E (.)

TOO 14/0710EF=

NNNN

**LEGEND:-**

	NORTH	J&K HP PJB HARY DLH UP UTRKND
--	-------	-------------------------------

<b>REGION</b>	<b>EAST</b>	<b>BHR JHRKND CHTGH ORS WB SKMNORTH- EAST STATES</b>
	<b>WEST</b>	<b>RAJ MP GUJ MAHA GOA</b>
	<b>SOUTH</b>	<b>TLNGN AP KRNTK KER TN LKSDP ANDAMAN &amp; NICOBAR ILS</b>

<b>CLOUD DISTRIBUTION</b>	<b>ISOL</b>	<b>ISOLATED (LESS THAN 25%)</b>	
	<b>SCT</b>	<b>SCATTERED (25 TO 50%)</b>	
	<b>BKN</b>	<b>BROKEN (51 TO 75%)</b>	
	<b>SLD</b>	<b>SOLID (GREATER THAN 75%)</b>	
<b>CLOUDS TOP TEMPERATURE</b>	<b>CTT</b>	<b>CLOUD TOP TEMPERATURE</b>	
<b>CONVECTION</b>	<b>WK CONVTN</b>	<b>WEAK CONVECTION (CTT GREATER THAN -25°C)</b>	
	<b>MOD CONVTN</b>	<b>MODERATE CONVECTION (CTT BETWEEN -25°C TO -40°C)</b>	
	<b>INT CONVTN</b>	<b>INTENSE CONVECTION (CTT BETWEEN -41°C TO -70°C)</b>	
	<b>V INT CONVTN</b>	<b>VERY INTENSE CONVECTION (CTT LESS THAN -70°C)</b>	
<b>METEOROLOGICAL SUB-DIVISIONS, STATES &amp; UNION TERRITORIES</b>	<b>ARUPR</b>	<b>ARUNACHAL PRADESH</b>	
	<b>BHR</b>	<b>BIHAR</b>	
	<b>CHTGH</b>	<b>CHHATTISGARH</b>	
	<b>COTL AP</b>	<b>COASTAL ANDHRA PRADESH</b>	
	<b>COTL KRNTK</b>	<b>COASTAL KARNATAKA</b>	
	<b>COTL ORS</b>	<b>COASTAL ORISSA</b>	
	<b>GUJ</b>	<b>GUJARAT</b>	
	<b>GWB</b>	<b>GANGETIC WEST BENGAL</b>	
	<b>HARY</b>	<b>HARYANA</b>	
	<b>DLH</b>	<b>DELHI</b>	
	<b>HP</b>	<b>HIMACHAL PRADESH</b>	
	<b>J&amp;K</b>	<b>JAMMU AND KASHMIR</b>	
	<b>JHRKND</b>	<b>JHARKHAND</b>	
	<b>KER</b>	<b>KERALA</b>	
	<b>KKN</b>	<b>KONKAN</b>	
	<b>LKSDP</b>	<b>LAKSHADWEEP</b>	
	<b>M MAHA</b>	<b>MADHYA MAHARASHTRA</b>	
	<b>MAHA</b>	<b>MAHARASHTRA</b>	
	<b>MANI</b>	<b>MANIPUR</b>	
	<b>MEGHA</b>	<b>MEGHALAYA</b>	
	<b>MIZO</b>	<b>MIZORAM</b>	
	<b>MP</b>	<b>MADHYA PRADESH</b>	
		<b>MRTHWD</b>	<b>MARATHWADA</b>
		<b>NAGA</b>	<b>NAGALAND</b>
<b>N COTL AP</b>		<b>NORTH COASTAL ANDHRA PRADESH</b>	
<b>NIK</b>		<b>NORTH INTERIOR KARNATAKA</b>	
<b>ORS</b>		<b>ORISSA</b>	
<b>PJB</b>		<b>PUNJAB</b>	

	<b>RAJ</b>	<b>RAJASTHAN</b>
	<b>RYLSM</b>	<b>RAYALASEEMA</b>
	<b>SAU &amp; KUTCH</b>	<b>SAURASHTRA &amp; KUTCH</b>
	<b>SHWB</b>	<b>SUB-HIMALAYAN WEST BENGAL</b>
	<b>SIK</b>	<b>SOUTH INTERIOR KARNATAKA</b>
	<b>SKM</b>	<b>SIKKIM</b>
	<b>TLNGN</b>	<b>TELANGANA</b>
	<b>TN</b>	<b>TAMIL NADU</b>
	<b>TRP</b>	<b>TRIPURA</b>
	<b>UP</b>	<b>UTTAR PRADESH</b>
	<b>UTRKND</b>	<b>UTTARAKHAND</b>
	<b>VID</b>	<b>VIDHARBHA</b>
	<b>SHWB</b>	<b>SUB HIMALAYAN WEST BENGAL</b>
	<b>GWB</b>	<b>GANGETIC WEST BENGAL</b>
	<b>ARSEA</b>	<b>ARABIAN SEA</b>
	<b>ILS</b>	<b>ISLANDS</b>
<b>MISCELLANEOUS</b>	<b>ASSW</b>	<b>IN ASSOCIATION WITH</b>
	<b>ASSTD</b>	<b>ASSOCIATED</b>
	<b>LLC</b>	<b>LOW LEVEL CIRCULATION</b>
	<b>EMBDD</b>	<b>EMBEDDED</b>
	<b>N/HOOD</b>	<b>NEIGHBOURHOOD</b>
	<b>EXT</b>	<b>EXTREME</b>