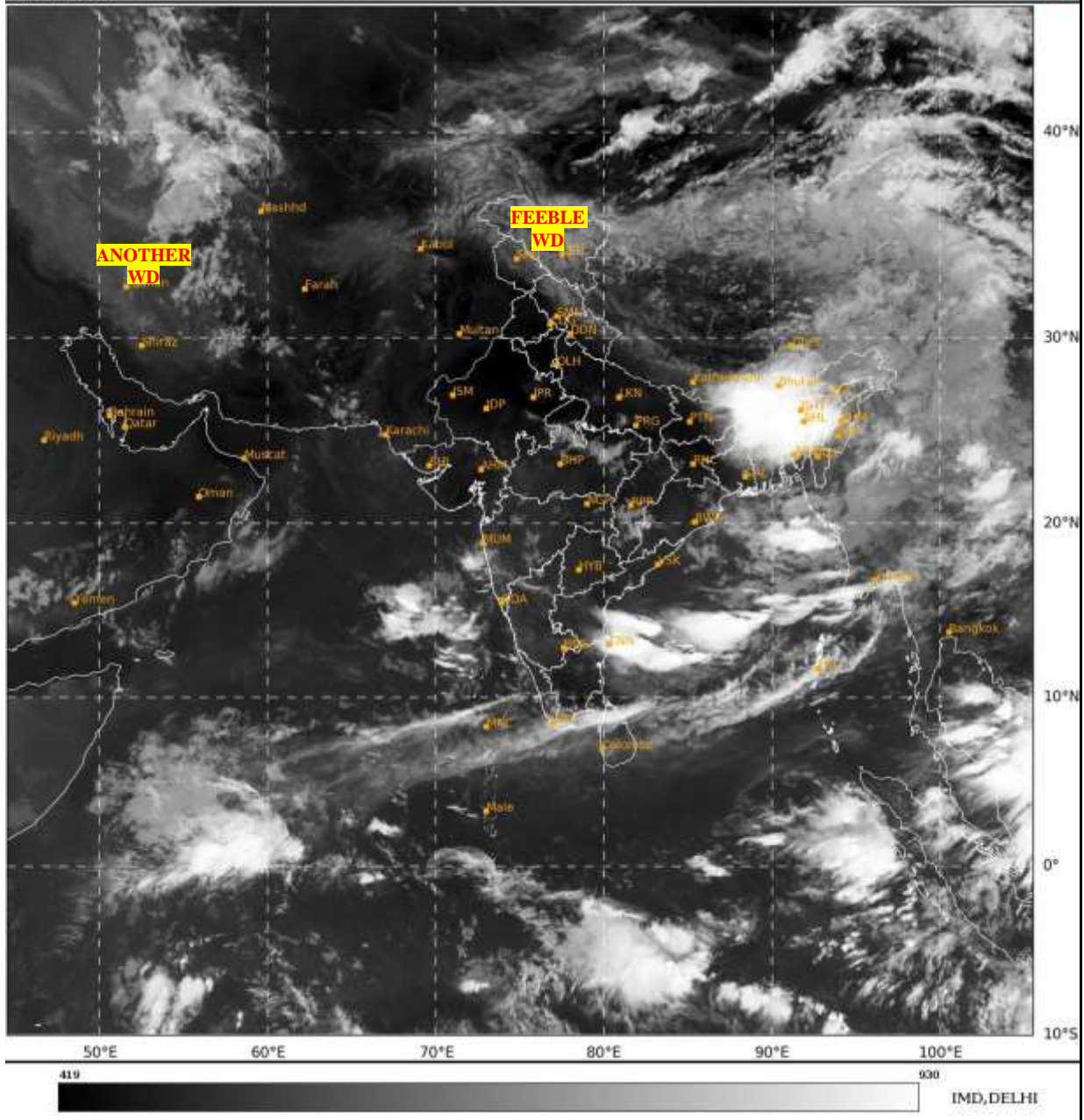




**SATELLITE BULLETIN BASED ON SATELLITE  
IMAGERIES AND PRODUCTS**  
**15.06.2024 TIME 0300 UTC**

SAT : INSAT-3D IMG  
IMG\_TIR1 10.8 um  
LIC Mercator

15-06-2024/(0300 to 0327) GMT  
15-06-2024/(0830 to 0857) IST



TCIN50 DEMS 150300

SATELLITE BULLETIN BASED ON INSAT-3D PIC OF 150300 UTC (.)

REGION COVERED BETWEEN LAT 50.0°N TO 35.0°S AND LONG 30.0°E TO 125.0°E (.)

**SALIENT FEATURES:-**

**WESTERN DISTURBANCE:-**

SCT MULTILAYERED CLOUDS OVER N LADAKH & N/HOOD IN ASSW **FEEBLE WD** OVER THE AREA (.)

SCT MULTILAYERED CLOUDS OVER E IRAN & N/HOOD IN ASSW **ANOTHER WD** OVER THE AREA (.)

**CONVECTIVE / THUNDERSTORM ACTIVITY:-**

VERY INTENSE CONVECTIVE / THUNDERSTORM ACTIVITY OVER NE BHR SHWB SKM WEST & SOUTH ASSAM MEGHA N TRP BD (MINIMUM **CTT MINUS 93 DEG CEL**) (.)





INSAT-3D 15-JUN-2024 03:00 TIR1 IMG

CLOUD MOTION WIND

(1Kt = 0.5 m/s)

10 Kt

15 Kt

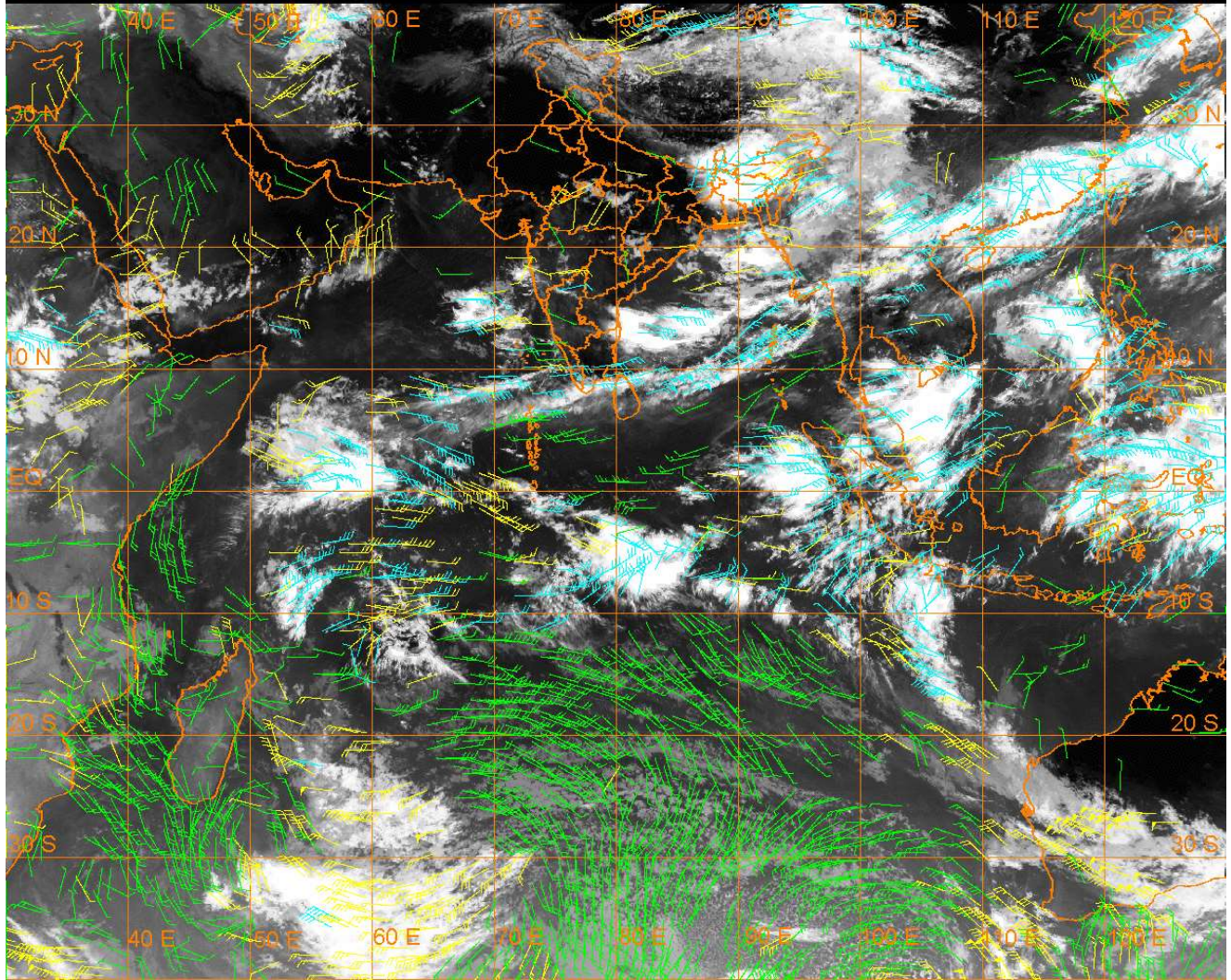
20 Kt

50 Kt

100-400 hPa

401-700 hPa

701-975 hPa



### CLOUDS DESCRIPTION WITHIN INDIA:-

#### NORTH:-

SCT LOW/MED CLOUDS WITH ISOL WK CONVTN OVER LADAKH S UP (.) SCT LOW/MED CLOUDS OVER J&K HP UTRKND NE UP (.)

#### EAST:-

BKN LOW/MED CLOUDS WITH EMBDD INT TO V INT CONVTN OVER NE BHR SHWB SKM WEST & S ASSAM MEGHA N TRP BD (MINIMUM **CTT MINUS 93 DEG CEL**) (.) SCT LOW/MED CLOUDS WITH EMBDD MOD TO INT CONVTN OVER REST NE STATES AND WK TO MOD CONVTN OVER CHTGH S ORS NW BHR GWB (.) SCT LOW/MED CLOUDS OVER REST BHR JHRKND N ORS (.)

#### WEST:-

SCT LOW/MED CLOUDS WITH EMBDD MOD TO INT CONVTN OVER CENTRAL KKN AND WK TO MOD CONVTN OVER MP REST MAHA GOA (.) SCT LOW/MED CLOUDS OVER E RAJ GUJ (.)

#### SOUTH:-

SCT LOW/MED CLOUDS WITH EMBDD MOD TO INT CONVTN OVER NE & S TN ANDAMAN ILS AND WK TO MOD CONVTN OVER COTL AP NIK S KER & LKSDP ILS (.) SCT LOW/MED CLOUDS OVER RYLSM REST KRNTK N KER REST TN & NICOBAR ILS (.)

#### ARABIAN SEA:-

SCT LOW/MED CLOUDS WITH EMBDD INT TO V INT CONVTN OVER EC COMORIN AREA (.) SCT LOW/MED CLOUDS WITH EMBDD MOD TO INT CONVTN OVER SE ARSEA (.) ISOL WK TO MOD CONVTN OVER WEST ARSEA (.)

#### BAY OF BENGAL & ANDAMAN SEA:-

SCT LOW/MED CLOUDS WITH EMBDD INT TO V INT CONVTN OVER SW BAY CENTRAL &

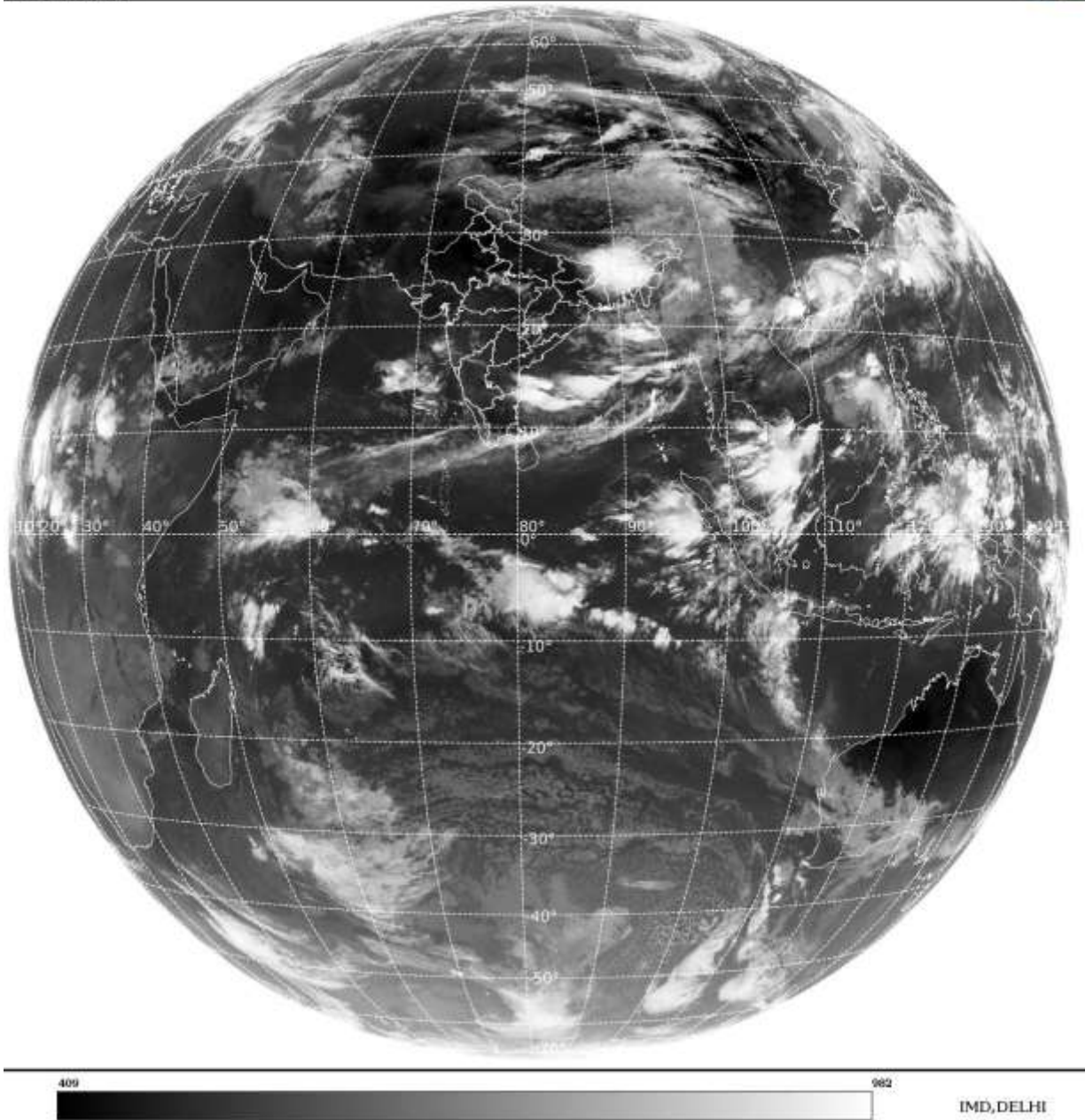


**NE BAY AND MOD TO INT CONVTN OVER REST BAY N ANDAMAN SEA & GULF OF MARTABAN (.)**

**CLOUDS DESCRIPTION OUTSIDE INDIA:-**

SAT : INSAT-3D IMG  
Thermal Infrared1 Count 10.8 um  
LIB FULL DISK

15-06-2024/(0300 to 0327) GMT  
15-06-2024/(0830 to 0857) IST



**SCT LOW/MED CLOUDS WITH EMBDD MOD TO INT CONVTN OVER N SRILANKA N MALDIVES E NEPAL BHUTAN TIBET CHINA MYANMAR THAILAND CAMBODIA LAOS VIETNAM HAINAN SUMATRA STR OF MALACCA MALAYSIA BORNEO SOUTH CHINA SEA JAVA ILS & SEA CELEBES ILS & SEA PHILIPPINES EAST CHINA SEA YELLOW SEA AND OVER INDIAN OCEAN BET LAT 5.0N TO 20.0S LONG 50.0E TO 110.0E AND BET LAT 20.0S TO 35.0S LONG 48.0E TO 70.0E (.)**

**TOO 15/0940 HRS IST=**

**NNNN**

**LEGEND:-**

<b>REGION</b>	<b>NORTH</b>	<b>J&amp;K HP PJB HARY DLH UP UTRKND</b>
	<b>EAST</b>	<b>BHR JHRKND CHTGH ORS WB SKM NORTH- EAST STATES</b>
	<b>WEST</b>	<b>RAJ MP GUJ MAHA GOA</b>

	<b>SOUTH</b>	<b>TLNGN AP KRNTK KER TN LKSDP ANDAMAN &amp; NICOBAR ILS</b>	
<b>CLOUD DISTRIBUTION</b>	<b>ISOL</b>	<b>ISOLATED (LESS THAN 25%)</b>	
	<b>SCT</b>	<b>SCATTERED (25 TO 50%)</b>	
	<b>BKN</b>	<b>BROKEN (51 TO 75%)</b>	
	<b>SLD</b>	<b>SOLID (GREATER THAN 75%)</b>	
<b>CLOUDS TOP TEMPERATURE</b>	<b>CTT</b>	<b>CLOUD TOP TEMPERATURE</b>	
<b>CONVECTION</b>	<b>WK CONVTN</b>	<b>WEAK CONVECTION (CTT GREATER THAN -25°C)</b>	
	<b>MOD CONVTN</b>	<b>MODERATE CONVECTION (CTT BETWEEN -25°C TO -40°C)</b>	
	<b>INT CONVTN</b>	<b>INTENSE CONVECTION (CTT BETWEEN -41°C TO -70°C)</b>	
	<b>V INT CONVTN</b>	<b>VERY INTENSE CONVECTION (CTT LESS THAN -70°C)</b>	
<b>METEOROLOGICAL SUB- DIVISIONS, STATES &amp; UNION TERITORIES</b>	<b>ARUPR</b>	<b>ARUNACHAL PRADESH</b>	
	<b>BHR</b>	<b>BIHAR</b>	
	<b>CHTGH</b>	<b>CHHATTISGARH</b>	
	<b>COTL AP</b>	<b>COASTAL ANDHRA PRADESH</b>	
	<b>COTL KRNTK</b>	<b>COASTAL KARNATAKA</b>	
	<b>COTL ORS</b>	<b>COASTAL ORISSA</b>	
	<b>GUJ</b>	<b>GUJARAT</b>	
	<b>GWB</b>	<b>GANGETIC WEST BENGAL</b>	
	<b>HARY</b>	<b>HARYANA</b>	
	<b>DLH</b>	<b>DELHI</b>	
	<b>HP</b>	<b>HIMACHAL PRADESH</b>	
	<b>J&amp;K</b>	<b>JAMMU AND KASHMIR</b>	
	<b>JHRKND</b>	<b>JHARKHAND</b>	
	<b>KER</b>	<b>KERALA</b>	
	<b>KKN</b>	<b>KONKAN</b>	
	<b>LKSDP</b>	<b>LAKSHADWEEP</b>	
	<b>M MAHA</b>	<b>MADHYA MAHARASHTRA</b>	
	<b>MAHA</b>	<b>MAHARASHTRA</b>	
	<b>MANI</b>	<b>MANIPUR</b>	
	<b>MEGHA</b>	<b>MEGHALAYA</b>	
	<b>MIZO</b>	<b>MIZORAM</b>	
	<b>MP</b>	<b>MADHYA PRADESH</b>	
		<b>MRTHWD</b>	<b>MARATHWADA</b>
		<b>NAGA</b>	<b>NAGALAND</b>
<b>N COTL AP</b>		<b>NORTH COASTAL ANDHRA PRADESH</b>	
<b>NIK</b>		<b>NORTH INTERIOR KARNATAKA</b>	
<b>ORS</b>		<b>ORISSA</b>	
<b>PJB</b>		<b>PUNJAB</b>	
<b>RAJ</b>		<b>RAJASTHAN</b>	
<b>RYLSM</b>		<b>RAYALSEEMA</b>	
<b>SAU &amp; KUTCH</b>		<b>SAURASHTRA &amp; KUTCH</b>	
<b>SHWB</b>		<b>SUB-HIMALAYAN WEST BENGAL</b>	

	<b>SIK</b>	<b>SOUTH INTERIOR KARNATAKA</b>
	<b>SKM</b>	<b>SIKKIM</b>
	<b>TLNGN</b>	<b>TELANGANA</b>
	<b>TN</b>	<b>TAMIL NADU</b>
	<b>TRP</b>	<b>TRIPURA</b>
	<b>UP</b>	<b>UTTAR PRADESH</b>
	<b>UTRKND</b>	<b>UTTRAKHAND</b>
	<b>VID</b>	<b>VIDARBHA</b>
	<b>SHWB</b>	<b>SUB HIMALAYAN WEST BENGAL</b>
	<b>GWB</b>	<b>GANGETIC WEST BENGAL</b>
	<b>ARSEA</b>	<b>ARABIAN SEA</b>
	<b>ILS</b>	<b>ISLANDS</b>
<b>MISCELLANEOUS</b>	<b>ASSW</b>	<b>IN ASSOCIATION WITH</b>
	<b>ASSTD</b>	<b>ASSOCIATED</b>
	<b>LLC</b>	<b>LOW LEVEL CIRCULATION</b>
	<b>EMBDD</b>	<b>EMBEDDED</b>
	<b>N/HOOD</b>	<b>NEIGHBOURHOOD</b>
	<b>EXT</b>	<b>EXTREME</b>