

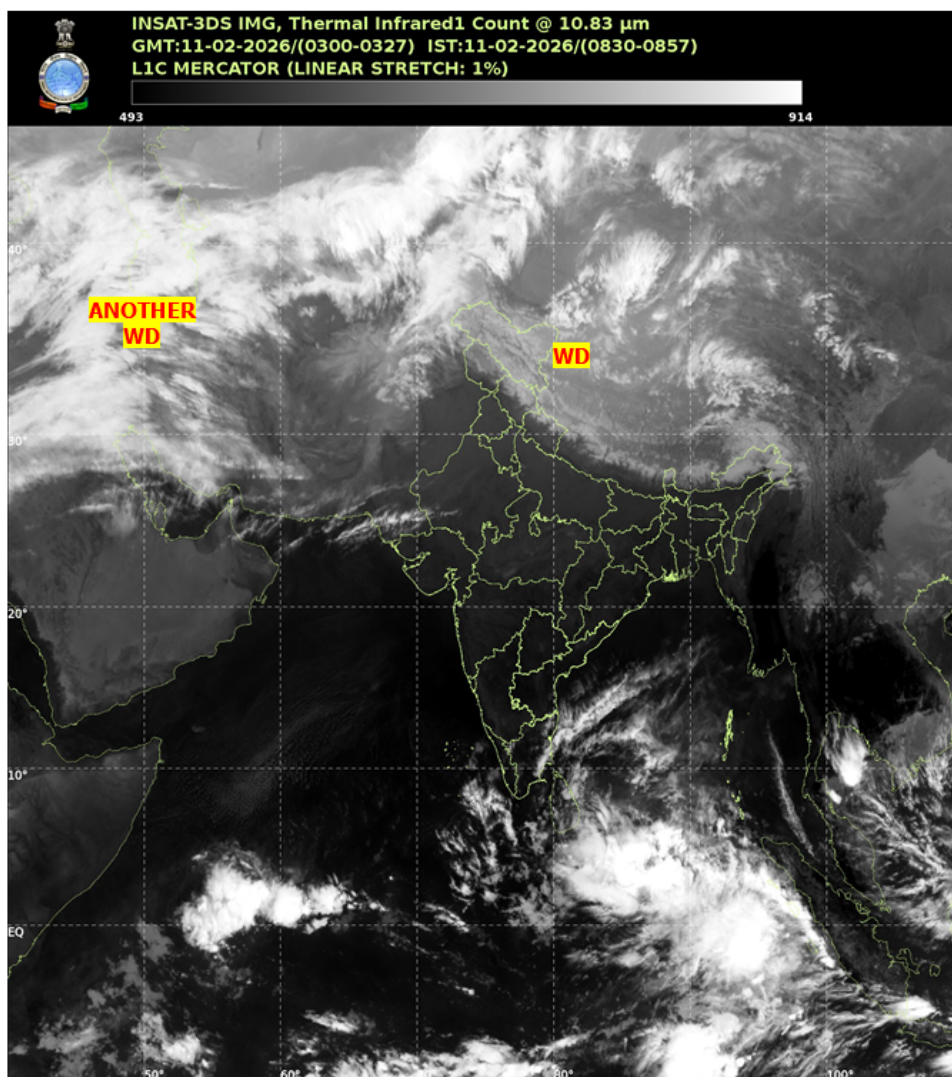


भारत मौसम विज्ञान विभाग
पृथ्वी विज्ञान मंत्रालय
India Meteorological Department
Ministry of Earth Sciences



SATELLITE BULLETIN BASED ON SATELLITE IMAGERIES AND PRODUCTS

Date: 2026-02-11 Time: 03:00:00 UTC



TCIN50 DEMS 110300

SATELLITE BULLETIN BASED ON INSAT-3DS PIC OF 110300 UTC (.)

REGION COVERED BETWEEN LAT 50.0°N TO 35.0°S AND LONG 40.0°E TO 125.0°E (.)

SALIENT FEATURES:

FOG/LOW CLOUDS

ISOL FOG/LOW CLOUDS OVER W RAJ (.)

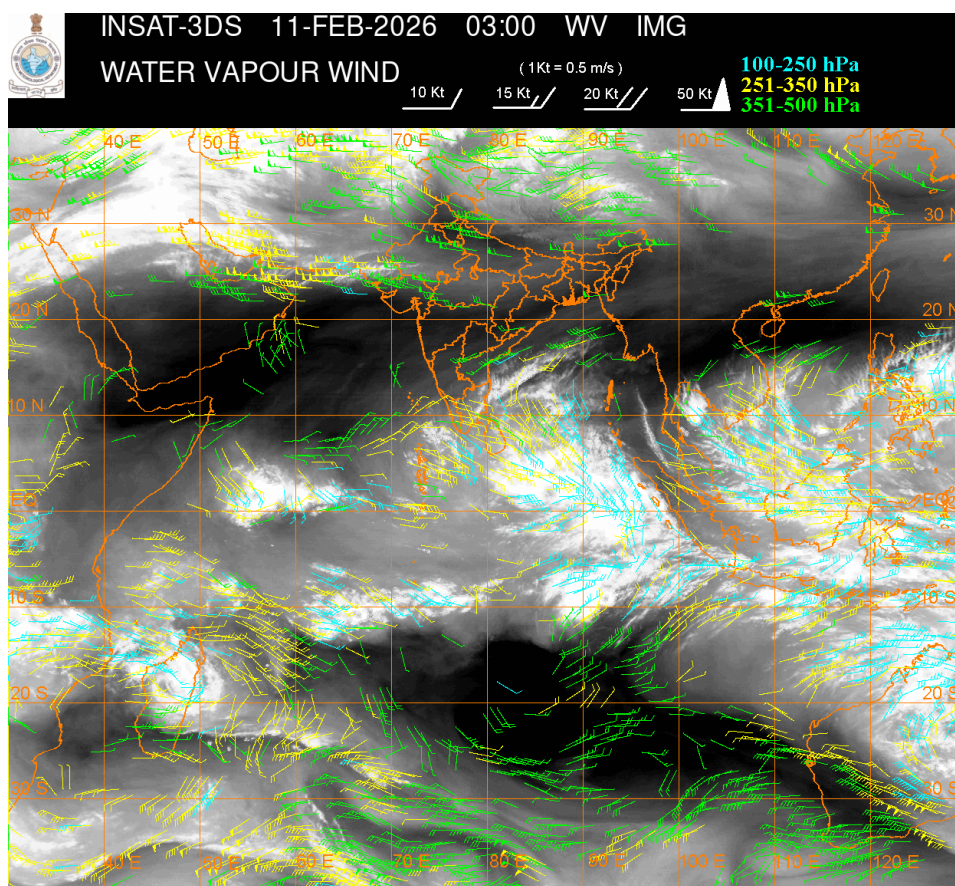
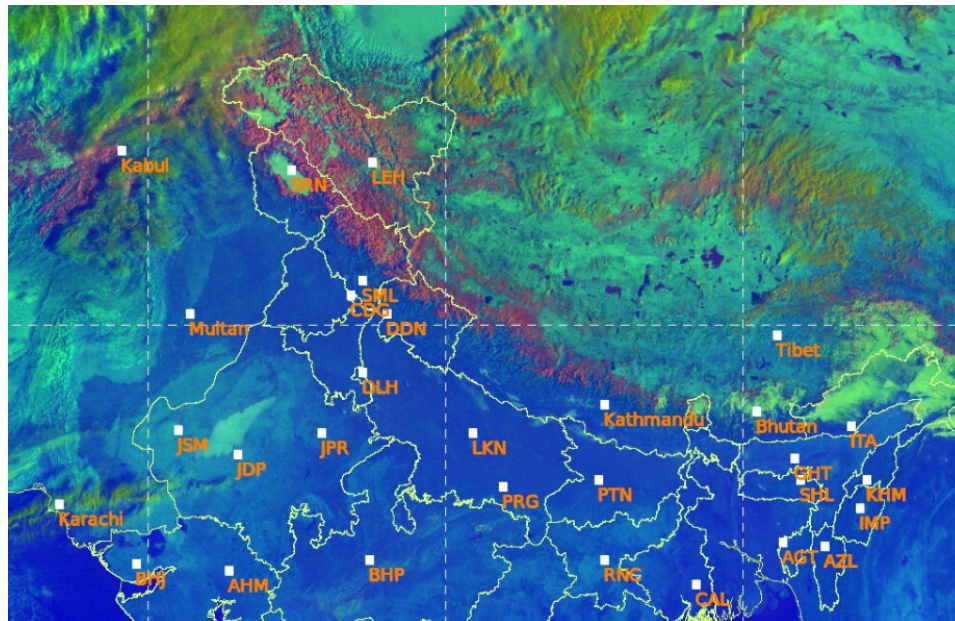
WESTERN DISTURBANCE (WD):-

SCT MULTILAYERED CLOUDS OVER NORTH TIBET ADJ CHINA IN ASSW WD OVER THE AREA (.)

SCT TO BKN MULTILAYERED CLOUDS OVER IRAN & N/HOOD IN ASSW ANOTHER WD OVER THE AREA (.)

CONVECTION OVER EQUATORIAL INDIAN OCEAN ADJOINING SOUTH BAY :-

INTENSE TO VERY INTENSE CONVECTION OVER EQUATORIAL INDIAN OCEAN ADJOINING SOUTH BAY PERSISTS (.) MINIMUM CTT MINUS 90 DEG CEL (.)



CLOUD DESCRIPTION WITHIN INDIA:

NORTH:

SCT LOW/MED CLOUDS WITH EMBDD ISOL WK TO MOD CONVTN OVER LADAKH J&K N HP N UTRKND (.) ISOL LOW/MED CLOUDS OVER S HP S UTRKND N UP (.)

EAST:

SCT LOW/MED CLOUDS WITH EMBDD ISOL WK TO MOD CONVTN OVER SKM ARUPR (.) ISOL LOW/MED CLOUDS OVER REST NORTH-EAST STATES (.)

WEST:

ISOL TO SCT LOW/MED CLOUDS OVER W RAJ MP (.)

SOUTH:

SCT LOW/MED CLOUDS WITH EMBDD ISOL WK TO MOD CONVTN OVER COTL TN ANDAMAN & NICOBAR ILS (.) ISOL TO SCT LOW/MED CLOUDS OVER TLNGN COTL AP EAST RYLSMA S SIK KER REST TN & LKSDP ILS (.)

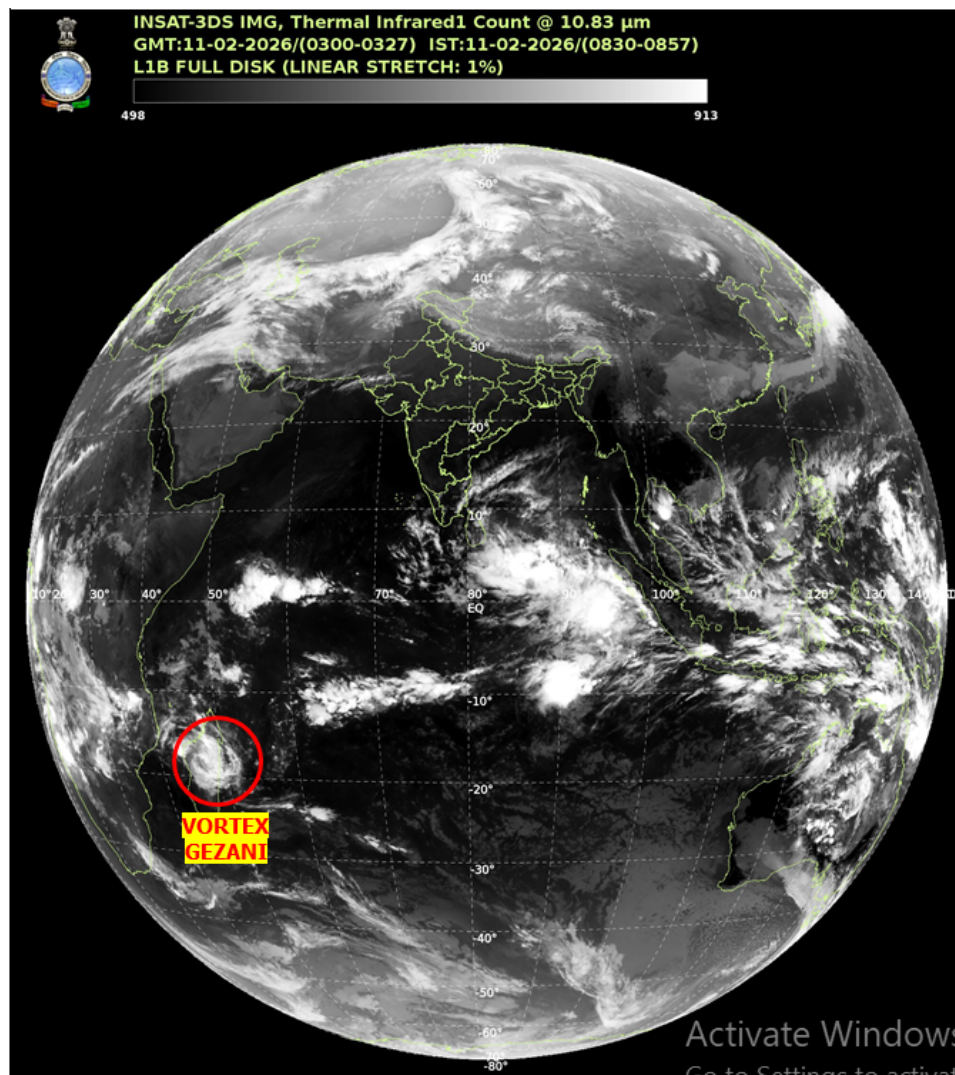
ARABIAN SEA:

SCT LOW/MED CLOUDS WITH EMBDD MOD TO INT CONVTN OVER COMORIN AREA ADJ SE ARSEA AND ISOL WK TO MOD CONVTN OVER MAKARAN COAST ADJ NORTH ARSEA (.)

BAY OF BENGAL & ANDAMAN SEA:

SCT TO BKN LOW/MED CLOUDS WITH EMBDD INT TO V INT CONVTN OVER SOUTH BAY ADJ EQUATORILAN INDIAN OCEAN (.) SCT LOW/MED CLOUDS WITH EMBDD WK TO MOD CONVTN OVER CENTRAL BAY ANDAMAN SEA (.)

CLOUD DESCRIPTION OUTSIDE INDIA:



VORTEX (GEZANI) OVER MADAGASCAR :-

VORTEX (GEZANI) OVER MADAGASCAR CENTERED NEAR 18.2S / 47.2E (.) OVERLAND (.) ASSTD SCT TO BKN LOW/MED CLOUDS WITH EMBDD INT TO V INT CONVTN OVER AREA BET LAT 14.0S TO

22.0S LONG 43.0E TO 51.0E ALSO OVER MADAGASCAR & N MOZAMBIQUE CHANNEL (.)

SCT LOW/MED CLOUDS WITH EMBDD MOD TO INT CONVTN OVER SRI LANKA GULF OF MANNAR
MALDIVES PAK TIBET CHINA CAMBODIA SOUTH VIETNAM GULF OF THAILAND SUMATRA STR OF
MALACCA MALAYSIA BORNEO SOUTH CHINA SEA JAVA ILS & SEA CELEBES ILS & SEA PHILIPPINES
SULU SEA MADAGASCAR MOZAMBIQUE CHANNEL AND OVER INDIAN OCEAN BET LAT 5.0N TO
15.0S LONG 40.0E TO 120.0E AND BET LAT 15.0S TO 30.0S LONG 50.0E TO 70.0E(.)

T00 11/0940 HRS IST

NNNN

LEGEND

REGION	
NORTH	J&K HP UTRKND PJB HARY DLH UP
EAST	BHR JHRKND CHTGH ORS WB SKM NORTH-EAST STATES
WEST	RAJ MP GUJ MAHA GOA
SOUTH	TLNGN AP KRNTK KER TN LKSDP ANDAMAN & NICOBAR ILS
CLOUD DISTRIBUTION	
ISOL	ISOLATED (LESS THAN 25%)
SCT	SCATTERED (25 TO 50%)
BKN	BROKEN (51 TO 75%)
SLD	SOLID (GREATER THAN 75%)
CLOUDS TOP TEMPERATURE	
CTT	CLOUD TOP TEMPERATURE
CONVECTION	
WK CONVTN	WEAK CONVECTION (CTT GREATER THAN -25°C)
MOD CONVTN	MODERATE CONVECTION (CTT BETWEEN -25°C TO -40°C)
INT CONVTN	INTENSE CONVECTION (CTT BETWEEN -41°C TO -70°C)
V INT CONVTN	VERY INTENSE CONVECTION (CTT LESS THAN -70°C)
METEOROLOGICAL SUB-DIVISIONS, STATES & UNION TERRITORIES	
J&K	JAMMU AND KASHMIR
HP	HIMACHAL PRADESH
UTRKND	UTTARAKHAND
PJB	PUNJAB
HARY	HARYANA
DLH	DELHI
BHR	BIHAR

JHRKND	JHARKHAND
CHTGH	CHHATTISGARH
ORS	ORISSA
GWB	GANGETIC WEST BENGAL
SHWB	SUB-HIMALAYAN WEST BENGAL
SKM	SIKKIM
ARUPR	ARUNACHAL PRADESH
ASSAM	ASSAM
MEGHA	MEGHALAYA
MANI	MANIPUR
MIZO	MIZORAM
TRP	TRIPURA
RAJ	RAJASTHAN
MP	MADHYA PRADESH
GUJ	GUJARAT
SAU & KUTCH	SAURASHTRA & KUTCH
MAHA	MAHARASHTRA
M MAHA	MADHYA MAHARASHTRA
MRTHWD	MARATHWADA
VID	VIDARBHA
KKN	KONKAN
TLNGN	TELANGANA
RYLSM	RAYALSEEMA
COTL AP	COASTAL ANDHRA PRADESH
NIK	NORTH INTERIOR KARNATAKA
SIK	SOUTH INTERIOR KARNATAKA
COTL KRNTK	COASTAL KARNATAKA
KER	KERALA
TN	TAMILNADU
LKSDP	LAKSHADWEEP
ILS	ISLANDS
ARSEA	ARABIAN SEA
MISCELLANEOUS	
ASSW	IN ASSOCIATION WITH

ASSTD	ASSOCIATED
LLC	LOW LEVEL CIRCULATION
EMBDD	EMBEDDED
N/HOOD	NEIGHBOURHOOD
EXT	EXTREME