

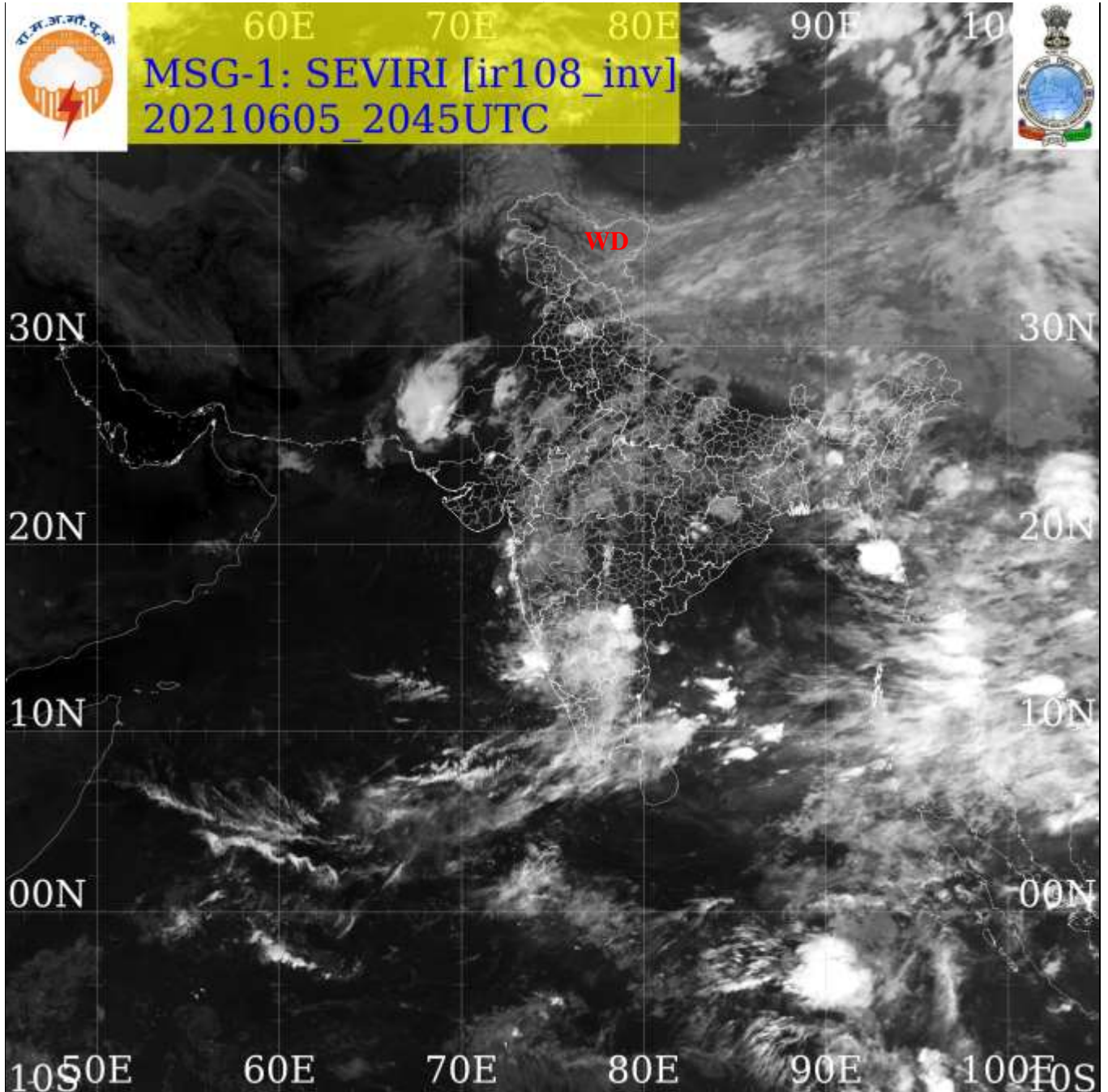


भारत मौसम विज्ञान विभाग
पृथ्वी विज्ञान मंत्रालय
India Meteorological Department
Ministry of Earth Sciences



**SATELLITE BULLETIN BASED ON SATELLITE IMAGERIES
AND PRODUCTS**

05.06.2021 TIME 2100 UTC



TCIN50 DEMS 052100

SATELLITE BULLETIN BASED ON INSAT-3D PIC OF 052100 UTC (.)

REGION COVERED BETWEEN LAT 50.0°N TO 30.0°S AND LONG 40.0°E TO 125.0°E (.)

SALIENT FEATURES:-

WESTERN DISTURBANCE (WD):-

SCT MULTILAYERED CLOUDS OVER LADAKH J&K HP N UTRKND UP NEPAL TIBET ADJ CHINA AND N/HOOD IN ASSW **WD** OVER THE AREA (.)

CLOUDS DESCRIPTION WITHIN INDIA:-

NORTH:-

SCT LOW/MED CLOUDS WITH EMBDD WK TO MOD CONVTN OVER J&K E LADAKH HP N UTRKND EXT E PJB ADJ NW HARY UP (.) SCT LOW/MED CLOUDS OVER S HP (.)

EAST:-

SCT LOW/MED CLOUDS WITH EMBDD MOD TO INT CONVTN OVER EXT E CHTGH ADJ W ORS W ASSAM & MEGHA (.) SCT LOW/MED CLOUDS WITH EMBDD WK TO MOD CONVTN OVER JHRKND E BHR GWB SHWB SKM & REST NE STATES (.)

WEST:-

SCT LOW/MED CLOUDS WITH EMBDD MOD TO INT CONVTN OVER EXT NW GUJ & GOA (.) SCT LOW/MED CLOUDS WITH EMBDD WK TO MOD CONVTN OVER RAJ MP SE GUJ MADHYA MAHA MRTHWD NW VID & KKN (.)

SOUTH:-

SCT TO BKN LOW/MED CLOUDS WITH EMBDD INT TO V INT CONVTN OVER EXT S TLNGN RYLSM ADJ S COTL AP (MINIMUM CTT MINUS 93 DEG C) AND MOD TO INT CONVTN OVER EC KRNTK EXT S KER W TN (.) SCT LOW/MED CLOUDS WITH EMBDD WK TO MOD CONVTN OVER EXT W TLNGN REST KRNTK RETS KER E TN S ANDAMAN & NICOBAR ILS (.)

ARABIAN SEA:-

SCT LOW/MED CLOUDS WITH EMBDD INT TO V INT CONVTN OVER EC ARSEA OFF N KRNTK COAST (.) SCT LOW/MED CLOUDS WITH EMBDD MOD TO INT CONVTN OVER SE ARSEA & COMORIN (.)

BAY OF BENGAL & ANDAMAN SEA:-

SCT LOW/MED CLOUDS WITH EMBDD INT TO V INT CONVTN OVER ARAKAN COAST GULF OF MARTABAN AND SW BAY (.) SCT LOW/MED CLOUDS WITH EMBDD MOD TO INT CONVTN OVER EC AND ANDAMAN SEA (.)

CLOUDS DESCRIPTION OUTSIDE INDIA:-

SCT LOW/MED CLOUDS WITH EMBDD MOD TO INT CONVTN OVER SRI LANKA GULF OF MANNAR PALK STR MALDIVES PAK NEPAL BHUTAN TIBET CHINA E CHINA SEA TAIWAN MYANMAR THAILAND GULF OF THAILAND CAMBODIA LAOS VIETNAM SUMATRA ADJ W COAST STR OF MALACCA MALAY PENINSULA S CHINA SEA N BORNEO JAVA ILS CELEBES ILS & SEA PHILIPPINES SULU SEA AND OVER INDIAN OCEAN BET LAT 5.0N TO 2.0S LONG 53.0E TO 75.0E AND BET LAT 5.0N TO 14.0S LONG 82.0E TO 98.0E (.)

TOO 06/0235EF=

NNNN

LEGEND:-

| | | |
|---------------|--------------|--|
| REGION | NORTH | J&K HP PJB HARY DLH UP UTRKND |
| | EAST | BHR JHRKND CHTGH ORS WB SKM NORTH-EAST STATES |
| | WEST | RAJ MP GUJ MAHA GOA |
| | SOUTH | TLNGN AP KRNTK KER TN LKSDP ANDAMAN & NICOBAR ILS |
| | | |

| | | |
|---|---------------------|---|
| CLOUD DISTRIBUTION | ISOL | ISOLATED (LESS THAN 25%) |
| | SCT | SCATTERED (25 TO 50%) |
| | BKN | BROKEN (51 TO 75%) |
| | SLD | SOLID (GREATER THAN 75%) |
| CLOUDS TOP TEMPERATURE | CTT | CLOUD TOP TEMPERATURE |
| CONVECTION | WK CONVTN | WEAK CONVECTION (CTT GREATER THAN -25°C) |
| | MOD CONVTN | MODERATE CONVECTION (CTT BETWEEN -25°C TO -40°C) |
| | INT CONVTN | INTENSE CONVECTION (CTT BETWEEN -41°C TO -70°C) |
| | V INT CONVTN | VERY INTENSE CONVECTION (CTT LESS THAN -70°C) |
| METEOROLOGICAL SUB-DIVISIONS, STATES & UNION TERRITORIES | ARUPR | ARUNACHAL PRADESH |
| | BHR | BIHAR |
| | CHTGH | CHHATTISGARH |
| | COTL AP | COASTAL ANDHRA PRADESH |
| | COTL KRNTK | COASTAL KARNATAKA |
| | COTL ORS | COASTAL ORISSA |
| | GUJ | GUJARAT |
| | GWB | GANGETIC WEST BENGAL |
| | HARY | HARYANA |
| | DLH | DELHI |
| | HP | HIMACHAL PRADESH |
| | J&K | JAMMU AND KASHMIR |
| | JHRKND | JHARKHAND |
| | KER | KERALA |
| | KKN | KONKAN |
| | LKSDP | LAKSHADWEEP |
| | M MAHA | MADHYA MAHARASHTRA |
| | MAHA | MAHARASHTRA |
| | MANI | MANIPUR |
| | MEGHA | MEGHALAYA |
| | MIZO | MIZORAM |
| | MP | MADHYA PRADESH |
| | | MRTHWD |
| | NAGA | NAGALAND |

| | | |
|----------------------|------------------------|-------------------------------------|
| | N COTL AP | NORTH COASTAL ANDHRA PRADESH |
| | NIK | NORTH INTERIOR KARNATAKA |
| | ORS | ORISSA |
| | PJB | PUNJAB |
| | RAJ | RAJASTHAN |
| | RYLSM | RAYALASEEMA |
| | SAU & KUTCH | SAURASHTRA & KUTCH |
| | SHWB | SUB-HIMALAYAN WEST BENGAL |
| | SIK | SOUTH INTERIOR KARNATAKA |
| | SKM | SIKKIM |
| | TLNGN | TELANGANA |
| | TN | TAMIL NADU |
| | TRP | TRIPURA |
| | UP | UTTAR PRADESH |
| | UTRKND | UTTARAKHAND |
| | VID | VIDHARBHA |
| | SHWB | SUB HIMALAYAN WEST BENGAL |
| | GWB | GANGETIC WEST BENGAL |
| | ARSEA | ARABIAN SEA |
| | ILS | ISLANDS |
| MISCELLANEOUS | ASSW | IN ASSOCIATION WITH |
| | ASSTD | ASSOCIATED |
| | LLC | LOW LEVEL CIRCULATION |
| | EMBDD | EMBEDDED |
| | N/HOOD | NEIGHBOURHOOD |
| | EXT | EXTREME |