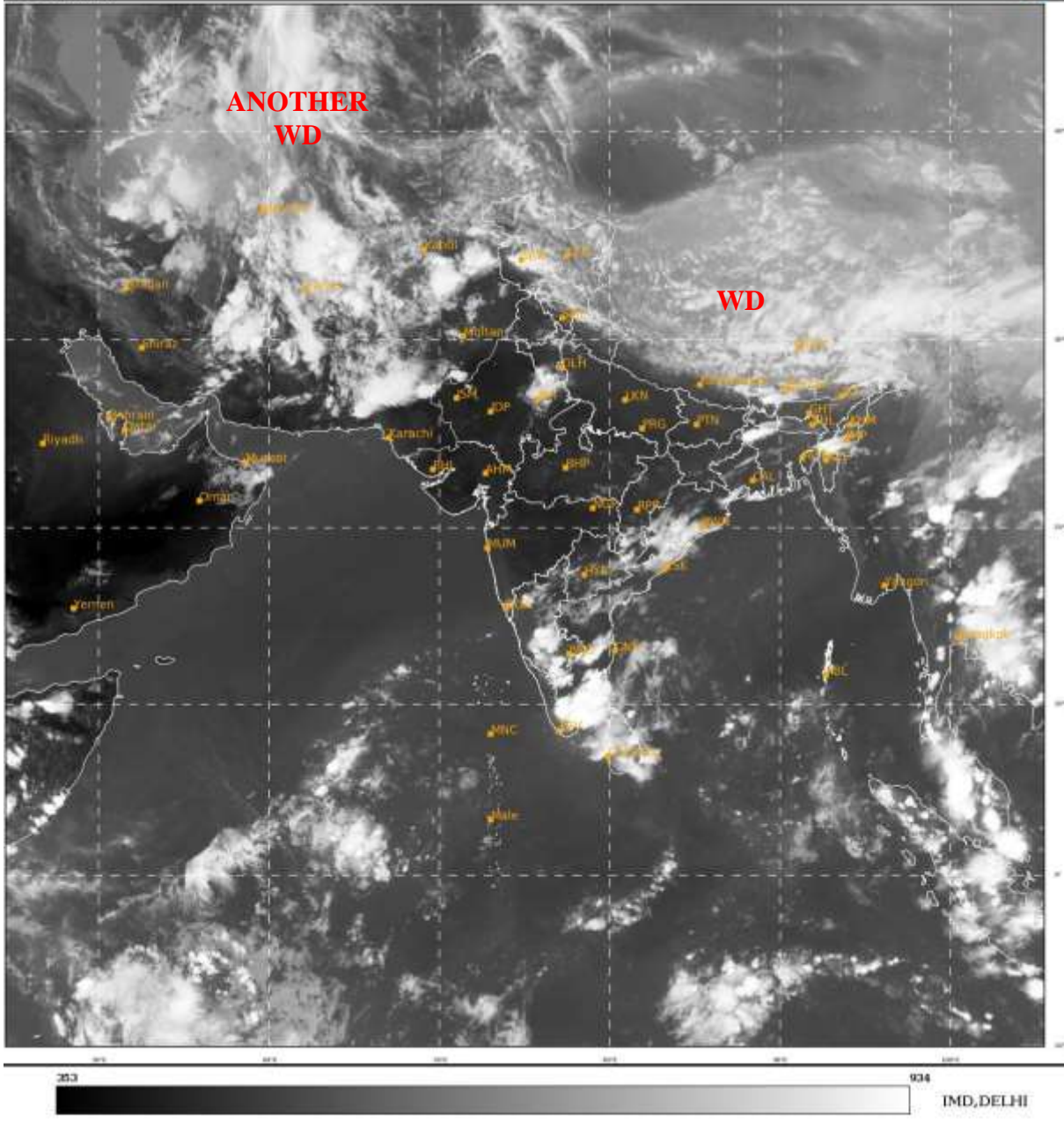




**SATELLITE BULLETIN BASED ON SATELLITE
IMAGERIES AND PRODUCTS**
17.04.2022 TIME 1200 UTC

SAT : INSAT-3D IMG
IMG_TIR1 10.8 um
LIC Mercator

17-04-2022/(1200 to 1226) GMT
17-04-2022/(1730 to 1756) IST



TCIN50 DEMS 171200

SATELLITE BULLETIN BASED ON INSAT-3D PIC OF 171200 UTC (.)

REGION COVERED BETWEEN LAT 50.0°N TO 30.0°S AND LONG 40.0°E TO 125.0°E (.)

SALIENT FEATURES:-

WESTERN DISTURBANCE (WD):-

SCT MULTILAYERED CLOUDS OVER TIBET ADJ CHINA IN ASSW **WD** OVER THE AREA (.)

SCT MULTILAYERED CLOUDS OVER IRAN AFGAN PAK AND N/HOOD IN ASSW **ANOTHER WD**
OVER THE AREA (.)

SCT MULTILAYERED CLOUDS OVER BLACK SEA AND N/HOOD IN ASSW **ANOTHER WD** OVER
THE AREA (.)

THUNDERSTORM / CONVECTIVE ACTIVITY:-

THUNDERSTORM / CONVECTIVE ACTIVITIES OBSERVED OVER SIK TN SE KER S ORS S CHTGH
S SHWB MANI ADJ MIZO ADJ SE ASSAM (.)

PRECIPITATION NOWCASTING:-

(BASED ON SCOPE NOWCASTING TOOL AT 1100 UTC AT A LEAD TIME OF 03 HRS (MM/HR) :-

RAINFALL UPTO **10-15 MM** OBSERVED OVER SIK TN SE KER (.)

RAINFALL UPTO **2-7 MM** OBSERVED OVER S CHTGH S ORS SE ASSAM S MANI ADJ MIZO (.)

CLOUDS DESCRIPTION WITHIN INDIA:-

NORTH:-

SCT LOW/MED CLOUDS WITH EMBDD WK TO MOD CONVTN OVER LADAKH N J&K HP N UTRKND EXT PARTS OF HARY (.) SCT LOW/MED CLOUDS OVER S J&K S UTRKND PJB REST HARY (.)

EAST:-

SCT LOW/MED CLOUDS WITH EMBDD MOD TO INT CONVTN OVER E SHWB E ARUPR S MANI ADJ SE ASSAM N MIZO AND WK TO MOD CONVTN OVER S CHTGH S ORS SW GWB SKM W ARUPR (.) SCT LOW/MED CLOUDS OVER S JHRKND N ORS N CHTGH N GWB REST NE STATES (.)

WEST:-

SCT LOW/MED CLOUDS WITH EMBDD WK TO MOD CONVTN OVER NE RAJ (.) ISOL TO SCT LOW/MED CLOUDS OVER MP (.)

SOUTH:-

SCT LOW/MED CLOUDS WITH EMBDD INT TO V INT CONVTN OVER TN SE KER SIK NORTH OF NIK AND WK TO MOD CONVTN OVER RYLSMA N COTL AP (.) ISOL TO SCT LOW/MED CLOUDS OVER TLNGN S COTL AP LKSDP ANDAMAN & NICOBAR ILS (.)

ARABIAN SEA:-

SCT LOW/MED CLOUDS WITH EMBDD WK TO MOD CONVTN OVER SC ARSEA AND COMORIN AREA (.)

BAY OF BENGAL & ANDAMAN SEA:-

SCT LOW/MED CLOUDS WITH EMBDD MOD TO INT CONVTN OVER SW BAY OFF TN COAST AND SE BAY (.) SCT LOW/MED CLOUDS WITH EMBDD WK CONVTN OVER WC BAY (.)

CLOUDS DESCRIPTION OUTSIDE INDIA:- |

SCT LOW/MED CLOUDS WITH EMBDD MOD TO INT CONVTN OVER TIBET CHINA YELLOW SEA E CHINA SEA N MYANMAR THAILAND GULF OF THAILAND LAOS N VIETNAM GULF OF TONKIN SUMATRA STR OF MALACCA MALAYSIA BORNEO S CHINA SEA JAVA SEA CELEBES ILS & SEA S PHILIPPINES MOZAMBIQUE CHANNEL AND OVER INDIAN OCEAN BET LAT 5.0N TO 20.0S LONG 48.0E TO 75.0E AND BET LAT 5.0S TO 17.0S LONG 73.0E TO 90.0E (.)

TOO 17/1850 HRS IST=

NNNN

LEGEND:-

REGION	NORTH	J&K HP PJB HARY DLH UP UTRKND
	EAST	BHR JHRKND CHTGH OR WB SKM NORTH- EAST STATES
	WEST	RAJ MP GUJ MAHA GOA
	SOUTH	TLNGN AP KRNTK KER TN LKSDP ANDAMAN & NICOBAR ILS

CLOUD DISTRIBUTION	ISOL	ISOLATED (LESS THAN 25%)
	SCT	SCATTERED (25 TO 50%)
	BKN	BROKEN (51 TO 75%)
	SLD	SOLID (GREATER THAN 75%)
CLOUDS TOP TEMPERATURE	CTT	CLOUD TOP TEMPERATURE
CONVECTION	WK CONVTN	WEAK CONVECTION (CTT GREATER THAN -25°C)
	MOD CONVTN	MODERATE CONVECTION (CTT BETWEEN -25°C TO -40°C)
	INT CONVTN	INTENSE CONVECTION (CTT BETWEEN -41°C TO -70°C)
	V INT CONVTN	VERY INTENSE CONVECTION (CTT LESS THAN -70°C)
METEOROLOGICAL SUB-DIVISIONS, STATES & UNION TERRITORIES	ARUPR	ARUNACHAL PRADESH
	BHR	BIHAR
	CHTGH	CHHATTISGARH
	COTL AP	COASTAL ANDHRA PRADESH
	COTL KRNTK	COASTAL KARNATAKA
	COTL ORS	COASTAL ORISSA
	GUJ	GUJARAT
	GWB	GANGETIC WEST BENGAL
	HARY	HARYANA
	DLH	DELHI
	HP	HIMACHAL PRADESH
	J&K	JAMMU AND KASHMIR
	JHRKND	JHARKHAND
	KER	KERALA
	KKN	KONKAN
	LKSDP	LAKSHADWEEP
	M MAHA	MADHYA MAHARASHTRA
	MAHA	MAHARASHTRA
	MANI	MANIPUR
	MEGHA	MEGHALAYA
	MIZO	MIZORAM
	MP	MADHYA PRADESH
		MRTHWD
NAGA		NAGALAND
N COTL AP		NORTH COASTAL ANDHRA PRADESH
NIK		NORTH INTERIOR KARNATAKA
ORS		ORISSA

	PJB	PUNJAB
	RAJ	RAJASTHAN
	RYLSM	RAYALASEEMA
	SAU & KUTCH	SAURASHTRA & KUTCH
	SHWB	SUB-HIMALAYAN WEST BENGAL
	SIK	SOUTH INTERIOR KARNATAKA
	SKM	SIKKIM
	TLNGN	TELANGANA
	TN	TAMIL NADU
	TRP	TRIPURA
	UP	UTTAR PRADESH
	UTRKN	UTTARAKHAND
	VID	VIDHARBHA
	SHWB	SUB HIMALAYAN WEST BENGAL
	GWB	GANGETIC WEST BENGAL
	ARSEA	ARABIAN SEA
	ILS	ISLANDS
MISCELLANEOUS	ASSW	IN ASSOCIATION WITH
	ASSTD	ASSOCIATED
	LLC	LOW LEVEL CIRCULATION
	EMBDD	EMBEDDED
	N/HOOD	NEIGHBOURHOOD
	EXT	EXTREME