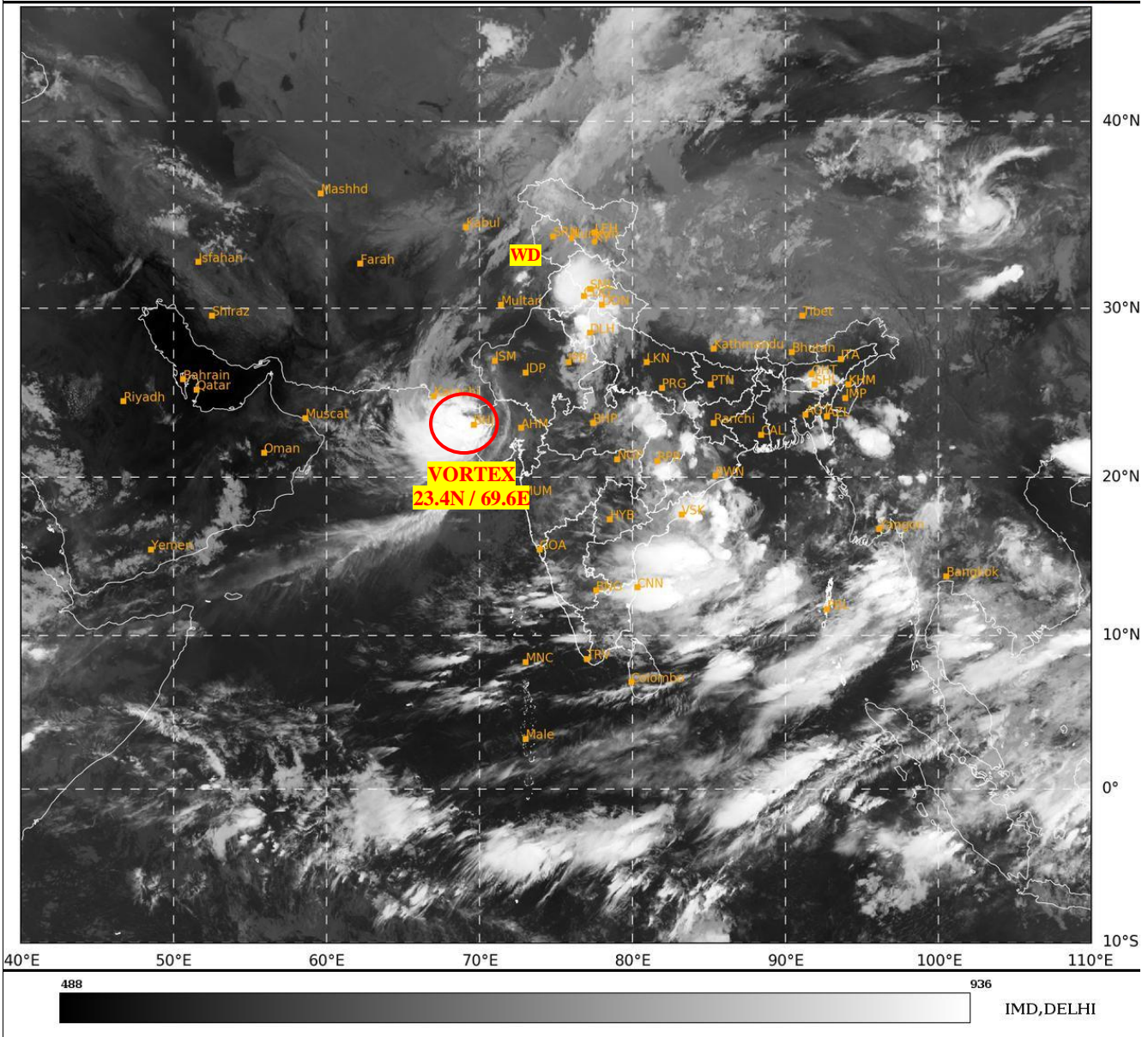




**SATELLITE BULLETIN BASED ON SATELLITE  
IMAGERIES AND PRODUCTS**  
**29.08.2024 TIME 0000 UTC**

SAT : INSAT-3DR IMG  
IMG\_TIR1 10.8 um  
LIC Mercator

29-08-2024/(0015 to 0042) GMT  
29-08-2024/(0545 to 0612) IST



TCIN50 DEMS 290015

SATELLITE BULLETIN BASED ON INSAT-3DR PIC OF 290015 UTC (.)

REGION COVERED BETWEEN LAT 50.0°N TO 35.0°S AND LONG 40.0°E TO 125.0°E (.)

**SALIENT FEATURES:-**

**VORTEX OVER KUTCH & N/HOOD:-**

VORTEX OVER KUTCH & N/HOOD CENTERED **WITHIN HALF A DEGREE OF 23.4N / 69.6E** (.)  
ASSTD SCT TO BKN LOW/MED CLOUDS WITH EMBDD INT TO V INT CONVTN OVER KUTCH  
ADJ S PAK SAURASHTRA GULF OF KUTCH NE ARSEA (MINIMUM **CTT MINUS 93 DEG CEL**)  
AND MOD TO INT CONVTN OVER W GUJ (MINIMUM **CTT MINUS 60-70 DEG CEL**) (.)

**CONVECTION OVER EAST-CENTRAL BAY & N/HOOD:-**

CONVECTION OVER EC BAY HAS SLIGHTLY INCREASED & CONCENTRATED DURING LAST 6  
HRS (.) MINIMUM **CTT MINUS 85 DEG CEL** (.)

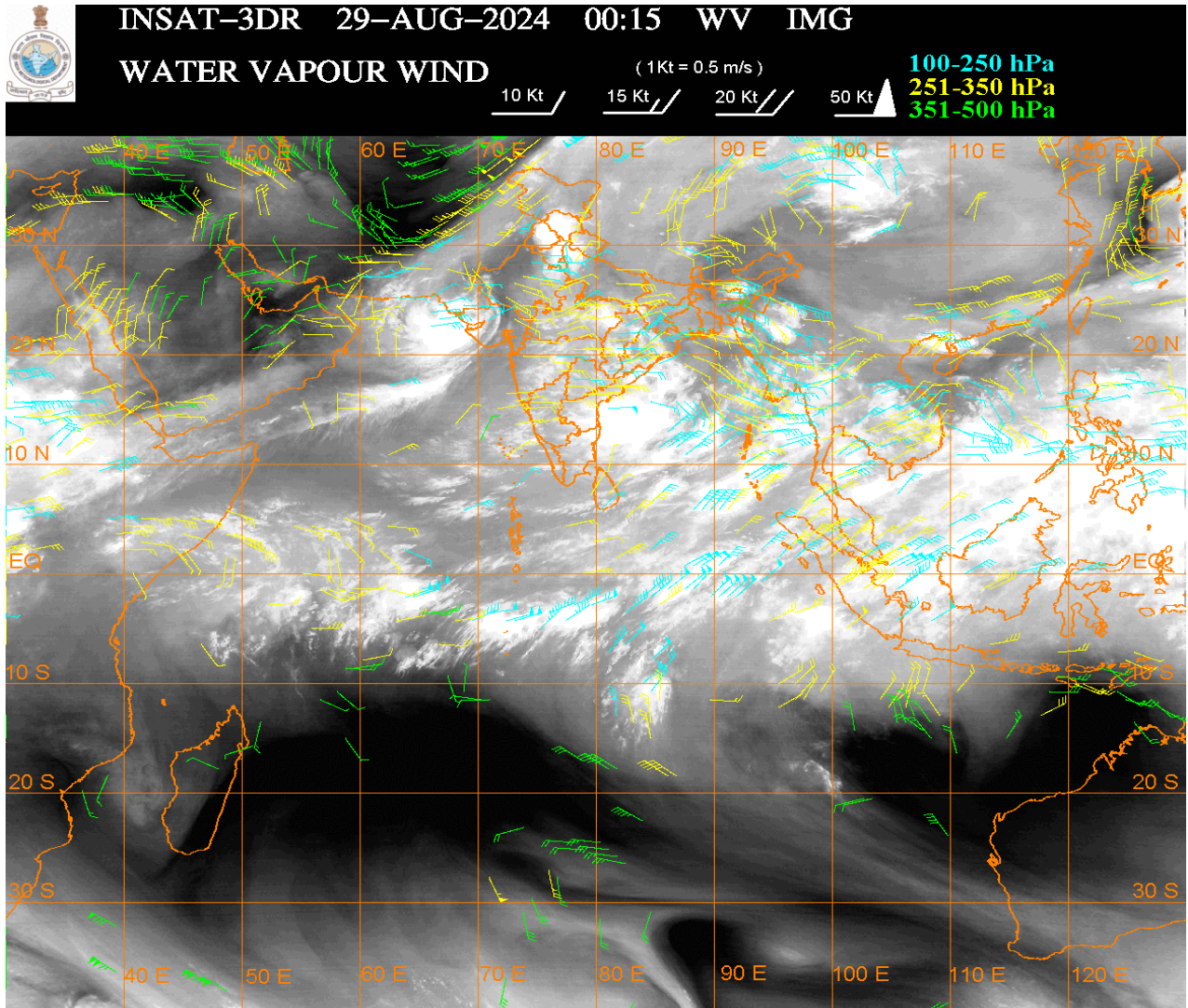
**WESTERN DISTURBANCE (WD):-**

SCT MULTILAYERED CLOUDS OVER N PAK LADAKH J&K HP UTRKND PJB HARY DLH TIBET  
ADJ CHINA IN ASSW **WD** OVER THE AREA (.)

**CONVECTIVE / THUNDERSTORM ACTIVITY:-**

**INTENSE TO VERY INTENSE CONVECTIVE / THUNDERSTORM ACTIVITY OBSERVED OVER HP UTRKND PJB HARY DLH NW UP SAU & KUTCH GULF OF KUTCH E MP CHTGH ORS COTL AP NE TN E MEGHA C ASSAM & NICOBAR ILS (MINIMUM CTT MINUS 70-93 DEG CEL) (.)**

**MODERATE TO INTENSE CONVECTIVE / THUNDERSTORM ACTIVITY OBSERVED OVER NE RAJ W GUJ COTL KRNTK KER NW JHRKND MIZO ANDAMAN ILS (MINIMUM CTT MINUS 50-70 DEG CEL) (.)**



**CLOUDS DESCRIPTION WITHIN INDIA:-**

**NORTH:-**

**SCT TO BKN LOW/MED CLOUDS WITH EMBDD INT TO V INT CONVTN OVER HP UTRKND PJB HARY DLH NW UP (.) SCT LOW/MED CLOUDS WITH EMBDD WK TO MOD CONVTN OVER LADAKH J&K S UP (.) SCT LOW/MED CLOUDS OVER NE UP (.)**

**EAST:-**

**SCT LOW/MED CLOUDS WITH EMBDD INT TO V INT CONVTN OVER CHTGH ORS E MEGHA C ASSAM (.) SCT LOW/MED CLOUDS WITH EMBDD MOD TO INT CONVTN OVER NW JHRKND MIZO AND ISOL WK TO MOD CONVTN OVER BHR SKM ARUPR (.) SCT LOW/MED CLOUDS OVER GWB SHWB REST NE STATES (.)**

**WEST:-**

**SCT TO BKN LOW/MED CLOUDS WITH EMBDD INT TO V INT CONVTN OVER SAU & KUTCH GULF OF KUTCH & E MP (.) SCT LOW/MED CLOUDS WITH EMBDD MOD TO INT CONVTN OVER NE RAJ W GUJ AND WK TO MOD CONVTN OVER REST RAJ REST GUJ W MP MAHA & GOA (.)**

**SOUTH:-**

**SCT LOW/MED CLOUDS WITH EMBDD INT TO INT CONVTN OVER COTL AP NE TN & NICOBAR ILS (.) SCT LOW/MED CLOUDS WITH EMBDD MOD TO INT CONVTN OVER RYLSM COTL KRNTK SIK KER LKSDP ILS ANDAMAN ILS AND WK TO MOD CONVTN OVER TLNGN NIK REST TN (.)**

**ARABIAN SEA:-**

**SCT TO BKN LOW/MED CLOUDS WITH EMBDD INT TO V INT CONVTN OVER NE ARSEA & GULF OF KUTCH (.) SCT LOW/MED CLOUDS WITH EMBDD MOD TO INT CONVTN OVER CENTRAL & SE ARSEA AND ISOL WK TO MOD CONVTN OVER REST ARSEA (.)**

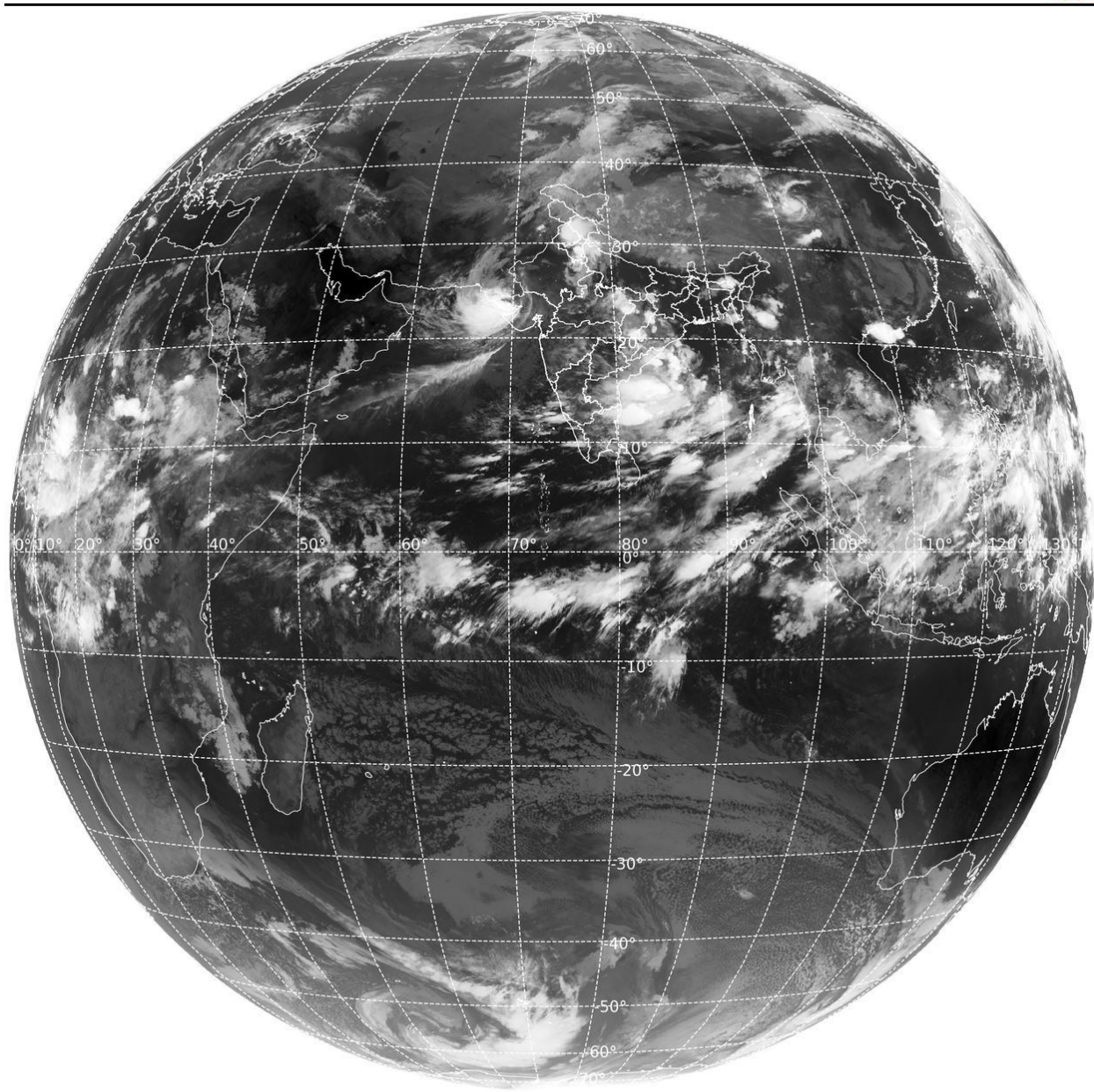
**BAY OF BENGAL & ANDAMAN SEA:-**

**SCT TO BKN LOW/MED CLOUDS WITH EMBDD INT TO V INT CONVTN OVER CENTRAL & SOUTH BAY ANDAMAN SEA (.) SCT LOW/MED CLOUDS WITH EMBDD ISOL MOD TO INT CONVTN OVER NORTH BAY (.)**

**CLOUDS DESCRIPTION OUTSIDE INDIA:-**

SAT : INSAT-3DR IMG  
Thermal Infrared1 Count 10.8 um  
LIB FULL DISK

29-08-2024/(0015 to 0042) GMT  
29-08-2024/(0545 to 0612) IST



488

976

IMD,DELHI

**SCT LOW/MED CLOUDS WITH EMBDD MOD TO INT CONVTN OVER SRI LANKA PALK STR GULF OF MANNAR MALDIVES PAK TIBET CHINA MYANMAR THAILAND GULF OF THAILAND CAMBODIA LAOS VIETNAM GULF OF TONKIN SUMATRA STR OF MALACCA MALAYSIA BORNEO SOUTH CHINA SEA JAVA ILS & SEA CELEBES ILS & SEA PHILIPPINES SULU SEA AND OVER INDIAN OCEAN BET LAT 5.0N TO 11.0S LONG 45.0E TO 100.0E (.)**

**TOO 29/0720 HRS IST=**

**NNNN**

**LEGEND:-**

<b>REGION</b>	<b>NORTH</b>	<b>J&amp;K HP PJB HARY DLH UP UTRKND</b>	
	<b>EAST</b>	<b>BHR JHRKND CHTGH OR WB SKM NORTH- EAST STATES</b>	
	<b>WEST</b>	<b>RAJ MP GUJ MAHA GOA</b>	
	<b>SOUTH</b>	<b>TLNGN AP KRNTK KER TN LKSDP ANDAMAN &amp; NICOBAR ILS</b>	
<b>CLOUD DISTRIBUTION</b>	<b>ISOL</b>	<b>ISOLATED (LESS THAN 25%)</b>	
	<b>SCT</b>	<b>SCATTERED (25 TO 50%)</b>	
	<b>BKN</b>	<b>BROKEN (51 TO 75%)</b>	
	<b>SLD</b>	<b>SOLID (GREATER THAN 75%)</b>	
<b>CLOUDS TOP TEMPERATURE</b>	<b>CTT</b>	<b>CLOUD TOP TEMPERATURE</b>	
<b>CONVECTION</b>	<b>WK CONV TN</b>	<b>WEAK CONVECTION (CTT GREATER THAN -25°C)</b>	
	<b>MOD CONV TN</b>	<b>MODERATE CONVECTION (CTT BETWEEN -25°C TO -40°C)</b>	
	<b>INT CONV TN</b>	<b>INTENSE CONVECTION (CTT BETWEEN -41°C TO -70°C)</b>	
	<b>V INT CONV TN</b>	<b>VERY INTENSE CONVECTION (CTT LESS THAN -70°C)</b>	
<b>METEOROLOGICAL SUB- DIVISIONS, STATES &amp; UNION TERITORIES</b>	<b>ARUPR</b>	<b>ARUNACHAL PRADESH</b>	
	<b>BHR</b>	<b>BIHAR</b>	
	<b>CHTGH</b>	<b>CHHATTISGARH</b>	
	<b>COTL AP</b>	<b>COASTAL ANDHRA PRADESH</b>	
	<b>COTL KRNTK</b>	<b>COASTAL KARNATAKA</b>	
	<b>COTL ORS</b>	<b>COASTAL ORISSA</b>	
	<b>GUJ</b>	<b>GUJARAT</b>	
	<b>GWB</b>	<b>GANGETIC WEST BENGAL</b>	
	<b>HARY</b>	<b>HARYANA</b>	
	<b>DLH</b>	<b>DELHI</b>	
	<b>HP</b>	<b>HIMACHAL PRADESH</b>	
	<b>J&amp;K</b>	<b>JAMMU AND KASHMIR</b>	
	<b>JHRKND</b>	<b>JHARKHAND</b>	
	<b>KER</b>	<b>KERALA</b>	
	<b>KKN</b>	<b>KONKAN</b>	
	<b>LKSDP</b>	<b>LAKSHADWEEP</b>	
	<b>M MAHA</b>	<b>MADHYA MAHARASHTRA</b>	
	<b>MAHA</b>	<b>MAHARASHTRA</b>	
	<b>MANI</b>	<b>MANIPUR</b>	
	<b>MEGHA</b>	<b>MEGHALAYA</b>	
	<b>MIZO</b>	<b>MIZORAM</b>	
	<b>MP</b>	<b>MADHYA PRADESH</b>	
		<b>MRTHWD</b>	<b>MARATHWADA</b>
		<b>NAGA</b>	<b>NAGALAND</b>
<b>N COTL AP</b>		<b>NORTH COASTAL ANDHRA PRADESH</b>	
<b>NIK</b>		<b>NORTH INTERIOR KARNATAKA</b>	

	<b>ORS</b>	<b>ORISSA</b>
	<b>PJB</b>	<b>PUNJAB</b>
	<b>RAJ</b>	<b>RAJASTHAN</b>
	<b>RYLSM</b>	<b>RAYALASEEMA</b>
	<b>SAU &amp; KUTCH</b>	<b>SAURASHTRA &amp; KUTCH</b>
	<b>SHWB</b>	<b>SUB-HIMALAYAN WEST BENGAL</b>
	<b>SIK</b>	<b>SOUTH INTERIOR KARNATAKA</b>
	<b>SKM</b>	<b>SIKKIM</b>
	<b>TLNGN</b>	<b>TELANGANA</b>
	<b>TN</b>	<b>TAMIL NADU</b>
	<b>TRP</b>	<b>TRIPURA</b>
	<b>UP</b>	<b>UTTAR PRADESH</b>
	<b>UTRKND</b>	<b>UTTARAKHAND</b>
	<b>VID</b>	<b>VIDHARBHA</b>
	<b>SHWB</b>	<b>SUB HIMALAYAN WEST BENGAL</b>
	<b>GWB</b>	<b>GANGETIC WEST BENGAL</b>
	<b>ARSEA</b>	<b>ARABIAN SEA</b>
	<b>ILS</b>	<b>ISLANDS</b>
<b>MISCELLANEOUS</b>	<b>ASSW</b>	<b>IN ASSOCIATION WITH</b>
	<b>ASSTD</b>	<b>ASSOCIATED</b>
	<b>LLC</b>	<b>LOW LEVEL CIRCULATION</b>
	<b>EMBDD</b>	<b>EMBEDDED</b>
	<b>N/HOOD</b>	<b>NEIGHBOURHOOD</b>
	<b>EXT</b>	<b>EXTREME</b>