

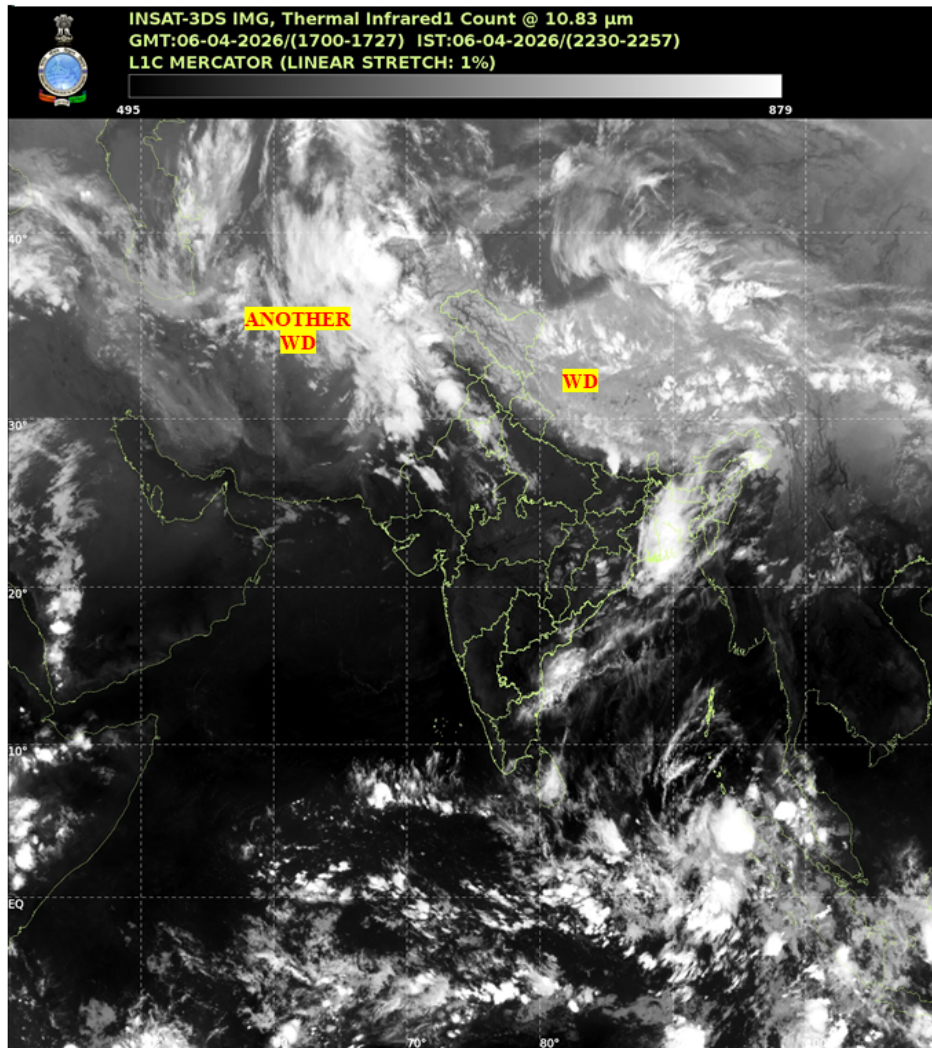


भारत मौसम विज्ञान विभाग  
पृथ्वी विज्ञान मंत्रालय  
India Meteorological Department  
Ministry of Earth Sciences



**SATELLITE BULLETIN BASED ON SATELLITE IMAGERIES AND PRODUCTS**

Date: 2026-04-06 Time: 18:00:00 UTC



TCIN50 DEMS 061800

SATELLITE BULLETIN BASED ON INSAT-3DS PIC OF 061800 UTC (.)

REGION COVERED BETWEEN LAT 50.0°N TO 35.0°S AND LONG 40.0°E TO 125.0°E (.)

**SALIENT FEATURES:**

**WESTERN DISTURBANCE (WD):-**

SCT MULTILAYERED CLOUDS OVER E LADAKH HP UTRKND NEPAL TIBET ADJ CHINA IN ASSW WD OVER THE AREA (.)

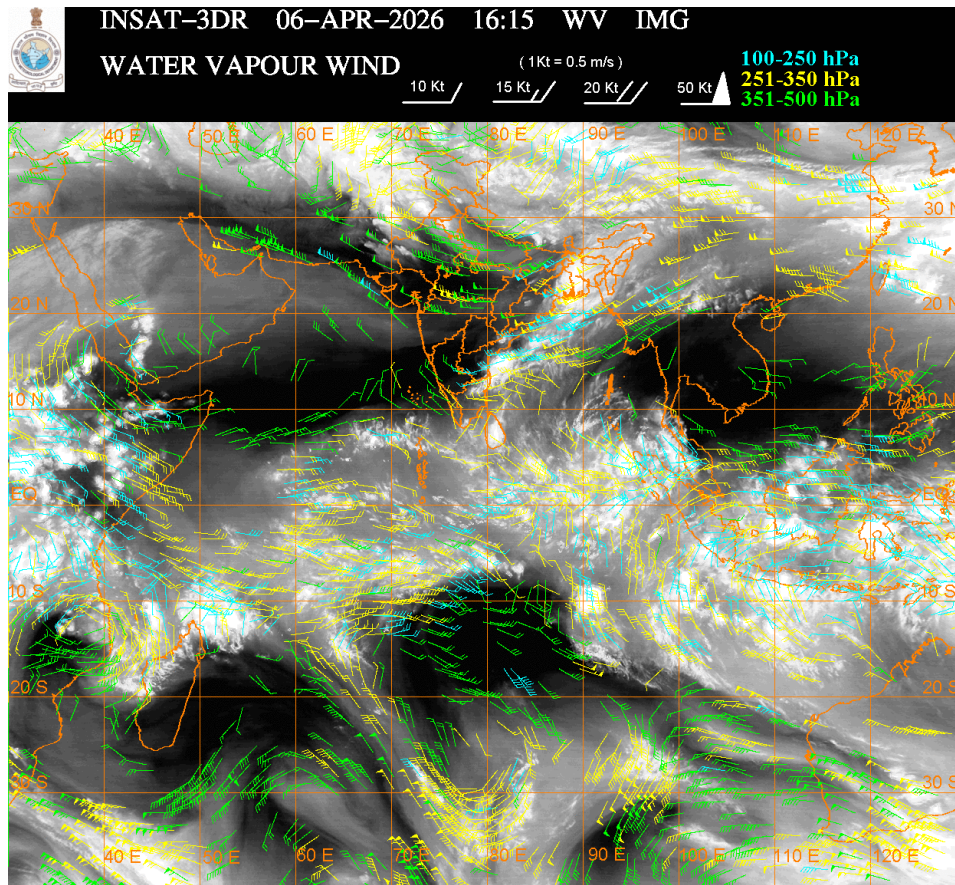
SCT TO BKN MULTILAYERED CLOUDS OVER AFGAN PAK W LADAKH J&K PJB HADY N RAJ W UP

AND N/HOOD IN ASSW ANOTHER WD OVER THE AREA (.)

**CONVECTIVE / THUNDERSTORM ACTIVITY:-**

**INTENSE TO VERY INTENSE CONVECTIVE / THUNDERSTORM ACTIVITY OBSERVED OVER GWB MEGHA TRP ASSAM ARUPR (MINIMUM CTT MINUS 70-90 DEGREE CEL) (.)**

**MODERATE TO INTENSE CONVECTIVE / THUNDERSTORM ACTIVITY OBSERVED OVER PJB HARY SW UP DLH RAJ KER TN ORS COTL AP ARUPR (MINIMUM CTT MINUS 40-60 DEGREE CEL) (.)**



**CLOUD DESCRIPTION WITHIN INDIA:**

**NORTH:**

**SCT LOW/MED CLOUDS WITH EMBDD MOD TO INT CONVTN OVER PJB HARY SW UP DLH AND WK TO MOD CONVTN OVER LADAKH J&K HP UTRKND (.) SCT LOW/MED CLOUDS OVER REST UP (.)**

**EAST:**

**SCT TO BKN LOW/MED CLOUDS WITH EMBDD INT TO V INT CONVTN OVER GWB ASSAM MEGHA TRP ARUPR (.) SCT TO BKN LOW/MED CLOUDS WITH EMBDD MOD TO INT CONVTN OVER SHWB N ORS & BD AND ISOL WK TO MOD CONVTN OVER REST ORS CHTGH JHRKND BHR SKM & REST NE STATES (.)**

**WEST:**

**SCT LOW/MED CLOUDS WITH EMBDD MOD TO INT CONVTN OVER RAJ AND ISOL WK TO MOD CONVTN OVER N MP (.) ISOL TO SCT LOW/MED CLOUDS OVER GUJ REST MP (.)**

**SOUTH:**

**SCT LOW/MED CLOUDS WITH EMBDD ISOL WK TO MOD CONVTN OVER COTL AP N TN ANDAMAN & NICOBAR ILS AREA (.) SCT LOW/MED CLOUDS WITH EMBDD WK TO MOD CONVTN OVER RYLSPM REST TN TLNGN KRNTK LKSDP ILS AREA (.)**

**ARABIAN SEA:**

**SCT LOW/MED CLOUDS WITH EMBDD MOD TO INT CONVTN OVER SOUTH ARSEA SOUTH OF LAT 8.0N COMORIN AREA AND ISOL WK TO MOD CONVTN OVER NORTH ARSEA (.)**

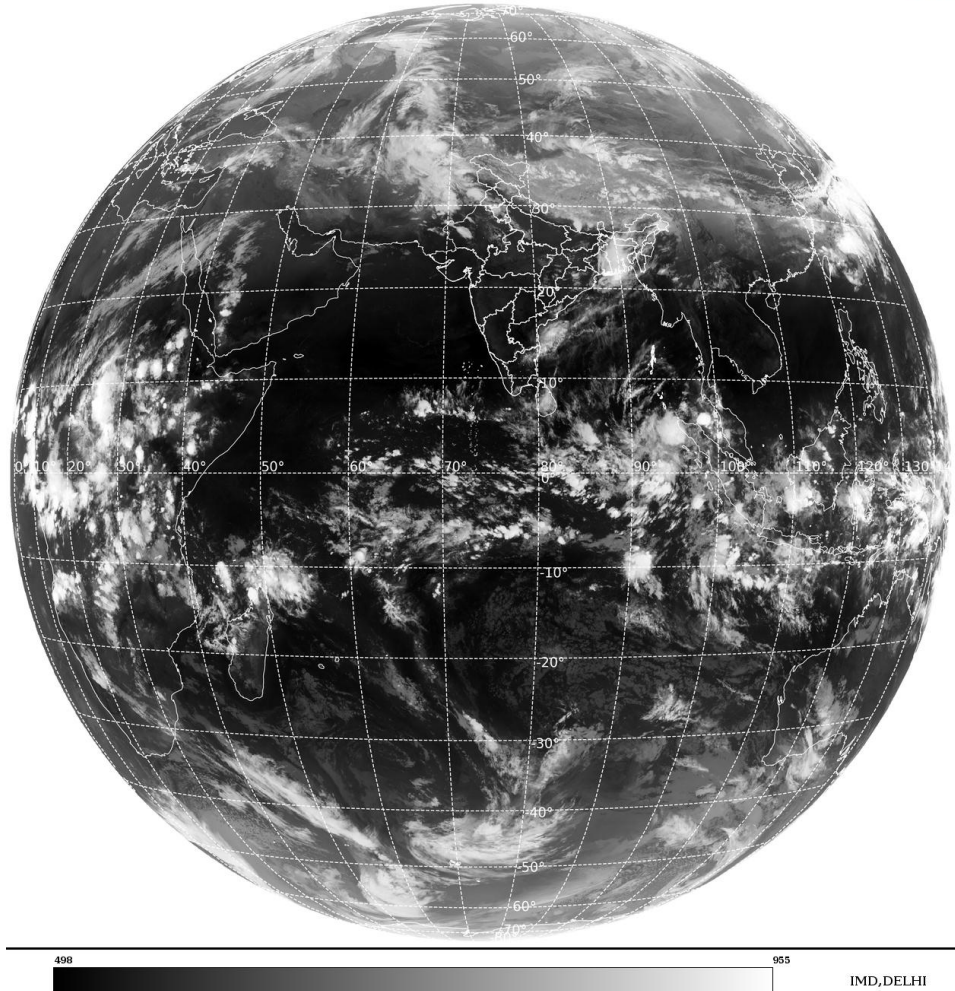
**BAY OF BENGAL & ANDAMAN SEA:**

**SCT TO BKN LOW/MED CLOUDS WITH EMBDD INT TO V INT CONVTN OVER NW & WC BAY OFF COTL AP ORS COASTS (.) SCT LOW/MED CLOUDS WITH EMBDD MOD TO INT CONVTN OVER SOUTH BAY SOUTH OF LAT 7.0N & ADJ EQUATORIAL INDIAN OCEAN SOUTH ANDAMAN SEA AND ISOL WK TO MOD CONVTN OVER REST BAY (.)**

**CLOUD DESCRIPTION OUTSIDE INDIA:**

SAT : INSAT-3DR IMG  
Thermal Infrared1 Count 10.8 um  
LIB FULL DISK

06-04-2026/(1715 to 1742) GMT  
06-04-2026/(2245 to 2312) IST



**SCT LOW/MED CLOUDS WITH EMBDD MOD TO INT CONVTN OVER MALDIVES PAK NEPAL BHUTAN TIBET CHINA YELLOW SEA EAST CHINA SEA TAIWAN EXTREME NORTH MYANMAR SUMATRA STR OF MALACCA MALAYSIA BORNEO SOUTH CHINA SEA JAVA ILS & SEA CELEBES ILS & SEA NORTH MADAGASCAR NORTH MOZAMBIQUE CHANNEL AND OVER INDIAN OCEAN BET LAT 5.0N TO 20.0S LONG 40.0E TO 120.0E AND BET LAT 20.0S TO LAT 35.0S LONG 60.0E TO 90.0E (.)**

**T00 07/0030 HRS IST**

**NNNN**

**LEGEND**

**REGION**

<b>NORTH</b>	<b>J&amp;K HP UTRKND PJB HARY DLH UP</b>
<b>EAST</b>	<b>BHR JHRKND CHTGH ORS WB SKM NORTH-EAST STATES</b>
<b>WEST</b>	<b>RAJ MP GUJ MAHA GOA</b>
<b>SOUTH</b>	<b>TLNGN AP KRNTK KER TN LKSDP ANDAMAN &amp; NICOBAR ILS</b>
<b>CLOUD DISTRIBUTION</b>	
<b>ISOL</b>	<b>ISOLATED (LESS THAN 25%)</b>
<b>SCT</b>	<b>SCATTERED (25 TO 50%)</b>
<b>BKN</b>	<b>BROKEN (51 TO 75%)</b>
<b>SLD</b>	<b>SOLID (GREATER THAN 75%)</b>
<b>CLOUDS TOP TEMPERATURE</b>	
<b>CTT</b>	<b>CLOUD TOP TEMPERATURE</b>
<b>CONVECTION</b>	
<b>WK CONVTN</b>	<b>WEAK CONVECTION (CTT GREATER THAN -25°C)</b>
<b>MOD CONVTN</b>	<b>MODERATE CONVECTION (CTT BETWEEN -25°C TO -40°C)</b>
<b>INT CONVTN</b>	<b>INTENSE CONVECTION (CTT BETWEEN -41°C TO -70°C)</b>
<b>V INT CONVTN</b>	<b>VERY INTENSE CONVECTION (CTT LESS THAN -70°C)</b>
<b>METEOROLOGICAL SUB-DIVISIONS, STATES &amp; UNION TERRITORIES</b>	
<b>J&amp;K</b>	<b>JAMMU AND KASHMIR</b>
<b>HP</b>	<b>HIMACHAL PRADESH</b>
<b>UTRKND</b>	<b>UTTARAKHAND</b>
<b>PJB</b>	<b>PUNJAB</b>
<b>HARY</b>	<b>HARYANA</b>
<b>DLH</b>	<b>DELHI</b>
<b>BHR</b>	<b>BIHAR</b>
<b>JHRKND</b>	<b>JHARKHAND</b>
<b>CHTGH</b>	<b>CHHATTISGARH</b>
<b>ORS</b>	<b>ORISSA</b>
<b>GWB</b>	<b>GANGETIC WEST BENGAL</b>
<b>SHWB</b>	<b>SUB-HIMALAYAN WEST BENGAL</b>
<b>SKM</b>	<b>SIKKIM</b>
<b>ARUPR</b>	<b>ARUNACHAL PRADESH</b>
<b>ASSAM</b>	<b>ASSAM</b>
<b>MEGHA</b>	<b>MEGHALAYA</b>
<b>MANI</b>	<b>MANIPUR</b>

<b>MIZO</b>	<b>MIZORAM</b>
<b>TRP</b>	<b>TRIPURA</b>
<b>RAJ</b>	<b>RAJASTHAN</b>
<b>MP</b>	<b>MADHYA PRADESH</b>
<b>GUJ</b>	<b>GUJARAT</b>
<b>SAU &amp; KUTCH</b>	<b>SAURASHTRA &amp; KUTCH</b>
<b>MAHA</b>	<b>MAHARASHTRA</b>
<b>M MAHA</b>	<b>MADHYA MAHARASHTRA</b>
<b>MRTHWD</b>	<b>MARATHWADA</b>
<b>VID</b>	<b>VIDARBHA</b>
<b>KKN</b>	<b>KONKAN</b>
<b>TLNGN</b>	<b>TELANGANA</b>
<b>RYLSM</b>	<b>RAYALSEEMA</b>
<b>COTL AP</b>	<b>COASTAL ANDHRA PRADESH</b>
<b>NIK</b>	<b>NORTH INTERIOR KARNATAKA</b>
<b>SIK</b>	<b>SOUTH INTERIOR KARNATAKA</b>
<b>COTL KRNTK</b>	<b>COASTAL KARNATAKA</b>
<b>KER</b>	<b>KERALA</b>
<b>TN</b>	<b>TAMILNADU</b>
<b>LKSDP</b>	<b>LAKSHADWEEP</b>
<b>ILS</b>	<b>ISLANDS</b>
<b>ARSEA</b>	<b>ARABIAN SEA</b>
<b>MISCELLANEOUS</b>	
<b>ASSW</b>	<b>IN ASSOCIATION WITH</b>
<b>ASSTD</b>	<b>ASSOCIATED</b>
<b>LLC</b>	<b>LOW LEVEL CIRCULATION</b>
<b>EMBDD</b>	<b>EMBEDDED</b>
<b>N/HOOD</b>	<b>NEIGHBOURHOOD</b>
<b>EXT</b>	<b>EXTREME</b>