



भारत मौसम विज्ञान विभाग
पृथ्वी विज्ञान मंत्रालय
India Meteorological Department
Ministry of Earth Sciences

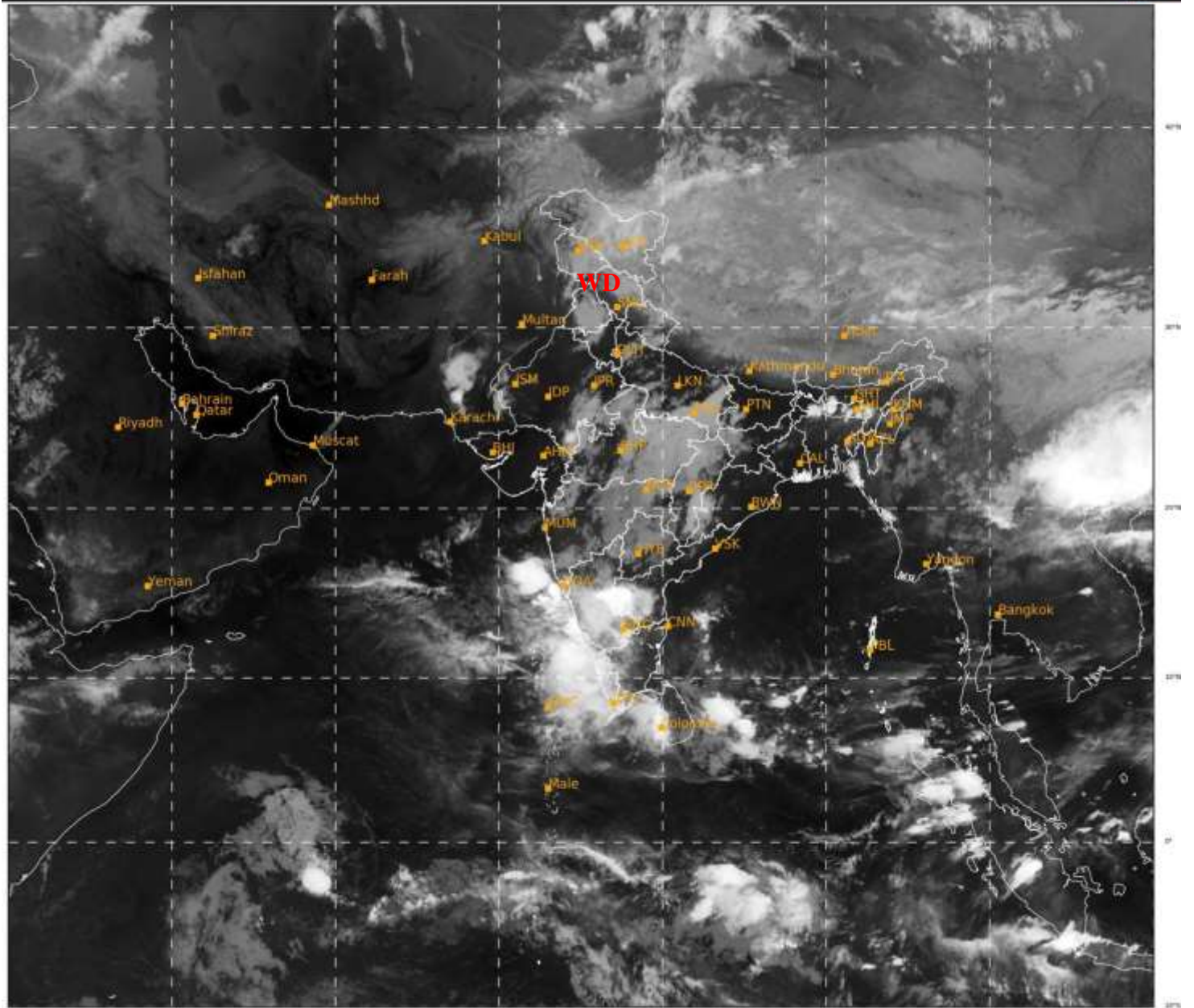


**SATELLITE BULLETIN BASED ON SATELLITE IMAGERIES
AND PRODUCTS**

03.06.2021 TIME 2100 UTC

SAT : INSAT-3D IMG
IMG_TIR1 10.8 um
LIC Mercator

03-06-2021/(2100 to 2126) GMT
04-06-2021/(0230 to 0256) IST



490

945

IMD, DELHI

TCIN50 DEMS 032100

SATELLITE BULLETIN BASED ON INSAT-3D PIC OF 032100 UTC (.)

REGION COVERED BETWEEN LAT 50.0°N TO 30.0°S AND LONG 40.0°E TO 125.0°E (.)

SALIENT FEATURES:-

WESTERN DISTURBANCE (WD):-

SCT MULTILAYERED CLOUDS OVER J&K LADAKH HP PJB UTRKND TIBET CHINA IN ASSW
WD OVER THE AREA (.)



INSAT-3D 03-JUN-2021 21:00 WV IMG

WATER VAPOUR WIND

(1Kt = 0.5 m/s)

10 Kt

15 Kt

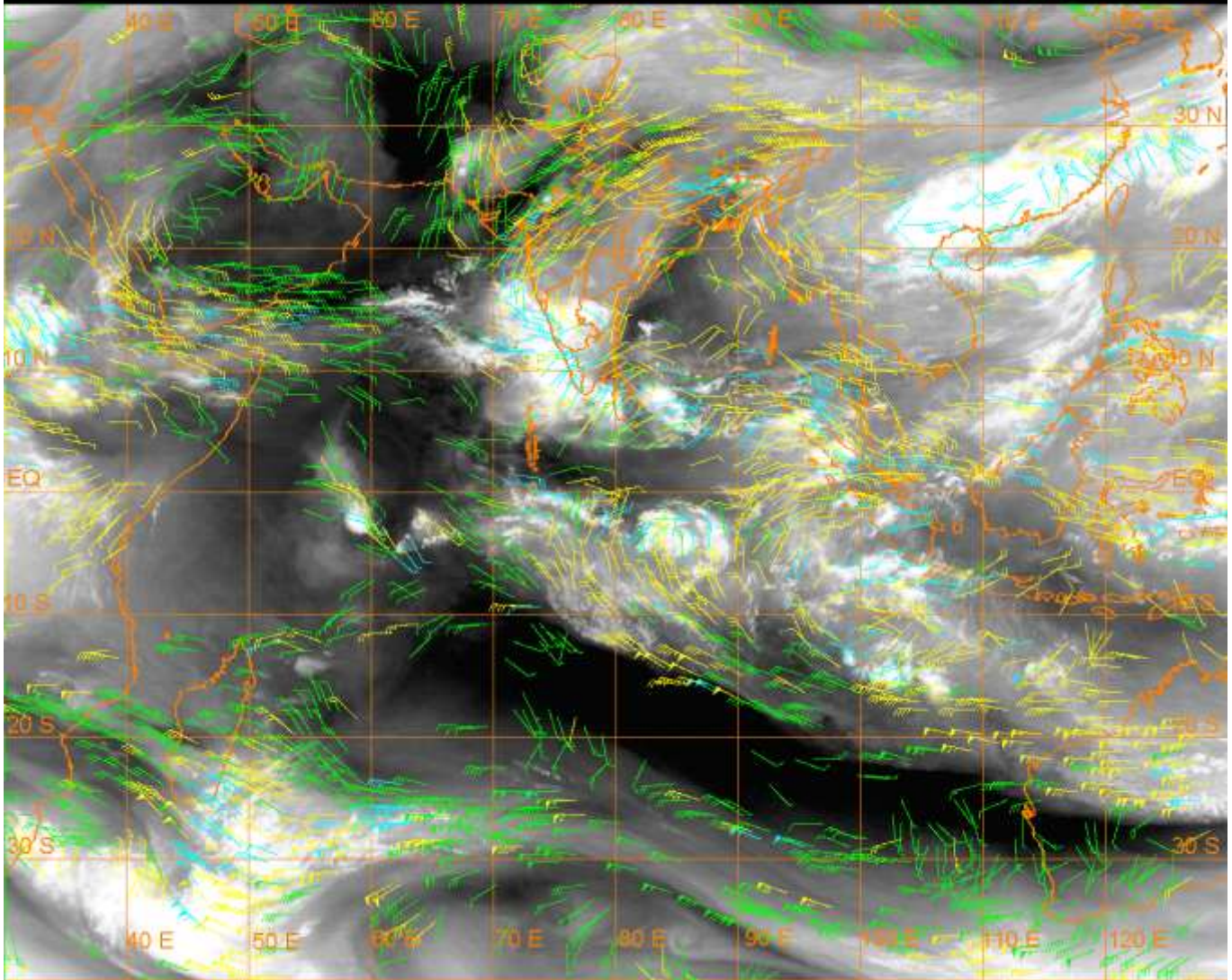
20 Kt

50 Kt

100-250 hPa

251-350 hPa

351-500 hPa



CLOUDS DESCRIPTION WITHIN INDIA:-

NORTH:-

SCT LOW/MED CLOUDS WITH EMBDD MOD TO INT CONVTN OVER N LADAKH (.) SCT LOW/MED CLOUDS WITH EMBDD WK TO MOD CONVTN OVER J&K REST LADAKH HP UTRKND PJB NW HARY UP (.) SCT LOW/MED CLOUDS OVER SE HARY (.)

EAST:-

SCT LOW/MED CLOUDS WITH EMBDD INT TO V INT CONVTN OVER W MEGHA AND MOD TO INT CONVTN OVER E MEGHA W & C ASSAM SW ARUPR & NW BD (.) SCT LOW/MED CLOUDS WITH EMBDD WK TO MOD CONVTN OVER W BHR NW JHRKND CHTGH SW ORS NW GWB SKM REST ARUPR REST ASSAM (.) SCT LOW/MED CLOUDS OVER EXT SE BHR REST JHRKND N ORS REST GWB REST NE STATES (.)

WEST:-

SCT LOW/MED CLOUDS WITH EMBDD MOD TO INT CONVTN OVER SE RAJ (.) SCT LOW/MED CLOUDS WITH EMBDD WK TO MOD CONVTN OVER REST RAJ MP E GUJ MAHA GOA (.)

SOUTH:-

SCT LOW/MED CLOUDS WITH EMBDD INT TO V INT CONVTN OVER S COTL KRNTK N SIK N RYLSM N KER (.) SCT LOW/MED CLOUDS WITH EMBDD MOD TO INT CONVTN OVER S SIK S RYLSM S KER W TN LKSDP (.) SCT LOW/MED CLOUDS WITH EMBDD WK TO MOD CONVTN OVER REST KRNTK TLNGN (.) SCT LOW/MED CLOUDS OVER COTL AP REST TN ANDAMAN & NICOBAR ILS (.)

ARABIAN SEA:-

SCT LOW/MED CLOUDS WITH EMBDD INT TO V INT CONVTN OVER EC ARSEA OFF S KONKAN-GOA-KRNTK COASTS & SE ARSEA OFF KER COAST (.) SCT LOW/MED CLOUDS WITH EMBDD MOD TO INT CONVTN OVER REST C ARSEA & COMORIN (.)

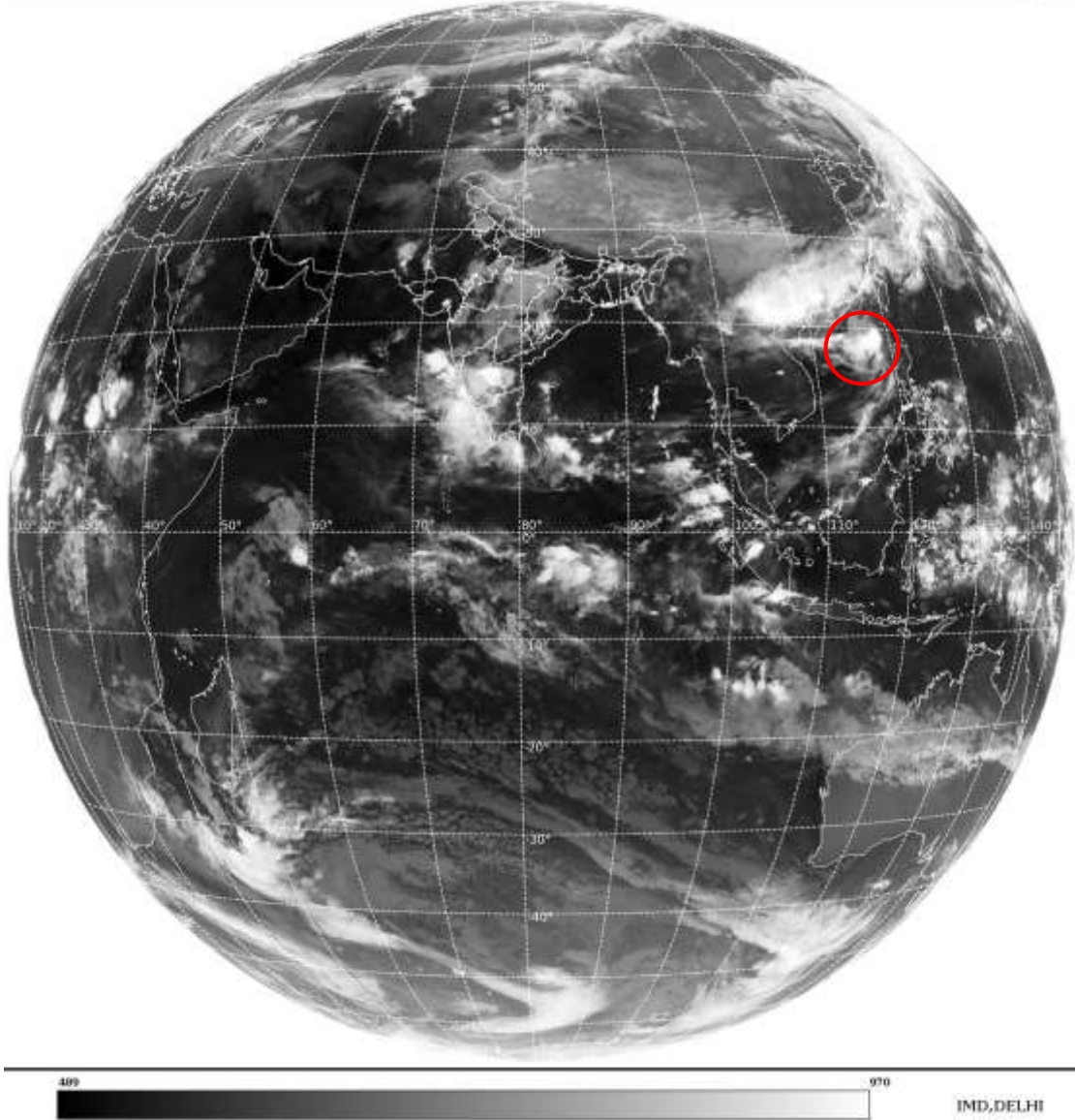
BAY OF BENGAL & ANDAMAN SEA:-

SCT LOW/MED CLOUDS WITH EMBDD INT TO V INT CONVTN OVER SW BAY (.) SCT LOW/MED CLOUDS WITH EMBDD MOD TO INT CONVTN OVER WC & SE BAY AND S ANDAMAN SEA (.)

CLOUDS DESCRIPTION OUTSIDE INDIA:-

SAT : INSAT-3D IMG
Thermal Infrared1 Count 10.8 um
L1B FULL DISK

03-06-2021/(2100 to 2126) GMT
04-06-2021/(0230 to 0256) IST



VORTEX (CHOI-WAN) OVER SOUTH CHINA SEA:-

VORTEX (**CHOI-WAN**) OVER SOUTH CHINA SEA CENTERED NEAR **19.9N/118.5E** (.) INTENSITY **T2.0/2.5** (.) ASSTD BKN LOW/MED CLOUDS WITH EMBDD INT TO V INT CONVTN OVER AREA BET LAT 16.0N TO 20.0N AND LONG 114.0E TO 119.0E (.)

SCT LOW/MED CLOUDS WITH EMBDD MOD TO INT CONVTN OVER SRI LANKA GULF OF MANNAR N MALDIVES TIBET CHINA YELLOW SEA E CHINA SEA MYANMAR NW THAILAND GULF OF THAILAND LAOS N VIETNAM GULF OF TONKIN HAINAN SUMATRA ADJ W COAST STR OF MALACCA MALAYSIA S CHINA SEA JAVA ILS CELEBES ILS & SEA PHILIPPINES SULU SEA S MADAGASCAR S MOZAMBIQUE CHANNEL AND OVER INDIAN OCEAN BET EQ TO 16.0S LONG 58.0E TO 107.0E (.)

TOO04/0350EF=

NNNN

LEGEND:-

REGION	NORTH	J&K HP PJB HARY DLH UP UTRKND
	EAST	BHR JHRKND CHTGH ORS WB SKMNORTH-EAST STATES
	WEST	RAJ MP GUJ MAHA GOA
	SOUTH	TLNGN AP KRNTK KER TN LKSDP ANDAMAN & NICOBAR ILS

CLOUD DISTRIBUTION	ISOL	ISOLATED (LESS THAN 25%)
	SCT	SCATTERED (25 TO 50%)
	BKN	BROKEN (51 TO 75%)
	SLD	SOLID (GREATER THAN 75%)
CLOUDS TOP TEMPERATURE	CTT	CLOUD TOP TEMPERATURE
CONVECTION	WK CONVTN	WEAK CONVECTION (CTT GREATER THAN -25°C)
	MOD CONVTN	MODERATE CONVECTION (CTT BETWEEN -25°C TO -40°C)
	INT CONVTN	INTENSE CONVECTION (CTT BETWEEN -41°C TO -70°C)
	V INT CONVTN	VERY INTENSE CONVECTION (CTT LESS THAN -70°C)
METEOROLOGICAL SUB-DIVISIONS, STATES & UNION TERRITORIES	ARUPR	ARUNACHAL PRADESH
	BHR	BIHAR
	CHTGH	CHHATTISGARH
	COTL AP	COASTAL ANDHRA PRADESH
	COTL KRNTK	COASTAL KARNATAKA
	COTL ORS	COASTAL ORISSA
	GUJ	GUJARAT
	GWB	GANGETIC WEST BENGAL
	HARY	HARYANA
	DLH	DELHI
	HP	HIMACHAL PRADESH
	J&K	JAMMU AND KASHMIR
	JHRKND	JHARKHAND
	KER	KERALA
	KKN	KONKAN
	LKSDP	LAKSHADWEEP
	M MAHA	MADHYA MAHARASHTRA
	MAHA	MAHARASHTRA
	MANI	MANIPUR
	MEGHA	MEGHALAYA
MIZO	MIZORAM	
MP	MADHYA PRADESH	

	MRTHWD	MARATHWADA
	NAGA	NAGALAND
	N COTL AP	NORTH COASTAL ANDHRA PRADESH
	NIK	NORTH INTERIOR KARNATAKA
	ORS	ORISSA
	PJB	PUNJAB
	RAJ	RAJASTHAN
	RYLSM	RAYALASEEMA
	SAU & KUTCH	SAURASHTRA & KUTCH
	SHWB	SUB-HIMALAYAN WEST BENGAL
	SIK	SOUTH INTERIOR KARNATAKA
	SKM	SIKKIM
	TLNGN	TELANGANA
	TN	TAMIL NADU
	TRP	TRIPURA
	UP	UTTAR PRADESH
	UTRKN D	UTTARAKHAND
	VID	VIDHARBHA
	SHWB	SUB HIMALAYAN WEST BENGAL
	GWB	GANGETIC WEST BENGAL
	ARSEA	ARABIAN SEA
	ILS	ISLANDS
MISCELLANEOUS	ASSW	IN ASSOCIATION WITH
	ASSTD	ASSOCIATED
	LLC	LOW LEVEL CIRCULATION
	EMBDD	EMBEDDED
	N/HOOD	NEIGHBOURHOOD
	EXT	EXTREME