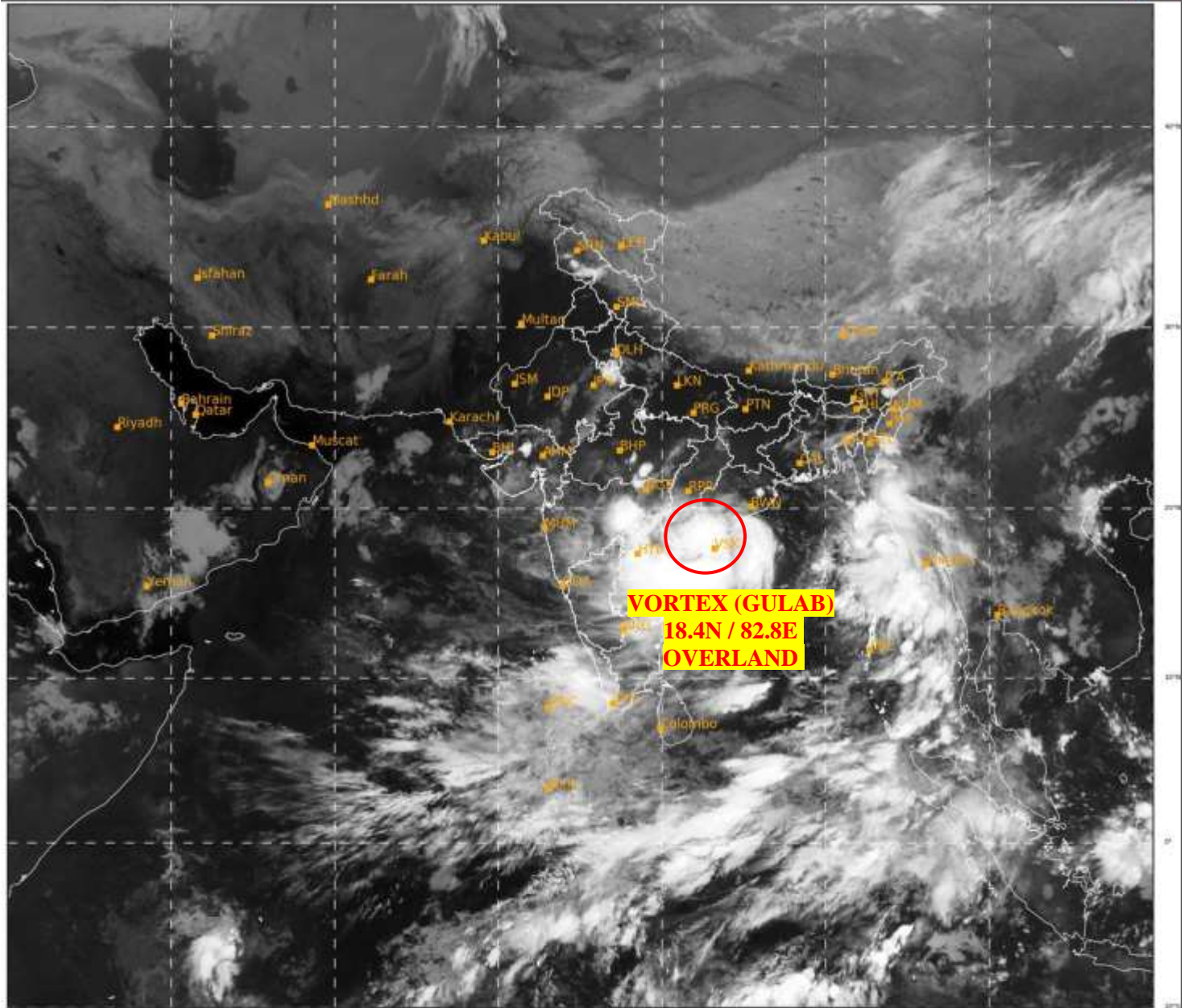




SATELLITE BULLETIN BASED ON SATELLITE
IMAGERIES AND PRODUCTS
27.09.2021 TIME 0000 UTC

SAT : INSAT-3D IMG
IMG_TIR1 10.8 um
LIC Mercator

27-09-2021/(0000 to 0026) GMT
27-09-2021/(0530 to 0556) IST



VORTEX (GULAB)
18.4N / 82.8E
OVERLAND

517

944

IMD, DELHI

TCIN50 DEMS 270000

SATELLITE BULLETIN BASED ON INSAT-3D PIC OF 270000 UTC (.)

REGION COVERED BETWEEN LAT 50.0°N TO 30.0°S AND LONG 40.0°E TO 125.0°E (.)

SALIENT FEATURES:-

VORTEX (GULAB) OVER NORTH COASTAL AP ADJ SW ORS & N/HOOD:-

VORTEX (**GULAB**) OVER NORTH COASTAL AP ADJ SW ORS CENTERED WITHIN HALF A DEGREE OF **18.4N / 82.8E** (.) **OVERLAND** (.) ASSTD BKN LOW/MED CLOUDS WITH EMBDD INT TO V INT CONVTN OVER COTL AP S ORS ADJ S CHTGH TLNGN AND OVER WC BAY BET LAT 14.0N TO 19.0N LONG 80.0E TO 86.5E (.) MINIMUM CTT MINUS **93** DEG C (.)



INSAT-3D 27-SEP-2021 00:00 WV IMG

WATER VAPOUR WIND

(1Kt = 0.5 m/s)

10 Kt

15 Kt

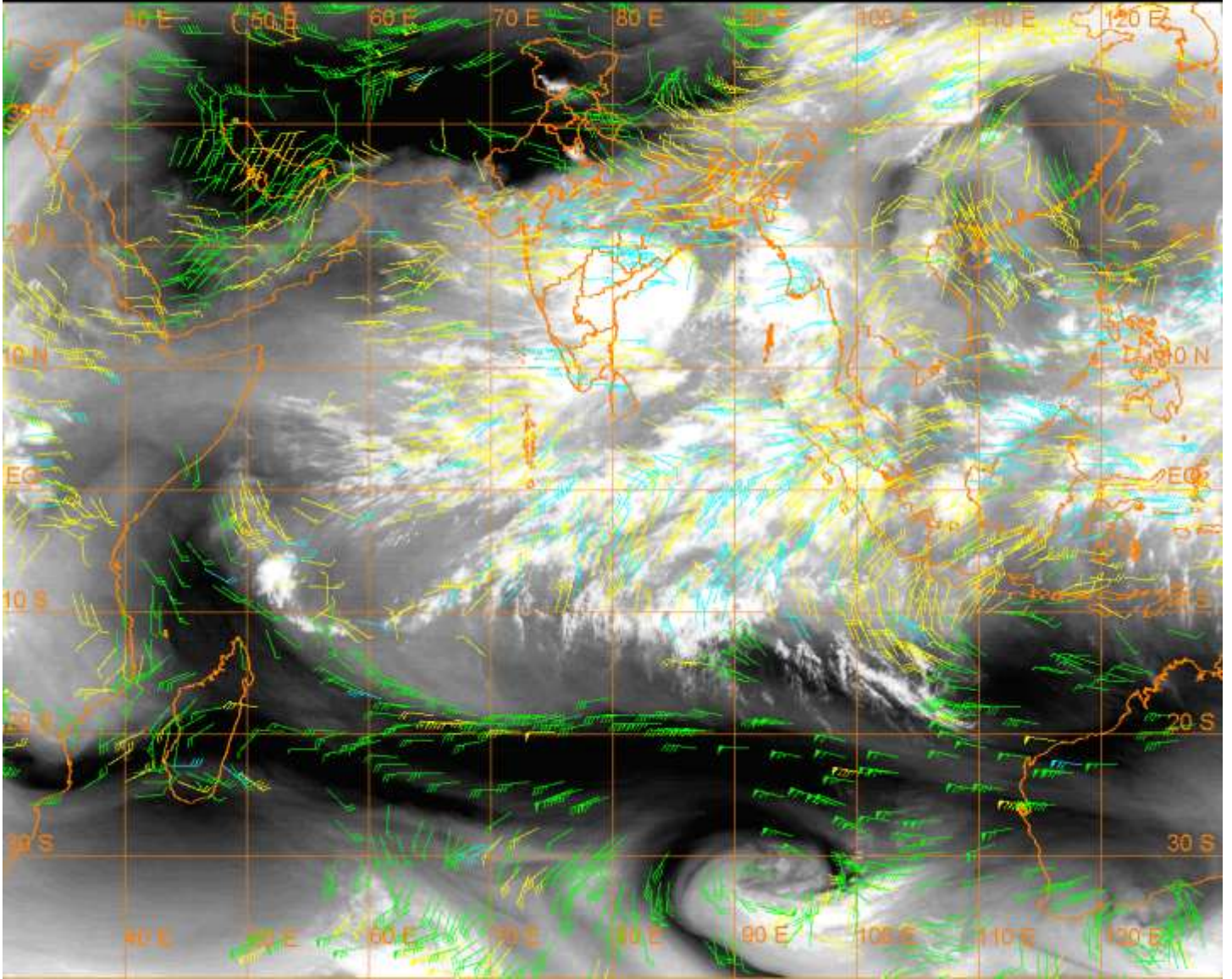
20 Kt

50 Kt

100-250 hPa

251-350 hPa

351-500 hPa



CLOUDS DESCRIPTION WITHIN INDIA:-

NORTH:-

SCT LOW/MED CLOUDS WITH EMBDD MOD TO INT CONVTN OVER S J&K ADJ NW HP EXT SE HARY (.) SCT LOW/MED CLOUDS WITH EMBDD ISOL WK TO MOD CONVTN OVER LADAKH UP (.) SCT LOW/MED CLOUDS OVER N J&K REST HP UTRKND N PJB DLH (.)

EAST:-

SCT LOW/MED CLOUDS WITH EMBDD INT TO V INT CONVTN OVER S ORS S CHTGH AND MOD TO INT CONVTN OVER NE ORS NE ASSAM MIZO & BD (.) SCT LOW/MED CLOUDS WITH EMBDD ISOL WK TO MOD CONVTN OVER N CHTGH REST ORS NW JHRKND GWB SKM REST NE STATES (.) SCT LOW/MED CLOUDS OVER BHR REST JHRKND SHWB (.)

WEST:-

SCT LOW/MED CLOUDS WITH EMBDD INT TO V INT CONVTN OVER VID ADJ MRTHWD AND MOD TO INT CONVTN OVER EXT NE RAJ NC GUJ SE MP (.) SCT LOW/MED CLOUDS WITH EMBDD ISOL WK TO MOD CONVTN OVER REST E RAJ REST GUJ REST MP REST MAHA (.) SCT LOW/MED CLOUDS OVER W RAJ GOA (.)

SOUTH:-

BKN LOW/MED CLOUDS WITH EMBDD INT TO V INT CONVTN OVER TLNGN RYLSM COTL AP (MINIMUM CTT MINUS 93 DEG C) (.) SCT LOW/MED CLOUDS WITH EMBDD MOD TO INT CONVTN OVER E KRNTK KER N TN LKSDP ANDAMAN & NICOBAR ILS AND WK TO MOD CONVTN OVER W KRNTK S TN (.)

ARABIAN SEA:-

SCT LOW/MED CLOUDS WITH EMBDD INT TO V INT CONVTN OVER SE ARSEA & COMORIN (.)

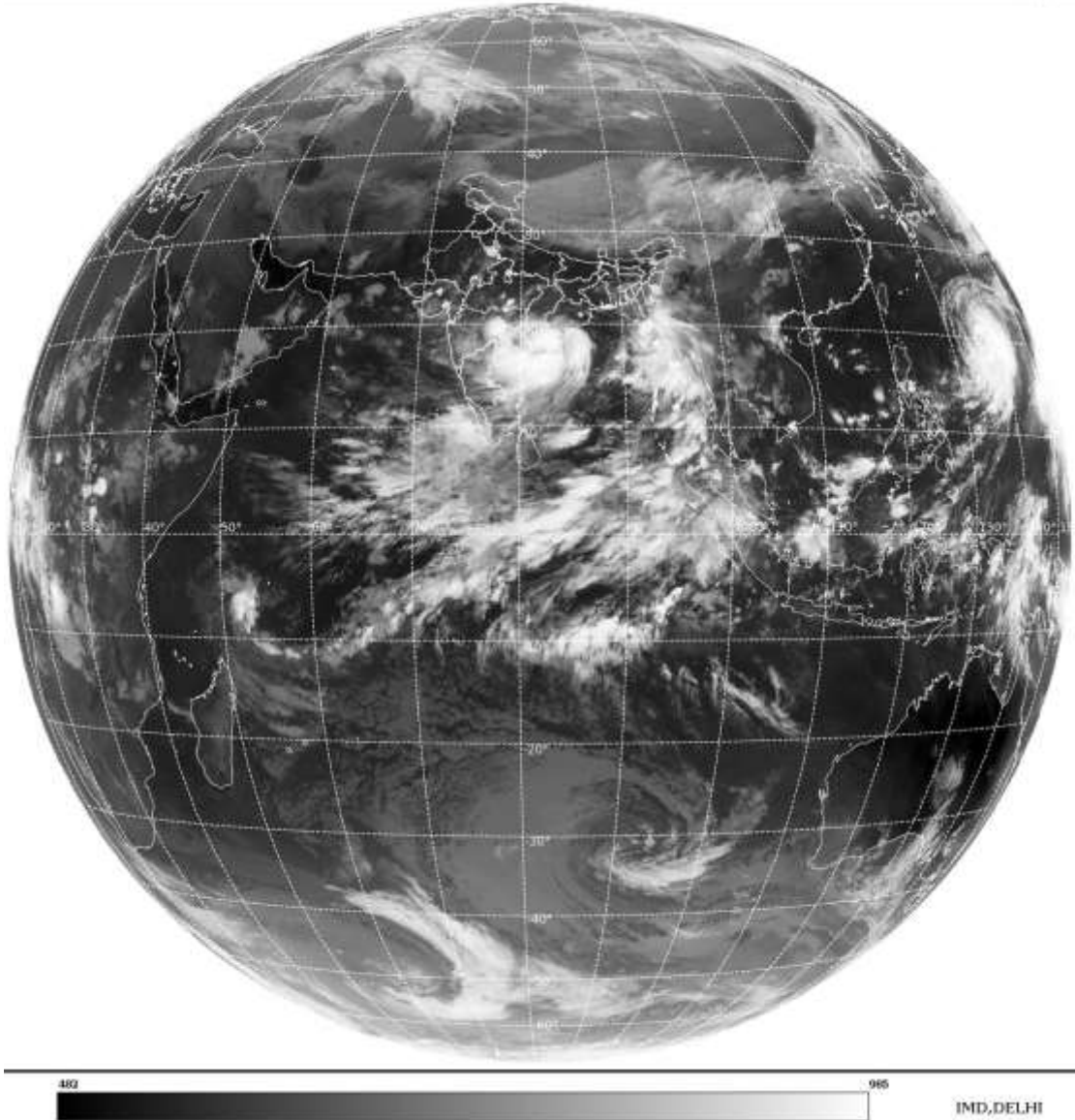
BAY OF BENGAL & ANDAMAN SEA:-

**BKN LOW/MED CLOUDS WITH EMBDD INT TO V INT CONVTN OVER WC BAY ARAKAN COAST
 ADJ EC BAY GULF OF MARTABAN ADJ S MYANMAR ANDAMAN SEA (.) SCT LOW/MED CLOUDS
 WITH EMBDD MOD TO INT CONVTN OVER REST BAY (.)**

CLOUDS DESCRIPTION OUTSIDE INDIA:-

SAT : INSAT-3D IMG
 Thermal Infrared1 Count 10.8 um
 LIB FULL DISK

27-09-2021/(0000 to 0026) GMT
 27-09-2021/(0530 to 0556) IST



**SCT LOW/MED CLOUDS WITH EMBDD MOD TO INT CONVTN OVER MALDIVES TIBET CHINA
 YELLOW SEA MYANMAR THAILAND GULF OF THAILAND CAMBODIA LAOS N VIETNAM
 SUMATRA STR OF MALACCA MALAY PENINSULA BORNEO SOUTH CHINA SEA CELEBES ILS
 & SEA PHILIPPINES AND OVER THE INDIAN OCEAN BET LAT 5.0N TO 12.0S LONG 50.0E TO
 100.0E (.)**

TOO 27/0700EF=

NNNN

LEGEND:-

REGION	NORTH	J&K HP PJB HARY DLH UP UTRKND
	EAST	BHR JHRKND CHTGH ORS WB SKMNORTH- EAST STATES
	WEST	RAJ MP GUJ MAHA GOA
	SOUTH	TLNGN AP KRNTK KER TN LKSDP ANDAMAN & NICOBAR ILS

CLOUD DISTRIBUTION	ISOL	ISOLATED (LESS THAN 25%)	
	SCT	SCATTERED (25 TO 50%)	
	BKN	BROKEN (51 TO 75%)	
	SLD	SOLID (GREATER THAN 75%)	
CLOUDS TOP TEMPERATURE	CTT	CLOUD TOP TEMPERATURE	
CONVECTION	WK CONVTN	WEAK CONVECTION (CTT GREATER THAN -25°C)	
	MOD CONVTN	MODERATE CONVECTION (CTT BETWEEN -25°C TO -40°C)	
	INT CONVTN	INTENSE CONVECTION (CTT BETWEEN -41°C TO -70°C)	
	V INT CONVTN	VERY INTENSE CONVECTION (CTT LESS THAN -70°C)	
METEOROLOGICAL SUB-DIVISIONS, STATES & UNION TERRITORIES	ARUPR	ARUNACHAL PRADESH	
	BHR	BIHAR	
	CHTGH	CHHATTISGARH	
	COTL AP	COASTAL ANDHRA PRADESH	
	COTL KRNTK	COASTAL KARNATAKA	
	COTL ORS	COASTAL ORISSA	
	GUJ	GUJARAT	
	GWB	GANGETIC WEST BENGAL	
	HARY	HARYANA	
	DLH	DELHI	
	HP	HIMACHAL PRADESH	
	J&K	JAMMU AND KASHMIR	
	JHRKND	JHARKHAND	
	KER	KERALA	
	KKN	KONKAN	
	LKSDP	LAKSHADWEEP	
	M MAHA	MADHYA MAHARASHTRA	
	MAHA	MAHARASHTRA	
	MANI	MANIPUR	
	MEGHA	MEGHALAYA	
	MIZO	MIZORAM	
	MP	MADHYA PRADESH	
		MRTHWD	MARATHWADA
		NAGA	NAGALAND
N COTL AP		NORTH COASTAL ANDHRA PRADESH	
NIK		NORTH INTERIOR KARNATAKA	
ORS		ORISSA	
PJB		PUNJAB	
RAJ		RAJASTHAN	
RYLSM		RAYALASEEMA	
SAU & KUTCH		SAURASHTRA & KUTCH	
SHWB		SUB-HIMALAYAN WEST BENGAL	
SIK		SOUTH INTERIOR KARNATAKA	
SKM		SIKKIM	

	TLNGN	TELANGANA
	TN	TAMIL NADU
	TRP	TRIPURA
	UP	UTTAR PRADESH
	UTRKND	UTTARAKHAND
	VID	VIDHARBHA
	SHWB	SUB HIMALAYAN WEST BENGAL
	GWB	GANGETIC WEST BENGAL
	ARSEA	ARABIAN SEA
	ILS	ISLANDS
MISCELLANEOUS	ASSW	IN ASSOCIATION WITH
	ASSTD	ASSOCIATED
	LLC	LOW LEVEL CIRCULATION
	EMBDD	EMBEDDED
	N/HOOD	NEIGHBOURHOOD
	EXT	EXTREME