



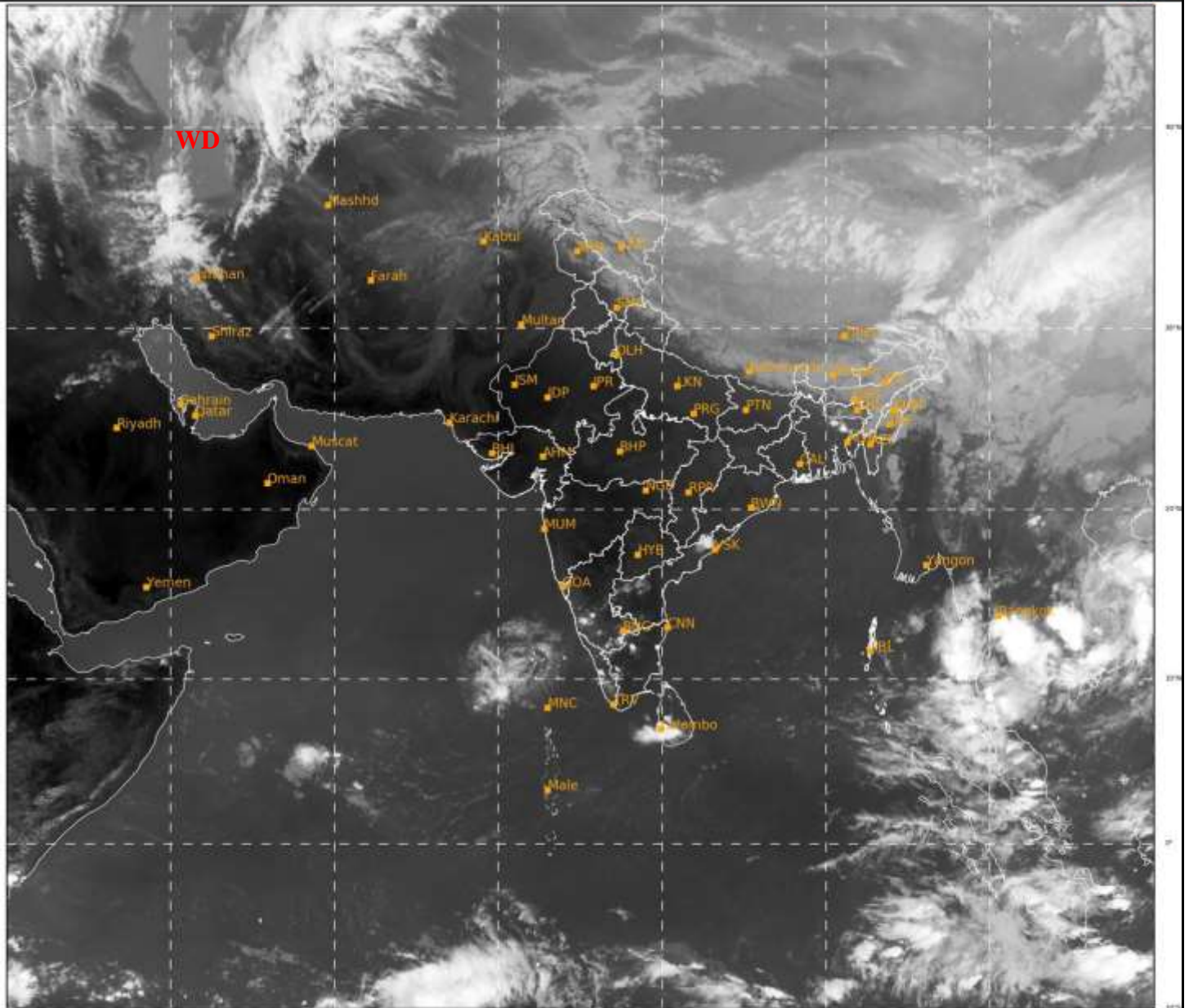
भारत मौसम विज्ञान विभाग
पृथ्वी विज्ञान मंत्रालय
India Meteorological Department
Ministry of Earth Sciences



**SATELLITE BULLETIN BASED ON SATELLITE
IMAGERIES AND PRODUCTS**
31.03.2022 TIME 1200 UTC

SAT : INSAT-3D IMG
IMG_TIR1 10.8 um
LIC Mercator

31-03-2022/(1200 to 1226) GMT
31-03-2022/(1730 to 1756) IST



342

937

IMD, DELHI

TCIN50 DEMS 311200

SATELLITE BULLETIN BASED ON INSAT-3D PIC OF 311200 UTC (.)

REGION COVERED BETWEEN LAT 50.0°N TO 30.0°S AND LONG 40.0°E TO 125.0°E (.)

SALIENT FEATURES:-

WESTERN DISTURBANCE (WD):-

SCT MULTILAYERED CLOUDS OVER CASPIAN SEA W IRAN & N/HOOD IN ASSW **WD** OVER THE AREA (.)

CONVECTIVE CLOUDS MASS OVER LAKSHADWEEP AREA:-

BKN MOD TO INTENSE CIRCULAR CONVECTIVE CLOUDS MASS OVER LKSDP AREA PERSISTS (MINIMUM CTT MINUS **50** DEG C) (.)

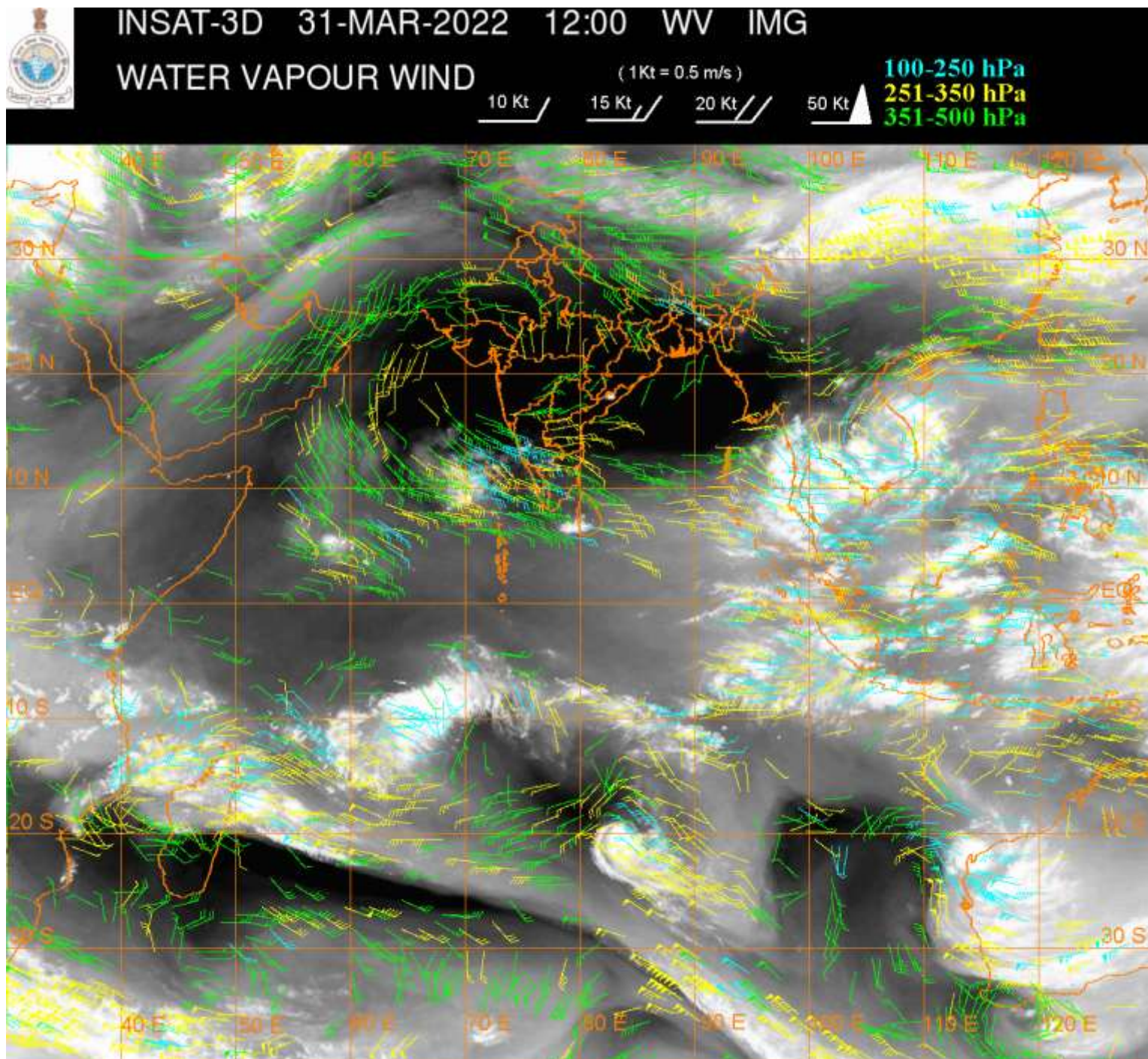
CONVECTION MOVED IN SOUTH -WESTWARDS DIRECTION DURING LAST 06 HRS (.)

PRECIPITATION NOWCASTING:-

(BASED ON SCOPE NOWCASTING TOOL AT 1100 UTC AT A LEAD TIME 03 HRS :-

RAINFALL UPTO 15 MM OVER LKSDP ISLANDS AREA (.)

RAINFALL UP TO 5 MM OVER SW SIK NE AP (.)



CLOUDS DESCRIPTION WITHIN INDIA:-

NORTH:-

SCT LOW/MED CLOUDS WITH EMBDD ISOL WK CONVTN OVER LADAKH (.) SCT LOW/MED CLOUDS OVER J&K N HP N UTRKND (.)

EAST:-

SCT LOW/MED CLOUDS WITH EMBDD MOD TO INT CONVTN OVER E BD (.) SCT LOW/MED CLOUDS WITH EMBDD WK CONVTN OVER N SHWB SKM ARURPR ASSAM MEGHA NAGA MANI N MIZO SW ORS (.)SCT LOW/MED CLOUDS OVER N BHR N ORS NE JHRKND GWB S SHWB REST NE STATES (.)

WEST:-

SCT LOW/MED CLOUDS OVER N GUJ (.)

SOUTH:-

SCT TO BKN LOW/MED CLOUDS WITH EMBDD MOD TO INT CONVTN OVER LKSDP (MINIMUM CTT MINUS 50 DEG C) SW SIK N TN C KER NE AP (.) SCT LOW/MED CLOUDS WITH EMBDD ISOL WKTO MOD CONVTN OVER S KER SE TLNGN NICOBAR ILS (.) SCT LOW/MED CLOUDS OVER S TLNGN N COTL AP RYLSM REST KRNTK REST KER REST TN ANDAMAN ILS (.)

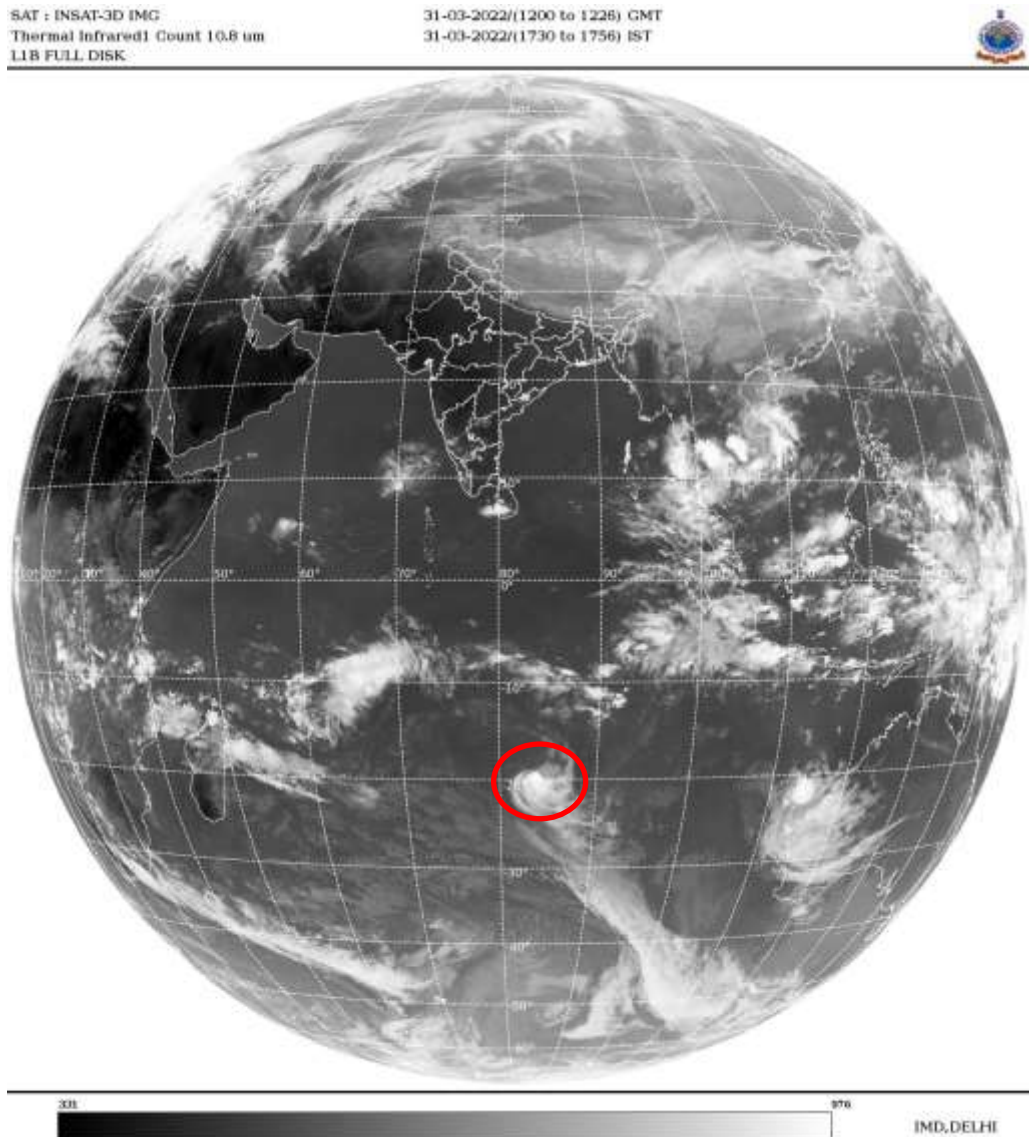
ARABIAN SEA:-

BKN LOW/MED CLOUDS WITH EMBDD MOD TO INT CONVTN OVER SE ARSEA ADJ LKSDP AREA (.)

BAY OF BENGAL & ANDAMAN SEA:-

SCT LOW/MED CLOUDS WITH EMBDD ISOL WK TO MOD CONVTN OVER SE BAY ANDAMAN SEA (.)

CLOUDS DESCRIPTION OUTSIDE INDIA:



VORTEX (HALIMA) OVER SOUTH INDIAN OCEAN:-

VORTEX (HALIMA) OVER SOUTH INDIAN OCEAN CENTERED NEAR **19.5S / 83.9E** (.) INTENSITY **T2.0/2.0** (.) ASSTD SCT TO BKN LOW/MED CLOUDS WITH EMBDD INT TO V INT CONVTN OVER AREA BET LAT 19.0S TO 22.0S LONG 82.0E TO 86.0E (.)

SCT LOW/MED CLOUDS WITH EMBDD MOD TO INT CONVTN OVER S SRI LANKA TIBET CHINA GULF OF THAILAND CAMBODIA S VIETNAM SUMATRA STR OF MALACCA MALAYSIA BORNEO S CHINA SEA JAVA ILS & SEA CELEBES ILS & SEA PHILIPPINES YELLOW SEA E CHINA SEA N MADAGASCAR N MOZAMBIQUE CHANNEL AND OVER INDIAN OCEAN BET 2.0S TO 30.0S LONG 50.0E TO 120.0E (.)

TOO 31/1815 HRS IST=

NNNN

LEGEND:-

REGION	NORTH	J&K HP PJB HARY DLH UP UTRKND
	EAST	BHR JHRKND CHTGH OR WB SKM NORTH- EAST STATES
	WEST	RAJ MP GUJ MAHA GOA
	SOUTH	TLNGN AP KRNTK KER TN LKSDP ANDAMAN & NICOBAR ILS

CLOUD DISTRIBUTION	ISOL	ISOLATED (LESS THAN 25%)
	SCT	SCATTERED (25 TO 50%)
	BKN	BROKEN (51 TO 75%)
	SLD	SOLID (GREATER THAN 75%)
CLOUDS TOP TEMPERATURE	CTT	CLOUD TOP TEMPERATURE
CONVECTION	WK CONVTN	WEAK CONVECTION (CTT GREATER THAN -25°C)
	MOD CONVTN	MODERATE CONVECTION (CTT BETWEEN -25°C TO -40°C)
	INT CONVTN	INTENSE CONVECTION (CTT BETWEEN -41°C TO -70°C)
	V INT CONVTN	VERY INTENSE CONVECTION (CTT LESS THAN -70°C)
METEOROLOGICAL SUB-DIVISIONS, STATES & UNION TERRITORIES	ARUPR	ARUNACHAL PRADESH
	BHR	BIHAR
	CHTGH	CHHATTISGARH
	COTL AP	COASTAL ANDHRA PRADESH
	COTL KRNTK	COASTAL KARNATAKA
	COTL ORS	COASTAL ORISSA
	GUJ	GUJARAT
	GWB	GANGETIC WEST BENGAL
	HARY	HARYANA
	DLH	DELHI
	HP	HIMACHAL PRADESH
	J&K	JAMMU AND KASHMIR
	JHRKND	JHARKHAND
	KER	KERALA
	KKN	KONKAN
	LKSDP	LAKSHADWEEP
	M MAHA	MADHYA MAHARASHTRA
	MAHA	MAHARASHTRA
	MANI	MANIPUR
	MEGHA	MEGHALAYA
MIZO	MIZORAM	
MP	MADHYA PRADESH	

	MRTHWD	MARATHWADA
	NAGA	NAGALAND
	N COTL AP	NORTH COASTAL ANDHRA PRADESH
	NIK	NORTH INTERIOR KARNATAKA
	ORS	ORISSA
	PJB	PUNJAB
	RAJ	RAJASTHAN
	RYLSM	RAYALASEEMA
	SAU & KUTCH	SAURASHTRA & KUTCH
	SHWB	SUB-HIMALAYAN WEST BENGAL
	SIK	SOUTH INTERIOR KARNATAKA
	SKM	SIKKIM
	TLNGN	TELANGANA
	TN	TAMIL NADU
	TRP	TRIPURA
	UP	UTTAR PRADESH
	UTRKN D	UTTARAKHAND
	VID	VIDHARBHA
	SHWB	SUB HIMALAYAN WEST BENGAL
	GWB	GANGETIC WEST BENGAL
	ARSEA	ARABIAN SEA
	ILS	ISLANDS
MISCELLANEOUS	ASSW	IN ASSOCIATION WITH
	ASSTD	ASSOCIATED
	LLC	LOW LEVEL CIRCULATION
	EMBDD	EMBEDDED
	N/HOOD	NEIGHBOURHOOD
	EXT	EXTREME