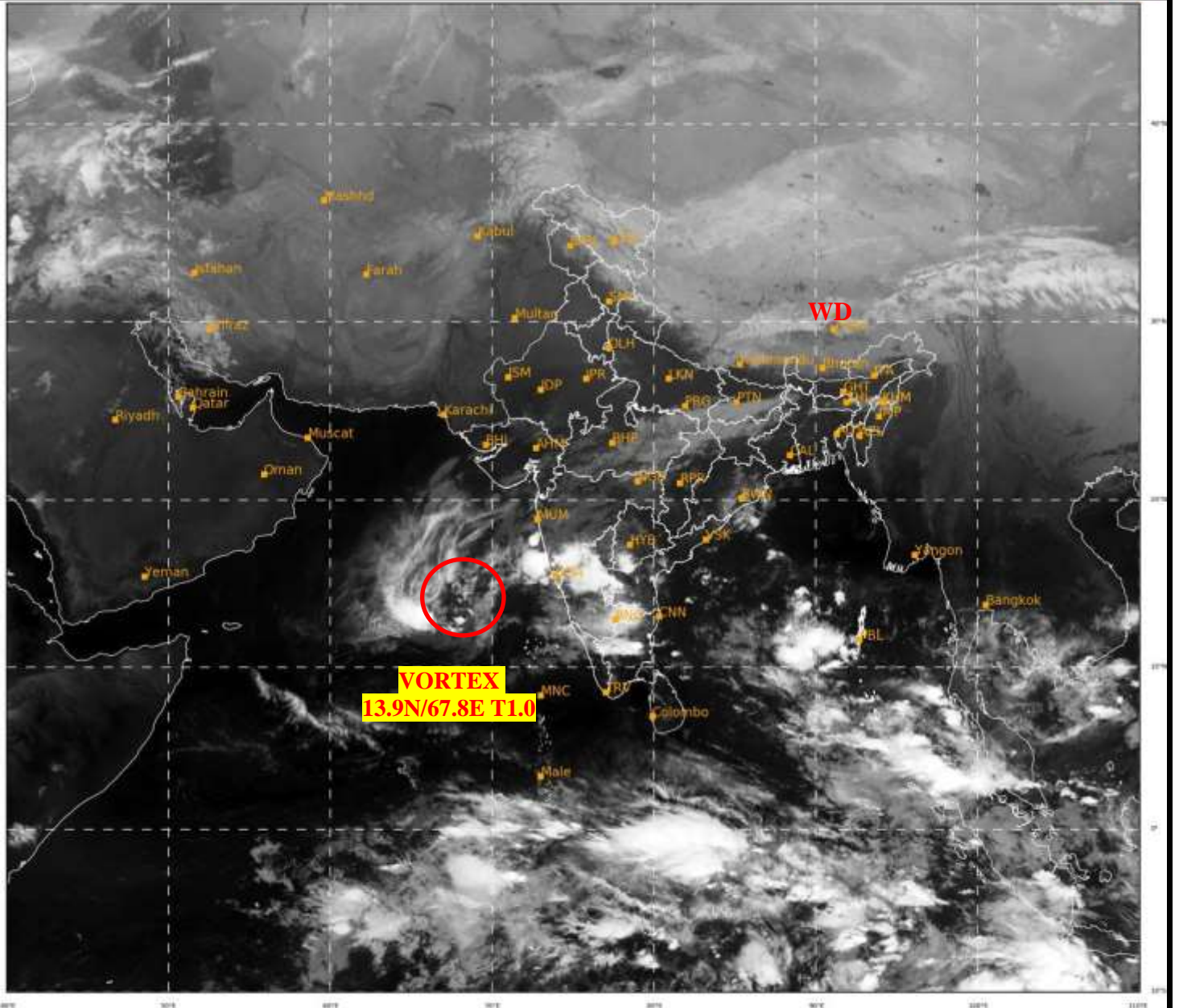




SATELLITE BULLETIN BASED ON SATELLITE
IMAGERIES AND PRODUCTS
20.11.2021 TIME 1800 UTC

SAT : INSAT-3D IMG
IMG_TIR1 10.8 um
L1C Mercator

20-11-2021/(1800 to 1826) GMT
20-11-2021/(2330 to 2356) IST



539

946

IMD,DELHI

TCIN50 DEMS 201800
SATELLITE BULLETIN BASED ON INSAT-3D PIC OF 201800 UTC (.)
REGION COVERED BETWEEN LAT 50.0°N TO 30.0°S AND LONG 40.0°E TO 125.0°E (.)

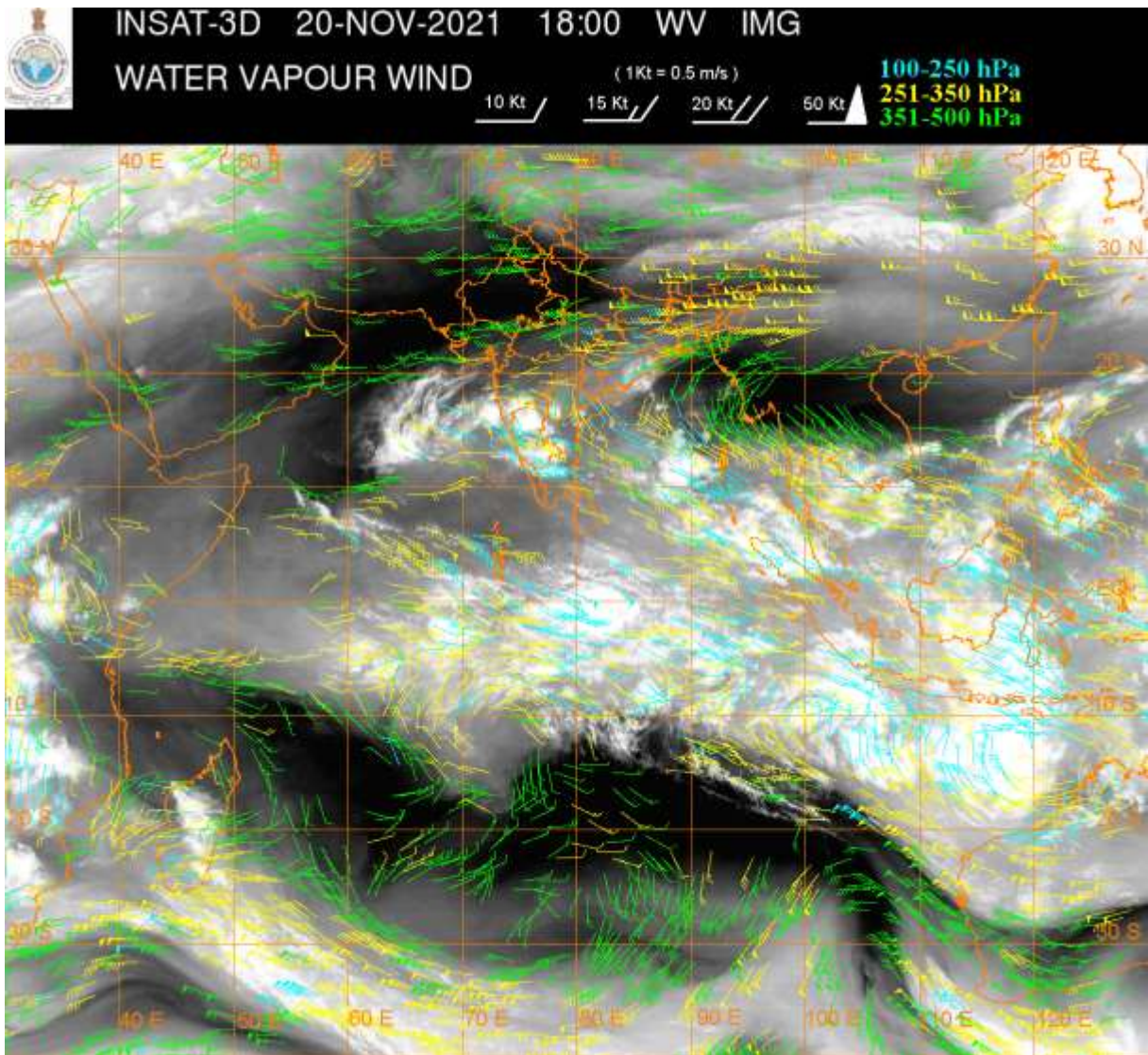
SALIENT FEATURES:-

VORTEX (WML) OVER EC ARSEA:-

VORTEX (WML) OVER EC ARSEA CENTERED WITHIN HALF A DEGREE OF **13.9N/67.8E** (.) INTENSITY **T1.0** (.) CENTER IS POORLY DEFINED IN THE IR IMAGERY (.)ASSTD SCT TO BKN LOW/MED CLOUDS WITH EMBDD INT TO V INT CONVTN OVER EC ARSEA BET LAT 12.5N TO 14.0N AND LONG 65.0E TO 66.5E AND MOD TO INT CONVTN REST EC ADJ WC ARSEA (.) MINIMUM CTT MINUS **93** DEG C (.) CONVTN OF THE SYSTEM HAS DECREASED DURING LAST 06 HOURS (.)

WESTERN DISTURBANCE (WD):-

SCT MULTILAYERED CLOUDS OVER E TIBET ADJ CHINA IN ASSW **WD** OVER THE AREA (.)



CLOUDS DESCRIPTION WITHIN INDIA:-

NORTH:-

SCT LOW/MED CLOUDS WITH EMBDD WK TO MOD CONVTN OVER LADAKH N HP EXT N UTRKND E UP (.) ISOL LOW/MED CLOUDS OVER J&K S HP SE HARY NW UP (.)

EAST:-

SCT LOW/MED CLOUDS WITH EMBDD ISOL MOD TO INT CONVTN OVER EC ORS AND WK CONVTN OVER N CHTGH N JHRKND S BHR N GWB S SHWB SKM ARUPR E MEGHA EC ASSAM (.) ISOL TO SCT LOW/MED CLOUDS OVER REST ORS S CHTHG S JHRKND S GWB REST ASSAM NAGA MANI (.)

WEST:-

SCT LOW/MED CLOUDS WITH EMBDD MOD TO INT CONVTN OVER EXT S KKN (MINIMUM CTT MINUS 82 DEG) AND MOD TO INT CONVTN OVER SOUTH M MAHA (.) SCT LOW/MED CLOUDS WITH EMBDD WK CONVTN OVER MP N VID (.)SCT LOW/MED CLOUDS OVER E RAJ GUJ REST MAHA & GOA (.)

SOUTH:-

SCT LOW/MED CLOUDS WITH EMBDD INT TO V INT CONVTN OVER NIK (MINIMUM CTT MINUS 90 DEG) W RYLSM N TN (MINIMUM CTT MINUS 81 DEG) (.) SCT LOW/MED CLOUDS WITH EMBDD MOD TO INT CONVTN OVER CENTRAL PARTS OF COTL AP SIK EXT SW TLNGN EXT N KER S ADAMAN ILS AND WK TO MOD CONVTN OVER REST N KER REST KRNTK LKSDP & NICOBAR ILS (.)SCT LOW/MED CLOUDS OVER N LTNGN REST AP S KER S TN (.)

ARABIAN SEA:-

SCT LOW/MED CLOUDS WITH EMBDD INT TO V INT CONVTN OVER EC ARSEA BET LAT 12.5N TO 14.0N AND LONG 65.0E TO 66.5E & S KKN (.) SCT LOW/MED CLOUDS WITH EMBDD MOD TO INT CONVTN OVER REST EC ADJ WC AESEA (.)

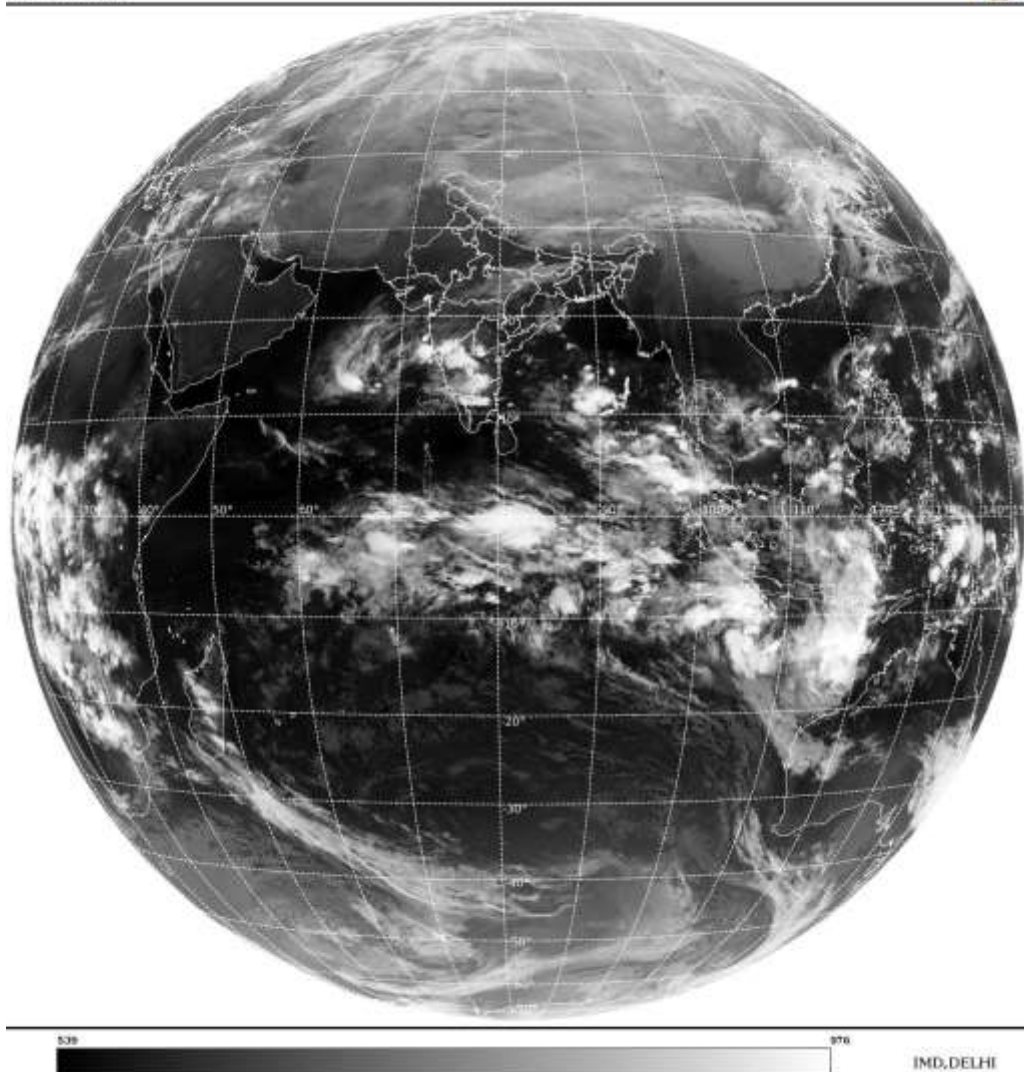
BAY OF BENGAL & ANDAMAN SEA:-

SCT LOW/MED CLOUDS WITH EMBDD MOD TO INT CONVTN OVER WC BAY OFF ORS COAST SE BAY S ANDAMAN SEA (.)

CLOUDS DESCRIPTION OUTSIDE INDIA:-

SAT : INSAT-3D IMG
Thermal Infrared1 Count 10.8 um
LIB FULL DISK

20-11-2021/(1800 to 1826) GMT
20-11-2021/(2330 to 2356) IST



SCT LOW/MED CLOUDS WITH EMBDD MOD TO INT CONVTN OVER NEPAL TIBET CHINA MALDIVES GULF OF THAILAND S VIETNAM CAMBODIA SUMATRA STR OF MALACCA MALAYSIA SUMATRA JAVA ILS & SEA CELEBES ILS & SEA BORNEO SOUTH CHINA SEA PHILIPPINES YELLOW SEA E CHINA SEA AND OVER INDIAN OCEAN AND BET LAT 5.0N TO 18.5S LONG 55.0E TO 120.0E (.)

TOO 21/0025EF=

NNNN

LEGEND:-

REGION	NORTH	J&K HP PJB HARY DLH UP UTRKND
	EAST	BHR JHRKND CHTGH ORS WB SKM NORTH- EAST STATES
	WEST	RAJ MP GUJ MAHA GOA
	SOUTH	TLNGN AP KRNTK KER TN LKSDP ANDAMAN & NICOBAR ILS

CLOUD DISTRIBUTION	ISOL	ISOLATED (LESS THAN 25%)
	SCT	SCATTERED (25 TO 50%)
	BKN	BROKEN (51 TO 75%)

	SLD	SOLID (GREATER THAN 75%)	
CLOUDS TOP TEMPERATURE	CTT	CLOUD TOP TEMPERATURE	
CONVECTION	WK CONVTN	WEAK CONVECTION (CTT GREATER THAN -25°C)	
	MOD CONVTN	MODERATE CONVECTION (CTT BETWEEN -25°C TO -40°C)	
	INT CONVTN	INTENSE CONVECTION (CTT BETWEEN -41°C TO -70°C)	
	V INT CONVTN	VERY INTENSE CONVECTION (CTT LESS THAN -70°C)	
METEOROLOGICAL SUB-DIVISIONS, STATES & UNION TERRITORIES	ARUPR	ARUNACHAL PRADESH	
	BHR	BIHAR	
	CHTGH	CHHATTISGARH	
	COTL AP	COASTAL ANDHRA PRADESH	
	COTL KRNTK	COASTAL KARNATAKA	
	COTL ORS	COASTAL ORISSA	
	GUJ	GUJARAT	
	GWB	GANGETIC WEST BENGAL	
	HARY	HARYANA	
	DLH	DELHI	
	HP	HIMACHAL PRADESH	
	J&K	JAMMU AND KASHMIR	
	JHRKND	JHARKHAND	
	KER	KERALA	
	KKN	KONKAN	
	LKSDP	LAKSHADWEEP	
	M MAHA	MADHYA MAHARASHTRA	
	MAHA	MAHARASHTRA	
	MANI	MANIPUR	
	MEGHA	MEGHALAYA	
	MIZO	MIZORAM	
	MP	MADHYA PRADESH	
		MRTHWD	MARATHWADA
		NAGA	NAGALAND
N COTL AP		NORTH COASTAL ANDHRA PRADESH	
NIK		NORTH INTERIOR KARNATAKA	
ORS		ORISSA	
PJB		PUNJAB	
RAJ		RAJASTHAN	
RYLSM		RAYALASEEMA	
SAU & KUTCH		SAURASHTRA & KUTCH	
SHWB		SUB-HIMALAYAN WEST BENGAL	
SIK		SOUTH INTERIOR KARNATAKA	
SKM		SIKKIM	
TLNGN		TELANGANA	
TN		TAMIL NADU	
TRP	TRIPURA		

	UP	UTTAR PRADESH
	UTRKND	UTTARAKHAND
	VID	VIDHARBHA
	SHWB	SUB HIMALAYAN WEST BENGAL
	GWB	GANGETIC WEST BENGAL
	ARSEA	ARABIAN SEA
	ILS	ISLANDS
MISCELLANEOUS	ASSW	IN ASSOCIATION WITH
	ASSTD	ASSOCIATED
	LLC	LOW LEVEL CIRCULATION
	EMBDD	EMBEDDED
	N/HOOD	NEIGHBOURHOOD
	EXT	EXTREME