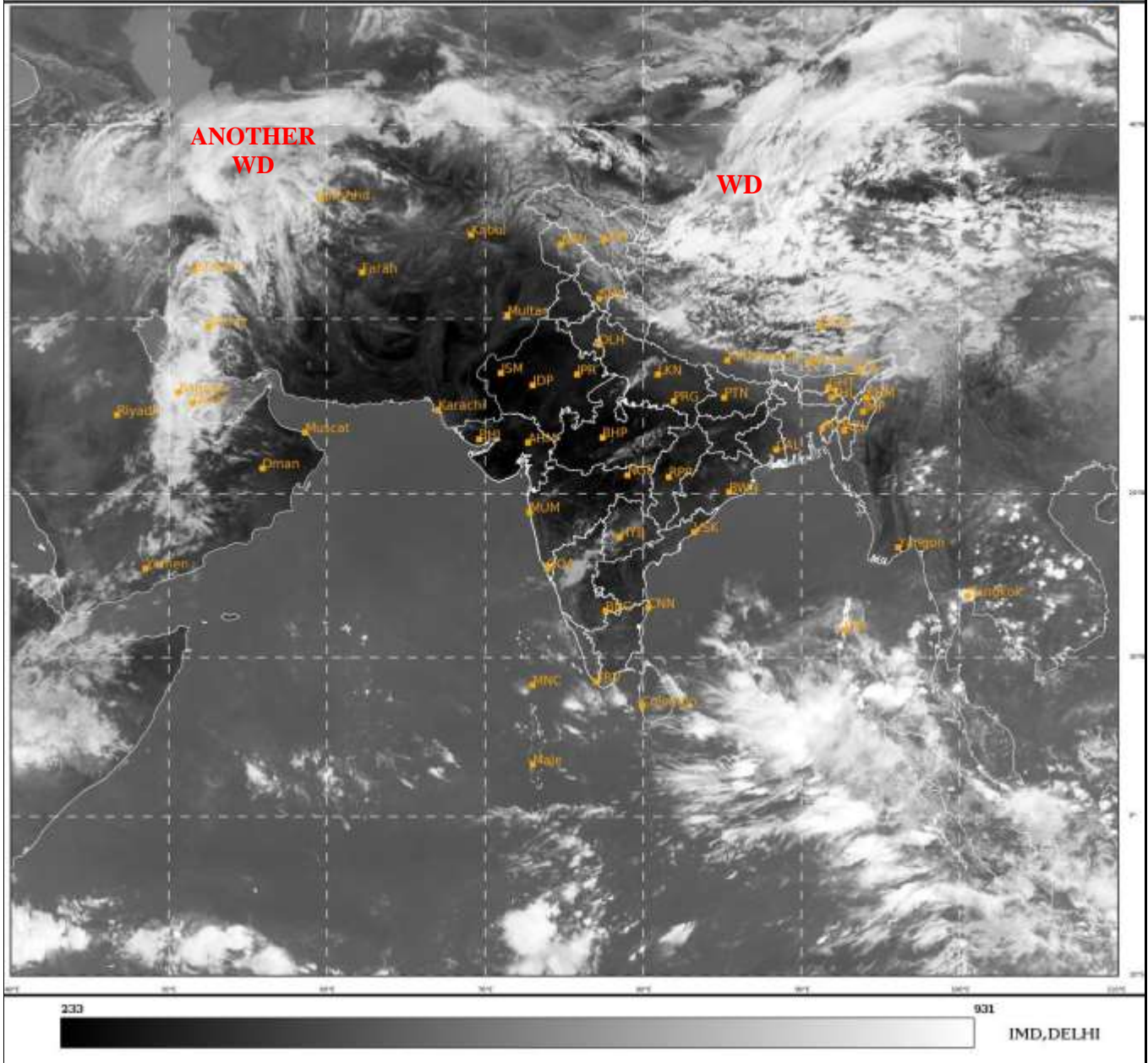




**SATELLITE BULLETIN BASED ON SATELLITE
IMAGERIES AND PRODUCTS**
26.04.2022 TIME 0600UTC

SAT : INSAT-3DR IMG
IMG_TIR1 10.8 um
LIC Mercator

26-04-2022/(0615 to 0642) GMT
26-04-2022/(1145 to 1212) IST



TCIN50 DEMS 260600

SATELLITE BULLETIN BASED ON INSAT-3D PIC OF 260600 UTC (.)

REGION COVERED BETWEEN LAT 50.0°N TO 30.0°S AND LONG 40.0°E TO 125.0°E (.)

SALIENT FEATURES:-

WESTERN DISTURBANCE (WD):-

SCT MULTILAYERED CLOUDS OVER TIBET ADJ CHINA AND N/HOOD IN ASSW **WD** OVER THE AREA (.)

SCT MULTILAYERED CLOUDS OVER S CASPIAN SEA IRAN AND N/HOOD IN ASSW **ANOTHER WD** OVER THE AREA (.)

PRECIPITATION NOWCASTING:-

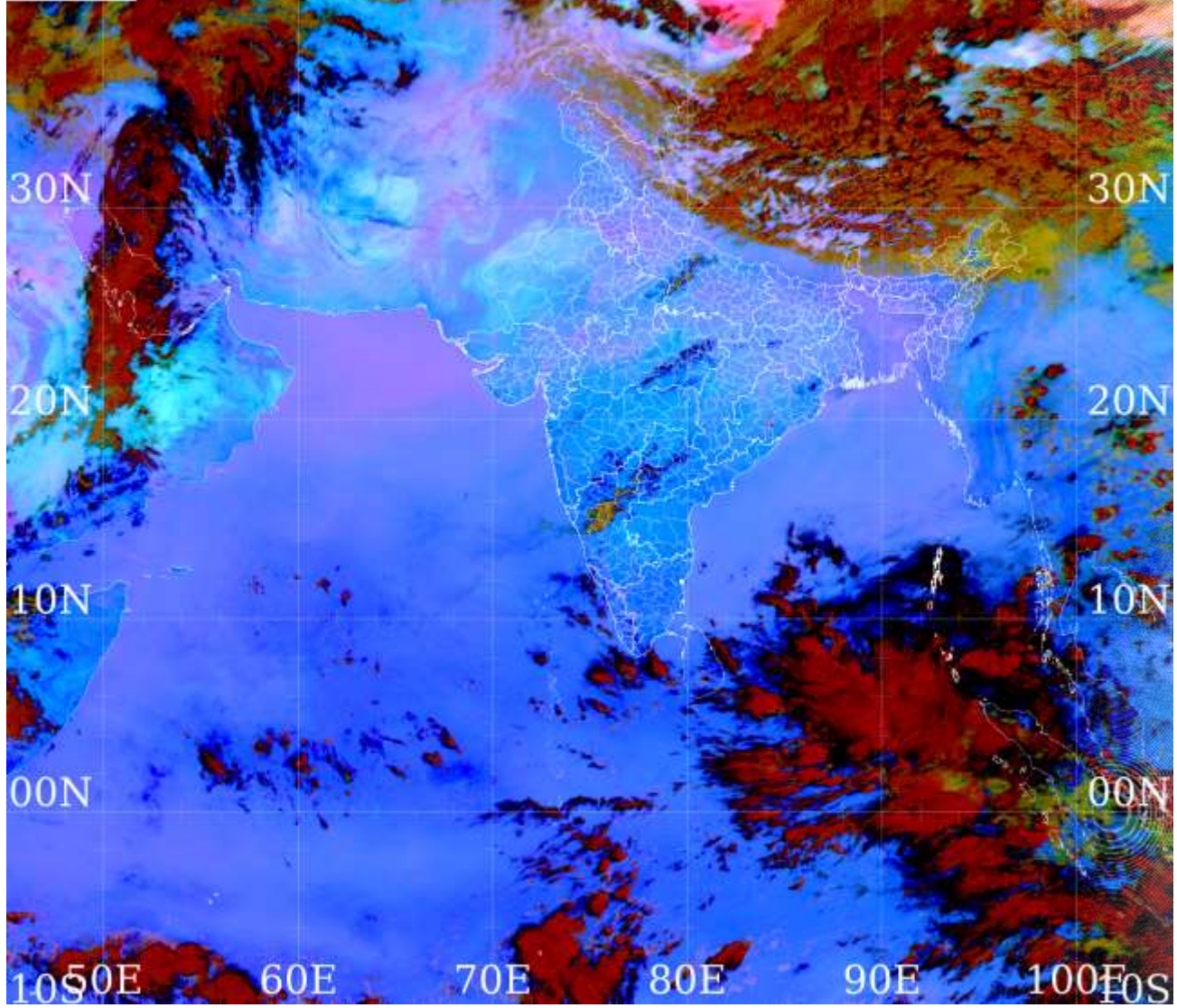
(BASED ON SCOPE NOWCASTING TOOL AT 0500 UTC AT A LEAD TIME OF 03 HRS (MM/HR) :-
RAINFALL UPTO 0.5-2 MM OBSERVED OVER NE ASSAM E ARUPR NICOBAR ILS (.)

DUST:-

METEOSAT-8 RGB PRODUCT AT 0630 UTC INDICATES DUST OVER ISOLATED PLACES OF SE RAJ HARY ADJ NW UP (.)



60E 70E 80E 90E 100E
MSG-1: SEVIRI [dust]
20220426_0630UTC



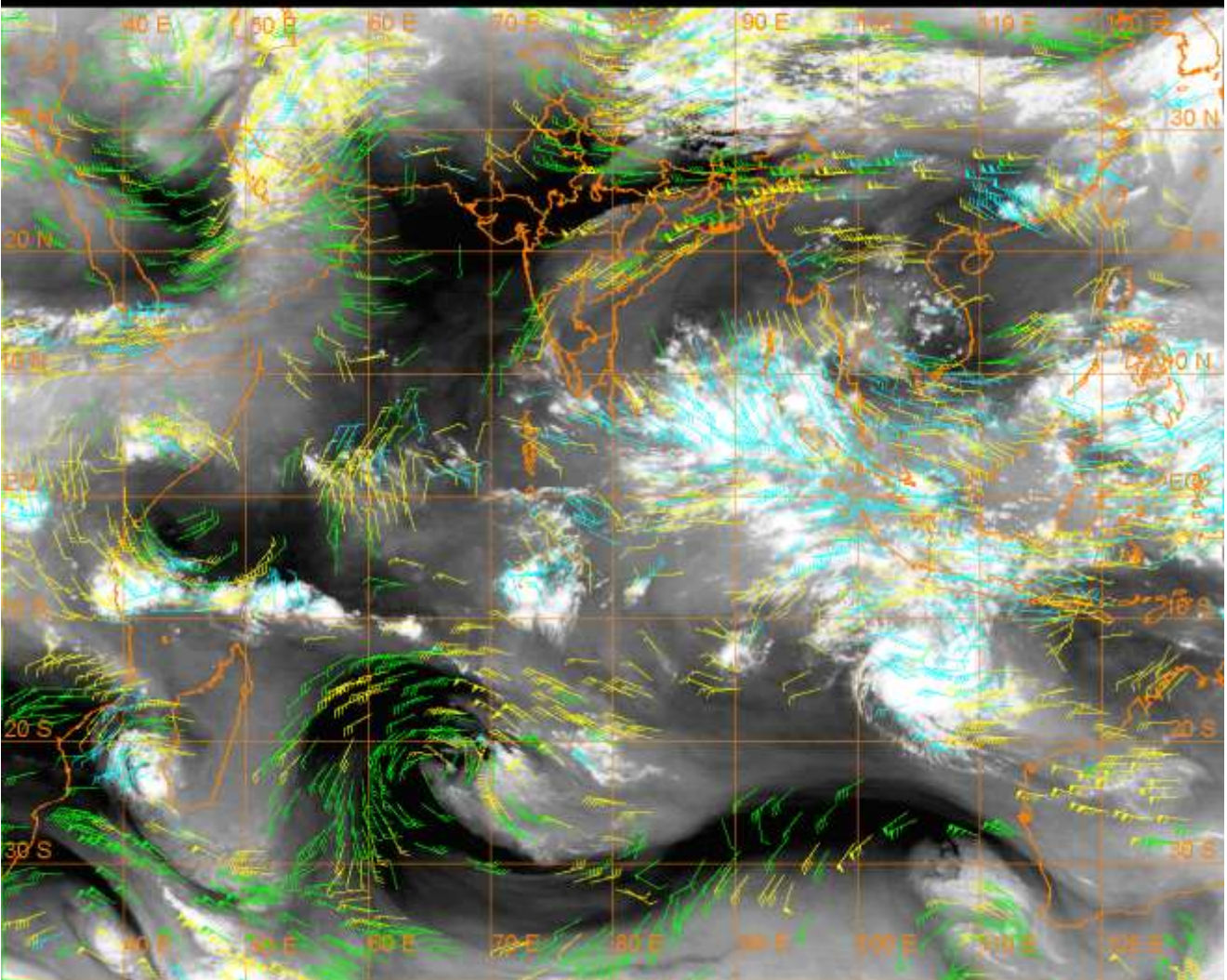
INSAT-3DR 26-APR-2022 06:15 WV IMG

WATER VAPOUR WIND

(1Kt = 0.5 m/s)

10 Kt // 15 Kt // 20 Kt // 50 Kt

100-250 hPa
 251-350 hPa
 351-500 hPa



CLOUDS DESCRIPTION WITHIN INDIA:-

NORTH:-

SCT LOW/MED CLOUDS WITH EMBDD WK TO MOD CONVTN OVER EXT E LADAKH N UTRKND WC UP (.) SCT LOW/MED CLOUDS OVER REST LADAKH E J&K HP (.)

EAST:-

SCT LOW/MED CLOUDS WITH EMBDD WK TO MOD CONVTN OVER SKM ARUPR NE ASSAM ADJ N NAGA (.) SCT LOW/MED CLOUDS OVER NW JHRKND NE BHR N SHWB REST NE STATES (.)

WEST:-

SCT LOW/MED CLOUDS WITH EMBDD WK CONVTN OVER EXT NW& SE MP (.) SCT LOW/MED CLOUDS OVER S MRTWD M MAHA (.)

SOUTH:-

SCT LOW/MED CLOUDS WITH EMBDD WK TO MOD CONVTN OVER NICOBAR ILS AND WK CONVTN OVER SW TLNGN NIK & ANDAMAN ILS (.) SCT LOW/MED CLOUDS OVER KER TN LKSDP ILS (.)

ARABIAN SEA:-

SCT LOW/MED CLOUDS WITH EMBDD MOD TO INT CONVTN OVER SE ARSEA AND COMORIN AREA (.)

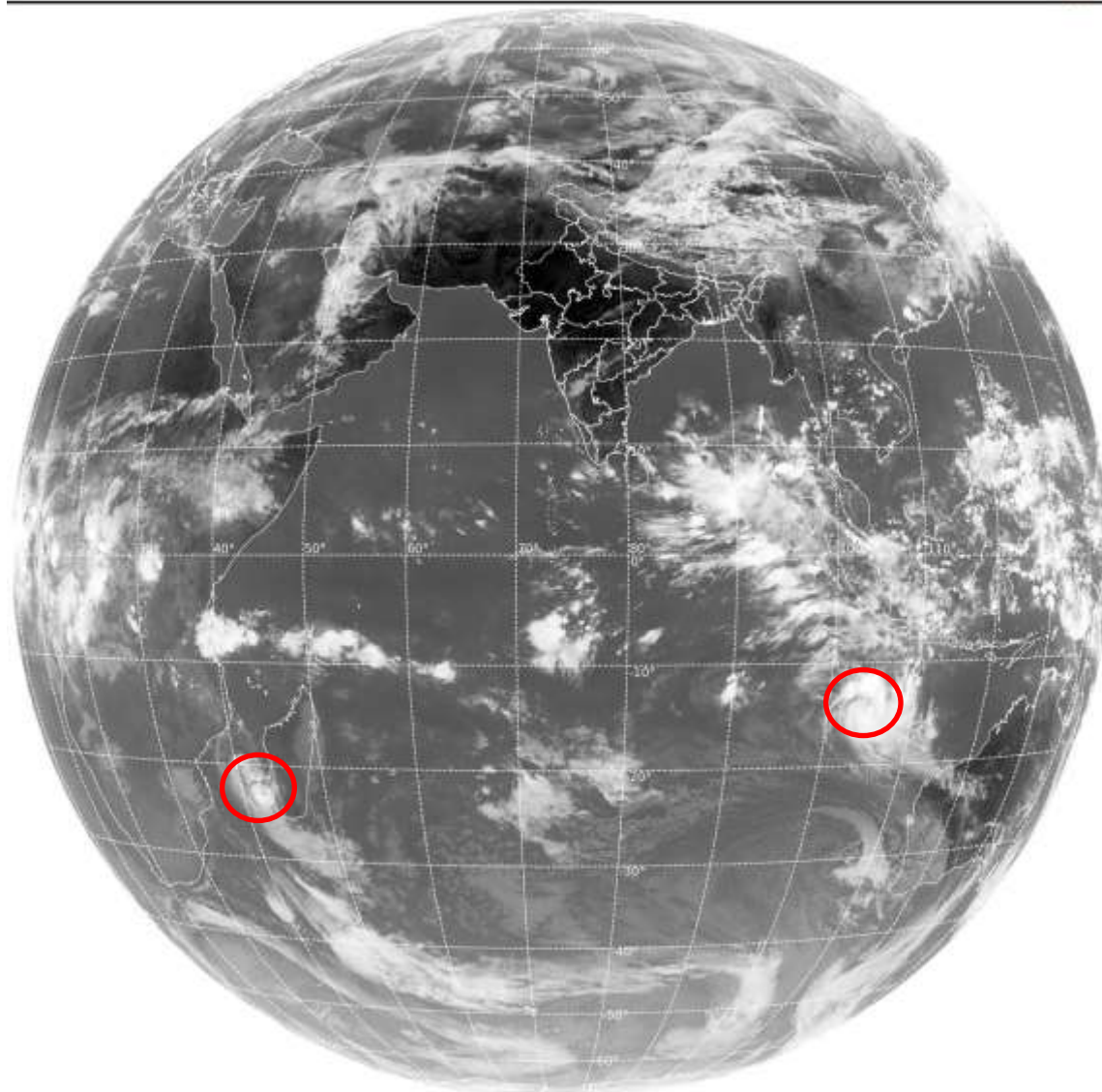
BAY OF BENGAL & ANDAMAN SEA:-

SCT LOW/MED CLOUDS WITH EMBDD INT TO V INT CONVTN OVER SE BAY ADJ EQT INDIAN OCEAN S ANDAMAN SEA AND MOD TO INT CONVTN OVER SW BAY (.)

CLOUDS DESCRIPTION OUTSIDE INDIA:-

SAT : INSAT-3DR IMG
Thermal Infrared1 Count 10.8 um
LIB FULL DISK

26-04-2022/(0615 to 0642) GMT
26-04-2022/(1145 to 1212) IST



VORTEX (JASMINE) OVER SOUTH INDIAN OCEAN:-

VORTEX (JASMINE) OVER SOUTH INDIAN OCEAN (MOZAMBIQUE CHANNEL) WITH CENTERED NEAR 22.7S / 41.9E (.) INTENSITY T3.5/4.0 (.) ASSTD BKN LOW/MED CLOUDS WITH EMBDD INT TO V INT CONVTN OVER AREA BET LAT 19.5S TO 24.5S AND LONG 38.5E TO 43.0E (.)

ANOTHER VORTEX OVER SOUTH INDIAN OCEAN:-

VORTEX OVER SOUTH INDIAN OCEAN WITH CENTERED NEAR 12.2S / 101.9E (.) INTENSITY T1.5/2.0 (.) ASSTD BKN LOW/MED CLOUDS WITH EMBDD INT TO V INT CONVTN OVER AREA BET LAT 11.0S TO 18.0S AND LONG 100.0E TO 110.0E (.)

SCT LOW/MED CLOUDS WITH EMBDD MOD TO INT CONVTN OVER TIBET CHINA YELLOW SEA S THAILAND GULF OF THAILAND SUMATRA STR OF MALACCA MALAYSIA BORNEO SOUTH CHINA SEA JAVA ILS & SEA CELEBES ILS & SEA PHILIPPINES SULU SEA S MADAGASCAR MOZAMBIQUE CHANNEL AND OVER INDIAN OCEAN BET LAT 5.0N TO 20.0S LONG 40.0E TO 113.0E (.)

TOO 26/1245 HRS IST=

NNNN

LEGEND:-

REGION	NORTH	J&K HP PJB HARY DLH UP UTRKND
	EAST	BHR JHRKND CHTGH OR WB SKM NORTH- EAST STATES
	WEST	RAJ MP GUJ MAHA GOA
	SOUTH	TLNGN AP KRNTK KER TN LKSDP ANDAMAN & NICOBAR ILS

CLOUD DISTRIBUTION	ISOL	ISOLATED (LESS THAN 25%)
	SCT	SCATTERED (25 TO 50%)
	BKN	BROKEN (51 TO 75%)
	SLD	SOLID (GREATER THAN 75%)
CLOUDS TOP TEMPERATURE	CTT	CLOUD TOP TEMPERATURE
CONVECTION	WK CONVTN	WEAK CONVECTION (CTT GREATER THAN -25°C)
	MOD CONVTN	MODERATE CONVECTION (CTT BETWEEN -25°C TO -40°C)
	INT CONVTN	INTENSE CONVECTION (CTT BETWEEN -41°C TO -70°C)
	V INT CONVTN	VERY INTENSE CONVECTION (CTT LESS THAN -70°C)
METEOROLOGICAL SUB-DIVISIONS, STATES & UNION TERRITORIES	ARUPR	ARUNACHAL PRADESH
	BHR	BIHAR
	CHTGH	CHHATTISGARH
	COTL AP	COASTAL ANDHRA PRADESH
	COTL KRNTK	COASTAL KARNATAKA
	COTL ORS	COASTAL ORISSA
	GUJ	GUJARAT

	GWB	GANGETIC WEST BENGAL
	HARY	HARYANA
	DLH	DELHI
	HP	HIMACHAL PRADESH
	J&K	JAMMU AND KASHMIR
	JHRKND	JHARKHAND
	KER	KERALA
	KKN	KONKAN
	LKSDP	LAKSHADWEEP
	M MAHA	MADHYA MAHARASHTRA
	MAHA	MAHARASHTRA
	MANI	MANIPUR
	MEGHA	MEGHALAYA
	MIZO	MIZORAM
	MP	MADHYA PRADESH
	MRTHWD	MARATHWADA
	NAGA	NAGALAND
	N COTL AP	NORTH COASTAL ANDHRA PRADESH
	NIK	NORTH INTERIOR KARNATAKA
	ORS	ORISSA
	PJB	PUNJAB
	RAJ	RAJASTHAN
	RYLSM	RAYALASEEMA
	SAU & KUTCH	SAURASHTRA & KUTCH
	SHWB	SUB-HIMALAYAN WEST BENGAL
	SIK	SOUTH INTERIOR KARNATAKA
	SKM	SIKKIM
	TLNGN	TELANGANA
	TN	TAMIL NADU
	TRP	TRIPURA
	UP	UTTAR PRADESH
	UTRKND	UTTARAKHAND
	VID	VIDHARBHA
	SHWB	SUB HIMALAYAN WEST BENGAL
	GWB	GANGETIC WEST BENGAL
	ARSEA	ARABIAN SEA
	ILS	ISLANDS
MISCELLANEOUS	ASSW	IN ASSOCIATION WITH
	ASSTD	ASSOCIATED
	LLC	LOW LEVEL CIRCULATION
	EMBDD	EMBEDDED
	N/HOOD	NEIGHBOURHOOD
	EXT	EXTREME