



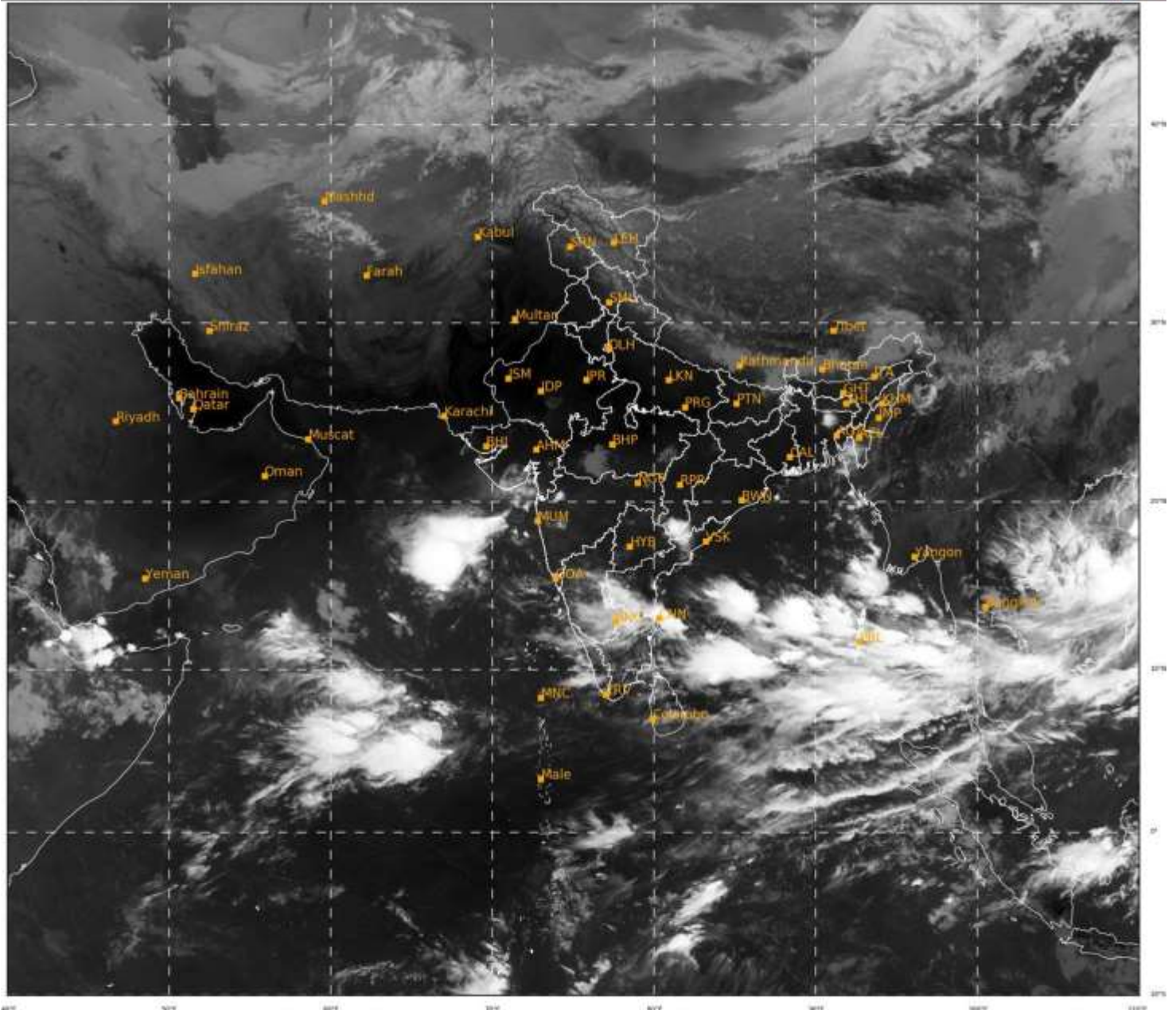
भारत मौसम विज्ञान विभाग
पृथ्वी विज्ञान मंत्रालय
India Meteorological Department
Ministry of Earth Sciences



SATELLITE BULLETIN BASED ON SATELLITE
IMAGERIES AND PRODUCTS
08.10.2021 TIME 0300 UTC

SAT : INSAT-3DR IMG
IMG_TIR1 10.8 um
LIC Mercator

08-10-2021/(0315 to 0342) GMT
08-10-2021/(0845 to 0912) IST



425

938

IMD, DELHI

TCIN50 DEMS 080300

SATELLITE BULLETIN BASED ON INSAT-3DR PIC OF 080315 UTC (.)

REGION COVERED BETWEEN LAT 50.0°N TO 30.0°S AND LONG 40.0°E TO 125.0°E (.)



INSAT-3DR 08-OCT-2021 03:15 WV IMG

WATER VAPOUR WIND

(1Kt = 0.5 m/s)

10 Kt

15 Kt

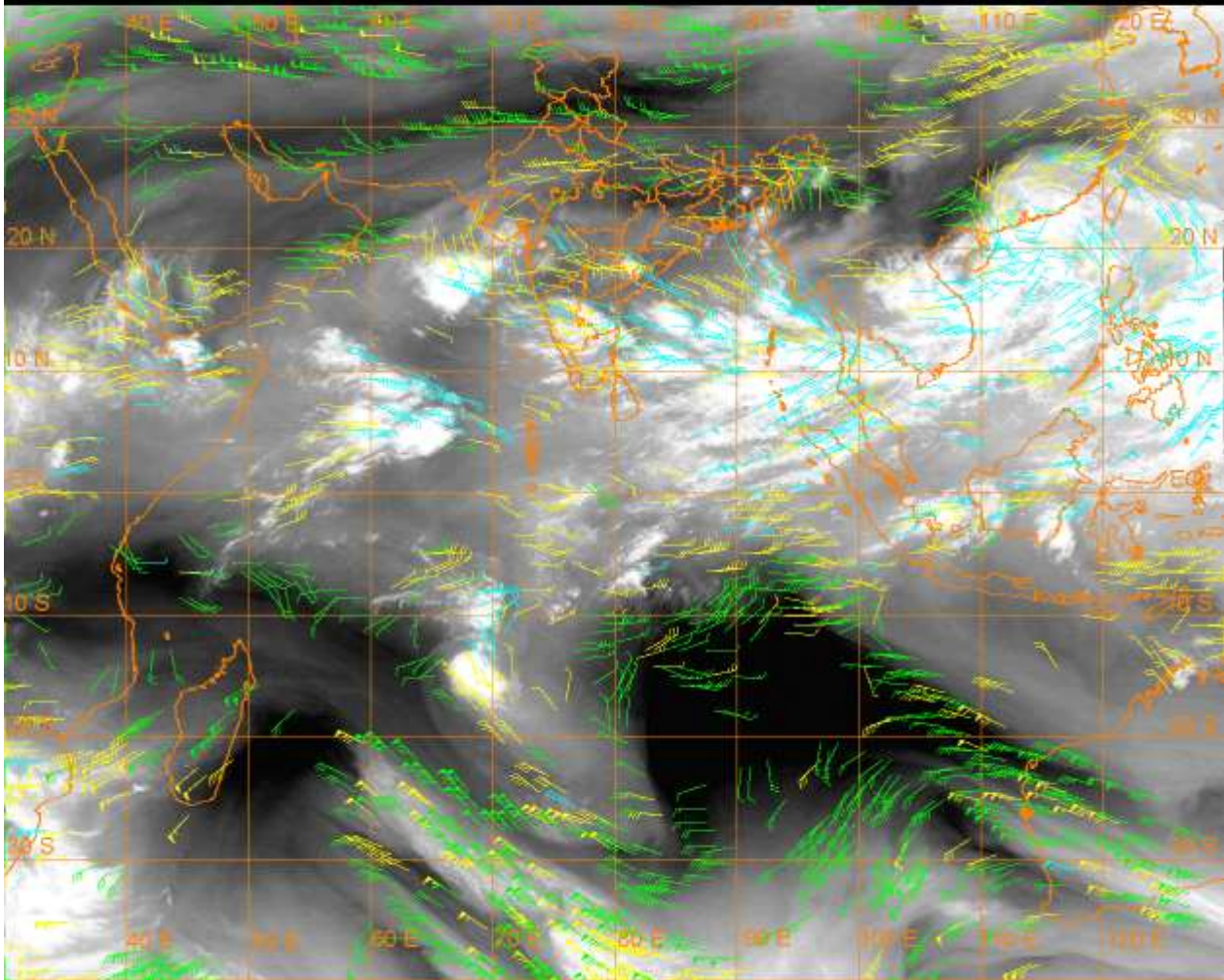
20 Kt

50 Kt

100-250 hPa

251-350 hPa

351-500 hPa



CLOUDS DESCRIPTION WITHIN INDIA:-

NORTH:-

SCT LOW/MED CLOUDS WITH EMBDD ISOL WK CONVTN OVER LADAKH (.) SCT LOW/MED CLOUDS OVER HP UTRKND N UP (.)

EAST:-

SCT LOW/MED CLOUDS WITH EMBDD INT TO V INT CONVTN OVER EXT S CHTGH (MINIMUM CTT **76** DEG C) AND MOD TO INT CONVTN OVER EXT SW ORS (.) SCT LOW/MED CLOUDS WITH EMBDD WK TO MOD CONVTN OVER SHWB SKM ARUPR MIZO (.) SCT LOW/MED CLOUDS OVER BHR JHRKND REST CHTGH REST ORS GWB REST NE STATES (.)

WEST:-

SCT LOW/MED CLOUDS WITH EMBDD MOD TO INT CONVTN OVER NORTH MADHYA MAHA (.) SCT LOW/MED CLOUDS WITH EMBDD WK CONVTN OVER S GUJ N KKN EXT SE VID (.) SCT LOW/MED CLOUDS OVER SE RAJ S MP N GUJ REST MAHA GOA (.)

SOUTH:-

SCT TO BKN LOW/MED CLOUDS WITH EMBDD INT TO V INT CONVTN OVER NICOBAR ILS (MINIMUM CTT **75** DEG C) (.) SCT LOW/MED CLOUDS WITH EMBDD MOD TO INT CONVTN OVER E SIK RYLSM COTL AP N KER N TN ANDAMAN ILS (.) SCT LOW/MED CLOUDS WITH EMBDD WK TO MOD CONVTN OVER REST KRNTK SE TLNGN S KER S TN (.) SCT LOW/MED CLOUDS OVER REST TLNGN LKSDP (.)

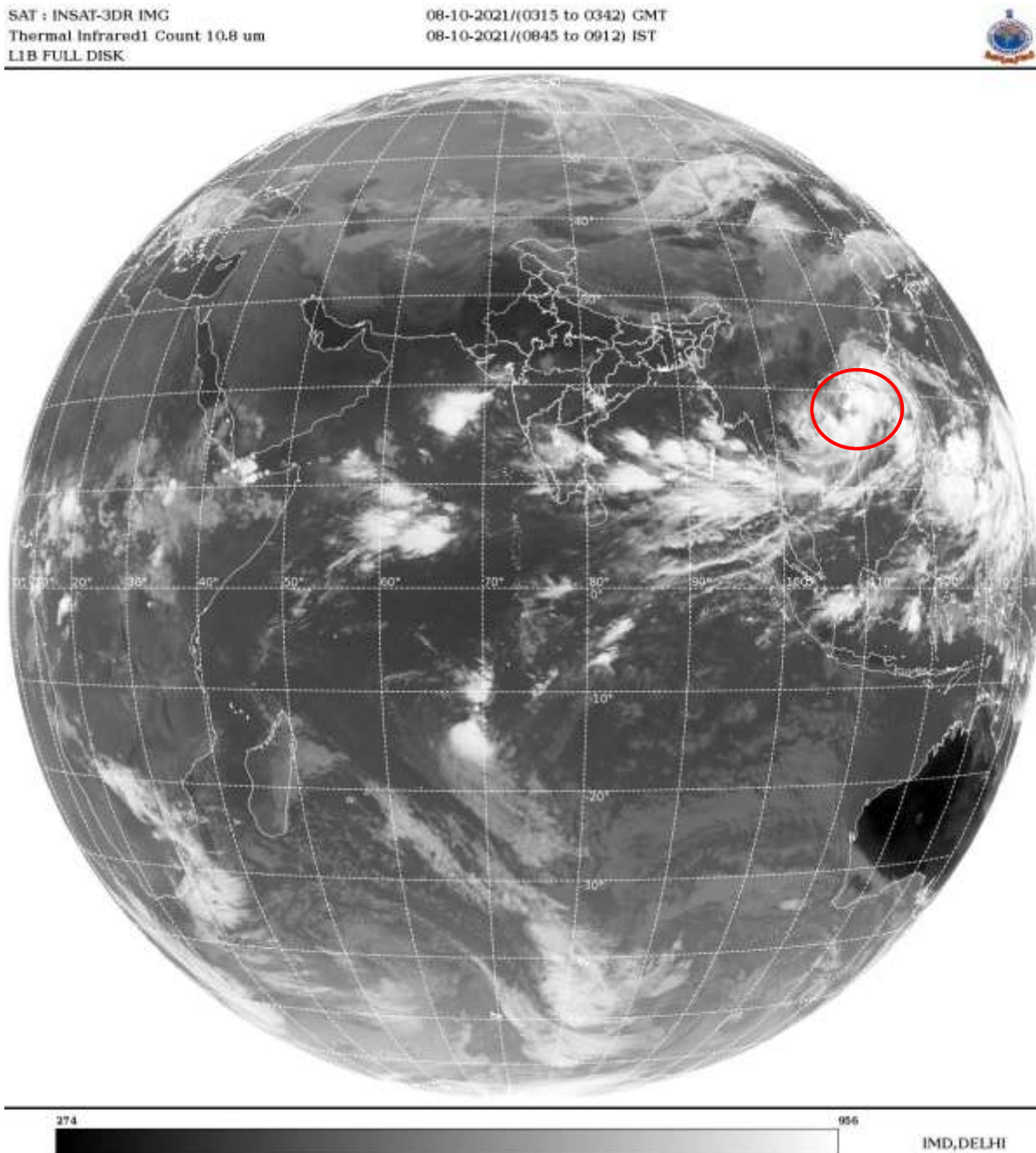
ARABIAN SEA:-

SCT TO BKN LOW/MED CLOUDS WITH EMBDD INT TO V INT CONVTN OVER EC & SW ARSEA (.) SCT LOW/MED CLOUDS WITH EMBDD MOD TO INT CONVTN OVER NE ARSEA OFF S GUJ COAST WC ARSEA AND SE ARSEA OFF KER COAST (.)

BAY OF BENGAL & ANDAMAN SEA:-

SCT TO BKN LOW/MED CLOUDS WITH EMBDD INT TO V INT CONVTN OVER CENTRAL BAY SOUTH BAY & ANDAMAN SEA (.) SCT LOW/MED CLOUDS WITH EMBDD MOD TO INT CONVTN OVER NORTH BAY (.)

CLOUDS DESCRIPTION OUTSIDE INDIA:-



VORTEX (LIONROCK) OVER SOUTH CHINA SEA & N/HOOD:-

VORTEX (**LIONROCK**) OVER SOUTH CHINA SEA & N/HOOD WITH CENTERED NEAR **18.2N / 110.7E** (.) INTENSITY **T2.0/2.0** (.) ASSTD BKN LOW/MED CLOUDS WITH EMBDD INT TO V INT CONVTN OVER AREA BET LAT 15.0N TO 22.0N LONG 108.5E TO 114.5E HAINAN N VIETNAM (.)

SCT LOW/MED CLOUDS WITH EMBDD MOD TO INT CONVTN OVER SRI LANKA CHINA YELLOW SEA E CHINA SEA TAIWAN MYANMAR THAILAND GULF OF THAILAND CAMBODIA LAOS VIETNAM GULF OF TONKIN HAINAN SUMATRA STR OF MALACCA MALAY PENINSULA BORNEO SOUTH CHINA SEA JAVA SEA CELEBES ILS & SEA PHILIPPINES SULU SEA AND OVER INDIAN OCEAN BET LAT 5.0N TO 17.0S TO 3.0N LONG 50.0E TO 70.0E AND BET LAT 5.0N TO 10.0S LONG 70.0E TO 100.0E (.)

TOO 08/0950EF=

NNNN

LEGEND:-

| | | |
|---------------|--------------|--|
| REGION | NORTH | J&K HP PJB HARY DLH UP UTRKND |
| | EAST | BHR JHRKND CHTGH ORS WB SKMNORTH- EAST STATES |
| | WEST | RAJ MP GUJ MAHA GOA |
| | SOUTH | TLNGN AP KRNTK KER TN LKSDP ANDAMAN & NICOBAR ILS |

| | | |
|---|---------------------|---|
| CLOUD DISTRIBUTION | ISOL | ISOLATED (LESS THAN 25%) |
| | SCT | SCATTERED (25 TO 50%) |
| | BKN | BROKEN (51 TO 75%) |
| | SLD | SOLID (GREATER THAN 75%) |
| CLOUDS TOP TEMPERATURE | CTT | CLOUD TOP TEMPERATURE |
| CONVECTION | WK CONVTN | WEAK CONVECTION (CTT GREATER THAN -25°C) |
| | MOD CONVTN | MODERATE CONVECTION (CTT BETWEEN -25°C TO -40°C) |
| | INT CONVTN | INTENSE CONVECTION (CTT BETWEEN -41°C TO -70°C) |
| | V INT CONVTN | VERY INTENSE CONVECTION (CTT LESS THAN -70°C) |
| METEOROLOGICAL SUB-DIVISIONS, STATES & UNION TERRITORIES | ARUPR | ARUNACHAL PRADESH |
| | BHR | BIHAR |
| | CHTGH | CHHATTISGARH |
| | COTL AP | COASTAL ANDHRA PRADESH |
| | COTL KRNTK | COASTAL KARNATAKA |
| | COTL ORS | COASTAL ORISSA |
| | GUJ | GUJARAT |
| | GWB | GANGETIC WEST BENGAL |
| | HARY | HARYANA |
| | DLH | DELHI |
| | HP | HIMACHAL PRADESH |
| | J&K | JAMMU AND KASHMIR |
| | JHRKND | JHARKHAND |
| | KER | KERALA |
| | KKN | KONKAN |
| | LKSDP | LAKSHADWEEP |
| | M MAHA | MADHYA MAHARASHTRA |
| | MAHA | MAHARASHTRA |
| | MANI | MANIPUR |
| | MEGHA | MEGHALAYA |
| | MIZO | MIZORAM |
| | MP | MADHYA PRADESH |
| | | MRTHWD |
| NAGA | | NAGALAND |
| N COTL AP | | NORTH COASTAL ANDHRA PRADESH |

| | | |
|----------------------|------------------------|----------------------------------|
| | NIK | NORTH INTERIOR KARNATAKA |
| | ORS | ORISSA |
| | PJB | PUNJAB |
| | RAJ | RAJASTHAN |
| | RYLSM | RAYALASEEMA |
| | SAU & KUTCH | SAURASHTRA & KUTCH |
| | SHWB | SUB-HIMALAYAN WEST BENGAL |
| | SIK | SOUTH INTERIOR KARNATAKA |
| | SKM | SIKKIM |
| | TLNGN | TELANGANA |
| | TN | TAMIL NADU |
| | TRP | TRIPURA |
| | UP | UTTAR PRADESH |
| | UTRKN | UTTARAKHAND |
| | VID | VIDHARBHA |
| | SHWB | SUB HIMALAYAN WEST BENGAL |
| | GWB | GANGETIC WEST BENGAL |
| | ARSEA | ARABIAN SEA |
| | ILS | ISLANDS |
| MISCELLANEOUS | ASSW | IN ASSOCIATION WITH |
| | ASSTD | ASSOCIATED |
| | LLC | LOW LEVEL CIRCULATION |
| | EMBDD | EMBEDDED |
| | N/HOOD | NEIGHBOURHOOD |
| | EXT | EXTREME |